



A SAFE SCHOOLS TRANSPORTATION STUDY

Umatilla Middle School

Umatilla, FL

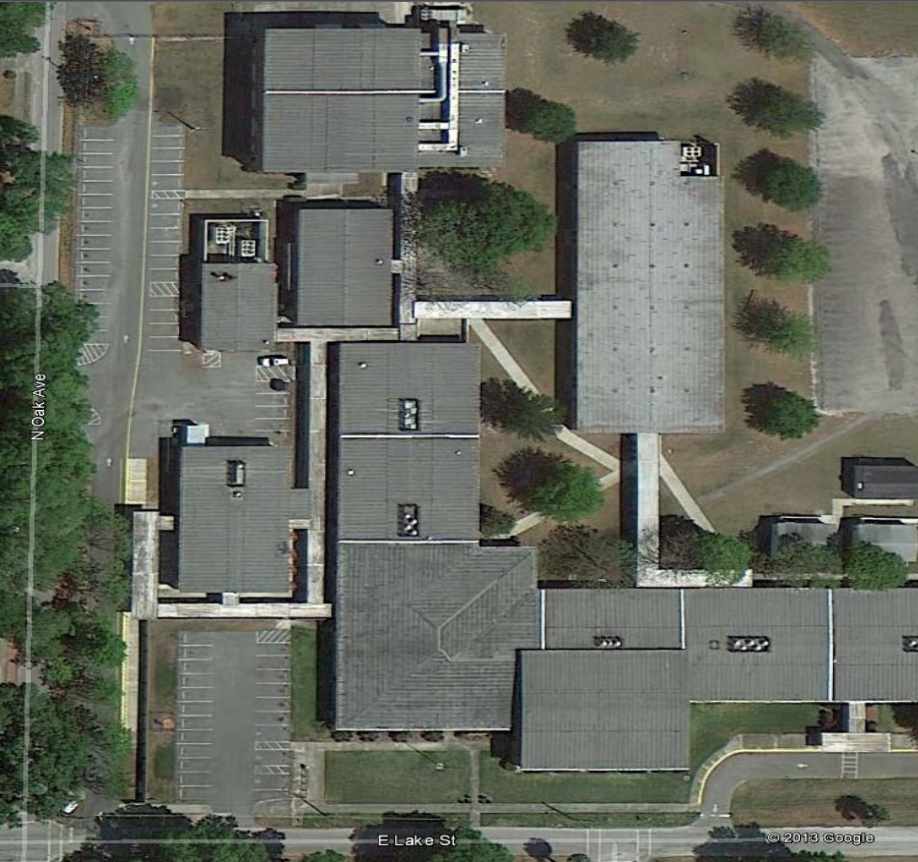
UMATILLA MIDDLE SCHOOL

TranSystems



Lake-Sumter
mpo
Metropolitan
Planning Organization

July 2013



November 16, 2012

6th-8th Grade

Total Students: 606

- Provided Bus Transportation: 357
- Not Provided Bus Transportation: 249

Students Living in the “Walk Zone”: 154

- Provided Bus Transportation: 43
- Not Provided Bus Transportation: 111

Observation Day (Partly Cloudy/Rain)

- Walker’s (estimated): 95
- Bike Riders: 5

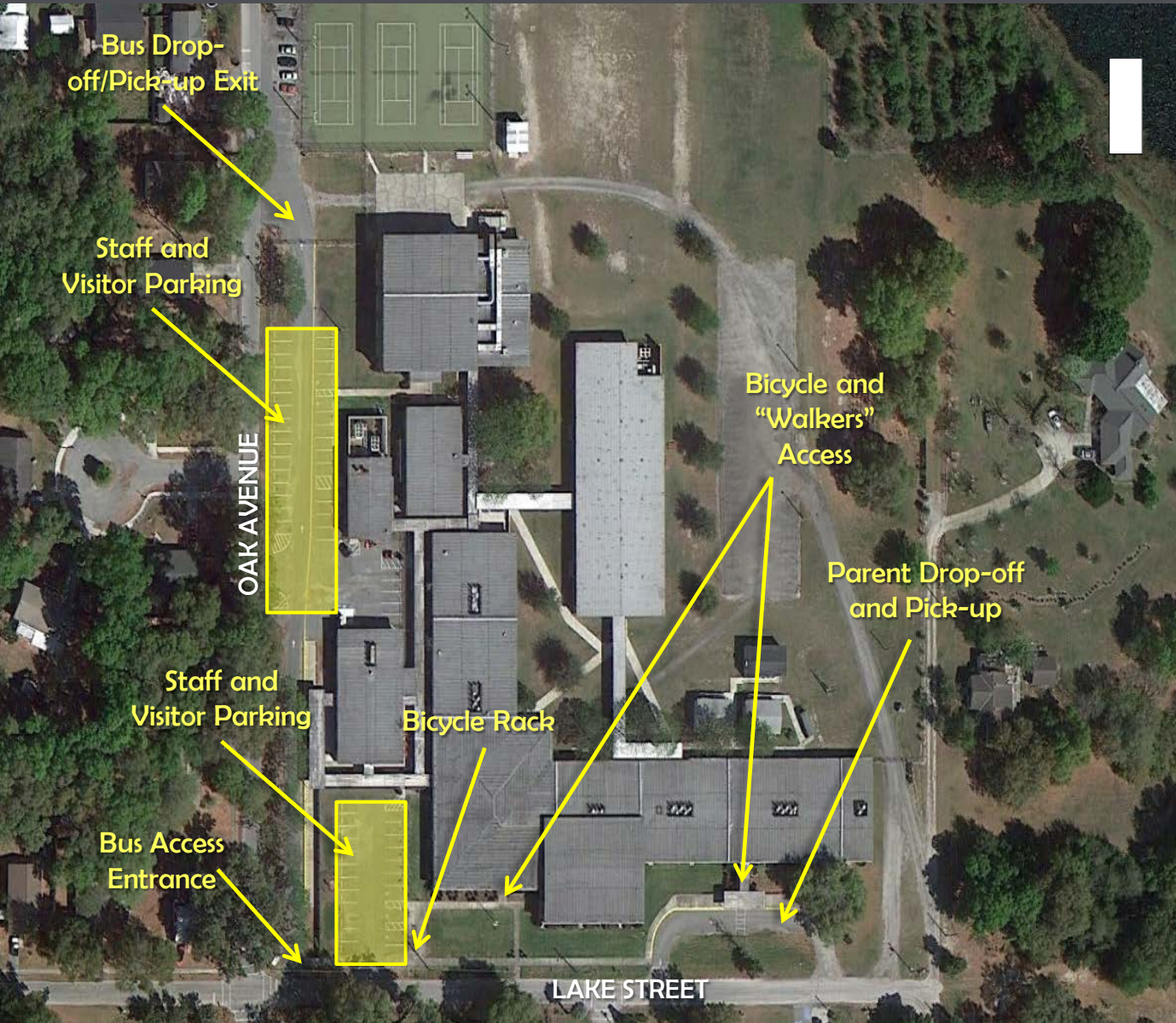


✓ School website – click [here](#)

✓ City of Umatilla website – click [here](#)

✓ Lake County School District website – click [here](#)

Umatilla Middle School

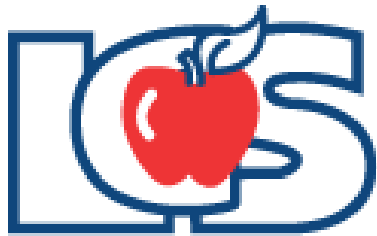


Findings:

- ✓ Bus access is off Lake Street at corner of Oak Avenue.
- ✓ Parent Drop-off and Pick-up location is separated from bus loop.
- ✓ No School zone flashers exist on either Oak Avenue or Lake Street.
- ✓ Staff and visitor parking lot is accessed off Lake Street.

Findings:

- ✓ On June 24, 2013 the Lake County School Board voted to formally discontinue all courtesy busing for elementary and middle school students who live within the 2-mile walk zone of the school.
 - ✓ By state law, Florida provides transportation funding only for traditional education students that live two or more miles from the school. The Lake County School Board unanimously made the decision to discontinue the service as it seeks cost-cutting measures to close a \$16 million gap in for the 2013 – 2014 proposed budget.
 - ✓ This essentially makes the new parent responsibility zone equal to the 2-mile walk zone, except for schools with identified Hazardous Walking Areas.



- 8:15 am :** Students may arrive on campus and breakfast served
- 9:05 am:** School start time
- 3:54 pm:** School release time; walkers released first; Principal Sanders calls bus numbers one at a time to avoid hallway congestion

Early Dismissal Every Wednesday:

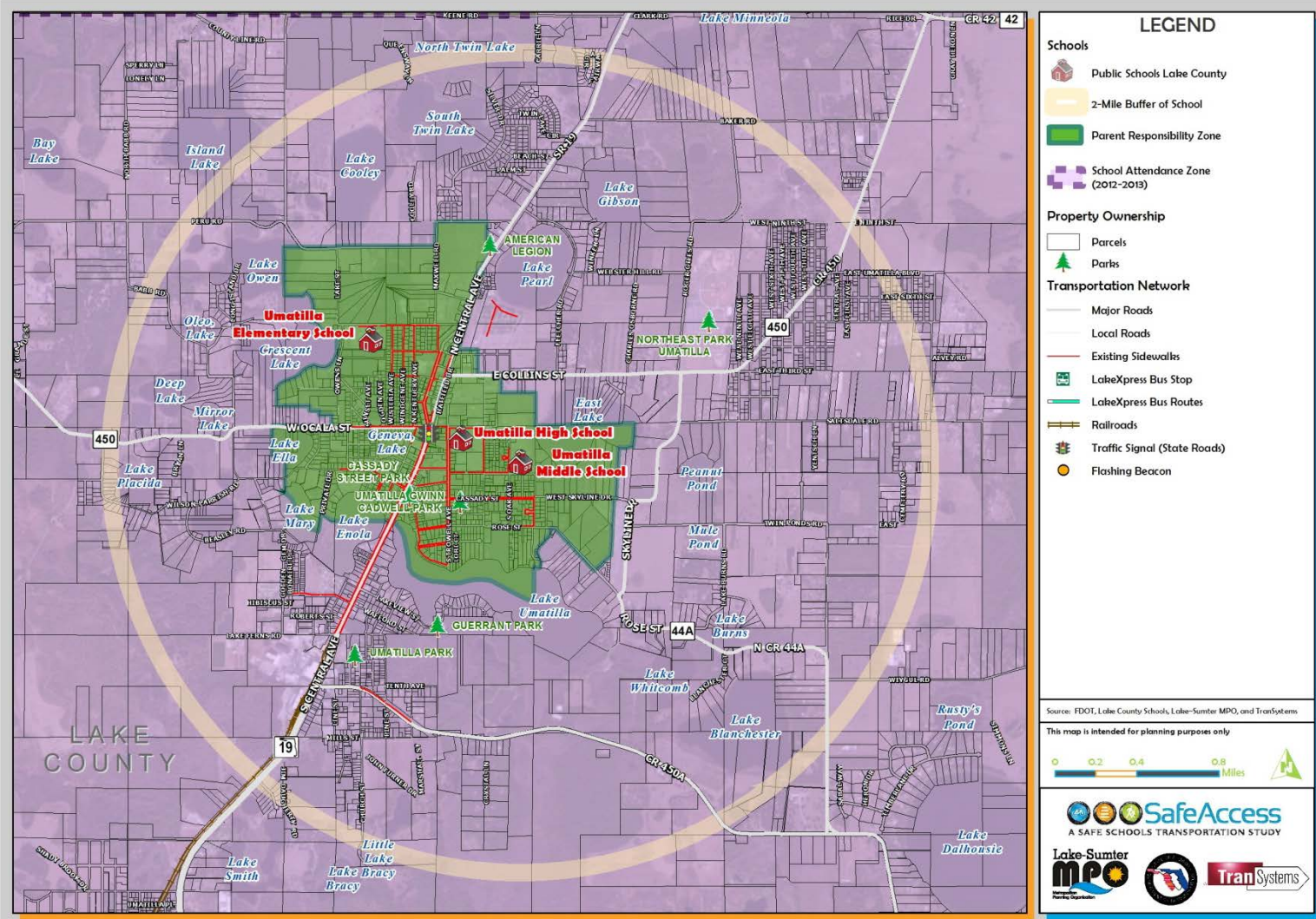


Attendance Zone and 2-Mile "Walk" Zone Map

Umatilla Middle School



Umatilla Middle School: Attendance and 2-Mile "Walk" Zone Map



Findings:

- ✓ Signage for bus loop entrance are marked.
- ✓ Operations in the bus loop and loading/unloading works well.
- ✓ Currently there are no lights in the bus loop.
- ✓ Bus loop queue of 14 total are single queued in PM.
- ✓ Bus loop entrance crosses student/ walkers path



Umatilla Middle School

Findings:

- ✓ School zone sign was recently replaced on the west side of Oak Street near the north end of the bus loop exit area.
- ✓ School zone paint on N. Pine Avenue and Oak Avenue is faded and needs repainting for better visibility and vehicular awareness.

Recommendation:

- ✓ Sight distance is limited on N. Pine Ave (southbound) near the school. It is recommended to install school zone flashing beacon sign (see Recommended Project #4).



Faded school zone sign (Oak Avenue) – facing south



School Zone marking paint is faded – needs repainting on N. Pine Ave.



New school zone sign – recently replaced (Oak Avenue/Kristin Ct)

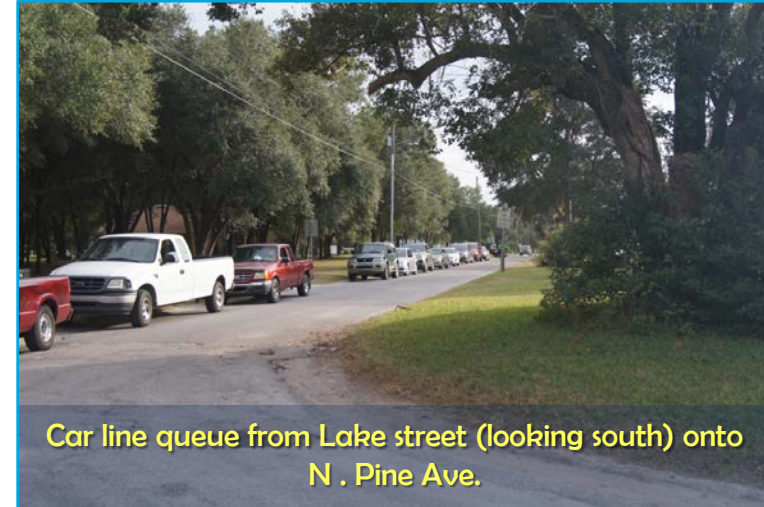
Findings:

- ✓ Parent drop-off/pick-up line accessed on Lake Street
- ✓ Many students were observed being dropped off early in AM before school starts and are collected by the immediately accessed door from the pick-up/drop-off landing by Umatilla Middle School staff.
- ✓ Signage for parent pick-up and drop-off is adequate



Findings (Continued):

- ✓ Cars queue along N. Pine Avenue in PM, and several cars were observed parking in non-designated places on the east end of the campus to avoid the car line.
- ✓ Some parents were observed dropping off students at front of school on Lake Street and at the corner of Lake Street/Oak Street.
- ✓ Some cars observed not following single queue line rule for parent drop-off/pick-up entrance.



Findings (Continued):

- ✓ For PM dismissal, UMS staff temporarily blocks-off Lake Street westbound traffic from Winthrop Avenue to Oak Avenue
 - ✓ Parents exiting parent drop-off/pick-up area are forced to go south on Winthrop Avenue off Lake Street
 - ✓ UMS staff desires a more permanent solution than the current traffic solution
 - ✓ Police direct traffic in parent pick-up/drop-off area

Recommendation:

- ✓ Install either a permanent swinging gate (UMS preferred) that blocks off Lake Street eastbound traffic for PM dismissal or consider feasibility of making Lake Street permanently one-way going westbound from N. Pine Ave to Oak Avenue



Findings:

- ✓ There is currently two funded crossing guards for Umatilla Middle School and Umatilla High School that cross students safely across SR 19 at Ocala St/Bulldog Lane (five point) signalized intersection with signalized crosswalk .
- ✓ Observed approximately 20 students (Middle and High School aged) being crossed by crossing guards.



Findings:

- ✓ Walkers and Bicyclists are allowed to access the school at a dedicated door on the east side of the main campus building
- ✓ Walkers and Bicyclists are released first at 3:54 PM from the school's main entrance. Several bicyclists observed wearing helmets.
- ✓ Bicycle rack is located at the front of the school next to the staff and visitor parking lot.
- ✓ Walkers and Bicyclists were observed yielding and watching for cars. Some observed using cell phones.
- ✓ Most students used sidewalks, where available. Most crosswalks around the school are not American with Disabilities Act (ADA) compliant.



Findings:

- ✓ A tripping metal hazard exists near the crosswalk on Lake Street by the bus loop entrance. The crosswalk to cross Oak Avenue leads to grassy area, metal utility cover.
- ✓ Students do not have a direct walking access to the School's main entrance without crossing in front of the staff and visitor parking lot and/or bus loop entrance. However, Umatilla Middle School staff was observed directing pedestrian traffic during arrival and dismissal.
- ✓ Lack of sidewalks observed for walker's access to school



Recommendations:

- ✓ Move crosswalk to school south to current sidewalk, and add crosswalk striping crossing bus loop drive entrance (see Recommended Project #1).
- ✓ Connect sidewalk to eliminate 25' sidewalk gap on Oak Avenue (west side)
- ✓ Consider feasibility of using grass area on west side of staff and visitor parking lot to construct 5' sidewalk to eliminate students being forced to walk across staff and visitor parking lot entrance/exit (See Recommended Project #9).

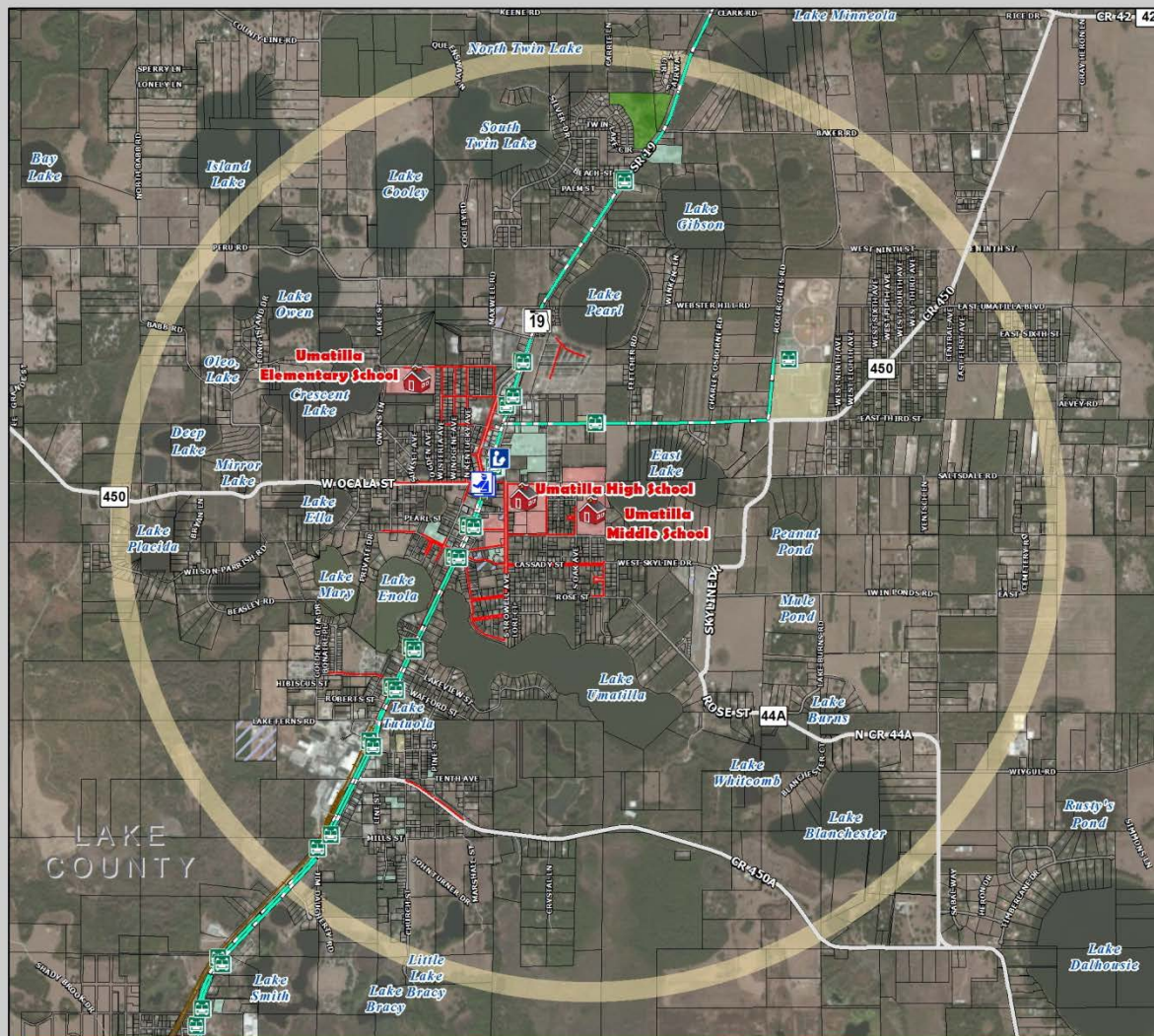


Potential sidewalk location would offer students a safe front access



Umatilla Middle School

Umatilla Middle School: Existing Conditions Map



LEGEND

Schools

- Public Schools Lake County
- Crossing Guard Locations
- Libraries
- 2-Mile Buffer of School

Property Ownership

- Parcels
- School Property
- Lake County Owned Property
- City Owned Property
- Church Owned Property
- Golf Owned Property
- Parks

Transportation Network

- Major Roads
- Local Roads
- Existing Sidewalks
- LakeXpress Bus Stop
- LakeXpress Bus Routes
- Railroads
- Traffic Signal (State Roads)
- Flashing Beacon

Source: FDOT, Lake County Schools, Lake-Sumner MPO, and TransSystems
This map is intended for planning purposes only



Findings:

- ✓ The City of Umatilla is currently coordinating with the Florida DOT District 5 to install new signalized intersections and signalized crosswalks and crosswalk crossings at the following locations as previously identified in the FDOT SR 19 Corridor Study:
 - ✓ SR 19 @ Guarrant Street/Cassady Street
 - ✓ SR 19 @ CR 450E/E. Collins Street



See Recommended Projects Section of report – Blue line reflects consultant recommended sidewalk improvement



FINAL SR 19 Corridor Study

January 2011

Prepared by:

HNTB
HNTB Corporation
300 Primera Boulevard
Suite 200
Lake Mary, FL 32746
(407) 805-0355

Prepared for:



Findings:

- ✓ The City of Umatilla is constructing a multi-use trail that will connect from CR 450/E. Collins Street to Bulldog Lane. Construction for the trail has already begun and once completed, will serve both citizens and students of Umatilla Elementary, Umatilla Middle, and Umatilla High School's alike. The 2009 SR 19 Corridor Study identified the needed improvements.



Recommended Project List

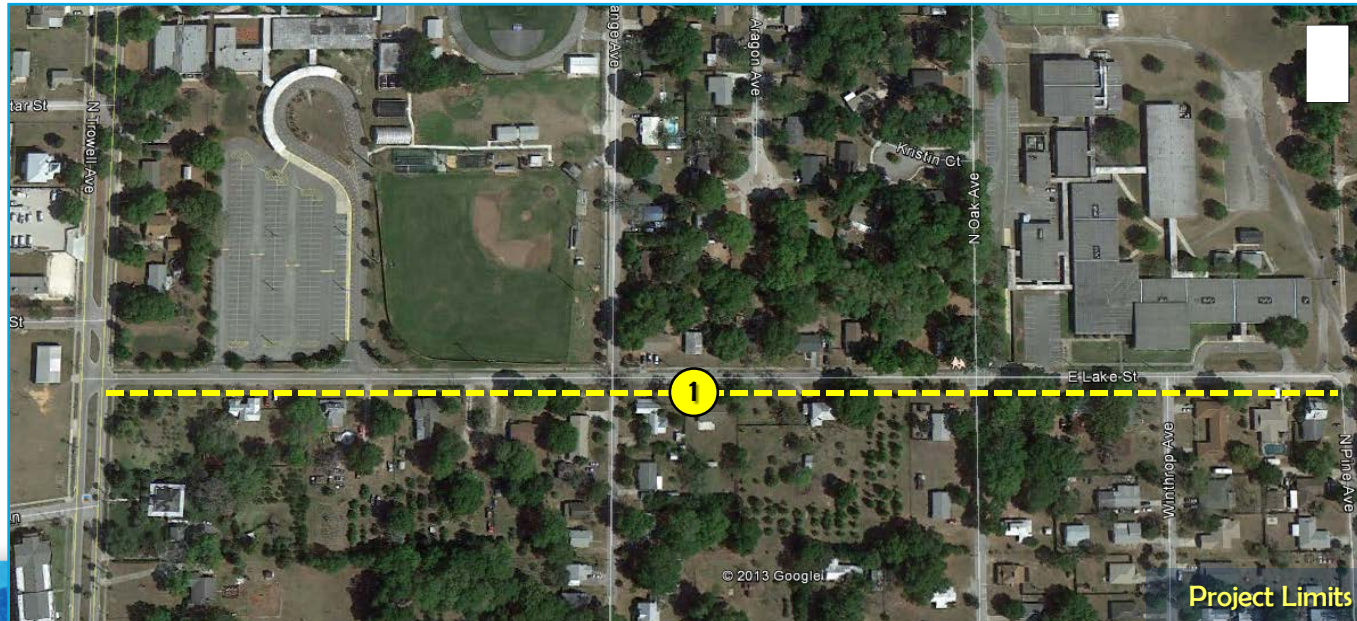
Project Description	SAS Priority Project #	On/Off Campus
Lake Street 5' sidewalk (south side) from Trowell Avenue to N Pine Avenue	1	Off Campus
N. Pine Ave 5' sidewalk (west side) from existing sidewalk (north of Cassady Street) to Lake Street	2	Off Campus
Orange Avenue 5' sidewalk (west side) from Bulldog Lane to E. Collins St	3	Off Campus
E Collins Street 5' sidewalk (north side) from Orange Avenue to W. Ninth Ave (connect to North Lake Community Park)	4	Off Campus
Ocala Street 5' sidewalk (south side) from Kentucky Ave to existing sidewalk at SR 19 crossing with ADA improvements	5	Off Campus
Bulldog Lane 5 ' sidewalk (south side) from existing sidewalk to Trowell Avenue with ADA compliant crosswalks.	6	Off Campus



Recommended Project #1 Lake Street Sidewalk (South Side)

Recommendation:

- ✓ Construct 5' sidewalk from Trowell Avenue to N. Pine Ave on South side of Lake Street. Sidewalk should be connected to Recommended Project #2 and include an ADA compliant crosswalk, curb ramps, and crosswalk signage at existing Winthrop Avenue crossing location.
- ✓ Project would serve both Umatilla Middle School and Umatilla High School students.



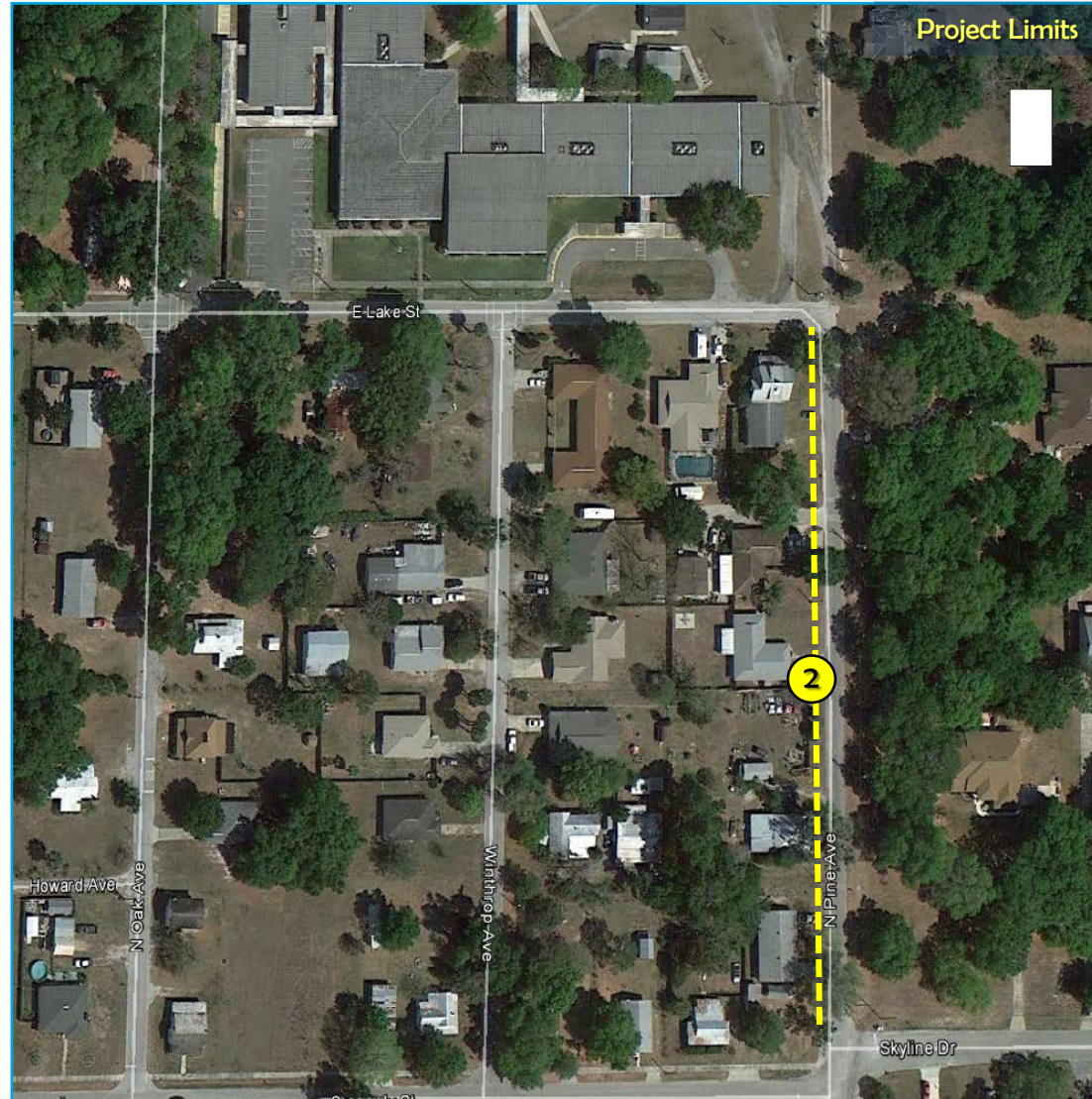
Recommended Project #2 N. Pine Ave. Sidewalk (West Side)

Recommendation:

- ✓ Construct 5' sidewalk on N. Pine Avenue from existing sidewalk north of Cassady Street to Lake Street. Project should connect to Recommended Project #2 (Lake Street Sidewalk) to allow for students coming neighborhoods south and east of the school to walk or bike safely to school and cross at Winthrop Ave crosswalk.



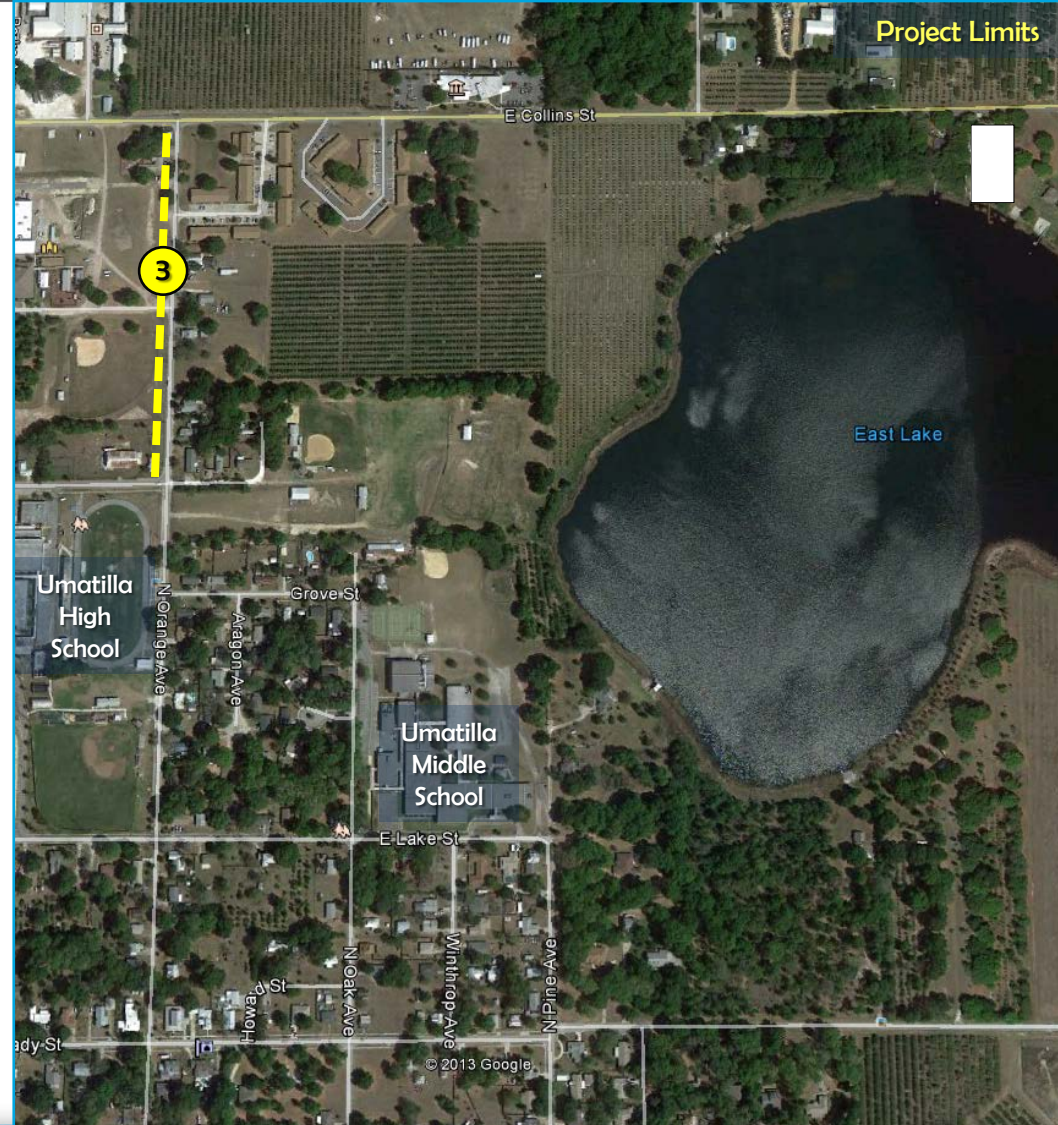
Student observed walking in middle of street on N Pine Ave – no sidewalks currently present



Recommended Project #3 Orange Ave. Sidewalk (West Side)

Recommendation:

- ✓ Construct 5' sidewalk on the west side of Orange Avenue. Constructing the sidewalk will allow for full sidewalk connectivity along Orange Avenue for Umatilla Middle School walkers and bicyclists. This project should be constructed in conjunction with Recommended Project #6 (E. Collins Street Sidewalk).
- ✓ Project would serve both Umatilla Middle School and Umatilla High School students.



Recommended Project #4 E. Collins St. Sidewalk (North Side)

Recommendation:

- ✓ Construct 5' sidewalk on the north side of E. Collins Street with crosswalk and crosswalk signage connecting to Orange Avenue. This project should be constructed in conjunction with Recommended Project #5 (Orange Avenue Sidewalk).
- ✓ Project would serve both Umatilla Middle School and Umatilla High School students.



Recommended Project #5 Ocala St. Sidewalk (South Side)

Recommendation:

- ✓ Construct 5' sidewalk on the south side of Ocala Street from Kentucky Ave to existing SR 19 crosswalk – including ADA compliant curb ramps.
- ✓ Project would serve Umatilla Middle School, Umatilla High School, and Umatilla Elementary School students.



Recommended Project #5 Ocala St. Sidewalk (South Side)

- ✓ Add sidewalk from Kentucky Ave to existing signalized crosswalk.

BEFORE:



Recommended Project #5 Ocala St. Sidewalk (South Side)

- ✓ Add sidewalk from Kentucky Ave to existing signalized crosswalk.

AFTER:



Recommended Project #6 Bulldog Ln. Sidewalk (South Side)

Recommendation:

- ✓ Construct 5' sidewalk on the south side of Bulldog Lane from existing sidewalk to Trowell Avenue including crosswalk signage and markings with ADA curb ramps.
- ✓ Project would serve Umatilla Middle School, Umatilla High School, and Umatilla Elementary School students.



Recommended Project #6 Bulldog Ln. Sidewalk (South Side)

- ✓ Add sidewalk from existing to Trowell Ave with added crosswalks

BEFORE:



Recommended Project #6 Bulldog Ln. Sidewalk (South Side)

- ✓ Add sidewalk from existing to Trowell Ave with added crosswalks

AFTER:



Other Recommended Project Relocate Oak Street Crosswalk

Recommendation:

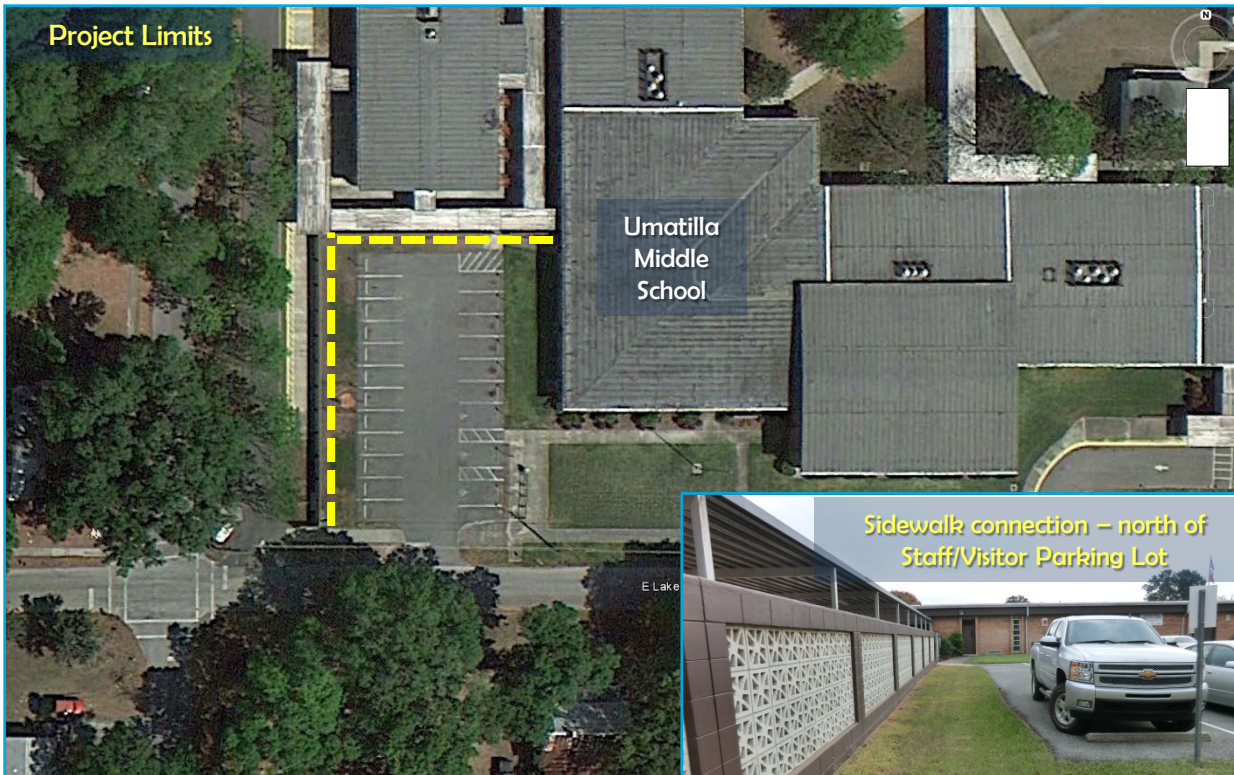
- ✓ Move crosswalk to school south to current sidewalk, and add crosswalk striping crossing bus loop drive entrance.



Other Recommended Project On-Campus Sidewalk

Recommendation:

- ✓ Construct 5' sidewalk on-campus to the west of the staff and visitor parking lot to serve walkers and bicyclists an access to school without having to cross in front of the entrance/exit for the lot.

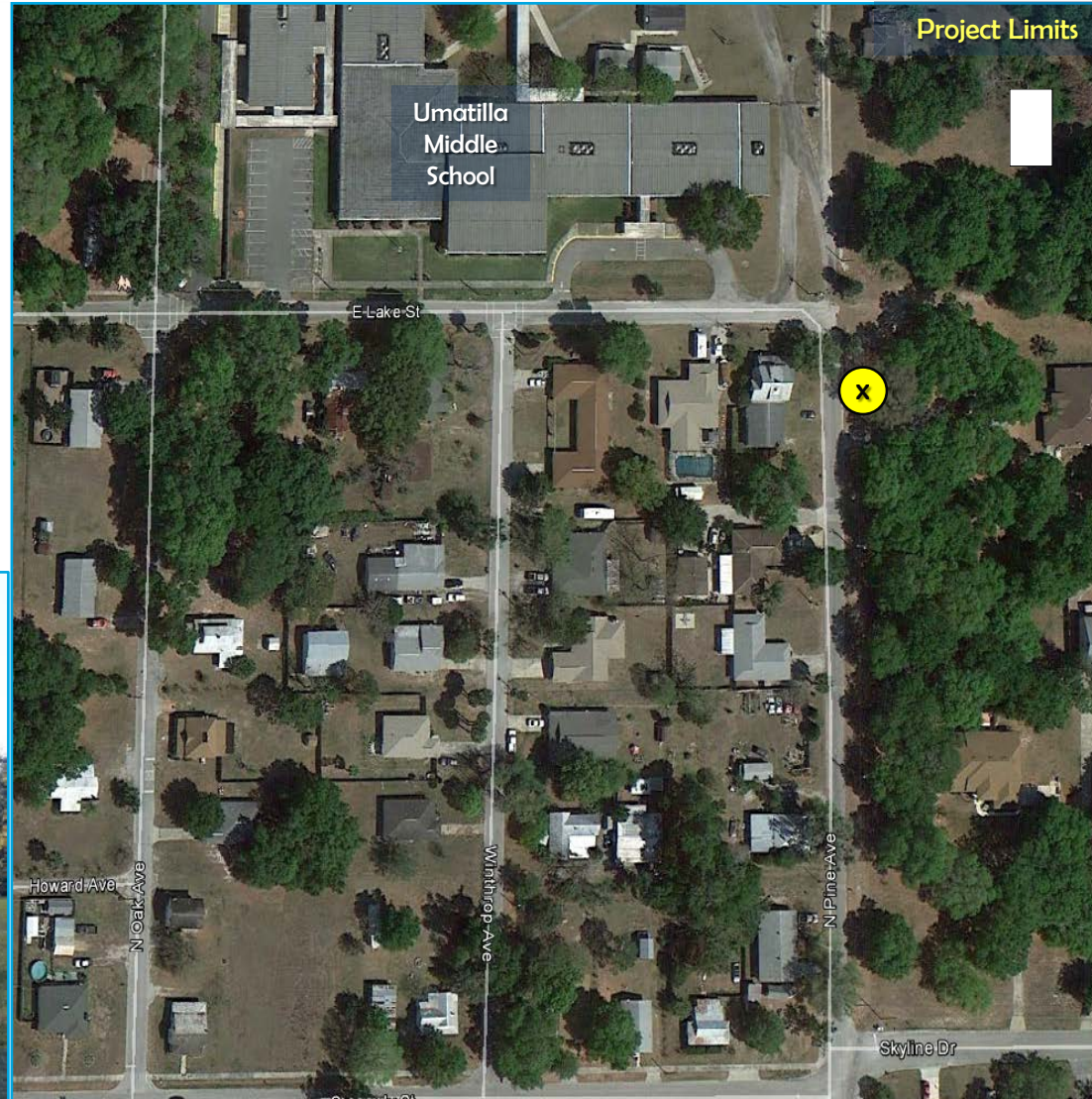


Other Recommended Project

N. Pine Ave. School Zone Flashing Beacon

Recommendation:

- ✓ Install school zone flashing beacon on the southbound section of N. Pine Avenue (east side) to offer vehicles appropriate sight distance and awareness of school zone coming into Lake Street. Also repaint school zone paint marking for better visibility.



School Zone marking paint is faded – needs repainting on N. Pine Ave.

This website represents an ongoing commitment to increase safe access to schools within the Lake~Sumter Metropolitan Planning Organization Planning Area.

Updates to data, and suggestions for programming and project ideas are welcome from all agencies and the general public.

Mike Woods

Project Manager, Transportation Planner

(352) 315-0170

mwoods@lakesumtermpo.com



Doug Lynch, GISP

Consultant Project Manager

(407) 875-8938

dwlynch@transystems.com



*Promoting Regional
Transportation Partnerships*