



A SAFE SCHOOLS TRANSPORTATION STUDY

# Tavares Middle School

## Tavares, FL

5 LANE PARK  
CUTOFF

# TAVARES MIDDLE SCHOOL

August 2013



# Tavares Middle School Snapshot

December 18, 2012

Grades: 6<sup>th</sup> – 8<sup>th</sup>

<b>Total Students:</b>	<b>1,023</b>
■ Provided Bus Transportation:	821
■ Not Provided Bus Transportation:	202
■ Buses Assigned to School (17 reg, 6 ESE)	23
<b>Students Living within the FTE "Walk Zone":</b>	<b>84</b>
■ Provided Bus Transportation:	59
■ Not Provided Bus Transportation:	25
<b>Students Living within the LCS PRZ *</b>	<b>21</b>
■ Provided Bus Transportation:	3
■ Not Provided Bus Transportation:	18
<b>Observation Day (Sunny)</b>	
■ Walkers:	10-15 (est)
■ Bike Riders:	2



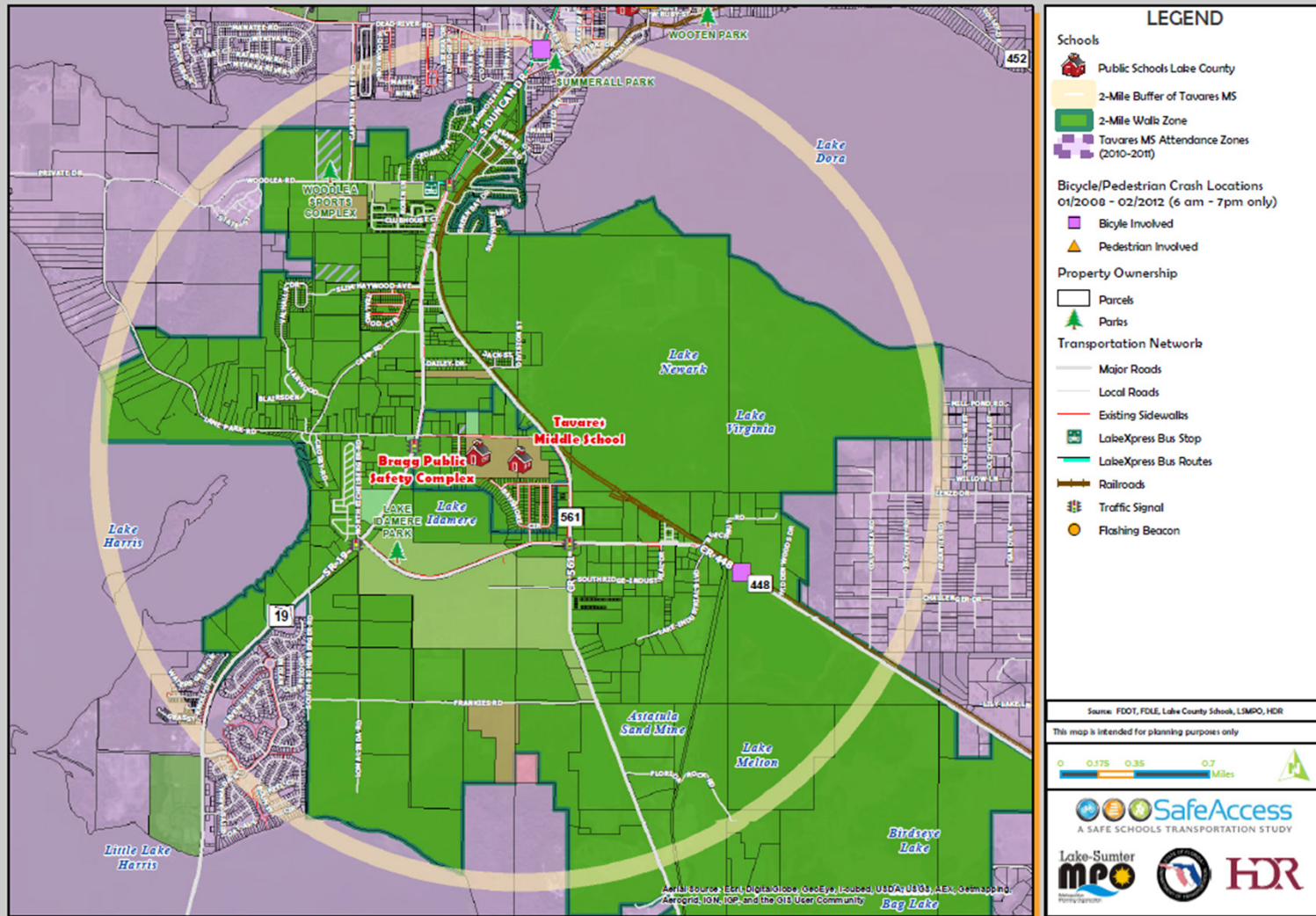
- ✓ Tavares Middle School website – Click [here](#)
- ✓ City of Tavares website – Click [here](#)
- ✓ Lake County Schools website – Click [here](#)

\*LCS PRZ is the Lake County Schools Designated Parent Responsibility Zone



# Attendance and 2-Mile "Walk" Zone Map

## Tavares Middle School: Attendance and 2-Mile "Walk" Zone Map



### LEGEND

**Schools**

- Public Schools Lake County
- 2-Mile Buffer of Tavares MS
- 2-Mile Walk Zone
- Tavares MS Attendance Zones (2010-2011)

**Bicycle/Pedestrian Crash Locations 01/2000 - 02/2012 (6 am - 7pm only)**

- Bicycle Involved
- Pedestrian Involved

**Property Ownership**

- Parcels
- Parks

**Transportation Network**

- Major Roads
- Local Roads
- Existing Sidewalls
- LakeXpress Bus Stop
- LakeXpress Bus Routes
- Railroads
- Traffic Signal
- Flashing Beacon

Source: FDOT, FDLE, Lake County Schools, LSMPO, HDR

This map is intended for planning purposes only.

0 0.175 0.35 0.7 Miles

SafeAccess  
A SAFE SCHOOLS TRANSPORTATION STUDY

Lake-Sumter  
MPO

HDR

Aerial Source: Earth Digital Globe, GeoEye, iSatellite, USDA/USGS/AES, GeoMapbox, Aerogrid, IGN, IOP, and the GIS User Community

# Arrival and Dismissal Schedule

- 8:45 am:** Students arrive
- 8:50 am:** Teacher supervision begins
- 9:00 am:** Buses unload
- 9:15 am:** School Starts
- 3:40 pm:** Bus gate opened; Buses start to stage
- 4:00 pm:** Students released
- 4:25 pm:** Most students are off campus



*Note: Students are released one hour early on Wednesdays*



*On-Site Storage*



*Queue Prior To Gate Opening*



*End of Bus Loading Area*

## Findings:

- ✓ 17 regular service buses and 6 ESE buses (23 total)
- ✓ Bus riders are staged in a courtyard by the bus ramp and released as buses arrive
- ✓ Buses do not arrive at the same time; Sufficient storage observed on site for staggered bus arrival
- ✓ Bus gate not opened until 3:40 PM – 8 buses queued prior to gate opening; Buses turn around in Big House parking lot to come into bus loop from east prior to gate opening
- ✓ Students load around bus loop to the end of the sidewalk
- ✓ Bus operations were observed to be well-run and efficient

## Recommendations:

- ✓ Open bus gate earlier or coordinate with Big House to allow bus storage in parking lot until gates open

## Findings:

- ✓ School has issue with students not wanting to wait on car ramp; Parents allow younger siblings to play outside car while waiting for school dismissal
- ✓ Car queue observed to back up onto Lane Park Cutoff; Vehicles do not block bus access
- ✓ Officers at the Bragg Public Safety Complex have complained about pick-up queue blocking driveway



## Recommendations:

- ✓ Install benches and walkway cover over pick-up / drop-off area to shelter waiting students from elements
  - ✓ Benches / low wall along backside of pick-up walkway might deter parents from allowing younger siblings to run around property
- ✓ Repaint parking lot to visually identify traffic flow internal to site
- ✓ Install stop sign at parking lot exit
- ✓ Replace chevron pavement paint at parking lot exit with concrete divider island (“porkchop”)
  - ✓ Would serve as traffic calming device and pedestrian refuge along front side of campus







A SAFE SCHOOLS TRANSPORTATION STUDY

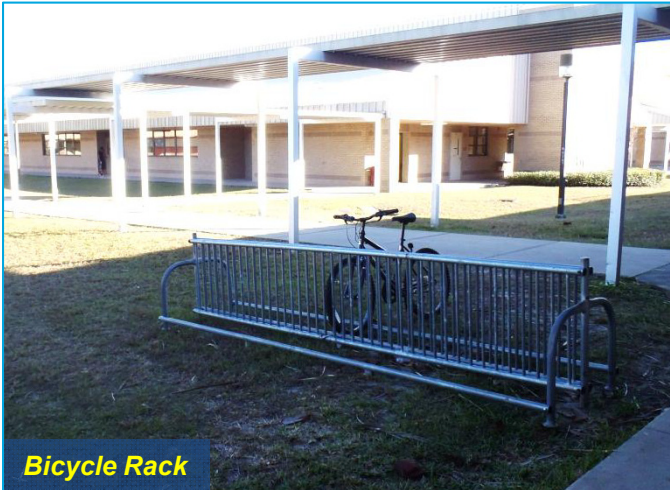
Tavares Middle School

# Remote Drop-off & Pick-up

## Findings:

- ✓ School has received complaints about parents picking up on Lake Idamere Blvd behind the school by the back walker gate; Only one vehicle observed to wait there for a student in the afternoon





## Findings:

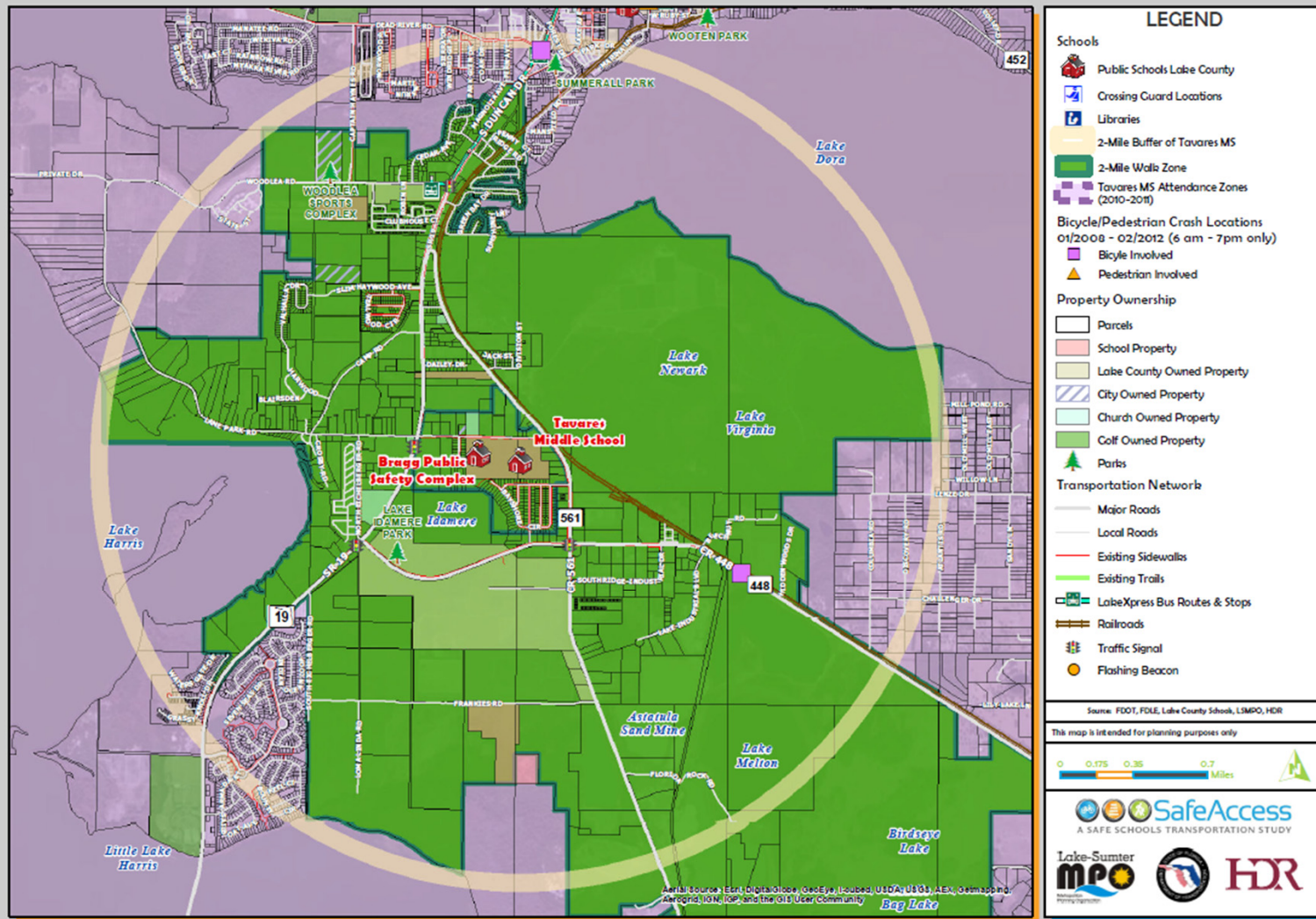
- ✓ Most walkers and bike riders arrived on campus via the back gate
- ✓ Bicycle rack located by main office in grass
- ✓ 2 bikes found just outside back pedestrian gate
- ✓ No sidewalk connections into school from Lane Park Cutoff Rd
- ✓ Some students attend karate school on north side of Lane Park Cutoff Rd
- ✓ School anticipates aftercare program at The Big House once open

## Recommendations:

- ✓ Relocate bicycle rack near back pedestrian gate
- ✓ Replace existing bicycle rack with inverted “U” or ribbon style bicycle rack; Construct a concrete pad for bicycle rack
- ✓ Construct new sidewalk connections along both sides of car loop
- ✓ Construct new sidewalk on north side of Lane Park Cutoff Rd with crossing to karate school



## Tavares Middle School: Existing Conditions Map



### LEGEND

**Schools**

- Public Schools Lake County
- Crossing Guard Locations
- Libraries
- 2-Mile Buffer of Tavares MS
- 2-Mile Walk Zone
- Tavares MS Attendance Zones (2010-2011)

**Bicycle/Pedestrian Crash Locations 01/2008 - 02/2012 (6 am - 7pm only)**

- Bicycle Involved
- Pedestrian Involved


**Property Ownership**

- Parcels
- School Property
- Lake County Owned Property
- City Owned Property
- Church Owned Property
- Golf Owned Property
- Parks

**Transportation Network**

- Major Roads
- Local Roads
- Existing Sidewalks
- Existing Trails
- LakeXpress Bus Routes & Stops
- Railroads
- Traffic Signal
- Flashing Beacon

Source: FDOT, FDLE, Lake County Schools, LIMPO, HDR  
This map is intended for planning purposes only



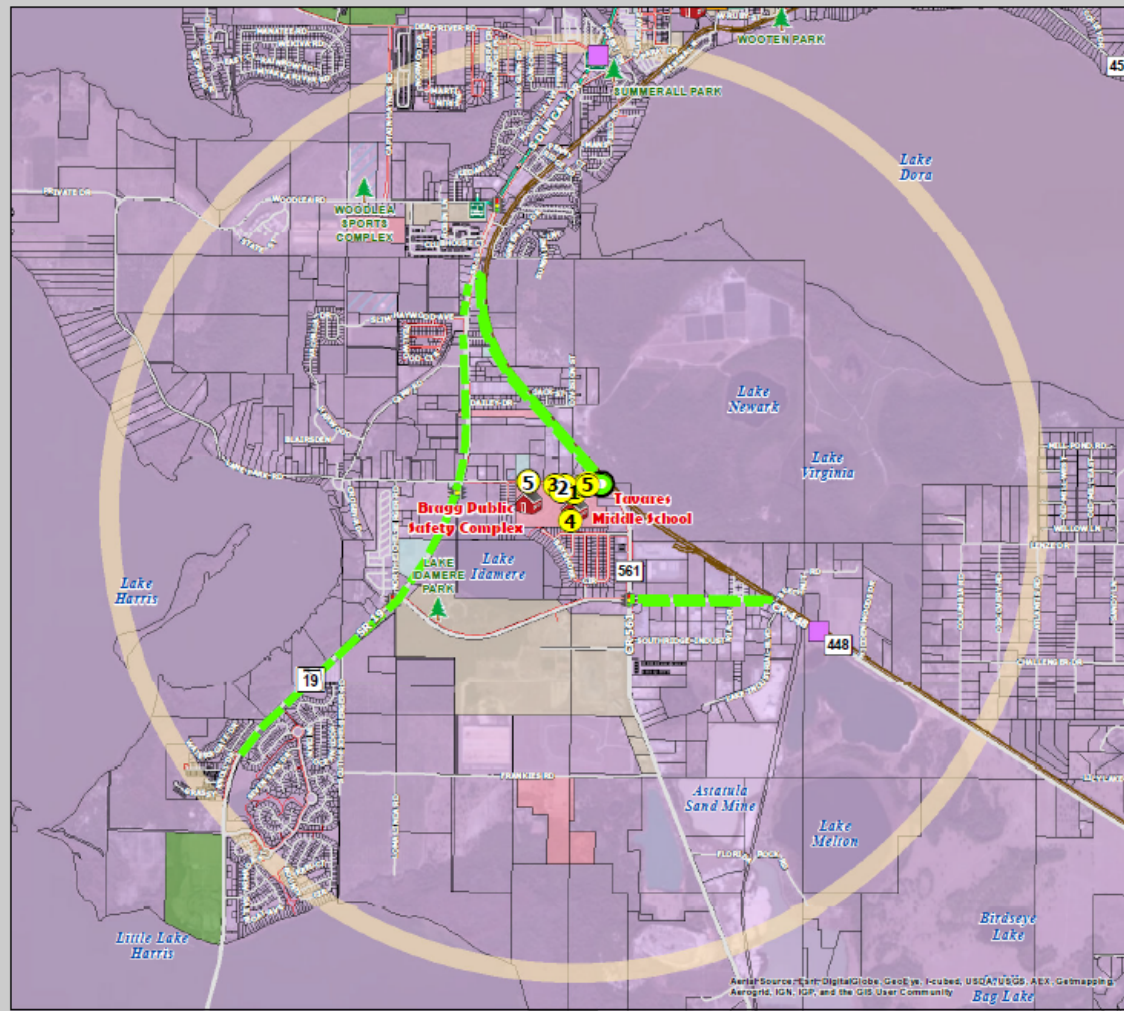
Aerial Source: Esri, DigitalGlobe, GeoEye, Earthstar (United States), Aero, GeoEye, IGN, AerGRID, NOAA, IGN, and the GIS User Community

## Findings:

- ✓ On June 24, 2013 the Lake County School Board voted to formally discontinue all courtesy busing for elementary and middle school students who live within 2-mile walk zone of the school
  - This essentially makes the new parent responsibility zone equal to the 2-mile walk zone, except for schools with identified Hazardous Walking Areas
- ✓ 59 Students were courtesy bused last year within the 2-mile walk zone for Tavares Middle School
- ✓ Given the largely rural nature of the school location, it is likely most of these children will be brought to school by car, additional car queue issues and wait times should be anticipated
- ✓ The Board is also considering combining middle and high school students on the same bus for the 2014-2015 school year.
  - This would involve moving middle school start times earlier from their existing 9:05 to 9:15 time frame to the proposed 7:35
  - This would also cause the elementary schools to be moved back almost 25 minutes to start around 8:55 in the morning

# Transportation Access Master Plan

## Tavares Middle School: Transportation Access Master Plan



### LEGEND

**Schools**

- Public Schools Lake County
- Crossing Guard Locations
- Libraries
- 2-Mile Buffer of Tavares MS
- Tavares MS Attendance Zones (2010-2011)

**Bicycle/Pedestrian Crash Locations 01/2008 - 02/2012 (6 am - 7pm only)**

- Blayne Involved
- Pedestrian Involved

**Property Ownership**

- Parcels
- School Property
- Lake County Owned Property
- City Owned Property
- Church Owned Property
- Golf Owned Property
- Parks

**Transportation Network**

- Major Roads
- Local Roads
- Existing Sidewalks
- Existing Trails
- LakeXpress Bus Routes & Stops

**Identified Improvement Projects**

- Priority Projects (by Project ID)
- Recommended Projects

Source: FDOT, FDLE, Lake County School, LSPMO, HDR

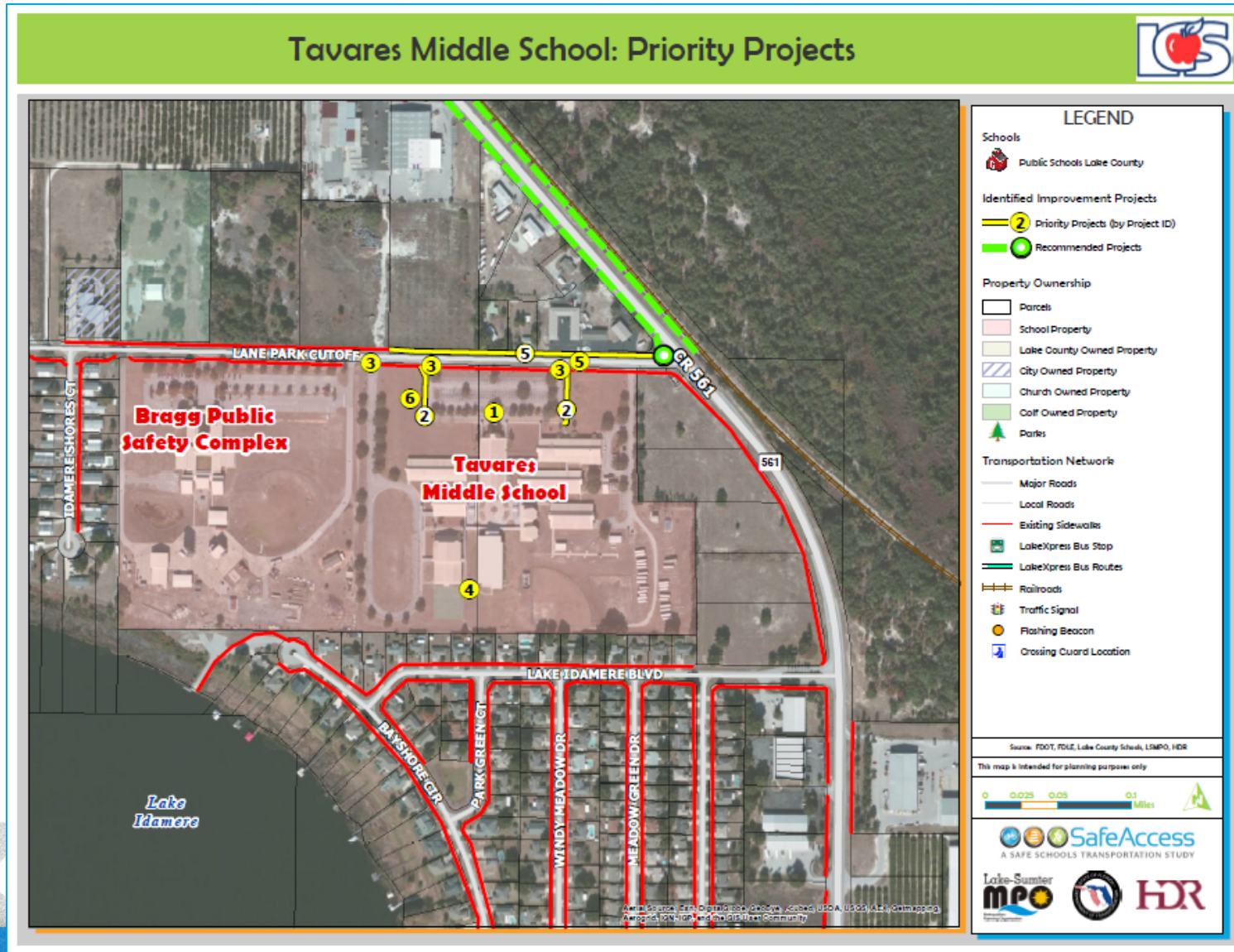
This map is intended for planning purposes only.

0 0.175 0.35 0.7 Miles

**SafeAccess**  
A SAFE SCHOOLS TRANSPORTATION STUDY

Lake-Sumter  
**mpo**

**HDR**



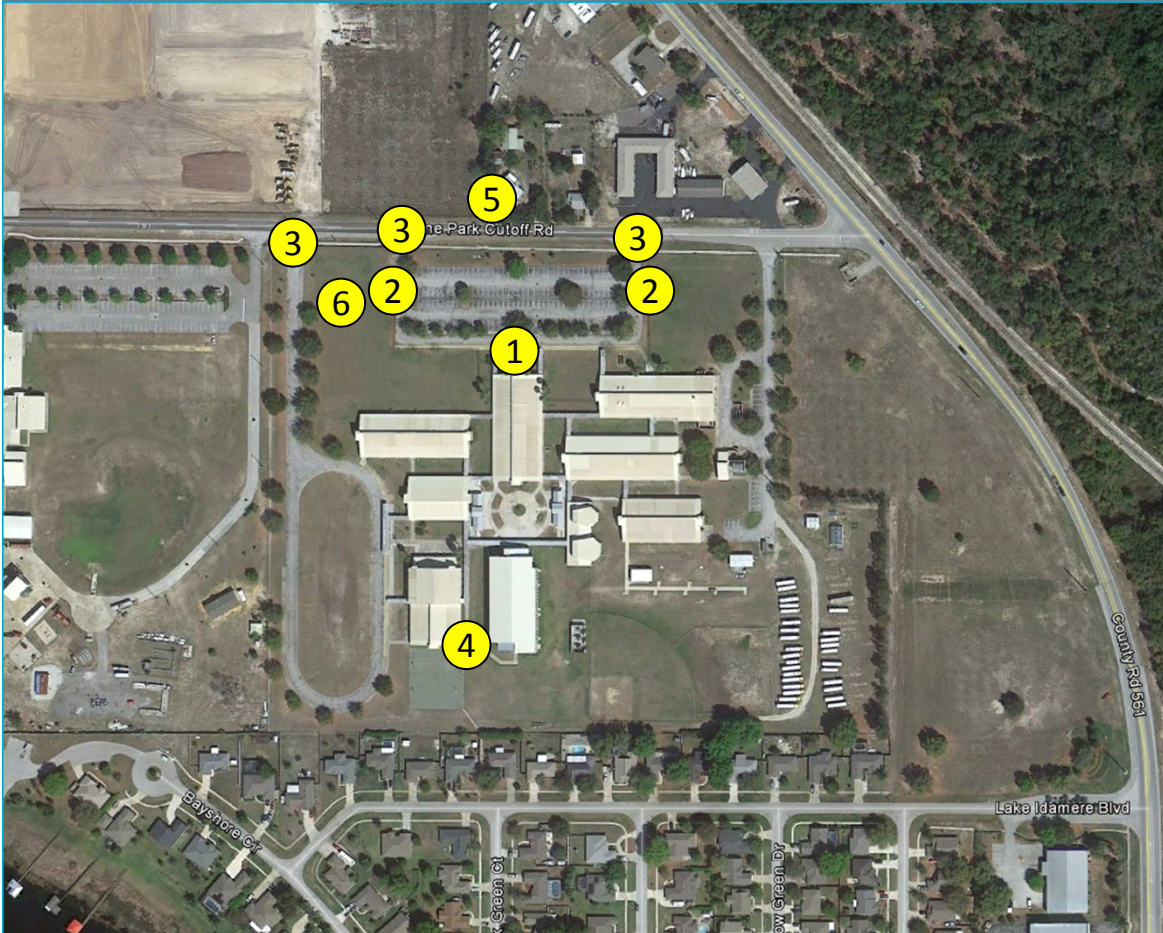


**SafeAccess**

A SAFE SCHOOLS TRANSPORTATION STUDY

## Tavares Middle School

# Recommended Priority Projects



### Recommendations:

1. Improve car loop amenities for students
2. Construct car loop sidewalk connection to Lane Park Cutoff Rd
3. Repaint school driveway crosswalks
4. Relocate bike rack; Install concrete pad and bike cage; Replace bike rack with inverted "U" or ribbon style bike rack
5. Construct new sidewalk on north side of Lane Park Cutoff Rd from CR 561 to The Big House
6. Expand car loop parking toward bus loop to provide more on site storage / event parking

# Recommended Project List

Project Number	Roadway	Location	Project
1	At School	Car Loop Ramp	Install benches, trash cans, and awnings for car ramp students
2	At School	Car Loop	Construct new sidewalk along both side of car loop to Lane Park Cutoff Road
3	Lane Park Cutoff Rd	All School Driveways	Repaint crosswalks for car loop and bus loop; extend island at bus loop to create refuge
4	At School	Bicycle Rack	Relocate bicycle rack; construct concrete pad and bike cage; install ribbon or inverted "U" style bike rack
5	Lane Park Cutoff Rd	CR 561 to The Big House	Add sidewalk on north side of road; install mid-block crosswalk in front of karate school
6	At School	Car Loop	Expand front parking lot on west side and have cars enter / exit from bus loop driveway; add new parking spaces for events





# Recommended Project #1

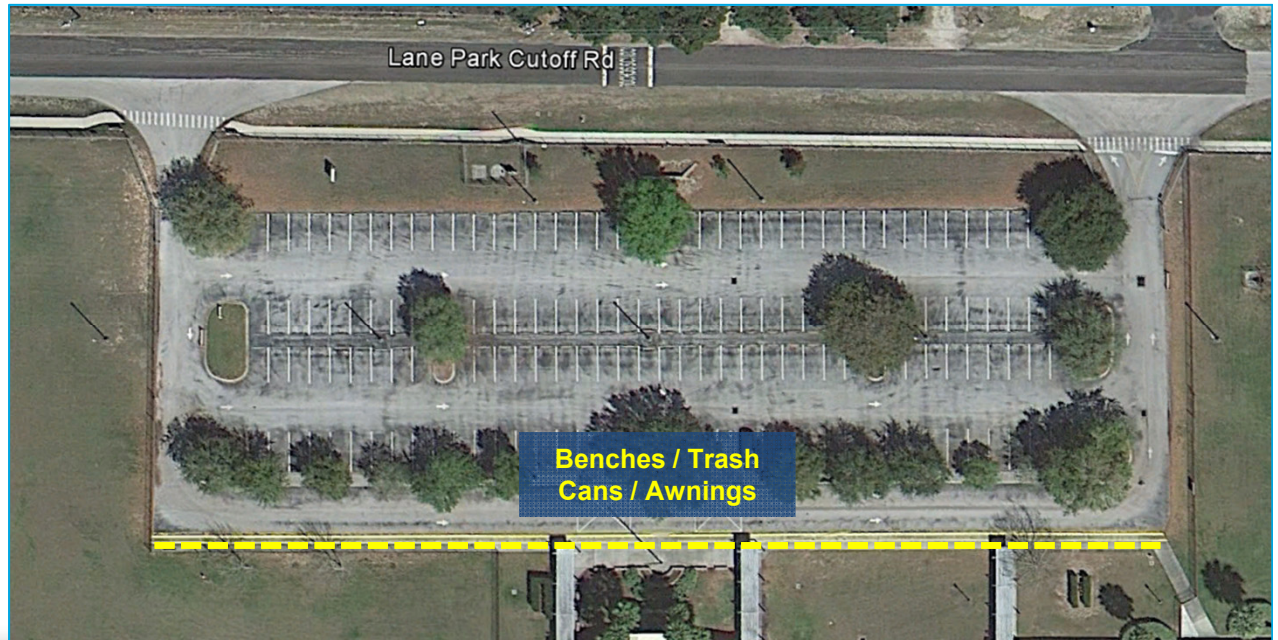
## Improved Amenities on Car Loop Ramp

### Recommendations:

- ✓ Install benches, trash cans, and awnings over pick-up / drop-off area to shelter waiting students from elements (approx. 490 ft)
  - ✓ Benches / low wall along backside of pick-up walkway could also deter parents from allowing younger siblings to run around property
  - ✓ Shelter and seating may increase appeal for students to wait for parents at the car loop
  - ✓ May improve vehicle queue on Lane Park Cutoff with reduced waiting times for parents



**EXAMPLE:** Cecil Gray Middle School with Covered Walkway, Benches, and Low Wall





A SAFE SCHOOLS TRANSPORTATION STUDY

Tavares Middle School

# Recommended Project #2

Car Loop Sidewalk Connects

## Recommendations:

- ✓ Construct new sidewalk on east and west sides of car loop / parking area to provide connects to existing Lane Park Cutoff Road sidewalk
  - ✓ Preferred sidewalk width of 8' (minimum sidewalk width of 5')
  - ✓ Would require relocation of existing fencing to provide space for new sidewalks





A SAFE SCHOOLS TRANSPORTATION STUDY

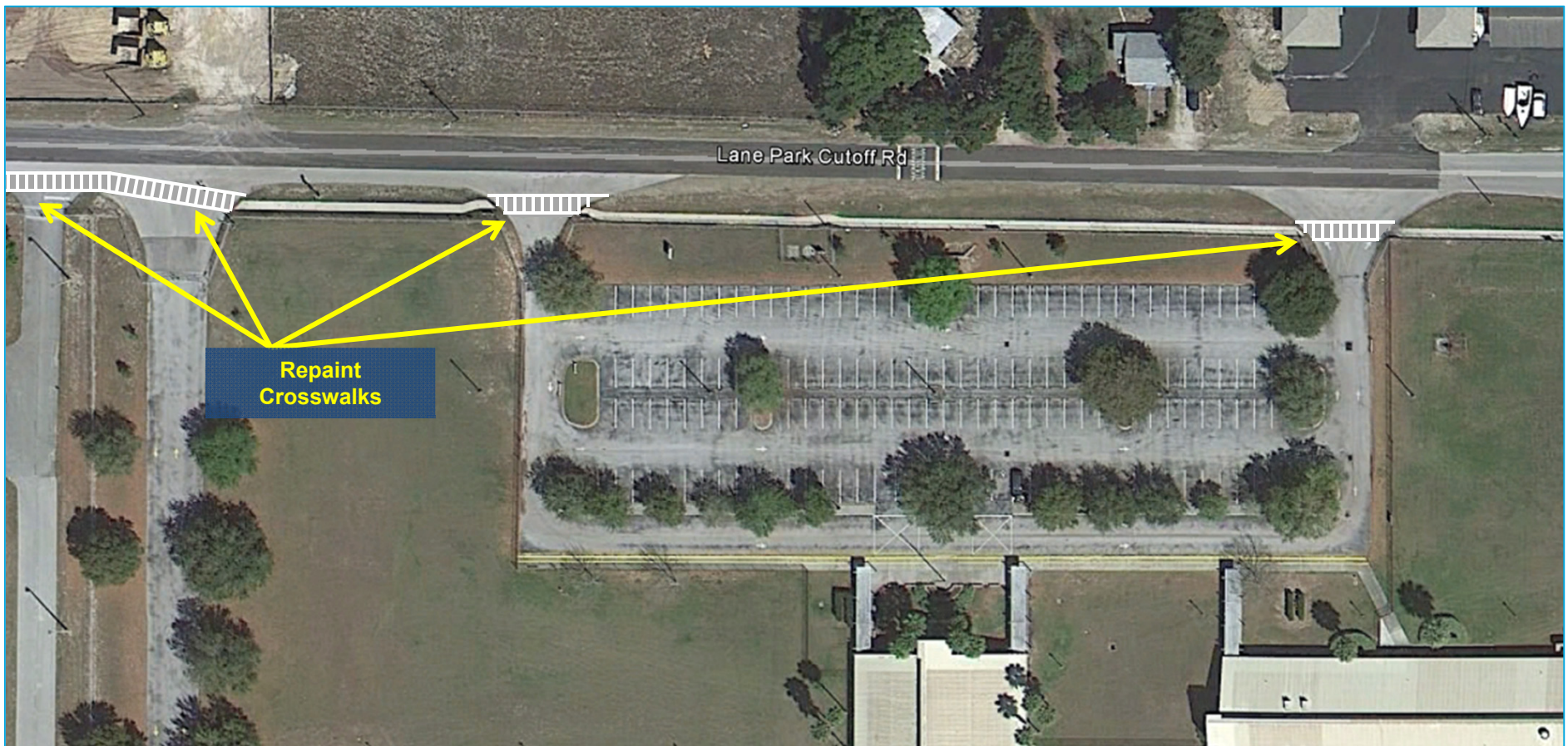
Tavares Middle School

# Recommended Project #3

## Repaint School Crosswalks / Extend Island at Bus Loop

### Recommendations:

- ✓ Repaint crosswalks as high visibility ladder style at all school driveways





A SAFE SCHOOLS TRANSPORTATION STUDY

Tavares Middle School

# Recommended Project #3

## Repaint School Crosswalks / Extend Island at Bus Loop

### Recommendations:

- ✓ Extend island between bus loop and Public Safety Complex to separate driveways and create pedestrian refuge
- ✓ Realign sidewalk and crosswalks

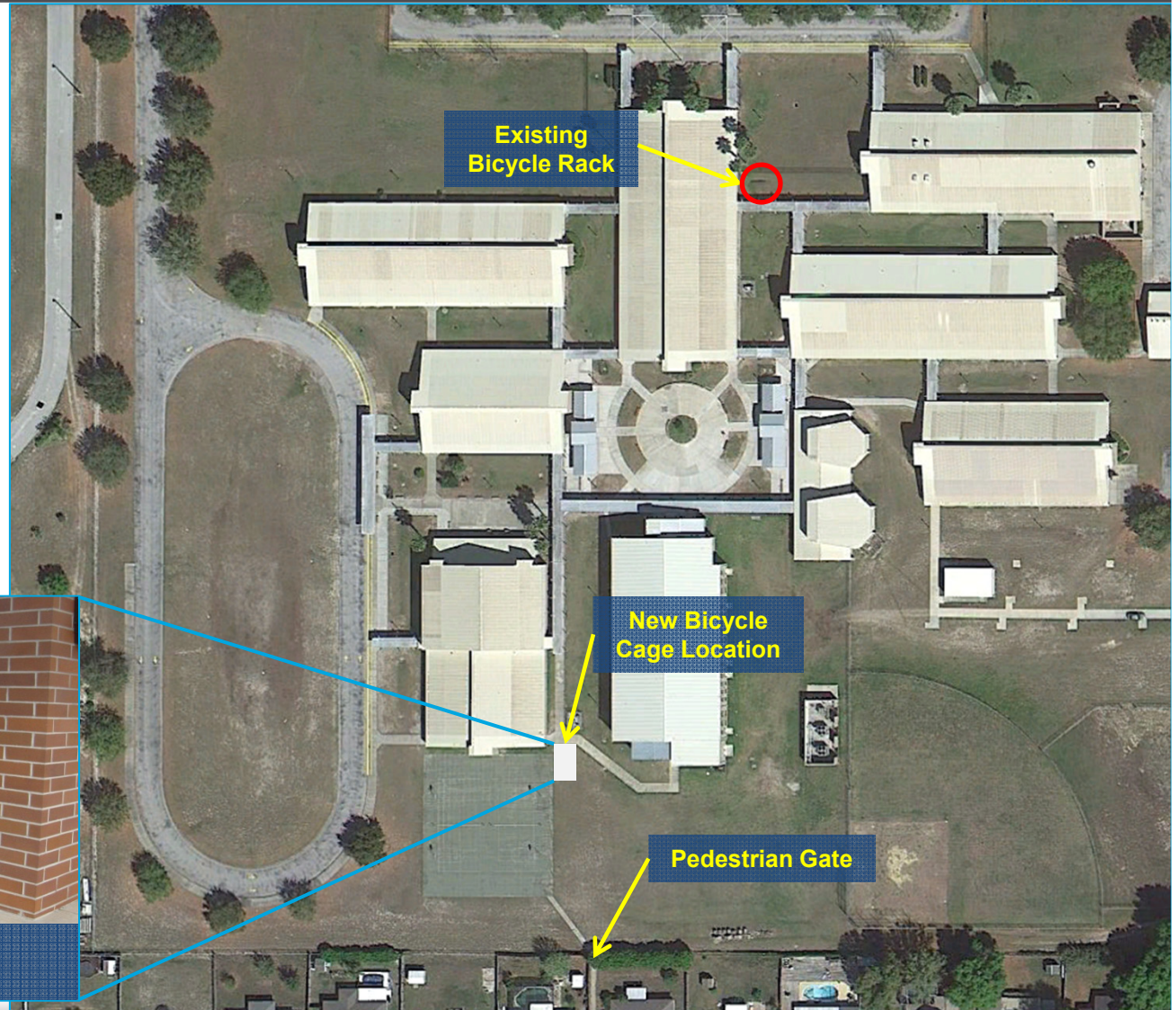


# Recommended Project #4

## Relocate / Improve Bicycle Parking

### Recommendations:

- ✓ Relocate bicycle rack to back of school closer to pedestrian gate
- ✓ Replace bicycle rack with inverted “U” or ribbon style bicycle rack
- ✓ Install bike cage to secure bikes during school
- ✓ Construct concrete pad



**EXAMPLE: East Ridge Middle School Secure Bicycle Parking with Ribbon Style Bike Rack**



A SAFE SCHOOLS TRANSPORTATION STUDY

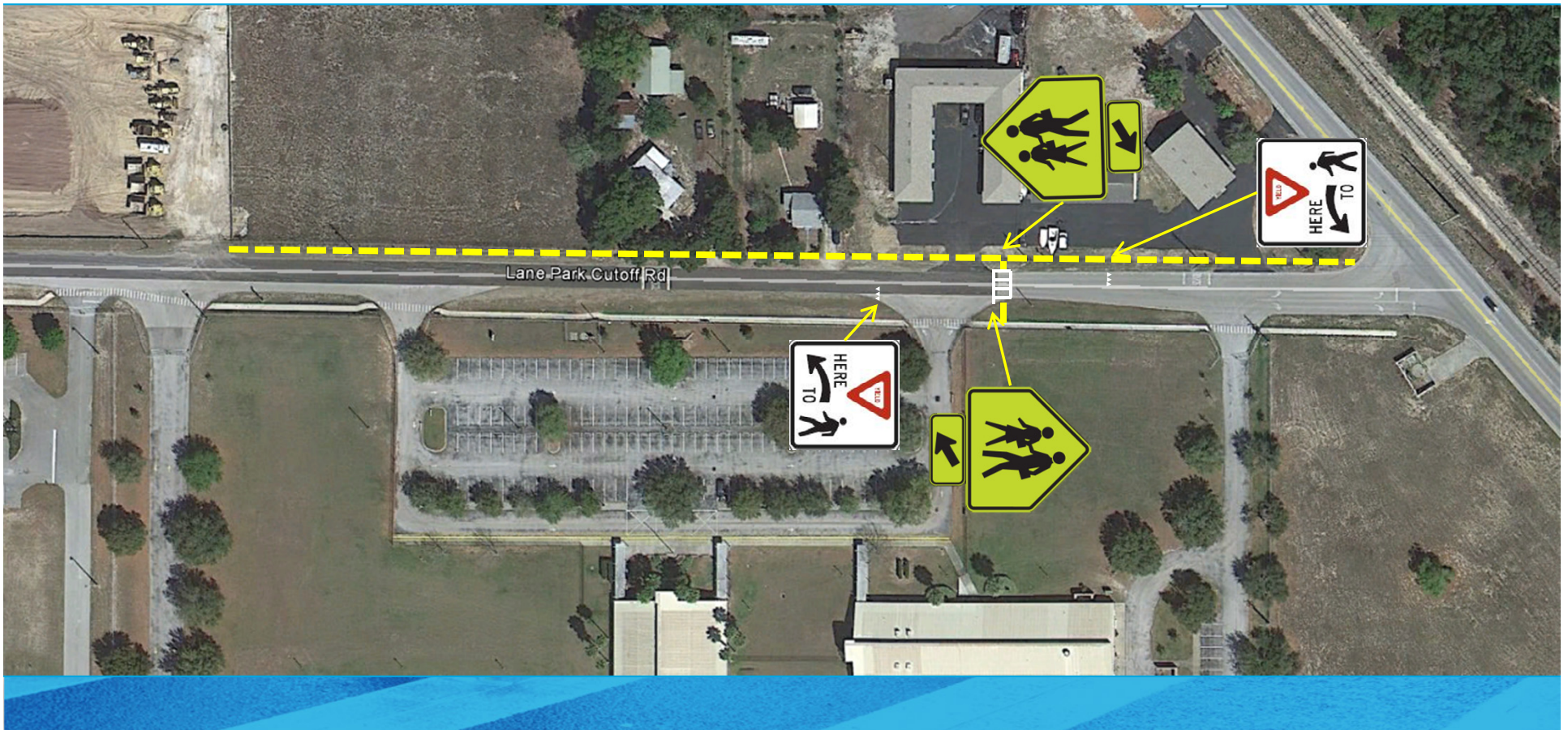
Tavares Middle School

# Recommended Project #5

## Construct Lane Park Cutoff Road Sidewalk

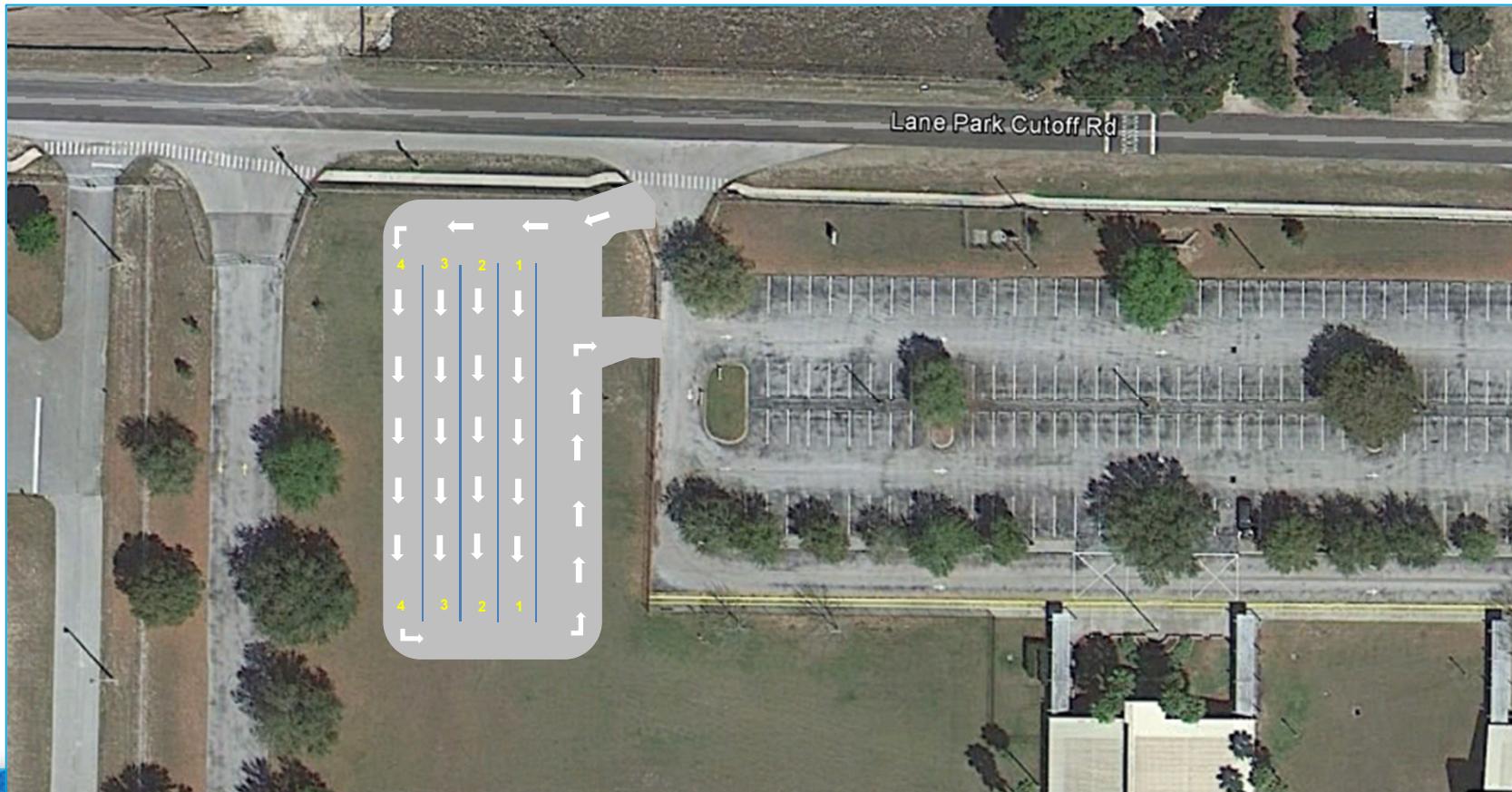
### Recommendations:

- ✓ Add sidewalk on north side of Lane Park Cutoff Road from CR 561 to The Big House
- ✓ Install mid-block crosswalk to Karate School on north side of road



## Recommendations:

- ✓ Add pull through queue space – 4 rows, after lot is full, cars queue in rows starting with 1 through 4 then pull forward back into lot beginning with row 1, a similar queue is used at Lost Lake ES and is pictured on the next page, may require staff to direct traffic.





A SAFE SCHOOLS TRANSPORTATION STUDY

Tavares Middle School

# Recommended Project #6

Expand Car Loop

## Recommendations:

- ✓ Similar approach at Lost Lake ES





Priority #	Item	Quantity	Units	Total
2	Sidewalk	400	ft	\$72,200.00
3	Crosswalk	195	ft	\$435.00
3	Island	1	Ext	\$24,900.00
5	Crosswalk Signs	4	Signs	\$1,200.00
5	Crosswalk	25	ft	\$56.00
5	Sidewalk	2	Signs	\$1,000.00
6	Car Loop Expansion	1	Exp	\$144,000.00
6	Car Loop Arrows	35	Arrows	\$3,500.00

### ESTIMATE BASIS AND ASSUMPTIONS:

- Sidewalk estimates based on estimating tool developed for Phase 1, Estimates for all other improvements based on Unit Costs per FDOT Lake County (Area 7) averages (07/2011 - 06/2012).
- Estimate does not include design costs, CEI costs, or utility relocation costs, utility relocation assumed by others.
- The mobilization costs are based on 15% of the construction cost and estimates include maintenance of traffic costs (15% of construction costs).
- Regular excavation & embankment to 1 ft depth is assumed
- No R/W costs included
- No specialized landscaping (beyond sodding) is included.
- Sidewalk is assumed to be 5 feet wide, unit given is in linear feet.

# Other Recommendations

Roadway	From/To	Project
CR 448	CR 561 to Lake Industrial Blvd	Add sidewalk on both sides
CR 561	SR 19 to Lake Park Cutoff Rd	Add sidewalk on both sides
SR 19	CR 561 to Oak Bend subdivision	Add sidewalk on west side





A SAFE SCHOOLS TRANSPORTATION STUDY

Tavares Middle School

# Other Sidewalk Project

## CR 448 Sidewalk

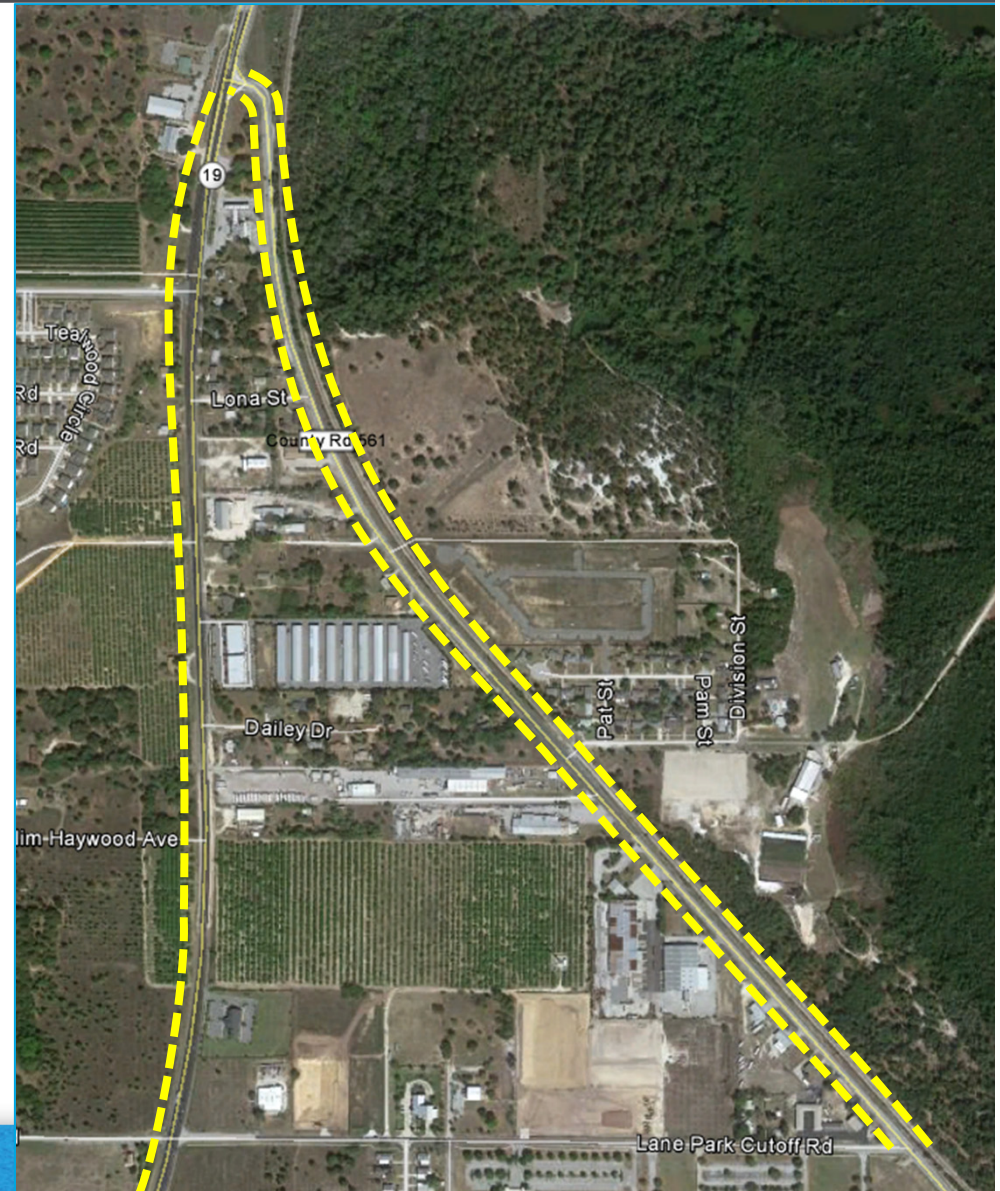
### Recommendations:

- ✓ Add sidewalk on both sides of CR 448 from CR 561 to Lake Industrial Blvd



## Recommendations:

- ✓ Close sidewalk gaps on both sides of CR 561 and extend from SR 19 to Lane Park Cutoff Rd
- ✓ Add sidewalk on west side of SR 19 from CR 561 to Oak Bend subdivision
  - ✓ Coordinate with SR 19 Future Plans Project





Tavares Middle School

## Contact Information

This website represents an ongoing commitment to increase safe access to schools within the Lake~Sumter Metropolitan Planning Organization Planning Area.

Updates to data, and suggestions for programming and project ideas are welcome from all agencies and the general public.

**Mike Woods**

Project Manager, Transportation Planner

(352) 315-0170

[mwoods@lakesumtermpo.com](mailto:mwoods@lakesumtermpo.com)



**Mindy Heath, AICP**

Consultant Project Manager

(407) 420-4200

[Mindy.heath@hdrinc.com](mailto:Mindy.heath@hdrinc.com)



*Promoting Regional  
Transportation Partnerships*