



A SAFE SCHOOLS TRANSPORTATION STUDY

Umatilla High School

Umatilla, FL



July 2013

Umatilla High School Snapshot



9-12th Grade

Total Students: 790

- Provided Bus Transportation: 297
- Not Provided Bus Transportation: 493

Students Living in the “Walk Zone”: 241

- Provided Bus Transportation: 18
- Not Provided Bus Transportation: 223

Observation Day (Clear)

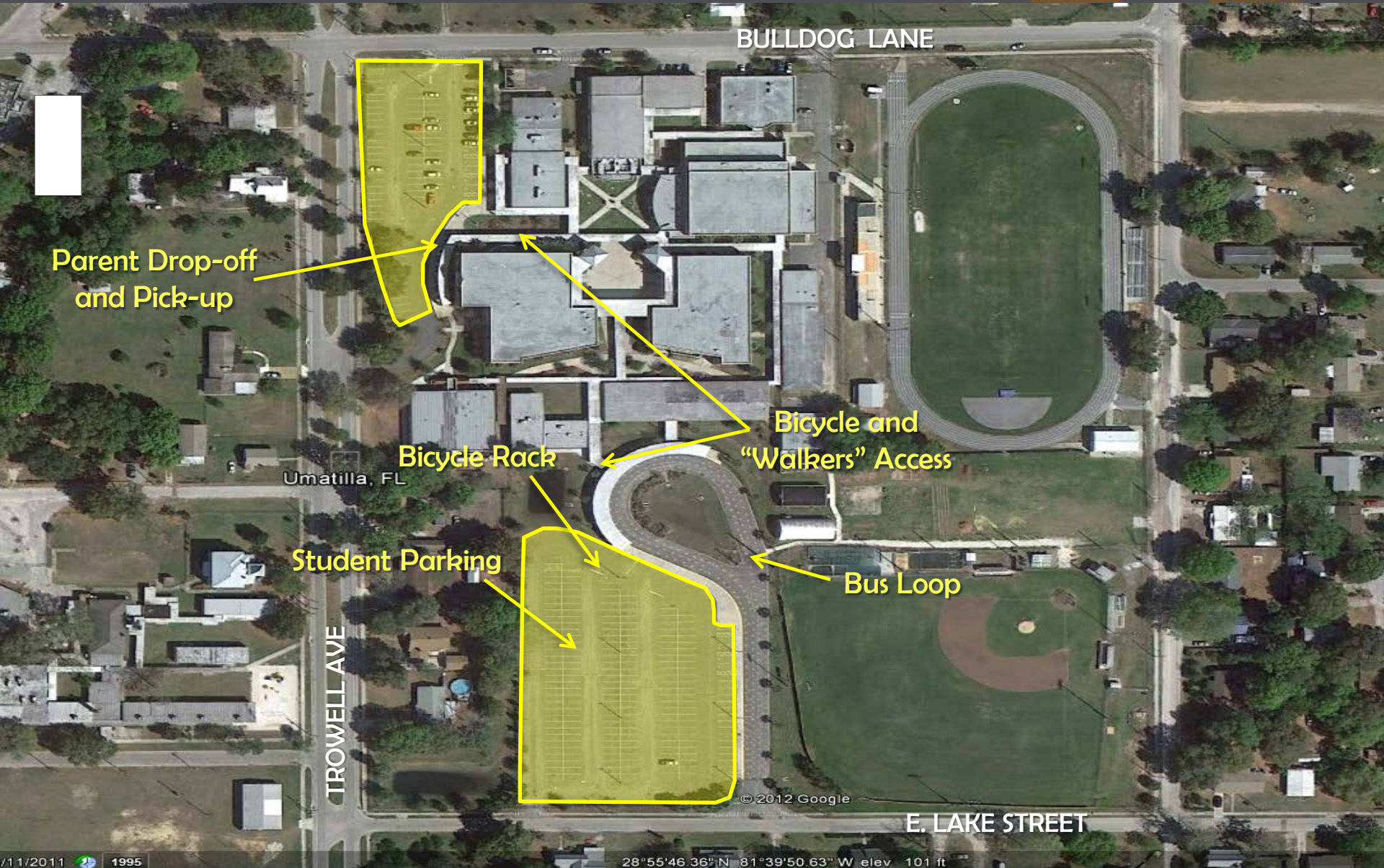
- Walker’s (estimated): 250
- Bike Riders: 3



✓ School website – click [here](#)

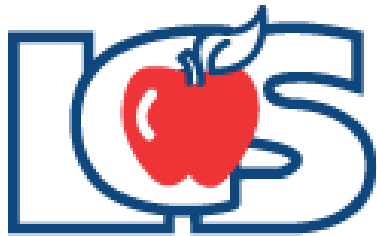
✓ City of Umatilla website – click [here](#)

✓ Lake County School District website – click [here](#)



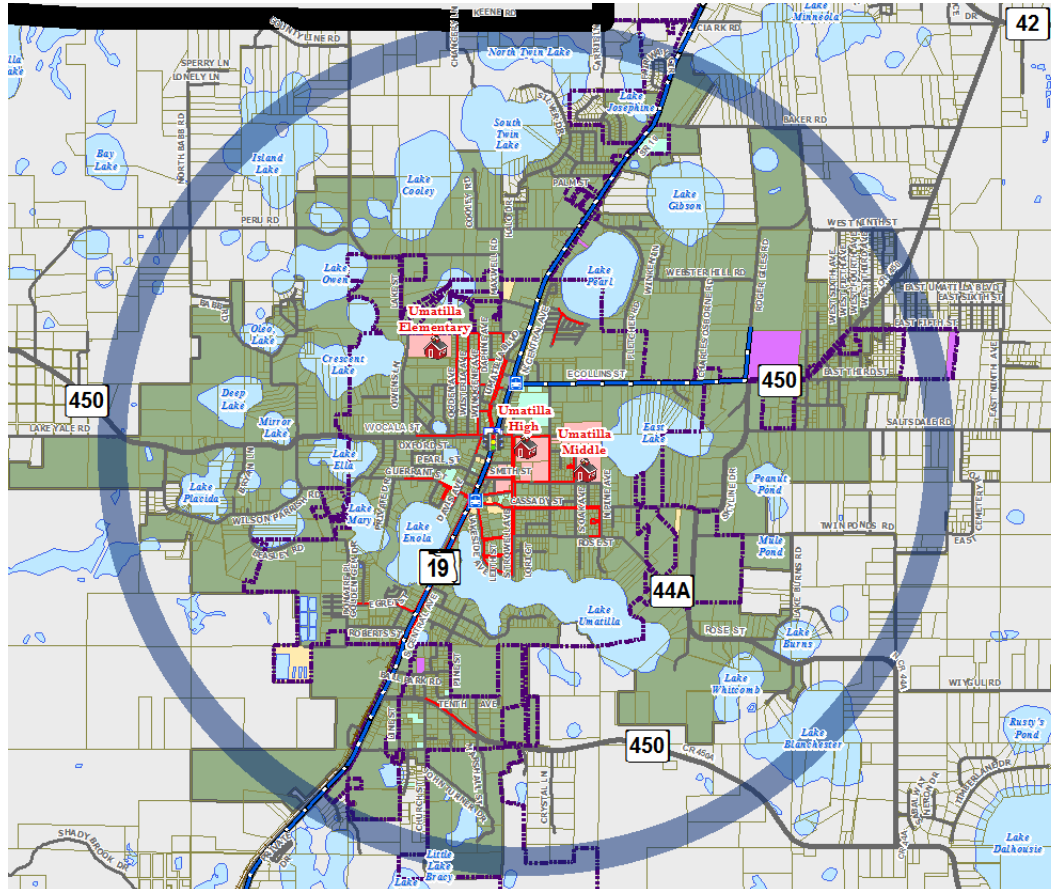
Findings:

- ✓ On June 24, 2013 the Lake County School Board voted to formally discontinue all courtesy busing for elementary and middle school students who live within the 2-mile walk zone of the school.
 - ✓ By state law, Florida provides transportation funding only for traditional education students that live two or more miles from the school. The Lake County School Board unanimously made the decision to discontinue the service as it seeks cost-cutting measures to close a \$16 million gap in for the 2013 – 2014 proposed budget.
 - ✓ This essentially makes the new parent responsibility zone equal to the 2-mile walk zone, except for schools with identified Hazardous Walking Areas.



Umatilla High School

Attendance Zone and 2-Mile "Walk" Zone Map



Legend: Existing Conditions

- | | | | | |
|--------------------------|---|--------------------------|---------------------------------------|--------------|
| Phase 3 Schools Studied | Umatilla High School Attendance Zone
(Entire 2-Mile "Walk Zone" Area Included) | Parcels | 2-Mile Buffer of Umatilla High School | |
| Crossing Guard Locations | Inside FTE Zone and Inside PRZ | School Property - Public | Major Roads | |
| Existing Sidewalks | | Church Owned Property | Local Roads | DRAFT |
| Existing Trails | | County Owned Property | Railroads | |
| | | City Owned Property | Traffic Signal | |
| | | Water Bodies | LakeXpress Bus Stops | |
| | | City Limit | Route 4: Altoona to Zellwood | |

7:00 AM: Gates open at 7am for all bikers, walkers, buses, and car riders.

7:34 AM: School Starts

3:54 PM: School Dismissed

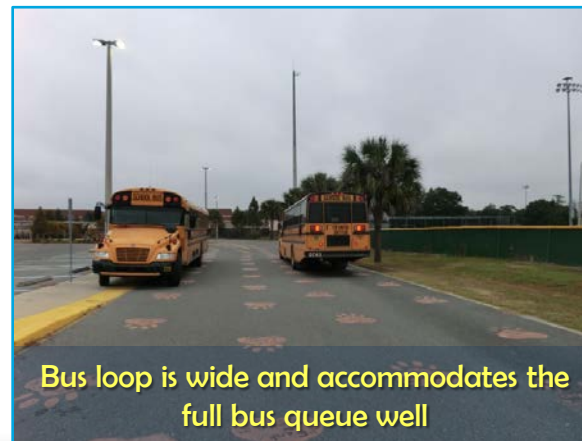
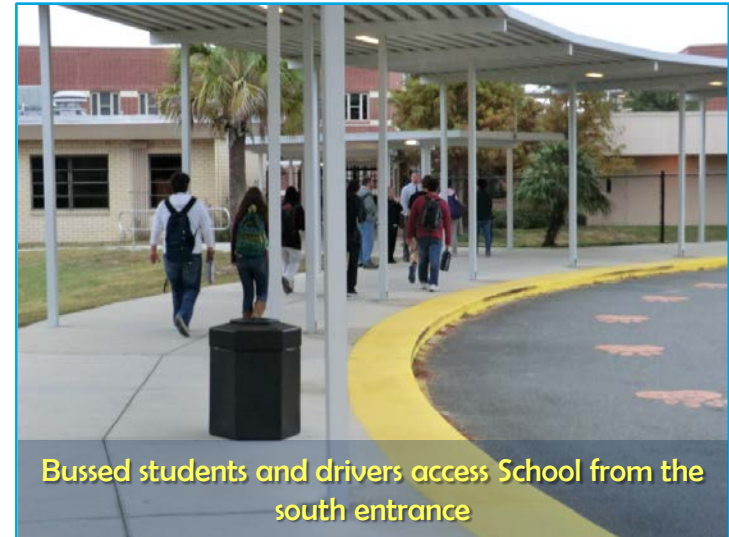
Early Dismissal Every Wednesday:

2:54 PM: Students Dismissed



Findings:

- ✓ The bus loop access is located on the south side of the school campus off E. Lake Street.
- ✓ Bus loop access road is the same access point for bicyclists and includes adequate lighting.
- ✓ Operations in the bus loop and loading/unloading work well for both arrival and dismissal times. Asst. Principal greets students as they come off the bus. Bus loop queue of 14 total are single queued in PM.



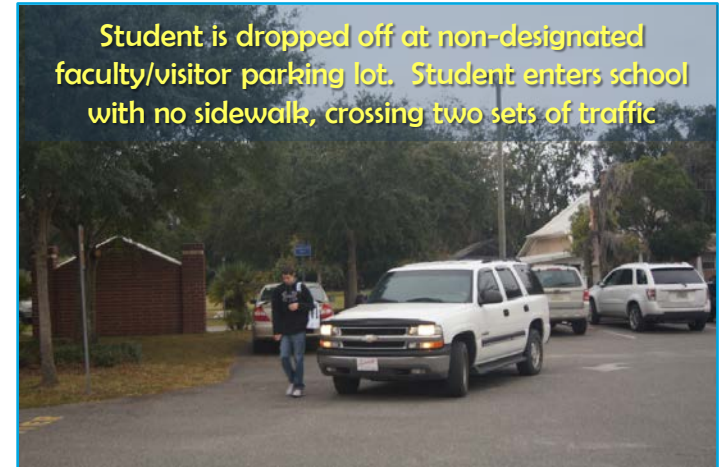
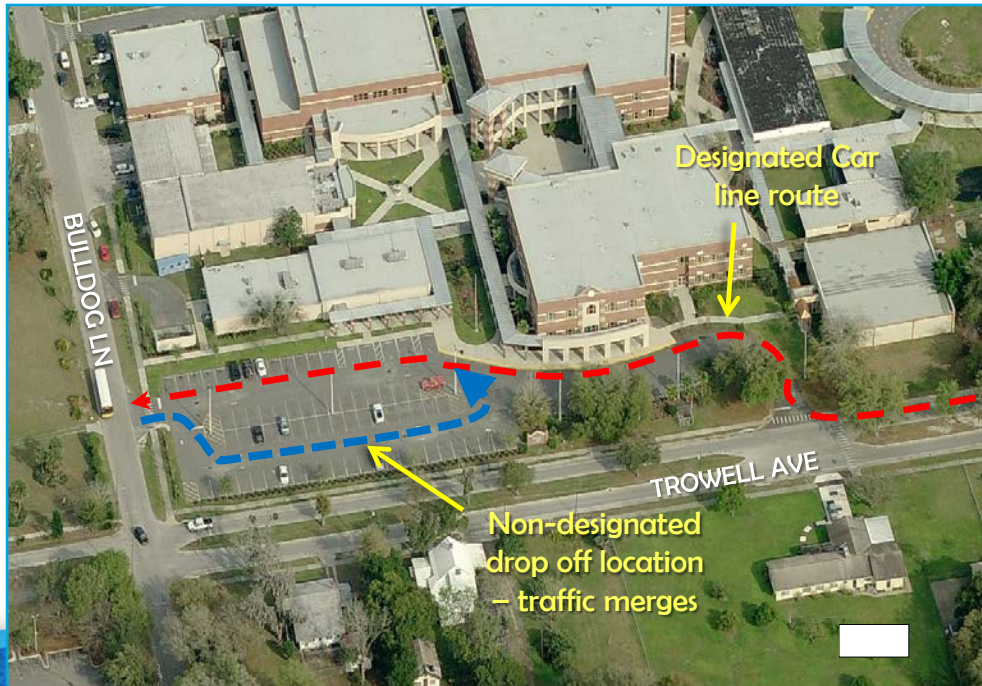
Findings:

- ✓ Drop-off and pick-up occur on the west side of campus, adjacent to the faculty/visitor parking lot.
- ✓ Car line queue a few blocks south onto Trowell Avenue during arrival and dismissal; however Trowell Avenue NB is a two-lane road and the current volume of cars proceeding to drop-off and pick-up entrance are manageable as cars queue behind each other in the far right lane along Trowell Avenue.



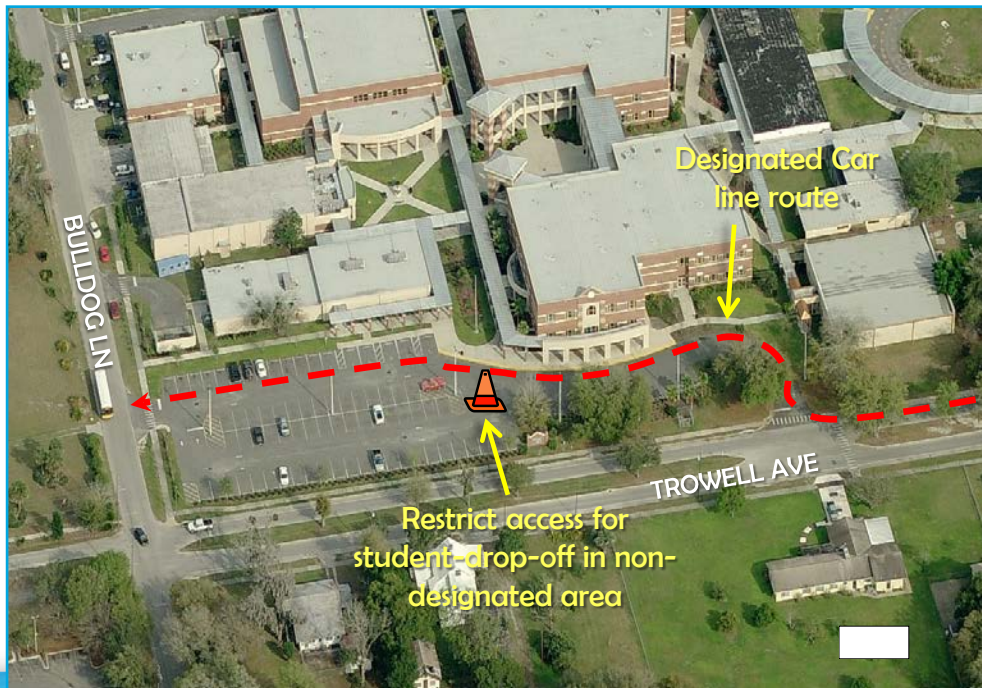
Findings (continued):

- ✓ Access to the faculty/visitor parking lot area is off Bulldog Lane (north side of campus). Parents were observed dropping their students off at this location to avoid the longer car line off of Trowell Avenue. These two, close locations where drop-offs are occurring in high volume pose a danger to students and vehicles, especially during arrival times.



Recommendation:

- ✓ Restrict access for parents to drop students off at non-designated area in faculty/visitor parking lot in front of school
- ✓ Restrict and monitor parents drop-off location on north side of school by school/parent coordination



Student is dropped off at non-designated faculty/visitor parking lot. Student enters school with no sidewalk, crossing two sets of traffic



Parents observed near faculty/visitor lot exit along Bulldog Lane avoiding car line



Findings:

- ✓ There is currently two funded crossing guards for Umatilla Middle School and Umatilla High School that cross students safely across SR 19 at Ocala St/Bulldog Lane (five point) signalized intersection with signalized crosswalk
- ✓ Observed approximately 20 students (Middle and High School aged) being crossed by crossing guards



Findings:

- ✓ Walkers are allowed to access the front entrance to the school from Trowell Ave or Bulldog Lane. Bicyclists enter the school from the south side of campus off E. Lake Street
- ✓ The bicycle rack is located at the north end of the student parking lot on the south side of campus.
- ✓ Approximately 250 walkers were observed entering/exiting campus throughout the day. Two bicyclists were observed at the school and none wore a helmet.

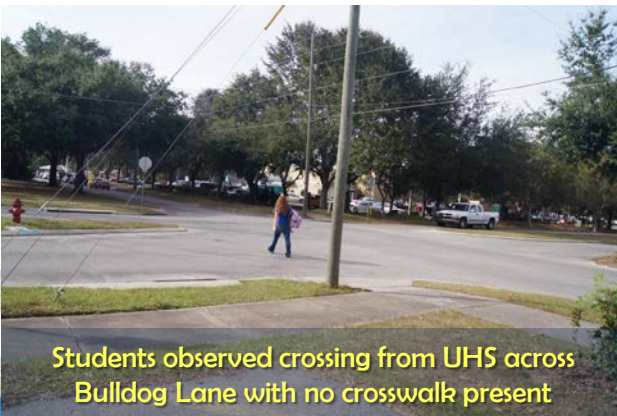


Findings:

- ✓ Walkers and bicyclists are released first before all other students at 3:54 PM from the school's main entrance. Due to lack of sidewalks and crosswalks crossing Trowell Avenue at Bulldog Lane, many walkers, once dismissed, walk directly across Trowell Avenue, where the fastest route is possible for them. Many students were observed walking to and from the McDonald's after dismissal.

Recommendation:

- ✓ Consider installing crosswalks and American with Disabilities (ADA) compliant curb ramps at all four legs at intersection of Trowell Avenue and Bulldog Lane (see Other Recommended projects for more details)



LakeXpress Transit Stop – North of SR 19 and Bulldog Ln

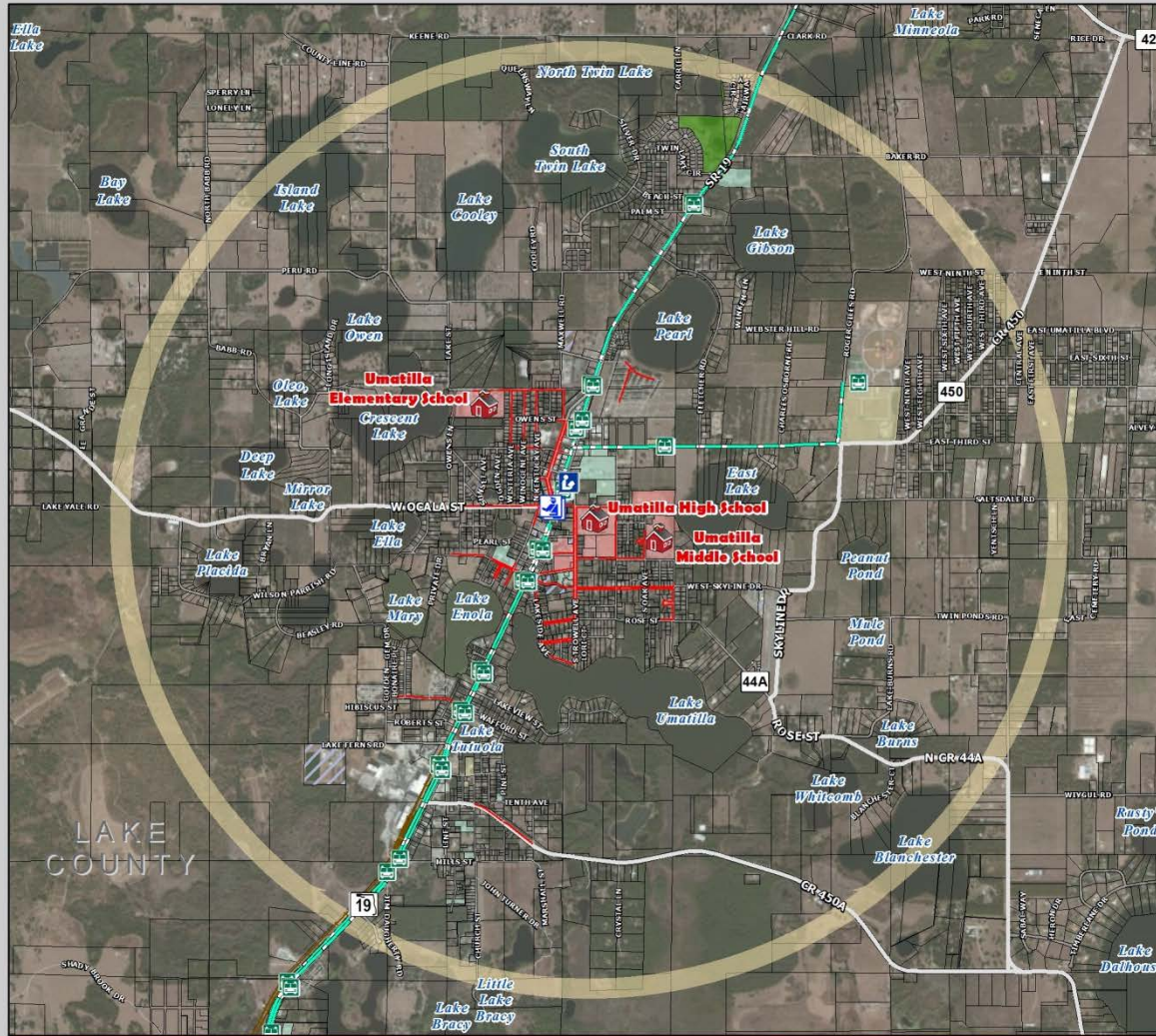
Findings:

- ✓ LakeXpress Route 4: Altoona to Zellwood runs daily and offers Umatilla HS students an excellent opportunity to choose public transportation as a means to getting to school. Recently, bus shelters have been upgraded at stop locations. For more information, please visit http://www.ridelakexpress.com/routes/route_4.aspx



Umatilla High School

Umatilla High School: Existing Conditions Map



LEGEND

Schools

- Public Schools Lake County
- Crossing Guard Locations
- Libraries
- 2-Mile Buffer of School

Property Ownership

- Parcels
- School Property
- Lake County Owned Property
- City Owned Property
- Church Owned Property
- Golf Owned Property

Parks

- Parks

Transportation Network

- Major Roads
- Local Roads
- Existing Sidewalks
- LakeXpress Bus Stop
- LakeXpress Bus Routes
- Railroads
- Traffic Signal (State Roads)
- Flashing Beacon

Source: FDOT, Lake County Schools, Lake-Sumter MPO, and TranSystems
This map is intended for planning purposes only

0 0.2 0.4 0.8 Miles

SafeAccess
A SAFE SCHOOLS TRANSPORTATION STUDY

Lake-Sumter MPO TranSystems

Findings:

- ✓ The City of Umatilla is currently coordinating with the Florida DOT District 5 to install new signalized intersections and signalized crosswalks and crosswalk crossings at the following locations as previously identified in the FDOT SR 19 Corridor Study:
 - ✓ SR 19 @ Guarrant Street/Cassady Street
 - ✓ SR 19 @ CR 450E/E. Collins Street



See Recommended Projects Section of report – Blue line reflects consultant recommended sidewalk improvement



FINAL SR 19 Corridor Study

January 2011

Prepared by:

HNTB
HNTB Corporation
300 Primera Boulevard
Suite 200
Lake Mary, FL 32746
(407) 805-0355

Prepared for:



Findings:

- ✓ The City of Umatilla is constructing a multi-use trail that will connect from CR 450/E. Collins Street to Bulldog Lane. Construction for the trail has already begun and once completed, will serve both citizens and students of Umatilla Elementary, Umatilla Middle, and Umatilla High School's alike. The 2009 SR 19 Corridor Study identified the needed improvements.



Recommended Project List

Project Description	SAS Priority Project #	On/Off Campus
Ocala Street 5' sidewalk (south side) from Kentucky Ave to existing sidewalk at SR 19 crossing with ADA improvements	1	Off Campus
Bulldog Lane 5 ' sidewalk (south side) from existing sidewalk to Trowell Avenue with ADA compliant crosswalks.	2	Off Campus
Orange Avenue 5' sidewalk (west side) from Bulldog Lane to E. Collins St	3	Off Campus
E Collins Street 5' sidewalk (north side) from Orange Avenue to W. Ninth Ave (connect to North Lake Community Park)	4	Off Campus



Recommended Project #1 Ocala St. Sidewalk (South Side)

Recommendation:

- ✓ Construct 5' sidewalk on the south side of Ocala Street from Kentucky Ave to existing SR 19 crosswalk – including ADA compliant curb ramps.
- ✓ Project would serve Umatilla Middle School, Umatilla High School, and Umatilla Elementary School students.



Recommended Project #1 Ocala St. Sidewalk (South Side)

- ✓ Add sidewalk from Kentucky Ave to existing signalized crosswalk.

BEFORE:



Recommended Project #1 Ocala St. Sidewalk (South Side)

- ✓ Add sidewalk from Kentucky Ave to existing signalized crosswalk.

AFTER:



Recommended Project #2 Bulldog Ln. Sidewalk (South Side)

Recommendation:

- ✓ Construct 5' sidewalk on the south side of Bulldog Lane from existing sidewalk to Trowell Avenue including crosswalk signage and markings with ADA curb ramps.
- ✓ Project would serve Umatilla Middle School, Umatilla High School, and Umatilla Elementary School students.



Recommended Project #2 Bulldog Ln. Sidewalk (South Side)

- ✓ Add sidewalk from existing to Trowell Ave with added crosswalks

BEFORE:



Recommended Project #2 Bulldog Ln. Sidewalk (South Side)

- ✓ Add sidewalk from existing to Trowell Ave with added crosswalks

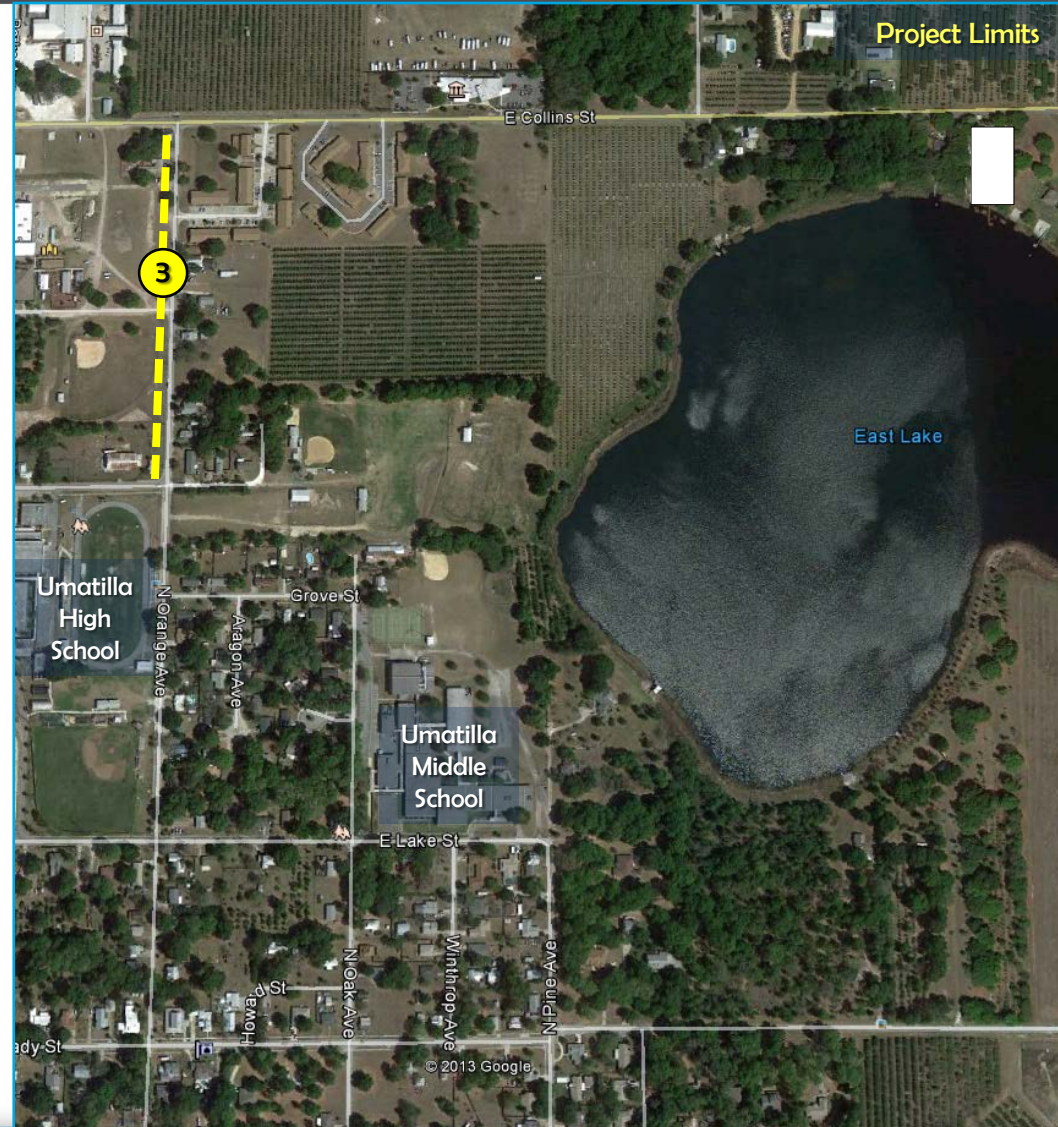
AFTER:



Recommended Project #3 Orange Ave. Sidewalk (West Side)

Recommendation:

- ✓ Construct 5' sidewalk on the west side of Orange Avenue. Constructing the sidewalk will allow for full sidewalk connectivity along Orange Avenue for Umatilla Middle School walkers and bicyclists. This project should be constructed in conjunction with Recommended Project #6 (E. Collins Street Sidewalk).
- ✓ Project would serve both Umatilla Middle School and Umatilla High School students.



Recommended Project #4 E. Collins St. Sidewalk (North Side)

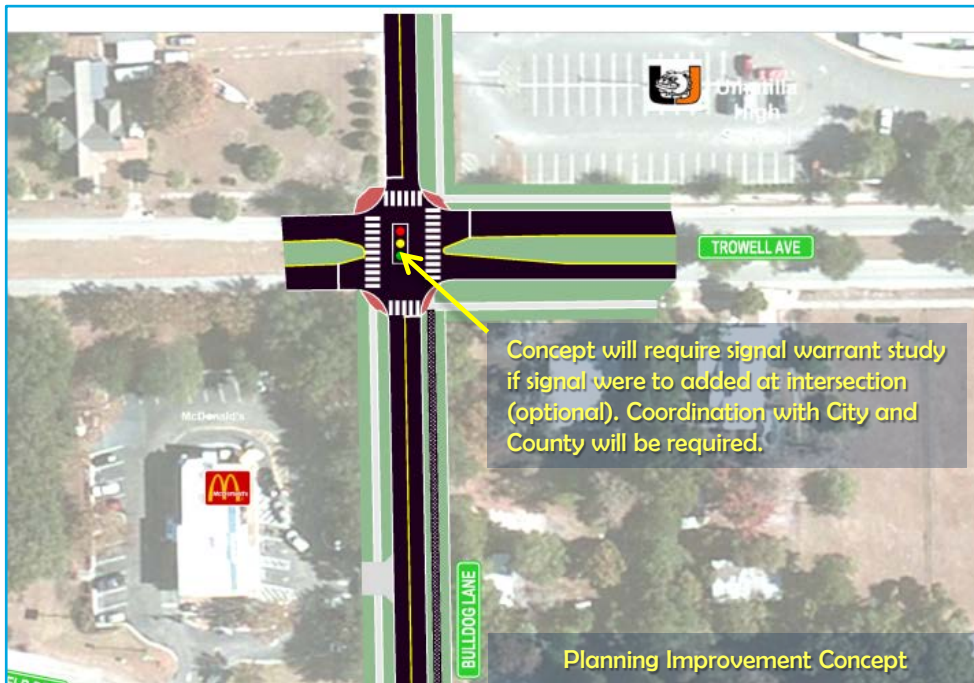
Recommendation:

- ✓ Construct 5' sidewalk on the north side of E. Collins Street with crosswalk and crosswalk signage connecting to Orange Avenue. This project should be constructed in conjunction with Recommended Project #5 (Orange Avenue Sidewalk).
- ✓ Project would serve both Umatilla Middle School and Umatilla High School students.



Recommendation:

- ✓ Walkers and bicyclists are released first before all other students at 3:54 PM from the school's main entrance. Due to lack of sidewalks and crosswalks crossing Trowell Avenue at Bulldog Lane, many walkers, once dismissed, walk directly across Trowell Avenue, where the fastest route is possible for them. Many students were observed walking to and from the McDonald's after dismissal. As many as 100 walkers were observed crossing at this intersection with a dedicated crosswalk. A longer-term solution may be to consider a signal warrant study if supported by the Lake County School Board and the City of Umatilla.



Potential Improvement Option: Sidewalk Improvements

BEFORE:



Potential Improvement Option: Sidewalk Improvements

AFTER:



This website represents an ongoing commitment to increase safe access to schools within the Lake~Sumter Metropolitan Planning Organization Planning Area.

Updates to data, and suggestions for programming and project ideas are welcome from all agencies and the general public.

Mike Woods

Project Manager, Transportation Planner

(352) 315-0170

mwoods@lakesumtermpo.com



Doug Lynch, GISP

Consultant Project Manager

(407) 875-8938

dwlynch@transystems.com



*Promoting Regional
Transportation Partnerships*