



# SafeAccess

A SAFE SCHOOLS TRANSPORTATION STUDY

# Mount Dora High School Mount Dora, FL

MOUNT DORA  
HIGH SCHOOL

---Tastina Costa  
Saturday May 18  
6:30pm \$15  
Hurricane Co's!

August 2013

HDR

Lake-Sumter  
**mco**  
Metropolitan  
Planning Organization

# Mount Dora High School Snapshot

May 1, 2013

Grades: 9<sup>th</sup> – 12<sup>th</sup>

**Total Students:** 1,037

- Provided Bus Transportation: 419
- Not Provided Bus Transportation: 618
- Buses Assigned to School (13 reg, 2 ESE) 15

**Students Living within the “Walk Zone”:** 298

- Provided Bus Transportation: 26
- Not Provided Bus Transportation: 272

**Observation Day (Overcast)**

- Walkers: 150
- Bike Riders: 5



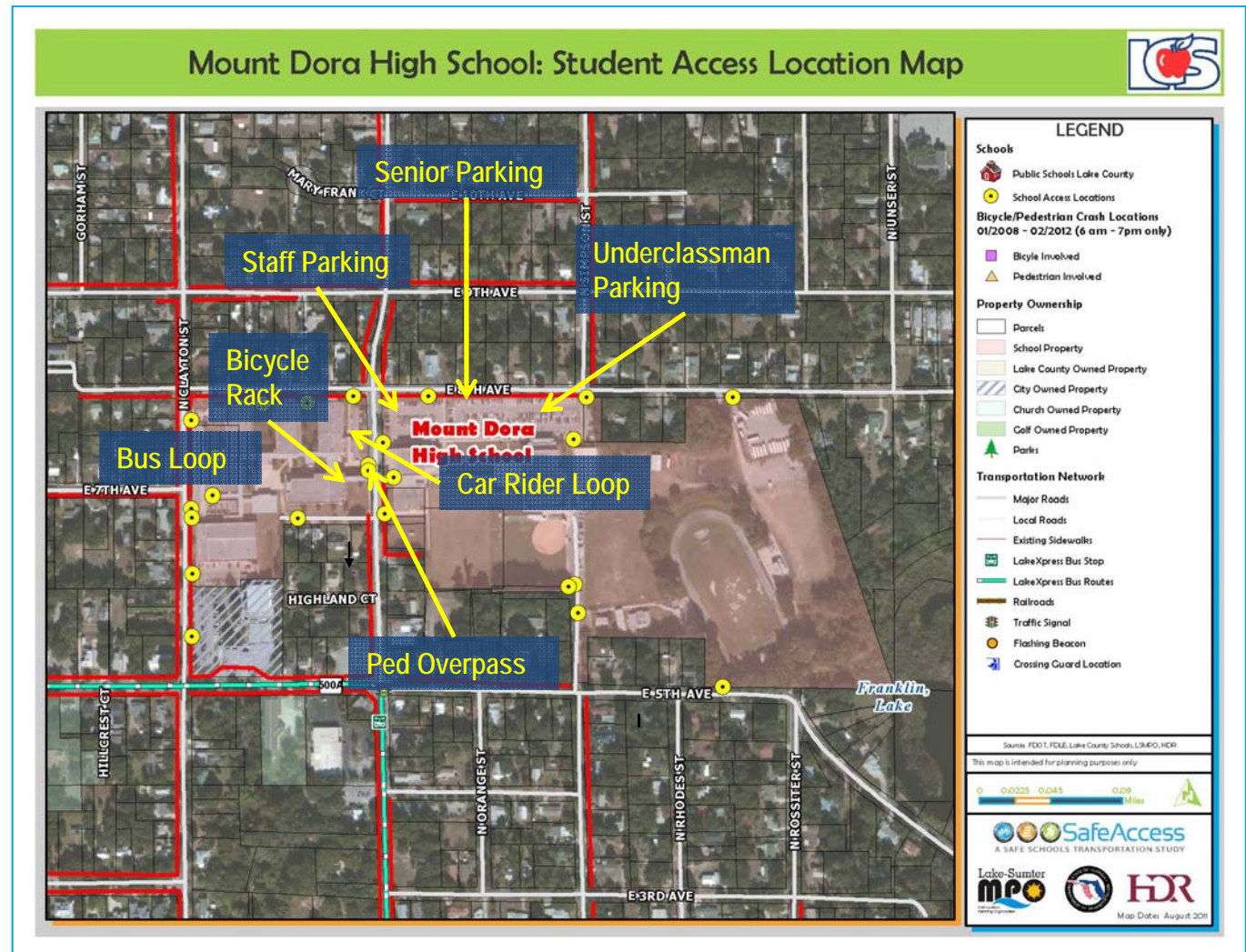
- ✓ Mount Dora School website – Click [here](#)
- ✓ City of Mount Dora website – Click [here](#)
- ✓ Lake County Schools website – Click [here](#)



## Mount Dora High School

### Findings:

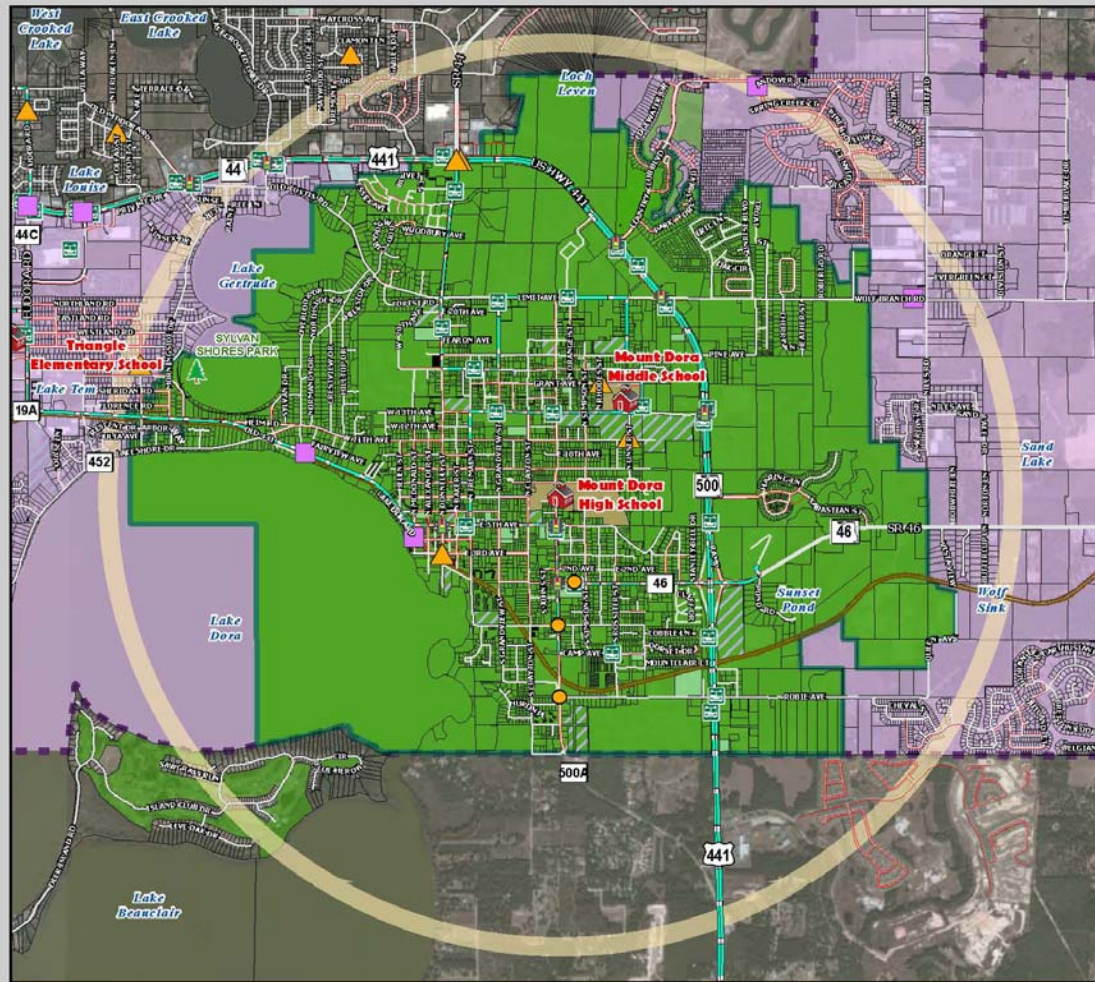
- ✓ Pedestrian bridge provided over Highland St from student parking to main campus
- ✓ Student / faculty parking access via 8<sup>th</sup> Ave
- ✓ Significant remote drop-off / pick-up on Clayton St
- ✓ Underclassman parking passes available
- ✓ Campus gates open at 7:05 AM





# Attendance and 2-Mile "Walk" Zone Map

## Mount Dora High School: Attendance and 2-Mile "Walk" Zone Map



**LEGEND**

**Schools**

- Public Schools Lake County
- 2-Mile Buffer of Mount Dora HS
- 2-Mile Walk Zone
- Special Exception Areas
- Mount Dora HS Attendance Zones (2010-2011)

**Bicycle/Pedestrian Crash Locations 01/2008 - 02/2012 (6 am - 7pm only)**

- Bicycle Involved
- Pedestrian Involved

**Property Ownership**

- Parcels
- Parks

**Transportation Network**

- Major Roads
- Local Roads
- Existing Sidewalks
- LakeXpress Bus Stop
- LakeXpress Bus Routes
- Railroads
- Traffic Signal
- Flashing Beacon

Source: FDOT, FOLE, Lake County Schools, LSUMPO, HDR

This map is intended for planning purposes only.

0 0.25 0.5 0.7 Miles

**SafeAccess**  
A SAFE SCHOOLS TRANSPORTATION STUDY

Lake-Sumter  
**MPO**

**HDR**



# Arrival and Dismissal Schedule

- 6:55 am: Students / buses start to arrive
- 7:35 am: School starts; Tardy bell rings
- 2:25 pm: All students dismissed
- 2:30 pm: Last bus departs



*Note: Students are released one hour early on Wednesdays*



## Findings:

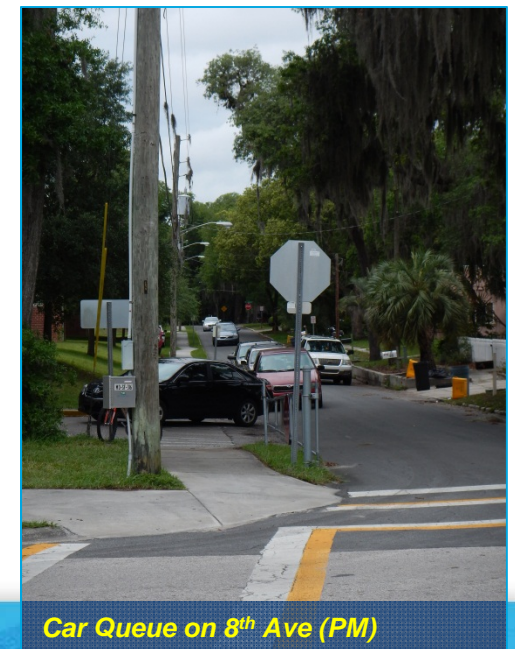
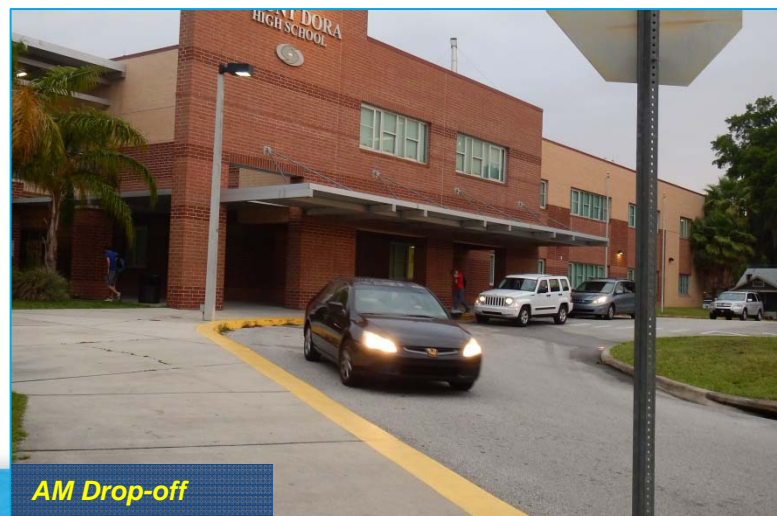
- ✓ 13 regular service buses and 2 ESE buses (15 total)
- ✓ Buses are double-stacked around loop; All 15 buses fit around loop from exit to entrance; If future buses are added, queuing on Clayton St will result
- ✓ All buses queued by dismissal
- ✓ Bus operations were observed to be well-run and efficient
- ✓ Although the Lake County Express Route stops here, there are few riders





## Findings:

- ✓ Vehicles are allowed to start arriving on campus at 7:05 AM
- ✓ Car Loop entrance is on 8<sup>th</sup> Ave, which is closed at Highland St during arrival / dismissal periods (it was open on the day of observations in the PM, but no issues were observed)
- ✓ Minor queuing was observed on 8<sup>th</sup> Ave, but since it is not a through street it was not an issue





## Findings:

- ✓ 22 remote drop-offs observed at bus loop in AM; Did not interfere with bus arrival / departure
- ✓ Parents use bus loop for remote pick-up once buses have departed
- ✓ Remote drop-off also observed at 8<sup>th</sup> Ave / Clayton St stop sign (29 observed) and at crosswalk on Highland St in front of school (8 observed), but traffic was not observed to significantly back up due in part to low posted speeds; other minor amounts of remote drop-off / pick-up on Highland St north of school and 8<sup>th</sup> Ave / Simpson St area
- ✓ No complaints made to school from neighboring residents



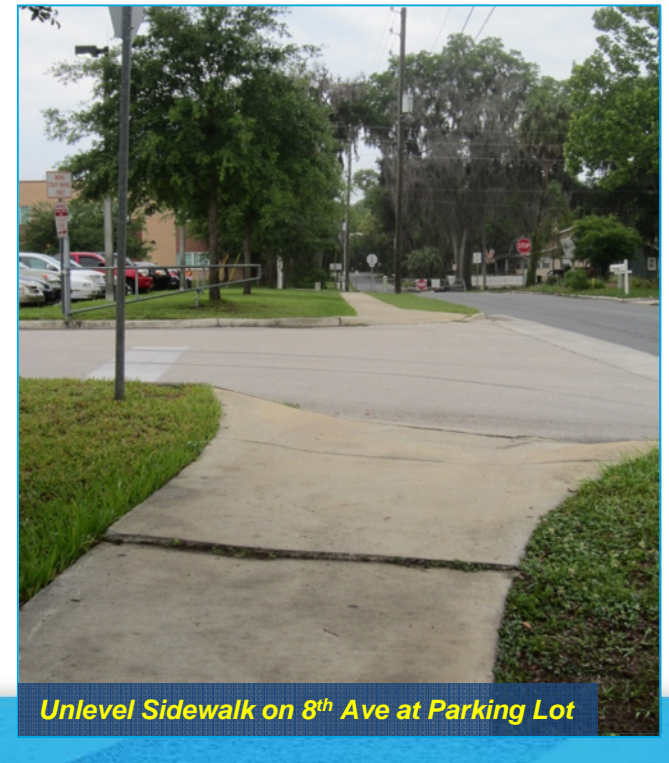


## Findings:

- ✓ Student lot is not sold out (approx. 205 passes sold); 91 are senior spaces
- ✓ Student drivers park and cross Highland St using pedestrian bridge or at marked crosswalks at 8<sup>th</sup> Ave or midblock
- ✓ Sidewalk is not level east of staff parking lot on 8<sup>th</sup> Ave (tripping hazard)

## Recommendations:

- ✓ Fix 8<sup>th</sup> Ave sidewalk







## Findings:

- ✓ 5 bicycles parked at bike rack; Approximately 150 students observed to walk to school
- ✓ School has no pedestrian safety program
- ✓ Flashing beacons (15-mph school zone) stay on all day along Highland St
- ✓ Crosswalks are missing in the immediate vicinity of school
- ✓ Several walkers observed to exit school through bus loop while buses are queued; Walkers were gone by the time buses departed
- ✓ Several sidewalk gaps existing on primary walking routes to school
- ✓ Main Highland St crossing not ADA compliant



- ✓ City has identified several sidewalk projects near school prioritized by area

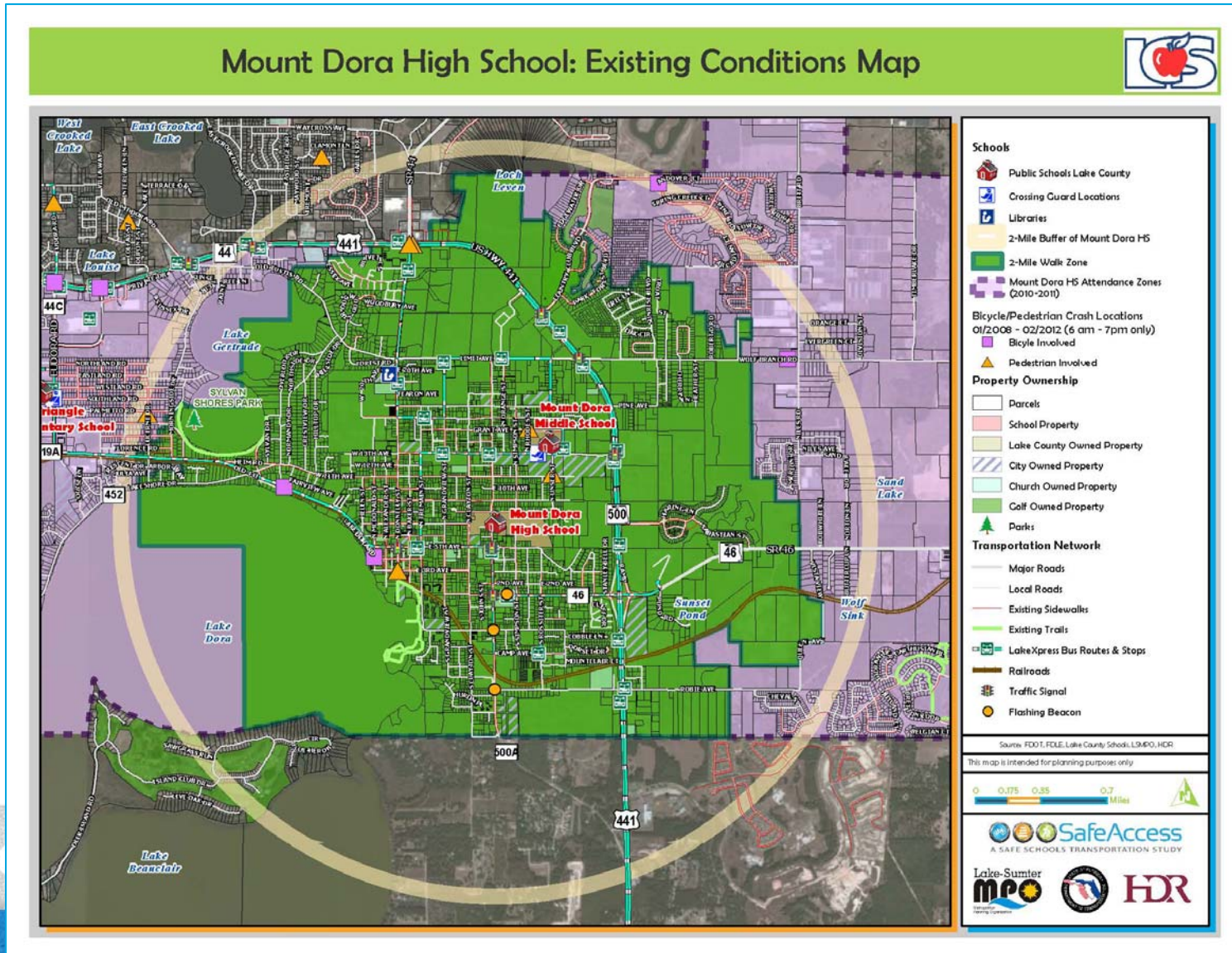


### Recommendations:

- ✓ Install crosswalks and receiving ramps on Clayton St from 7<sup>th</sup> Ave to 8<sup>th</sup> Ave
- ✓ Formalize golf cart desire path under pedestrian bridge west of Highlands St
- ✓ Install sidewalks and / or crosswalks on the following roadways (primary walking routes):
  - ✓ Highland St
  - ✓ Clayton St
  - ✓ Simpson St
  - ✓ Orange St
  - ✓ Rossiter St
  - ✓ Wardell St
  - ✓ Lincoln Ave
  - ✓ Grant Ave
  - ✓ 1<sup>st</sup> Ave
  - ✓ Camp Ave
- ✓ Crosswalks and pedestrian signage particularly important on primary walking routes at uncontrolled crossings (cross street not required to stop)
- ✓ Fix / level sidewalk on 8<sup>th</sup> Ave east of faculty parking lot and at 5<sup>th</sup> Ave east of Highland St
- ✓ Coordinate with City to construct priority sidewalk projects



## Mount Dora High School

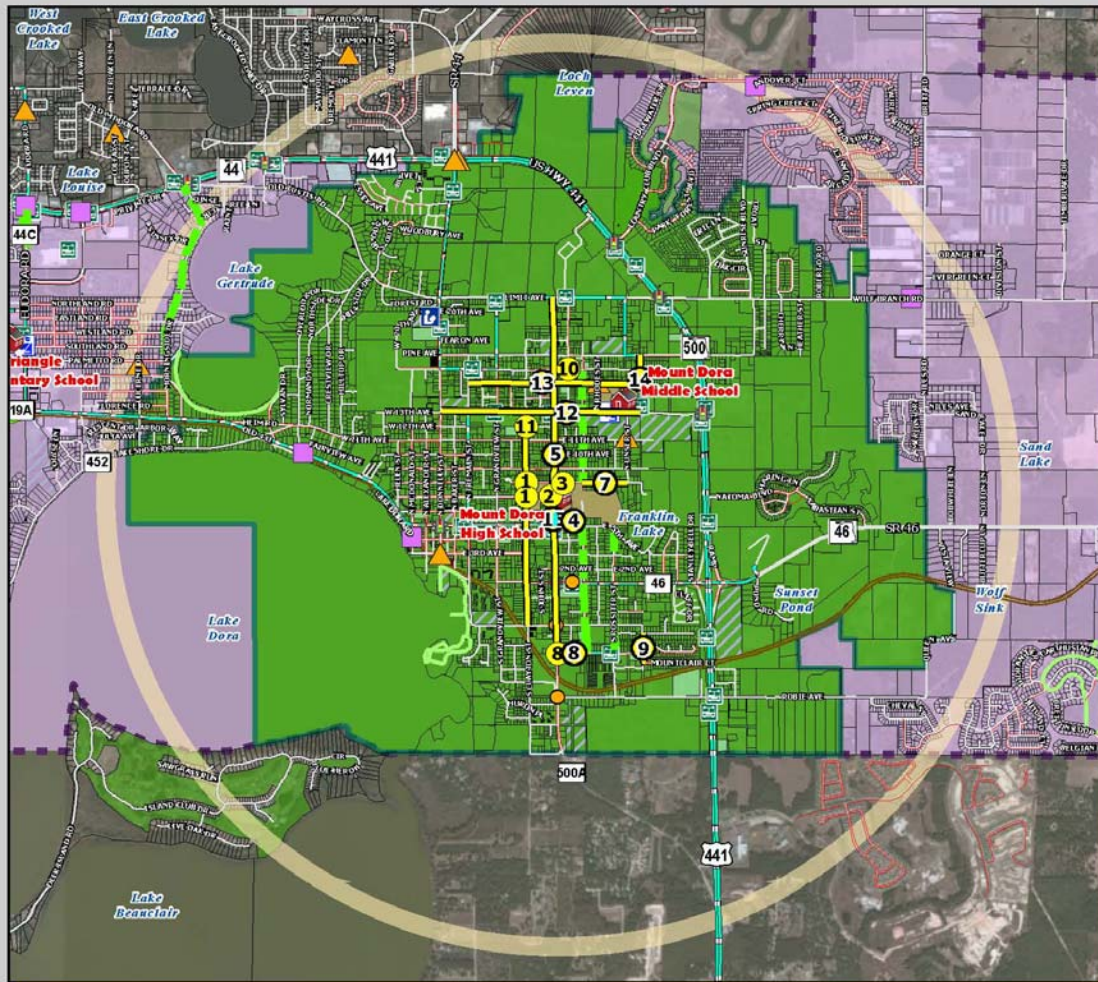




## Findings:

- ✓ On June 24, 2013 the Lake County School Board voted to formally discontinue all courtesy busing for elementary and middle school students who live within 2-mile walk zone of the school
  - This did not change the walk zone for Mt. Dora High School
- ✓ The Board is also considering combining middle and high school students on the same bus for the 2014-2015 school year.
  - This would involve moving middle school start times earlier from their existing 9:05 to 9:15 time frame to the proposed 7:35
  - This would also cause the elementary schools to be moved back almost 25 minutes to start around 8:55 in the morning

## Mount Dora High School: Transportation Access Master Plan



- Schools**
- Public Schools Lake County
  - Crossing Guard Locations
  - Libraries
  - 2-Mile Buffer of Mount Dora HS
  - 2-Mile Walk Zone
  - Special Exception Areas
  - Mount Dora HS Attendance Zones (2010-2011)
- 01/2008 - 07/2011 Bicycle/Pedestrian Crash Locations (School Pickup/Dropoff Times)**
- Bicycle Involved
  - Pedestrian Involved
- Property Ownership**
- Parcels
  - School Property
  - Lake County Owned Property
  - City Owned Property
  - Church Owned Property
  - Golf Owned Property
  - Parks
- Transportation Network**
- Major Roads
  - Local Roads
  - Existing Sidewalks
  - Existing Trails
- Identified Improvement Projects**
- Priority Projects (by Project ID)
  - Recommended Projects

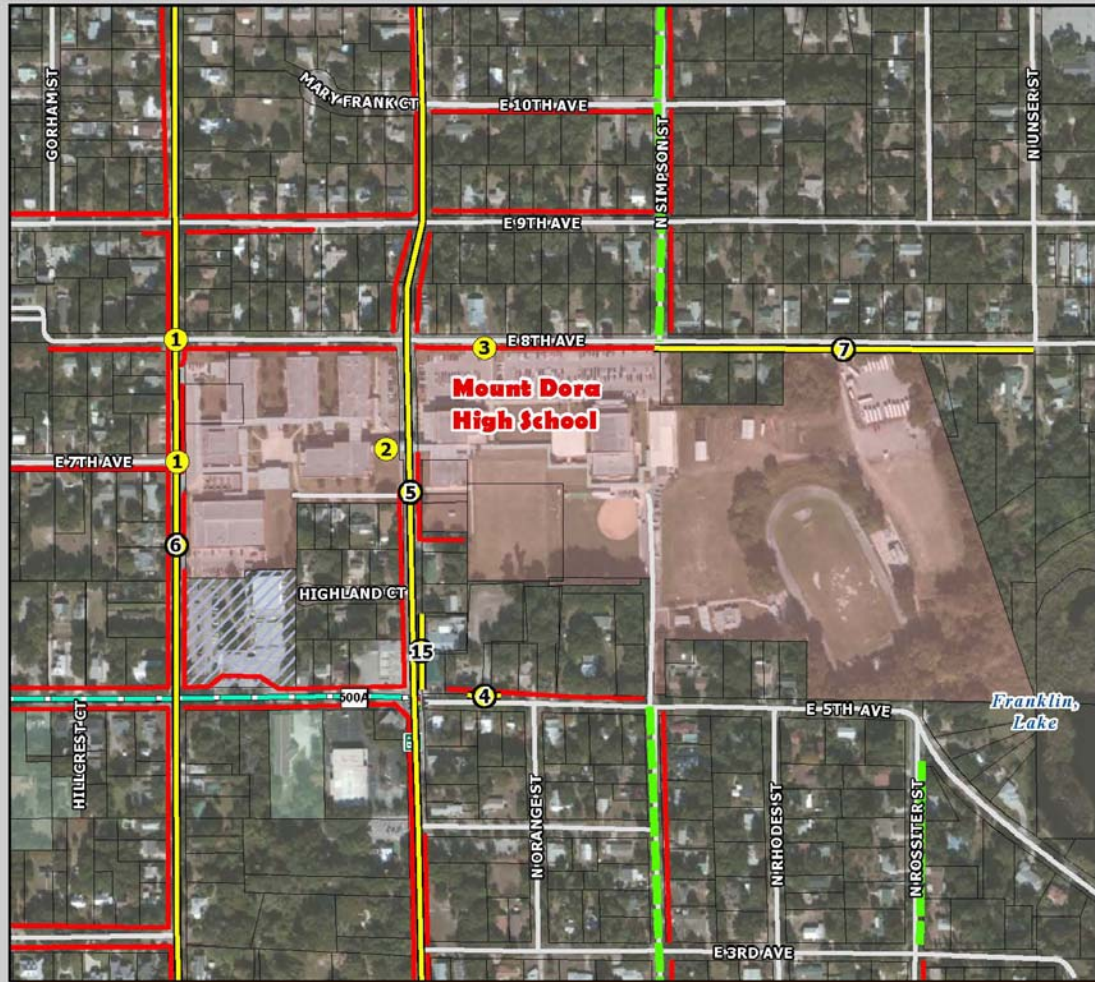
Source: FDOT, FDLE, Lake County Schools, LCMPO, HDR

This map is intended for planning purposes only.





## Mount Dora High School: Priority Projects



**LEGEND**

**Schools**

- Public Schools Lake County

**Identified Improvement Projects**

- Priority Projects (by Project ID)
- Recommended Projects

**Property Ownership**

- Parcels
- School Property
- Lake County Owned Property
- City Owned Property
- Church Owned Property
- Golf Owned Property
- Parks

**Transportation Network**

- Major Roads
- Local Roads
- Existing Sidewalks
- LakeXpress Bus Stop
- LakeXpress Bus Routes
- Railroads
- Traffic Signal
- Flashing Beacon
- Crossing Guard Location

Source: FDOT, FOLE, Lake County Schools, L3-MPO, HDR

This map is intended for planning purposes only.

0 0.02 0.04 0.08 Miles

**SafeAccess**  
A SAFE SCHOOLS TRANSPORTATION STUDY

Lake-Sumter  
**mco**

**HDR**

Map Date: August 2011



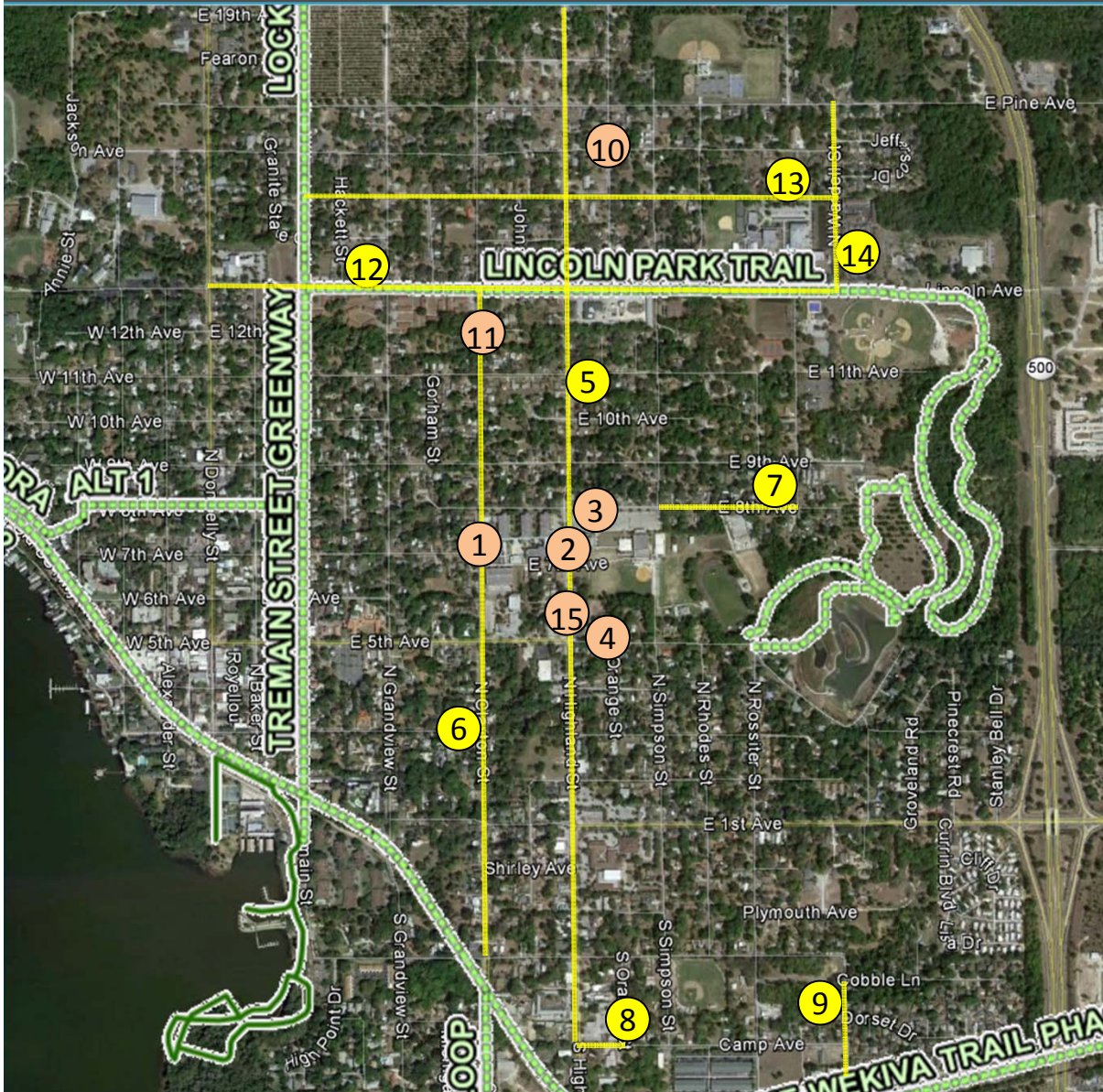


# SafeAccess

A SAFE SCHOOLS TRANSPORTATION STUDY

## Mount Dora High School

# Recommended Priority Projects



### Recommendations:

1. Clayton St crosswalks
2. Pave access under pedestrian bridge
3. 8<sup>th</sup> Ave sidewalk maintenance
4. 5<sup>th</sup> Ave sidewalk maintenance
5. Highland St crosswalks
6. Clayton St crosswalks
7. 8<sup>th</sup> Ave sidewalk
8. Camp Ave sidewalk
9. Wardell St sidewalk
10. Orange St sidewalk / crosswalks
11. Clayton St curb ramp
12. Lincoln Ave crosswalks
13. Grant Ave crosswalks
14. Wardell St sidewalk / crosswalks
15. Jeremiah's sidewalk



Slide 16

---

jm2

what is difference between orange/tan color numbers and yellow numbers. Add to legend?

jmclash, 8/12/2013

# Recommended Project List

Project Number	Roadway	Location	Project
1	Clayton St	7 <sup>th</sup> Ave to 8 <sup>th</sup> Ave	Install crosswalks and receiving ramps
2	Highland St Pedestrian Bridge	West of Highland St	Pave access under pedestrian bridge
3	8 <sup>th</sup> Ave	East of Faculty Parking Lot	Fix / level sidewalk (maintenance)
4	5 <sup>th</sup> Ave	East of Highland St	Fix / level sidewalk (maintenance)
5	Highland St	Camp Ave to Limit Ave	Install crosswalks at all cross streets
6	Clayton St	Liberty Ave to Lincoln Ave	Install crosswalks at all cross streets
7	8 <sup>th</sup> Ave	Simpson St to Unser St	Construct sidewalk on south side; mark crosswalk at student parking lot driveway
8	Camp Ave	Orange St to Highland St	Construct sidewalk on south side



# Recommended Project List

Project Number	Roadway	Location	Project
9	Wardell St	Cobble Lane to Mountclair Court	Construct sidewalk on east side
10*	Orange St	At Jackson Ave	Fill sidewalk gap; install crosswalks
11	Clayton St	At 12 <sup>th</sup> Ave	Install curb ramp on southeast corner
12	Lincoln Ave	Wardell St to Donnelly St	Install traffic calming; fill sidewalk gap on south side between Grandview St and Highland St, and small gap on north side at Johns St; install crosswalks on all cross streets
13	Grant Ave	Wardell St to Tremain St	Install crosswalks on all cross streets on south side
14*	Wardell St	Lincoln Ave to Pine Ave	Install crosswalks on all cross streets; close sidewalk gap (east side) from south of Jefferson Dr to apartment driveway south of Grant Ave
15	Highland St	Jeremiah's	Swap restaurant parking / outdoor dining; Install sidewalk along Highland St (east side)

\*also a priority for Mt. Dora Middle School, all sidewalk / crosswalk projects will benefit both schools



A SAFE SCHOOLS TRANSPORTATION STUDY

Mount Dora High School

# Recommended Project #1

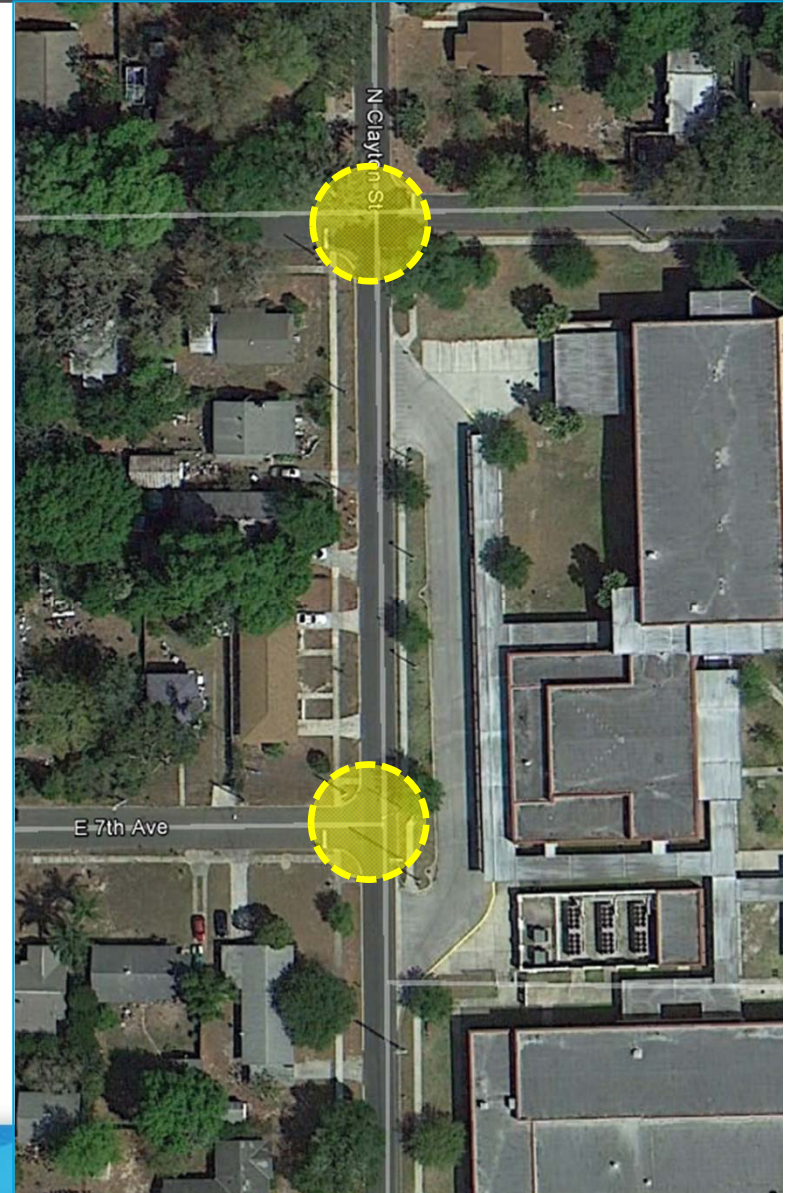
Install Crosswalks / Ramps on Clayton Street

## Findings:

- ✓ Several students observed to cross Clayton St near the bus ramps as walkers or remote pick-up / drop-offs
- ✓ No pedestrian features at the nearby intersections / cross streets

## Recommendations:

- ✓ Install crosswalks and receiving ramps on Clayton St at the intersections of 7<sup>th</sup> Ave and 8<sup>th</sup> Ave







A SAFE SCHOOLS TRANSPORTATION STUDY

Mount Dora High School

# Recommended Project #2

Pave Access Under Pedestrian Bridge

## Findings:

- ✓ Defined tire tracks visible under pedestrian bridge on west side of Highlands St (also used as access to bicycle racks)

## Recommendations:

- ✓ Formalize access with pavement or pavers along desired line to school bicycle parking





A SAFE SCHOOLS TRANSPORTATION STUDY

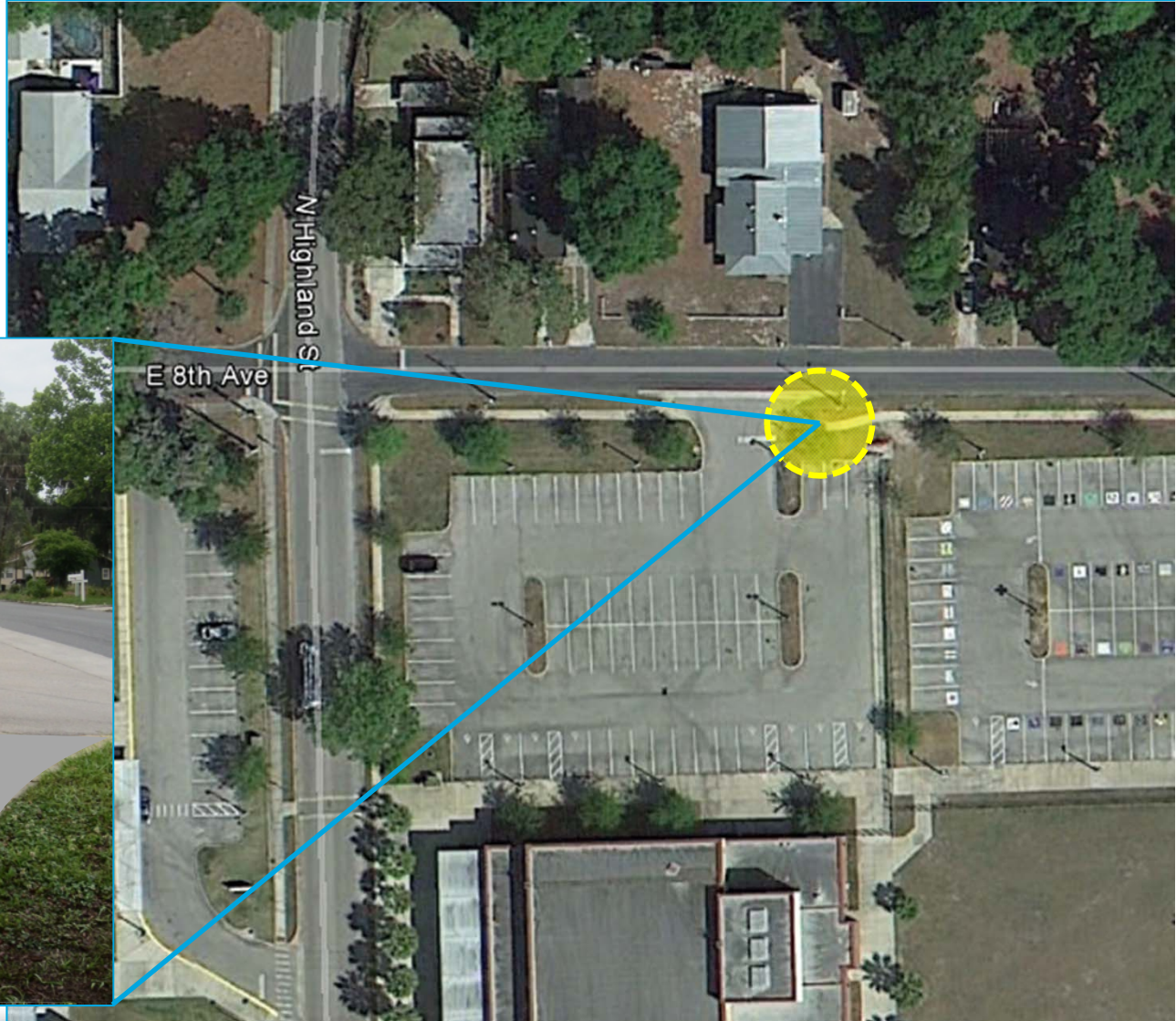
Mount Dora High School

# Recommended Project #3

Sidewalk Maintenance on 8<sup>th</sup> Avenue

## Recommendations:

- ✓ Fix / level sidewalk on 8<sup>th</sup> Ave east of faculty parking lot





# Recommended Project #4

## Sidewalk Maintenance on 5<sup>th</sup> Avenue

### Recommendations:

- ✓ Fix / level sidewalk on 5<sup>th</sup> Ave east of Highland St – two locations near Jeremiah's driveways





jm4



jm5 A SAFE SCHOOLS TRANSPORTATION STUDY

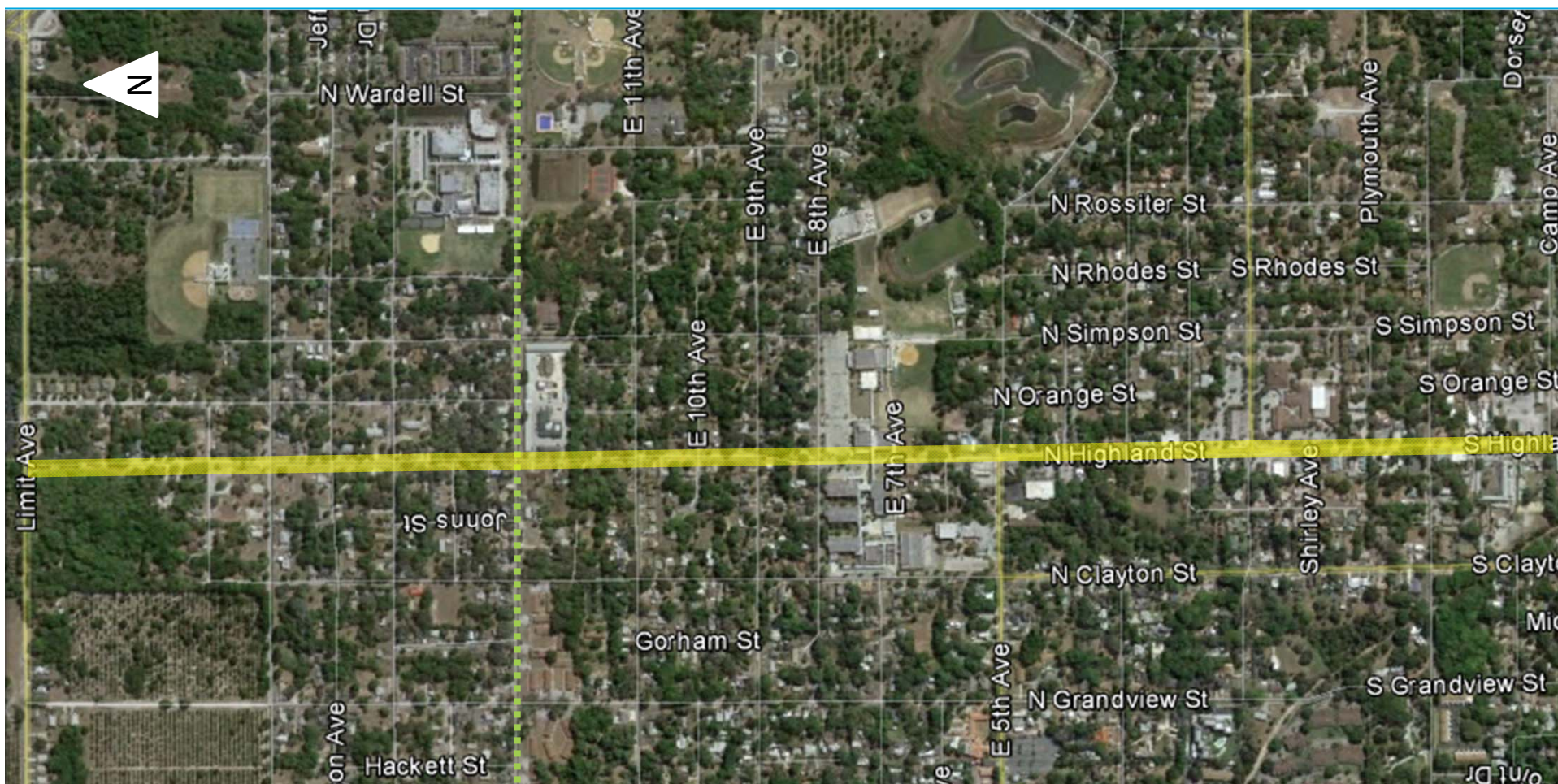
Mount Dora High School

# Recommended Project #5

## Install Crosswalks on Highland Street

### Recommendations:

- ✓ Install crosswalks on all cross streets from Camp Ave to Limit Ave





## Slide 23

---

**jm4**

Show these on the map with dot at each location. Difficult to know how many locations or where the crosswalks are at this scale.

jmclash, 8/12/2013

**jm5**

The next location add to include detectable mats on receiving ramps. Should these be added for Highland Street locations as well?

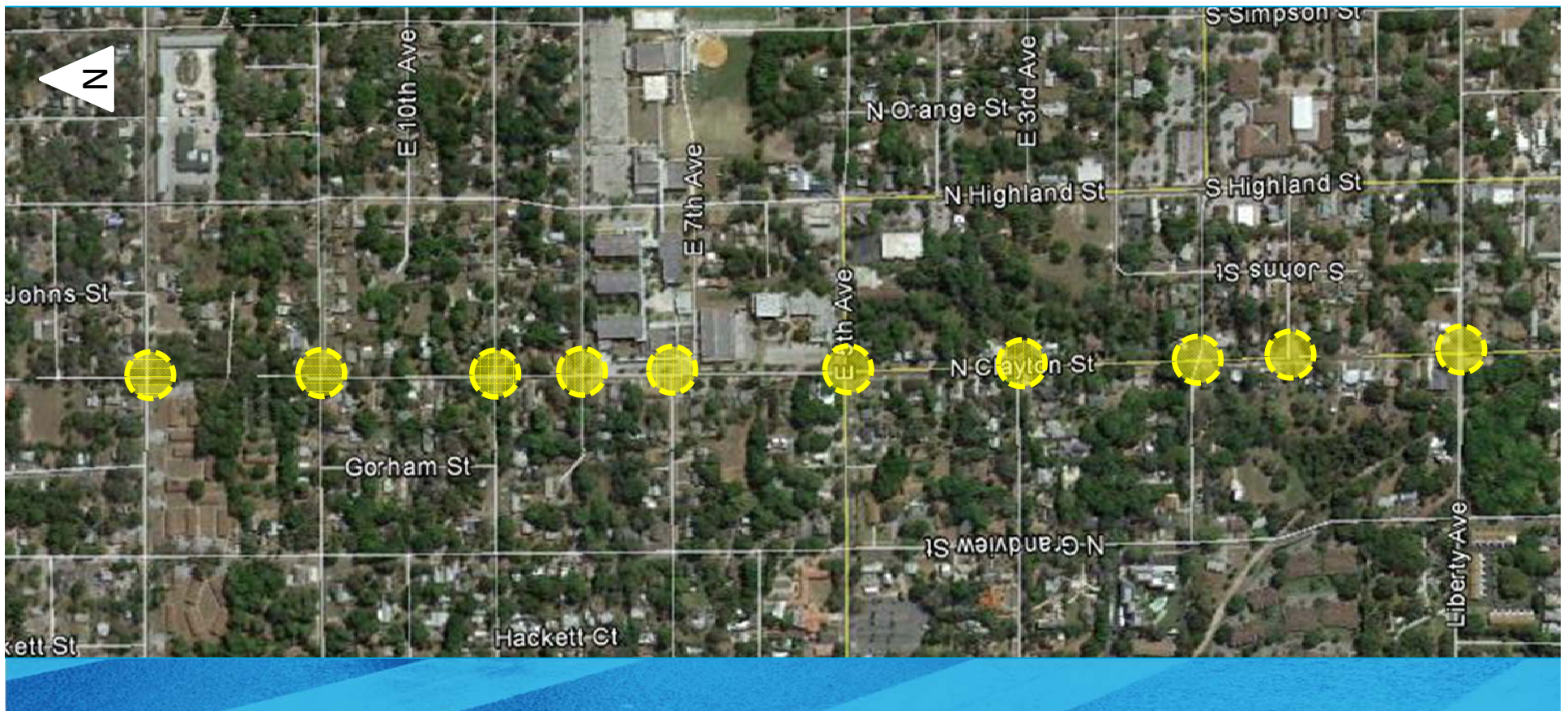
jmclash, 8/12/2013

# Recommended Project #6

Install Crosswalks on Clayton St

## Recommendations:

- ✓ Add crosswalks on all cross streets from Liberty Ave to Lincoln Ave
- ✓ Install receiving ramps / detectable warning mats if missing





# Recommended Project #7

## New Sidewalk on 8<sup>th</sup> Ave

### Findings:

- ✓ The existing sidewalk on the south side of 8<sup>th</sup> Ave ends at the east edge of the underclassman parking lot
- ✓ Several students were observed walking along 8<sup>th</sup> Ave east of the current sidewalk terminus to get to and from school
- ✓ 8<sup>th</sup> Ave is narrow and has student vehicle and bus traffic, so students walking in the street is a safety concern



### Recommendations:

- ✓ Construct new sidewalk on south side of 8<sup>th</sup> Ave from Simpson St to Unser St
- ✓ Mark crosswalk at student parking lot





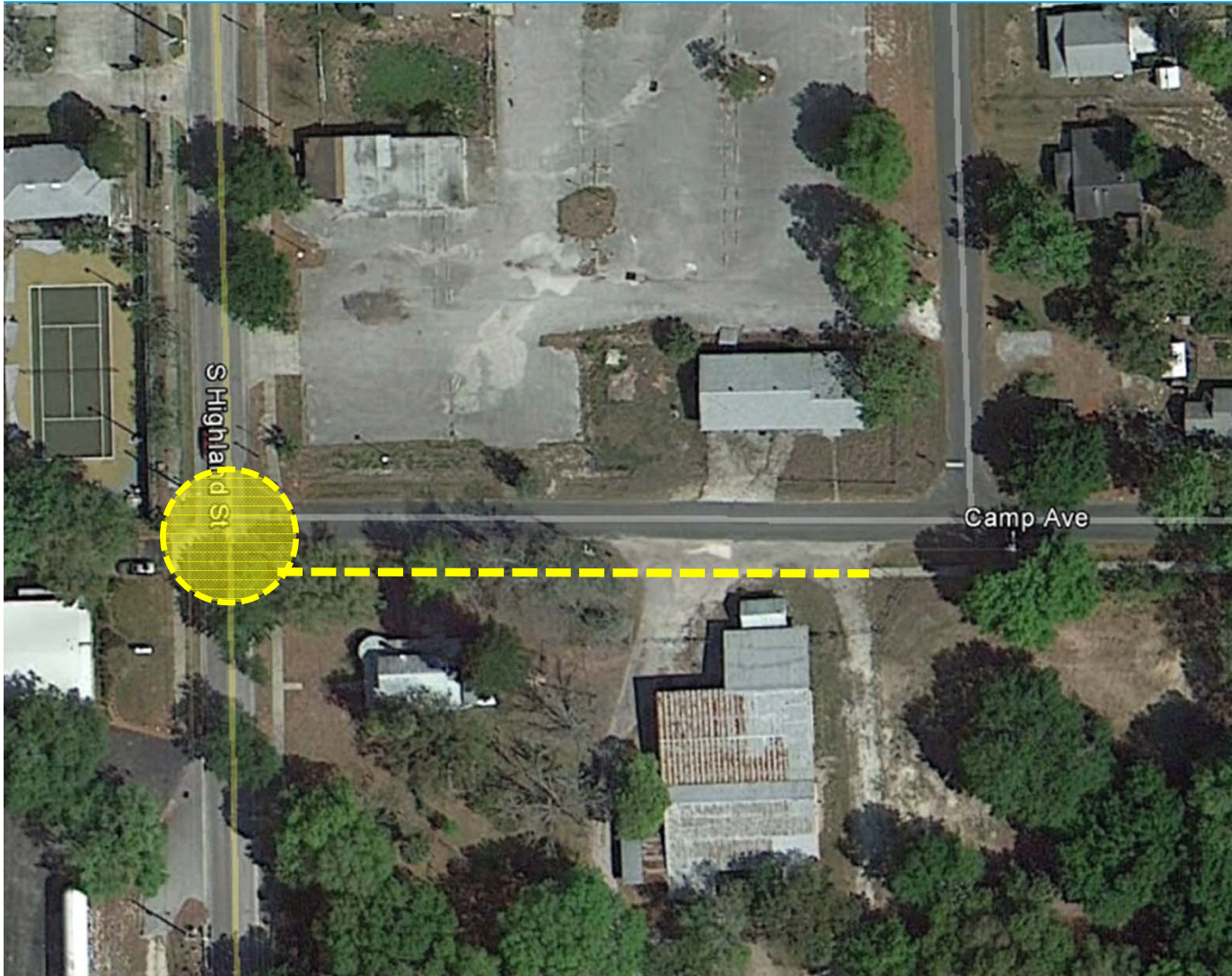


A SAFE SCHOOLS TRANSPORTATION STUDY

Mount Dora High School

# Recommended Project #8

New Sidewalk on Camp Avenue



## Recommendations:

- ✓ Construct new sidewalk on south side from Orange St to Highland St; Add crosswalks



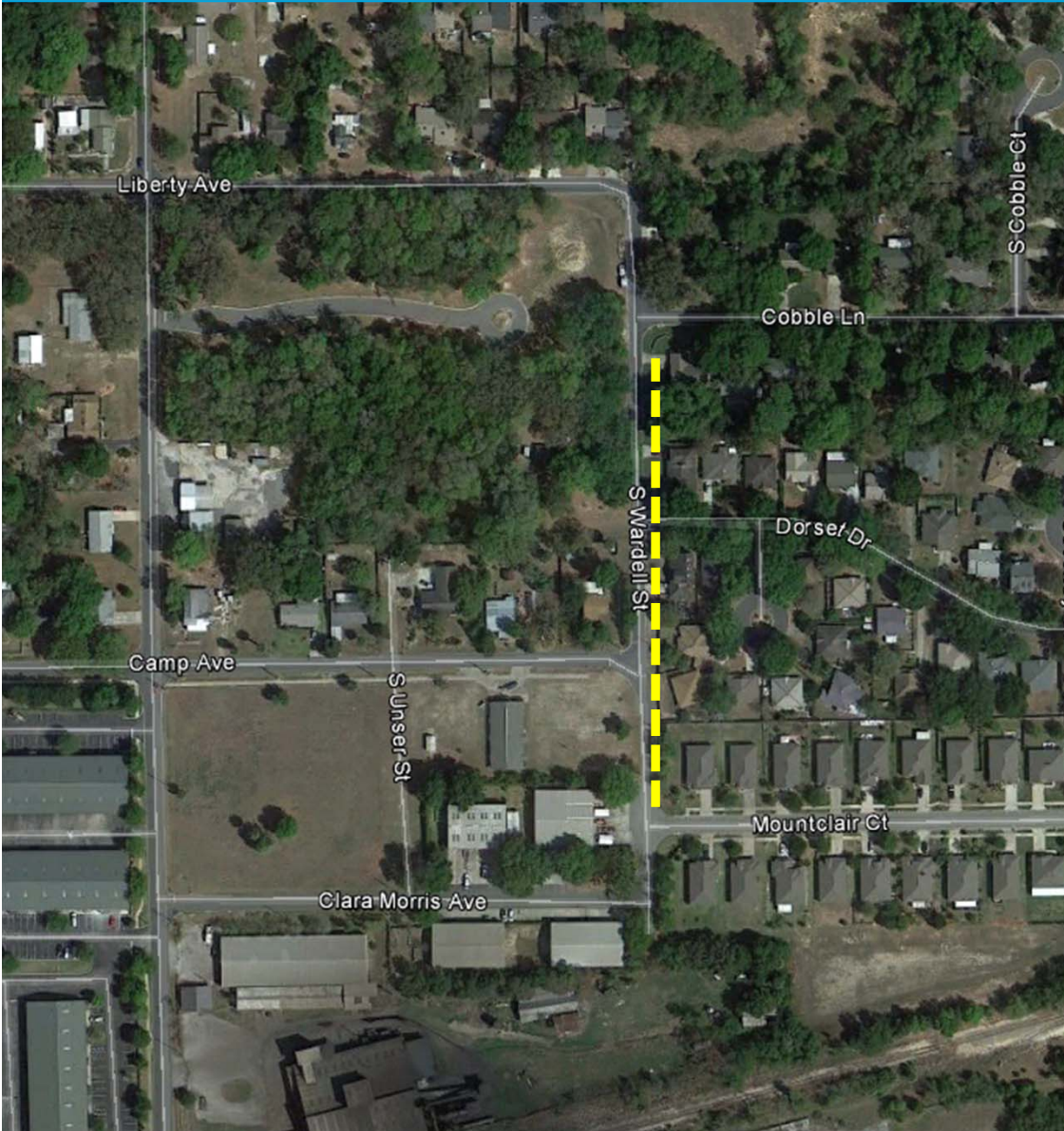


A SAFE SCHOOLS TRANSPORTATION STUDY

## Mount Dora High School

# Recommended Project #9

## New Sidewalk on Wardell St



### Recommendations:

- ✓ Construct new sidewalk on east side from Cobble Ln to Mountclair Ct
- ✓ Connect to sidewalks on Dorset Dr, Mountclair Ct and Camp Ave

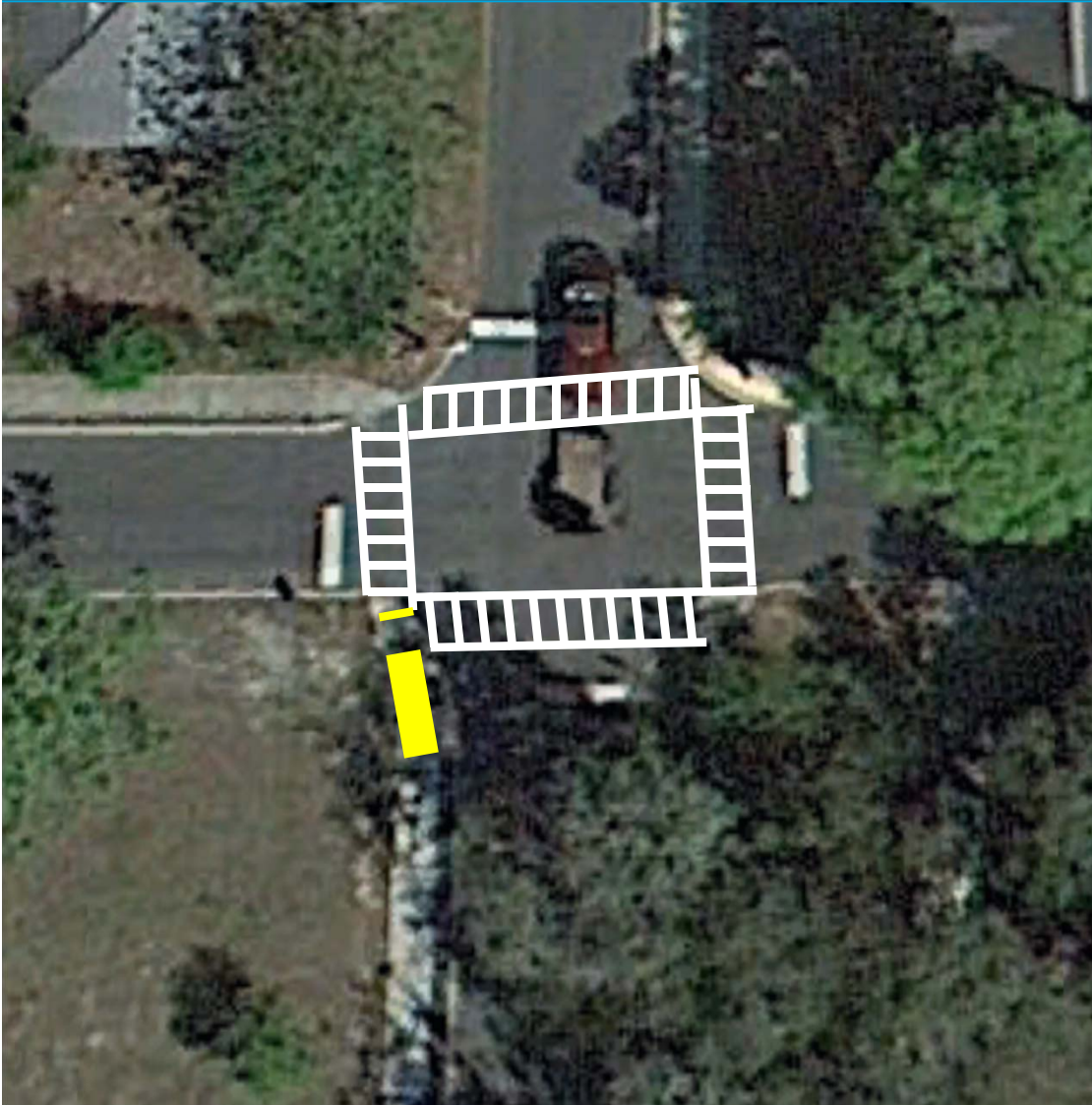


A SAFE SCHOOLS TRANSPORTATION STUDY

Mount Dora High School

# Recommended Project #10

Close Sidewalk Gap on Orange St



## Recommendations:

- ✓ Close sidewalk gap on Orange St at Jackson Ave
- ✓ Install high-visibility crosswalks on all approaches

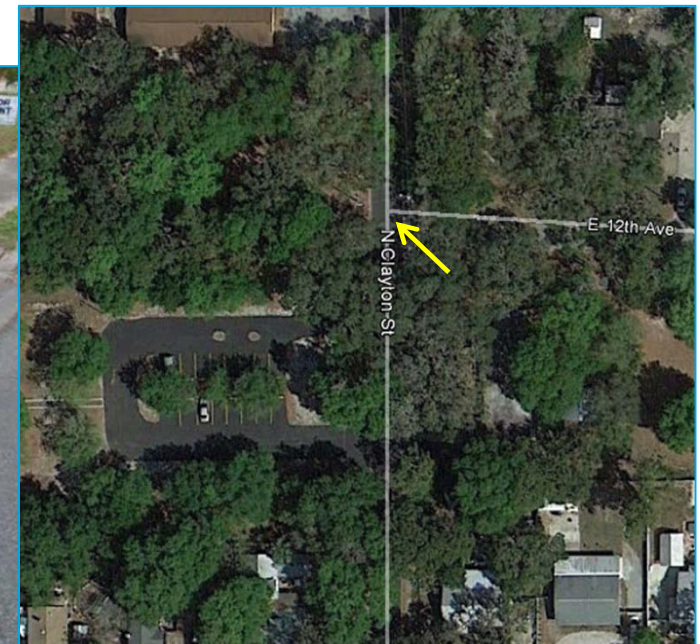


# Recommended Project #11

## Install Missing Curb Ramp on Clayton Street

### Recommendations:

- ✓ Install missing curb ramp on southeast and northeast corners of Clayton St at 12<sup>th</sup> Ave
- ✓ Install ADA detectable warning mat





# Recommended Project #12

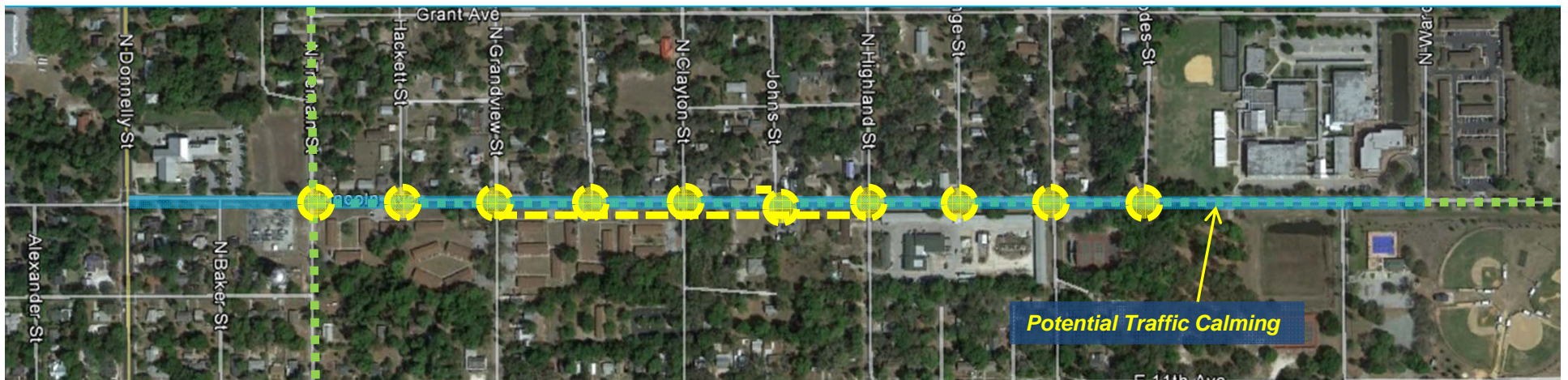
## Lincoln Ave Traffic Calming/Sidewalk Gaps/Crosswalks

### Findings:

- ✓ Sidewalks on Lincoln Ave are minimum width only and located immediately adjacent to the roadside, with no curbing; Although not a priority for the high school, it would be noted that the middle school report includes a recommendation for traffic calming along this portion of Lincoln Ave
- ✓ Sidewalk gaps on south side between Grandview St & Highland St, & on the north side at Johns St
- ✓ Crosswalks are missing at most cross streets along this primary walking route

### Recommendations:

- ✓ Install traffic calming measures on Lincoln Ave from Wardell St to Donnelly St to keep vehicle speeds low on this primary walking route to the school
- ✓ Install high-visibility ladder style crosswalks and sidewalk ramps on all cross streets where none exist







A SAFE SCHOOLS TRANSPORTATION STUDY

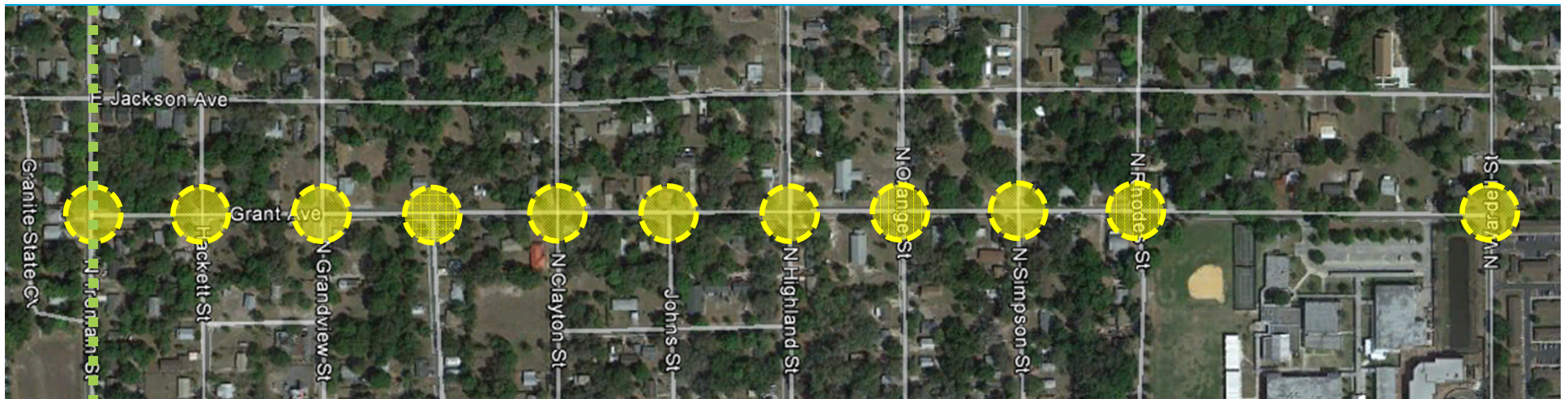
Mount Dora High School

# Recommended Project #13

## Install Crosswalks on Grant Avenue

### Recommendations:

- ✓ Install high-visibility ladder style crosswalks and sidewalk ramps on all cross streets where none exist from Wardell St to Tremain St
- ✓ Install receiving ramps / detectable warning mats if missing

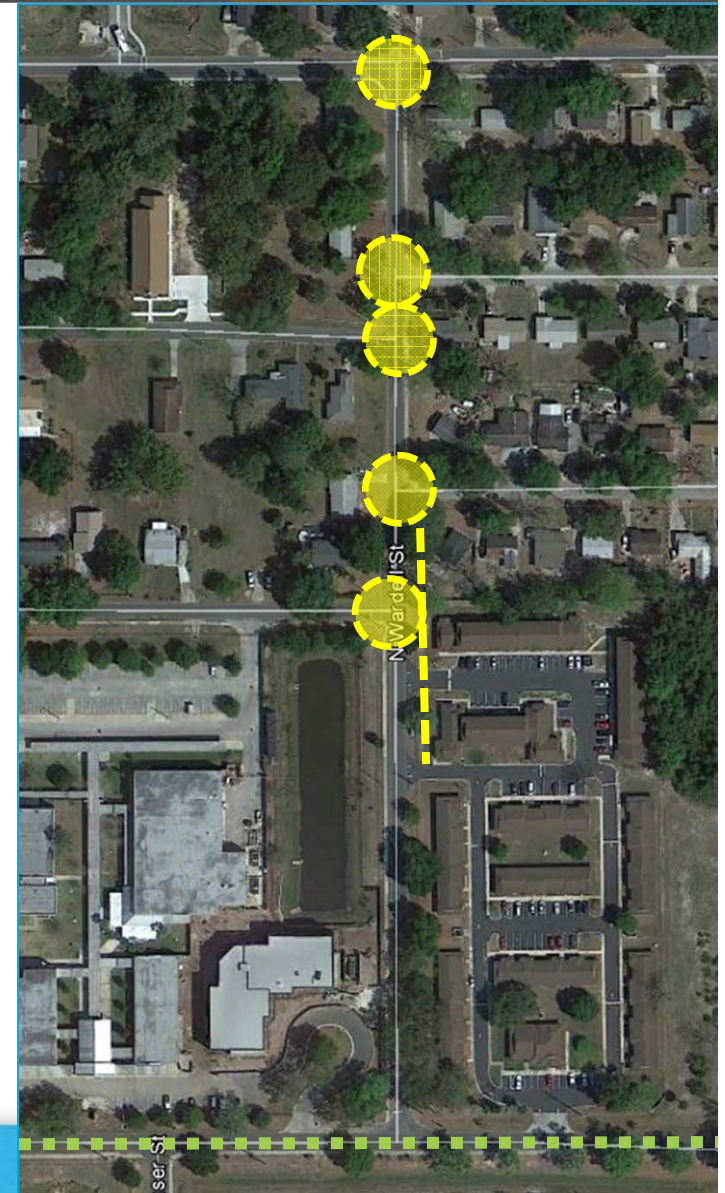


# Recommended Project #14

## Install Crosswalks on Wardell Street

### Recommendations:

- ✓ Install high-visibility ladder style crosswalks and sidewalk ramps on all cross streets where none exist, Install receiving ramps / detectable warning mats if missing
- ✓ Construct missing sidewalk section on east side from south of Jefferson Dr to Apartment driveway south of Grant Ave







A SAFE SCHOOLS TRANSPORTATION STUDY

## Mount Dora High School

# Recommended Project #15

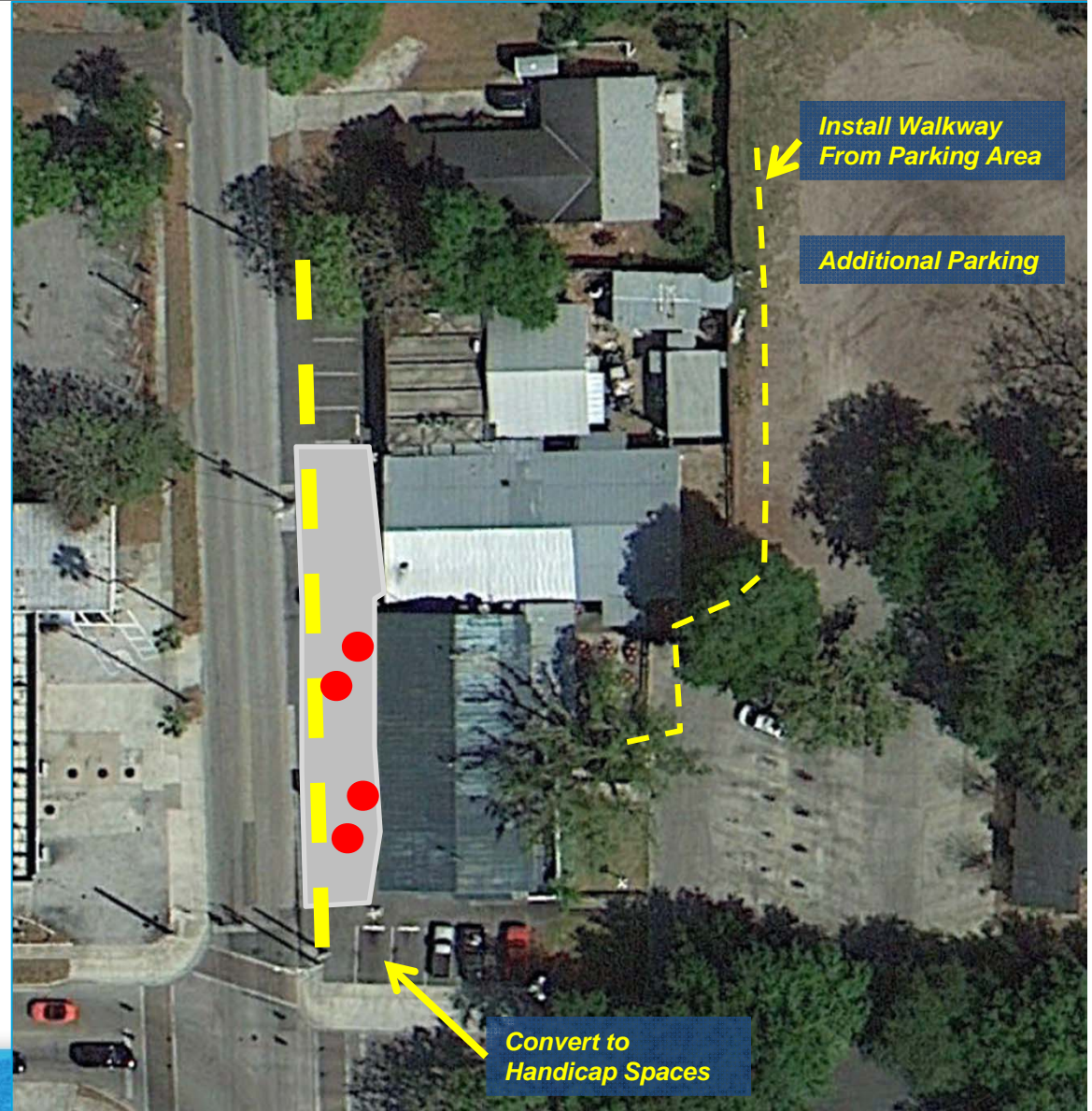
## Install Sidewalk on Highlands Street at Jeremiah's

### Findings:

- ✓ Restaurant parking located directly on Highlands

### Recommendations:

- ✓ Restripe spaces on 8<sup>th</sup> Ave for handicap spaces, add additional parking in rear (dirt lot – overflow parking)
- ✓ Provide parallel handicap parking with striped out path for restaurant access
- ✓ Install sidewalk along Highlands St in front of Jeremiah's
- ✓ Allow outdoor seating in this area.



Priority #	Item	Quantity	Units	Total
1	Crosswalk	110	ft	\$250.00
1	Ramps	3	Ramps	\$1,710.00
1	Detector Mats	3	Mats	\$1,050.00
2	Sidewalk	75	ft	\$27,600.00
5	Crosswalk	910	ft	\$2,030.00
6	Crosswalk	455	ft	\$1,020.00
6	Detector Mats	18	Mats	\$6,300.00
7	Sidewalk	1,315	ft	\$125,800.00
7	Crosswalk	30	ft	\$70.00
8	Sidewalk	265	ft	\$42,500.00
8	Crosswalk	46	ft	\$100.00
9	Sidewalk	630	ft	\$71,600.00

### ESTIMATE BASIS AND ASSUMPTIONS:

- Costs are in 2012 dollars
- Sidewalk estimates based on estimating tool developed for Phase 1, Estimates for all other improvements based on Unit Costs per FDOT Lake County (Area 7) averages (07/2011 - 06/2012).
- Estimate does not include design costs, CEI costs, or utility relocation costs, utility relocation assumed by others.
- The mobilization costs are based on 15% of the construction cost and estimates include maintenance of traffic costs (15% of construction costs).
- Regular excavation & embankment to 1 ft depth is assumed
- No R/W costs included
- No specialized landscaping (beyond sodding) is included.
- Sidewalk is assumed to be 5 feet wide, unit given is in linear feet.



Priority #	Item	Quantity	Units	Total
10	Sidewalk	15	ft	\$22,800.00
10	Crosswalk	130	ft	\$290.00
11	Ramp	2	Ramps	\$1,140.00
11	Detector Mats	2	Mats	\$700.00
12	Crosswalk	625	ft	\$1,400.00
12	Detector Mats	30	Mats	\$10,500.00
12	Sidewalk	1,300	ft	\$124,900.00
13	Crosswalk	395	ft	\$880.00
13	Detector Mats	24	Mats	\$8,400.00
14	Sidewalk	210	ft	\$49,100.00
14	Crosswalk	115	ft	\$260.00
14	Ramps	2	Ramps	\$1,140.00
14	Detector Mats	8	Mats	\$2,800.00

### ESTIMATE BASIS AND ASSUMPTIONS:

- Costs are in 2012 dollars
- Sidewalk estimates based on estimating tool developed for Phase 1, Estimates for all other improvements based on Unit Costs per FDOT Lake County (Area 7) averages (07/2011 - 06/2012).
- Estimate does not include design costs, CEI costs, or utility relocation costs, utility relocation assumed by others.
- The mobilization costs are based on 15% of the construction cost and estimates include maintenance of traffic costs (15% of construction costs).
- Regular excavation & embankment to 1 ft depth is assumed
- No R/W costs included
- No specialized landscaping (beyond sodding) is included.
- Sidewalk is assumed to be 5 feet wide, unit given is in linear feet

Project Number	Roadway	Location	Project
2	Simpson St	Camp Ave to Liberty Ave	Construct sidewalk on east side
3	Simpson St	Liberty Ave to 5 <sup>th</sup> Ave	Install crosswalks along cross streets
4	Simpson St	8 <sup>th</sup> Ave to Jackson Ave	Install crosswalks along cross streets
5	Rossiter St	Camp Ave to 5 <sup>th</sup> Ave	Construct sidewalk on east side
6	10 <sup>th</sup> Ave	Alexander St to Tremain St	Construct new sidewalk (City Priority A)
7	3 <sup>rd</sup> Ave	Alexander St to McDonald St	Construct new sidewalk (City Priority A)
8	6 <sup>th</sup> Ave	Tremain St to Baker St	Construct new sidewalk (City Priority A)
9	6 <sup>th</sup> Ave	Helen St to McDonald St	Construct new sidewalk (City Priority A)



Project Number	Roadway	Location	Project
10	Baker St	3 <sup>rd</sup> Ave to Railroad	Construct new sidewalk (City Priority A)
11	Baker St	8 <sup>th</sup> Ave to 7 <sup>th</sup> Ave	Construct new sidewalk (City Priority A)
12	Helen St	11 <sup>th</sup> Ave to 10 <sup>th</sup> Ave	Construct new sidewalk (City Priority A)
13	Helen St	8 <sup>th</sup> Ave to 6 <sup>th</sup> Ave	Construct new sidewalk (City Priority A)
14	Tremain St	5 <sup>th</sup> Ave to 4 <sup>th</sup> Ave	Construct new sidewalk (City Priority A)
15	3 <sup>rd</sup> Ave	Rossiter St to Highland St	Construct new sidewalk (City Priority B)
16	4 <sup>th</sup> Ave	Simpson St to Orange St	Construct new sidewalk (City Priority B)
17	5 <sup>th</sup> Ave	Rossiter St to Simpson St	Construct new sidewalk (City Priority B)
18	8 <sup>th</sup> Ave	Unser St to Simpson St	Construct new sidewalk (City Priority B) – moved to Priority Project #7
19	9 <sup>th</sup> Ave	Unser St to Simpson St	Construct new sidewalk (City Priority B)

Project Number	Roadway	Location	Project
20	Orange St	3 <sup>rd</sup> Ave to 5 <sup>th</sup> Ave	Construct new sidewalk (City Priority B)
21	Rhodes St	1 <sup>st</sup> Ave to 5 <sup>th</sup> Ave	Construct new sidewalk (City Priority B)
22	Rossiter St	1 <sup>st</sup> Ave to 5 <sup>th</sup> Ave	Construct new sidewalk (City Priority B)
23	Rossiter St	9 <sup>th</sup> Ave to 11 <sup>th</sup> Ave	Construct new sidewalk (City Priority B)
24	Summit Ave	Lk Franklin Dr to Rossiter St	Construct new sidewalk (City Priority B)
25	11 <sup>th</sup> Ave / Heim Rd	Overlook Dr to McDonald St	Construct new sidewalk (City Priority C)
26	Crestview Dr	11 <sup>th</sup> Ave to Northside Dr	Construct new sidewalk (City Priority C)
27	Hillside Dr	Hilltop Dr to Old Eustis Rd	Construct new sidewalk (City Priority C)
28	Hilltop Dr	11 <sup>th</sup> Ave to Normandy Dr	Construct new sidewalk (City Priority C)



Project Number	Roadway	Location	Project
29	Normandy Dr	11 <sup>th</sup> Ave to Overlook Dr	Construct new sidewalk (City Priority C)
30	Northside Dr	Normandy Dr to end	Construct new sidewalk (City Priority C)
31	Overlook Dr	11 <sup>th</sup> Ave to Old Eustis Rd	Construct new sidewalk (City Priority C)
32	1 <sup>st</sup> Ave	Clayton St to Highland St	Construct new sidewalk (City Priority D)
33	2 <sup>nd</sup> Ave	Rossiter St to Highland St	Construct new sidewalk (City Priority D)
34	2 <sup>nd</sup> Ave	Johns St to Highland St	Construct new sidewalk (City Priority D)
35	Camp Ave	Orange St to Highland St	Construct new sidewalk (City Priority D)
36	Clara Morris Ave	Wardell St to Rossiter St	Construct new sidewalk (City Priority D)
37	Cobble Ln	Wardell St to end	Construct new sidewalk (City Priority D)

Project Number	Roadway	Location	Project
38	Grandview St	Johns Ave to Liberty Ave	Construct new sidewalk (City Priority D)
39	Johns St	2 <sup>nd</sup> Ave to Shirley Ave	Construct new sidewalk (City Priority D)
40	Johns Ave	Clayton St to Grandview St	Construct new sidewalk (City Priority D)
41	Lakeview Ave	Highland St to Clayton St	Construct new sidewalk (City Priority D)
42	Liberty Ave	Wardell St to Highland St	Construct new sidewalk (City Priority D)
43	Lk Franklin Dr	1 <sup>st</sup> Ave to Summit Ave	Construct new sidewalk (City Priority D)
44	Michigan St	Johns Ave to Oak Ave	Construct new sidewalk (City Priority D)
45	Oak Ave	Clayton St to Grandview St	Construct new sidewalk (City Priority D)
46	Orange St	Camp Ave to Liberty Ave	Construct new sidewalk (City Priority D)



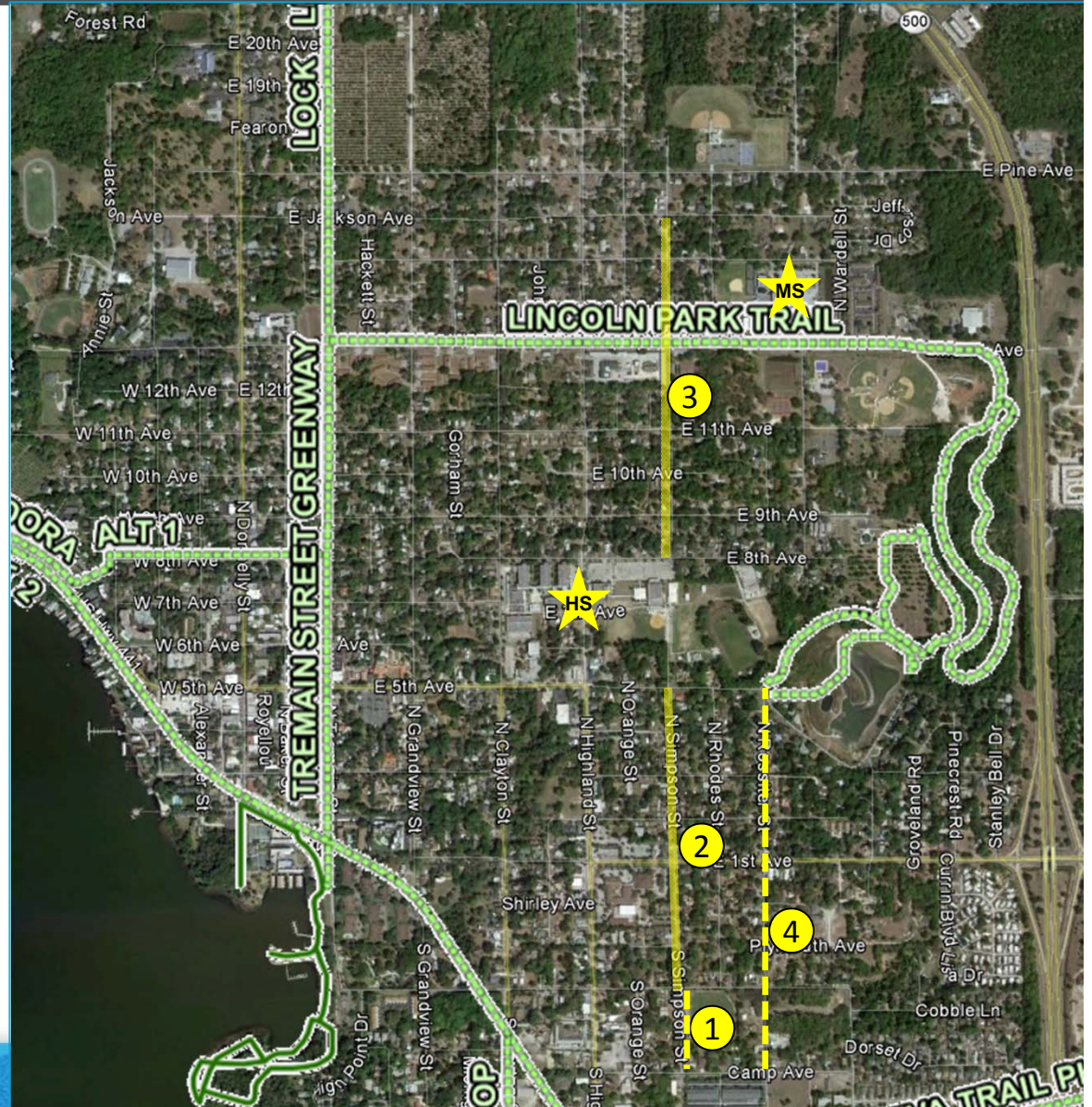
Project Number	Roadway	Location	Project
47	Orange Ave	Clayton St to Grandview St	Construct new sidewalk (City Priority D)
48	Rhodes St	1 <sup>st</sup> Ave to Liberty Ave	Construct new sidewalk (City Priority D)
49	Robie Ave	Highland St to Co. Maint.	Construct new sidewalk (City Priority D)
50	Rossiter St	Camp Ave to 1 <sup>st</sup> Ave	Construct new sidewalk (City Priority D)
51	Shirley Ave	Clayton St to Highland St	Construct new sidewalk (City Priority D)
52	Simpson St	Camp Ave to Liberty Ave	Construct new sidewalk (City Priority D)
53	Wardell St	Clara Morris Ave to Liberty Ave	Construct new sidewalk (City Priority D)



# Other Sidewalk / Crosswalk Projects

## Other Projects:

1. Construct sidewalk on east side of Simpson St from Camp Ave to Liberty Ave
2. Install crosswalks on Simpson St from Liberty Ave to 5<sup>th</sup> Ave
3. Install crosswalks on Simpson St from 8<sup>th</sup> Ave to Jackson Ave
4. Construct sidewalk on east side of Rossiter St from Camp Ave to 5<sup>th</sup> Ave

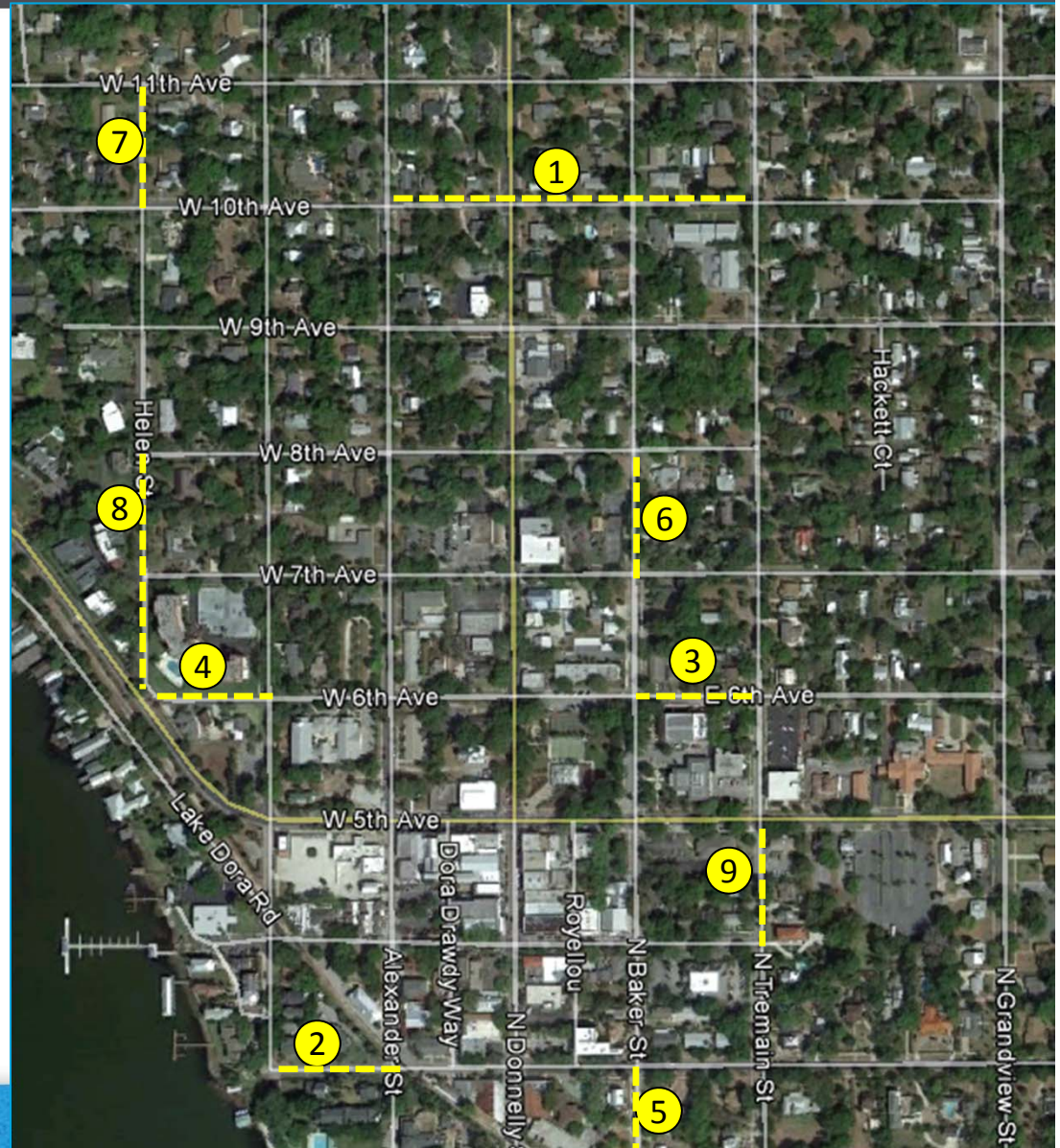




# City Priority A Sidewalk Projects

## Other Projects:

1. 10<sup>th</sup> Ave from Alexander St to Tremain St
2. 3<sup>rd</sup> Ave from Alexander St to McDonald St
3. 6<sup>th</sup> Ave from Tremain St to Baker St
4. 6<sup>th</sup> Ave from Helen St to McDonald St
5. Baker St from 3<sup>rd</sup> Ave to Railroad
6. Baker St from 8<sup>th</sup> Ave to 7<sup>th</sup> Ave
7. Helen St from 11<sup>th</sup> Ave to 10<sup>th</sup> Ave
8. Helen St from 8<sup>th</sup> Ave to 6<sup>th</sup> Ave
9. Tremain St from 5<sup>th</sup> Ave to 4<sup>th</sup> Ave

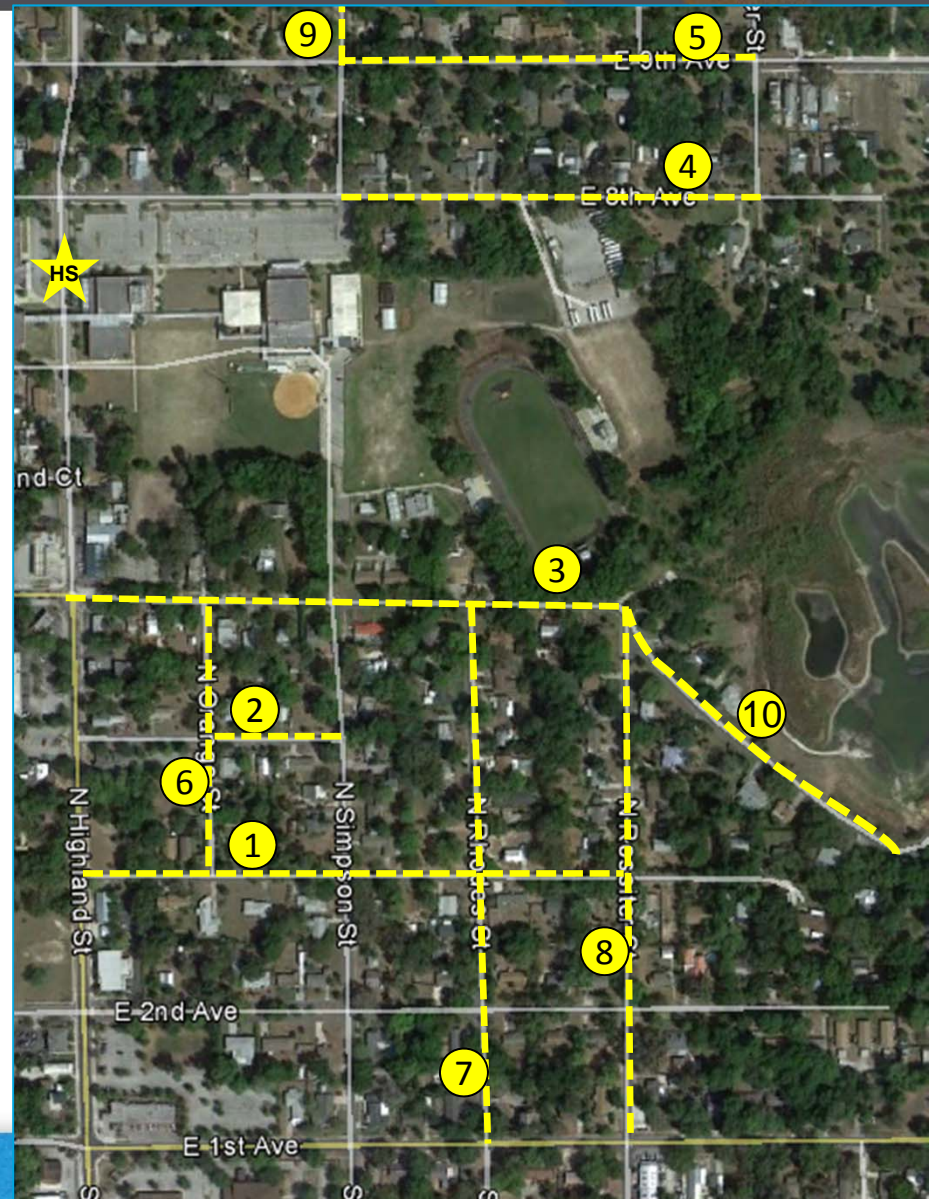




# City Priority B Sidewalk Projects

## Other Projects:

1. 3<sup>rd</sup> Ave from Rossiter St to Highland St
2. 4<sup>th</sup> Ave from Simpson St to Orange St
3. 5<sup>th</sup> Ave from Rossiter St to Simpson St
4. 8<sup>th</sup> Ave from Unser St to Simpson St (moved to Priority Project #7)
5. 9<sup>th</sup> Ave from Unser St to Simpson St
6. Orange St from 3<sup>rd</sup> Ave to 5<sup>th</sup> Ave
7. Rhodes St from 1<sup>st</sup> Ave to 5<sup>th</sup> Ave
8. Rossiter St from 1<sup>st</sup> Ave to 5<sup>th</sup> Ave
9. Rossiter St from 9<sup>th</sup> Ave to 11<sup>th</sup> Ave
10. Summit Ave from Lk Franklin Dr to Rossiter St





# City Priority C Sidewalk Projects

## Other Projects:

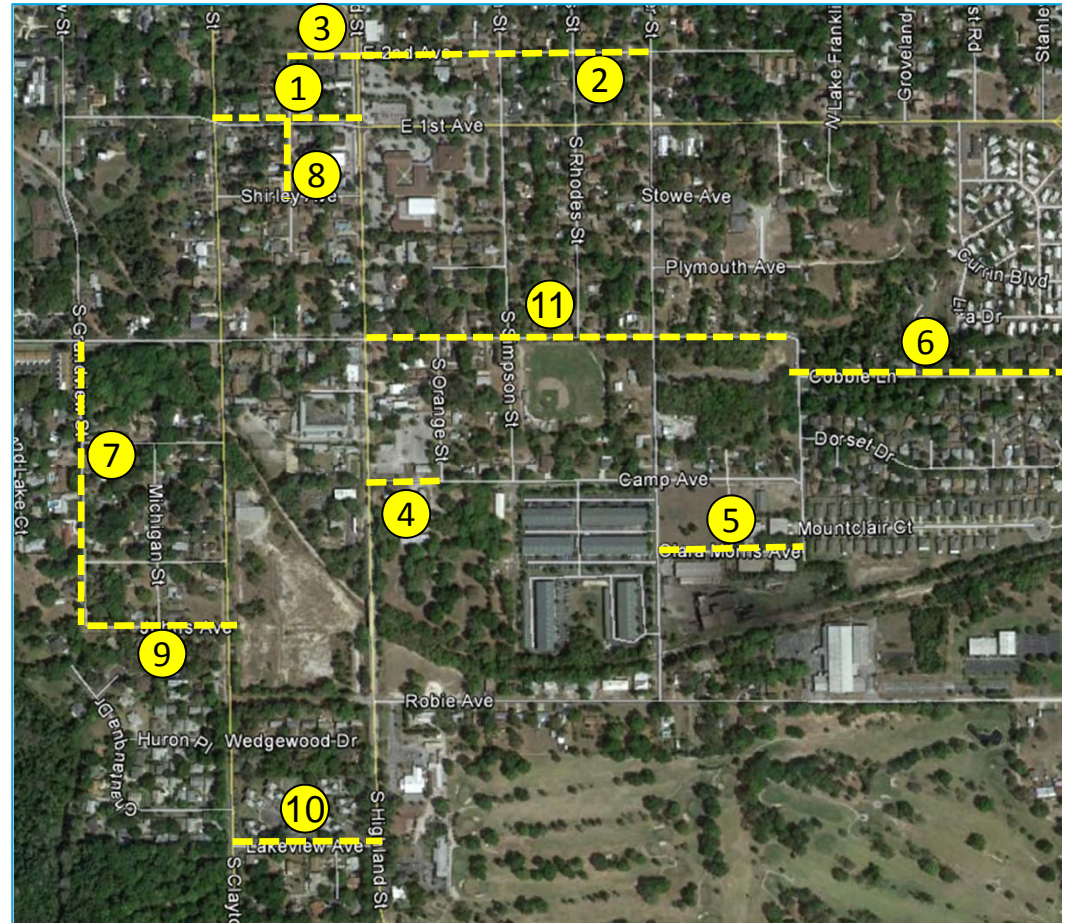
1. 11<sup>th</sup> Ave / Heim Rd from Overlook Dr to McDonald St
2. Crestview Dr from 11<sup>th</sup> Ave to Northside Dr
3. Hillside Dr from Hilltop Dr to Old Eustis Rd
4. Hilltop Dr from 11<sup>th</sup> Ave to Normandy Dr
5. Normandy Dr from 11<sup>th</sup> Ave to Overlook Dr
6. Northside Dr from Normandy Dr to end
7. Overlook Dr from 11<sup>th</sup> Ave to Old Eustis Rd





## Other Projects:

1. 1<sup>st</sup> Ave from Clayton St to Highland St
2. 2<sup>nd</sup> Ave from Rossiter St to Highland St
3. 2<sup>nd</sup> Ave from Johns St to Highland St
4. Camp Ave from Orange St to Highland St
5. Clara Morris Ave from Wardell St to Rossiter St
6. Cobble Ln from Wardell St to end
7. Grandview St from Johns Ave to Liberty Ave
8. Johns St from 2<sup>nd</sup> Ave to Shirley Ave
9. Johns Ave from Clayton St to Grandview St
10. Lakeview Ave from Highland St to Clayton St
11. Liberty Ave from Wardell St to Highland St









Mount Dora High School

## Contact Information

This website represents an ongoing commitment to increase safe access to schools within the Lake~Sumter Metropolitan Planning Organization Planning Area.

Updates to data, and suggestions for programming and project ideas are welcome from all agencies and the general public.

**Mike Woods**

Project Manager, Transportation Planner

(352) 315-0170

[mwoods@lakesumtermpo.com](mailto:mwoods@lakesumtermpo.com)



**Mindy Heath, AICP**

Consultant Project Manager

(407) 420-4200

[Mindy.heath@hdrinc.com](mailto:Mindy.heath@hdrinc.com)



*Promoting Regional  
Transportation Partnerships*