

# Spring Creek Charter School Paisley, FL

**Tran**Systems



Lake-Sumter  
**mpo**  
Metropolitan  
Planning Organization

June 2013



# Spring Creek Charter Elementary School Snapshot



Pre K-7<sup>th</sup> Grade

Total Students: 609

- Provided Bus Transportation: 486
- Not Provided Bus Transportation: 123

Students Living in the “Walk Zone”: 59

- Provided Bus Transportation: 29
- Not Provided Bus Transportation: 30

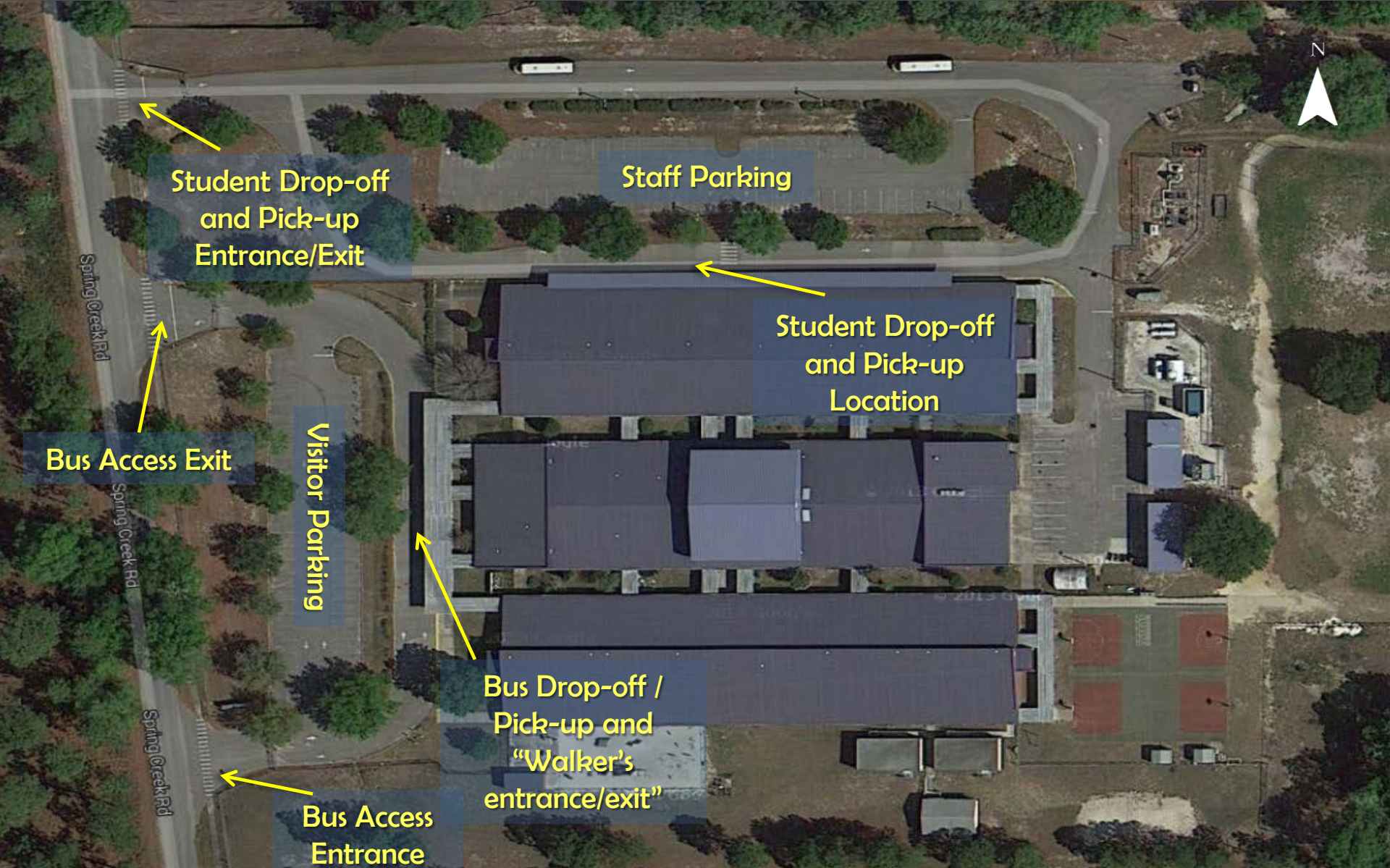
Observation Day (Clear)

- Walker’s (estimated): 4
- Bike Riders: 1



- ✓ School website – click [here](#)
- ✓ Paisley information website – click [here](#)
- ✓ Lake County School District website – click [here](#)





Student Drop-off and Pick-up Entrance/Exit

Staff Parking

Student Drop-off and Pick-up Location

Visitor Parking

Bus Drop-off / Pick-up and "Walker's entrance/exit"

Bus Access Entrance

Bus Access Exit



8:35 AM: School starts

2:55 PM: Bus/Car riders dismissed

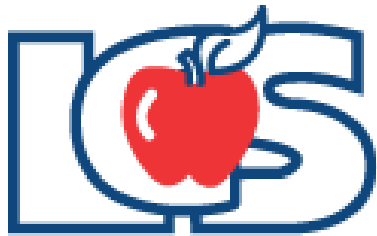
**Early Dismissal Every Wednesday:**





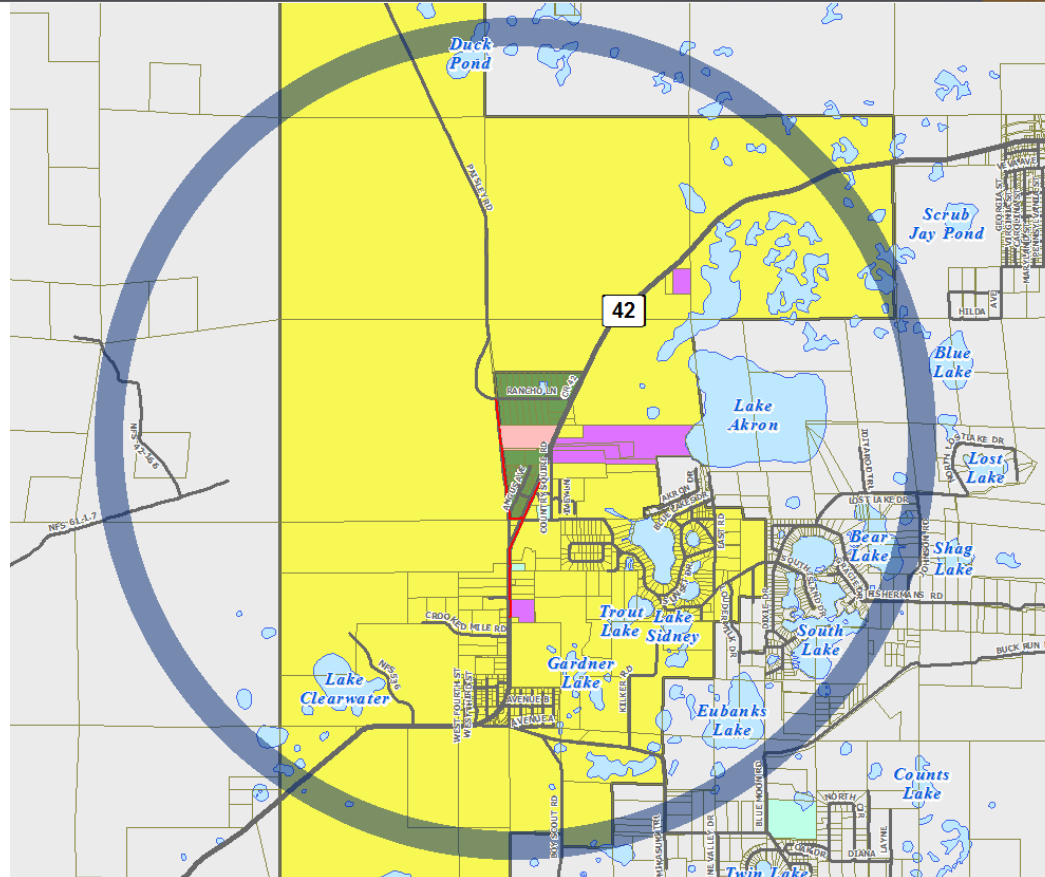
## Findings:

- ✓ On June 24, 2013 the Lake County School Board voted to formally discontinue all courtesy busing for elementary and middle school students who live within the 2-mile walk zone of the school.
  - ✓ By state law, Florida provides transportation funding only for traditional education students that live two or more miles from the school. The Lake County School Board unanimously made the decision to discontinue the service as it seeks cost-cutting measures to close a \$16 million gap in for the 2013 – 2014 proposed budget.
  - ✓ This essentially makes the new parent responsibility zone equal to the 2-mile walk zone, except for schools with identified Hazardous Walking Areas.





# Attendance Zone and 2-Mile "Walk" Zone Map



Sources: Lake District Schools GIS; Lake County GIS; LSMPO GIS; FDOT

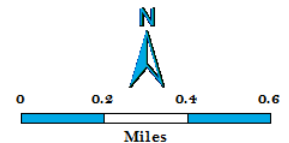
## Legend: Existing Conditions

- Spring Creek Charter Elementary School
- Crossing Guard Locations (None Currently)
- Existing Sidewalks
- Existing Trails
- Elementary (Primary) FTE Transportation Zones -- 2012-2013
- 2-Mile FDOE Walk Zone with no designations
- Parent Responsibility Zone

- Parcels
- School Property - Public
- Church Owned Property
- County Owned Property
- City Owned Property
- Water Bodies
- City Limit

- 2-Mile Buffer of Spring Creek Charter Elementary School
- Major Roads
- Local Roads
- Railroads
- Traffic Signal

**DRAFT**





## Findings:

- ✓ Signage for bus loop entrance are well marked from Spring Creek Road. Operations in the bus loop and loading/unloading work well for both arrival and dismissal times. For bus dismissal, students remain in their classroom and are called by bus via a color-code system.
- ✓ There are a total of 9 buses servicing the school.
- ✓ Bus loop has existing lighting.
- ✓ There are very few walkers and bicyclists currently at this school. The school sits in a rural setting.



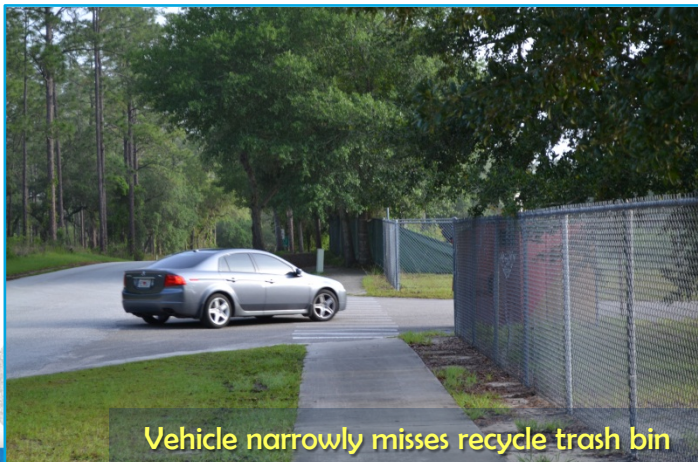


## Findings (continued):

- ✓ A red recycle trash bin is located at the entrance of the school bus loop off Spring Creek Rd and blocks vehicular viewing of school bus only signage from Spring Creek Rd.

## Recommendation:

- ✓ Relocate red recycle trash bin to another location to allow for safer vehicular right turns from Spring Creek Rd. A logical location for relocation could be to the northeast corner of property with other dumpsters. It currently blocks the “Buses Only” sign and is a hazard to vehicles entering teacher’s parking lot.





## Findings:

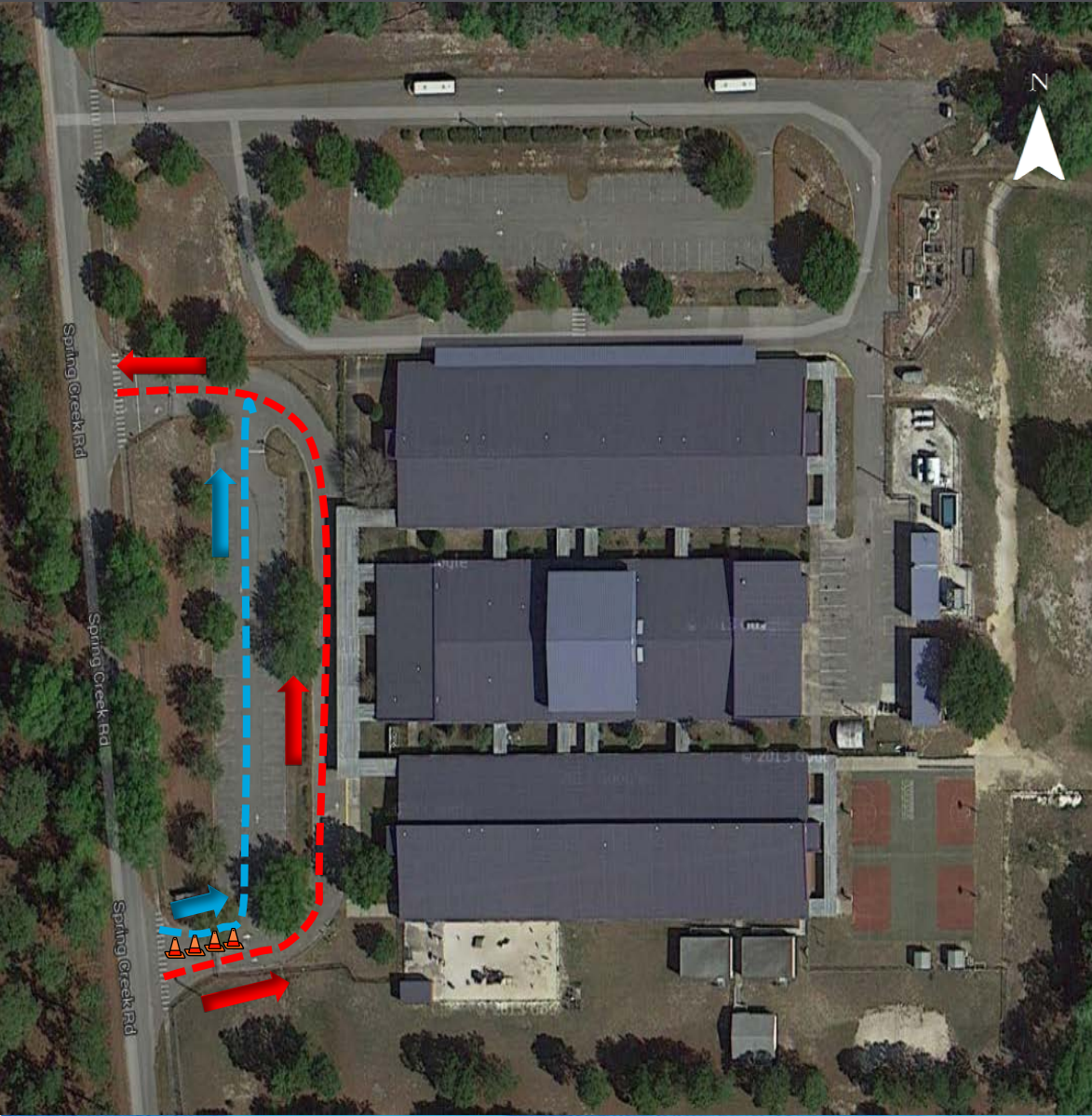
- ✓ School zone signage exists east and west of school along Spring Creek Rd. School zone paint markings on Spring Creek Rd at both locations east and west of campus need repainting for better visibility.
- ✓ There are no flashing school zone signs on Spring Creek Rd.

## Recommendation:

- ✓ Repaint school zone paint markings for better vehicular visibility on Spring Creek Rd.







## Findings (continued):

- ✓ Student Drop-off/Pick-up line “parent loop” is accessible from Spring Creek Rd. At student drop-off and pick up entrance traffic is one way through out to the exit. Temporary bollards have been setup at the entrance to divide traffic from vehicles going to the student drop-off/pick-up station area location or to the visitor’s parking lot.





## Findings:

- ✓ The drop-off station length is adequate for the accumulated car line. At dismissal time, the carline produced a length of approximately 15-20 cars and existing length of car loop appears adequate. Parents were observed parking in the Visitor Parking lot to pick up their student.
- ✓ The walkway from the staff parking lot does not have any pedestrian crossing signage present. See the “Recommended Projects” section later in this report for further details.





## Finding (continued):

- ✓ Tree vegetation at student drop-off pick-up exit at Spring Creek Road needs to be trimmed and the stop sign needs to be replaced due to fading.
- ✓ Two-way pavement markings are incorrect in Visitor Parking lot and needs to be corrected to allow for one-way travel direction only.

## Recommendation:

- ✓ Trim vegetation to allow for better vehicular viewing for both exit lanes at end of student drop-off and pick-up loop.





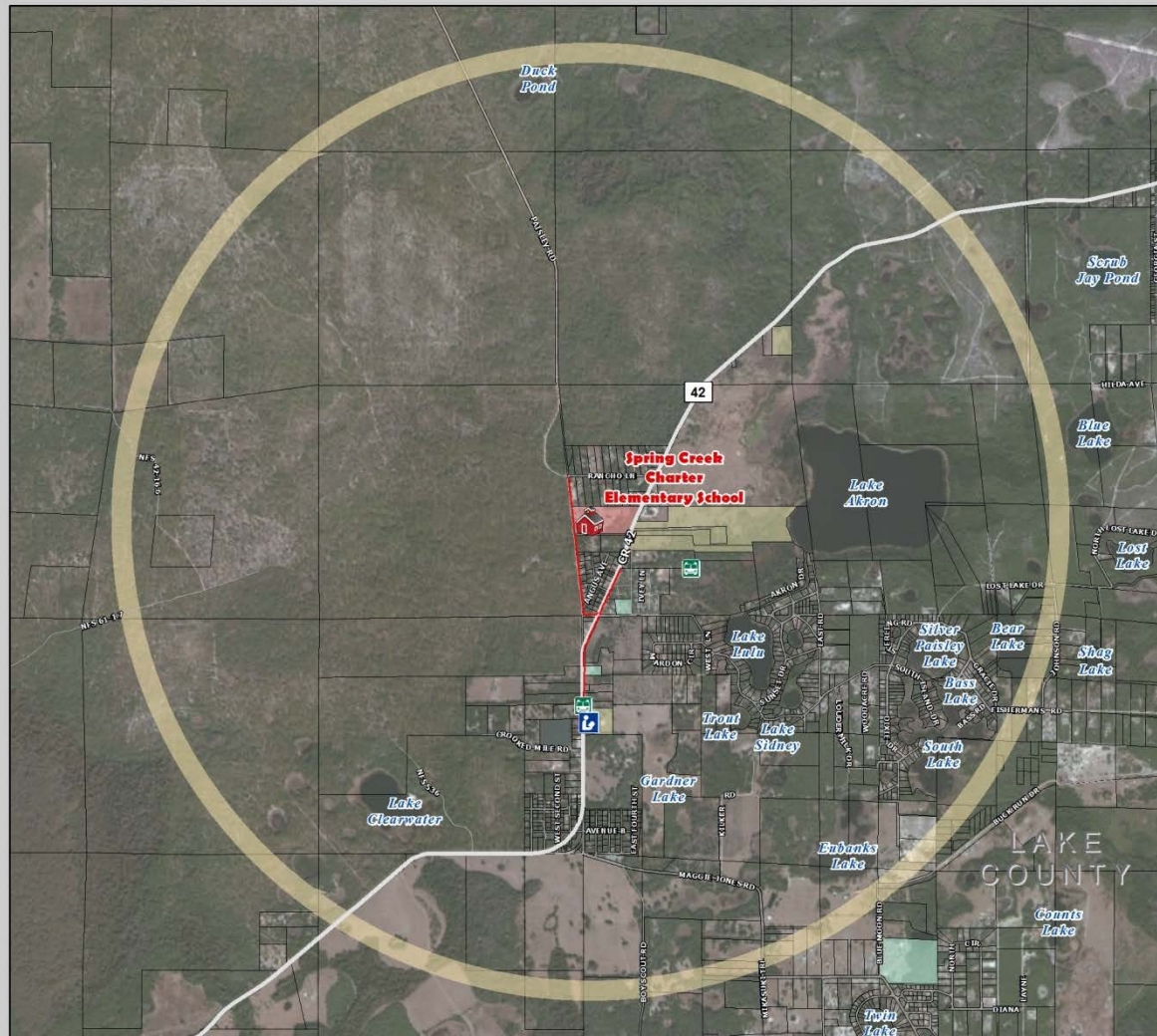
## Findings:

- ✓ Existing sidewalk along Spring Creek is in good condition, but it does not go into campus. A campus sidewalk access connection is needed. See “Recommended Projects” section later in this report for more in-depth project detail. Students cross vehicular exits to access campus in for arrival. For dismissal, walkers and bicyclists are released 10 minutes after the dismissal bell and led by school staff to a gate at center of fence, where students have to walk through visitor parking, student pick-up line, and swale. Walkers are released last to avoid traffic.





## Spring Creek Charter Elementary School: Existing Conditions Map



**LEGEND**

**Schools**

- Public Schools Lake County
- Libraries
- 2-Mile Buffer of School

**Property Ownership**

- Parcels
- School Property
- Lake County Owned Property
- City Owned Property
- Church Owned Property
- Golf Owned Property

**Parks**

- Parks

**Transportation Network**

- Major Roads
- Local Roads
- Existing Sidewalks
- LakeXpress Bus Stop
- LakeXpress Bus Routes
- Railroads
- Traffic Signal (State Roads)
- Flashing Beacon

Source: FDOT, Lake County Schools, Lake-Sumter MPO, and TranSystems

This map is intended for planning purposes only

0 0.2 0.4 0.8 Miles

**SafeAccess**  
A SAFE SCHOOLS TRANSPORTATION STUDY

Lake-Sumter MPO TranSystems

# Recommended Project List

Project Description	SAS Priority Project #	On/Off Campus
Interior Sidewalk Connection (north and south of campus) on Spring Creek Road	1	Off Campus
Rancho Lane 5' sidewalk (north side) with crosswalk from Spring Creek Road to County Road 42	2	Off Campus

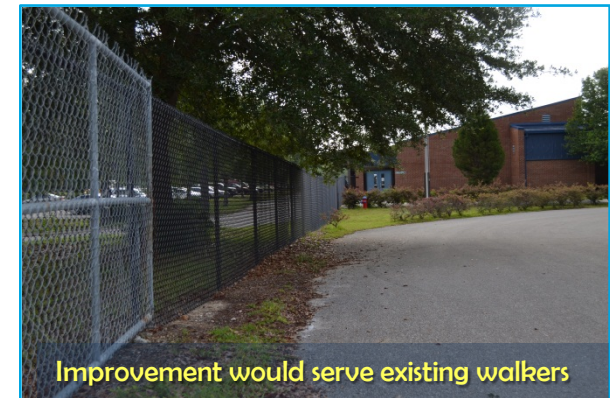
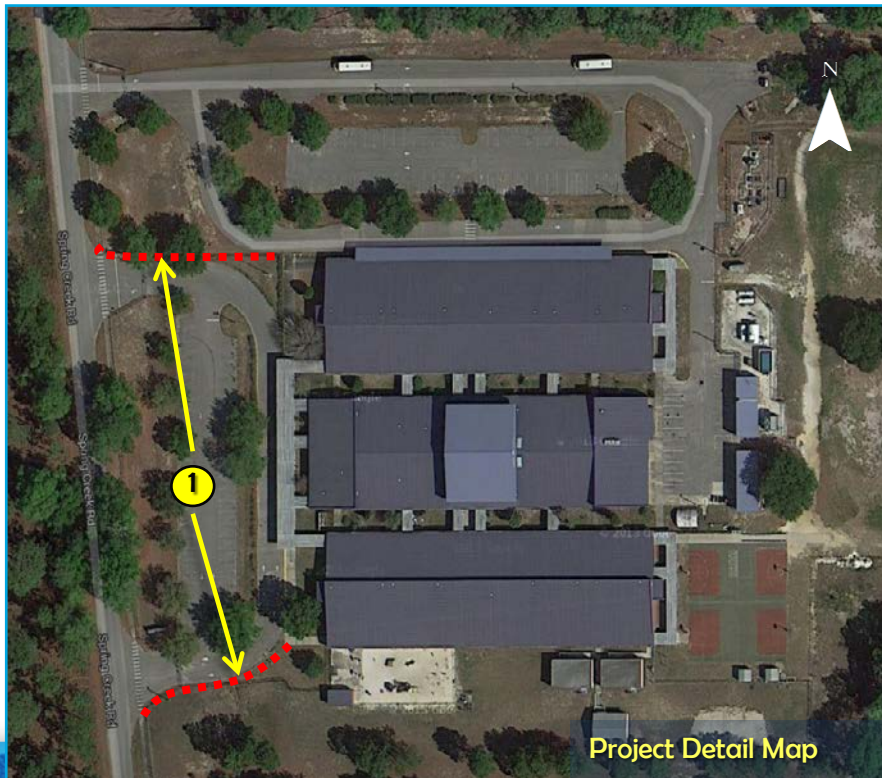




# Recommended Project #1 Interior Campus Sidewalks

## Recommendation:

- ✓ Construct 5' sidewalk interior sidewalk at entrance from existing sidewalk at north end of Visitor parking exit, and entrance to the Visitor lot from Spring Creek Rd with ADA compliant crosswalks at both crossings. This project would provide safe continuous street access to school via sidewalk for existing and future walkers to add to existing infrastructure. Door near fence can become new bike rack area and a dedicated walker's entrance and exit point.
- ✓ Project would serve existing student walkers from Spring Creek Charter Elementary School.





## BEFORE (South End):





## AFTER (South End):

*Note: For planning purposes only. Not drawn to scale or engineering specifications*





## BEFORE (North End):





## AFTER (North End):

*Note: For planning purposes only. Not drawn to scale or engineering specifications*

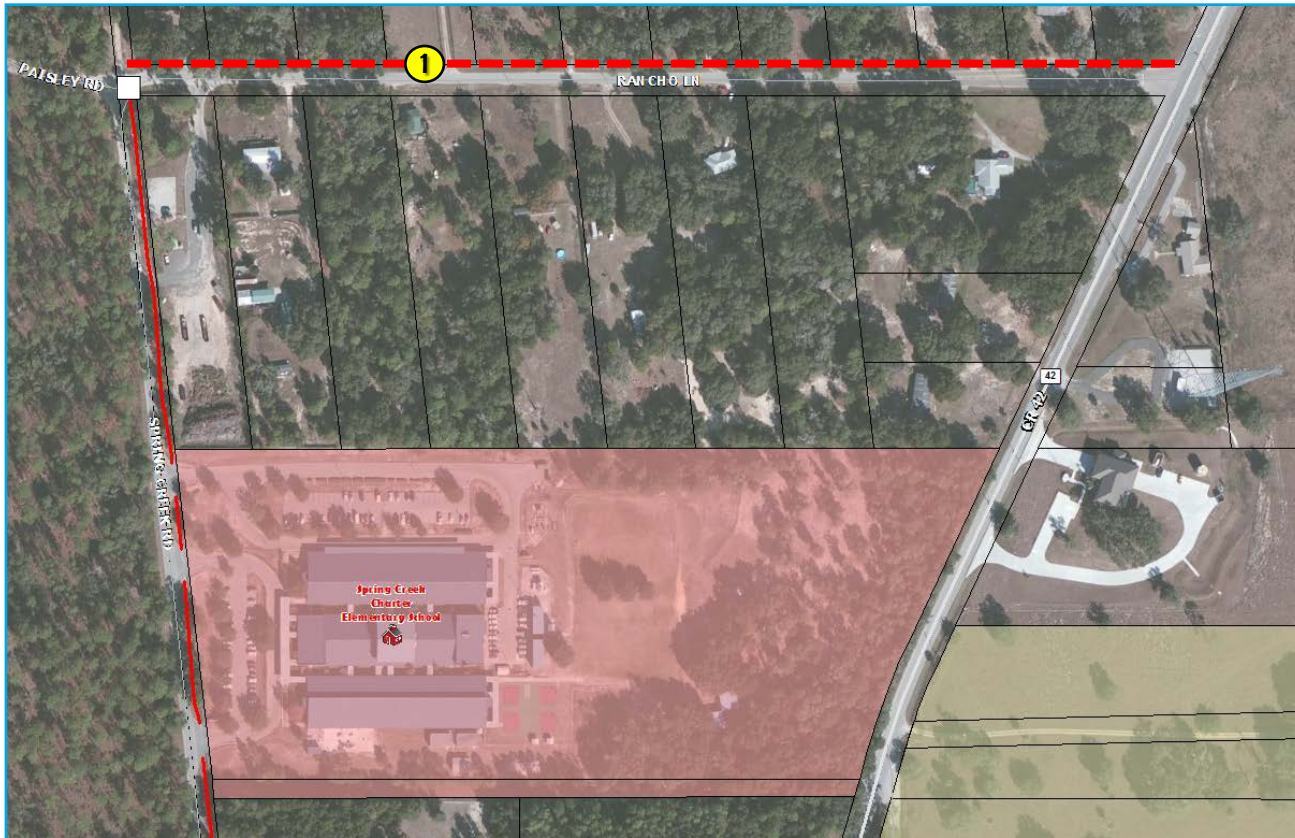




# Recommended Project #2 Rancho Lane Sidewalk (North Side)

## Recommendation:

- ✓ Construct 5' sidewalk from Spring Creek Rd. to County Road 42 with stop condition at Spring Creek Rd/Rancho Ln.
- ✓ Project would serve existing student walkers from Spring Creek Charter Elementary School.





# Recommended Project #1 Rancho Lane Sidewalk (North Side)

**BEFORE:**





# Recommended Project #1 Rancho Lane Sidewalk (North Side)

**AFTER:**

*Note: For planning purposes only. Not drawn to scale or engineering specifications*





# Recommended Project #1 Rancho Lane Sidewalk (North Side)

**BEFORE:**





# Recommended Project #1 Rancho Lane Sidewalk (North Side)

**AFTER:**

*Note: For planning purposes only. Not drawn to scale or engineering specifications*





This website represents an ongoing commitment to increase safe access to schools within the Lake~Sumter Metropolitan Planning Organization Planning Area.

Updates to data, and suggestions for programming and project ideas are welcome from all agencies and the general public.

**Mike Woods**

Project Manager, Transportation Planner

(352) 315-0170

[mwoods@lakesumtermpo.com](mailto:mwoods@lakesumtermpo.com)



**Doug Lynch, GISP**

Consultant Project Manager

(407) 875-8938

[dwlynch@transystems.com](mailto:dwlynch@transystems.com)



*Promoting Regional  
Transportation Partnerships*