



A SAFE SCHOOLS TRANSPORTATION STUDY

Seminole Springs Elementary School Sorrento, FL

TranSystems



May 2013

Seminole Springs Elementary School Snapshot



K-5th Grade

Total Students: 609

- Provided Bus Transportation: 486
- Not Provided Bus Transportation: 123

Students Living in the “Walk Zone”: 59

- Provided Bus Transportation: 29
- Not Provided Bus Transportation: 30

Observation Day (Clear)

- Walker’s (estimated): 0
- Bike Riders: 0



✓ School website – click [here](#)

✓ Sorrento information website – click [here](#)

✓ Lake County School District website – click [here](#)

Seminole Springs Elementary School

School Zone
Flashing
Beacon

Bus Access
Entrance

Visitor Parking

Bus Drop-off /
Pick-up

Bus Access Exit

School Zone
Flashing
Beacon

W Huff Rd

Staff Parking

Parent Drop-off
and Pick-up
Location



Arrival and Dismissal Schedule

8:35 AM: School starts

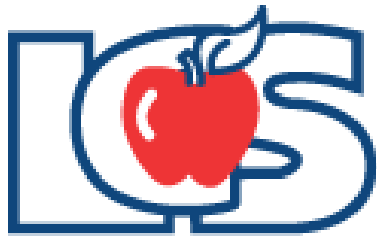
2:55 PM: Bus/Car riders dismissed

Early Dismissal Every Wednesday:

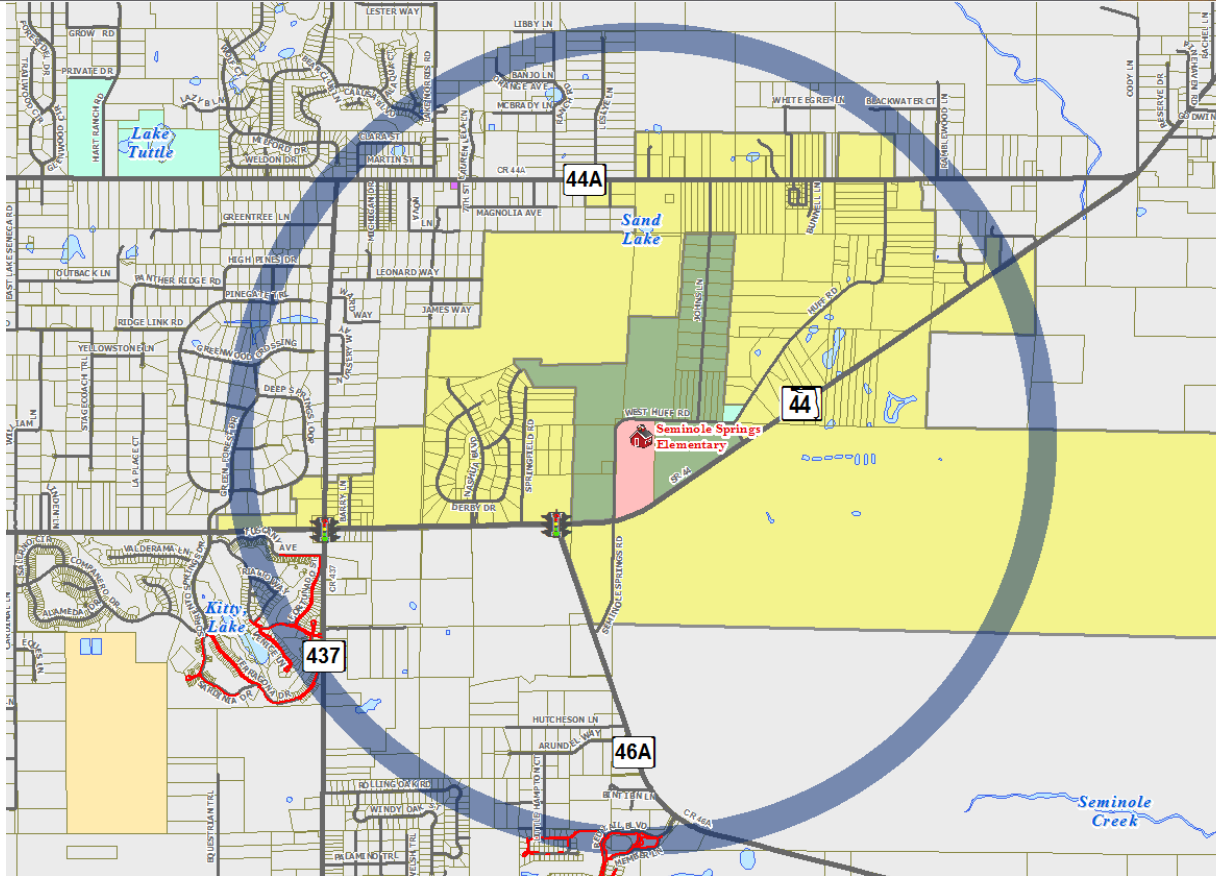


Findings:

- ✓ On June 24, 2013 the Lake County School Board voted to formally discontinue all courtesy busing for elementary and middle school students who live within the 2-mile walk zone of the school.
 - ✓ By state law, Florida provides transportation funding only for traditional education students that live two or more miles from the school. The Lake County School Board unanimously made the decision to discontinue the service as it seeks cost-cutting measures to close a \$16 million gap in for the 2013 – 2014 proposed budget.
 - ✓ This essentially makes the new parent responsibility zone equal to the 2-mile walk zone, except for schools with identified Hazardous Walking Areas.



Attendance Zone and 2-Mile "Walk" Zone Map

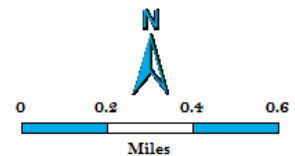


Legend: Existing Conditions

- Seminole Springs Elementary School
- Crossing Guard Locations (None Currently)
- Existing Sidewalks
- Existing Trails
- 2-Mile FDOE Walk Zone with no designations
- Parent Responsibility Zone
- Parcels
- School Property - Public
- Church Owned Property
- County Owned Property
- City Owned Property
- Water Bodies
- City Limit
- 2-Mile Buffer of Seminole Springs Elementary School
- Major Roads
- Local Roads
- Railroads
- Traffic Signal

Elementary (Primary) FTE Transportation Zones – 2012-2013
Representation: Elementary Primary FTE

DRAFT



Findings:

- ✓ Signage for bus loop entrance are well marked from W. Huff Road. Operations in the bus loop and loading/unloading works well for both arrival and dismissal times.
- ✓ There are a total of 9 buses servicing the school.
- ✓ Bus loop has no lighting.
- ✓ There are no walkers and bicyclists currently at this school. The school sits in a rural setting.



Seminole Springs Elementary School

Finding:

- ✓ School zone signage exists east and west of school along W. Huff Road. School zone paint markings on W Huff Road at both locations east and west of campus need repainting for better visibility.

Recommendation:

- ✓ Repaint school zone paint markings for better vehicular visibility on W Huff Road.



School zone markings on W Huff Road (east of campus)



School zone markings on W Huff Road (west of campus)



School zone flashing beacon signage on W Huff Road

School Hours and Schedule

8:35 AM: School starts

2:55 PM: Bus/Car riders dismissed

Early Dismissal Every Wednesday:



Student Drop-off & Pick-up



Findings:

- ✓ Student Drop-off/Pick-up line “parent loop” is accessible from W Huff Road.
- ✓ Double-back system setup, with one lane of traffic in, one lane of traffic out. Entrance and exit location has two way traffic.



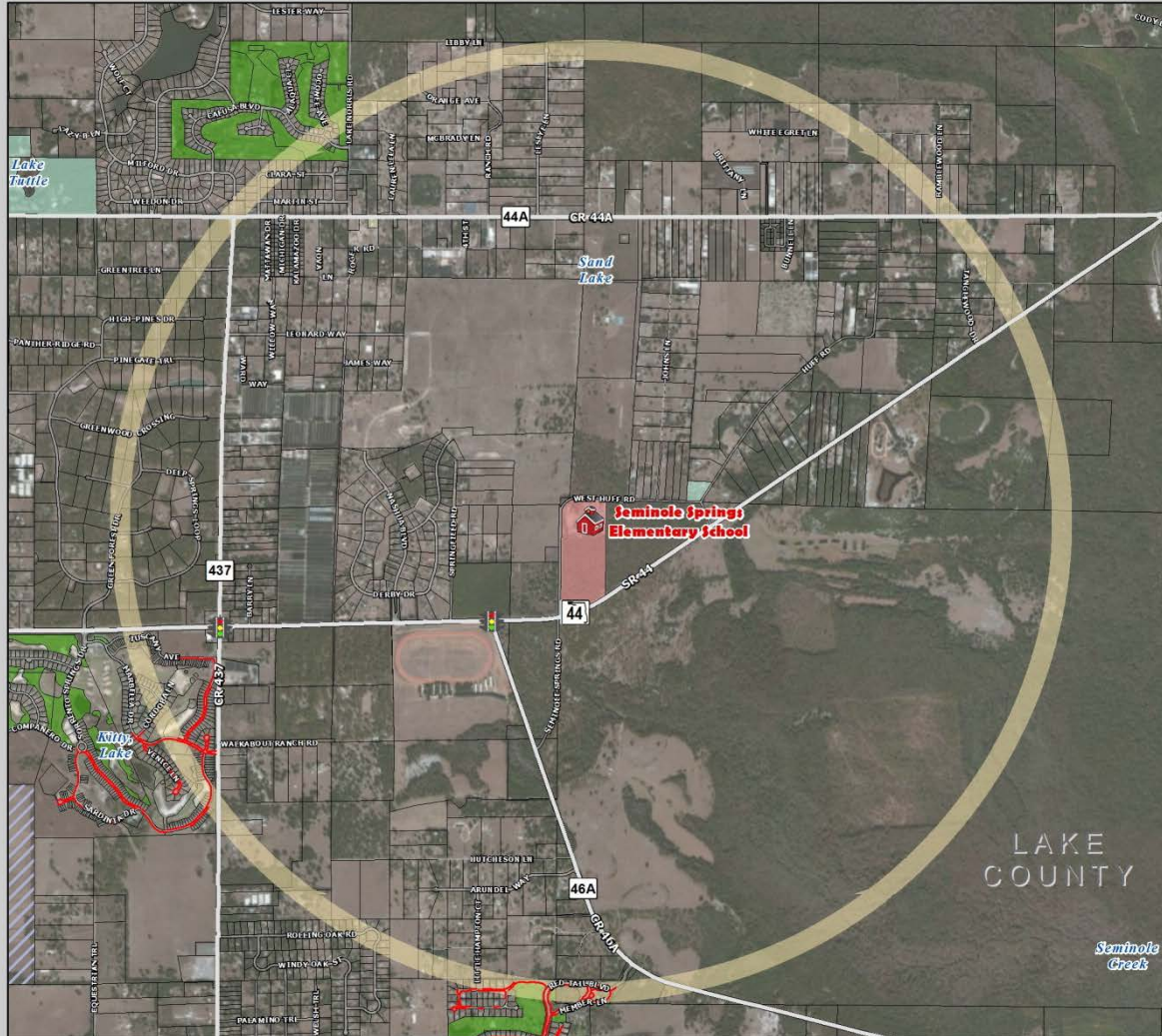
Findings:

- ✓ The drop-off station area is adequate. Students are help behind a fenced area at selective station areas as they wait for their parents to pick them up.
- ✓ At dismissal time, the carline produced a length of approximately 60 cars and existing length of car loop appears adequate.
- ✓ The walkway from the staff parking lot does not have any pedestrian crossing signage present. See the “Other Project Recommendations” section later in this report for further improvement recommendation details.



Seminole Springs Elementary School

Seminole Springs Elementary School: Existing Conditions Map



LEGEND

- Schools**
 - Public Schools Lake County
- Libraries**
- 2-Mile Buffer of School
- Property Ownership**
 - Parcels
 - School Property
 - Lake County Owned Property
 - City Owned Property
 - Church Owned Property
 - Golf Owned Property
- Parks**
- Transportation Network**
 - Major Roads
 - Local Roads
 - Existing Sidewalks
 - LakeXpress Bus Stop
 - LakeXpress Bus Routes
 - Railroads
 - Traffic Signal (State Roads)
 - Flashing Beacon

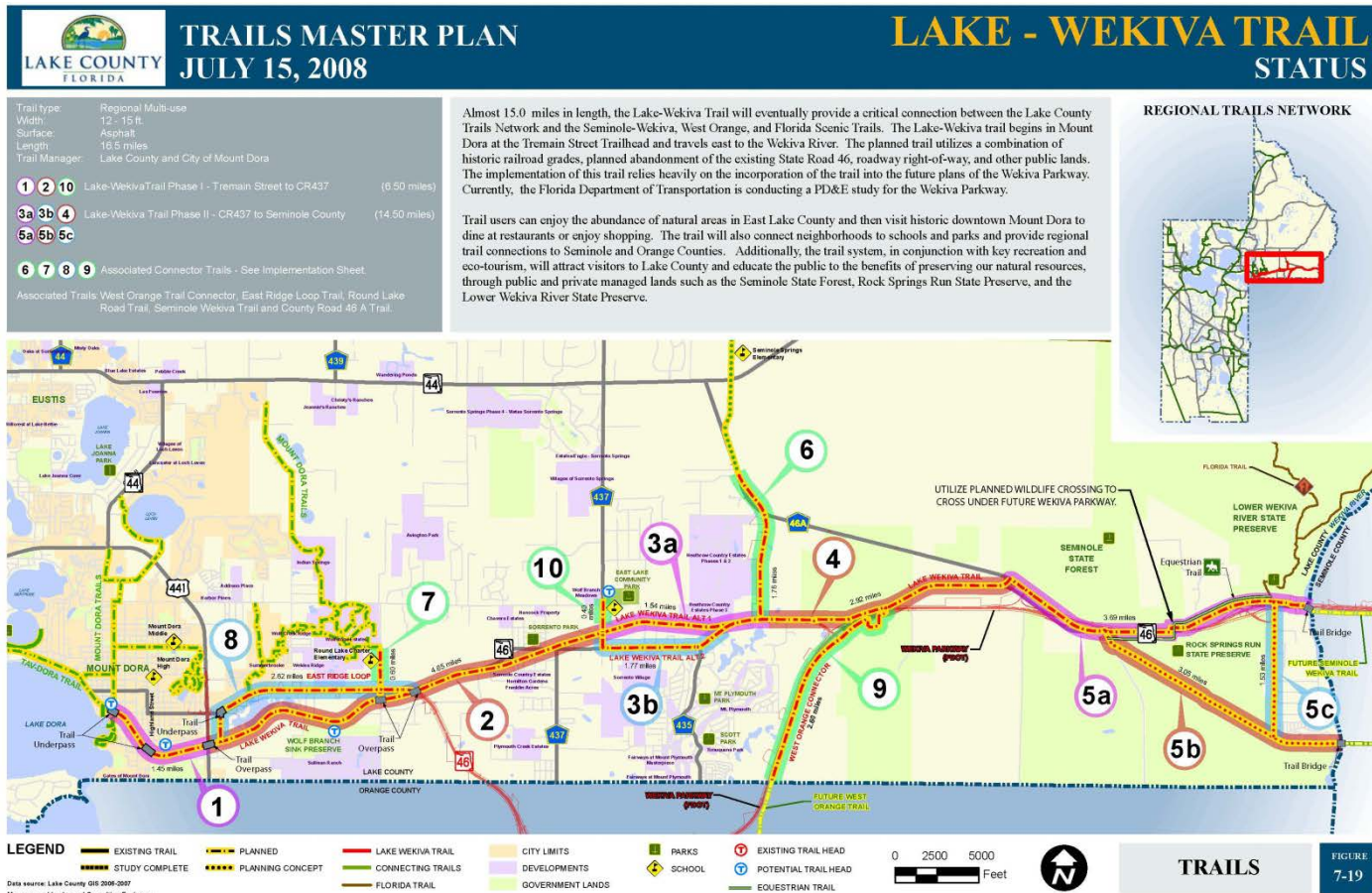
Source: FDOT, Lake County Schools, Lake-Sumter MPO, and TranSystems
This map is intended for planning purposes only

0 0.2 0.4 0.8 Miles

Seminole Springs Elementary School

Findings:

- ✓ As identified in the Lake County Trails Master Plan, the Lake-Wekiva Trail a.k.a. "Wekiva Trail" is being planned for construction in the near term. A trailhead and extension up CR 437 from the main trail is being considered by local stakeholders. Map link 6 below shows the preliminary trail extension connecting Seminole Springs Elementary School.



Recommended Project List

Project Description	SAS Priority Project #	On/Off Campus
W Huff Road 5' sidewalk (north side) from Seminole Springs Baptist Church to School with crosswalks and ADA improvements	1	Off Campus



Recommendation:

- ✓ Construct 5' sidewalk from Seminole Springs Baptist Church to Student Drop-off and Pick-up entrance with Crosswalks and ADA improvements.
- ✓ Project would serve Seminole Springs Elementary School students east of campus and for potential new development north of campus. School will need to coordinate with Seminole Springs Baptist Church to become school off-site drop-off area for students to take sidewalk to school from.



BEFORE:



Recommended Project #1 W Huff Road Sidewalk (North Side)

AFTER:

For planning purposes only. Concept not to engineering scale.



BEFORE:

When walkers become present, this concept would connect to the new W Huff Road sidewalk.



AFTER:

For planning purposes only. Concept not to engineering scale.



BEFORE:

When walkers become present, this concept would connect to the new W Huff Road sidewalk.



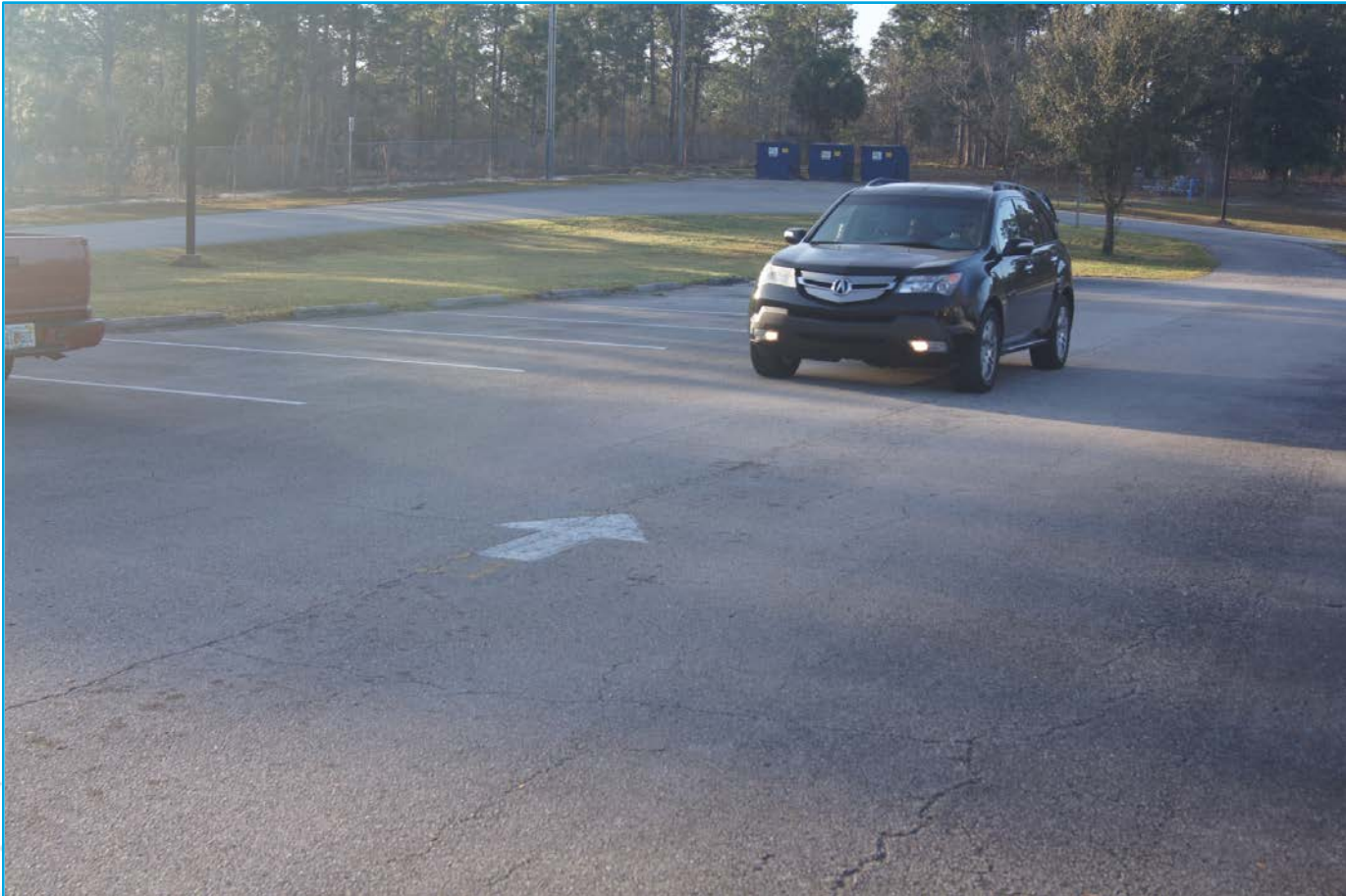
AFTER:

For planning purposes only. Concept not to engineering scale.



Recommendation:

- ✓ Fix wrong direction arrow marking in staff parking lot area.



Recommendation:

- ✓ Improvements to pedestrian crossing area in staff parking lot needs safety improvements including crosswalk ladder-style paint markings and vehicular pedestrian crossing signage.



BEFORE:



AFTER:

For planning purposes only. Concept not to engineering scale.



This website represents an ongoing commitment to increase safe access to schools within the Lake~Sumter Metropolitan Planning Organization Planning Area.

Updates to data, and suggestions for programming and project ideas are welcome from all agencies and the general public.

Mike Woods

Project Manager, Transportation Planner

(352) 315-0170

mwoods@lakesumtermpo.com



Doug Lynch, GISP

Consultant Project Manager

(407) 875-8938

dwlynch@transystems.com



*Promoting Regional
Transportation Partnerships*