

DRAFT

BOOK SHELF MEDIA CENTER
5:00-7:00 PM FEB 5 AN 19

ADMINISTRATION →

The Villages
Elementary
of Lady Lake

The Villages Elementary
School of Lady Lake
Lady Lake, FL

TranSystems



The Villages Elementary School

Snapshot

The Villages Elementary School of Lady Lake



February 14, 2013

Grades Pre-K – 5th Grade

Total Students: 871

- Provided Bus Transportation: 458
- Not Provided Bus Transportation: 391

Students Living in the “Walk Zone”: 195

- Provided Bus Transportation: 94
- Not Provided Bus Transportation: 101

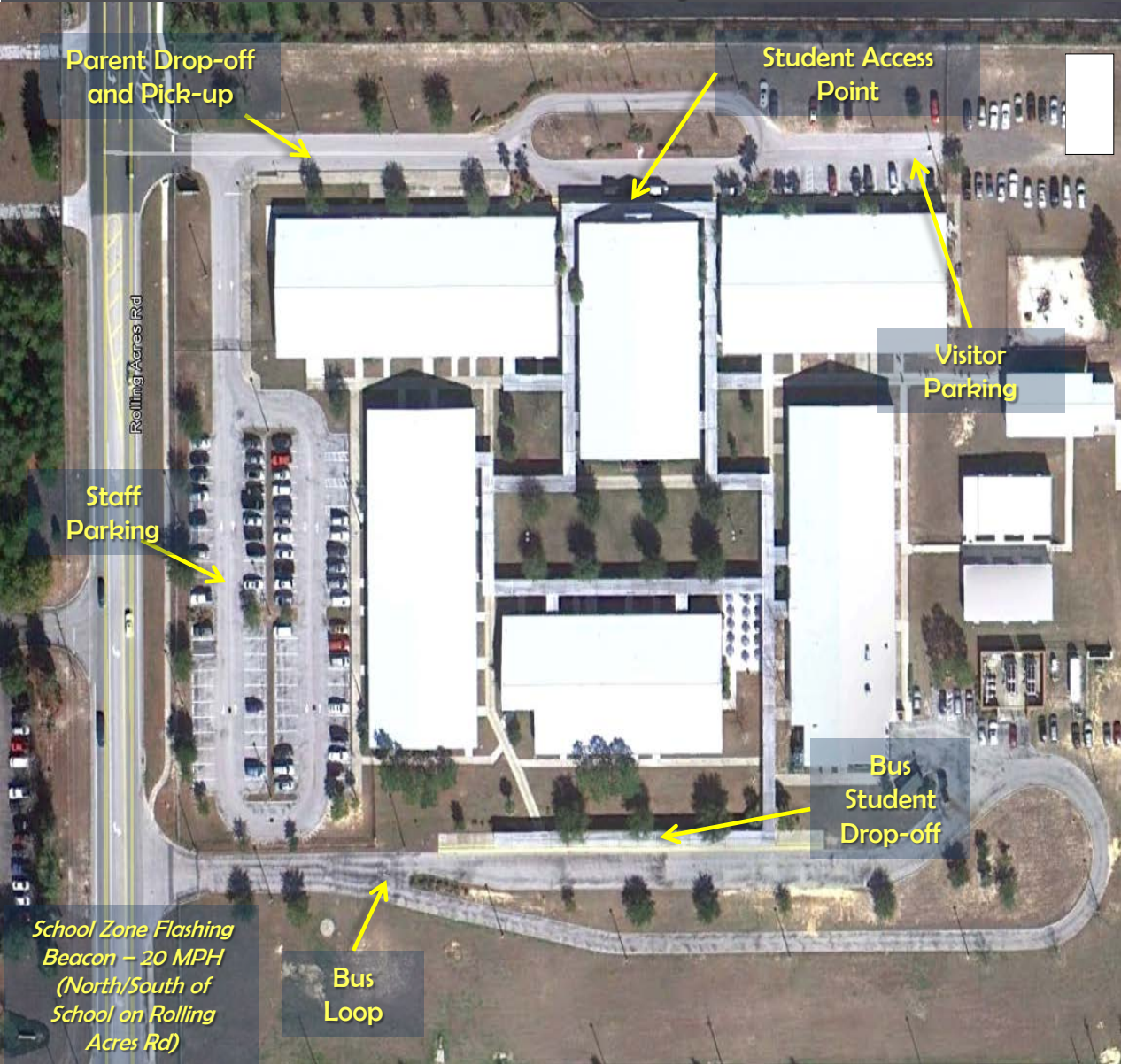
Observation Day (Partly Cloudy/Rain)

- Walker’s (estimated): 40
- Bike Riders: 0



- ✓ School website – click [here](#)
- ✓ Town of Lady Lake website – click [here](#)
- ✓ Lake County School District website – click [here](#)

The Villages Elementary School of Lady Lake

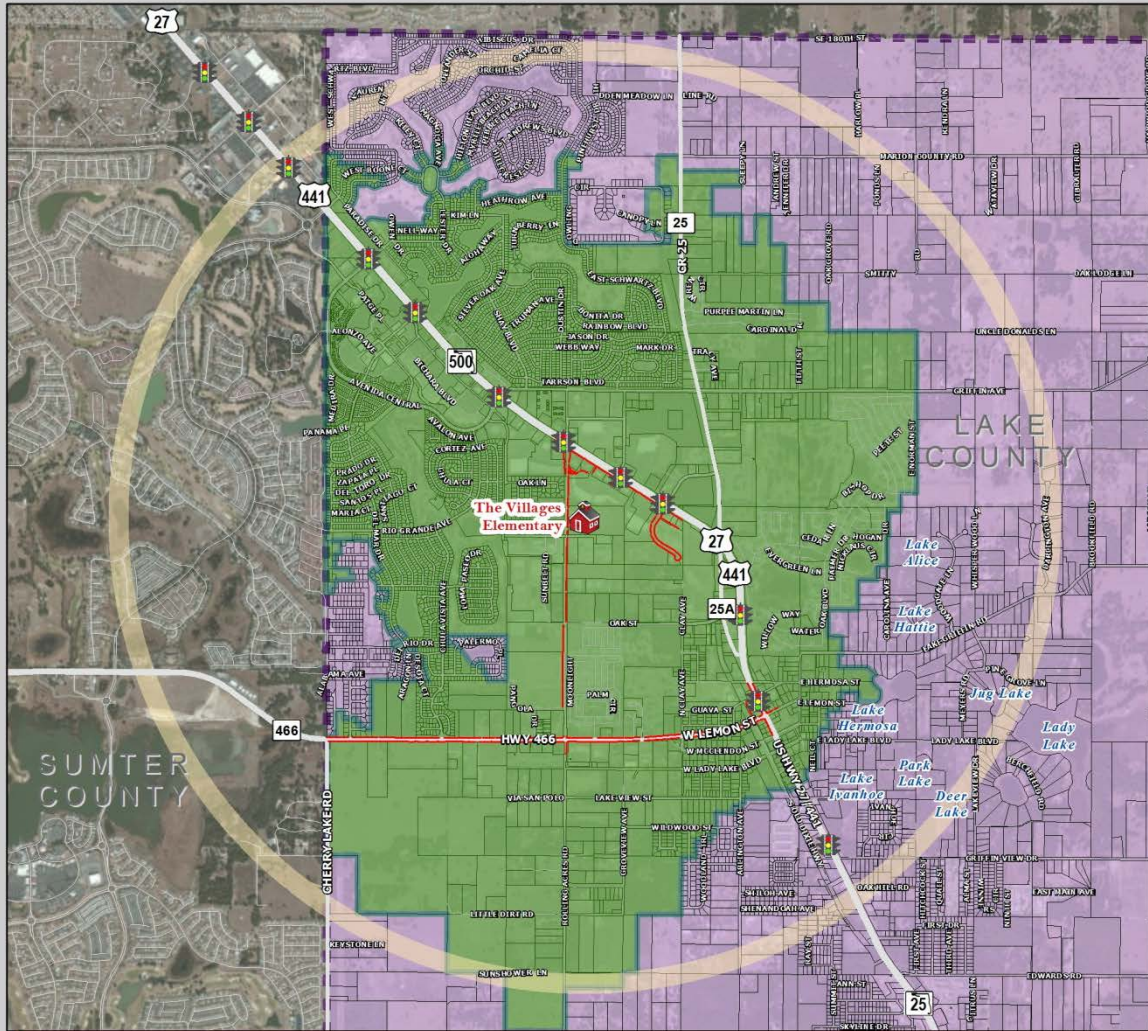


Findings:

- ✓ Built in 1999, and due to the schools location, and current sidewalk connectivity gaps, over 50% of students are bused.
- ✓ Rolling Acres Road carries steady, continuous traffic throughout the day serving as a primary north/south road for through traffic from CR 466 to US 441. This stretch of road carries 12,500 annual average daily traffic (AADT) according to 2012 FDOT Traffic Counts.
- ✓ Parent Drop-off and Pick-up location is separated from bus loop.
- ✓ School zone flashers exist north and south of school property on Rolling Acres Rd.
- ✓ Staff and visitor parking is separated.

The Villages Elementary School of Lady Lake

The Villages Elementary School: Attendance and 2-Mile "Walk" Zone Map



LEGEND

Schools

- Public Schools Lake County
- 2-Mile Buffer of School
- Parent Responsibility Zone
- School Attendance Zone (2012-2013)

Property Ownership

- Parcels
- Parks

Transportation Network

- Major Roads
- Local Roads
- Existing Sidewalks
- LakeXpress Bus Stop
- LakeXpress Bus Routes
- Railroads
- Traffic Signal (State Roads)
- Flashing Beacon

Sources: FDOT, Lake County Schools, Lake-Sumter MPO, and TranSystems

This map is intended for planning purposes only

0 0.2 0.4 0.6 Miles

SafeAccess
A SAFE SCHOOLS TRANSPORTATION STUDY

Lake-Sumter MPO
TranSystems

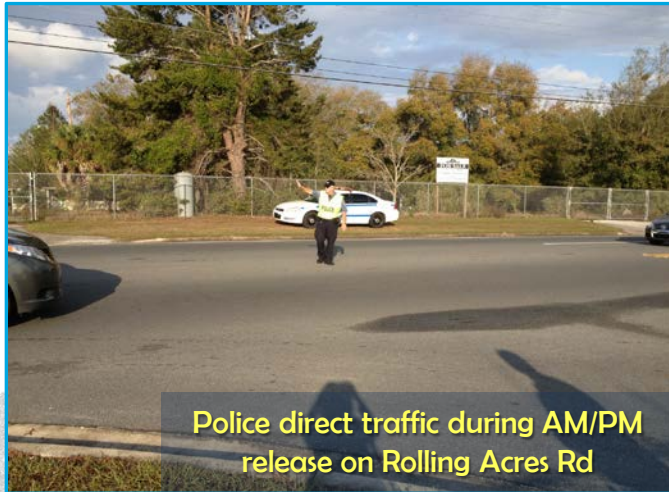
The Villages Elementary School of Lady Lake

8:00-8:25: Buses begin arriving; total of 10 buses (9 regular, 1 ESE)

8:35 am: School start time

3:05 pm: School release time (car riders/bus riders dismissed)

Early Dismissal Every Wednesday:



Police direct traffic during AM/PM
release on Rolling Acres Rd



Bud loop entrance on Rolling Acres
Rd – south part of campus

The Villages Elementary School of Lady Lake

Findings:

- ✓ Signage for bus loop entrance are clearly marked.
- ✓ Operations in the bus loop and loading/unloading works well.
- ✓ Observed adequate bus loop lighting in the am.
- ✓ Bus loop queue of 10 total buses does not overwhelm the bus loop, and could accommodate more buses, if needed.



School staff assisting students to school (AM)



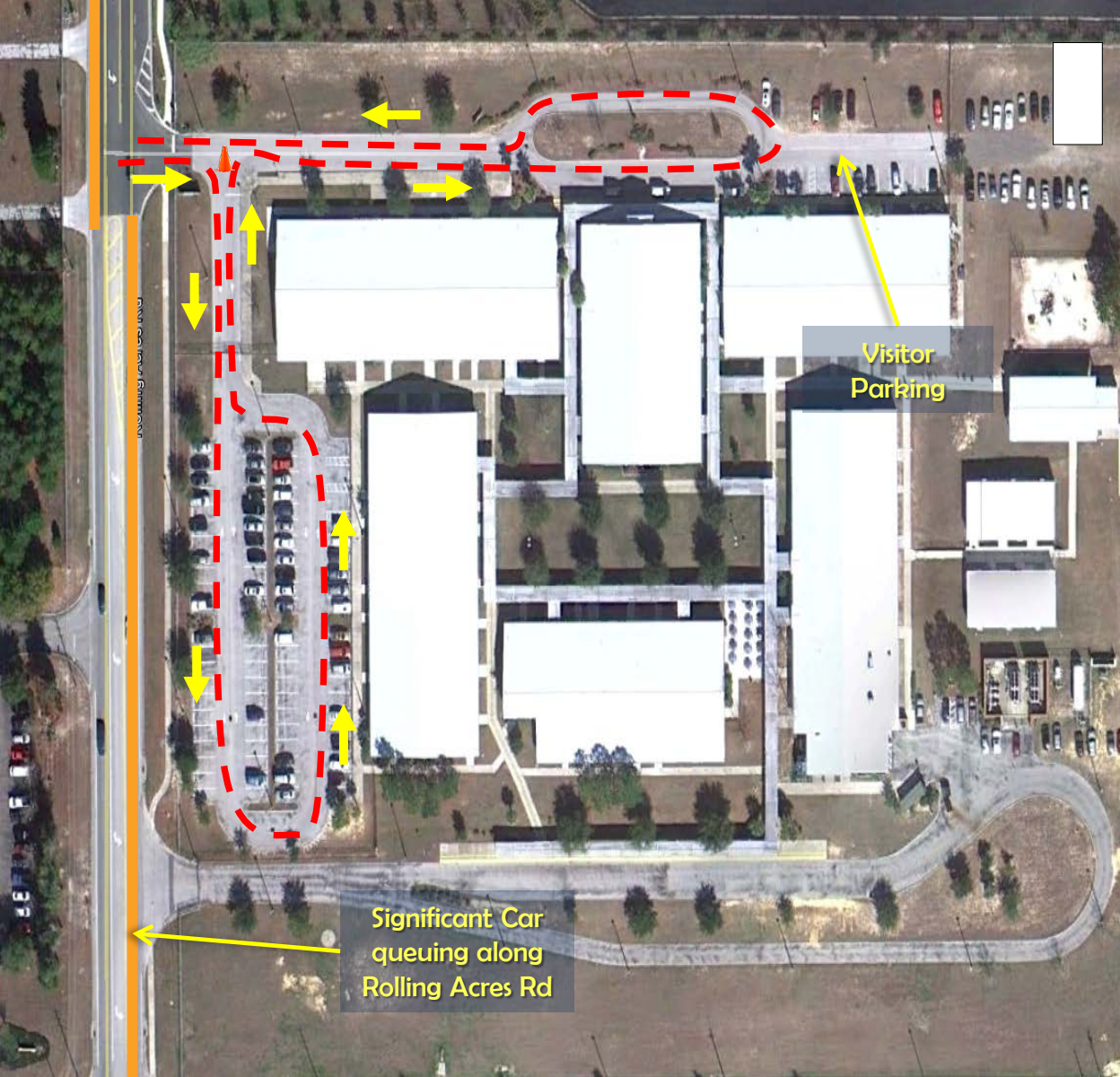
Bus loop – facing west off Rolling Acres Rd



Bus queue (AM)

Parent Drop-off & Pick-up Parent Route

The Villages Elementary School of Lady Lake



Findings:

- ✓ Drop-off and pick-up location is located on north end of the campus adjacent to the visitor's parking lot.
- ✓ Rolling Acres Rd traffic queues significantly during arrival/dismissal times.
- ✓ Town of Lady Lake has placed a Community Service Aide for arrival/dismissal times
- ✓ Maximum of over 80 cars observed in car line queue for pm dismissal.
- ✓ Very tight turn radius required when parents are forced to turn right off Rolling Acres Rd (near school sign monument)
- ✓ Remote drop-off walkers are currently forced to walk into car line to cross toward sidewalk adjacent to school.

The Villages Elementary School of Lady Lake

Findings (Continued):

- ✓ School staff places orange traffic cones near car line entrance/exit to force car line into and around the staff parking lot. At least 20 vehicles were observed with their tires running onto the curb entrance to staff parking lot area to follow dedicated car line route.



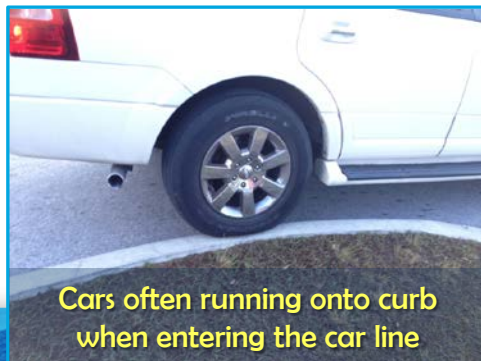
Car entrance/exit off Rolling Acres Rd



PM car line queuing on Rolling Acres Rd (facing south)



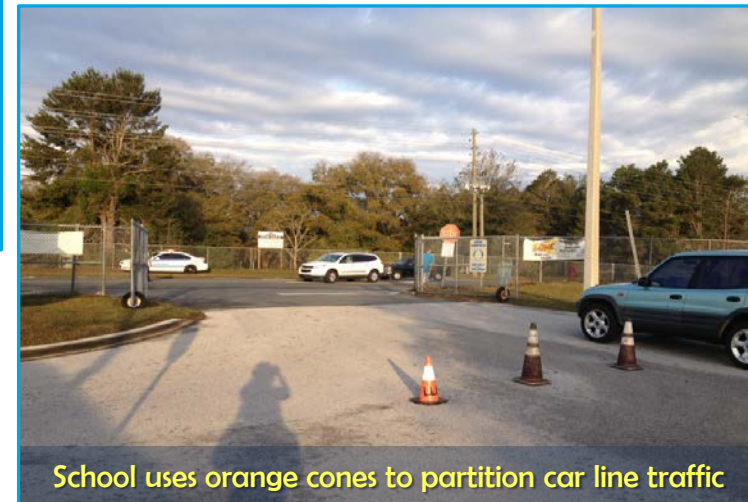
Many parents/students were observed crossing the car line traffic



Cars often running onto curb when entering the car line



A few cars were observed moving around cones to avoid car line



School uses orange cones to partition car line traffic

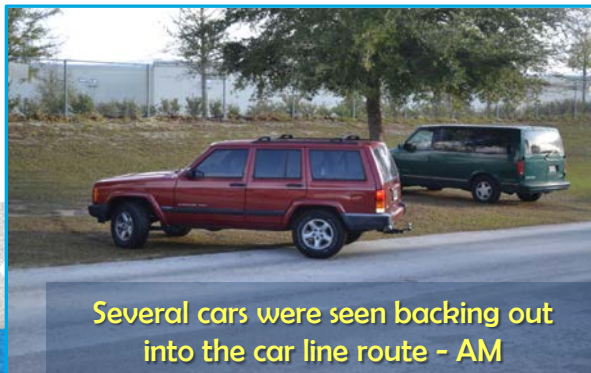
The Villages Elementary School of Lady Lake

Findings (Continued):

- ✓ Principal Dave Bordenkircher greets students in the morning and calls students names to parent's cars in the afternoon.
- ✓ Many parents observed walking their students through car line coming from adjacent remote off-site parking area north of school at the back of Best Buy, which faces US 441.

Recommendations:

- ✓ Provide new walker/bike rider's access with gate, new sidewalks allowing safe walking access to school without being forced to cross car line route.
- ✓ Consider feasibility of switching car line route to the bus loop route to lessen car line length and/or consider using other parts of school property for potential car line extension/revision.



Remote Drop-off & Pick-up and Walkers/Bikers Access

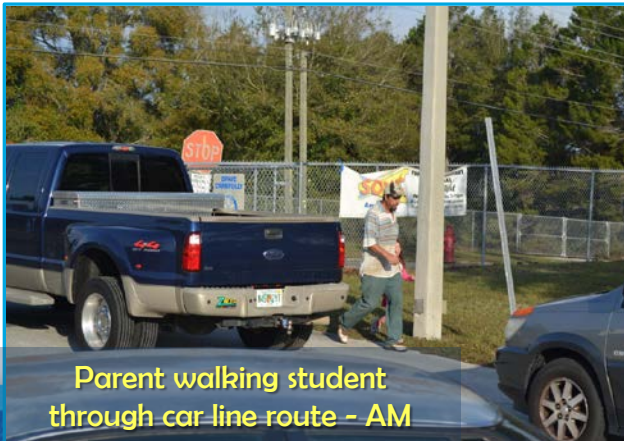
The Villages Elementary School of Lady Lake

Finding:

- ✓ Many parents observed walking their students through car line coming from adjacent remote off-site parking area north of school at the back of Best Buy, which faces US 441.

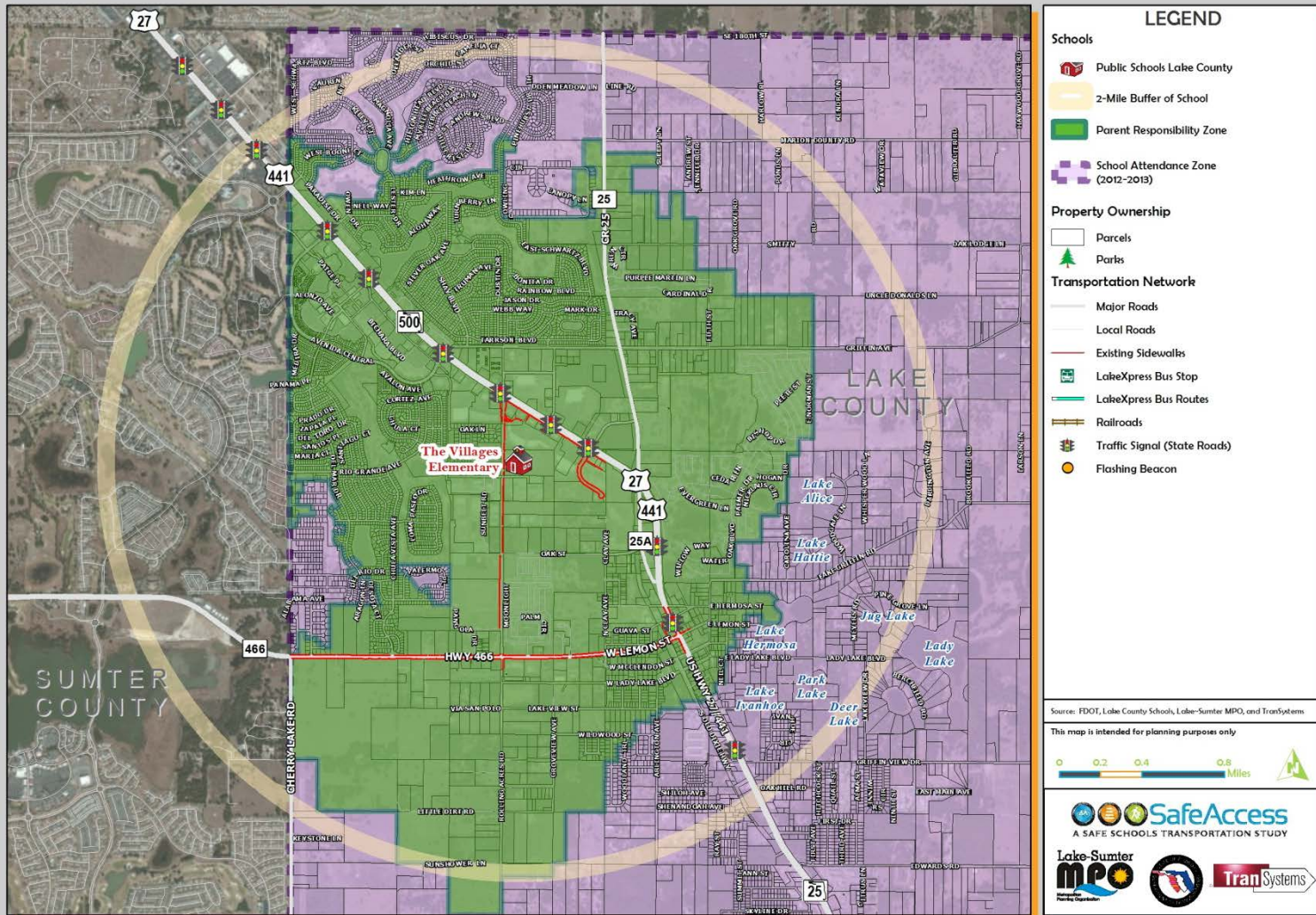
Recommendation:

- ✓ Provide new walker/bike rider's access with gate and new 5' sidewalk connectivity on-campus, thus allowing safe walking and bicycling access to school without being forced to cross car line route (See "Before/After New Walkers Access Rendering Concept" section).
- ✓ Estimated total construction cost is \$70,000.



The Villages Elementary School of Lady Lake

The Villages Elementary School: Attendance and 2-Mile "Walk" Zone Map



ON-CAMPUS RECOMMENDATION – SECTION 1 (BEFORE):



ON-CAMPUS RECOMMENDATION - SECTION 1 (AFTER):



ON-CAMPUS RECOMMENDATION - SECTION 2 (BEFORE):



ON-CAMPUS RECOMMENDATION - SECTION 2 (AFTER):



ON-CAMPUS RECOMMENDATION - SECTION 3 (BEFORE):



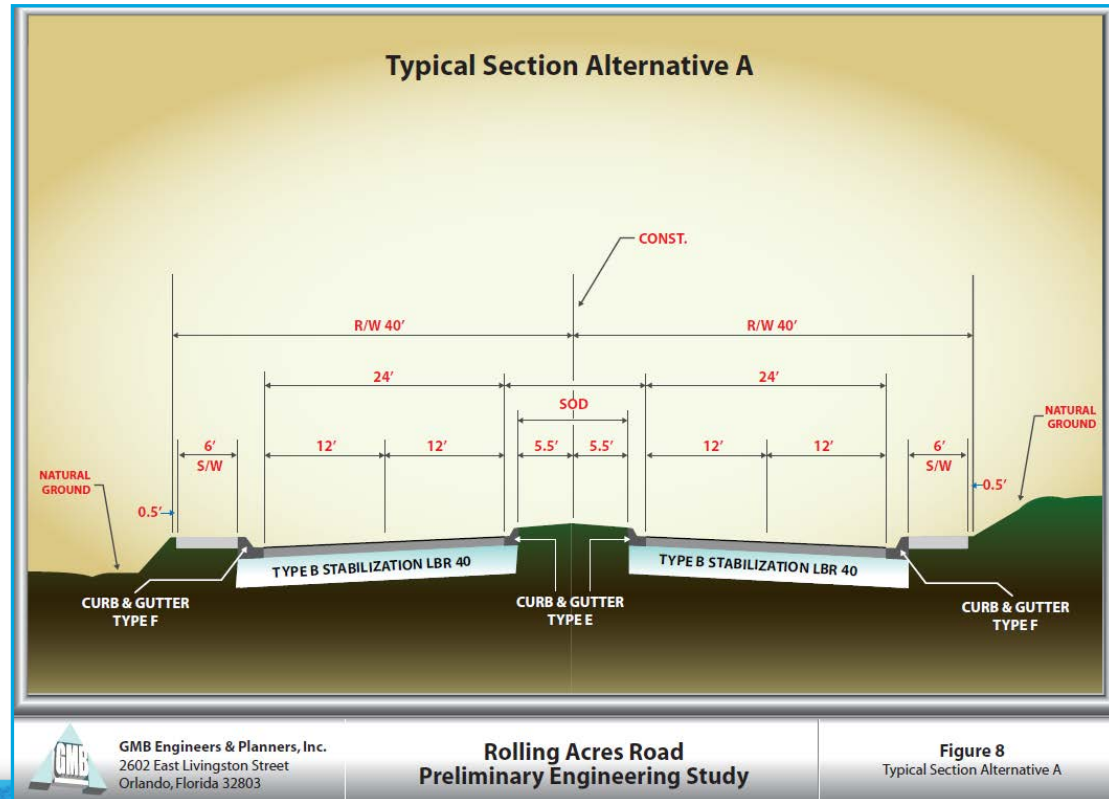
ON-CAMPUS RECOMMENDATION -- SECTION 3 (AFTER):



The Villages Elementary School of Lady Lake

Finding:

- ✓ FDOT District 5 currently is studying the feasibility of Rolling Acres Road to a 4-lane median-divided roadway (see typical section below).
- ✓ Rolling Acres Road improvement would create north/south parallel to US 27/441 and potentially alleviate congestion at U2 27/441 and Rolling Acres Road intersection.



Rolling Acres Road Phase II Sidewalk Funded SRTS Improvement

The Villages Elementary School of Lady Lake



Crosswalks and Pedestrian
Count-down signal Heads CR
25 at Griffin Avenue

Crosswalks, ADA Ramps, and
Pedestrian Count-down signal
Heads Rolling Acres Rd/US 441

530 ft 5' Sidewalk

Speed Change
Message Sign

New mid-block
pedestrian signal on
Rolling Acres Rd @
Villages ES

Villages ES

Speed Change
Message Sign

Crosswalks, ADA Ramps, and
Pedestrian Count-down signal
Heads Fennell Blvd/US 441

4,225 ft 5' Sidewalk

Recommended Potential Project Oak Rd Sidewalk

The Villages Elementary School of Lady Lake

Villages ES

Oak Rd Sidewalk would serve students living in the Clay Avenue area (connect to existing sidewalk on east side of Rolling Acres Rd)

Key Benefits:

- Would connect to planned SRTS Project on CR 25
- Serve as a short path from Clay Ave area students.

Recommendation:

- Town of Lady Lake to consider the requirements related to Right of Way (ROW) to construct 5' sidewalk on north side sidewalk

Rolling Acres Rd

Clay Ave

Oak Rd

Starlight Rd



The Villages Elementary School of Lady Lake

This project represents an ongoing commitment to increase safe access to schools within the Lake~Sumter Metropolitan Planning Organization Planning Area.

Updates to data, and suggestions for programming and project ideas are welcome from all agencies and the general public and are made possible via lakesumtersafeschool.com

Mike Woods

Project Manager, Transportation Planner

(352) 315-0170

mwoods@lakesumtermpo.com



Doug Lynch, GISP

Consultant Project Manager

(407) 875-8938

dwlynch@transystems.com



*Promoting Regional
Transportation Partnerships*