



A SAFE SCHOOLS TRANSPORTATION STUDY

Umatilla Elementary School Umatilla, FL

TranSystems



Lake-Sumter



Metropolitan
Planning Organization

July 2013

Umatilla Elementary School



K-5th Grade

Total Students: 648

- Provided Bus Transportation: 261
- Not Provided Bus Transportation: 387

Students Living in the “Walk Zone”: 277

- Provided Bus Transportation: 101
- Not Provided Bus Transportation: 176

Observation Day (Clear)

- Walker’s (estimated): 15
- Bike Riders: 5



- ✓ School website – click [here](#)
- ✓ City of Umatilla website – click [here](#)
- ✓ Lake County School District website – click [here](#)

Umatilla Elementary School



Bus Loop

Bus Student Drop-off/Pickup

Bicycle and "Walkers" Access

Student Drop-off and Pick-up

LAKE STREET

Staff and Visitor Parking

WISTERIA AVENUE

8:00 AM: Students May Arrive on Campus, Breakfast Served

8:00 AM: Students can Arrive in Classrooms]

8:35 AM: School Starts

2:55 PM: Car Riders Dismissed

3:00 Bus Riders and Walkers Dismissed

Early Dismissal Every Wednesday:

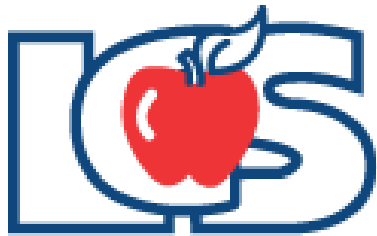
1:55 PM: Car Riders Dismissed

2:00 PM Bus Riders and Walkers Dismissed



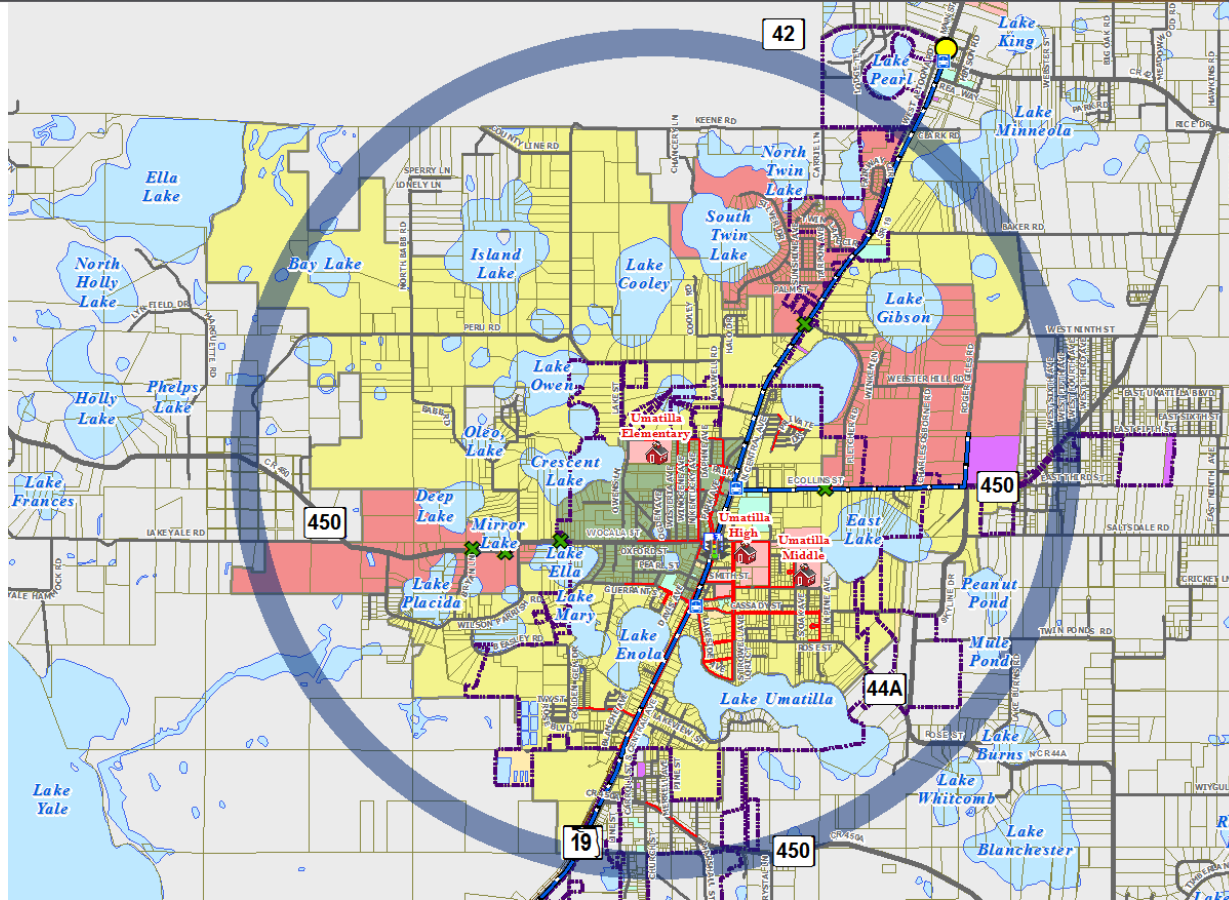
Findings:

- ✓ On June 24, 2013 the Lake County School Board voted to formally discontinue all courtesy busing for elementary and middle school students who live within the 2-mile walk zone of the school.
 - ✓ By state law, Florida provides transportation funding only for traditional education students that live two or more miles from the school. The Lake County School Board unanimously made the decision to discontinue the service as it seeks cost-cutting measures to close a \$16 million gap in for the 2013 – 2014 proposed budget.
 - ✓ This essentially makes the new parent responsibility zone equal to the 2-mile walk zone, except for schools with identified Hazardous Walking Areas.



Attendance Zone and 2-Mile "Walk" Zone Map

Umatilla Elementary School



Legend: Existing Conditions

- Phase 3 Schools Studied
- Crossing Guard Locations
 - Existing Sidewalks
 - Existing Trails
 - Suspected Hazardous Walking Condition Areas
 - No
 - Yes
 - Possible FDOE Interest
 - FDOE Interest
 - PRZ -- Suggested Infrastructure Improvements

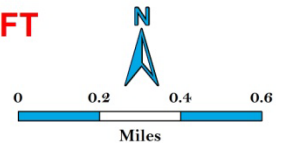
Elementary (Primary) FTE Transportation Zones -- 2012-2013
Representation: Elementary Primary FTE

- 2-Mile FDOE Walk Zone with no designations
- Approved Hazardous Walking Area
- Unapproved Hazardous Walking Area
- Parent Responsibility Zone

- Parcels
- School Property - Public
- Church Owned Property
- County Owned Property
- City Owned Property
- Water Bodies
- City Limit

- 2-Mile Buffer of Umatilla Elementary School
- Major Roads
- Local Roads
- Railroads
- Traffic Signal
- LakeXpress Bus Stops
- Route 4: Altoona to Zellwood

DRAFT



Findings:

- ✓ Signage for bus loop entrance are marked.
- ✓ Operations in the bus loop and loading/unloading works well for both arrival and dismissal times.
- ✓ Bus loop queue of 8 total are single queued in PM.
- ✓ The east side of the bus loop has a tighter than normal bus turning radius. The School has marked off grassy areas to ensure there is safe turning distance for the busses.



Umatilla Elementary School

Findings:

- ✓ School zone sign was recently replaced on the south side of Lake Street near the north end of the bus loop exit area.
- ✓ School zone paint on Lake Street is faded and needs repainting for better visibility and vehicular awareness.

Recommendation:

- ✓ Repaint faded school zone street markings along Lake Street.



New school zone signage along south side of Lake Street (west side of campus)



School Zone marking paint is faded and is in need of repainting on east side of campus on Lake Street.

Findings:

- ✓ The stop sign at the exit of the bus loop is faded and needs to be replaced.

Recommendation:

- ✓ Replaced faded stop sign



Stop sign at end of bus loop is faded and needs to be replaced

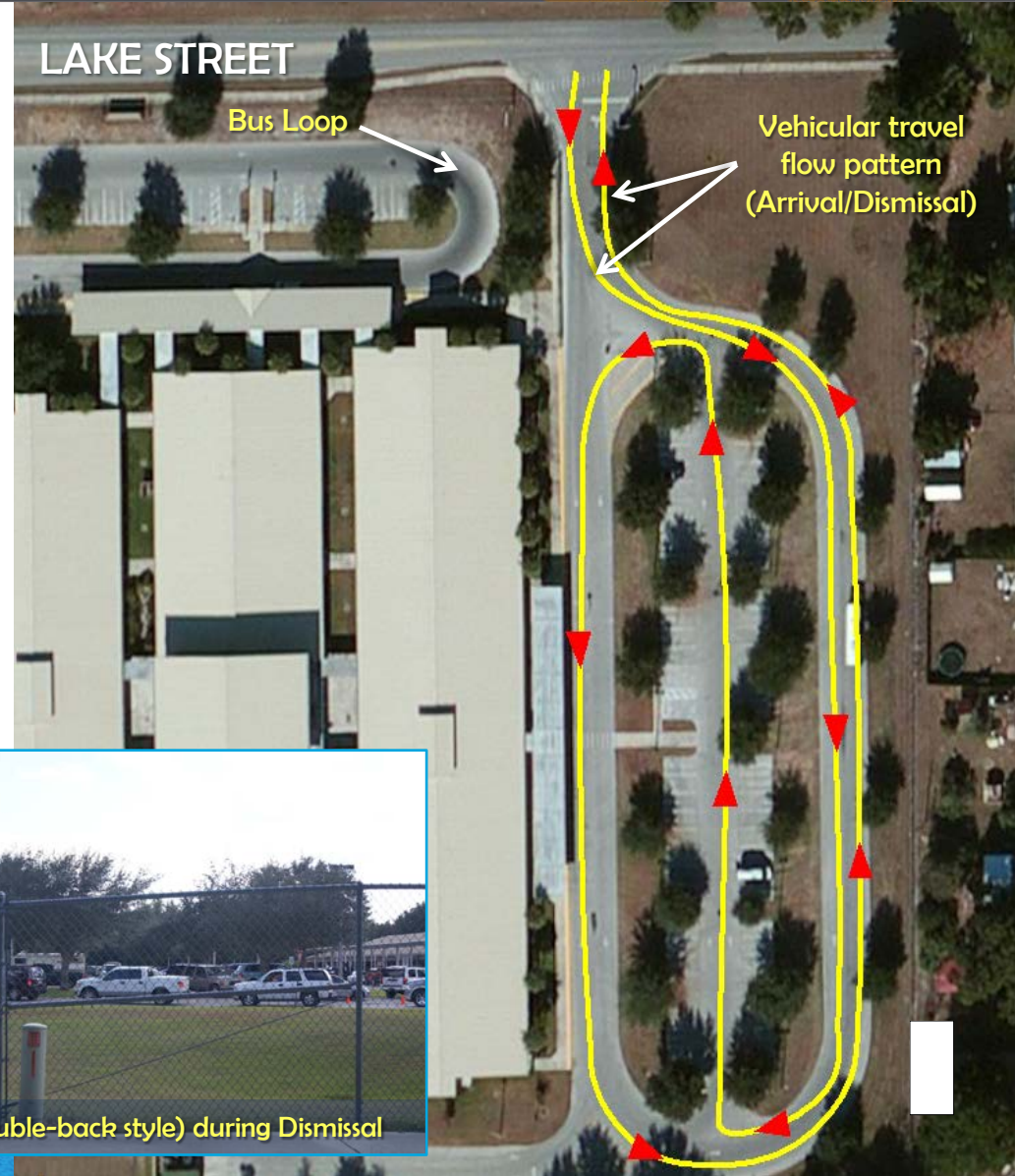
Umatilla Elementary School

Findings:

- ✓ Student Drop-off/Pick-up line accessed on Lake St.
- ✓ School has color-oriented system in the Dismissal for collecting students and guiding them to their respective cars for pick-up.
- ✓ Signage for parent pick-up and drop-off is barely visible.
- ✓ At Dismissal time, the carline produced a length of 70 cars with no queue spillage onto Lake Street observed. The carline and vehicle flow is smooth.

Recommendation:

- ✓ Install new double-sided Student Drop-off/Pick-up signage on Lake Street (north side). See Priority Project #1 for before/after improvement concept.



Umatilla Elementary School



Existing Student Pick-up/Drop-off Sign location has poor visibility for vehicles



Carline (facing north) - Dismissal



No pedestrians are allowed to cross during Arrival/Dismissal



Carline (facing south) - Dismissal

Umatilla Elementary School

Findings:

- ✓ Walkers and Bicyclists are allowed to access the school at the School's east door (by fence) near the bike racks. Asst. Principal Gagnon opens the door for the students in the morning.
- ✓ Walkers and Bicyclists are released first at 3:00 PM (2:00 PM on Wednesdays) from the school's main entrance.
- ✓ Students were observed using sidewalks. Staff collects and crosses students across Student drop-off and Pick-up entrance/exit area.



Bicycle/Pedestrian “Walkers” Access



School staff cross students safely across the Student Drop-off and Pick-up entrance/exit area during Arrival.



Students access the dedicated bicycle/pedestrian gate



School staff cross students at the pedestrian crossing in the Visitor parking lot (bus loop area)



School staff cross students at one time during Dismissal

Umatilla Elementary School

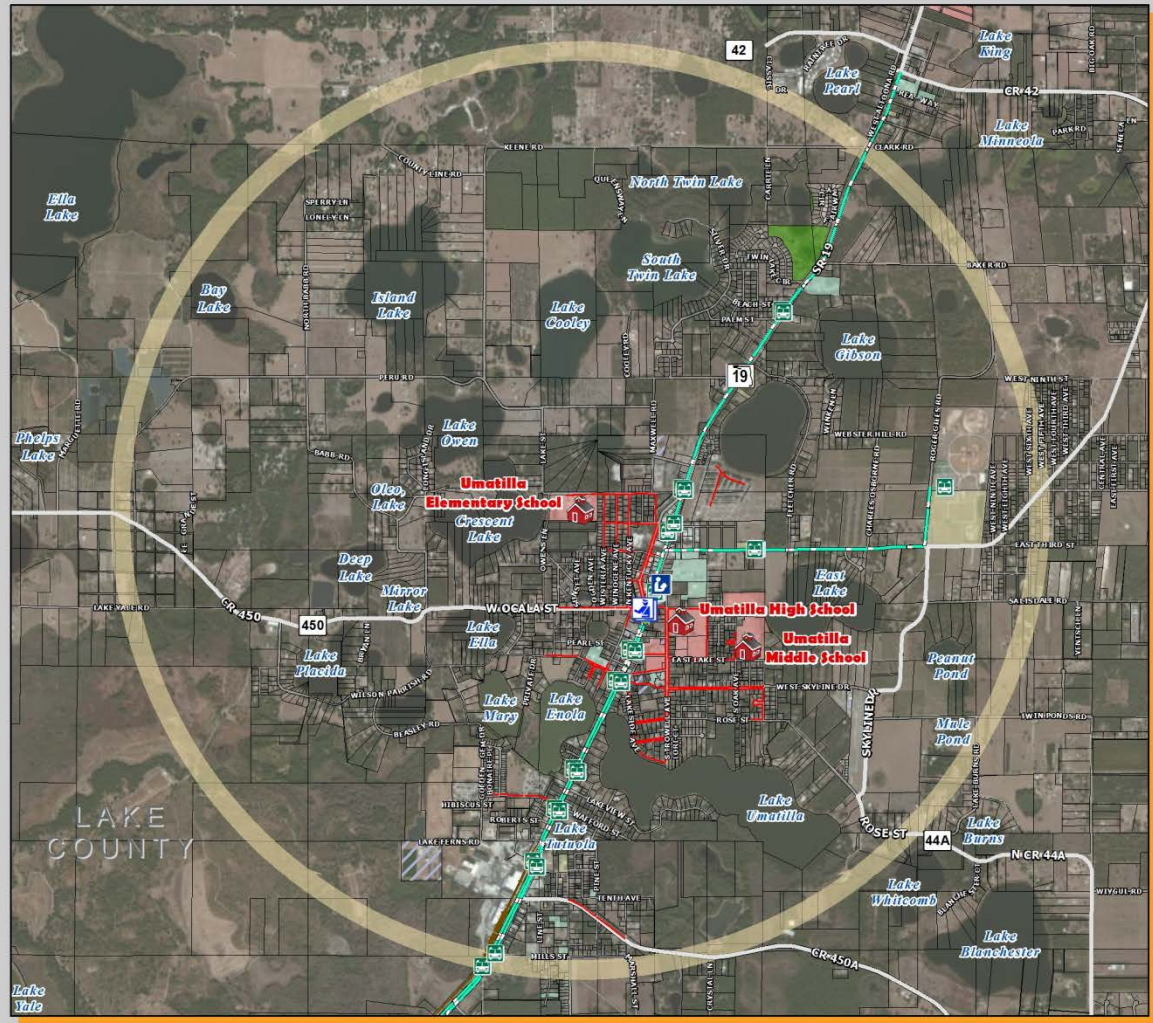
Findings:

- ✓ The School has created a “Bulldog Buck” program where these bucks can be earned by students for having exemplary conduct, etc. The school allows Bulldog bucks to go toward a purchase of a bicycle helmet, if needed by a student. The School fully supports and encourages all students who bicycle to school to wear a helmet. Student helmets are often held by the school during the day.



Umatilla Elementary School

Umatilla Elementary School: Existing Conditions Map



LEGEND

Schools

- Public Schools Lake County
- Crossing Guard Locations
- Libraries
- 2-Mile Buffer of School

Property Ownership

- Parcels
- School Property
- Lake County Owned Property
- City Owned Property
- Church Owned Property
- Golf Owned Property

Parks

- Parks

Transportation Network

- Major Roads
- Local Roads
- Existing Sidewalks
- LakeXpress Bus Stop
- LakeXpress Bus Routes
- Railroads
- Traffic Signal (State Roads)
- Flashing Beacon

Source: FDOT, Lake County Schools, Lake-Sumner MPO, and TransSystems.
This map is intended for planning purposes only.

0 0.2 0.4 0.8 Miles

SafeAccess
A SAFE SCHOOLS TRANSPORTATION STUDY

Lake-Sumner MPO
TransSystems

Umatilla Elementary School

Findings:

- ✓ The City of Umatilla is currently coordinating with the Florida DOT District 5 to install new signalized intersections and signalized crosswalks and crosswalk crossings at the following locations as previously identified in the FDOT SR 19 Corridor Study:
 - ✓ SR 19 @ Guarrant Street/Cassady Street
 - ✓ SR 19 @ CR 450E/E. Collins Street



See Recommended Projects Section of report – Blue line reflects consultant recommended sidewalk improvement



FINAL SR 19 Corridor Study

January 2011

Prepared by:

HNTB
HNTB Corporation
300 Primera Boulevard
Suite 200
Lake Mary, FL 32746
(407) 805-0355

Prepared for:



Umatilla Elementary School

Findings:

- ✓ The City of Umatilla is constructing a multi-use trail that will connect from CR 450/E. Collins Street to Bulldog Lane. Construction for the trail has already begun and once completed, will serve both citizens and students of Umatilla Elementary, Umatilla Middle, and Umatilla High School's alike. The 2009 SR 19 Corridor Study identified the needed improvements.



Recommended Project List

Project Description	SAS Priority Project #	On/Off Campus
Ocala Street 5' sidewalk (south side) from Kentucky Ave to existing sidewalk at SR 19 crossing with ADA improvements	1	Off Campus
Bulldog Lane 5 ' sidewalk (south side) from existing sidewalk to Trowell Avenue with ADA compliant crosswalks.	2	Off Campus
Install Student Pick-Up and Drop-off Pole/Sign (double-sided) on Lake Street across from entrance to existing Student Pick-up and Drop-off vehicular entrance.	N/A	Off Campus



Recommended Project #1

Ocala St. Sidewalk (South Side)

Recommendation:

- ✓ Construct 5' sidewalk on the south side of Ocala Street from Kentucky Ave to existing SR 19 crosswalk – including ADA compliant curb ramps.
- ✓ Project would serve Umatilla Middle School, Umatilla High School, and Umatilla Elementary School students.



Recommended Project #1 Ocala St. Sidewalk (South Side)

- ✓ Add sidewalk from Kentucky Ave to existing signalized crosswalk.

BEFORE:



Recommended Project #1 Ocala St. Sidewalk (South Side)

- ✓ Add sidewalk from Kentucky Ave to existing signalized crosswalk.

AFTER:



Recommended Project #2 Bulldog Ln. Sidewalk (South Side)

Recommendation:

- ✓ Construct 5' sidewalk on the south side of Bulldog Lane from existing sidewalk to Trowell Avenue including crosswalk signage and markings with ADA curb ramps.
- ✓ Project would serve Umatilla Middle School, Umatilla High School, and Umatilla Elementary School students.



Recommended Project #2 Bulldog Ln. Sidewalk (South Side)

- ✓ Add sidewalk from existing to Trowell Ave with added crosswalks

BEFORE:



Recommended Project #2 Bulldog Ln. Sidewalk (South Side)

- ✓ Add sidewalk from existing to Trowell Ave with added crosswalks

BEFORE:



Recommended Project #2 Bulldog Ln. Sidewalk (South Side)

- ✓ Add sidewalk from existing to Trowell Ave with added crosswalks

AFTER:



Other Recommended Project New Student Drop-off/Pick-up Sign

Findings:

- ✓ There is limited sight distance on Lake Street regarding signage to the Student drop-off and pick-up area.

Recommendation:

- ✓ Install new double-sided Student Drop-off/Pick-up signage on the north side of Lake Street. See the next few pages for Priority Project #1 before/after improvement concept.



Other Recommended Project New Student Drop-off/Pick-up Sign

BEFORE:



Other Recommended Project New Student Drop-off/Pick-up Sign

AFTER:



This website represents an ongoing commitment to increase safe access to schools within the Lake~Sumter Metropolitan Planning Organization Planning Area.

Updates to data, and suggestions for programming and project ideas are welcome from all agencies and the general public.

Mike Woods

Project Manager, Transportation Planner

(352) 315-0170

mwoods@lakesumtermpo.com



Doug Lynch, GISP

Consultant Project Manager

(407) 875-8938

dwlynch@transystems.com



*Promoting Regional
Transportation Partnerships*