

Fruitland Park Elementary School Fruitland Park, FL

March 2013



Lake-Sumter
mPO
Metropolitan
Planning Organization



Fruitland Park Elementary School Snapshot

May 16, 2012

Grades: Pre-Kindergarten – 5th

Total Students: 624

- Provided Bus Transportation : 168
- Not Provided Bus Transportation: 456
- Buses Assigned to School (3 reg, 4 ESE) 7

Students Living within the “Walk Zone”: 356

- Provided Bus Transportation: 81
- Not Provided Bus Transportation: 275

Observation Day (Overcast and Sprinkling)

- Walkers: 78
- Bike Riders: 19

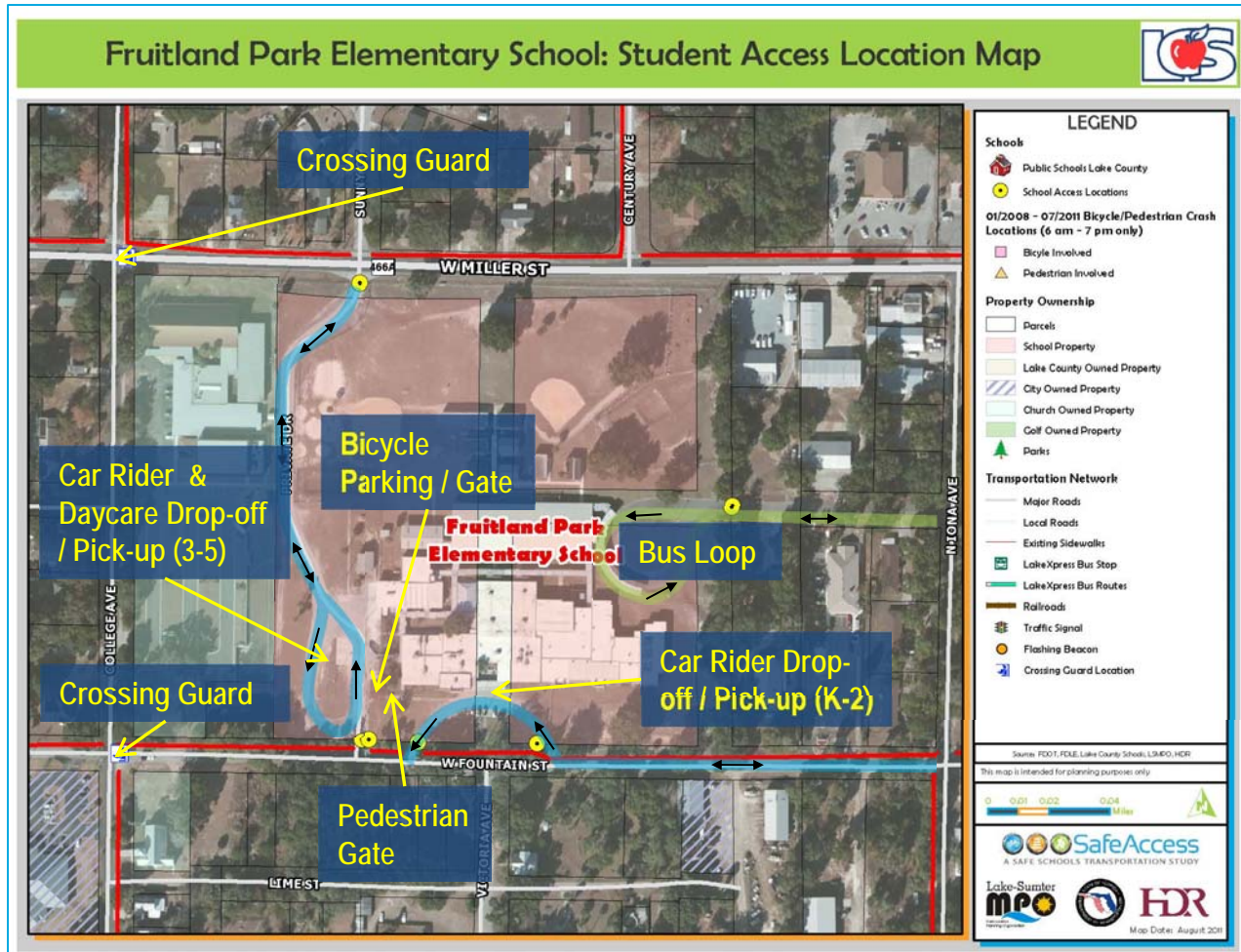


- ✓ Fruitland Park Elementary School website – Click [here](#)
- ✓ City of Fruitland Park website – Click [here](#)
- ✓ Lake County Schools website – Click [here](#)

Fruitland Park Elementary School

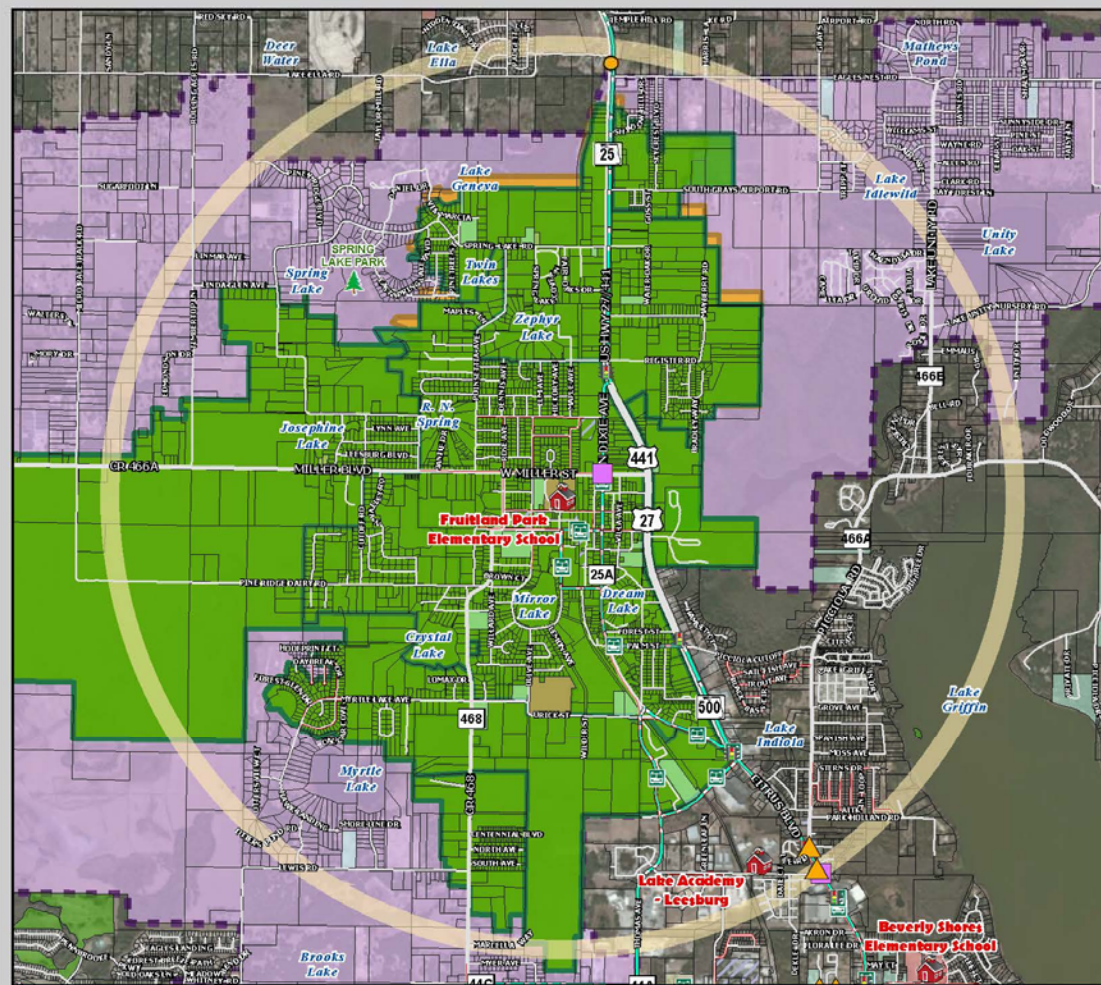
Findings:

- ✓ Large group of students walk, ride a bike, or ride a skateboard
- ✓ One-way drop-off/pick-up loops separated from bus loop
- ✓ No restrictions on where walkers / bikers must arrive onto campus; all must exit through bike gate and are held 2-3 minutes after dismissal
- ✓ Four crossing guards are stationed around the school on College Ave and Dixie Ave
- ✓ Police officer aides with traffic enforcement near the school when available



Attendance and 2-Mile "Walk" Zone Map

Fruitland Park Elementary School: Attendance and 2-Mile "Walk" Zone Map



LEGEND

Schools

- Public Schools: Lake County
- 2-Mile Buffer of Fruitland Park ES
- Parent Responsibility Zone
- Special Exception Areas
- Fruitland Park ES Attendance Zones (2010-2011)

01/2008 - 07/2011 Bicycle/Pedestrian Crash Locations (6 am - 7 pm only)

- Bicycle Involved
- Pedestrian Involved

Property Ownership

- Parcels
- Parks

Transportation Network

- Major Roads
- Local Roads
- Existing Sidewalks
- LakeXpress Bus Stop
- LakeXpress Bus Routes
- Railroads
- Traffic Signal
- Flashing Beacon

Source: FDOT, FDLE, Lake County Schools, LSUMPO, HDR

This map is intended for planning purposes only.

0 0.2 0.4 0.8 Miles

SafeAccess
A SAFE SCHOOLS TRANSPORTATION STUDY

Lake-Sumter MPO HDR
Map Date: August 2011

Arrival and Dismissal Schedule

- 6:00 am:** ELC starts (27 student signed up in the morning)
- 8:00 am:** Breakfast available; before school program begins
- 8:15 am:** Official start of car drop-off line; earlier arrivals report to cafeteria
- 8:35 am:** School start time
- 3:00 pm:** School release time
- 6:00 pm:** ELC ends (57 students signed up for afternoons)

Note: Students are released one hour early on Wednesdays





Findings:

- ✓ The bus loop operations, and loading and unloading work well
- ✓ Adequate storage is provided on-site for all 7 buses (3 regular, 4 ESE)
- ✓ One bus does a double drop-off in the morning; no double pick-up in the afternoon
- ✓ Daycare buses operate at the grades 3-5 pick-up / drop-off area



A SAFE SCHOOLS TRANSPORTATION STUDY

Fruitland Park Elementary School

Student Drop-off & Pick-up Grades K - 2

Findings:

- ✓ Grades K-2 arrive / depart from the front of the school
- ✓ Vehicles didn't start to queue until about 15 minutes before school ended
- ✓ Vehicles enter K-2 pick-up / drop-off from westbound Fountain St and make a right turn into the school
- ✓ Pick-up / drop-off area is not well defined for K-2; vehicles did not always move down the ramp to make space
- ✓ Parking spaces are located directly across from pick-up / drop-off lane
- ✓ A bar separates students from the vehicle lane; students must exit / enter a vehicle at either end
- ✓ A stop sign is missing at the end of the car loop at Fountain St



Grades K-2 Pick-up Queue



Grades K-2 Pick-up / Drop-off



A SAFE SCHOOLS TRANSPORTATION STUDY

Fruitland Park Elementary School

Student Drop-off & Pick-up Grades K - 2



Recommendations:

- ✓ Short-term: Install gates and fencing along existing car loop as shown
 - ✓ Loading ramp is approximately 56 feet; can load 3 cars at a time
- ✓ Long-term: Construct a raised sidewalk with curb as indicated on the aerial
 - ✓ Would connect the existing sidewalk with the ramp
 - ✓ Creates a clearly defined pick-up / drop-off ramp
- ✓ Install stop sign at car loop exit

Student Drop-off & Pick-up Grades K - 2



Recommendations:

- ✓ School recently improved front parking area, but not student drop-off / pick-up (since observations)
- ✓ Long-term: Redesign parking lot to separate vehicle lanes from parking spaces or remove parking from existing location and build a new lot within fenced area
 - ✓ Would improve safety by preventing vehicles to park directly from the pick-up / drop-off lane



A SAFE SCHOOLS TRANSPORTATION STUDY

Fruitland Park Elementary School

Student Drop-off & Pick-up

Grades 3 - 5

Findings:

- ✓ Grades 3-5 arrive / depart from a private access off Miller St; it is missing a stop sign
- ✓ Students access and leave the campus from a single gate in the fence; cones and staff are placed along gate to keep students from running into vehicle lane
- ✓ School staff parks at this pick-up / drop-off location; parking lot is too small and vehicles have to use the grass
- ✓ No storage issues were observed; no queue back up observed on Miller St
- ✓ An exit gate is located on the Fountain St side of the car loop and is used for after school assemblies; it is missing a stop sign



Grades 3-5 Pick-up



Grades 3-5 Student Gate



Private Dr. Entrance to 3-5 Pick-up



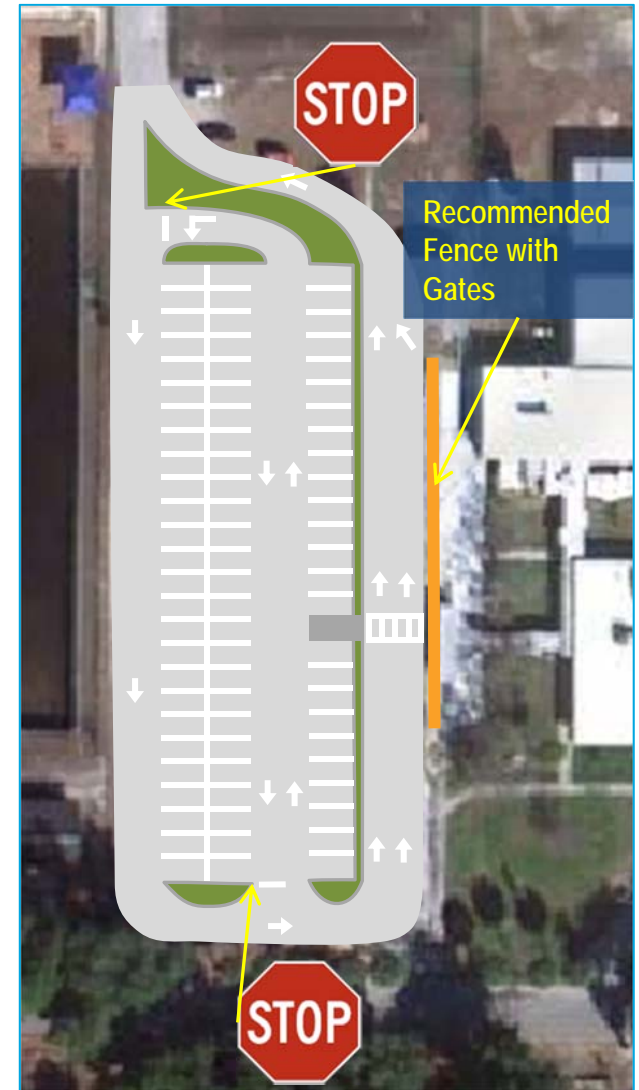
Faculty Parking

Student Drop-off & Pick-up

Grades 3 - 5

Recommendations:

- ✓ Short-term: Install gates along fence at car-lengths apart
 - ✓ Students will go straight from the waiting area to the vehicle
 - ✓ Staff will not need to stand outside gated area
- ✓ Long-term: Redesign parking area to accommodate more vehicles; include handicap parking consistent with ADA requirements



Findings:

- ✓ Parents were observed to park on grass or in parking spots at the K-2 car loop and have their students run through car line
- ✓ According to school staff, there is some remote drop-off/pick-up at a nearby church

Recommendations:

- ✓ Release walkers last; doing so may discourage remote pick-up if drivers have to wait for their students anyway

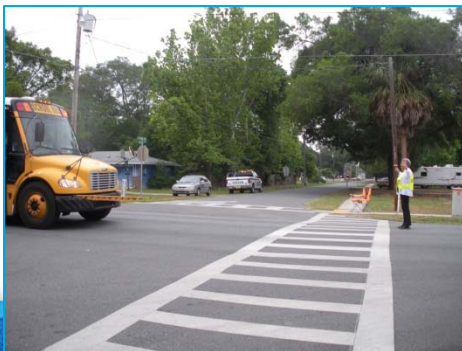


Remote Student Pick-up on K-2 Car Loop

Findings:



- ✓ Several students walk / ride bikes down Victoria Ave; a teacher will cross students across Fountain St in the afternoon
- ✓ Walkers from the southeast are supposed to use Iona Ave to access Fountain St
- ✓ Bicycles overflowed the available bike rack; most bikes had a helmet with the bike (or observed on the bicyclist), the bicycle parking is the older “wheel bender” style
- ✓ A middle school bus stop is located at the crossing guard location at Miller St and College Ave
- ✓ Cones are placed in the street at some crossing guard locations





Missing Crosswalk & Detectable Warning Mat



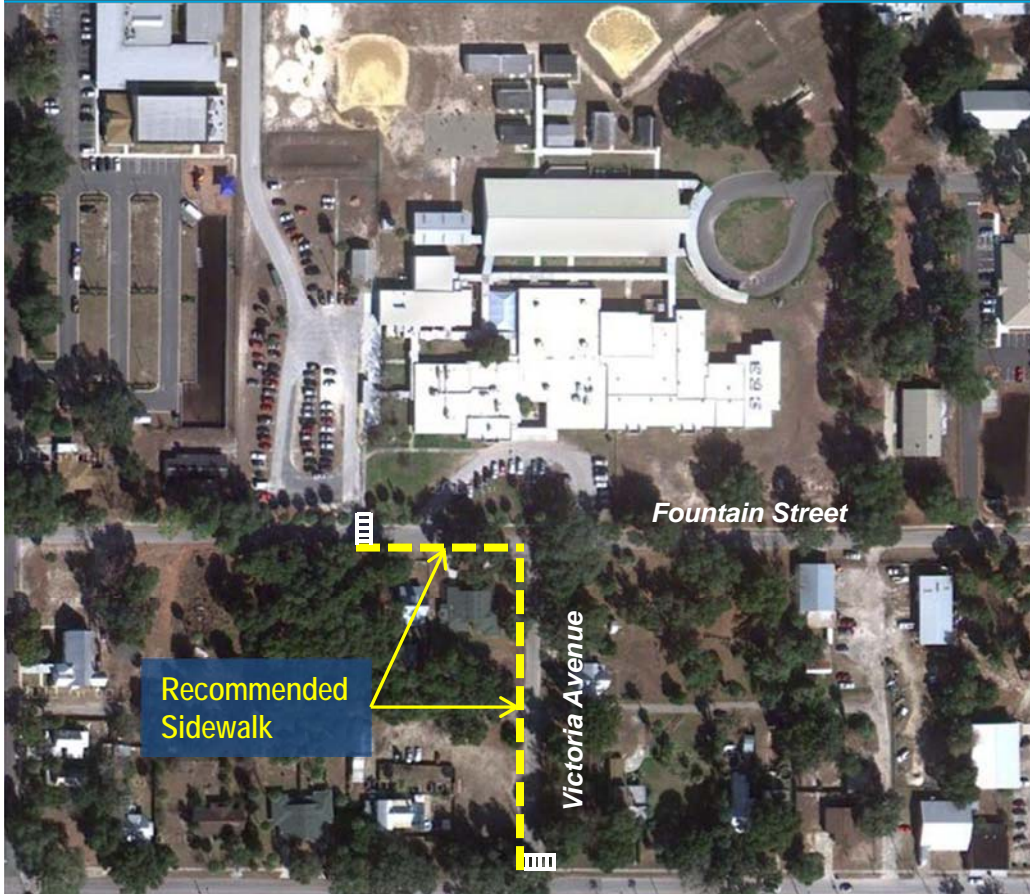
Vehicle Parked on Sidewalk

Findings:

- ✓ School cafeteria service donates two bikes per school year for a student bicycle raffle
- ✓ Crosswalks near the school were noted to be faded and in need of new paint or missing altogether; some sidewalk ramps were missing detectable warning mats
- ✓ There are several locations around the school where vehicles are parking in the grass immediately adjacent to the sidewalk or on top of the sidewalk



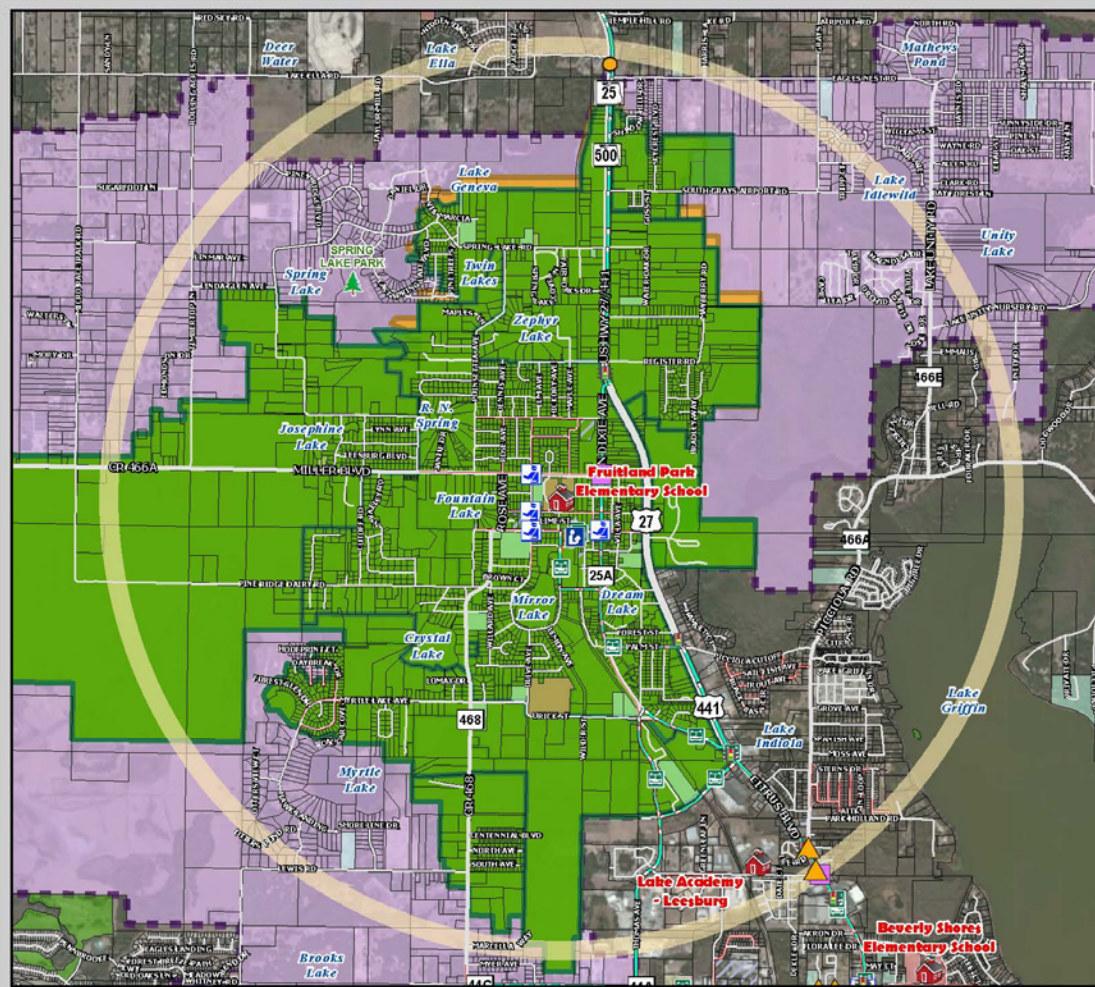
Faded Crosswalk at Dixie / Berckman Intersection



Recommendations:

- ✓ School desires a sidewalk from school down Victoria Ave
 - ✓ Include crosswalks where a teacher crosses students on Fountain St and at the southern end of Victoria Ave
- ✓ Paint or repaint crosswalks near the school
- ✓ Install detectable warning mats where missing at sidewalk ramps

Fruitland Park Elementary School: Existing Conditions Map

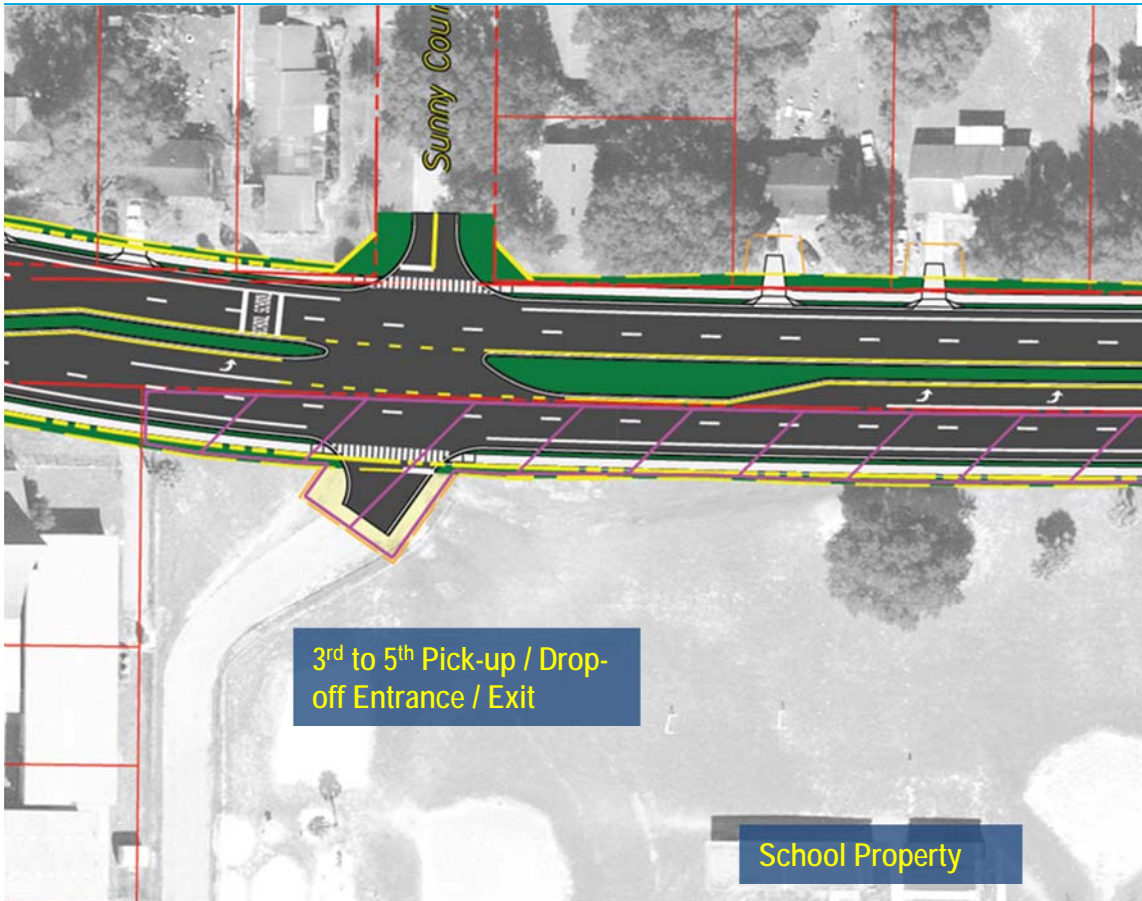


- Schools**
- Public Schools Lake County
 - Crossing Guard Locations
 - Libraries
 - 2-Mile Buffer of Fruitland Park ES
 - Parent Responsibility Zone
 - Special Exception Areas
 - Fruitland Park ES Attendance Zones (2010-2011)
- 01/2008 - 07/2011 Bicycle/Pedestrian Crash Locations (6 am - 7 pm only)**
- Bicycle Involved
 - Pedestrian Involved
- Property Ownership**
- Parcels
 - School Property
 - Lake County Owned Property
 - City Owned Property
 - Church Owned Property
 - Golf Owned Property
 - Parks
- Transportation Network**
- Major Roads
 - Local Roads
 - Existing Sidewalks
 - Existing Trails
 - Lake Xpress Bus Routes & Stops
 - Railroads
 - Traffic Signal
 - Flashing Beacon

Source: FDO I, FOLE, Lake County Schools, LCMPO, HDR

This map is intended for planning purposes only.





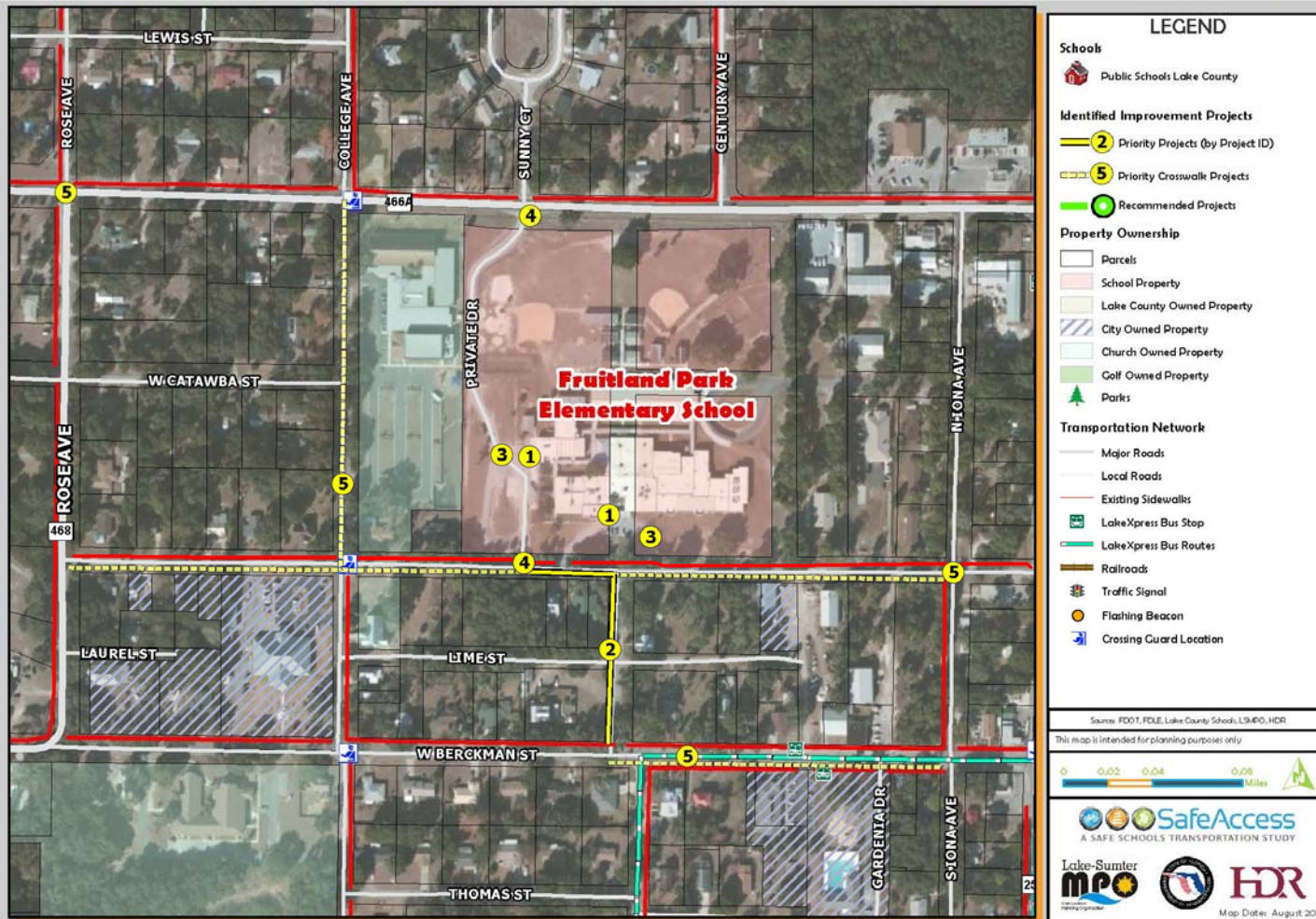
Findings:

- ✓ Lake County Project to widen CR 466A Miller St to 4 lanes from the County Line to US 27
- ✓ Funded in fiscal years 2013 and 2014 for ROW, Construction not in 5 year TIP
- ✓ Involves taking property at schools north side
- ✓ Does not include left or right turn lane into 3rd – 5th pick-up / drop-off entrance
- ✓ Right turn lane would be restricted based on location of adjacent church building

Recommendations:

- ✓ Coordinate with Lake County to add left turn lane in median or signage prohibiting turning movements into or out of school as needed

Fruitland Park Elementary School: Priority Projects



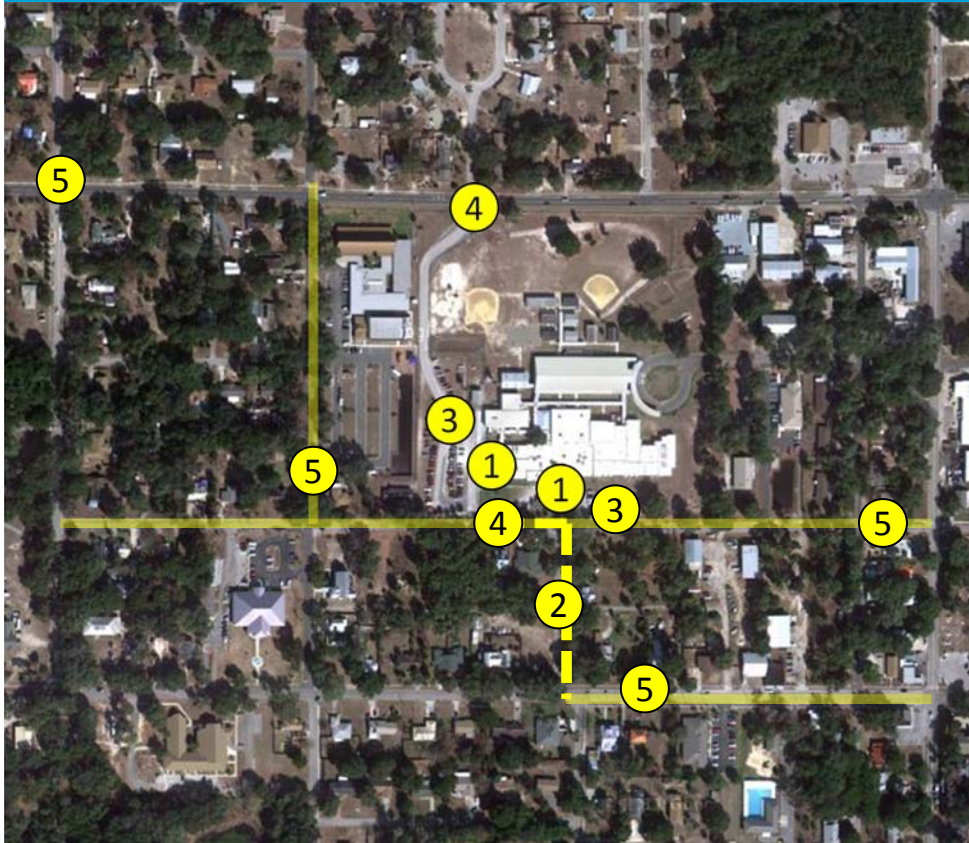


SafeAccess

A SAFE SCHOOLS TRANSPORTATION STUDY

Fruitland Park Elementary School

Recommended Priority Projects



Priority Projects:

1. Install fencing with gates on car loops (short-term); construct raised sidewalks with connections to existing sidewalks
2. Construct a new sidewalk on Victoria Ave and Fountain St
3. Redesign parking lots for additional capacity and on-site car line storage
4. Install or replace stop signs at car loops, update older school zone signs with beacons and remove or relocate crosswalk signs to crosswalk areas
5. Replace / install crosswalks and detectable warning mats on sidewalk ramps

Priority Project #1

Safety Improvements at K-2 pick-up / drop-off area



Grades K-2 Pick-up / Drop-off

Findings:

- ✓ Pick-up / drop-off area is not well defined for K-2; vehicles did not always move down the ramp to make space
- ✓ Parking spaces are located directly across from pick-up / drop-off lane
- ✓ A bar separates students from the vehicle lane; students must exit / enter a vehicle at either end

Recommendations:

1. Install fencing with gates on car loops (short-term); construct raised sidewalks with connections to existing sidewalks (long term)



A SAFE SCHOOLS TRANSPORTATION STUDY

Fruitland Park Elementary School

Priority Project #2

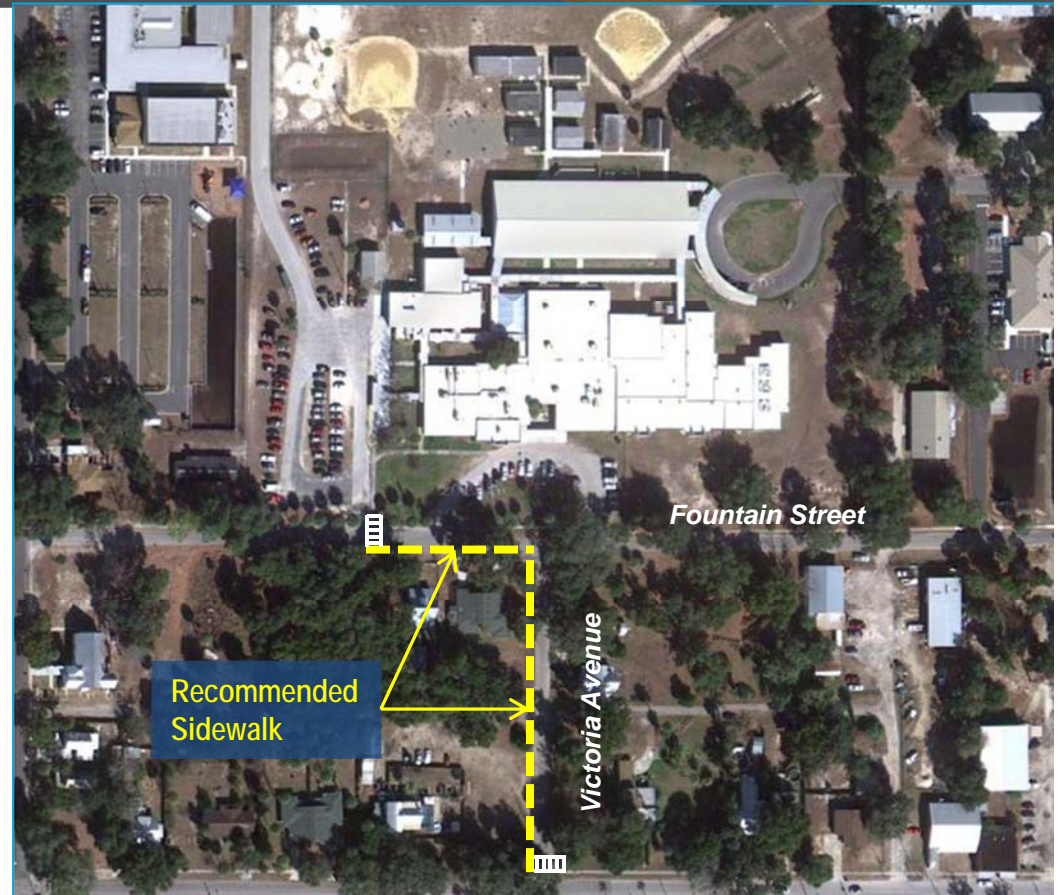
New Sidewalk on Victoria Ave and Fountain St

Findings:

- ✓ Several students walk / ride bikes down Victoria Ave; a teacher will cross students across Fountain St in the afternoon
- ✓ Walkers from the southeast are supposed to use Iona Ave to access Fountain St

Recommendations:

- ✓ School desires a sidewalk from school down Victoria Ave
 - ✓ Include crosswalks where a teacher crosses students on Fountain St and at the southern end of Victoria Ave
- ✓ Paint or repaint crosswalks near the school
- ✓ Install detectable warning mats where missing at sidewalk ramps



Priority Project #3

Redesign parking lot for additional capacity

Findings:

- ✓ Pick-up / drop-off area is not well defined for K-2; vehicles did not always move down the ramp to make space
- ✓ Parking spaces are located directly across from pick-up / drop-off lane
- ✓ This area is used as a 'remote' drop-off for the 3 - 5
- ✓ Queuing was observed to extend down Fountain St past Iona Ave
- ✓ School recently improved front parking area, but not student drop-off / pick-up (since observations)



Recommendations:

- ✓ Long-term: Redesign parking lot to separate vehicle lanes from parking spaces or remove parking from existing location and build a new lot within fenced area

Findings:

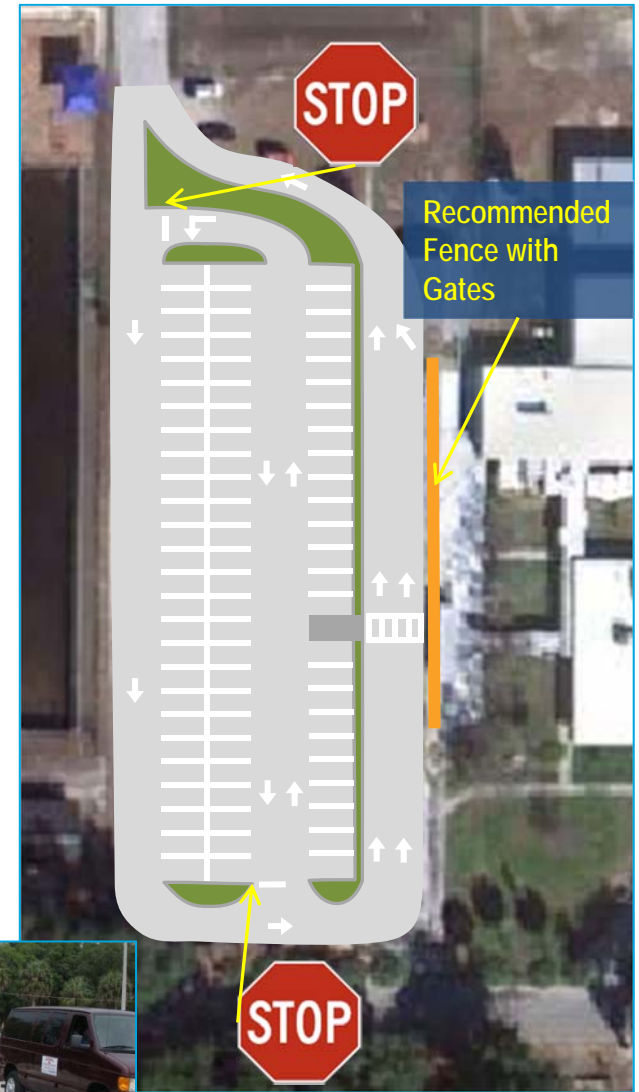
- ✓ Students access and leave the campus from a single gate in the fence; cones and staff are placed along gate to keep students from running into vehicle lane
- ✓ School staff parks at this pick-up / drop-off location; parking lot is too small and vehicles have to use the grass
- ✓ Drainage issues were reported in this parking area

Recommendations:

- ✓ Short-term: Install gates along fence at car-lengths apart
- ✓ Long-term: Redesign parking area to accommodate more vehicles; include handicap parking consistent with ADA requirements



Pick-up / Drop-off Gates Example



Findings:

- ✓ Both of the car rider drop-off / pick-up areas are missing stop signs, or the signs are very faded
- ✓ Some of the school zone signs are older, without flashing beacons with smaller text that may be harder for some drivers to see

Recommendations:

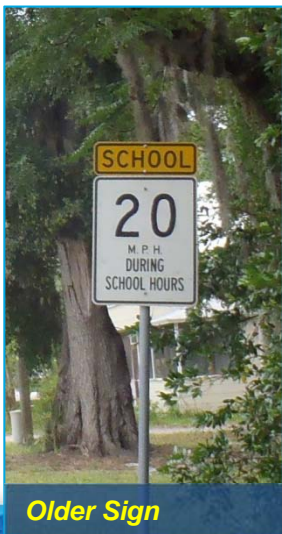
- ✓ Install stop signs at exits
- ✓ Update the school zone sign to include a flashing beacon



Faded Sign



Missing Sign



Older Sign



Older Sign on College Ave (same style on Fountain and Berckman Sts)



Recommended Sign



A SAFE SCHOOLS TRANSPORTATION STUDY

Fruitland Park Elementary School

Priority Project #5

Improve Bicycle Parking and Restore Crosswalks

Findings:

- ✓ Bicycle parking is insufficient and is of an older style
- ✓ Several of the crosswalks near the school are faded, missing or are missing detectable warning mats

Recommendations:

- ✓ Install additional bicycle parking, replace existing parking with inverted U style parking that will support bicycles at multiple points
- ✓ Update all crosswalks to high visibility ladder style crosswalks with detectable warning mats



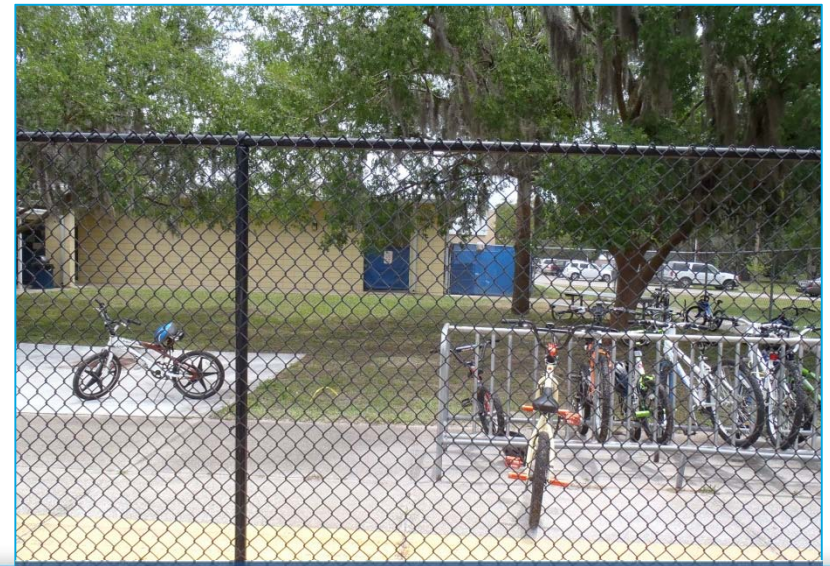
Recommended "Inverted U" Style Parking



Missing Crosswalk on College Ave



Missing Crosswalk at K-2 Carloop Exit



Existing Bicycle Parking and Overflow



A SAFE SCHOOLS TRANSPORTATION STUDY

Fruitland Park Elementary School

Cost Estimates For Priority Projects

Priority #	Item	Quantity	Units	Total
1	Sidewalk (long term recommendation, does not include fencing)	95	ft	\$25,000.00
2	Sidewalk	600	ft	\$69,800.00
2	Crosswalks (2)	48	ft	\$107.00
4	Stop Sign	3	Signs	\$900.00
4	Sign With Beacon	2	Signs	\$1,000.00
5	Crosswalks (30)	1012	ft	\$2,259.00
5	Detectable Pads	49	Pads	\$17,150.00

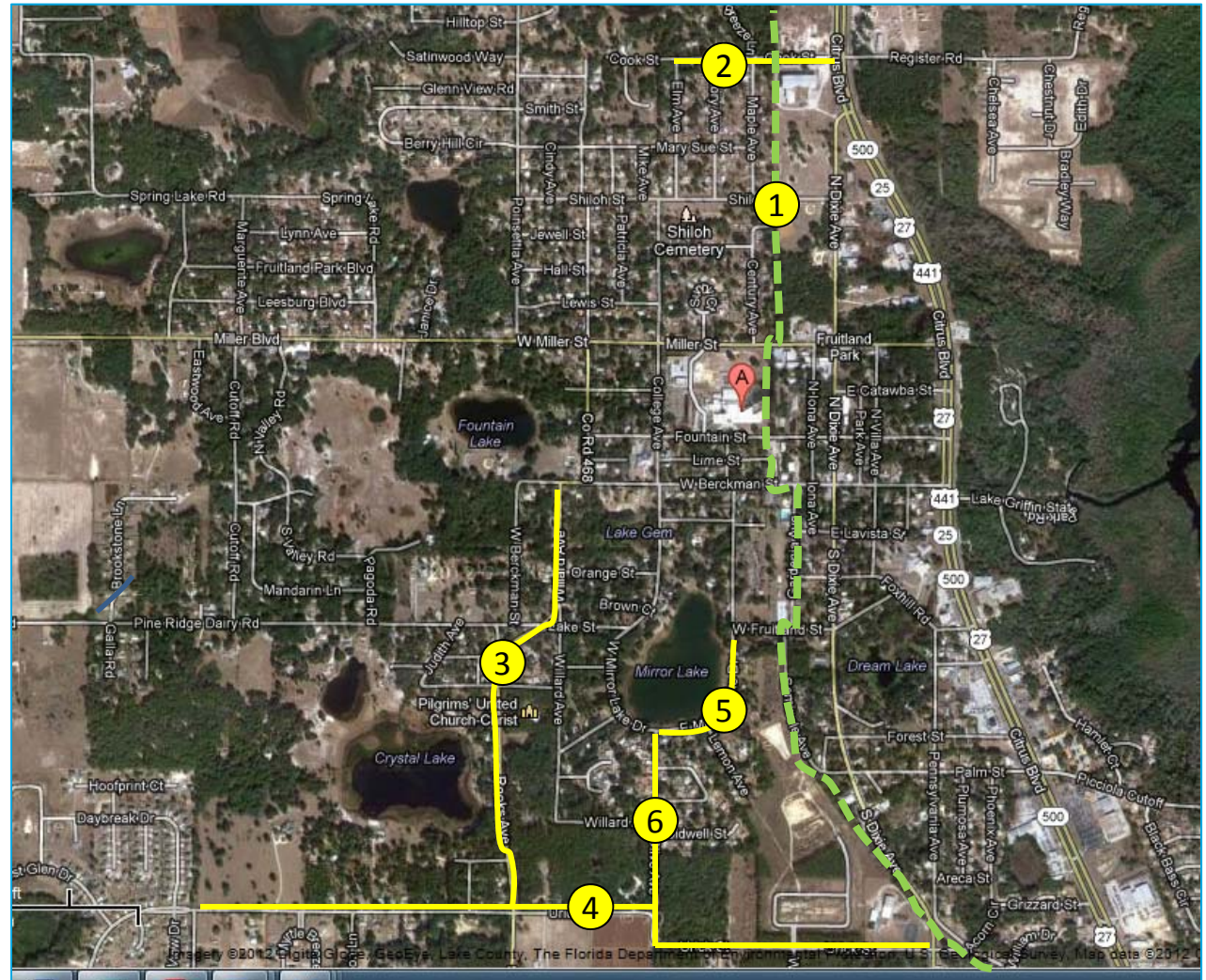
ESTIMATE BASIS AND ASSUMPTIONS:

- Sidewalk estimates based on estimating tool developed for Phase 1, Estimates for all other improvements based on Unit Costs per FDOT Lake County (Area 7) averages (07/2011 - 06/2012).
- Estimate does not include design costs, CEI costs, or utility relocation costs, utility relocation assumed by others.
- The mobilization costs are based on 15% of the construction cost and estimates include maintenance of traffic costs (15% of construction costs).
- Regular excavation & embankment to 1 ft depth is assumed
- No R/W costs included
- No specialized landscaping (beyond sodding) is included.
- Sidewalk is assumed to be 5 feet wide, unit given is in linear feet.

Fruitland Park Elementary School

Other Projects:

1. Completion of Gardenia Tr
2. Construct sidewalk on Cook St from US 441 to Elm Ave
3. Construct sidewalk on Willard Ave / CR 468 from Berckman St to Urick St
4. Construct sidewalk on Urick St from S. Dixie Ave to Calcar Cove (partially complete)
5. Construct Sidewalk on E. Mirror Lake Dr from E. Fruitland St to Olive Ave
6. Construct sidewalk on Olive Ave from Urick St to E. Mirror Lake Dr





Fruitland Park Elementary School

Contact Information

This website represents an ongoing commitment to increase safe access to schools within the Lake~Sumter Metropolitan Planning Organization Planning Area.

Updates to data, and suggestions for programming and project ideas are welcome from all agencies and the general public.

Mike Woods

Project Manager, Transportation Planner

(352) 315-0170

mwoods@lakesumtermpo.com



Mindy Heath, AICP

Consultant Project Manager

(407) 420-4200

mindy.heath@hdrinc.com



*Promoting Regional
Transportation Partnerships*