

# Minneola Elementary Charter School

Minneola, FL

August 2012

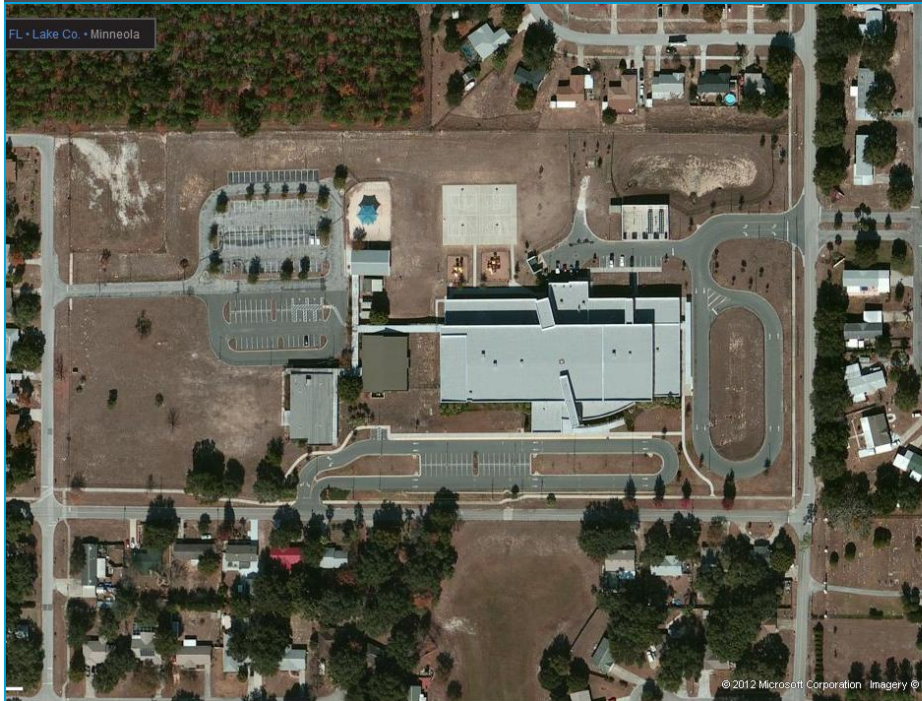
HDR

Lake-Sumter  
**mPO**  
Metropolitan  
Planning Organization



# Minneola Elementary Charter School Snapshot

## Minneola Elementary Charter School



December 13, 2011

Grades: Pre-Kindergarten – 5<sup>th</sup>

Total Students: 933

- Provided Bus Transportation: 382
- Not Provided Bus Transportation: 551

Students Living within the “Walk Zone”: 464

- Provided Bus Transportation: 205
- Not Provided Bus Transportation: 259

Observation Day (Partly Cloudy)

- Walkers: 20 (est)
- Bike Riders: 3

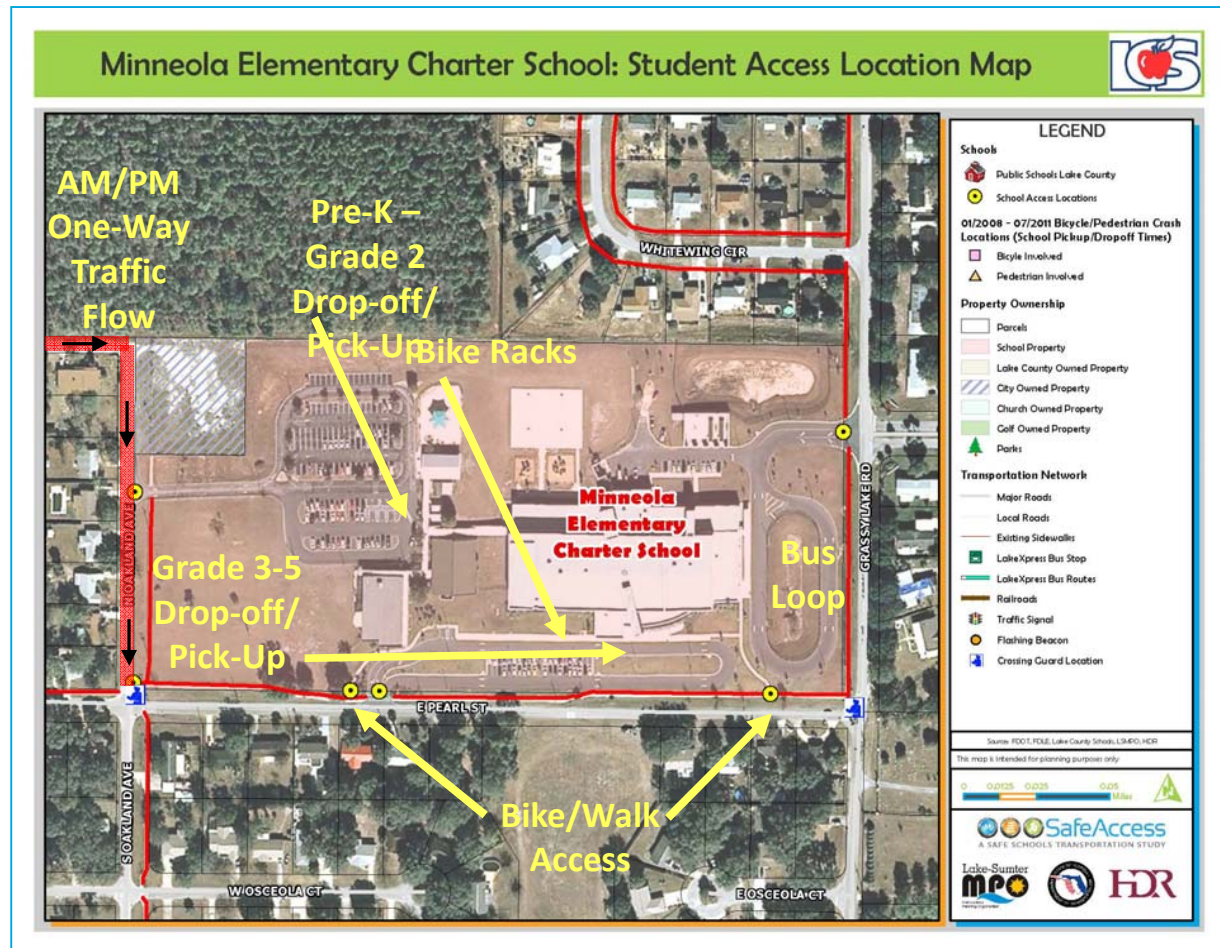


- ✓ Minneola Charter Elementary School website – Click [here](#)
- ✓ City of Minneola website – Click [here](#)
- ✓ Lake County Schools website – Click [here](#)

## Minneola Elementary Charter School

### Findings:

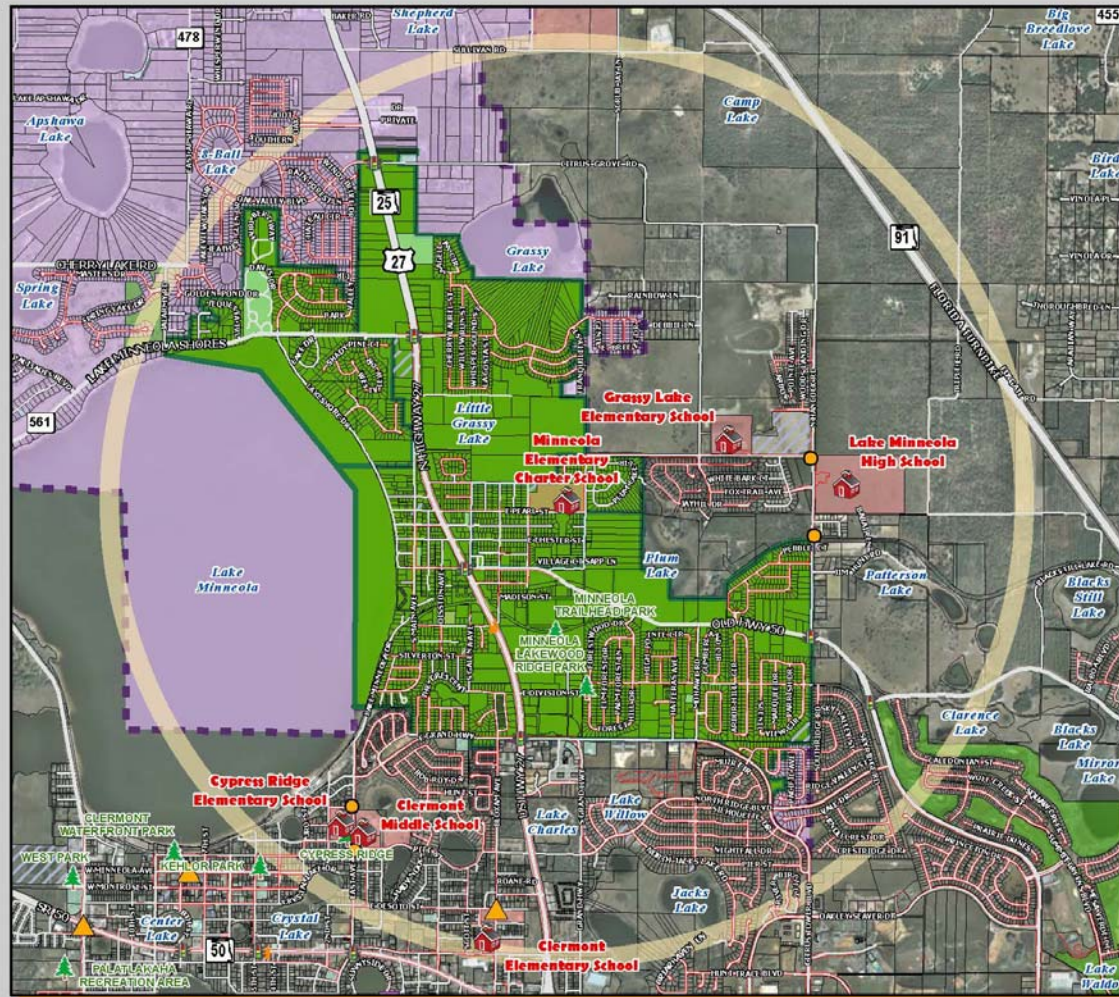
- ✓ School is a conversion charter school
- ✓ Students in preference area can opt to go to Grassy Lake ES instead
- ✓ 128 choice students live outside school zone – all car riders
- ✓ Two drop-off/pick-up loops separated from bus loop
- ✓ One-way traffic flow on Minneola St (EB) & Oakland Ave (SB) adjacent to school in AM/PM
- ✓ Bike/walk access on each side of front drop-off/pick-up loop
- ✓ Crossing guards located at Grassy Lake Rd/Pearl St & Oakland Ave/Pearl St





# Attendance and 2-Mile "Walk" Zone Map

## Minneola Elementary Charter School: Attendance and 2-Mile "Walk" Zone Map



**LEGEND**

**Schools**

- Public Schools Lake County
- 2-Mile Buffer of Minneola ECS
- Parent Responsibility Zone
- Special Exception Areas
- Minneola ECS Attendance Zones (2010-2011)

**01/2008 - 07/2011 Bicycle/Pedestrian Crash Locations (School Pickup/Dropoff Times)**

- Bicycle Involved
- Pedestrian Involved

**Property Ownership**

- Parcels
- Parks

**Transportation Network**

- Major Roads
- Local Roads
- Existing Sidewalks
- LakeXpress Bus Stop
- LakeXpress Bus Routes
- Railroads
- Traffic Signal
- Flashing Beacon

Source: PDOT, FDLE, Lake County Schools, LSMPO, HDR

This map is intended for planning purposes only.

0 0.2 0.4 0.8 Miles

SafeAccess  
A SAFE SCHOOLS TRANSPORTATION STUDY

Lake-Sumter  
MPO

HDR

## Minneola Elementary Charter School

- 7:00 am:** Extended learning care (ELC) program begins
- 8:00 am:** Pre-K school start time; breakfast start time; supervised car line starts
- 8:30 am:** K-5 school start time
- 2:55 pm:** School release time
- 3:15-3:30 pm:** Typical completion of activity at pick-up loops
- 3:00-6:00 pm:** ELC (average 125-150 students per day)

*Note: Students are released one hour early on Wednesdays*







**SafeAccess**

A SAFE SCHOOLS TRANSPORTATION STUDY

## Minneola Elementary Charter School

# Bus Access



### Findings:

- ✓ Bus access is provided from Grassy Lake Rd
- ✓ The bus loop operations, and loading and unloading work well
- ✓ Adequate storage is provided on-site for all 17 buses (13 regular, 4 ESE) & 13 day care buses
- ✓ Nine buses jointly serve Minneola ECS & Grassy Lake ES
- ✓ Buses are often delayed due to serving Lake Minneola HS
- ✓ Students living west of US 27 and south of Old Hwy 50 are bused; this is an issue every year

## Minneola Elementary Charter School

### Findings:

- ✓ Front car loop off Pearl St serves Grades 3-5 (& younger siblings)
  - ✓ School staff (3 teachers) & students provide curbside door-opening valet (AM begins at 8:00)
  - ✓ Cones used to narrow drop-off/pick-up area to one lane
  - ✓ Only minor queuing onto Pearl St in AM
  - ✓ Maximum observed queues on Pearl St in PM: 17 vehicles eastbound (backed up just beyond Oakland Ave) & 12 vehicles westbound
  - ✓ Through vehicle passing maneuvers on Pearl St are dangerous due to potential conflicting movements & limited sight distance





## Minneola Elementary Charter School

### Findings:

- ✓ Back car loop off Oakland Ave serves Pre-K – Grade 2
  - ✓ Queuing for back loop only permitted on eastbound Minneola St and southbound Oakland Ave (SB) adjacent to school in AM/PM – one-way southbound only on Oakland Ave north of Pearl St
  - ✓ Maximum observed eastbound queue on Minneola St between Rose Ave and Bloxam Ave
  - ✓ 4 gates used for loading
  - ✓ Typically more congested than front loop in PM; parents must sign out Pre-K students



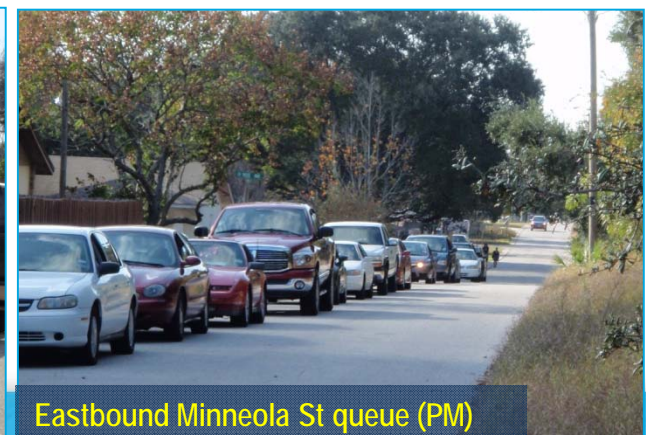
PM pick-up



PM pick-up queue at back loop entrance



Southbound Oakland Ave queue (PM)



Eastbound Minneola St queue (PM)



## Findings:

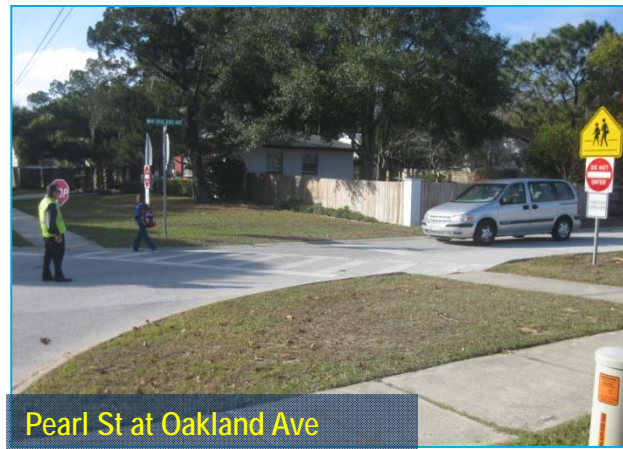
- ✓ Two bike/walk access points – one on each side of the front of the school along Pearl St
- ✓ Majority of walkers/bicyclists travel to/from the west and cross Pearl St at Oakland Ave with crossing guard
- ✓ Only a handful of students observed traveling to/from the east
- ✓ No sidewalks connecting Plum Lake neighborhood to Pearl St on east side of Grassy Lake Rd; students observed walking in the grass



Pearl St eastern walkers access (AM)



Pearl St at western walkers access (PM)



Pearl St at Oakland Ave



Grassy Lake Rd at Pearl St

## Findings:

- ✓ Crosswalks at Grassy Lake Rd / Pearl St are not appropriately connected and markings are faded
- ✓ Sidewalk coverage in neighborhood immediately west and south of the school is poor
- ✓ Bicycle racks are well placed near the front entrance of the school, but are the “wheel bender” style, are not secured on a paved surface, and are not fenced for security



Grassy Lake Rd at Pearl St



Sidewalk gap on Bloxam Ave north of Sumter St

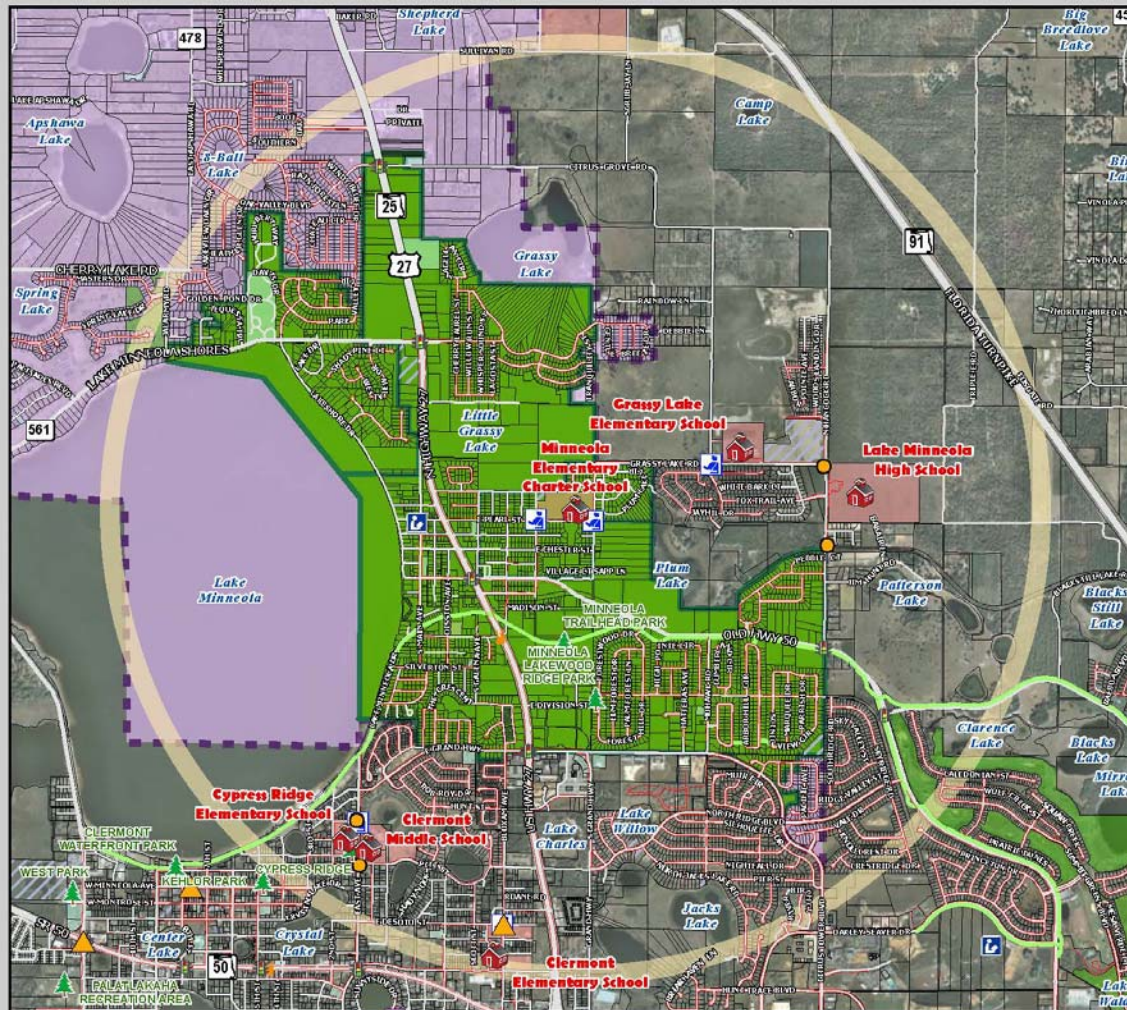


Existing bike racks



## Minneola Elementary Charter School

### Minneola Elementary Charter School: Existing Conditions Map



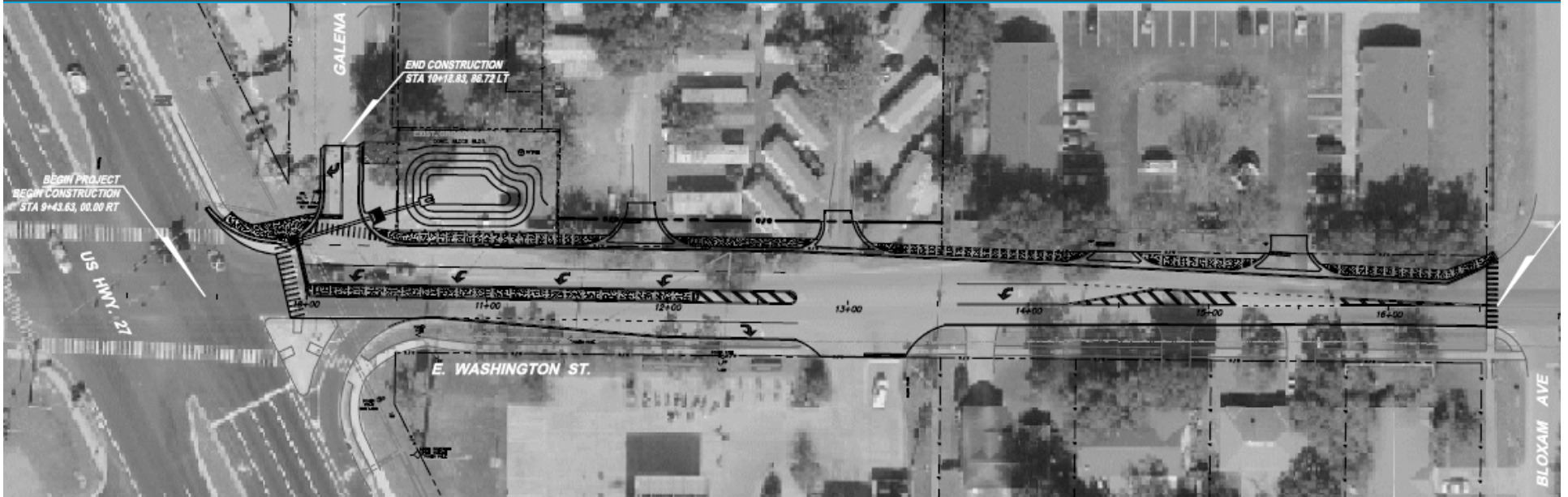
- Schools**
- Public Schools Lake County
  - Crossing Guard Locations
  - Libraries
  - 2-Mile Buffer of Minneola ECS
  - Parent Responsibility Zone
  - Special Exception Areas
  - Minneola ECS Attendance Zones (2010-2011)
- 01/2008 - 07/2011 Bicycle/Pedestrian Crash Locations (School Pickup/Dropoff Times)**
- Bicycle Involved
  - Pedestrian Involved
- Property Ownership**
- Parcels
  - School Property
  - Lake County Owned Property
  - City Owned Property
  - Church Owned Property
  - Golf Owned Property
  - Parks
- Transportation Network**
- Major Roads
  - Local Roads
  - Existing Sidewalks
  - Existing Trails
  - LakeXpress Bus Router & Stops
  - Railroads
  - Traffic Signal
  - Flashing Beacon

Sources: FDOT, FCLE, Lake County Schools, LSMD, HDR

This map is intended for planning purposes only.







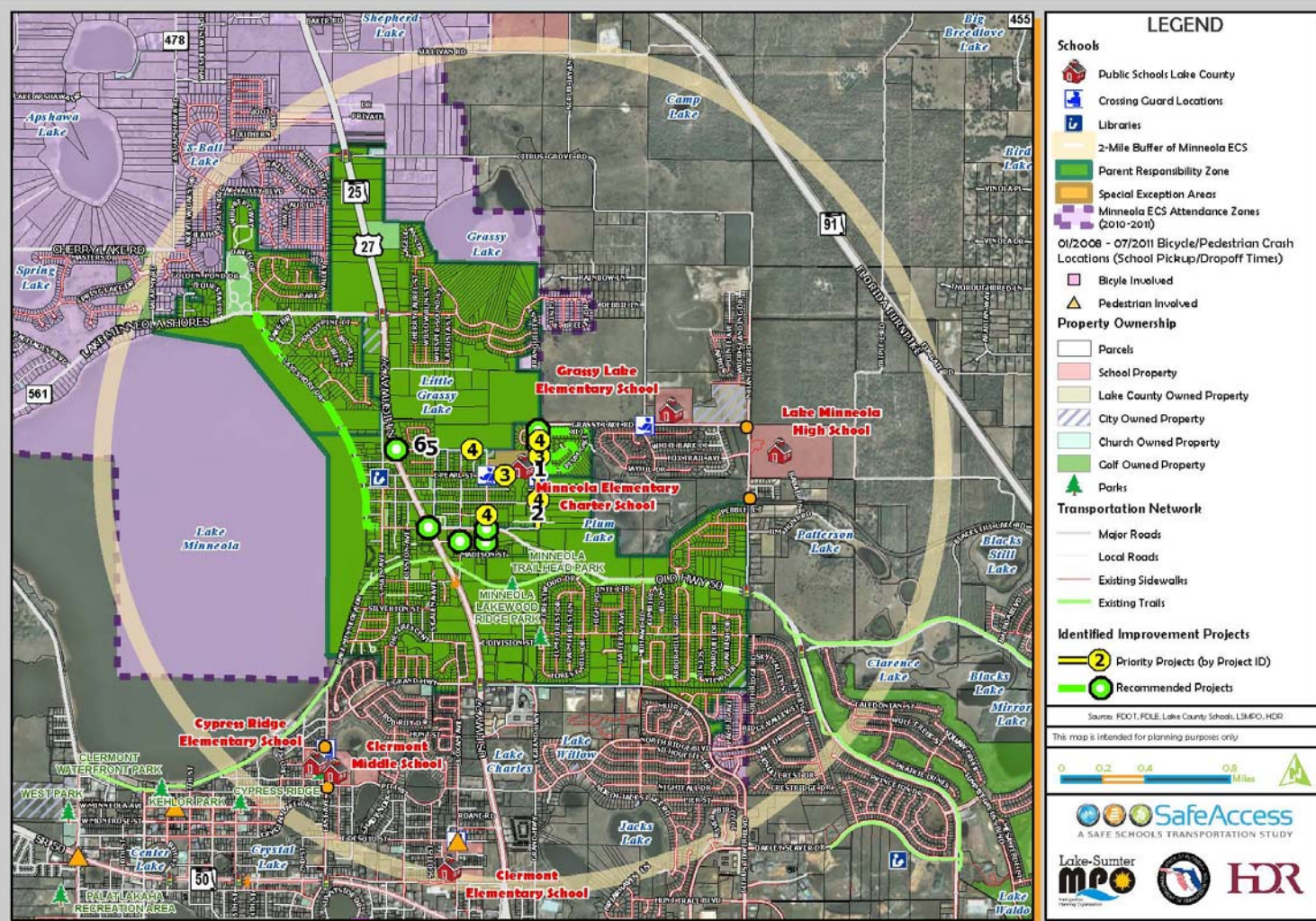
### Findings:

- ✓ Project includes new sidewalk on north side of Washington St from US 27 to Bloxam Ave and striped midblock crosswalk at Bloxam Ave intersection
- ✓ Construction funds available in FY 2015
- ✓ While sidewalks would be extended to US 27, there are no crossing guards to help students get across the wide and busy US 27 intersection
- ✓ A striped midblock crosswalk at the Washington/Bloxam intersection does not have value unless a new sidewalk is constructed on the west side of Bloxam Ave north of Washington St



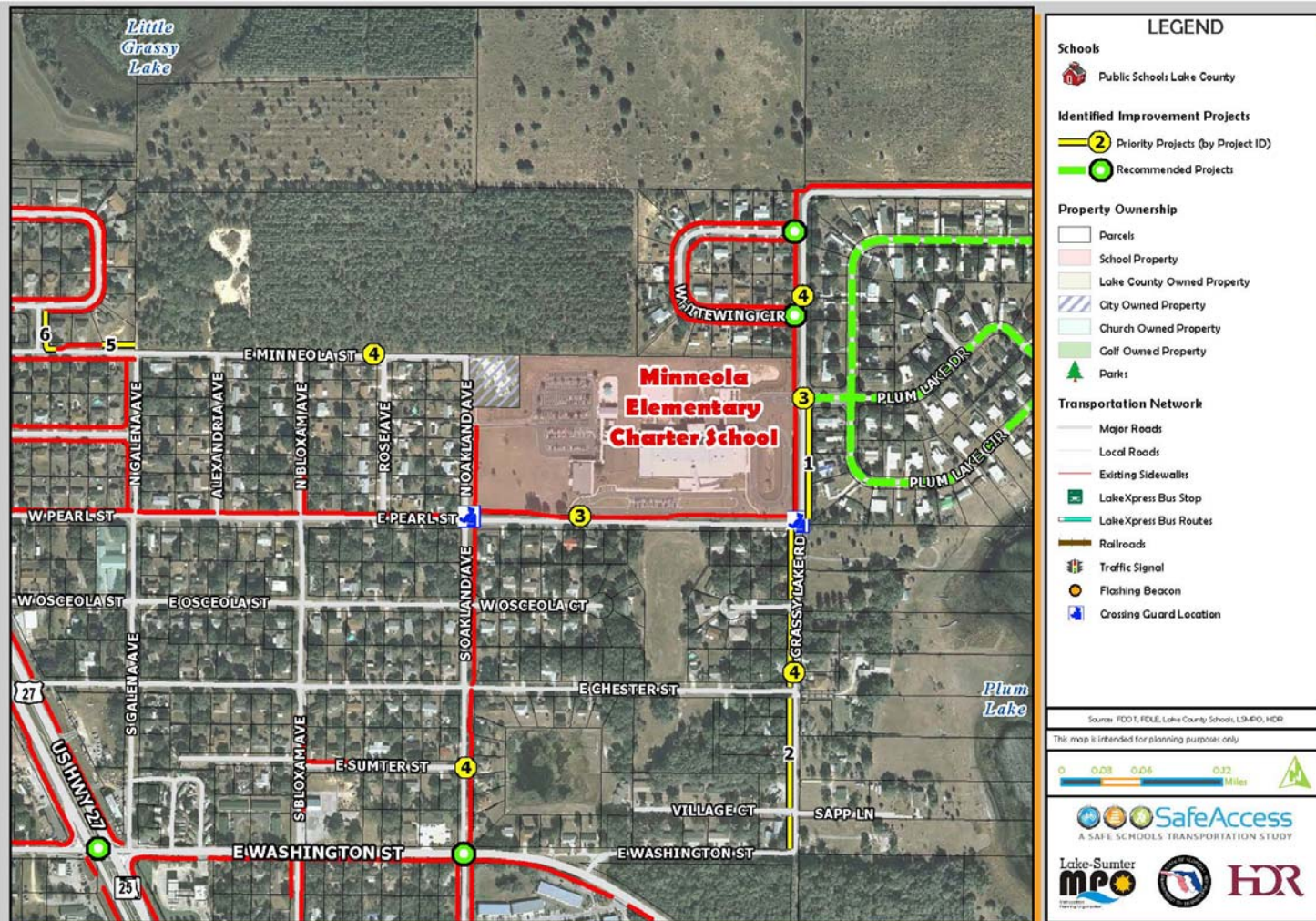
## Minneola Elementary Charter School

### Minneola Elementary Charter School: Transportation Access Master Plan





## Minneola Elementary Charter School: Priority Projects





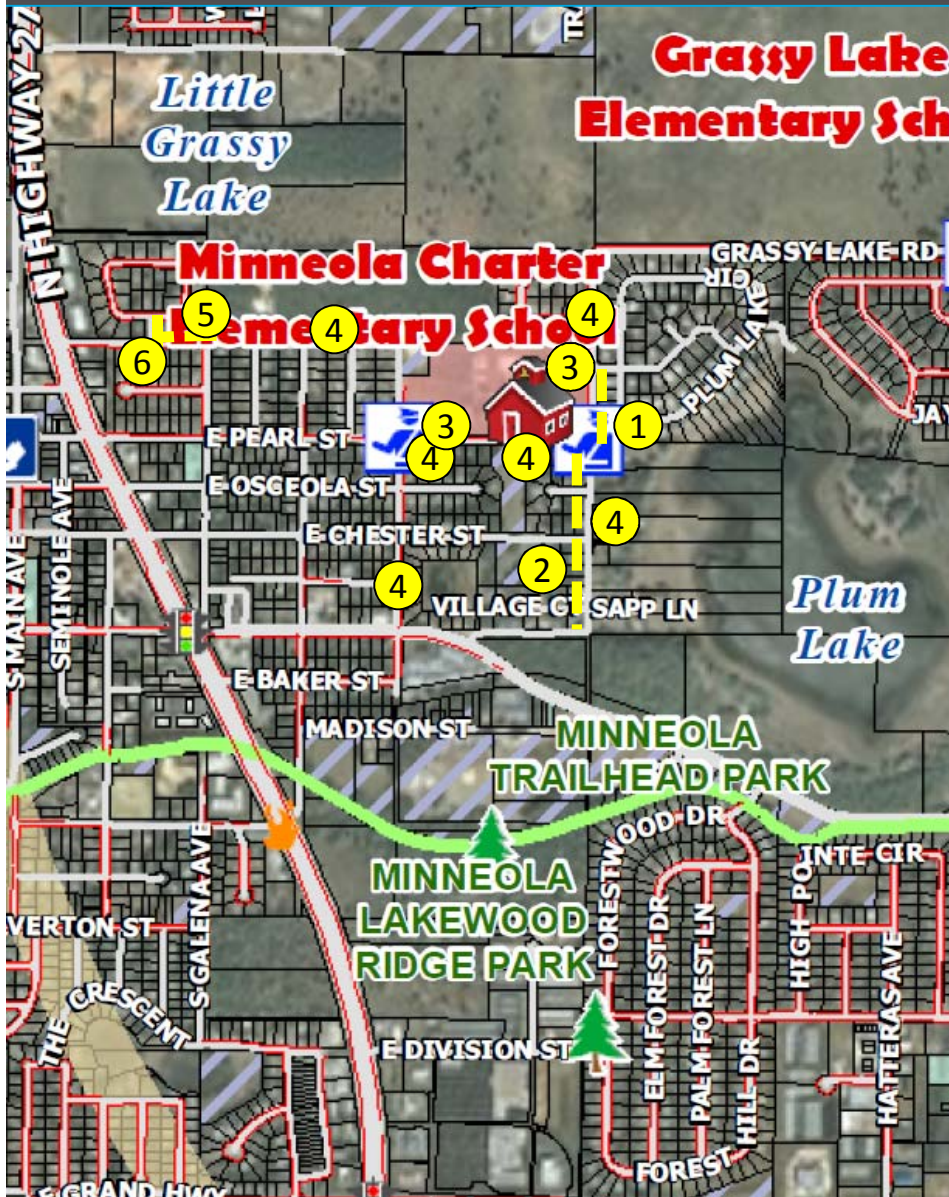


SafeAccess

A SAFE SCHOOLS TRANSPORTATION STUDY

# Recommended Priority Projects

## Minneola Elementary Charter School



### Priority Projects:

1. Grassy Lake Rd sidewalk, Plum Lake Dr to Pearl St (east side)
2. Grassy Lake Rd sidewalk, Pearl St to Washington St (west side)
3. Crosswalk markings at school driveway on Pearl St & bus driveway on Grassy Lake Rd
4. School speed zone flashing beacons on Grassy Lake Rd, Pearl St, Oakland Ave, & Minneola St
5. Minneola St sidewalk, fill gaps from Ridgcrest Loop to Galena St (north side)
6. Ridgcrest Loop sidewalk, Minneola St to Ridgcrest Loop (east side)



### Findings:

- ✓ There are no sidewalks on the east side of Grassy Lake Rd between Plum Lake Rd & Pearl St
- ✓ Students from Plum Lake neighborhood walk in the grass to access the crosswalk & crossing guard location at Pearl St
- ✓ Crosswalk markings at Grassy Lake Rd/Pearl St are faded
- ✓ Pearl St sidewalk is not connected to crosswalk

### Recommendations:

- ✓ Construct sidewalk on east side of roadway, provide missing connection, & restripe crosswalks at Grassy Lake Rd/Pearl St with high visibility markings





### Findings:

- ✓ There are no sidewalks on Grassy Lake Rd between Pearl St and Washington St
- ✓ More housing has direct access to the west side of the roadway
- ✓ New sidewalk would provide key direct connection to school for students living in close proximity

### Recommendations:

- ✓ Construct sidewalk on west side of roadway





### Findings:

- ✓ Front school driveway on Pearl St has faded crosswalk markings and detectable warnings missing on west side of crosswalk
- ✓ Bus driveway on Grassy Lake Rd does not have a marked crosswalk

### Recommendations:

- ✓ Restripe crosswalk at Pearl St driveway and install missing detectable warnings
- ✓ Stripe crosswalk at Grassy Lake Rd bus driveway



Pearl St school driveway



Grassy Lake Rd school bus driveway



## Priority Project #4

### School Speed Zone Flashing Beacons

#### Findings:

- ✓ School speed limit is posted at 15 mph on Grassy Lake Rd, Pearl St, Oakland Ave, & Minneola St adjacent to the school
- ✓ Existing supplemental sign plaques indicate periods in which reduced speed limit applies (7:30 – 9:00 AM & 1:00 – 3:45 PM) have small print & are hard to read by passing motorists

#### Recommendations:

- ✓ Replace existing supplemental sign plaques with flashing beacons that are set to be active during the appropriate time periods
- ✓ Beacons can be programmed to be active only during key periods on regular & early release days





# Priority Project #5

## Minneola St Sidewalk, Ridgecrest Loop to Galena St

### Findings:

- ✓ Sidewalk connection on the north side of Minneola St is incomplete for students living at Ridgecrest Loop
- ✓ Existing sidewalk on Galena Ave, which begins at Minneola St, connects to Pearl St, which has a continuous sidewalk to the school

### Recommendations:

- ✓ Construct complete sidewalk on Minneola St from Ridgecrest Loop to Galena Ave
- ✓ Stripe crosswalk on west leg of Minneola St/Galena Ave intersection and sign as school crossing





### Findings:

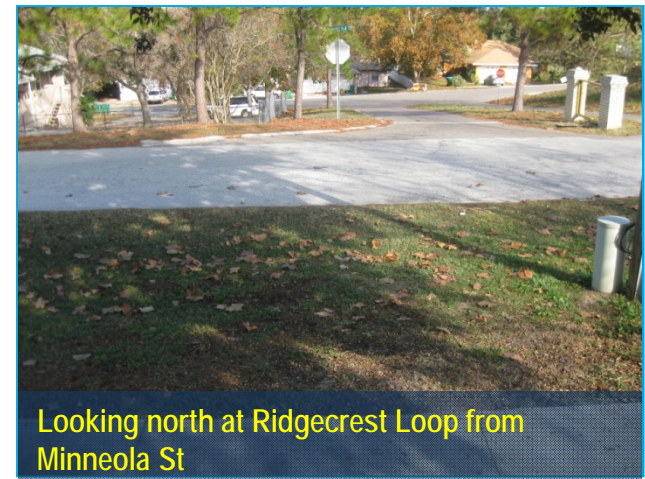
- ✓ Sidewalks existing on both sides of Ridgecrest Loop along the length of the circular street, but no sidewalks connect out to Minneola St
- ✓ Students living at Ridgecrest Loop have to walk in the street or in the grass to get to Minneola St, which only has complete sidewalks on the opposite side of the street
- ✓ Existing sidewalk on Galena Ave, which begins at Minneola St, connects to Pearl St, which has a continuous sidewalk to the school

### Recommendations:

- ✓ Construct sidewalk connecting Minneola St to Ridgecrest Loop (east side)
- ✓ Stripe crosswalk on south leg of Ridgecrest Loop “T” intersection



Looking north at Ridgecrest Loop from Minneola St



Looking north at Ridgecrest Loop from Minneola St

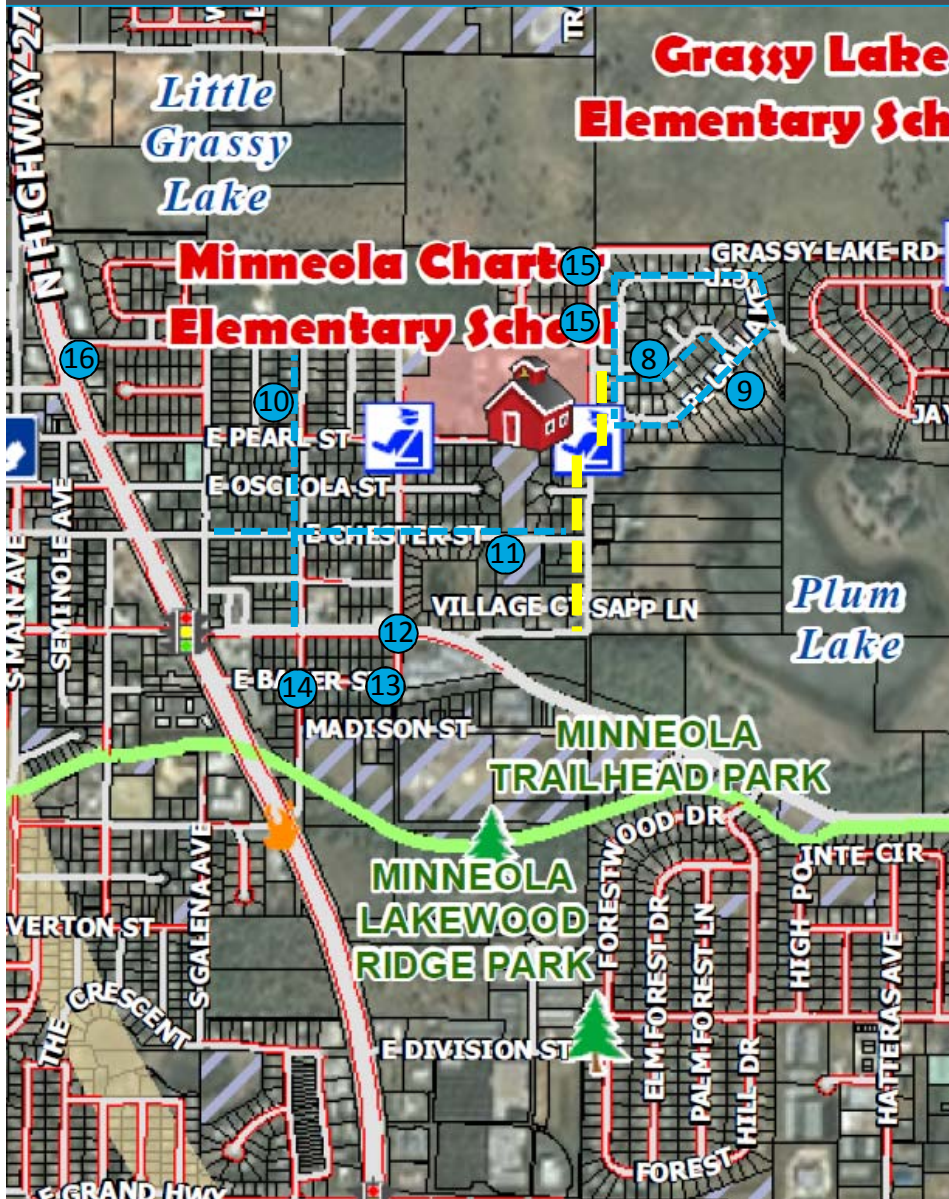
Project Priority	Item	Quantity	Units	Total
1	Crosswalk	23	ft	\$51.00
1	Sidewalk	440	ft	\$55,500.00
2	Sidewalk	1,056	ft	\$105,500.00
3	Crosswalk	102	ft	\$230.00
3	Detectable Warning	1	Pad	\$350.00
4	Flashing Beacon School Zone signs	6	Signs	\$3,000.00
5	Crosswalk	22	ft	\$49.00
5	School Crossing	2	Signs	\$600.00
5	Sidewalk	195	ft	\$37,100.00
6	Crosswalk	60	ft	\$134.00
6	Sidewalk	132	ft	\$32,200.00

### ESTIMATE BASIS AND ASSUMPTIONS:

- Sidewalk estimates based on estimating tool developed for Phase 1, Estimates for all other improvements based on Unit Costs per FDOT Lake County (Area 7) averages (07/2011 - 06/2012).
- Estimate does not include utility relocation costs, utility relocation assumed by others.
- The mobilization costs are based on 15% of the construction cost and estimates include maintenance of traffic costs (15% of construction costs).
- No Regular excavation & embankment to 1 ft depth is assumed
- No R/W Impact
- No specialized landscaping (beyond sodding) is included.
- Sidewalk is assumed to be 5 feet wide, unit given is in linear feet.



## Minneola Elementary Charter School



### Other Recommended Projects:

8. Plum Lake Dr sidewalk, Grassy Lake Rd to Plum Lake Cir East (south side)
9. Plum Lake Cir sidewalk, Plum Lake Dr to Plum Lake Dr (outside)
10. Bloxam Ave, Old Hwy 50 to Minneola St (west side)
11. Chester St sidewalk, Galena Ave to Grassy Lake Rd (north side)
12. School speed zone on Old Hwy 50 at Oakland Ave & add crossing guard
13. Baker St crosswalk at Oakland Ave (west leg)
14. Bloxam Ave crosswalk at Baker St (south leg)
15. Whitewing Cir stop bar modifications
16. Minneola St at US 27 sidewalk connector



## Contact Information

Minneola Elementary Charter School

This website represents an ongoing commitment to increase safe access to schools within the Lake~Sumter Metropolitan Planning Organization Planning Area.

Updates to data, and suggestions for programming and project ideas are welcome from all agencies and the general public.

**Mike Woods**

Project Manager, Transportation Planner  
(352) 315-0170  
mwoods@lakesumtermo.com



**Mindy Heath, AICP**

Consultant Project Manager  
(407) 420-4200  
Mindy.heath@hdrinc.com



*Promoting Regional  
Transportation Partnerships*