



SafeAccess

A SAFE SCHOOLS TRANSPORTATION STUDY

Cypress Ridge Elementary

School Clermont, FL



CYPRESS RIDGE
ELEMENTARY

DEC 7 & 8 PAPA JOHN'S
10 HOLIDAY SHOP 9:00
15 FMLY WALK 4:30
CHICK-FIL-A NIGHT

August 2012





SafeAccess

A SAFE SCHOOLS TRANSPORTATION STUDY

Cypress Ridge Elementary School

Cypress Ridge Elementary School Snapshot



December 7, 2011

Grades: Pre-Kindergarten – 5th

Total Students: 595

- Provided Bus Transportation : 6
- Not Provided Bus Transportation: 589

Students Living within the “Walk Zone”: 102

- Provided Bus Transportation: 1
- Not Provided Bus Transportation: 101

Observation Day (Partly Cloudy)

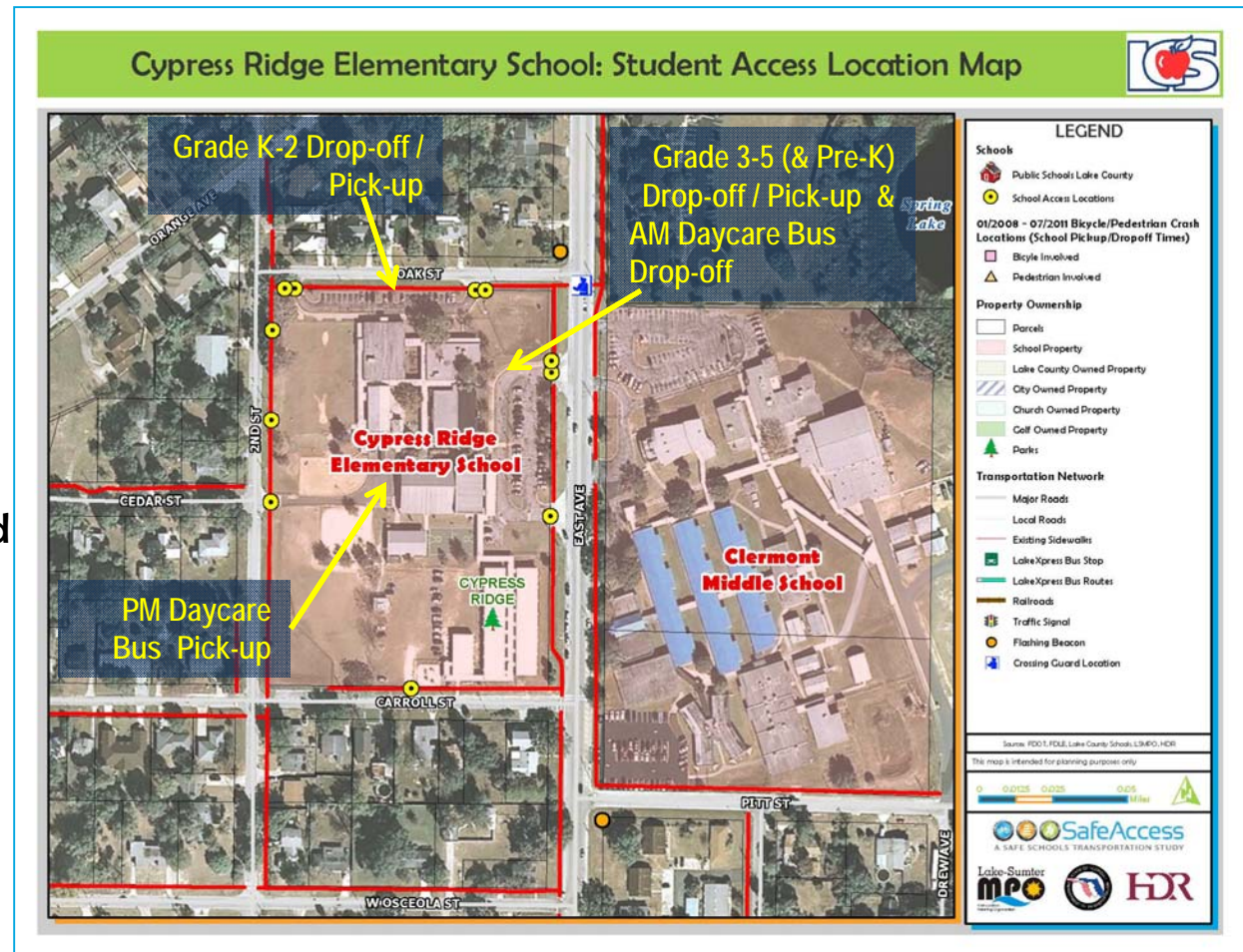
- Walkers: 9
- Bike Riders: 0



- ✓ Cypress Ridge Elementary School website – Click [here](#)
- ✓ City of Clermont website – Click [here](#)
- ✓ Lake County Schools website – Click [here](#)

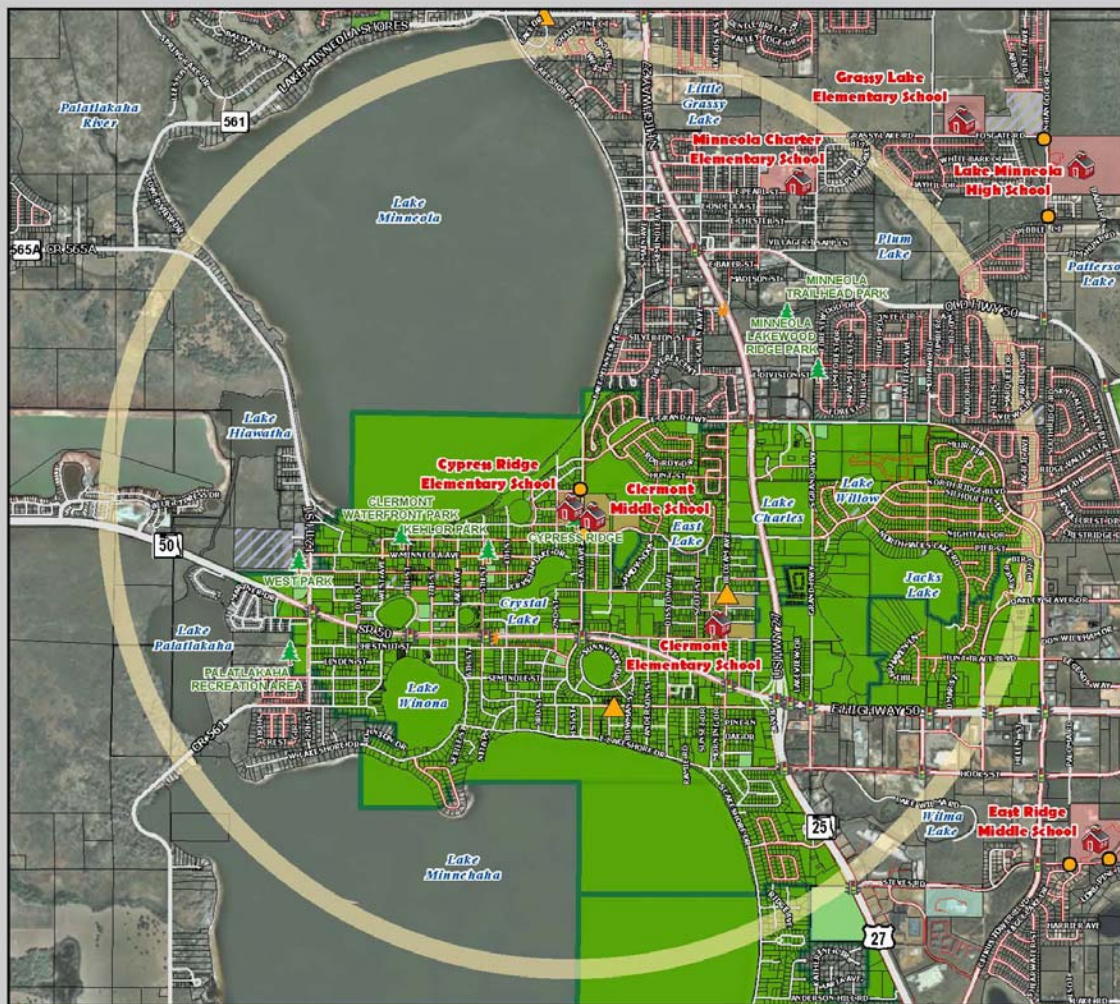
Findings:

- ✓ CRES is a magnet school (math/science/technology/social science)
- ✓ No busing except ESE students
- ✓ Most parents drive their students to school
- ✓ Two drop-off/pick-up loops
- ✓ One-way traffic flow (NB) on 2nd St between Orange Ave and Carroll St during arrival/dismissal
- ✓ Oak St blocked to traffic to/from East Ave during arrival/dismissal
- ✓ Bike/walk access via the front of the school (East Ave)
- ✓ Crossing guard located at East Ave/Oak St



Attendance and 2-Mile "Walk" Zone Map

Cypress Ridge Elementary School: Attendance and 2-Mile "Walk" Zone Map



LEGEND

Schools

- Public Schools Lake County
- 2-Mile Buffer of Cypress Ridge ES
- Parent Responsibility Zone
- Special Exception Areas
- Cypress Ridge ES Attendance Zones (2010-2011)

01/2008 - 07/2011 Bicycle/Pedestrian Crash Locations (School Pickup/Dropoff Times)

- Bicycle Involved
- Pedestrian Involved

Property Ownership

- Parcels
- Parks

Transportation Network

- Major Roads
- Local Roads
- Existing Sidewalks
- LakeXpress Bus Stop
- LakeXpress Bus Routes
- Railroads
- Traffic Signal
- Flashing Beacon

Sources: FDOT, FDLE, Lake County Schools, LDMPO, HDR

This map is intended for planning purposes only.

0 0.2 0.4 0.8 Miles

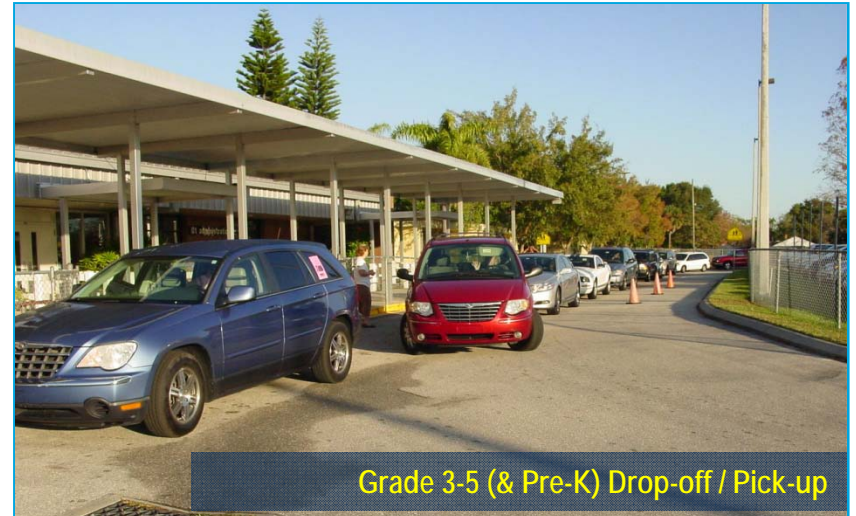
SafeAccess
A SAFE SCHOOLS TRANSPORTATION STUDY

Lake-Sumter **m**po **HDR**

Arrival and Dismissal Schedule

- 7:00-7:50 am:** ELC program & breakfast begins (typically about 20 students)
- 7:30-8:30 am:** Crossing guard on duty
- 7:50-8:10 am:** Gates open for drop-off
- 8:15 am:** School begins
- 2:45 pm:** School dismissal
- 2:45-3:20 pm:** Typical student pick-up period
- 2:45-6:00 pm:** ELC after school program (60-90 students)

Note: Students are released one hour early on Wednesdays





SafeAccess

A SAFE SCHOOLS TRANSPORTATION STUDY

Cypress Ridge Elementary School

Bus Access



Daycare Bus Pick-up (PM) at back of school

Findings:

- ✓ No regular bus service provided. Daycare buses drop-off students in the front of the school (via East Ave) in the morning and pick-up in the back of the school (via 2nd St) in the afternoon
- ✓ Drivers in the afternoon vehicle queue on 2nd Street were generally courteous and left an opening for daycare bus access

Findings:

- ✓ Drop-off / pick-up for grades K-2 is from Oak St
- ✓ No traffic is permitted to use Oak St from East Ave during arrival/dismissal time - a barricade is used to prohibit this movement and direct outbound traffic back to 2nd St
- ✓ Signage is also used to create one-way northbound flow on 2nd St between Carroll St and Orange Ave during arrival/dismissal time
- ✓ The existing campus layout limits car capacity and motorists encroach into 2nd Avenue; maximum observed PM queue was approximately 40 vehicles



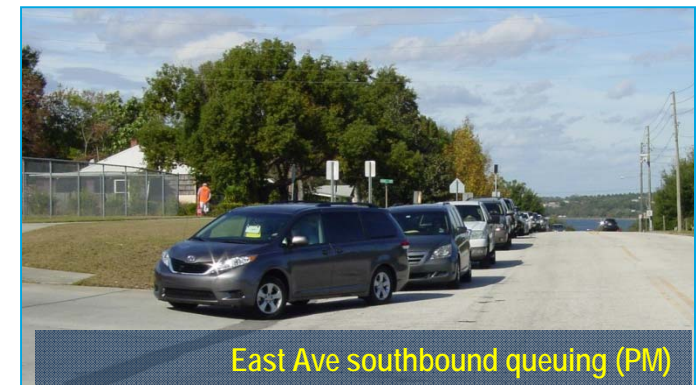
Signs Noting Traffic Patterns Around School

Findings:

- ✓ Drop-off / pick-up for grades 3-5 & Pre-K is from East Ave
- ✓ 5 gates used plus crosswalk used for drop-off/pick-up; use microphone to call students to cars in PM
- ✓ Vehicles queue onto East Ave during both AM & PM periods; max observed queue on East Ave stretched nearly to the center island just south of Grand Hwy
- ✓ All queuing in PM was in southbound direction; no northbound left-turn queue
- ✓ Parents are not permitted to park on-site to drop-off or pick-up students; as a result, some parents drop-off / pick-up on East Ave or park on East Ave and walk up to the school



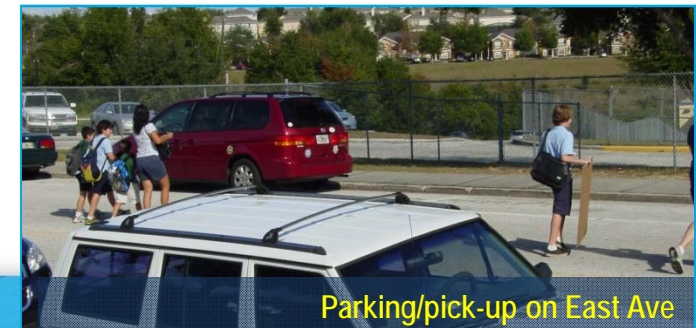
Grade 3-5 (& Pre-K) Pick-up (PM)



East Ave southbound queuing (PM)



East Ave southbound queuing (PM)



Parking/pick-up on East Ave



A SAFE SCHOOLS TRANSPORTATION STUDY

Cypress Ridge Elementary School

Bike/Walk Access



East Ave/Oak St Crosswalk



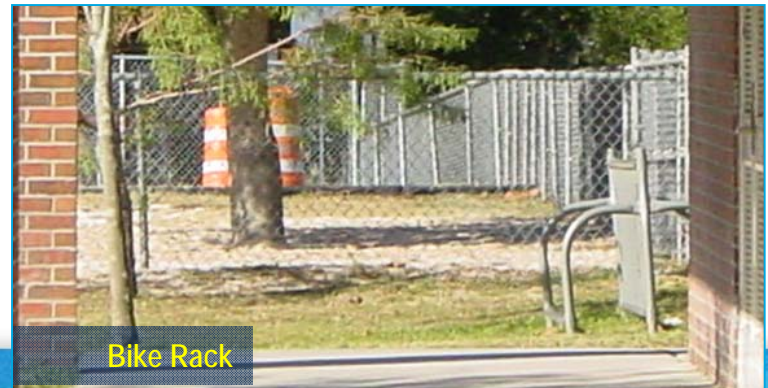
Walkers on East Ave



East Ave Sidewalk



2nd St Sidewalk



Bike Rack

Findings:

- ✓ Less than 10 walkers & generally no bicyclists; not many students within reasonable walking/bicycling distance
- ✓ Bike / walk access via front of school
- ✓ One crossing guard located at East Ave & Oak St
- ✓ Sections of sidewalk on East Ave & 2nd St in poor condition
- ✓ One bike rack is provided in the back of the school – location is not very visible, but is secure; rack type is “wheel bender”
- ✓ School does provide a bicycle / pedestrian safety program

Findings:

- ✓ The City of Clermont has recently installed several new sidewalks in the vicinity of the school, including sidewalks on School St, Juniata St, & Scott St & Prince Edward Ave between Desoto St and Pitt St
- ✓ The City has a planned project in 2012 to reconstruct East Ave from SR 50 to Lake Minneola, which presents an opportunity to look at pedestrian, bicyclist, parking, and turning traffic needs in this corridor
- ✓ The City has a similar planned project in 2013 or 2014 to reconstruct Pitt St from East Ave to Grand Hwy with potential to consider pedestrian, bicycle, and turning traffic needs

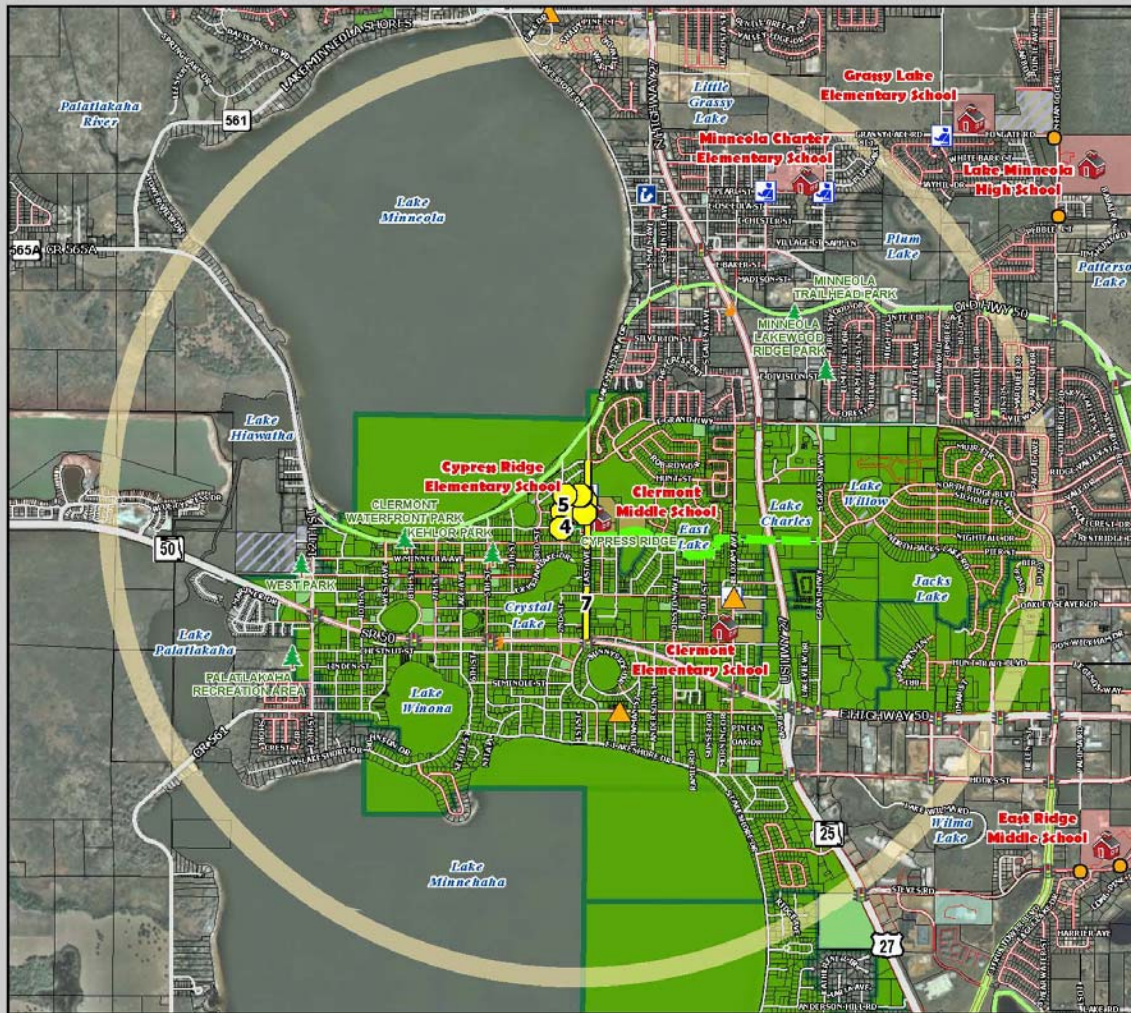
Recommendations:

- ✓ Coordinate with the City on the planned maintenance/ improvement of these roadways to include needed projects – evaluate turn lanes, on-street parking, curb extensions, etc.



Transportation Access Master Plan

Cypress Ridge Elementary School: Transportation Access Master Plan



LEGEND

Schools

- Public Schools Lake County
- Crossing Guard Locations
- Libraries
- 2-Mile Buffer of Cypress Ridge ES
- Parent Responsibility Zone
- Special Exception Areas
- Cypress Ridge ES Attendance Zones (2010-2011)

01/2008 - 07/2011 Bicycle/Pedestrian Crash Locations (School Pickup/Dropoff Times)

- Bicycle Involved
- Pedestrian Involved

Property Ownership

- Parcels
- School Property
- Lake County Owned Property
- City Owned Property
- Church Owned Property
- Calf Owned Property
- Parks

Transportation Network

- Major Roads
- Local Roads
- Existing Sidewalks
- Existing Trails

Identified Improvement Projects

- Priority Projects (by Project ID)
- Recommended Projects

Sources: FDOT, FOLE, Lake County Schools, LCMPO, HDR

This map is intended for planning purposes only.

0 0.2 0.4 0.8 Miles

A SAFE SCHOOLS TRANSPORTATION STUDY

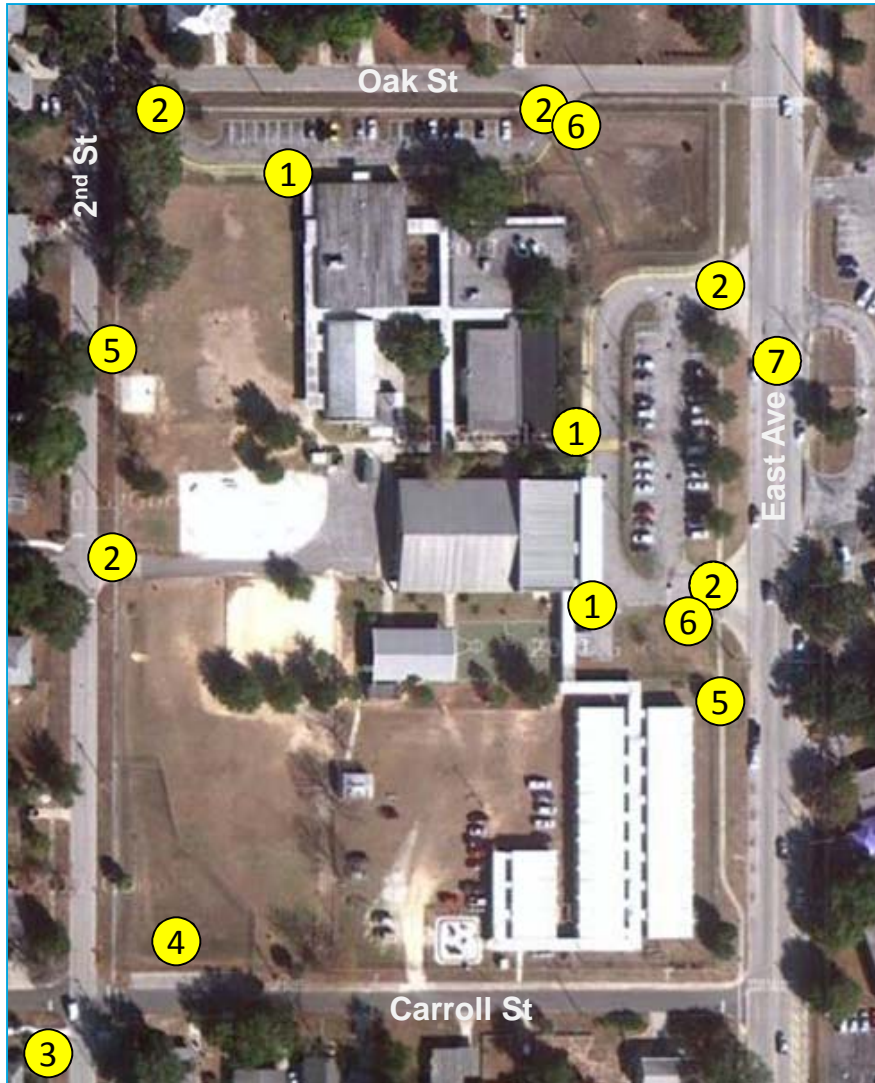


SafeAccess

A SAFE SCHOOLS TRANSPORTATION STUDY

Cypress Ridge Elementary School

Recommended Priority Projects



1. School accessibility improvements
2. Mark crosswalks at all school driveways
3. Mark crosswalks at 2nd St/Carroll St intersection
4. Connect sidewalk on Carroll St
5. Sidewalk repair/maintenance
6. Replace/update signage at parent drop-off / pick-up exits
7. Restripe East Ave – add turn lanes & modify parking



SafeAccess

A SAFE SCHOOLS TRANSPORTATION STUDY

Cypress Ridge Elementary School

Recommended Priority Projects

Cypress Ridge Elementary School: Priority Projects



LEGEND

Schools

- Public Schools Lake County

Identified Improvement Projects

- Priority Projects (by Project ID)
- Recommended Projects

Property Ownership

- Parcels
- School Property
- Lake County Owned Property
- City Owned Property
- Church Owned Property
- Golf Owned Property
- Parks

Transportation Network

- Major Roads
- Local Roads
- Existing Sidewalks
- LakeXpress Bus Stop
- LakeXpress Bus Routes
- Railroads
- Traffic Signal
- Flashing Beacon
- Crossing Guard Location

Source: FDOT, FDLE, Lake County Schools, LSKMPO, HDR

This map is intended for planning purposes only.



SafeAccess
A SAFE SCHOOLS TRANSPORTATION STUDY





A SAFE SCHOOLS TRANSPORTATION STUDY

Cypress Ridge Elementary School

Priority Project #1

School Accessibility Improvements

Findings:

- ✓ Only one handicap parking space provided, and it has no accessibility to the curb (existing accessible ramp is fenced off)
- ✓ No curb ramps or accessible access point provided at either of the parent drop-off / pick-up loops

Recommendations:

- ✓ Make changes to bring site up to ADA compliance including addition of handicap spaces in both parking areas, addition of curb ramps, restriping crosswalk with FDOT ladder style markings, etc.



Handicap parking at front of school



Crosswalk at front of school



Crosswalk at front of school



A SAFE SCHOOLS TRANSPORTATION STUDY

Cypress Ridge Elementary School

Priority Project #2

Mark Crosswalks at all School Driveways

Findings:

- ✓ There are no marked crosswalks across any of the school driveways on East Ave or Oak St
- ✓ Although in most cases, students would not be crossing the driveways when entering or exiting the school, pedestrians should be acknowledged as having the right-of-way at the driveways

Recommendations:

- ✓ Mark crosswalks across all school driveways using high visibility FDOT ladder style markings



Eastern school driveway on Oak St



Southern school driveway on East Ave



Northern school driveway on East Ave



A SAFE SCHOOLS TRANSPORTATION STUDY

Cypress Ridge Elementary School

Priority Project #3

Mark Crosswalks at 2nd St/Carroll St Intersection

Findings:

- ✓ No crosswalk provided across south leg of intersection
- ✓ Low visibility transverse lines mark crosswalk across east leg of intersection

Recommendations:

- ✓ Stripe both crosswalks with high visibility FDOT ladder style markings



© 2012 Microsoft Corporation Imagery © Microsoft



A SAFE SCHOOLS TRANSPORTATION STUDY

Cypress Ridge Elementary School

Priority Project #4

Connect Sidewalk on Carroll St

Findings:

- ✓ Existing sidewalk on north side of Carroll St is interrupted just east of 2nd St by a section used for on-street parking
- ✓ It is unclear if this parking was intended to serve a particular function, but it appears out of place

Recommendations:

- ✓ Remove short on-street parking area and replace with sidewalk and landscape buffer





A SAFE SCHOOLS TRANSPORTATION STUDY

Cypress Ridge Elementary School

Priority Project #5

Sidewalk Repair/Maintenance

Findings:

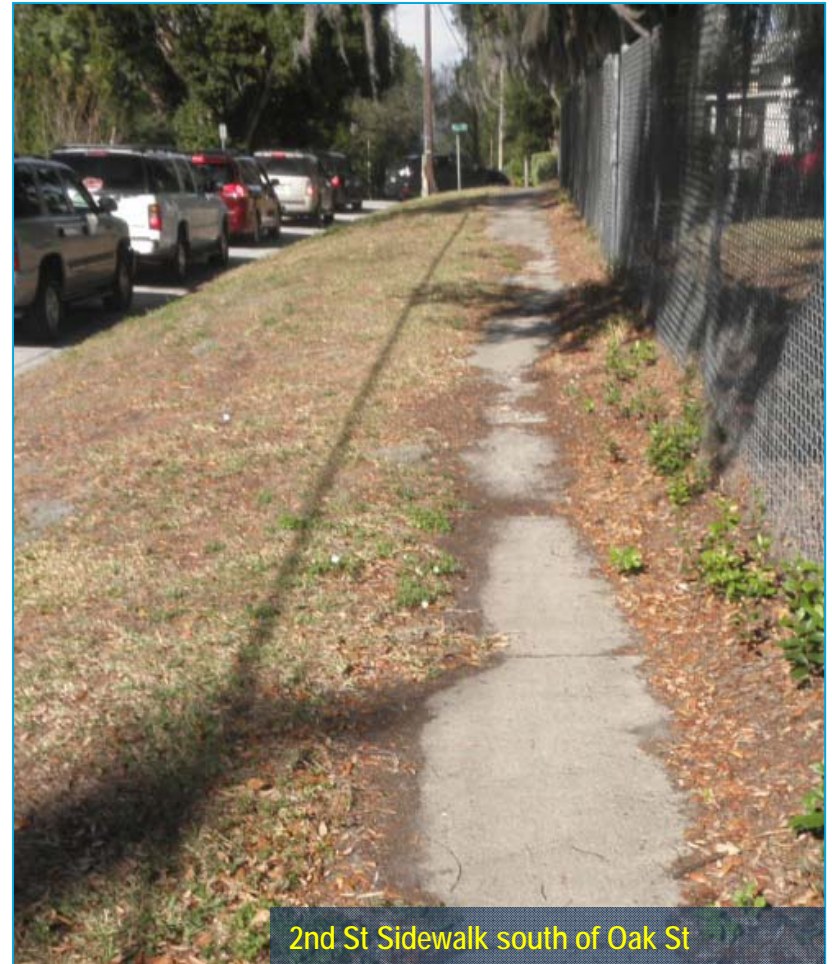
- ✓ Portions of the existing sidewalks on East Ave (west side) and 2nd Street adjacent to the school are in poor condition – overgrown and cracked
- ✓ Cracked sidewalks can be a tripping hazard

Recommendations:

- ✓ Repair and maintain sidewalks as necessary



East Ave Sidewalk south of the school driveway



2nd St Sidewalk south of Oak St



A SAFE SCHOOLS TRANSPORTATION STUDY

Cypress Ridge Elementary School

Priority Project #6

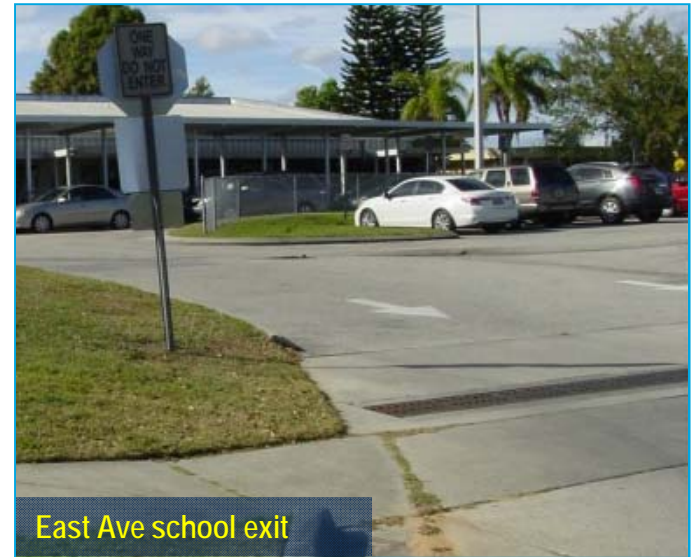
Replace/Update Signage at Drop-off / Pick-up Loops

Findings:

- ✓ Existing signs at exit of front drop-off / pick-up loop to East Ave is worn
- ✓ Sign noting times of left turn prohibition is not legible
- ✓ “Do Not Enter” signs at both drop-off / pick-up loop exits is non-standard

Recommendations:

- ✓ Replace signs at East Ave driveway exit
- ✓ Use standard MUTCD R5-1 “Do Not Enter” signage at both drop-off / pick-up exit driveways



East Ave school exit



East Ave exit



A SAFE SCHOOLS TRANSPORTATION STUDY

Cypress Ridge Elementary School

Priority Project #7

Restripe East Ave

Findings:

- ✓ East Ave is currently striped with one travel lane in each direction and on-street parking
- ✓ Traffic movements during arrival & dismissal can be chaotic
- ✓ Curb to curb width of street in front of school is approx. 44 feet; pedestrian crossing distances are long
- ✓ Some on-street parking spaces are marked “No Parking” – they are not used since they interfere with the student pick-up car line
- ✓ City of Clermont plans to reconstruct East Ave

Recommendations:

- ✓ Evaluate striping changes to provide a northbound left-turn lane and southbound right-turn lane at the north school driveway
- ✓ Evaluate on-street parking modifications and use of curb extensions from Carroll Street to Oak Street



East Ave



East Ave



SafeAccess

A SAFE SCHOOLS TRANSPORTATION STUDY

Cypress Ridge Elementary School

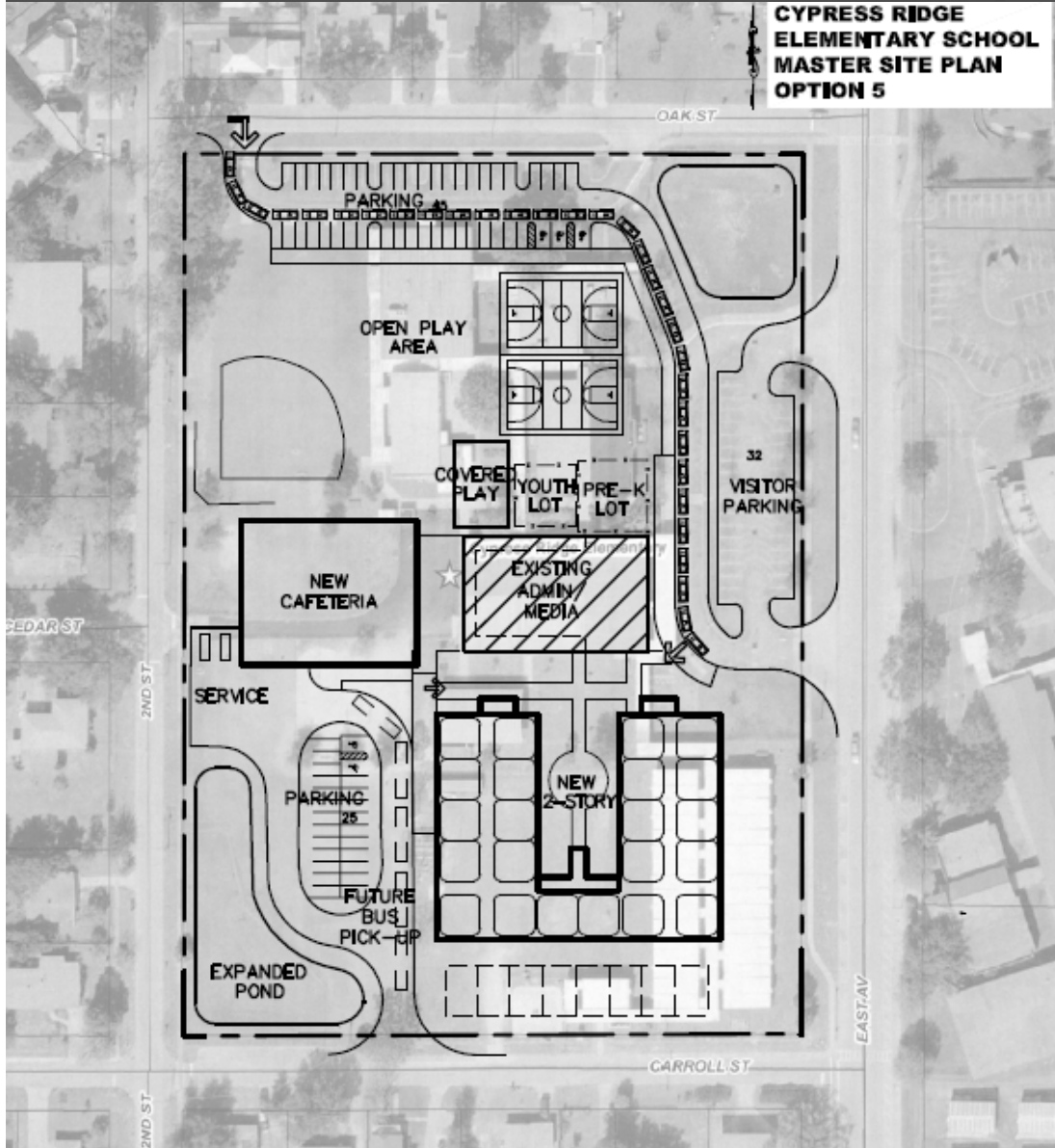
Cost Estimates For Priority Projects

Project Priority	Item	Quantity	Units	Total
2	Crosswalk Stripping	150	ft	\$335.00
3	Crosswalk Stripping	42	ft	\$100.00
4	Sidewalk	107	ft	\$29,500.00
6	Time List Sign	1	Sign	\$300.00
6	Do Not Enter Sign	1	Sign	\$300.00

ESTIMATE BASIS AND ASSUMPTIONS:

- Sidewalk estimates based on estimating tool developed for Phase 1, Estimates for all other improvements based on Unit Costs per FDOT Lake County (Area 7) averages (07/2011 - 06/2012).
- Estimate does not include utility relocation costs, utility relocation assumed by others.
- The mobilization costs are based on 15% of the construction cost and estimates include maintenance of traffic costs (15% of construction costs).
- No Regular excavation & embankment to 1 ft depth is assumed
- No R/W Impact
- No specialized landscaping (beyond sodding) is included.
- Sidewalk is assumed to be 5 feet wide, unit given is in linear feet.

**CYPRESS RIDGE
ELEMENTARY SCHOOL
MASTER SITE PLAN
OPTION 5**



Findings:

- ✓ Combines the two existing drop-off/pick-up loops into one on-site circulation loop
- ✓ Suggests a clockwise queuing/staging traffic flow pattern around the school on Oak St, 2nd St, and potentially Carroll St
- ✓ Secondary pick-up could be used for future bus loop
- ✓ Concept does not show pedestrian access; pedestrians coming from the north & east would be required to cross the car line – could potentially be accommodated via a raised speed table



Cypress Ridge Elementary School

Contact Information

This website represents an ongoing commitment to increase safe access to schools within the Lake~Sumter Metropolitan Planning Organization Planning Area.

Updates to data, and suggestions for programming and project ideas are welcome from all agencies and the general public.

Mike Woods

Project Manager, Transportation Planner

(352) 315-0170

mwoods@lakesumtermpo.com



Mindy Heath, AICP

Consultant Project Manager

(407) 420-4200

Mindy.heath@hdrinc.com



*Promoting Regional
Transportation Partnerships*