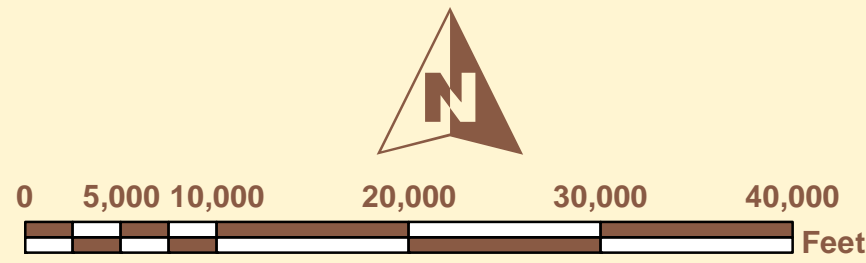
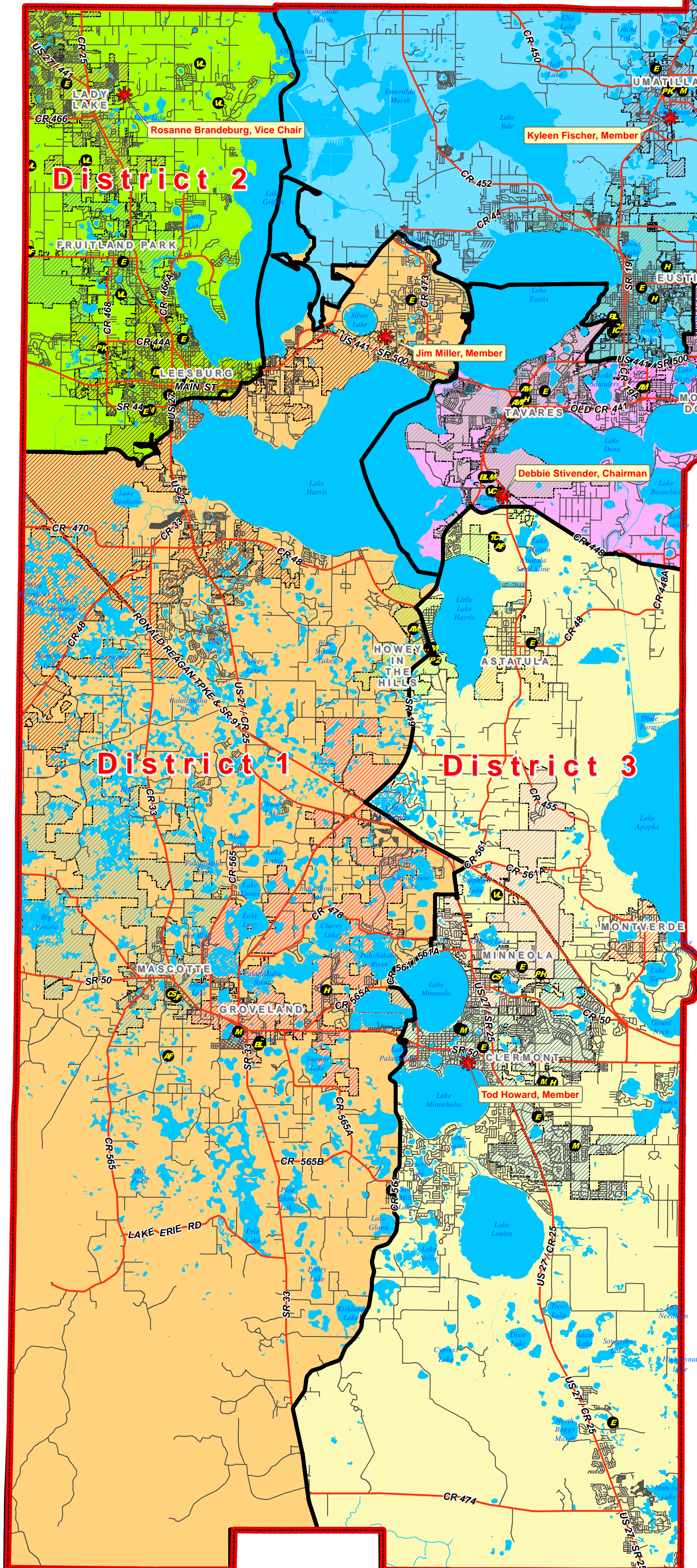
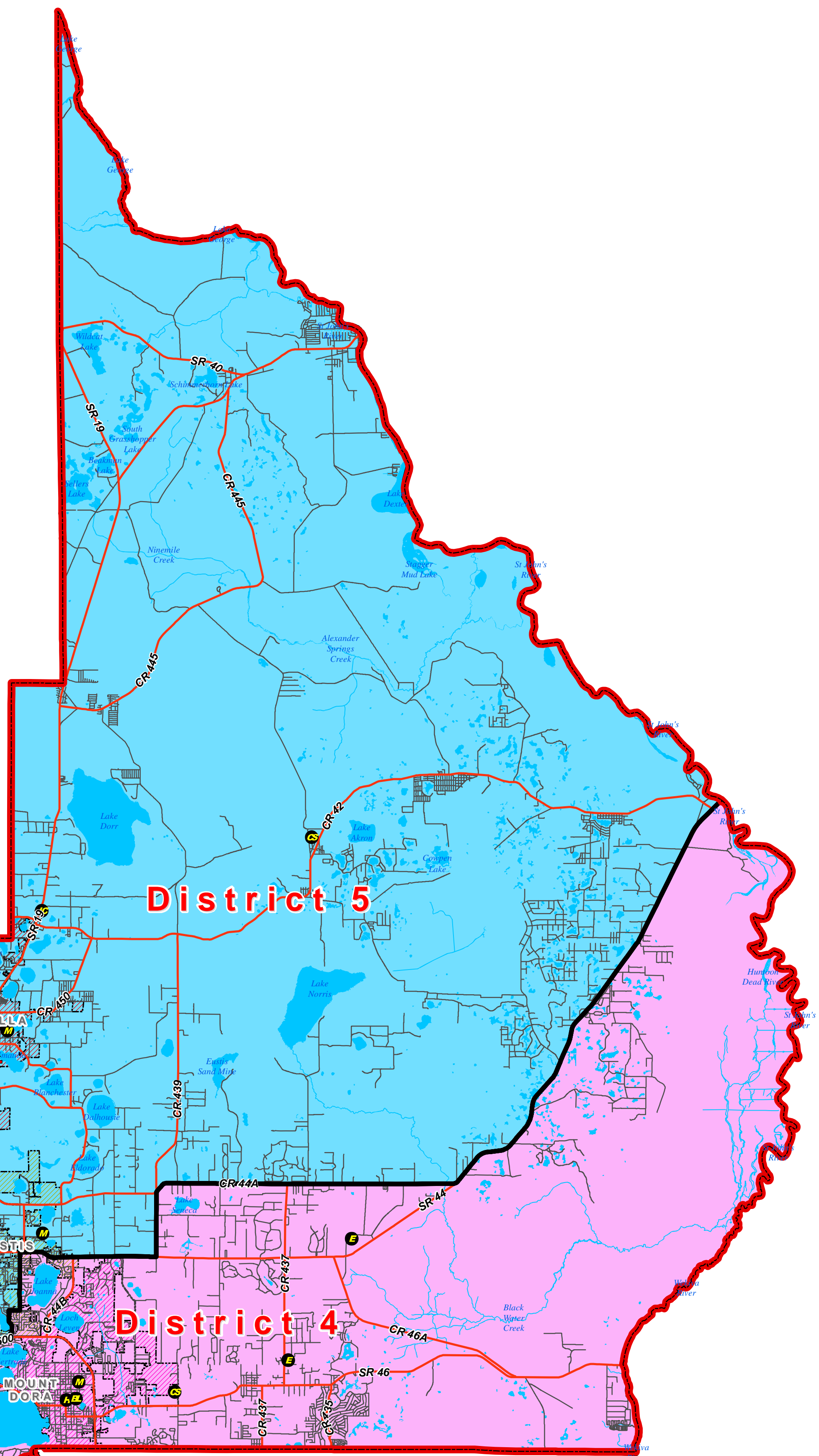


# Lake County Schools -- Board Member Districts OPTION 1



**Legend**

Lake County Boundary	<b>Municipalities</b>	<b>Educational &amp; Administrative School Facilities</b>
Current School Board Members	Astatula	Pre-K Center
<b>OPTION 1 -- School Board District Boundaries</b>	Clermont	Elementary School
District 1	Eustis	Middle School
District 2	Fruitland Park	High School
District 3	Groveland	Conversion Charter School
District 4	Howey-in-the-Hills	Independent Charter School
District 5	Lady Lake	Vocational School
Major Highways & Roads	Leesburg	Training Complex
Minor Roads & Streets	Mascotte	Pre-K through 12th
Lakes and water bodies	Minneola	Proposed High School
	Montverde	Ag Farm
	Mount Dora	Administrative
	Tavares	Bus Lot
	Umatilla	Temporary Use
		Vacant
		Vacant Land



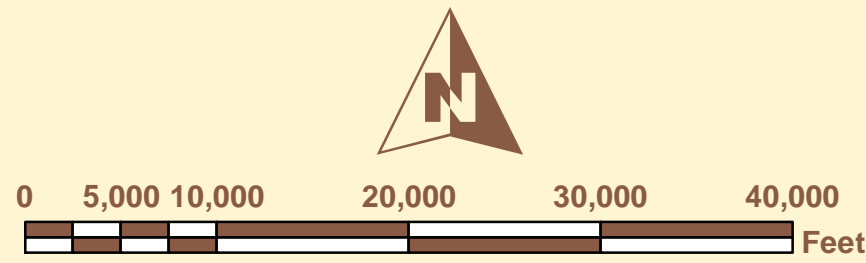
## Statistics by District Assignment

School Board Member District	Total White Population	Total Black Population	Total Hispanic Population	Total Asian Population	Total Multi-Racial Population	Total Population	Deviation in Optimum District Population (59,410)	Deviation in Optimum District Population (as Percent)	Population Allowance within 2.5% of Optimum
1	47,190	4,793	7,611	1,040	1,313	61,947	2,537	4.27%	No
2	37,789	6,785	2,877	571	942	48,964	-10,446	-17.58%	No
3	54,409	7,684	15,981	2,404	2,799	83,277	23,867	40.17%	No
4	41,640	4,405	5,236	737	905	52,923	-6,487	-10.92%	No
5	40,337	4,129	4,304	303	868	49,941	-9,469	-15.94%	No
<b>TOTAL</b>	<b>221,365</b>	<b>27,796</b>	<b>36,009</b>	<b>5,055</b>	<b>6,827</b>	<b>297,052</b>	<b>2</b>	<b>0.00%</b>	

School Board Member District	Number of Elementary Schools	Number of Middle Schools	Number of High Schools	Total Number of School Floor Area (Sq. Ft.)	Total Number of FISH Student Stations	Total Number of Registered Voters	Voter Population (as Percent)	Total Floor Area Square Footage (as Percent)	Educational Student Stations (as Percent)
1	4	1	1	1,115,115	8,149	40,682	21.43%	15.87%	16.07%
2	5	2	1	1,137,842	8,167	31,783	16.74%	16.20%	16.11%
3	7	3	2	2,003,781	15,841	53,447	28.15%	28.53%	31.25%
4	5	2	2	1,379,360	9,551	33,336	17.56%	19.64%	18.84%
5	5	2	2	1,388,450	8,987	30,607	16.12%	19.77%	17.73%
<b>TOTAL</b>	<b>26</b>	<b>10</b>	<b>8</b>	<b>7,024,548</b>	<b>50,695</b>	<b>189,855</b>	<b>100.00%</b>	<b>100.00%</b>	<b>100.00%</b>

School Board Member District	White Population (as Percent)	Black Population (as Percent)	Hispanic Population (as Percent)	Asian Population (as Percent)	Multi-Racial Population (as Percent)	Elementary Schools (as Percent)	Middle Schools (as Percent)	High Schools (as Percent)
1	21.32%	17.24%	21.14%	20.57%	19.23%	15.38%	10.00%	12.50%
2	17.07%	24.41%	7.99%	11.30%	13.80%	19.23%	20.00%	12.50%
3	24.58%	27.64%	44.38%	47.56%	41.00%	26.92%	30.00%	25.00%
4	18.81%	15.85%	14.54%	14.58%	13.26%	19.23%	20.00%	25.00%
5	18.22%	14.85%	11.95%	5.99%	12.71%	19.23%	20.00%	25.00%
<b>TOTAL</b>	<b>100.00%</b>	<b>100.00%</b>	<b>100.00%</b>	<b>100.00%</b>	<b>100.00%</b>	<b>100.00%</b>	<b>100.00%</b>	<b>100.00%</b>

# Lake County Schools -- Board Member Districts OPTION 2



**Legend**

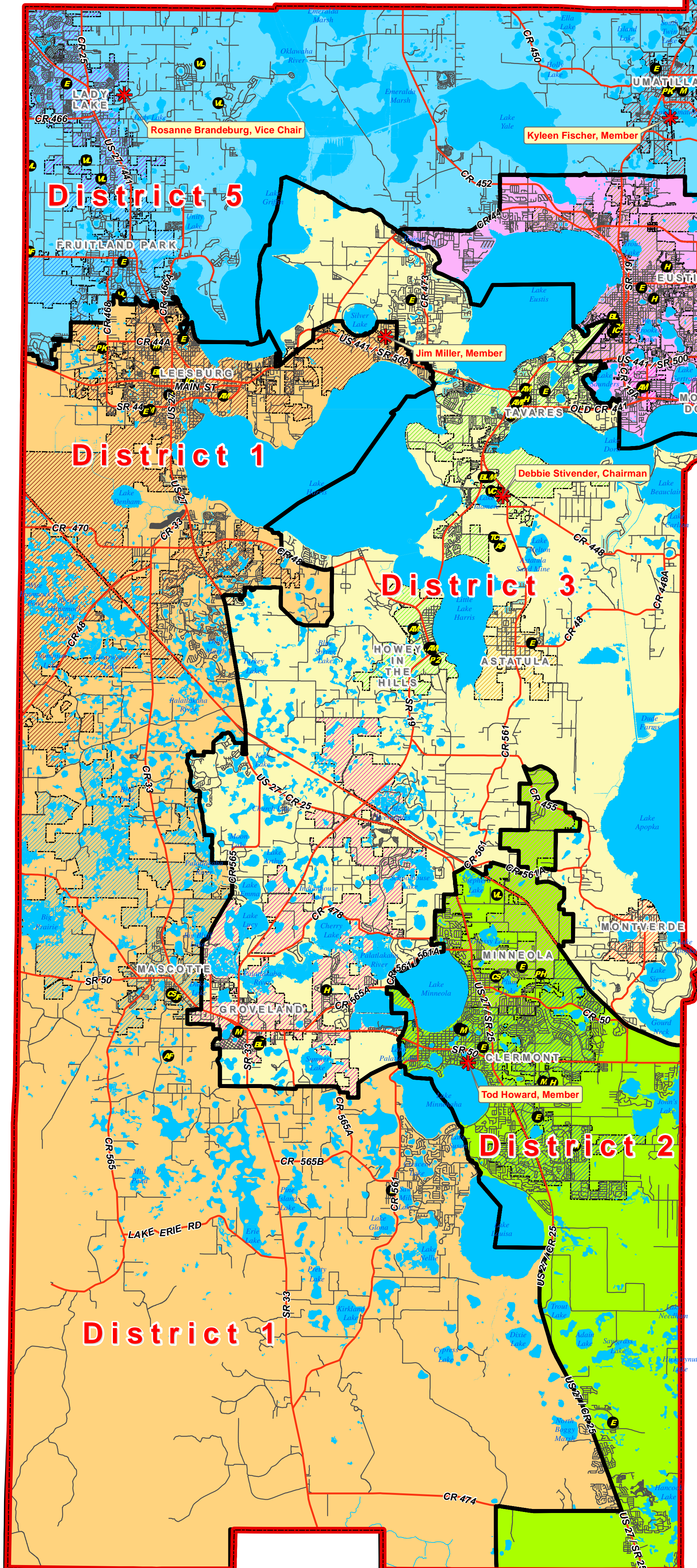
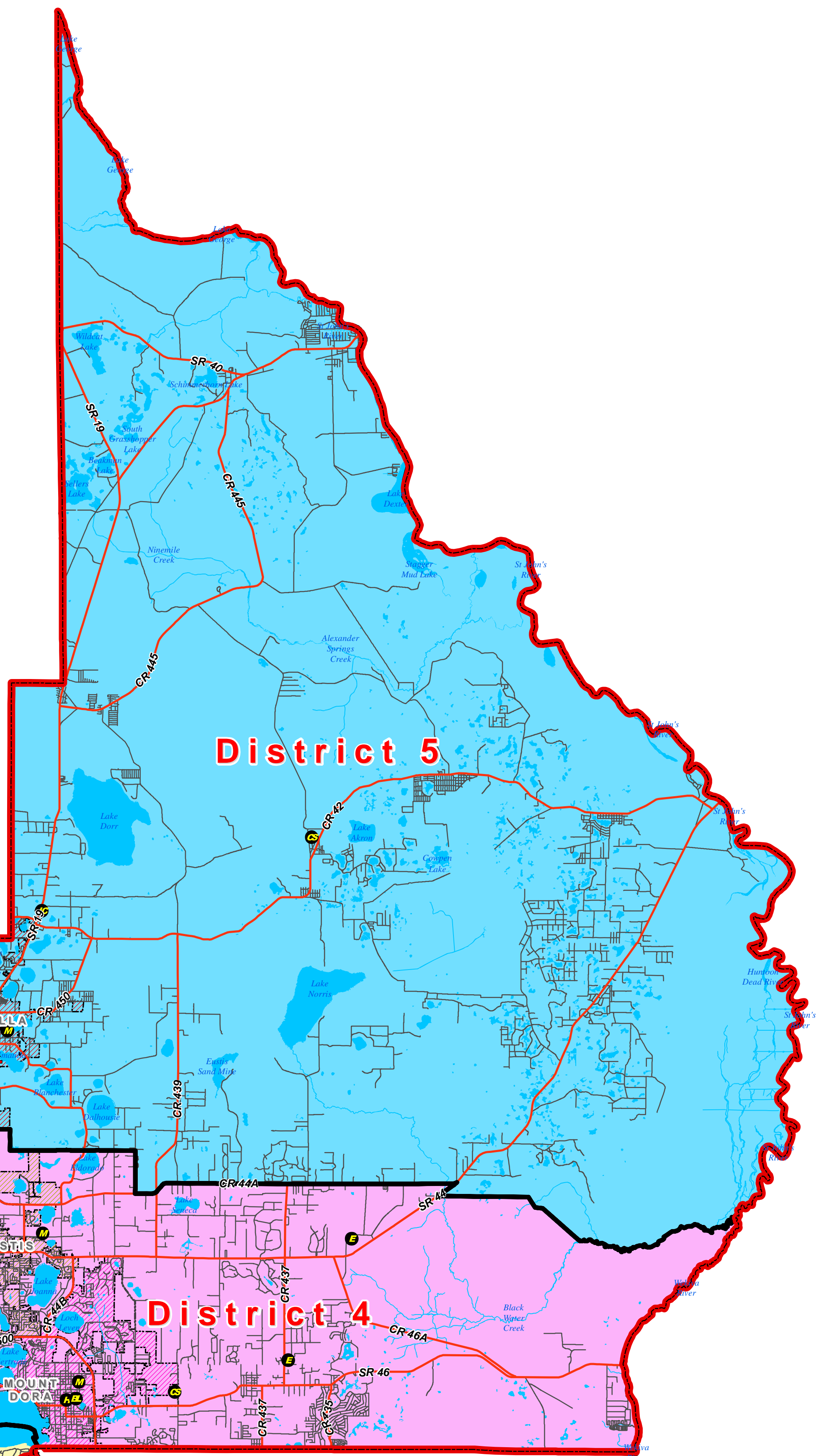
- Lake County Boundary** (Red line)
- Current School Board Members** (Red star)
- OPTION 2 -- School Board District Boundaries**
  - District 1 (Orange)
  - District 2 (Green)
  - District 3 (Black)
  - District 4 (Pink)
  - District 5 (Blue)
- Major Highways & Roads** (Red line)
- Minor Roads & Streets** (Grey line)
- Lakes and water bodies** (Blue)

**Municipalities**

- Astatula
- Clermont
- Eustis
- Fruitland Park
- Groveland
- Howey-in-the-Hills
- Lady Lake
- Leesburg
- Mascotte
- Minneola
- Montverde
- Mount Dora
- Tavares
- Umatilla

**Educational & Administrative School Facilities**

- Pre-K Center
- Elementary School
- Middle School
- High School
- Conversion Charter School
- Independent Charter School
- Vocational School
- Training Complex
- Pre-K through 12th
- Proposed High School
- Ag Farm
- Administrative
- Bus Lot
- Temporary Use
- Vacant
- Vacant Land



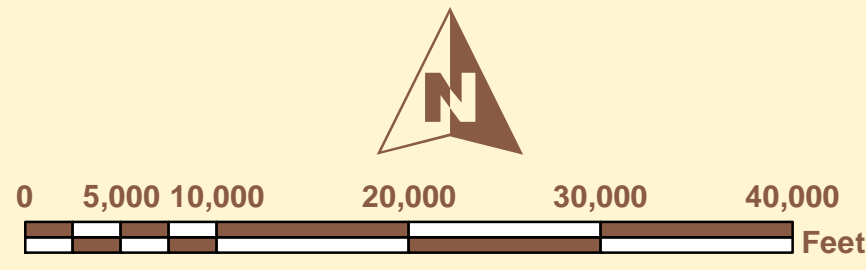
## Statistics by District Assignment

School Board Member District	Total White Population	Total Black Population	Total Hispanic Population	Total Asian Population	Total Multi-Racial Population	Total Population	Deviation in Optimum District Population (\$9,410)	Deviation in Optimum District Population (as Percent)	Population Allowance within 2.5% of Optimum
1	41,857	8,051	7,582	971	1,375	59,836	426	0.72%	Yes
2	36,749	6,802	12,575	2,001	2,228	60,355	945	1.59%	Yes
3	45,583	4,411	6,136	926	1,251	58,307	-1,103	-1.86%	Yes
4	44,860	6,200	6,359	693	1,045	59,157	-253	-0.43%	Yes
5	52,316	2,332	3,357	464	928	59,397	-13	-0.02%	Yes
<b>TOTAL</b>	<b>221,365</b>	<b>27,796</b>	<b>36,009</b>	<b>5,055</b>	<b>6,827</b>	<b>297,052</b>	<b>2</b>	<b>0.00%</b>	

School Board Member District	Number of Elementary Schools	Number of Middle Schools	Number of High Schools	Total Number of School Floor Area (Sq. Ft.)	Total Number of FISH Student Stations	Total Number of Registered Voters	Voter Population (as Percent)	Total Floor Area Footage (as Percent)	Educational Student Stations (as Percent)
1	5	2	1	1,173,245	8,492	38,055	20.04%	16.70%	16.75%
2	6	3	2	1,797,760	14,814	37,642	19.83%	25.59%	29.22%
3	4	2	2	1,565,985	11,003	37,732	19.87%	22.29%	21.70%
4	6	2	2	1,723,855	11,453	37,055	19.52%	24.54%	22.59%
5	5	1	1	763,703	4,933	39,371	20.74%	10.87%	9.73%
<b>TOTAL</b>	<b>26</b>	<b>10</b>	<b>8</b>	<b>7,024,548</b>	<b>50,695</b>	<b>189,855</b>	<b>100.00%</b>	<b>100.00%</b>	<b>100.00%</b>

School Board Member District	White Population (as Percent)	Black Population (as Percent)	Hispanic Population (as Percent)	Asian Population (as Percent)	Multi-Racial Population (as Percent)	Elementary Schools (as Percent)	Middle Schools (as Percent)	High Schools (as Percent)
1	18.91%	28.96%	21.06%	19.21%	20.14%	19.23%	20.00%	12.50%
2	16.60%	24.47%	34.92%	39.58%	32.64%	23.08%	30.00%	25.00%
3	20.59%	15.87%	17.04%	18.32%	15.38%	23.08%	20.00%	25.00%
4	20.27%	22.31%	17.66%	13.71%	15.31%	23.08%	20.00%	25.00%
5	23.63%	8.39%	9.32%	9.18%	13.59%	19.23%	10.00%	12.50%
<b>TOTAL</b>	<b>100.00%</b>	<b>100.00%</b>	<b>100.00%</b>	<b>100.00%</b>	<b>100.00%</b>	<b>100.00%</b>	<b>100.00%</b>	<b>100.00%</b>

# Lake County Schools -- Board Member Districts OPTION 3



**Legend**

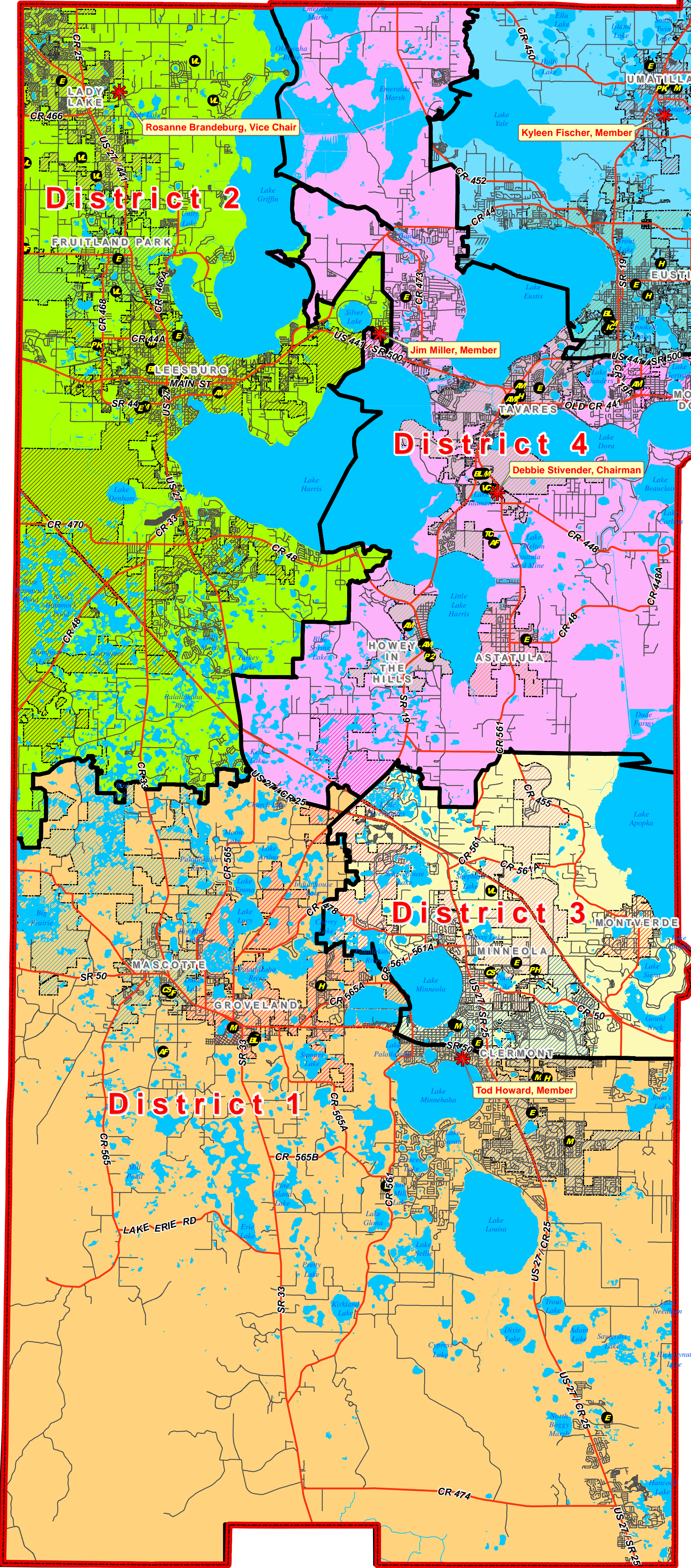
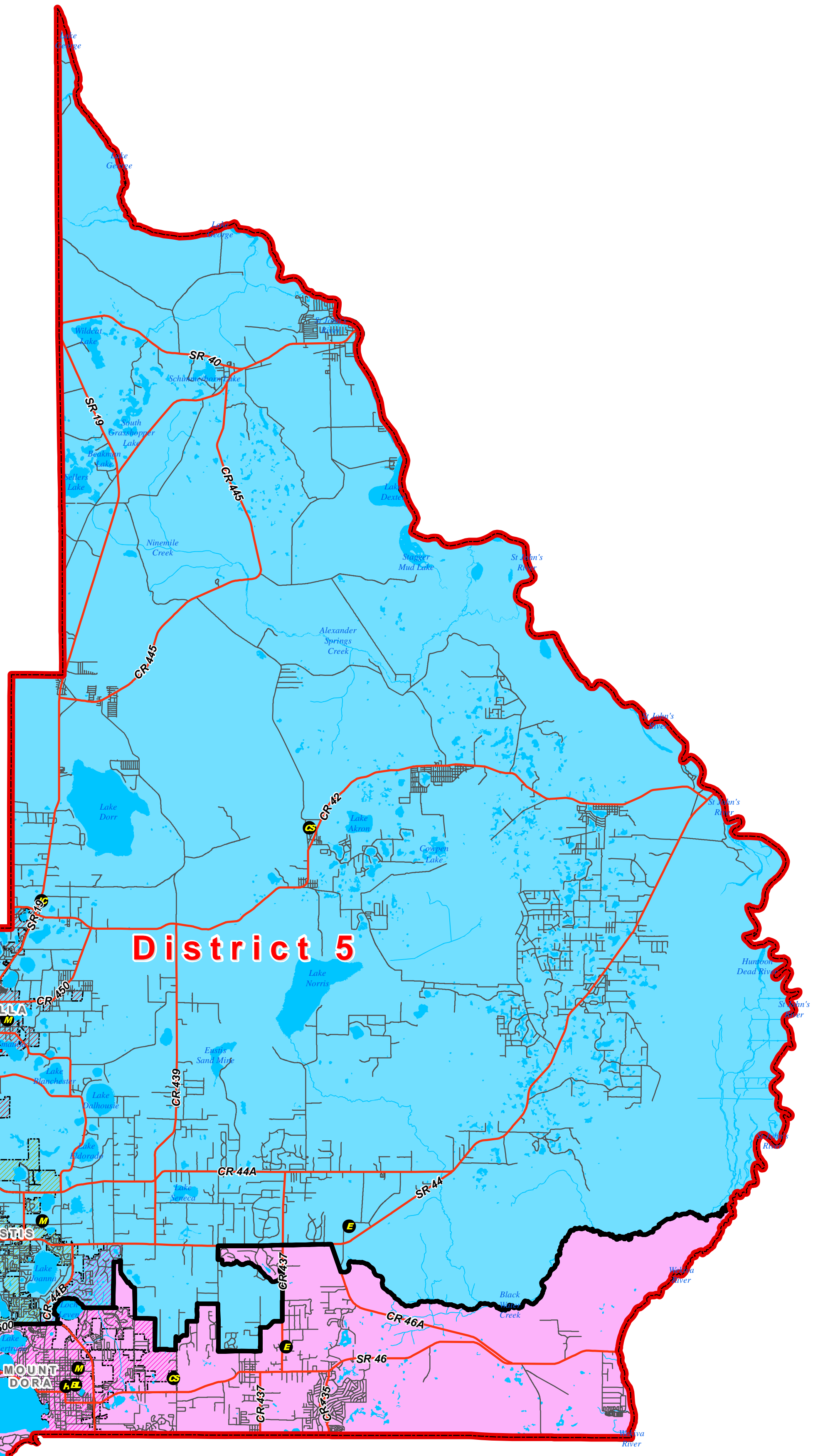
- Lake County Boundary** (Red line)
- Current School Board Members** (Red star)
- OPTION 3 -- School Board District Boundaries**
  - District 1 (Yellow)
  - District 2 (Green)
  - District 3 (Pink)
  - District 4 (Purple)
  - District 5 (Blue)
- Major Highways & Roads** (Red line)
- Minor Roads & Streets** (Grey line)
- Lakes and water bodies** (Blue area)

**Municipalities**

- Astatula
- Clermont
- Eustis
- Fruitland Park
- Groveland
- Howey-in-the-Hills
- Lady Lake
- Leesburg
- Mascotte
- Minneola
- Montverde
- Mount Dora
- Tavares
- Umatilla

**Educational & Administrative School Facilities**

- Pre-K Center
- Elementary School
- Middle School
- High School
- Conversion Charter School
- Independent Charter School
- Vocational School
- Training Complex
- Pre-K through 12th
- Proposed High School
- Ag Farm
- Administrative
- Bus Lot
- Vacant
- Vacant Land



**Statistics by District Assignment**

School Board Member District	Total White Population	Total Black Population	Total Hispanic Population	Total Asian Population	Total Multi-Racial Population	Total Population	Deviation in Optimum District Population (\$9,410)	Deviation in Optimum District Population (as Percent)	Population Allowance within 2.5% of Optimum
1	42,936	6,315	15,182	1,833	2,175	68,441	9,031	15.20%	No
2	60,134	8,251	3,957	978	1,270	74,590	15,180	25.55%	No
3	21,895	4,088	5,855	992	1,339	34,169	-25,241	-42.49%	No
4	52,923	4,683	6,041	780	1,041	65,468	6,058	10.20%	No
5	43,477	4,459	4,974	472	1,002	54,384	-5,026	-8.46%	No
<b>TOTAL</b>	<b>221,365</b>	<b>27,796</b>	<b>36,009</b>	<b>5,055</b>	<b>6,827</b>	<b>297,052</b>	<b>2</b>	<b>0.00%</b>	

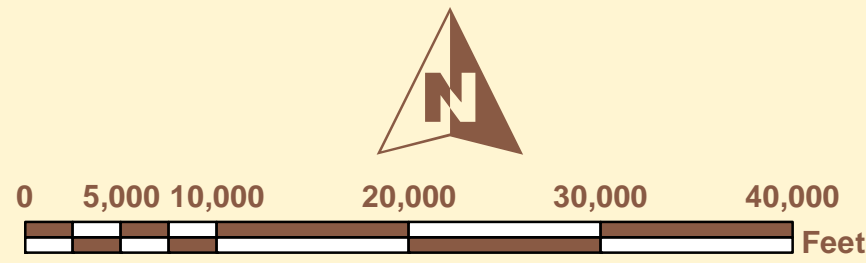
  

School Board Member District	Number of Elementary Schools	Number of Middle Schools	Number of High Schools	Total Number of School Floor Area (Sq. Ft.)	Total Number of FISH Student Stations	Total Number of Registered Voters	Voter Population (as Percent)	Total Floor Area Footage (as Percent)	Educational Student Stations (as Percent)
1	5	3	2	1,972,285	15,347	41,723	21.98%	28.08%	30.27%
2	5	2	1	1,137,842	8,167	52,152	27.47%	16.20%	16.11%
3	4	1	1	799,558	6,574	20,690	10.90%	11.38%	12.97%
4	6	2	2	1,606,339	10,753	41,684	21.95%	21.95%	22.87%
5	6	2	2	1,508,524	9,854	33,606	17.70%	21.47%	19.44%
<b>TOTAL</b>	<b>26</b>	<b>10</b>	<b>8</b>	<b>7,024,548</b>	<b>50,695</b>	<b>189,855</b>	<b>100.00%</b>	<b>100.00%</b>	<b>100.00%</b>

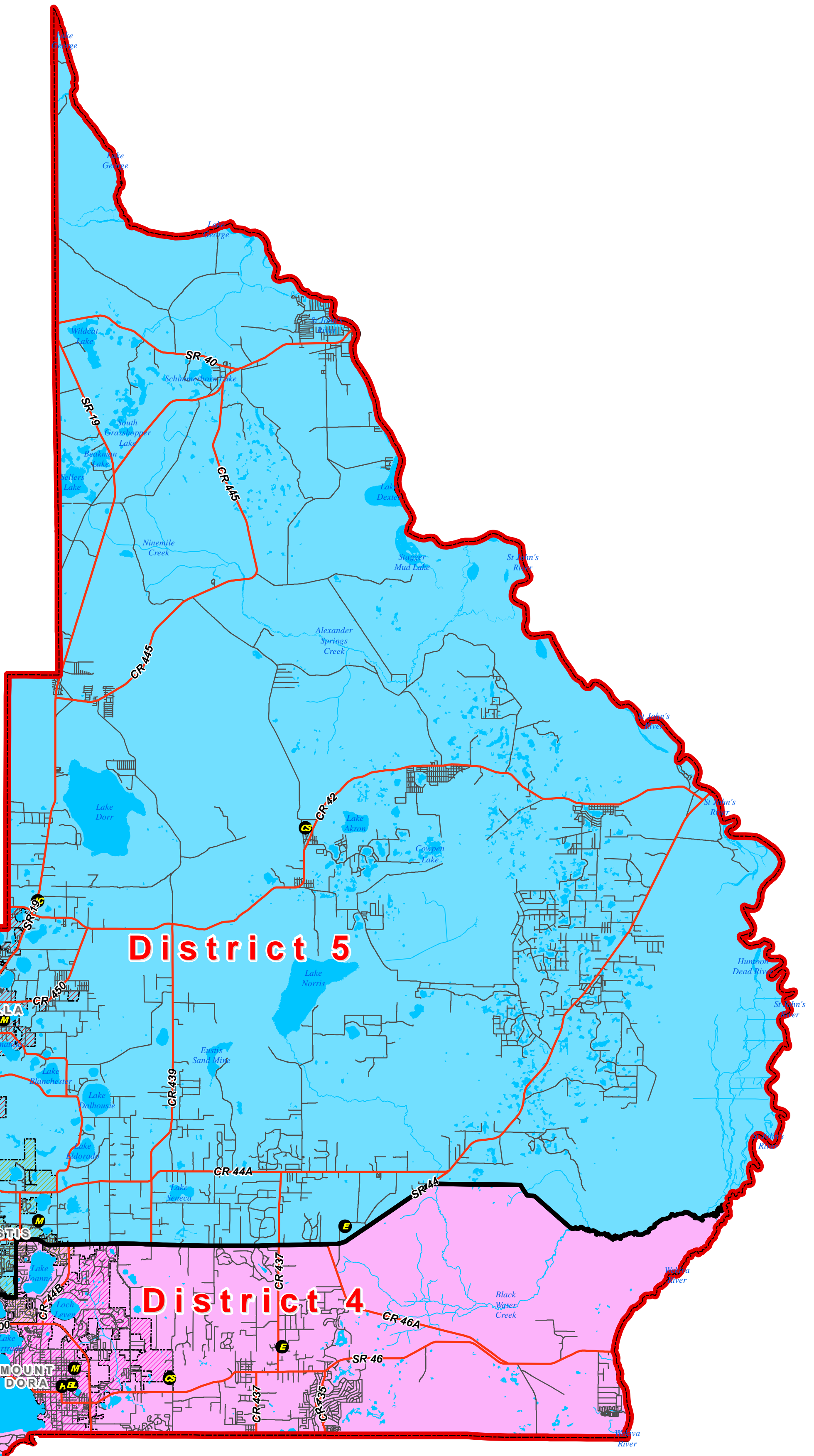
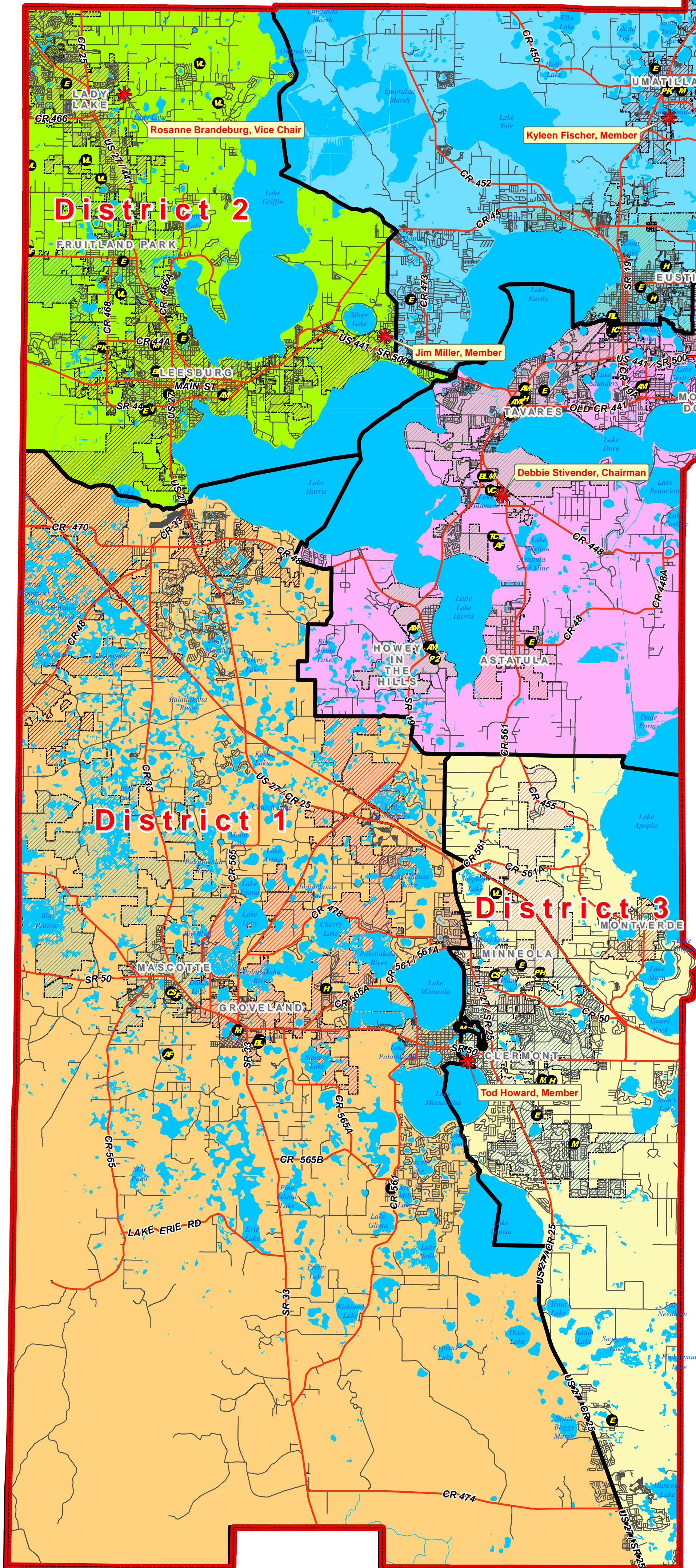
School Board Member District	White Population (as Percent)	Black Population (as Percent)	Hispanic Population (as Percent)	Asian Population (as Percent)	Multi-Racial Population (as Percent)	Elementary Schools (as Percent)	Middle Schools (as Percent)	High Schools (as Percent)
1	19.40%	22.72%	42.16%	36.26%	31.86%	19.23%	30.00%	25.00%
2	27.16%	29.68%	10.99%	19.35%	18.60%	19.23%	20.00%	12.50%
3	9.89%	14.71%	16.26%	19.62%	19.61%	15.38%	10.00%	12.50%
4	23.91%	16.85%	16.78%	15.43%	15.25%	23.08%	20.00%	25.00%
5	19.64%	16.04%	13.81%	9.34%	14.68%	23.08%	20.00%	25.00%
<b>TOTAL</b>	<b>100.00%</b>	<b>100.00%</b>	<b>100.00%</b>	<b>100.00%</b>	<b>100.00%</b>	<b>100.00%</b>	<b>100.00%</b>	<b>100.00%</b>

# Lake County Schools -- Board Member Districts OPTION 4



**Legend**

- Lake County Boundary** (Red line)
- Current School Board Members** (Red star)
- OPTION 4 -- School Board District Boundaries**
  - District 1 (Yellow)
  - District 2 (Green)
  - District 3 (White)
  - District 4 (Pink)
  - District 5 (Blue)
- Major Highways & Roads** (Red line)
- Minor Roads & Streets** (Grey line)
- Lakes and water bodies** (Blue area)
- Municipalities**
  - Astatula
  - Clermont
  - Eustis
  - Fruitland Park
  - Groveland
  - Howey-in-the-Hills
  - Lady Lake
  - Leesburg
  - Mascotte
  - Minneola
  - Montverde
  - Mount Dora
  - Tavares
  - Umatilla
- Educational & Administrative School Facilities**
  - Pre-K Center (PK)
  - Elementary School (E)
  - Middle School (M)
  - High School (H)
  - Conversion Charter School (CS)
  - Independent Charter School (ICS)
  - Vocational School (V)
  - Training Complex (TC)
  - Pre-K through 12th (P12)
  - Proposed High School (PHS)
  - Ag Farm (AF)
  - Administrative (A)
  - Bus Lot (BL)
  - Vacant (V)
  - Vacant Land (VL)



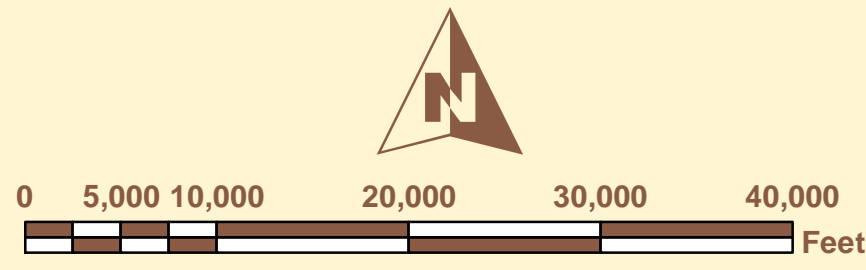
## Statistics by District Assignment

School Board Member District	Total White Population	Total Black Population	Total Hispanic Population	Total Asian Population	Total Multi-Racial Population	Total Population	Deviation in Optimum District Population (\$9,410)	Deviation in Optimum District Population (as Percent)	Population Allowance within 2.5% of Optimum
1	43,969	4,746	10,130	1,022	1,634	61,501	2,091	3.52%	No
2	47,043	7,885	3,515	844	1,116	60,403	993	1.67%	Yes
3	35,509	6,175	11,531	1,956	2,065	57,236	-2,174	-3.66%	No
4	46,855	4,778	6,145	861	1,021	59,660	250	0.42%	Yes
5	47,989	4,212	4,688	372	991	58,252	-1,158	-1.95%	Yes
<b>TOTAL</b>	<b>221,365</b>	<b>27,796</b>	<b>36,009</b>	<b>5,055</b>	<b>6,827</b>	<b>297,052</b>	<b>2</b>	<b>0.00%</b>	

School Board Member District	Number of Elementary Schools	Number of Middle Schools	Number of High Schools	Total Number of School Floor Area (Sq. Ft.)	Total Number of FISH Student Stations	Total Number of Registered Voters	Voter Population (as Percent)	Total Floor Area Footage (as Percent)	Educational Student Stations (as Percent)
1	5	2	1	1,271,399	9,633	40,630	21.40%	18.10%	19.00%
2	5	2	1	1,137,842	8,167	38,998	20.54%	16.20%	16.11%
3	4	2	2	1,500,444	12,288	35,866	18.89%	21.36%	24.24%
4	5	2	2	1,695,643	10,694	38,211	20.13%	24.14%	21.10%
5	7	2	2	1,419,220	9,913	36,150	19.04%	20.20%	19.55%
<b>TOTAL</b>	<b>26</b>	<b>10</b>	<b>8</b>	<b>7,024,548</b>	<b>50,695</b>	<b>189,855</b>	<b>100.00%</b>	<b>100.00%</b>	<b>100.00%</b>

School Board Member District	White Population (as Percent)	Black Population (as Percent)	Hispanic Population (as Percent)	Asian Population (as Percent)	Multi-Racial Population (as Percent)	Elementary Schools (as Percent)	Middle Schools (as Percent)	High Schools (as Percent)
1	19.86%	17.07%	28.13%	20.22%	23.93%	19.23%	20.00%	12.50%
2	21.25%	28.37%	9.76%	16.70%	16.35%	19.23%	20.00%	12.50%
3	16.04%	22.22%	32.02%	38.69%	30.25%	15.39%	20.00%	25.00%
4	21.17%	17.19%	17.07%	17.03%	14.96%	19.23%	20.00%	25.00%
5	21.68%	15.15%	13.02%	7.36%	14.52%	26.92%	20.00%	25.00%
<b>TOTAL</b>	<b>100.00%</b>	<b>100.00%</b>	<b>100.00%</b>	<b>100.00%</b>	<b>100.00%</b>	<b>100.00%</b>	<b>100.00%</b>	<b>100.00%</b>

# Lake County Schools -- Board Member Districts OPTION 5



**Legend**

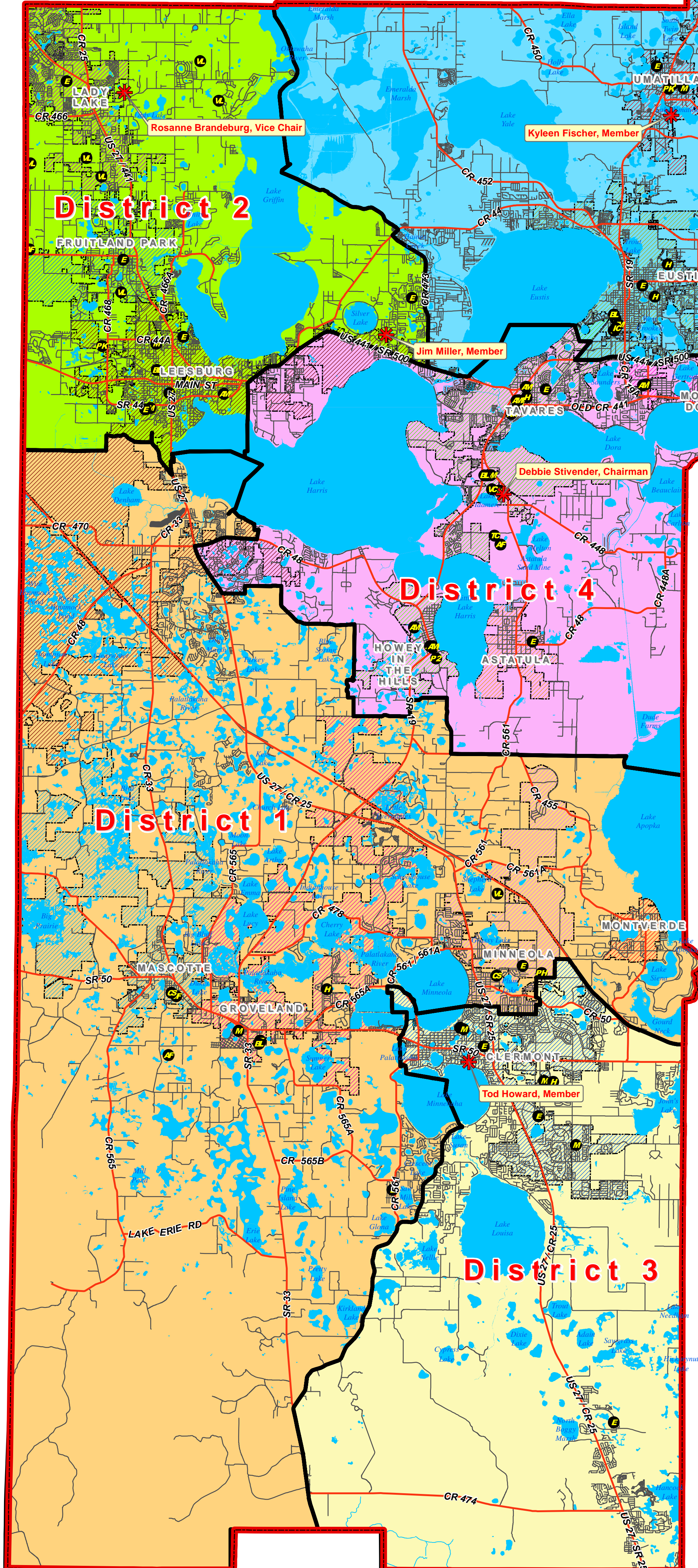
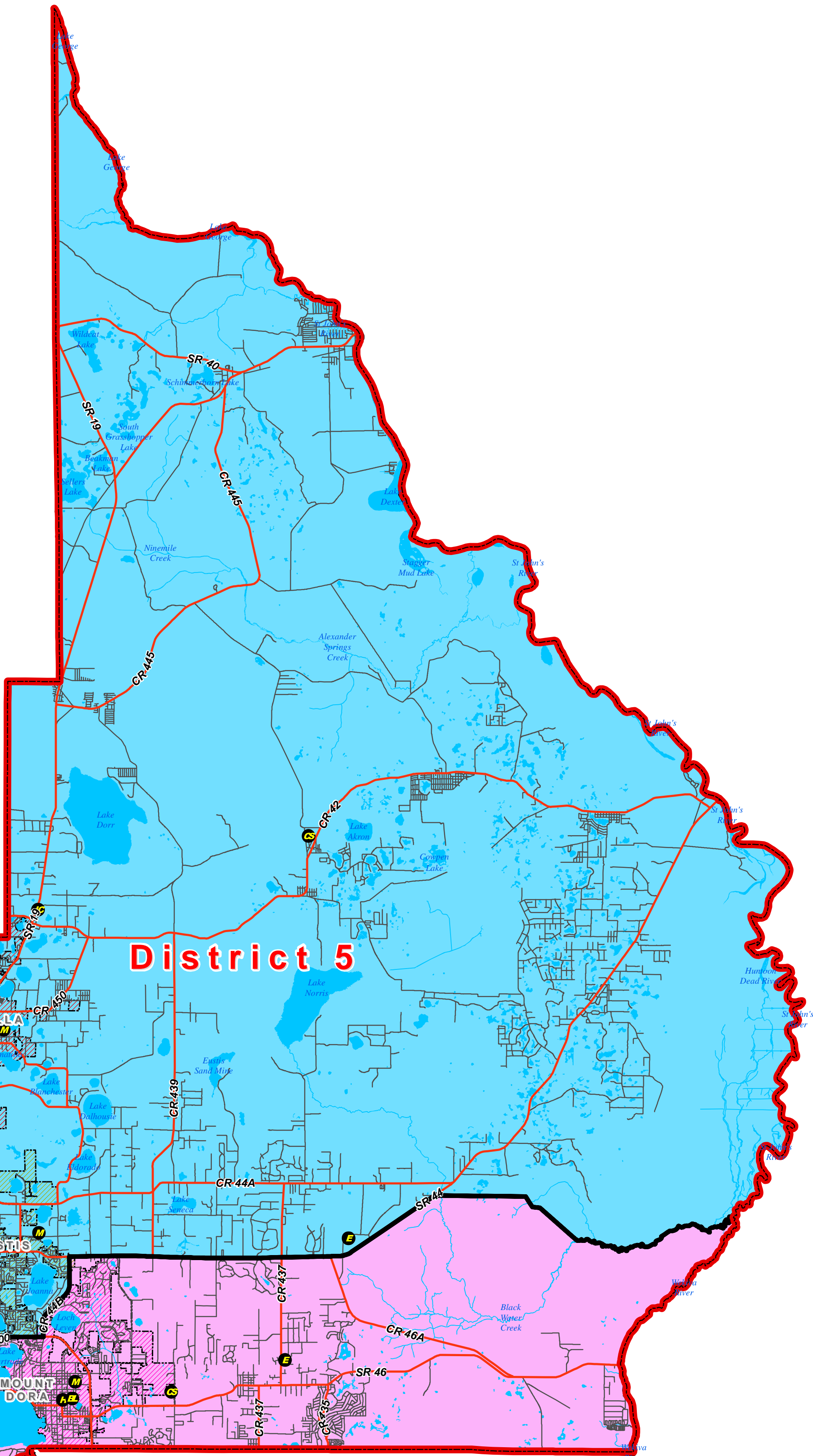
- Lake County Boundary** (Red line)
- Current School Board Members** (Red star)
- OPTION 5 -- School Board District Boundaries**
  - District 1 (Yellow)
  - District 2 (Green)
  - District 3 (White)
  - District 4 (Pink)
  - District 5 (Blue)
- Major Highways & Roads** (Red line)
- Minor Roads & Streets** (Grey line)
- Lakes and water bodies** (Blue area)

**Municipalities**

- Astatula
- Clermont
- Eustis
- Fruitland Park
- Groveland
- Howey-in-the-Hills
- Lady Lake
- Leesburg
- Mascotte
- Minneola
- Montverde
- Mount Dora
- Tavares
- Umatilla

**Educational & Administrative School Facilities**

- Pre-K Center
- Elementary School
- Middle School
- High School
- Conversion Charter School
- Independent Charter School
- Vocational School
- Training Complex
- Pre-K through 12th
- Proposed High School
- Ag Farm
- Administrative
- Bus Lot
- Vacant
- Vacant Land



### Statistics by District Assignment

School Board Member District	Total White Population	Total Black Population	Total Hispanic Population	Total Asian Population	Total Multi-Racial Population	Total Population	Deviation in Optimum District Population (\$9,410)	Deviation in Optimum District Population (as Percent)	Population Allowance within 2.5% of Optimum
1	42,346	4,550	9,269	984	1,608	58,757	-653	-1.10%	Yes
2	47,348	7,275	3,309	758	1,074	59,764	354	0.60%	Yes
3	35,462	6,308	12,368	1,951	2,090	58,179	-1,231	-2.07%	Yes
4	47,322	5,167	5,891	938	1,000	60,318	908	1.53%	Yes
5	48,887	4,496	5,172	424	1,055	60,034	624	1.05%	Yes
<b>TOTAL</b>	<b>221,365</b>	<b>27,796</b>	<b>36,009</b>	<b>5,055</b>	<b>6,827</b>	<b>297,052</b>	<b>2</b>	<b>0.00%</b>	

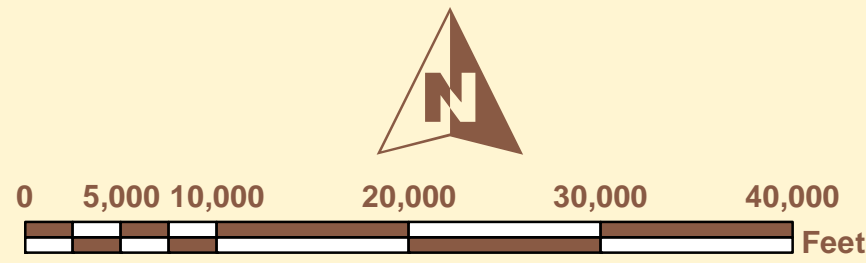
  

School Board Member District	Number of Elementary Schools	Number of Middle Schools	Number of High Schools	Total Number of School Floor Area (Sq. Ft.)	Total Number of FISH Student Stations	Total Number of Registered Voters	Voter Population (as Percent)	Total Floor Area Square Footage (as Percent)	Educational Student Stations (as Percent)
1	5	1	2	1,476,325	11,155	37,899	19.96%	21.02%	22.00%
2	6	2	1	1,278,874	9,209	39,371	20.74%	18.21%	18.17%
3	4	3	1	1,295,518	10,766	36,547	19.25%	18.44%	21.24%
4	5	2	2	1,465,307	9,711	39,046	20.57%	20.86%	19.16%
5	6	2	2	1,508,524	9,854	36,992	19.48%	21.48%	19.44%
<b>TOTAL</b>	<b>26</b>	<b>10</b>	<b>8</b>	<b>7,024,548</b>	<b>50,695</b>	<b>189,855</b>	<b>100.00%</b>	<b>100.00%</b>	<b>100.00%</b>

School Board Member District	White Population (as Percent)	Black Population (as Percent)	Hispanic Population (as Percent)	Asian Population (as Percent)	Multi-Racial Population (as Percent)	Elementary Schools (as Percent)	Middle Schools (as Percent)	High Schools (as Percent)
1	19.13%	16.37%	25.74%	19.47%	23.55%	19.23%	10.00%	25.00%
2	21.39%	26.17%	9.19%	15.00%	15.73%	23.08%	20.00%	12.50%
3	16.02%	22.69%	34.35%	38.60%	30.61%	15.39%	30.00%	12.50%
4	21.38%	18.59%	16.36%	18.56%	14.65%	19.23%	20.00%	25.00%
5	22.08%	16.18%	14.36%	8.39%	15.45%	23.08%	20.00%	25.00%
<b>TOTAL</b>	<b>100.00%</b>	<b>100.00%</b>	<b>100.00%</b>	<b>100.00%</b>	<b>100.00%</b>	<b>100.00%</b>	<b>100.00%</b>	<b>100.00%</b>

# Lake County Schools -- Board Member Districts OPTION 6



**Legend**

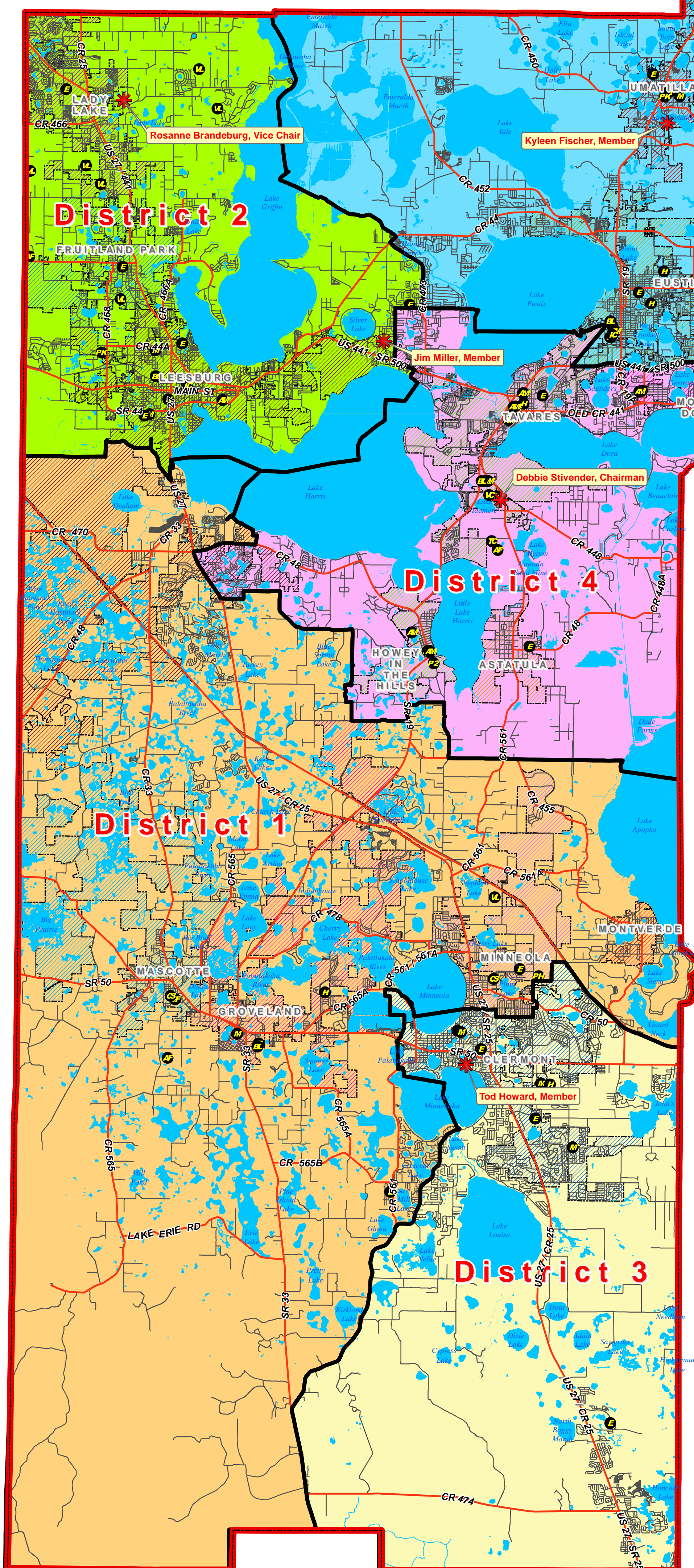
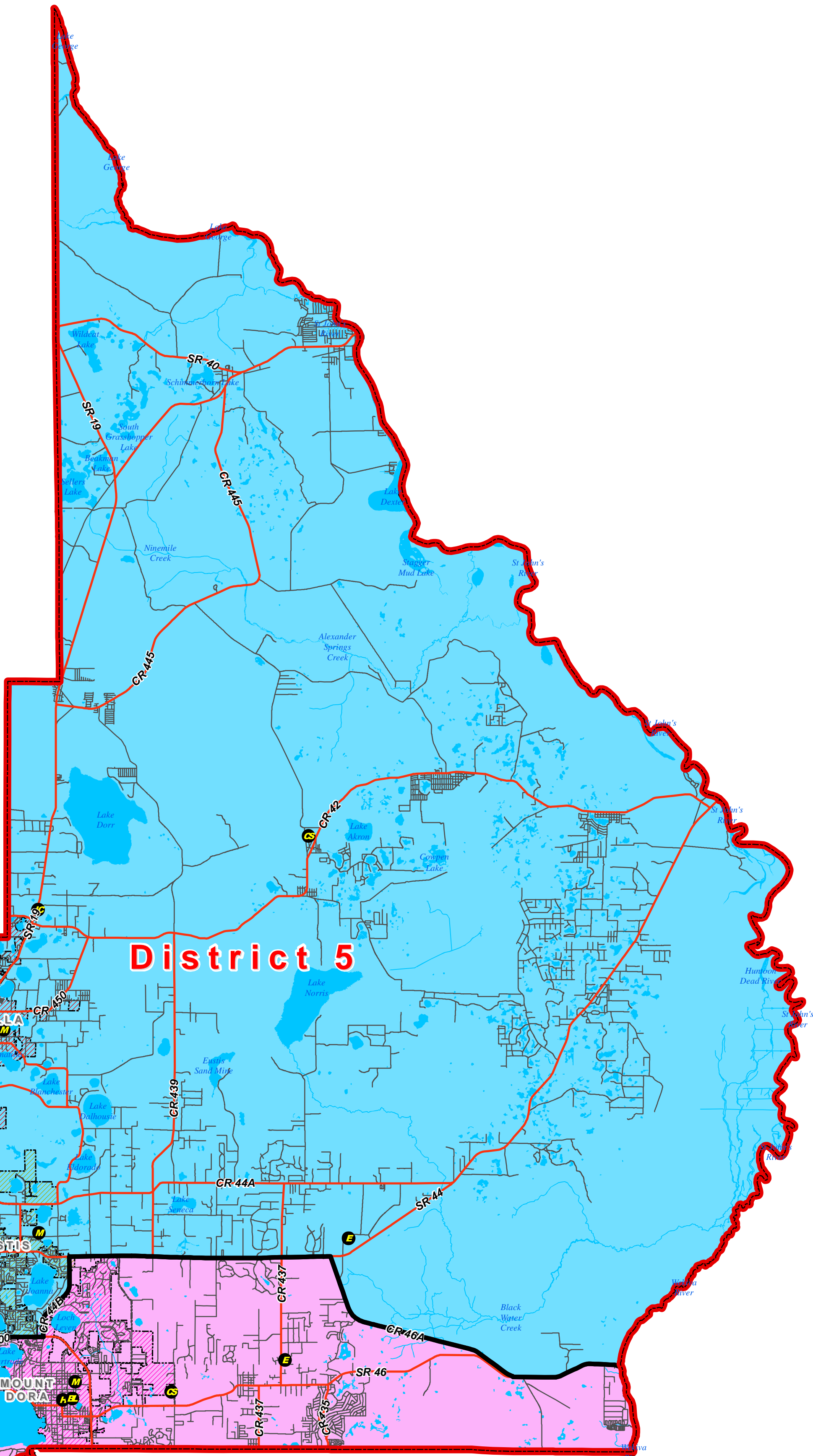
- Lake County Boundary** (Red line)
- Current School Board Members** (Red star)
- OPTION 6 -- School Board District Boundaries** (Colored outlines)
- District 1** (Yellow)
- District 2** (Green)
- District 3** (White)
- District 4** (Pink)
- District 5** (Blue)
- Major Highways & Roads** (Red line)
- Minor Roads & Streets** (Grey line)
- Lakes and water bodies** (Blue area)

**Municipalities**

- Astatula
- Clermont
- Eustis
- Fruitland Park
- Groveland
- Howey-in-the-Hills
- Lady Lake
- Leesburg
- Mascotte
- Minneola
- Montverde
- Mount Dora
- Tavares
- Umatilla

**Educational & Administrative School Facilities**

- Pre-K Center
- Elementary School
- Middle School
- High School
- Conversion Charter School
- Independent Charter School
- Vocational School
- Training Complex
- Pre-K through 12th
- Proposed High School
- Ag Farm
- Administrative
- Bus Lot
- Vacant
- Vacant Land



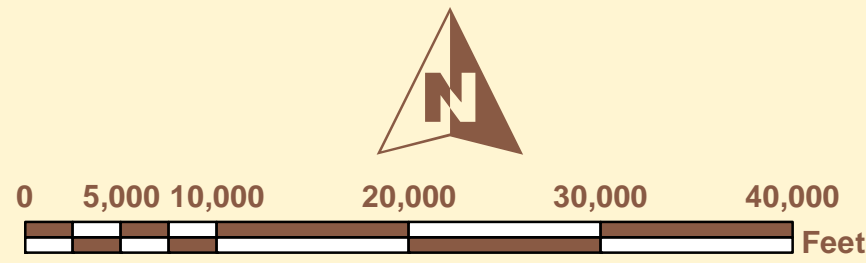
## Statistics by District Assignment

School Board Member District	Total White Population	Total Black Population	Total Hispanic Population	Total Asian Population	Total Multi-Racial Population	Total Population	Deviation in Optimum District Population (\$9,410)	Deviation in Optimum District Population (as Percent)	Population Allowance within 2.5% of Optimum
1	42,346	4,550	9,269	984	1,608	58,757	-653	-1.10%	Yes
2	47,375	7,912	3,523	853	1,123	60,786	1,376	2.32%	Yes
3	35,462	6,308	12,368	1,951	2,090	58,179	-1,231	-2.07%	Yes
4	48,184	4,551	5,750	845	974	60,304	894	1.51%	Yes
5	47,998	4,475	5,099	422	1,032	59,026	-384	-0.65%	Yes
<b>TOTAL</b>	<b>221,365</b>	<b>27,796</b>	<b>36,009</b>	<b>5,055</b>	<b>6,827</b>	<b>297,052</b>	<b>2</b>	<b>0.00%</b>	

School Board Member District	Number of Elementary Schools	Number of Middle Schools	Number of High Schools	Total Number of School Floor Area (Sq. Ft.)	Total Number of FISH Student Stations	Total Number of Registered Voters	Voter Population (as Percent)	Total Floor Area Square Footage (as Percent)	Educational Student Stations (as Percent)
1	5	1	2	1,476,325	11,155	37,899	19.96%	21.02%	22.00%
2	6	2	1	1,278,874	9,209	39,418	20.76%	18.21%	18.17%
3	4	3	1	1,295,518	10,766	36,547	19.25%	18.44%	21.24%
4	5	2	2	1,465,307	9,711	39,606	20.86%	20.86%	19.16%
5	6	2	2	1,508,524	9,854	36,385	19.17%	21.48%	19.44%
<b>TOTAL</b>	<b>26</b>	<b>10</b>	<b>8</b>	<b>7,024,548</b>	<b>50,695</b>	<b>189,855</b>	<b>100.00%</b>	<b>100.00%</b>	<b>100.00%</b>

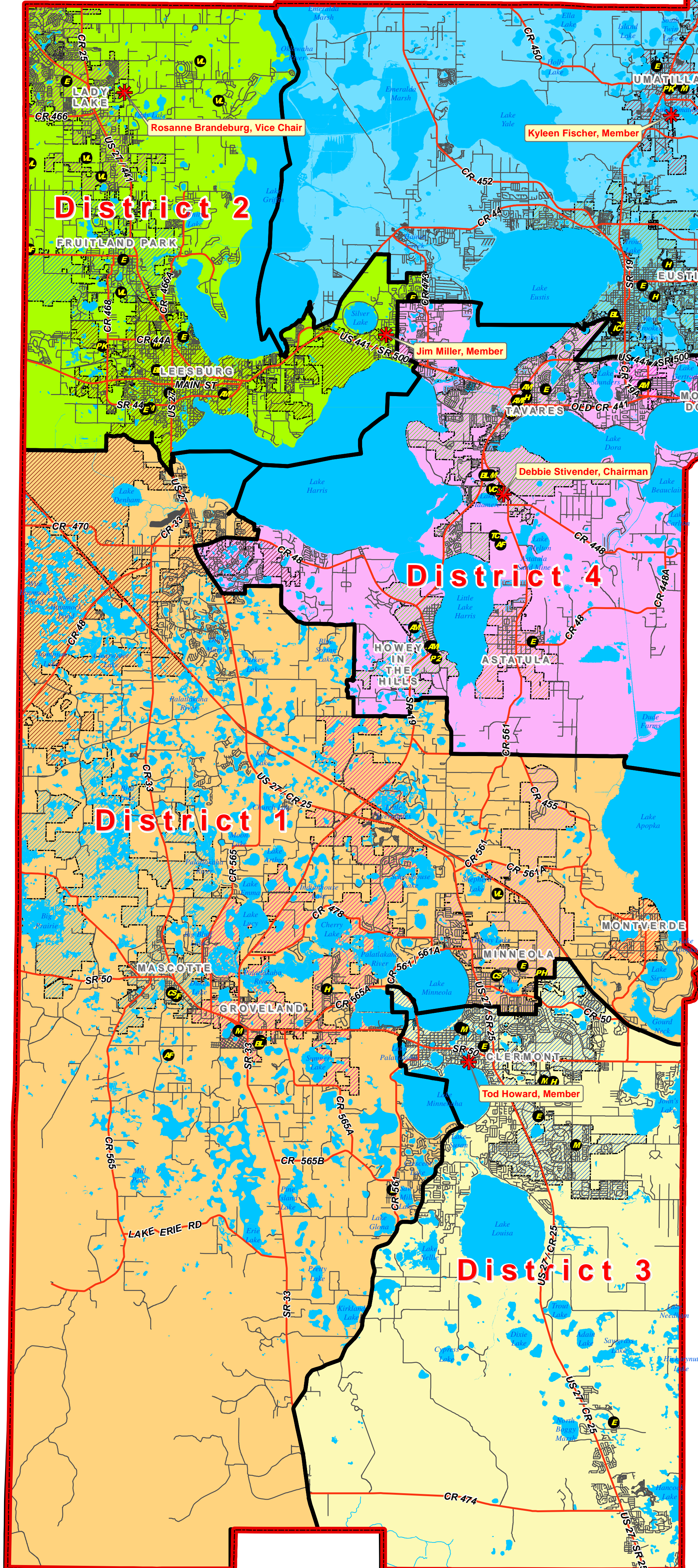
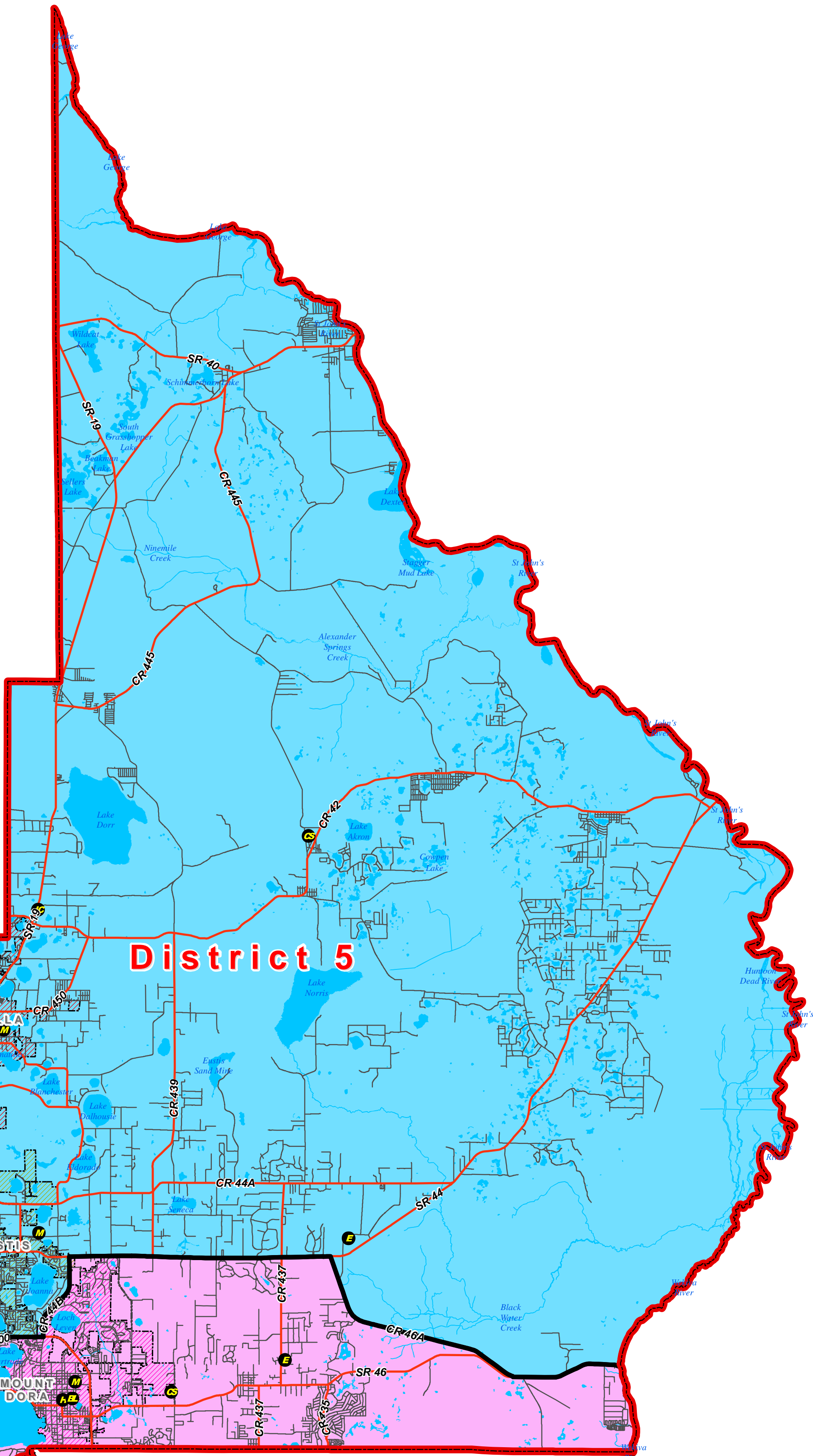
School Board Member District	White Population (as Percent)	Black Population (as Percent)	Hispanic Population (as Percent)	Asian Population (as Percent)	Multi-Racial Population (as Percent)	Elementary Schools (as Percent)	Middle Schools (as Percent)	High Schools (as Percent)
1	19.13%	16.37%	25.74%	19.47%	23.55%	19.23%	10.00%	25.00%
2	21.40%	28.47%	9.78%	16.87%	16.45%	23.08%	20.00%	12.50%
3	16.02%	22.69%	34.35%	38.60%	30.61%	15.39%	30.00%	12.50%
4	21.77%	16.37%	15.97%	16.72%	14.27%	19.23%	20.00%	25.00%
5	21.68%	16.10%	14.16%	8.35%	15.12%	23.08%	20.00%	25.00%
<b>TOTAL</b>	<b>100.00%</b>	<b>100.00%</b>	<b>100.00%</b>	<b>100.00%</b>	<b>100.00%</b>	<b>100.00%</b>	<b>100.00%</b>	<b>100.00%</b>

# Lake County Schools -- Board Member Districts OPTION 7



**Legend**

- Lake County Boundary** (Red line)
- Current School Board Members** (Red star)
- OPTION 7 -- School Board District Boundaries** (Color-coded areas)
- Municipalities** (Hatched patterns): Astatula, Clermont, Fruitland Park, Groveland, Howey-in-the-Hills, Lady Lake, Leesburg, Mascotte, Minneola, Montverde, Mount Dora, Tavares, Umatilla
- Educational & Administrative School Facilities** (Circled letters): Pre-K Center, Elementary School, Middle School, High School, Conversion Charter School, Independent Charter School, Vocational School, Training Complex, Pre-K through 12th, Proposed High School, Ag Farm, Administrative, Bus Lot, Vacant, Vacant Land
- Major Highways & Roads** (Red line)
- Minor Roads & Streets** (Grey line)
- Lakes and water bodies** (Blue area)



### Statistics by District Assignment

School Board Member District	Total White Population	Total Black Population	Total Hispanic Population	Total Asian Population	Total Multi-Racial Population	Total Population	Deviation in Optimum District Population (\$9,410)	Deviation in Optimum District Population (as Percent)	Population Allowance within 2.5% of Optimum
1	42,346	4,550	9,269	984	1,608	58,757	-653	-1.10%	Yes
2	46,570	7,828	3,493	841	1,105	59,837	427	0.72%	Yes
3	35,462	6,308	12,368	1,951	2,090	58,179	-1,231	-2.07%	Yes
4	48,184	4,551	5,750	845	974	60,304	894	1.50%	Yes
5	48,803	4,559	5,129	434	1,050	59,975	565	0.95%	Yes
<b>TOTAL</b>	<b>221,365</b>	<b>27,796</b>	<b>36,009</b>	<b>5,055</b>	<b>6,827</b>	<b>297,052</b>	<b>2</b>	<b>0.00%</b>	

School Board Member District	Number of Elementary Schools	Number of Middle Schools	Number of High Schools	Total Number of School Floor Area (Sq. Ft.)	Total Number of FISH Student Stations	Total Number of Registered Voters	Voter Population (as Percent)	Total Floor Area Square Footage (as Percent)	Educational Student Stations (as Percent)
1	5	1	2	1,476,325	11,155	37,899	19.96%	21.02%	22.00%
2	6	2	1	1,278,874	9,209	38,749	20.41%	18.21%	18.17%
3	4	3	1	1,295,518	10,766	36,547	19.25%	18.44%	21.24%
4	5	2	2	1,465,307	9,711	39,606	20.86%	20.86%	19.16%
5	6	2	2	1,508,524	9,854	37,054	19.52%	21.48%	19.44%
<b>TOTAL</b>	<b>26</b>	<b>10</b>	<b>8</b>	<b>7,024,548</b>	<b>50,695</b>	<b>189,855</b>	<b>100.00%</b>	<b>100.00%</b>	<b>100.00%</b>

School Board Member District	White Population (as Percent)	Black Population (as Percent)	Hispanic Population (as Percent)	Asian Population (as Percent)	Multi-Racial Population (as Percent)	Elementary Schools (as Percent)	Middle Schools (as Percent)	High Schools (as Percent)
1	19.13%	16.37%	25.74%	19.47%	23.55%	19.23%	10.00%	25.00%
2	21.04%	28.16%	9.70%	16.64%	16.19%	23.08%	20.00%	12.50%
3	16.02%	22.69%	34.35%	38.60%	30.61%	15.38%	30.00%	12.50%
4	21.77%	16.37%	15.97%	16.72%	14.27%	19.23%	20.00%	25.00%
5	22.05%	16.40%	14.24%	8.59%	15.38%	23.08%	20.00%	25.00%
<b>TOTAL</b>	<b>100.00%</b>	<b>100.00%</b>	<b>100.00%</b>	<b>100.00%</b>	<b>100.00%</b>	<b>100.00%</b>	<b>100.00%</b>	<b>100.00%</b>