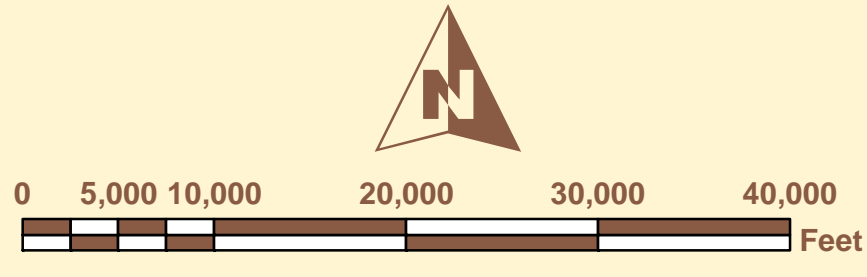
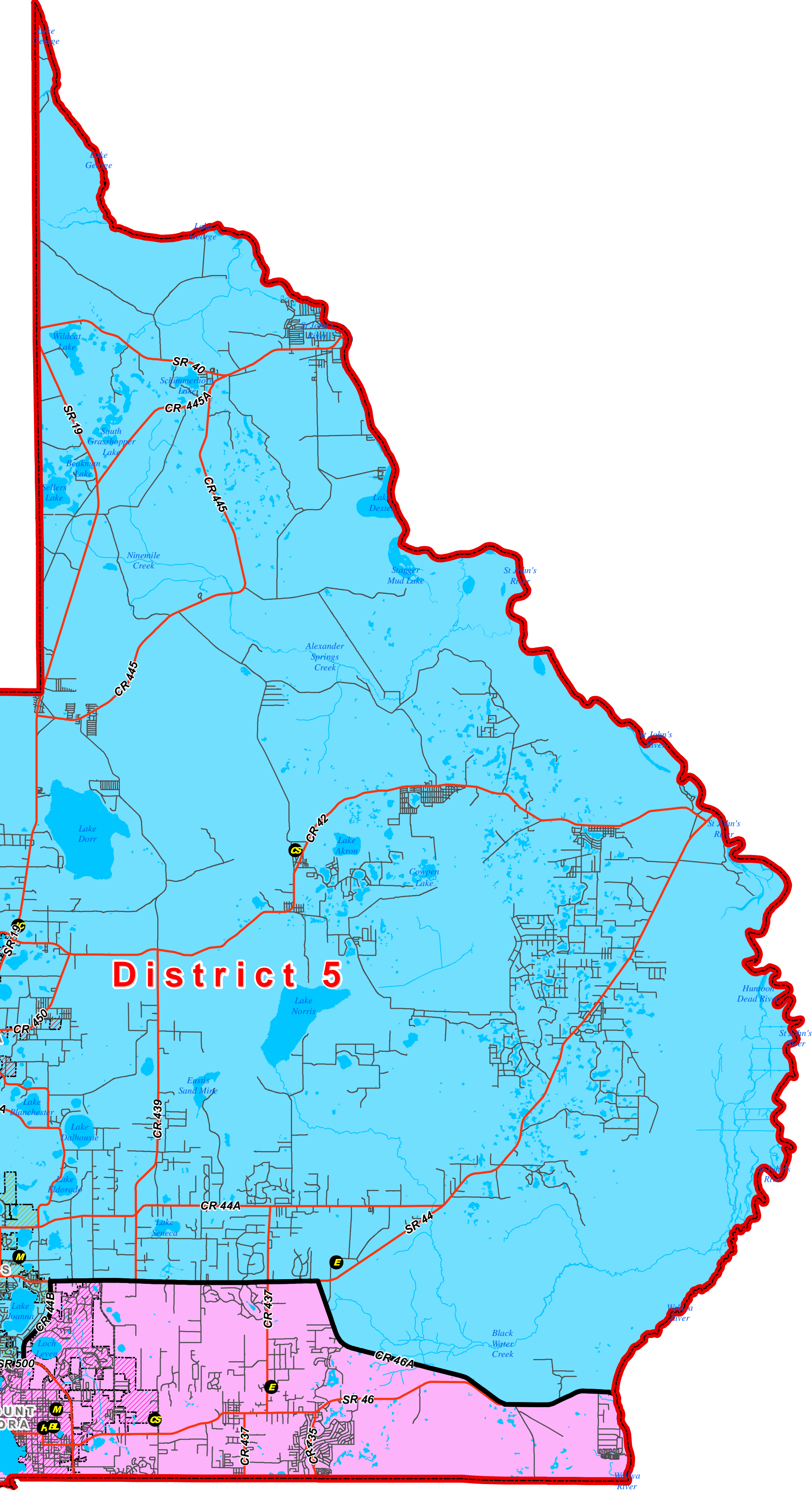
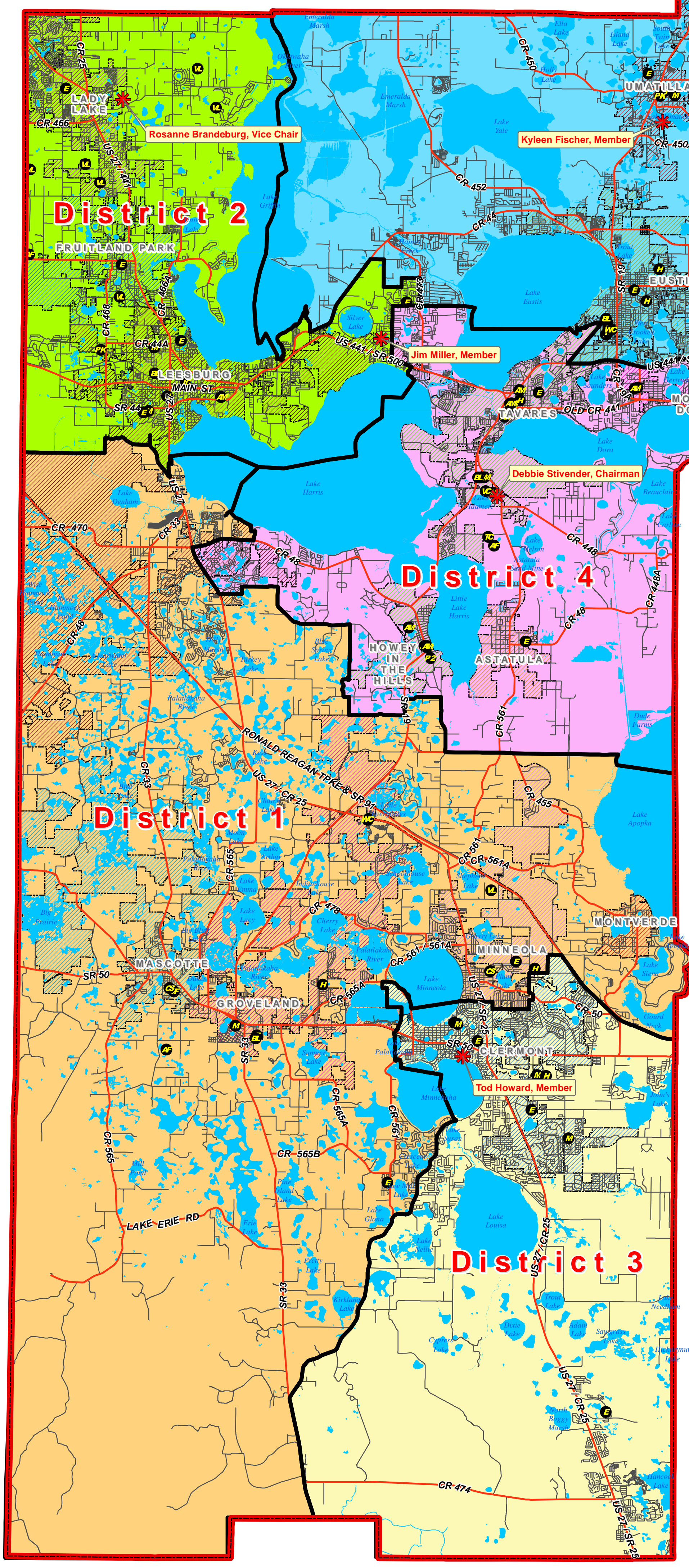


Lake County Schools -- Board Member Districts Proposed 2011 District Map



Legend		
	Lake County Boundary	
	Current School Board Members	
	Proposed 2011 -- School Board District Boundaries	
	District 1	
	District 2	
	District 3	
	District 4	
	District 5	
	Major Highways & Roads	
	Minor Roads & Streets	
	Lakes and water bodies	
	Municipalities	
	Astatula	
	Clermont	
	Eustis	
	Fruitland Park	
	Groveland	
	Howey-in-the-Hills	
	Lady Lake	
	Leesburg	
	Mascotte	
	Minneola	
	Montverde	
	Mount Dora	
	Tavares	
	Umatilla	
	Educational & Administrative School Facilities	
	Administrative	
	Pre-K Center	
	Elementary School	
	Middle School	
	High School	
	Conversion Charter School	
	Independent Charter School	
	Vocational School	
	Training Complex	
	Pre-K through 12th	
	Proposed High School	
	Ag Farm	
	Main Transportation Center	
	Bus Lot	
	Temporary Use	
	Vacant	
	Vacant Land	
	Wellness Center	



Statistics by District Assignment

School Board Member District	Total White Population	Total Black Population	Total Hispanic Population	Total Asian Population	Total Multi-Racial Population	Total Population	Deviation in Optimum District Population (\$9,410)	Deviation in Optimum District Population (as Percent)	Population Allowance within 2.5% of Optimum
1	42,346	4,550	9,269	984	1,608	58,757	-653	-1.10%	Yes
2	46,570	7,828	3,493	841	1,105	59,837	427	0.72%	Yes
3	35,462	6,308	12,368	1,951	2,090	58,179	-1,231	-2.07%	Yes
4	48,184	4,551	5,750	845	974	60,304	894	1.50%	Yes
5	48,803	4,559	5,129	434	1,050	59,975	565	0.95%	Yes
TOTAL	221,365	27,796	36,009	5,055	6,827	297,052	2	0.00%	

School Board Member District	Number of Elementary Schools	Number of Middle Schools	Number of High Schools	Total Number of School Floor Area (Sq. Ft.)	Total Number of FISH Student Stations	Total Number of Registered Voters	Voter Population (as Percent)	Total Floor Area Square Footage (as Percent)	Educational Student Stations (as Percent)
1	5	1	2	1,476,325	11,155	37,899	19.96%	21.02%	22.00%
2	6	2	1	1,278,874	9,209	38,749	20.41%	18.21%	18.17%
3	4	3	1	1,295,518	10,766	36,547	19.25%	18.44%	21.24%
4	5	2	2	1,465,307	9,711	39,606	20.86%	20.86%	19.16%
5	6	2	2	1,508,524	9,854	37,054	19.52%	21.48%	19.44%
TOTAL	26	10	8	7,024,548	50,695	189,855	100.00%	100.00%	100.00%

School Board Member District	White Population (as Percent)	Black Population (as Percent)	Hispanic Population (as Percent)	Asian Population (as Percent)	Multi-Racial Population (as Percent)	Elementary Schools (as Percent)	Middle Schools (as Percent)	High Schools (as Percent)
1	19.13%	16.37%	25.74%	19.47%	23.55%	19.23%	10.00%	25.00%
2	21.04%	28.16%	9.70%	16.64%	16.19%	23.08%	20.00%	12.50%
3	16.02%	22.69%	34.35%	38.60%	30.61%	15.38%	30.00%	12.50%
4	21.77%	16.37%	15.97%	16.72%	14.27%	19.23%	20.00%	25.00%
5	22.05%	16.40%	14.24%	8.59%	15.38%	23.08%	20.00%	25.00%
TOTAL	100.00%	100.00%	100.00%	100.00%	100.00%	100.00%	100.00%	100.00%