

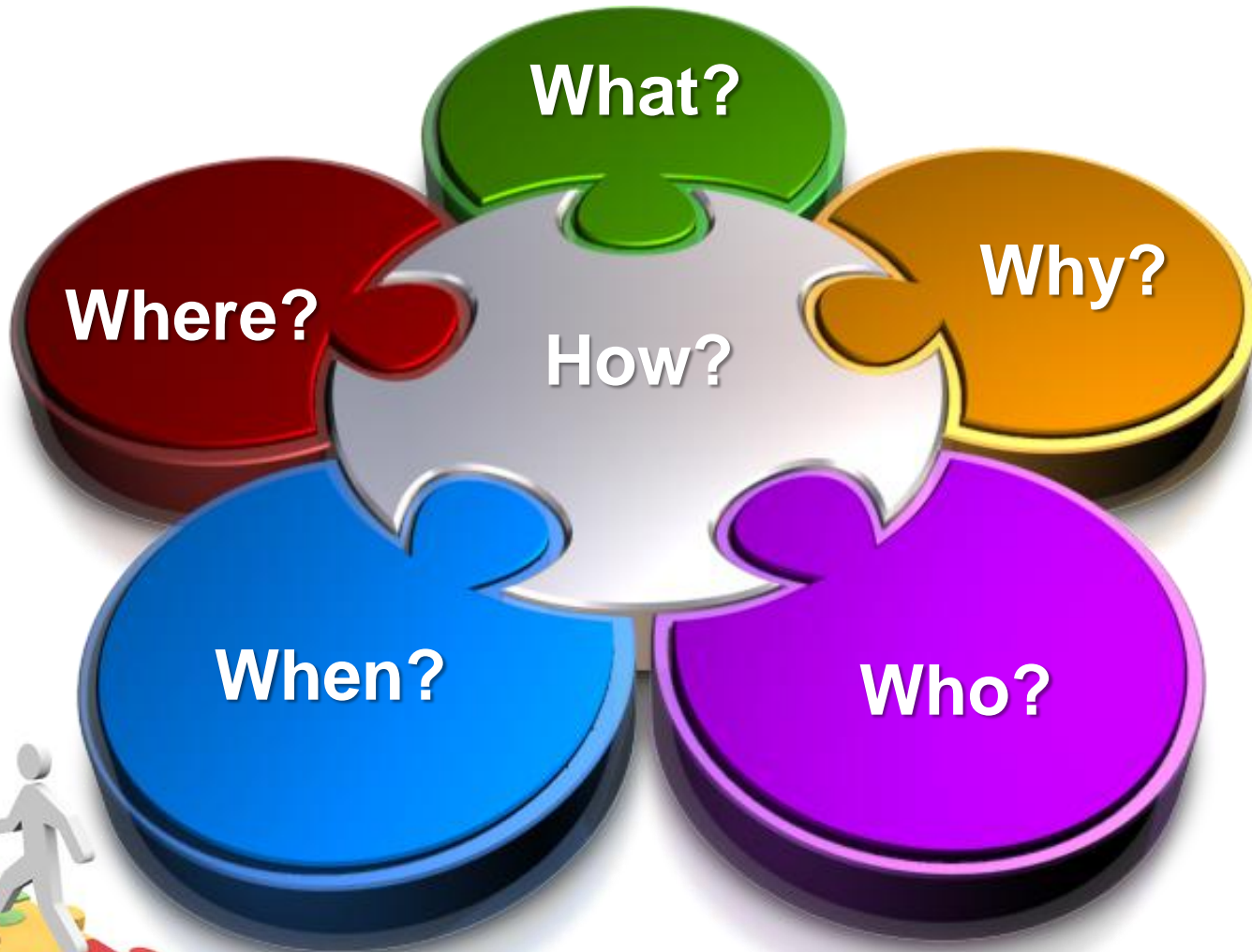
**“Public participation is too often a formality of information delivery rather than an honest seeking of the public’s point of view. People get that fact quickly, and the result can be far worse than not involving them at all in a planning process. On the other hand, a responsible group of citizens can represent diverse expertise and points of view that thoroughly enrich a school district facilities planning process.” – *Kelley Carey***



# The Puzzling Piece of Public Participation

Harry Fix & Kelly Randall  
Lake County Schools

# The Big Puzzle Picture of Public Participation



# The Big Puzzle Picture of Public Participation



# First Puzzle Piece – What?

What is public participation?

- **Involvement**
- **Information**
- **Communication**



**In decision making**



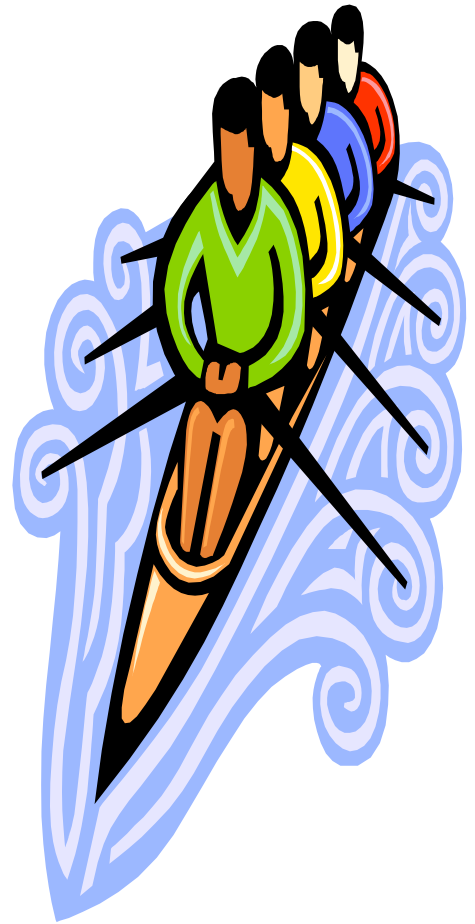
# Second Puzzle Piece – Why?

- **Support (consensus)**
- **Accountability**
- **Credibility**
- **Knowledge**



# Third Puzzle Piece – Who?

- **Parents**
- **Advocacy Groups**
- **District Staff**
- **Development Community**
- **Local Government**
- **Everyone else**
  - Taxpayers
  - Other educational agencies





**“A plan already cast in concrete before public discussion makes a mockery out of public involvement.”**

**– *Kelley Carey***



# Fourth Puzzle Piece – When?

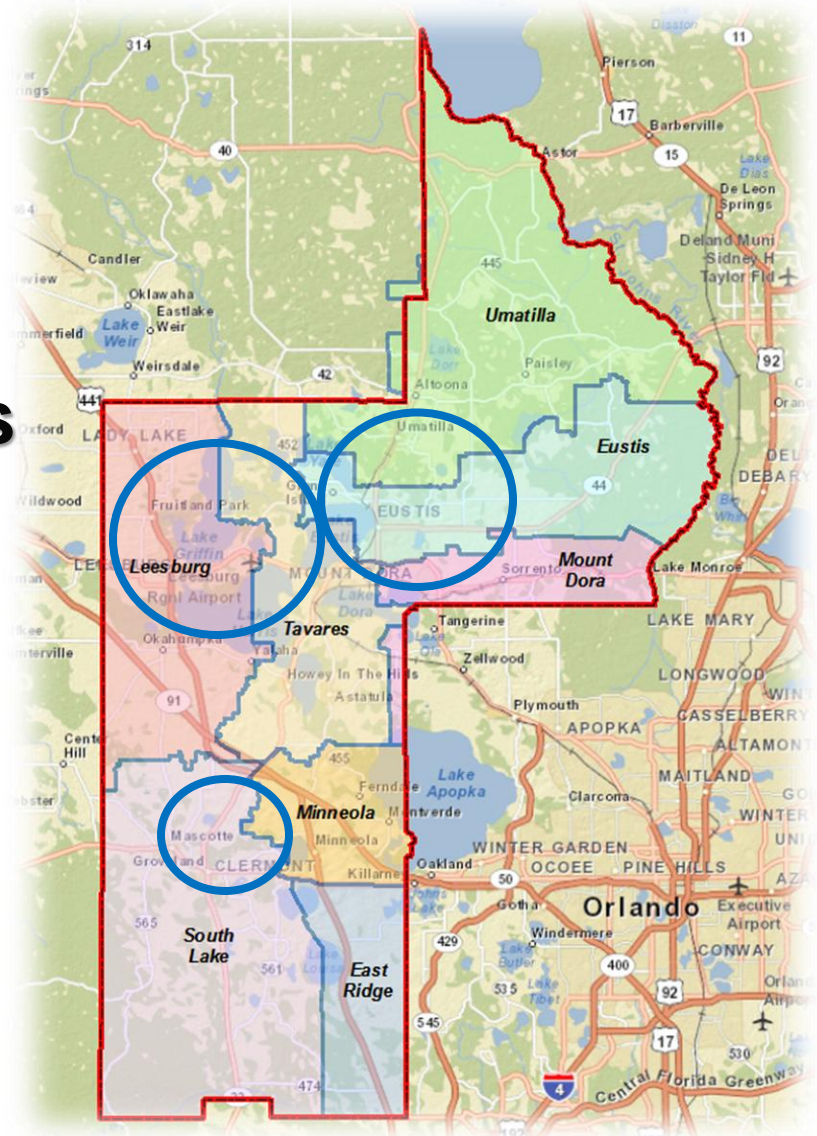
- **Good Data**
- **Early on**
- **Through out**
  - **Public hearings are too late!**



# Fifth Puzzle Piece – Where?

## Lake County Schools A Case Study

- Facilities Assessments
- Local Area Focus
- Advisory Committees

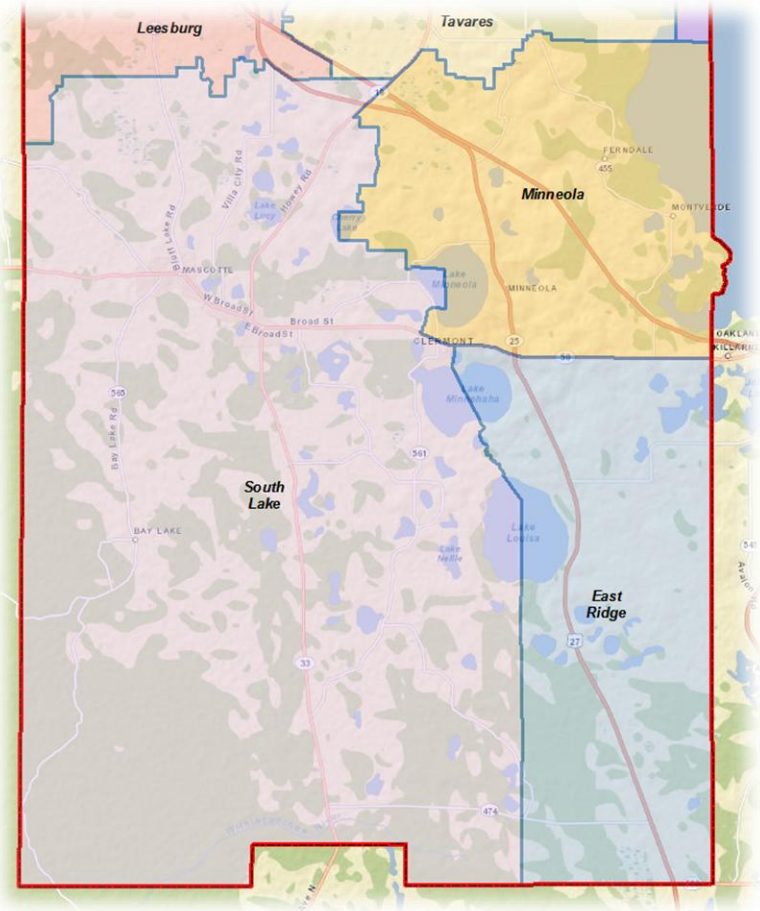


# Fifth Puzzle Piece – How?

## South County Long-range Planning Committee

### Facilities Considered

- **Clermont Elem**
- **Cypress Ridge Elem**
- **Clermont Middle**



# Fifth Puzzle Piece – How?

- **Background Information**
- **Good data:**
  - **School Specific**
  - **Demographics**
  - **Financial**
- **Tours**
- **Concept Plans**



# **Fifth Puzzle Piece – How?**

- **SAC/PTO Review**
- **Committee Feedback**
- **Concept Plan Revision**
- **Final Report**
- **School Board Acceptance**

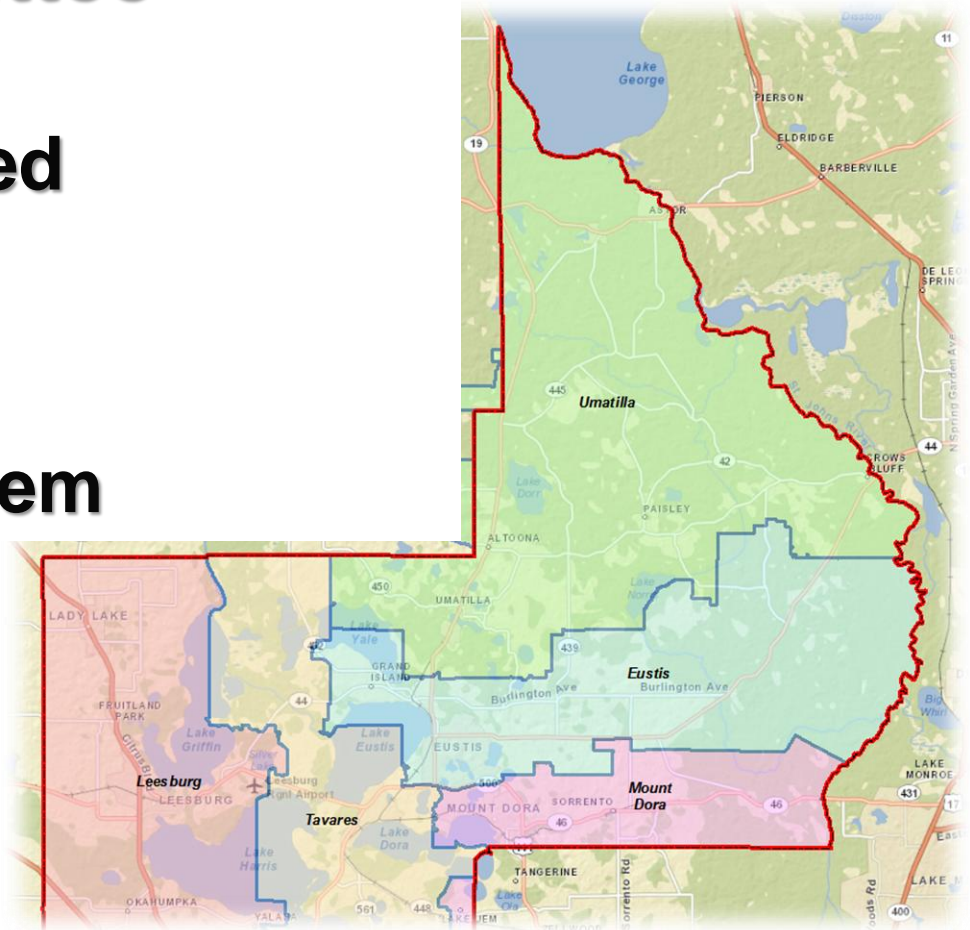


# Fifth Puzzle Piece – How?

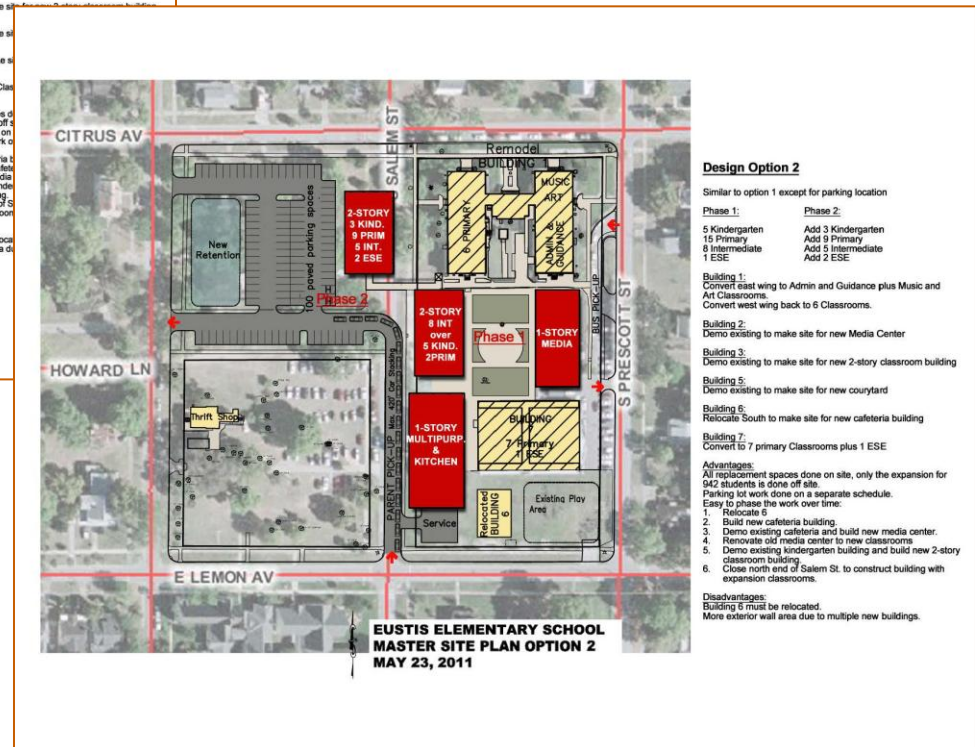
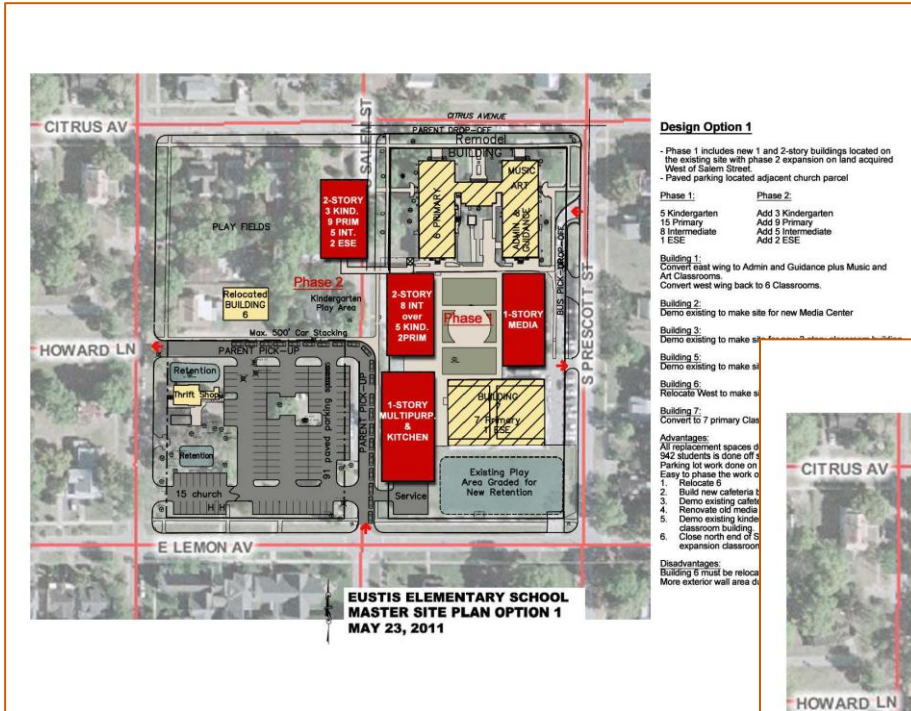
## Northeast Long-range Planning Committee

### Facilities Considered

- Curtright Center
- Eustis Elem
- Eustis Heights Elem
- Umatilla Middle



# Fifth Puzzle Piece – How?

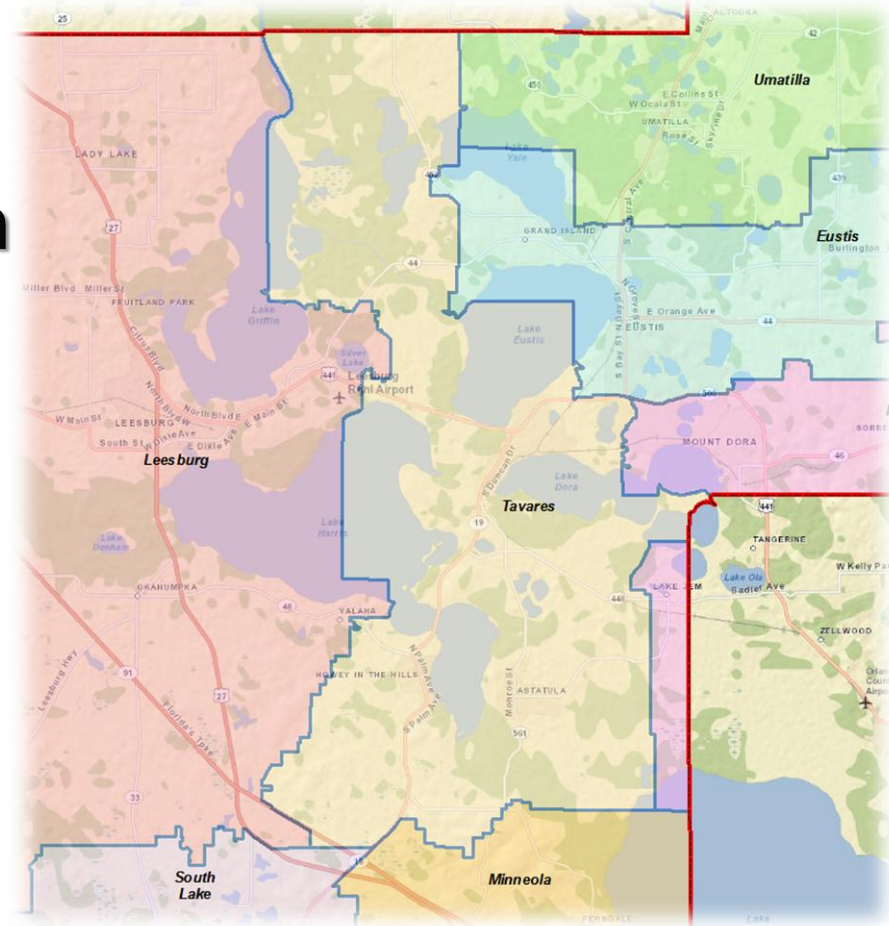


# Fifth Puzzle Piece – How?

## Northwest Long-range Planning Committee

### Facilities Considered

- Beverly Shores Elem
- Fruitland Park Elem
- Oak Park Middle
- Rimes ELC
- Treadway Elem





# Fifth Puzzle Piece – How?



# Putting the Puzzle Together

(Where do we go from here?)

## Next steps . . .

- **Recommendations adopted**
- **Long-range CIP updated**
- **Extraordinary funding sources sought**
  - **County-wide funding committee**
  - **Potential referendum**



# Puzzled?

(question?)

