



# Gaining Student Excitement in GIS with ArcGIS Explorer Online

The Lake County Experiment

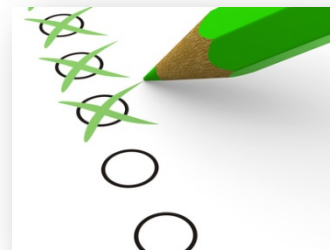


**Will Davis, GISP**  
**Lake County Schools**

# Where Do You Stand

- **Questionnaire**

- Who has participated in GIS Day?
- Why did you participate?
- Did your participation involve Students?
- How do you rate your interest in GIS?
  - A. It's an interesting career
  - B. I enjoy what I do
  - C. I'm passionate about what I do



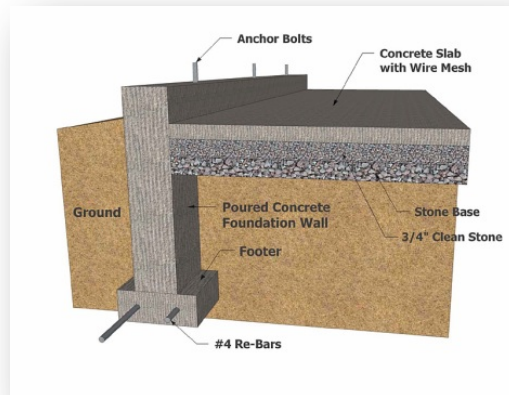
# Setting the Stage

- **Past experiences**
- **Capture their interest**
- **What's missing**
- **Where do you start**
- **Collaboration is key**
- **Icing on the cake**
- **Handing out the prize**
- **What we learned**
- **For the future**
- **Great compliments**



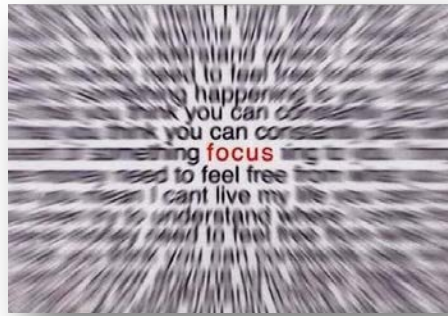
# Past Experiences

- **Freshman Foundations**
  - **9<sup>th</sup> grade students**
  - **Focused on career choices**
  - **The mechanics on how to land a job**
  - **Utilizes business professionals from the community to tell their story**



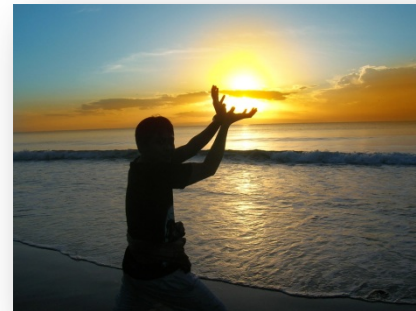
# Past Experiences

- **Presentation Focus**
  - **Who uses GIS** (professions/businesses)
  - **What is GIS** (parts & integration)
  - **When & How it is used** (Geospatial Revolution Project)
  - **Where it is used** (desktops, servers, tablets & smart phones)



# Capture Their Interest

- **Attention span**
  - Attention Deficit Disorder (ADD)
  - Sleep deprivation
- **Generate interest**
- **Force interaction**
- **Solicit questions**
- **Ask for feedback (teacher)**



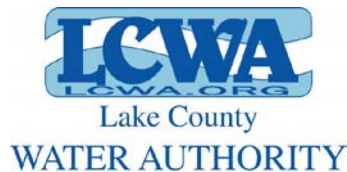
# What's Missing

- **Student engagement**
- **Hands-on interaction**
- **Dynamic map application**
  - **ArcGIS Explorer Online**



# Where Do You Start

- **Create a working group**
- **Determine your team size**
- **Understand your capabilities**
  - **Technical & presentation skills**
- **Establish your connections**
  - **Top down or bottom up**





# Where Do You Start

- **Identify site resources**
- **Define your target audience**
- **Generate a presentation outline**
- **Assign tasks to group members**
- **Practice a run-through (more is better)**
- **Don't be afraid to change on the fly**



# Collaboration is Key

- **Establish a dialogue with Teachers**
  - **Ask about curriculum needs**
  - **Discuss what & where will they be studying at the time of your presentation**
  - **Insist on the use of a computer lab**
  - **Demo ArcGIS Explorer Online**
  - **Help them set up an online global account**
  - **Provide assistance on establishing groups**
  - **Assure access to the Silverlight plugin**



# Icing on the Cake

- Create your materials
  - Handouts, tips sheets, web page & exercises

Discovering the world through GIS

[www.gisday.com](http://www.gisday.com)

### FIND THE FUN, CRACK THE CODE

As you learned yesterday Google Apps is a science that enables us to find answers to questions about the world around us. Geography also helps us to locate where things are and how to get there and there. Today we will use GIS to locate places in Central Florida we are all familiar with. These places:

**Your Mission**  
Find the locations of theme parks, events at theme parks, and site of theme parks in Central Florida by matching them with their class, address, and lat/long. Once you have located the locations you can crack the code for your day of fun here it's not awarded. How fast!

**Theme Parks** \*\*\*Create bookmarks to save locations\*\*\*

1. Park just opened 2011 has over 50 rides and a 150-acre formerly known as Cypress Gardens. 27 884411. 81 801818
2. 28 331811. 81 171216 (switch to Bing Maps Hybrid Basemap)
3. Location of the November 17-19 2011 North American Festival (50th East Silver Springs Boulevard Silver Springs, FL 32605A. 81 802424 (See Google)
4. 2011 Orlando Phony Lake Buena Vista, FL 32835A. 81 802424 (See Google)
5. World's Largest Water Park is over 107 acres search this address 1330 Ivanhoe Court Silver Springs, FL 32605A. 81 802424 (See Google)
6. 28 3658B. 81 523571

4) Magic Kingdom  
5) Legoland  
6) Silver Springs  
7) Epcot Center  
8) Universal Islands  
9) Silver Springs  
10) Animal Kingdom

**LEGOLAND** **SILVER SPRING**

### GIS TIME & TIPS

Find geographic information on the Internet. This is a great way to find information about a place or to find out more about a place. This is a great way to find information about a place or to find out more about a place.

**How to use Google Maps**

1. Open Google Maps in your browser.

2. Enter the address or location you want to find.

3. Click on the location you want to find.

4. Click on the location you want to find.

5. Click on the location you want to find.

6. Click on the location you want to find.

7. Click on the location you want to find.

8. Click on the location you want to find.

9. Click on the location you want to find.

10. Click on the location you want to find.

GIS TIME & TIPS

Find geographic information on the Internet. This is a great way to find information about a place or to find out more about a place. This is a great way to find information about a place or to find out more about a place.

**How to use Google Maps**

1. Open Google Maps in your browser.

2. Enter the address or location you want to find.

3. Click on the location you want to find.

4. Click on the location you want to find.

5. Click on the location you want to find.

6. Click on the location you want to find.

7. Click on the location you want to find.

8. Click on the location you want to find.

9. Click on the location you want to find.

10. Click on the location you want to find.

GIS TIME & TIPS

Find geographic information on the Internet. This is a great way to find information about a place or to find out more about a place. This is a great way to find information about a place or to find out more about a place.

**How to use Google Maps**

1. Open Google Maps in your browser.

2. Enter the address or location you want to find.

3. Click on the location you want to find.

4. Click on the location you want to find.

5. Click on the location you want to find.

6. Click on the location you want to find.

7. Click on the location you want to find.

8. Click on the location you want to find.

9. Click on the location you want to find.

10. Click on the location you want to find.

# GIS Day

LAKE COUNTY SCHOOLS

## GIS Day

How to GIS? [www.lcsd.net/gis](http://www.lcsd.net/gis)

GIS Day Information [www.lcsd.net/gis](http://www.lcsd.net/gis)

Student High Resources [www.lcsd.net/gis](http://www.lcsd.net/gis)

Are GIS Online [www.lcsd.net/gis](http://www.lcsd.net/gis)

GIS TIME & TIPS

Find geographic information on the Internet. This is a great way to find information about a place or to find out more about a place. This is a great way to find information about a place or to find out more about a place.

**How to use Google Maps**

1. Open Google Maps in your browser.

2. Enter the address or location you want to find.

3. Click on the location you want to find.

4. Click on the location you want to find.

5. Click on the location you want to find.

6. Click on the location you want to find.

7. Click on the location you want to find.

8. Click on the location you want to find.

9. Click on the location you want to find.

10. Click on the location you want to find.

GIS TIME & TIPS

Find geographic information on the Internet. This is a great way to find information about a place or to find out more about a place. This is a great way to find information about a place or to find out more about a place.

**How to use Google Maps**

1. Open Google Maps in your browser.

2. Enter the address or location you want to find.

3. Click on the location you want to find.

4. Click on the location you want to find.

5. Click on the location you want to find.

6. Click on the location you want to find.

7. Click on the location you want to find.

8. Click on the location you want to find.

9. Click on the location you want to find.

10. Click on the location you want to find.

LAKE COUNTY SCHOOLS

## GIS Technology and Map

Discovering the World Through GIS

LAKE COUNTY SCHOOLS has been utilizing Geographic Information Systems (GIS) technology in its classrooms. School District administrators and school board members with the ability to make more informed and effective decisions regarding their district's planning and operational programs.

GIS technology is a powerful tool that can be used in a variety of ways. It can be used to create maps, analyze data, and make decisions. It can be used to create maps, analyze data, and make decisions. It can be used to create maps, analyze data, and make decisions.

GIS TIME & TIPS

Find geographic information on the Internet. This is a great way to find information about a place or to find out more about a place. This is a great way to find information about a place or to find out more about a place.

**How to use Google Maps**

1. Open Google Maps in your browser.

2. Enter the address or location you want to find.

3. Click on the location you want to find.

4. Click on the location you want to find.

5. Click on the location you want to find.

6. Click on the location you want to find.

7. Click on the location you want to find.

8. Click on the location you want to find.

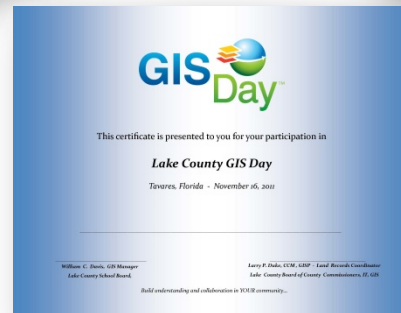
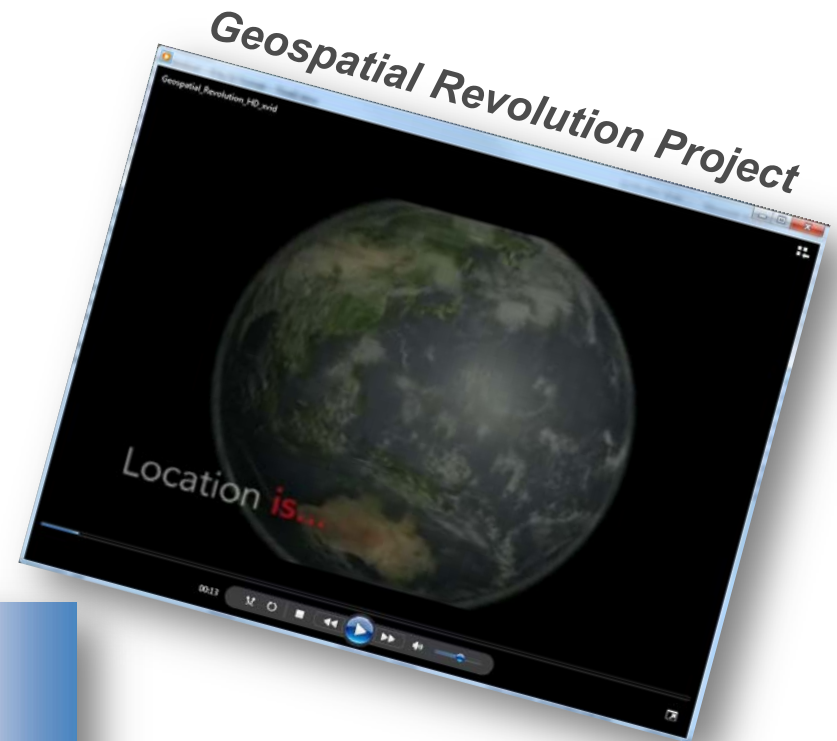
9. Click on the location you want to find.

10. Click on the location you want to find.



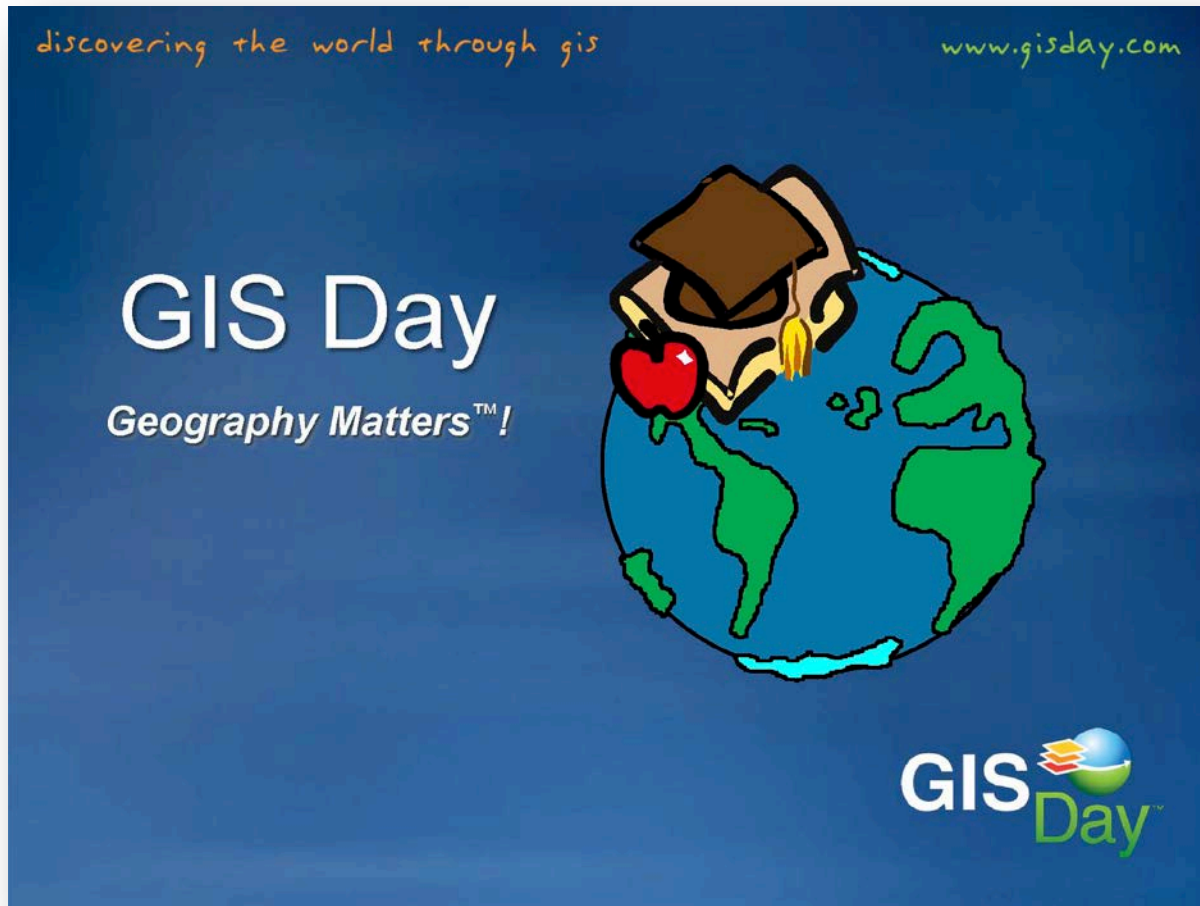
# Icing on the Cake

- Acquire your resources
  - Videos, prizes & certificates



# Icing on the Cake

- **Build your presentation**



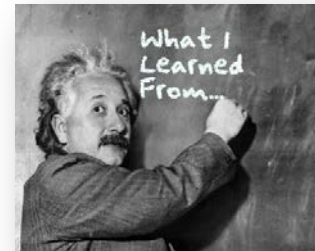
# Handing out the Prizes

- **Provide your message**



# What We Learned

- **Provide quick overview of GIS**
- **Work on setting up accounts**
- **Highlight functionality of ArcGIS Explorer Online**
- **Perform a formal class exercise**
- **Spend time searching local layers**
- **Provide time to experiment**
- **Get out of the way**



# What We Learned

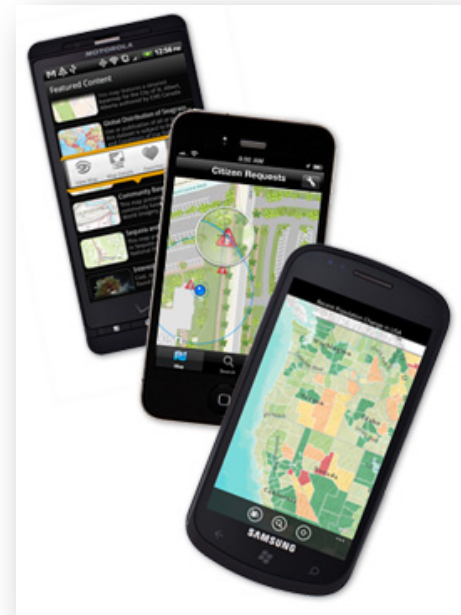
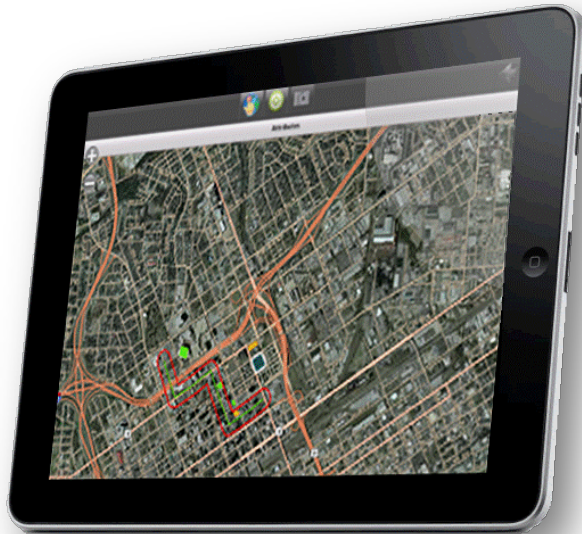
- **One day or two day class model**
- **High school vs. middle school**
- **Set the stage and turn them loose**
- **Keep spatial reference local**
- **Allow 10 minutes for free style**
- **Provide access to web resources**





# For the Future

- **Utilize Mobile Technologies**



# Great Compliments



*“I’ve rarely seen 100% engagement in any lesson activity as I have with ArcGIS Explorer Online. It was a great success!”*

**Diane Reid-Goolsby,  
Teacher  
6th Grade Geography**



# Web Resources

**GIS Day => <http://gisday.com/>**

**Teachers => <http://bit.ly/Jr28sU>**

**Students => <http://bit.ly/IgJndD>**

**Materials => <http://bit.ly/Jw4c0b>**

**Mark the Day: November 14, 2012**



# Take Away



## SPONGEBOB

No Wonder Our Kids Grow Up To Be Lazy

[motifake.com](http://motifake.com)



# Contact Information

**Will Davis – [DavisW@lake.k12.fl.us](mailto:DavisW@lake.k12.fl.us)**

