

WINDY HILL MIDDLE SCHOOL

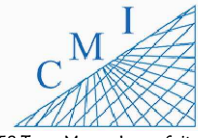


INDEX OF DRAWINGS

SHT. NO.	DESCRIPTION
SP-01	AERIAL
SP-02	SITE PLAN
B-01	BUILDING 01, 02 & 03 OVERALL
B-01.1	BUILDING 01
B-01.2	BUILDING 02
B-01.3	BUILDING 03
B-02	BUILDING 04
B-03	BUILDING 05
B-04	BUILDING 06
B-05	BUILDING 07
B-06	BUILDING 08

REV	DATE	DESCRIPTION
A	03/08/21	PRELIMINARY FISH PLAN
B		
0		
1		
2		
3		
4		
5		
6		

ARCHIS PROJECT NO.:	
DRAWN BY:	CHECKED BY:
SH	CB



158 Terra Mango Loop, Suite B,
Orlando, FL 32835
Main: (407) 293-4168

PREPARED BY:



350 E. Crown Point Road, Suite 1100
Winter Garden, FL 34787
Main: 888.324.2557
Direct: 407.439.1594

DATE

, PE

FL PROFESSIONAL ENGINEER LIC. #

Windy Hill Middle School

(FISH PLAN)

3575 Hancock Rd,
Clermont, FL 34711

SHEET DESCRIPTION

AERIAL VIEW

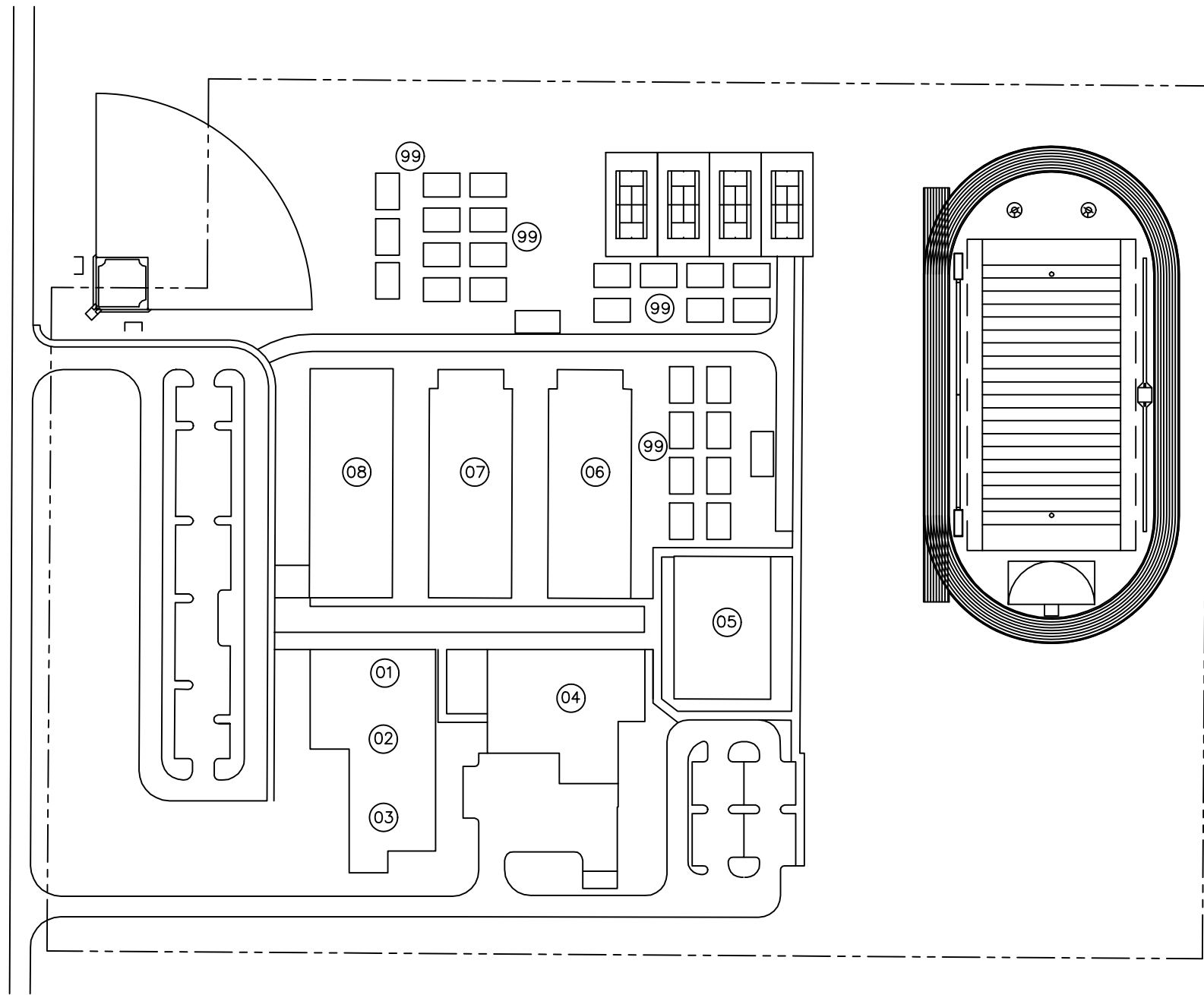
SHEET NUMBER

SP-01

1
SP-01 **AERIAL VIEW**
SCALE: N.T.S.

ARCHIS TECHNOLOGIES - \\server-1\H\Archis\21-037 Windy Hill Ms\From ISP\2021-03-08\896_Lake County_Fish Survey_Windy Hill MS.dwg March 8, 2021 09:44:09 ISP- M10

ARCHIS TECHNOLOGIES - \\server-1\H\Archis\21-037 Windy Hill Ms\From ISP\2021-03-08\896_Lake County_Fish Survey_Windy Hill MS.dwg March 8, 2021 09:44:17 ISP- M10



LEGEND

- 01- ADMINISTRATION
- 02- ADMINISTRATION
- 03- ADMINISTRATION
- 04- CAFETERIA
- 05- GYM
- 06- CLASSROOM
- 07- CLASSROOM
- 08- CLASSROOM
- 99- PORTABLES



1
OVERALL SITE PLAN
 SP-02 SCALE: 1/64"=1'-0"

REV	DATE	DESCRIPTION
A	03/08/21	PRELIMINARY FISH PLAN
B		
0		
1		
2		
3		
4		
5		
6		

ARCHIS PROJECT NO.:	
DRAWN BY: SH	CHECKED BY: CB



CMI
 158 Terra Mango Loop, Suite B,
 Orlando, FL 32835
 Main: (407) 293-4168

PREPARED BY:

 350 E. Crown Point Road, Suite 1100
 Winter Garden, FL 34787
 Main: 888.324.2557
 Direct: 407.439.1594

DATE
 , PE
 FL PROFESSIONAL ENGINEER LIC. #

Windy Hill Middle School
(FISH PLAN)
 3575 Hancock Rd,
 Clermont, FL 34711

SHEET DESCRIPTION
OVERALL SITE PLAN

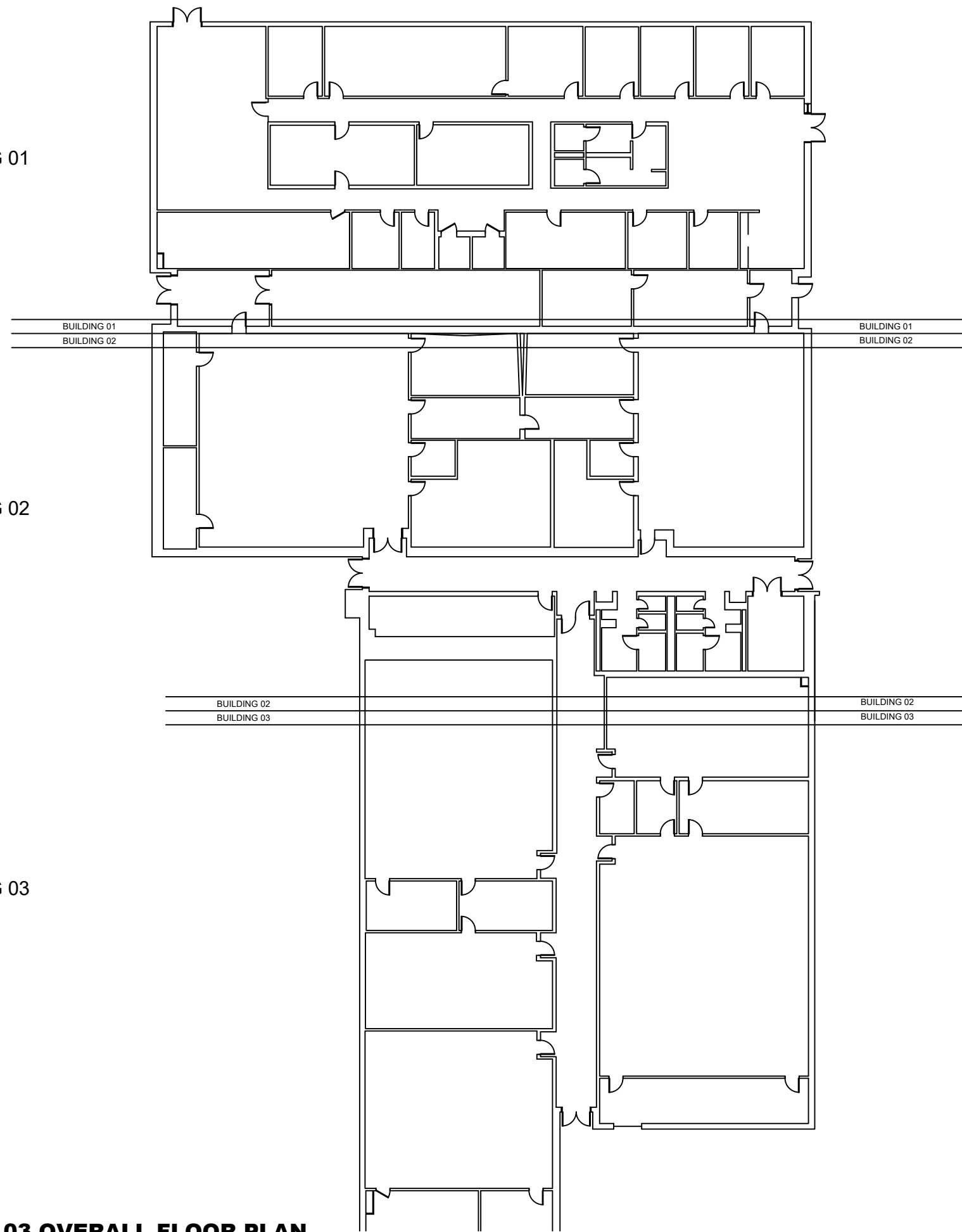
SHEET NUMBER
SP-02

ARCHIS TECHNOLOGIES - \\server-1\H\Archis\21-037 Windy Hill Ms\From ISP\2021-03-08\896_Lake County_Fish Survey_Windy Hill MS.dwg March 8, 2021 09:44:22 ISP- M10

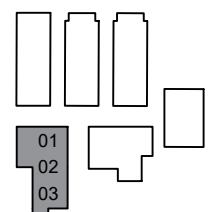
BUILDING 01

BUILDING 02

BUILDING 03



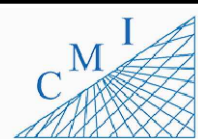
BUILDING 01, 02 & 03 OVERALL FLOOR PLAN
 SCALE: 3/32"=1'-0"



KEY PLAN

REV	DATE	DESCRIPTION
A	03/08/21	PRELIMINARY FISH PLAN
B		
0		
1		
2		
3		
4		
5		
6		

ARCHIS PROJECT NO.:	
DRAWN BY:	CHECKED BY:
SH	CB



158 Terra Mango Loop, Suite B,
 Orlando, FL 32835
 Main: (407) 293-4168

PREPARED BY:



350 E. Crown Point Road, Suite 1100
 Winter Garden, FL 34787
 Main: 888.324.2557
 Direct: 407.439.1594

DATE
 , PE
 FL PROFESSIONAL ENGINEER LIC. #

Windy Hill Middle School
(FISH PLAN)
 3575 Hancock Rd,
 Clermont, FL 34711

SHEET DESCRIPTION
BUILDING 01,02 & 03 OVERALL

SHEET NUMBER
B-01

ARCHIS TECHNOLOGIES - \\server-1\H\Archis\21-037 Windy Hill Ms\From ISP\2021-03-08\896_Lake County_Fish Survey_Windy Hill MS.dwg March 8, 2021 09:44:27 ISP- M10



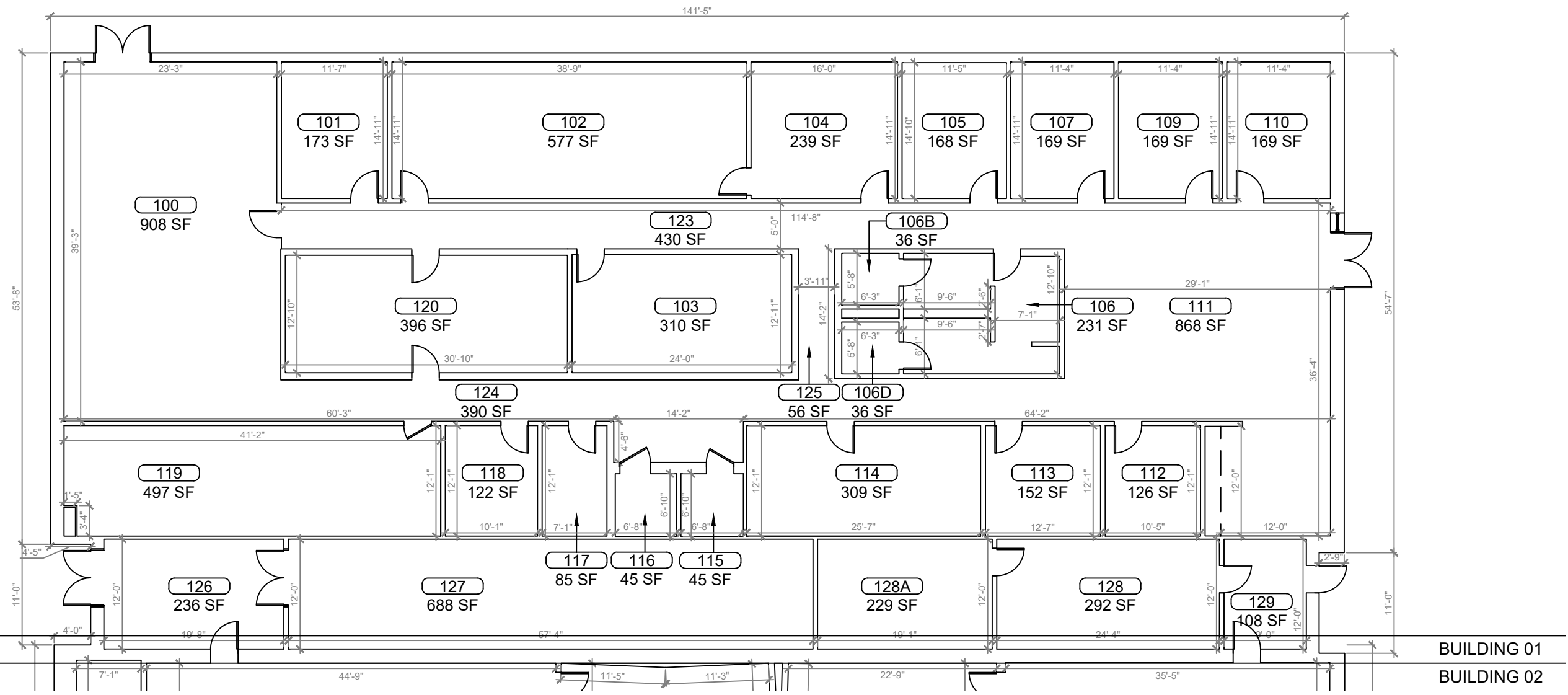
REV	DATE	DESCRIPTION
A	03/08/21	PRELIMINARY FISH PLAN
B		
0		
1		
2		
3		
4		
5		
6		

ARCHIS PROJECT NO.:	
DRAWN BY:	CHECKED BY:
SH	CB



158 Terra Mango Loop, Suite B,
Orlando, FL 32835
Main: (407) 293-4168

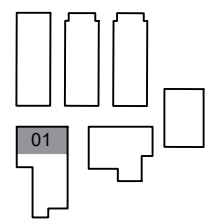
PREPARED BY:
ARCHIS
350 E. Crown Point Road, Suite 1100
Winter Garden, FL 34787
Main: 888.324.2557
Direct: 407.439.1594



BUILDING 01
BUILDING 02

BUILDING 01
BUILDING 02

1 BUILDING 01 FLOOR PLAN
SCALE: 3/16"=1'-0"



KEY PLAN

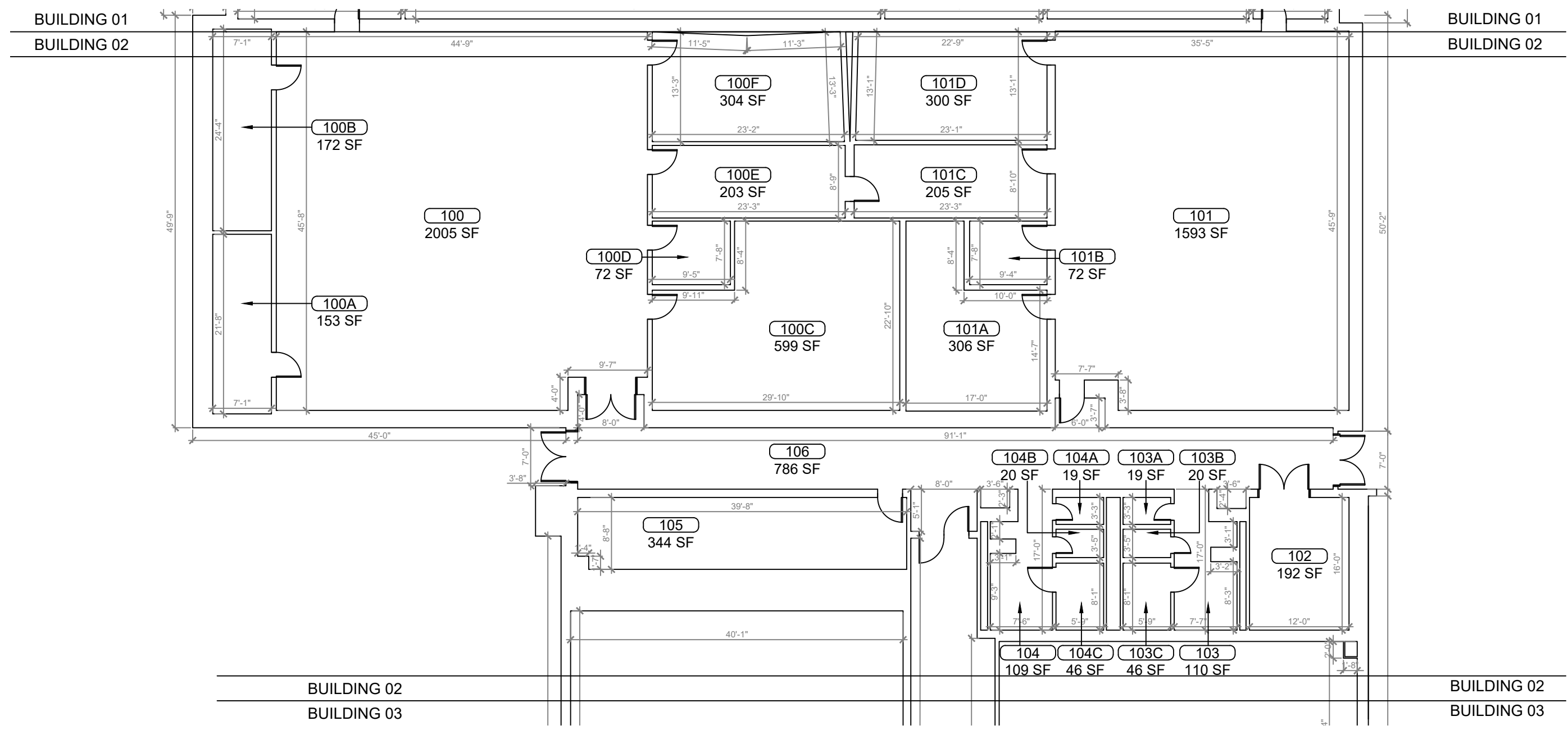
DATE
_____, PE
FL PROFESSIONAL ENGINEER LIC. #

Windy Hill Middle School
(FISH PLAN)
3575 Hancock Rd,
Clermont, FL 34711

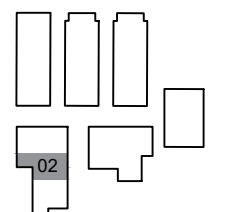
SHEET DESCRIPTION
BUILDING 01

SHEET NUMBER
B-01.1

ARCHIS TECHNOLOGIES - \\server-1\H\Archis\21-037 Windy Hill Ms\From ISP\2021-03-08\896_Lake County_Fish Survey_Windy Hill MS.dwg March 8, 2021 09:44:32 ISP- M10



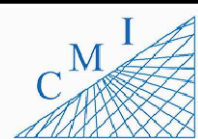
1 BUILDING 02 FLOOR PLAN
 B-01.2 SCALE: 3/16"=1'-0"



KEY PLAN

REV	DATE	DESCRIPTION
A	03/08/21	PRELIMINARY FISH PLAN
B		
0		
1		
2		
3		
4		
5		
6		

ARCHIS PROJECT NO.:	
DRAWN BY:	CHECKED BY:
SH	CB



158 Terra Mango Loop, Suite B,
 Orlando, FL 32835
 Main: (407) 293-4168

PREPARED BY:



350 E. Crown Point Road, Suite 1100
 Winter Garden, FL 34787
 Main: 888.324.2557
 Direct: 407.439.1594

DATE

, PE

FL PROFESSIONAL ENGINEER LIC. #

Windy Hill Middle School

(FISH PLAN)

3575 Hancock Rd,
 Clermont, FL 34711

SHEET DESCRIPTION

BUILDING 02

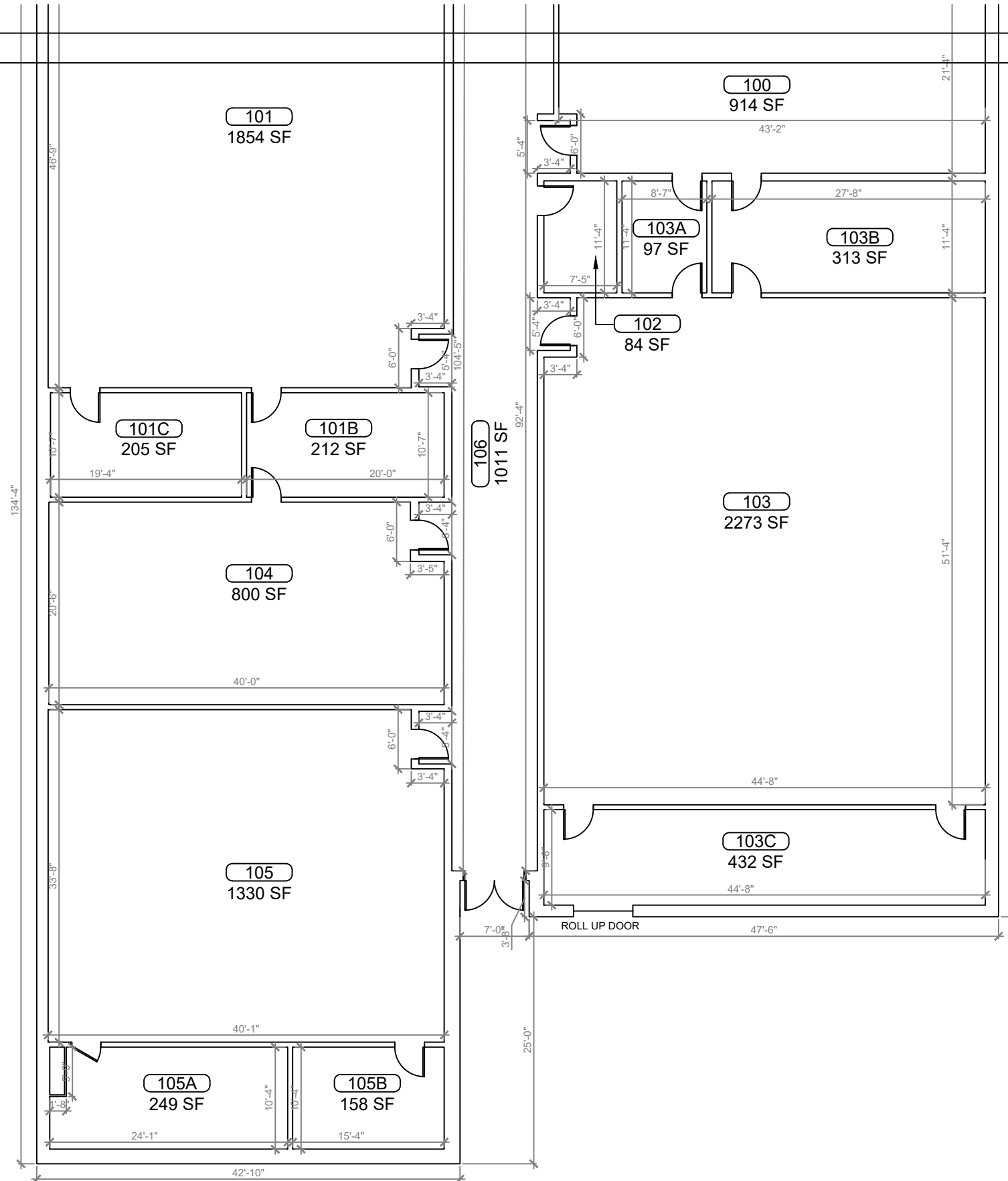
SHEET NUMBER

B-01.2

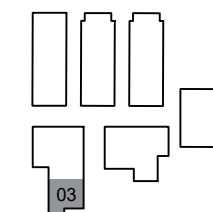
ARCHIS TECHNOLOGIES - \\server-1\H\Archis\21-037 Windy Hill Ms\From ISP\2021-03-08\896_Lake County_Fish Survey_Windy Hill MS.dwg March 8, 2021 09:44:37 ISP- M10

BUILDING 02
BUILDING 03

BUILDING 02
BUILDING 03



1 BUILDING 03 FLOOR PLAN
SCALE: 3/16"=1'-0"



KEY PLAN

REV	DATE	DESCRIPTION
A	03/08/21	PRELIMINARY FISH PLAN
B		
0		
1		
2		
3		
4		
5		
6		

ARCHIS PROJECT NO.:	
DRAWN BY:	CHECKED BY:
SH	CB



158 Terra Mango Loop, Suite B,
Orlando, FL 32835
Main: (407) 293-4168

PREPARED BY:



350 E. Crown Point Road, Suite 1100
Winter Garden, FL 34787
Main: 888.324.2557
Direct: 407.439.1594

DATE

, PE

FL PROFESSIONAL ENGINEER LIC. #

Windy Hill Middle School

(FISH PLAN)

3575 Hancock Rd,
Clermont, FL 34711

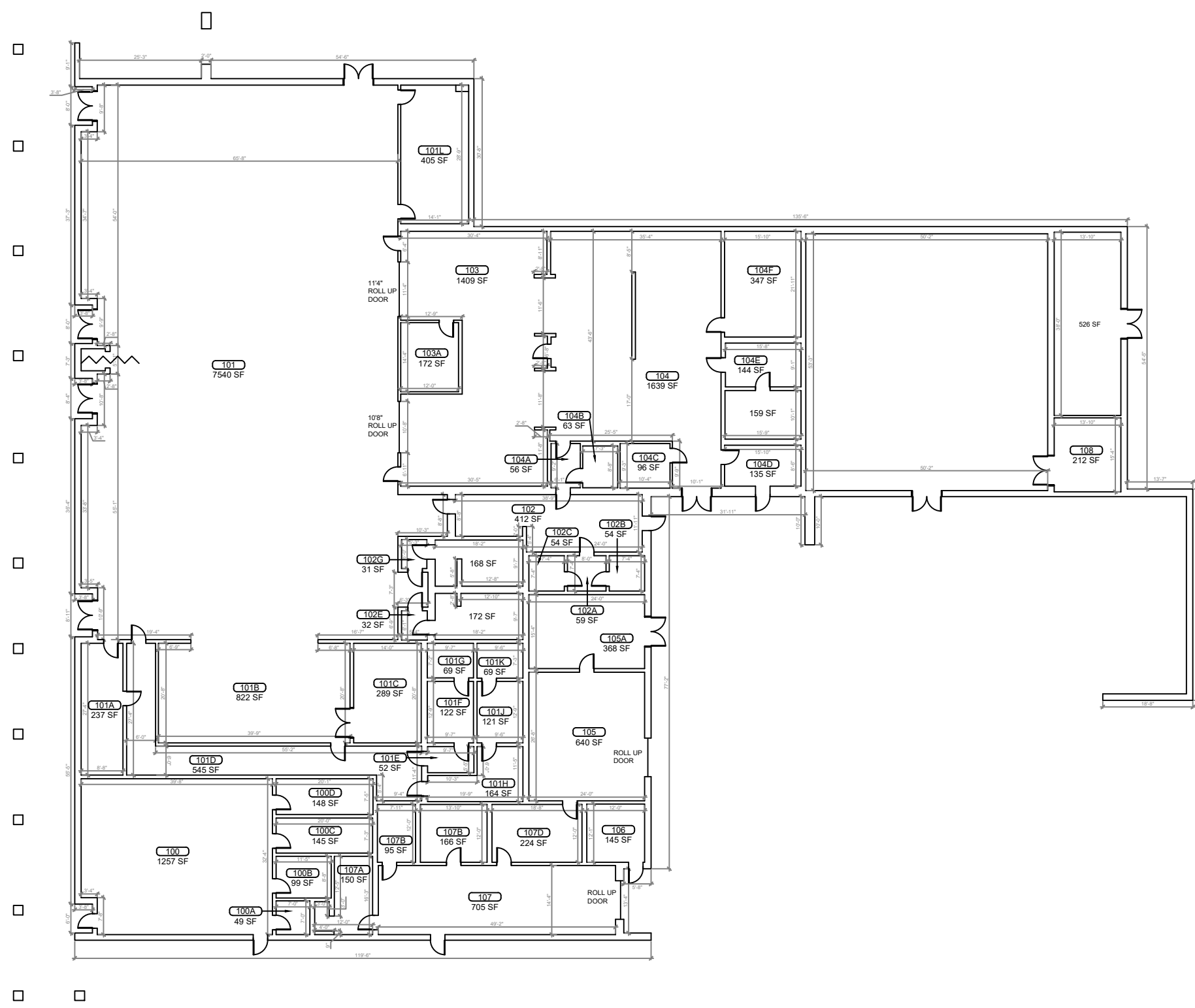
SHEET DESCRIPTION

BUILDING 03

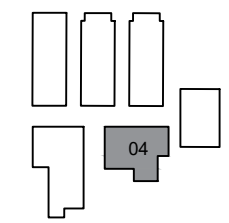
SHEET NUMBER

B-01.3

ARCHIS TECHNOLOGIES - \\server-1\H\Archis\21-037 Windy Hill Ms\From ISP\2021-03-08\896_Lake County_Fish Survey_Windy Hill MS.dwg March 8, 2021 09:44:42 ISP- M10



1 BUILDING 04 FLOOR PLAN
 B-02 SCALE: 3/32"=1'-0"



KEY PLAN

REV	DATE	DESCRIPTION
A	03/08/21	PRELIMINARY FISH PLAN
B		
0		
1		
2		
3		
4		
5		
6		

ARCHIS PROJECT NO.:

DRAWN BY:	CHECKED BY:
SH	CB



CMI
 158 Terra Mango Loop, Suite B,
 Orlando, FL 32835
 Main: (407) 293-4168

PREPARED BY:
ARCHIS
 350 E. Crown Point Road, Suite 1100
 Winter Garden, FL 34787
 Main: 888.324.2557
 Direct: 407.439.1594

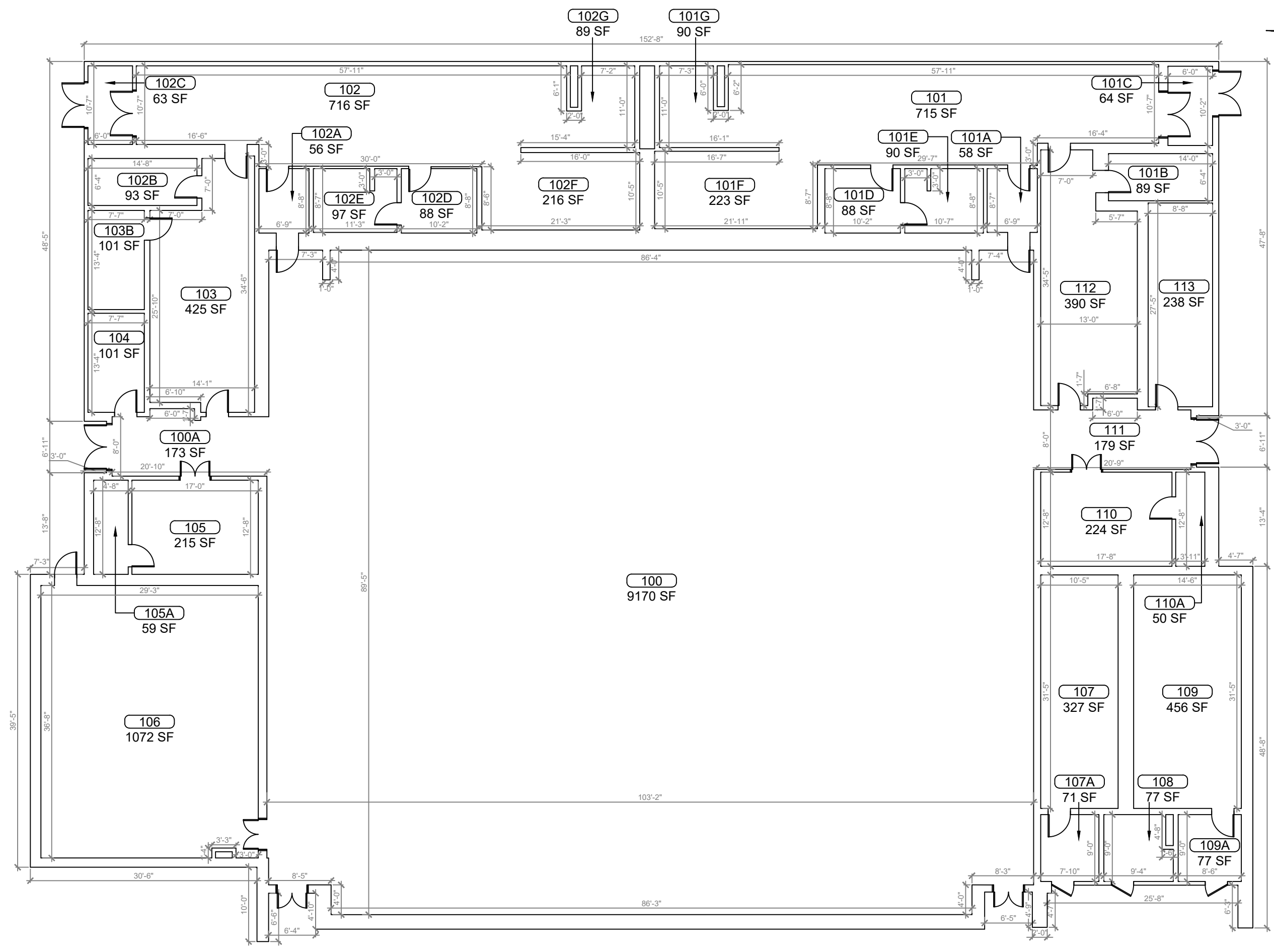
DATE _____
 , PE
 FL PROFESSIONAL ENGINEER LIC. # _____

Windy Hill Middle School
(FISH PLAN)
 3575 Hancock Rd,
 Clermont, FL 34711

SHEET DESCRIPTION
BUILDING 04

SHEET NUMBER
B-02

ARCHIS TECHNOLOGIES - \\server-1\H\Archis\21-037 Windy Hill Ms\From ISP\2021-03-08\896_Lake County_Fish Survey_Windy Hill MS.dwg March 8, 2021 09:44:47 ISP - M10



REV	DATE	DESCRIPTION
A	03/08/21	PRELIMINARY FISH PLAN
B		
0		
1		
2		
3		
4		
5		
6		

ARCHIS PROJECT NO.:

DRAWN BY:	CHECKED BY:
SH	CB



CMI
 158 Terra Mango Loop, Suite B,
 Orlando, FL 32835
 Main: (407) 293-4168

PREPARED BY:
ARCHIS
 350 E. Crown Point Road, Suite 1100
 Winter Garden, FL 34787
 Main: 888.324.2557
 Direct: 407.439.1594

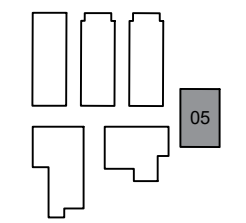
DATE _____
 , PE
 FL PROFESSIONAL ENGINEER LIC. # _____

Windy Hill Middle School
(FISH PLAN)
 3575 Hancock Rd,
 Clermont, FL 34711

SHEET DESCRIPTION
BUILDING 05

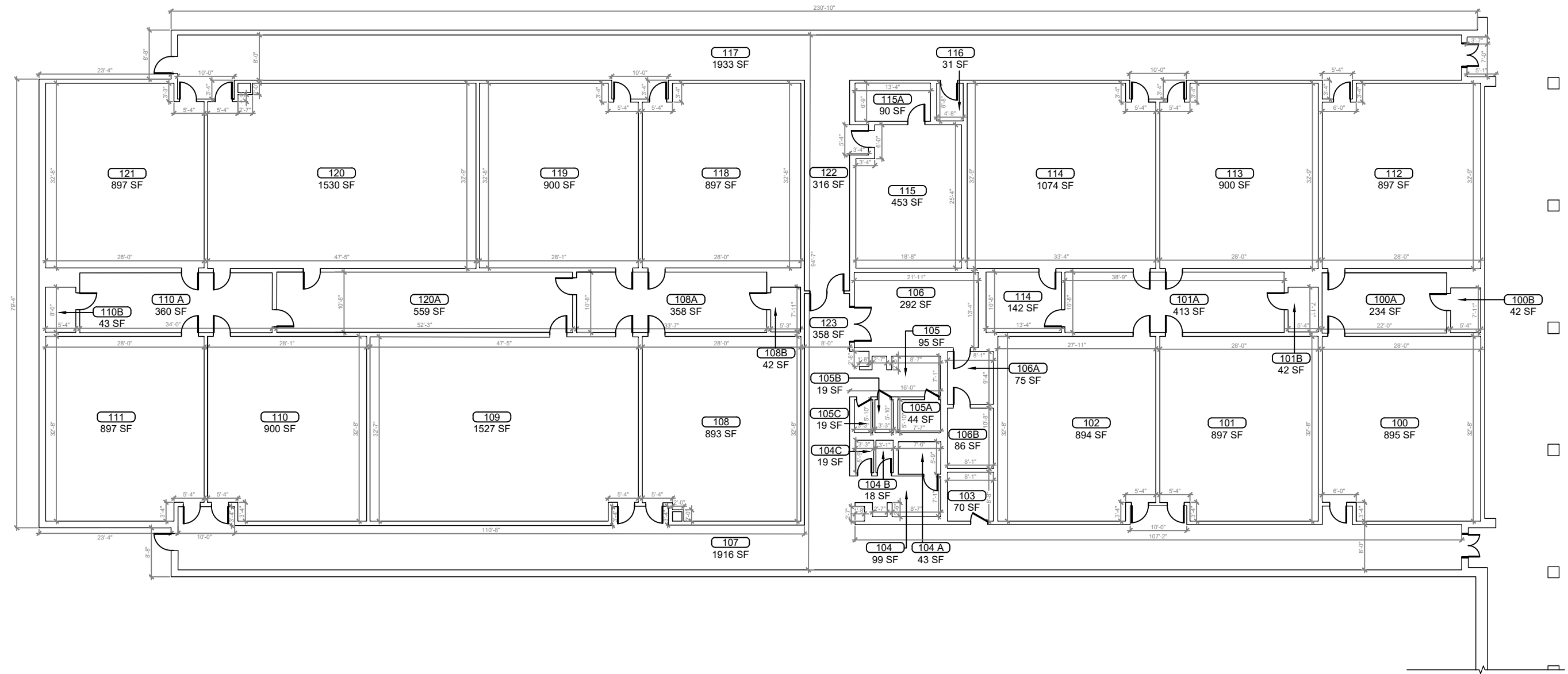
SHEET NUMBER
B-03

1 BUILDING 05 FLOOR PLAN
 SCALE: 3/16"=1'-0"

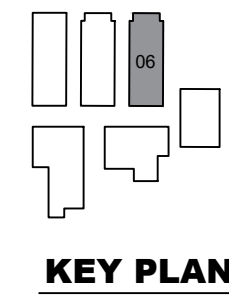


KEY PLAN

ARCHIS TECHNOLOGIES - \\server-1\H\Archis\21-037 Windy Hill Ms\From ISP\2021-03-08\896_Lake County_Fish Survey_Windy Hill MS.dwg March 8, 2021 09:44:52 ISP- M10



1
B-04 **BUILDING 06 FLOOR PLAN**
SCALE: 1/8"=1'-0"



REV	DATE	DESCRIPTION
A	03/08/21	PRELIMINARY FISH PLAN
B		
0		
1		
2		
3		
4		
5		
6		

ARCHIS PROJECT NO.:

DRAWN BY:	CHECKED BY:
SH	CB



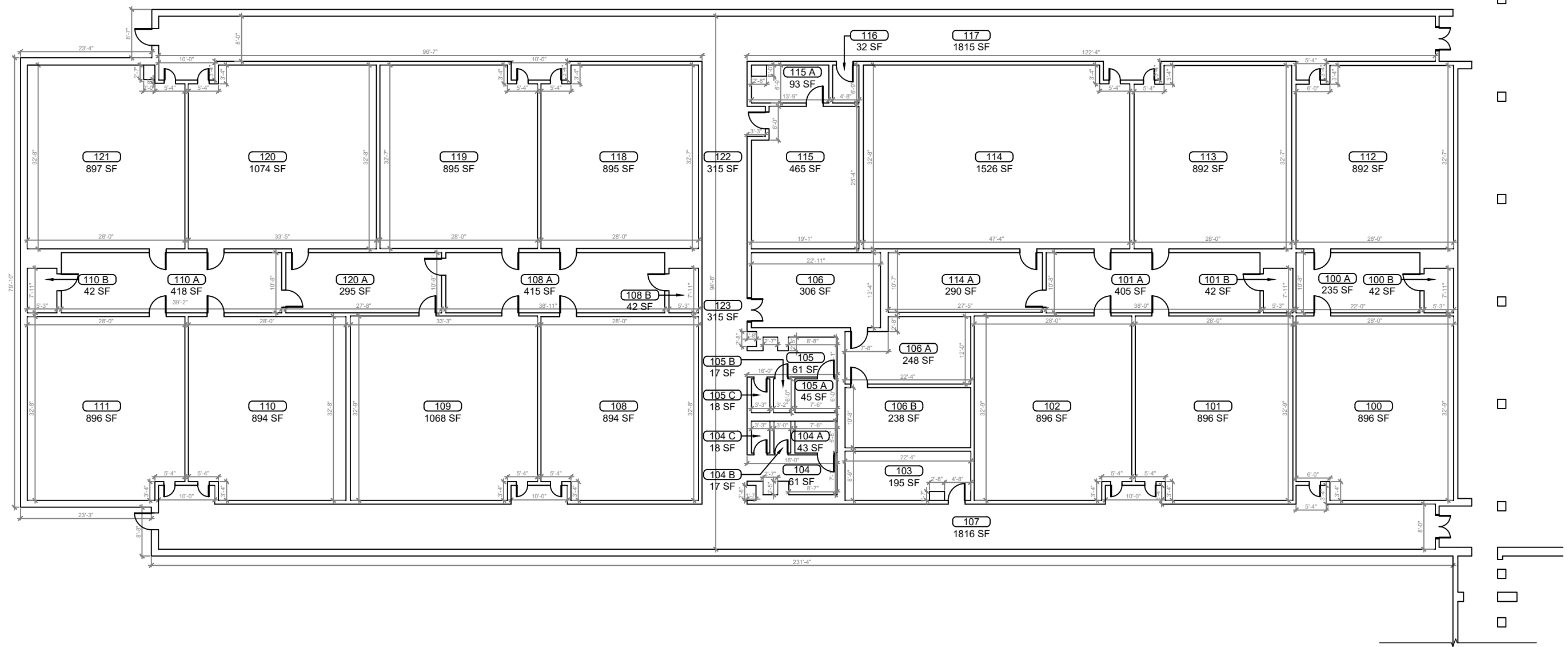
DATE _____
_____, PE
FL PROFESSIONAL ENGINEER LIC. # _____

Windy Hill Middle School
(FISH PLAN)
3575 Hancock Rd,
Clermont, FL 34711

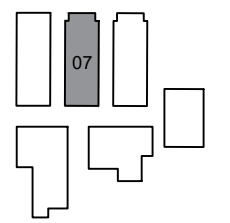
SHEET DESCRIPTION
BUILDING 06

SHEET NUMBER
B-04

ARCHIS TECHNOLOGIES - \\server-1\H\Archis\21-037 Windy Hill Ms\From ISP\2021-03-08\896_Lake County_Fish Survey_Windy Hill MS.dwg March 8, 2021 09:44:57 ISP- M10



1 BUILDING 07 FLOOR PLAN
SCALE: 1/8"=1'-0"



KEY PLAN

REV	DATE	DESCRIPTION
A	03/08/21	PRELIMINARY FISH PLAN
B		
0		
1		
2		
3		
4		
5		
6		

ARCHIS PROJECT NO.:	
DRAWN BY: SH	CHECKED BY: CB



158 Terra Mango Loop, Suite B,
Orlando, FL 32835
Main: (407) 293-4168

PREPARED BY:

350 E. Crown Point Road, Suite 1100
Winter Garden, FL 34787
Main: 888.324.2557
Direct: 407.439.1594

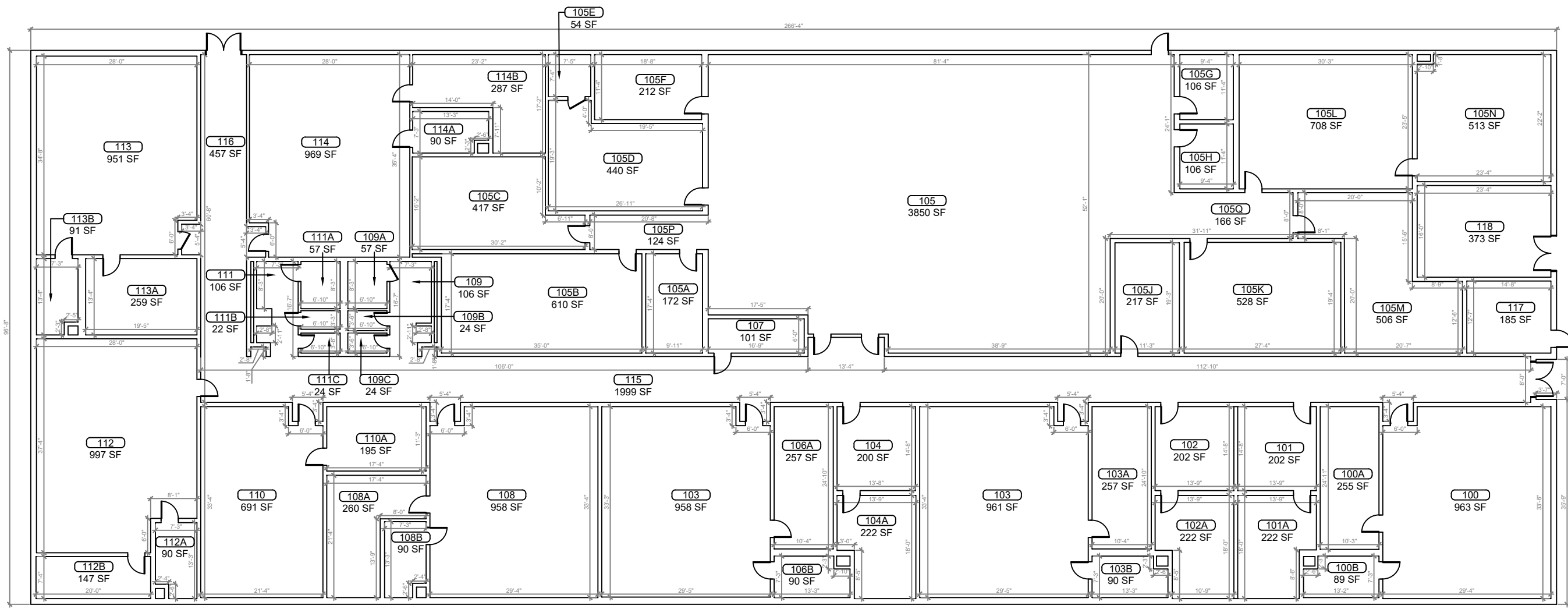
DATE
, PE
FL PROFESSIONAL ENGINEER LIC. #

Windy Hill Middle School
(FISH PLAN)
3575 Hancock Rd,
Clermont, FL 34711

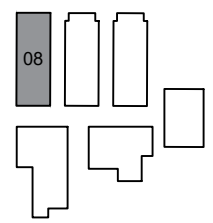
SHEET DESCRIPTION
BUILDING 07

SHEET NUMBER
B-05

ARCHIS TECHNOLOGIES - \\server-1\H\Archis\21-037 Windy Hill Ms\From ISP\2021-03-08\896_Lake County_Fish Survey_Windy Hill MS.dwg March 8, 2021 09:45:02 ISP- M10



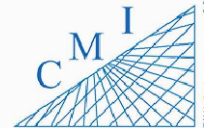
1 BUILDING 08 FLOOR PLAN
 B-06 SCALE: 1/8"=1'-0"



KEY PLAN

REV	DATE	DESCRIPTION
A	03/08/21	PRELIMINARY FISH PLAN
B		
0		
1		
2		
3		
4		
5		
6		

ARCHIS PROJECT NO.:	
DRAWN BY:	CHECKED BY:
SH	CB



158 Terra Mango Loop, Suite B,
 Orlando, FL 32835
 Main: (407) 293-4168

PREPARED BY:

350 E. Crown Point Road, Suite 1100
 Winter Garden, FL 34787
 Main: 888.324.2557
 Direct: 407.439.1594

DATE
 , PE
 FL PROFESSIONAL ENGINEER LIC. #

Windy Hill Middle School
(FISH PLAN)
 3575 Hancock Rd,
 Clermont, FL 34711

SHEET DESCRIPTION
BUILDING 08

SHEET NUMBER
B-06