

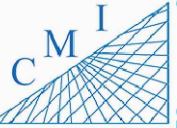
# UMATILLA MIDDLE SCHOOL



INDEX OF DRAWINGS	
SHT. NO.	DESCRIPTION
SP-01	AERIAL
SP-02	SITE PLAN
B-01A	BUILDING 01A
B-01B	BUILDING 01B
B-02	BUILDING 02 & 03
B-03	BUILDING 04, 05 & 99
B-04	BUILDING 07

REV	DATE	DESCRIPTION
A	02/23/21	PRELIMINARY FISH PLAN
B		
0		
1		
2		
3		
4		
5		
6		

ARCHIS PROJECT NO.:	
DRAWN BY:	CHECKED BY:
YP	CB



158 Terra Mango Loop, Suite B,  
Orlando, FL 32835  
Main: (407) 293-4168



350 E. Crown Point Road, Suite 1100  
Winter Garden, FL 34787  
Main: 888.324.2557  
Direct: 407.439.1594

DATE  
, PE  
FL PROFESSIONAL ENGINEER LIC. #

**Umatilla Middle School  
(FISH PLAN)**  
305 E Lake St,  
Umatilla, FL

SHEET DESCRIPTION  
**AERIAL VIEW**

SHEET NUMBER  
**SP-01**

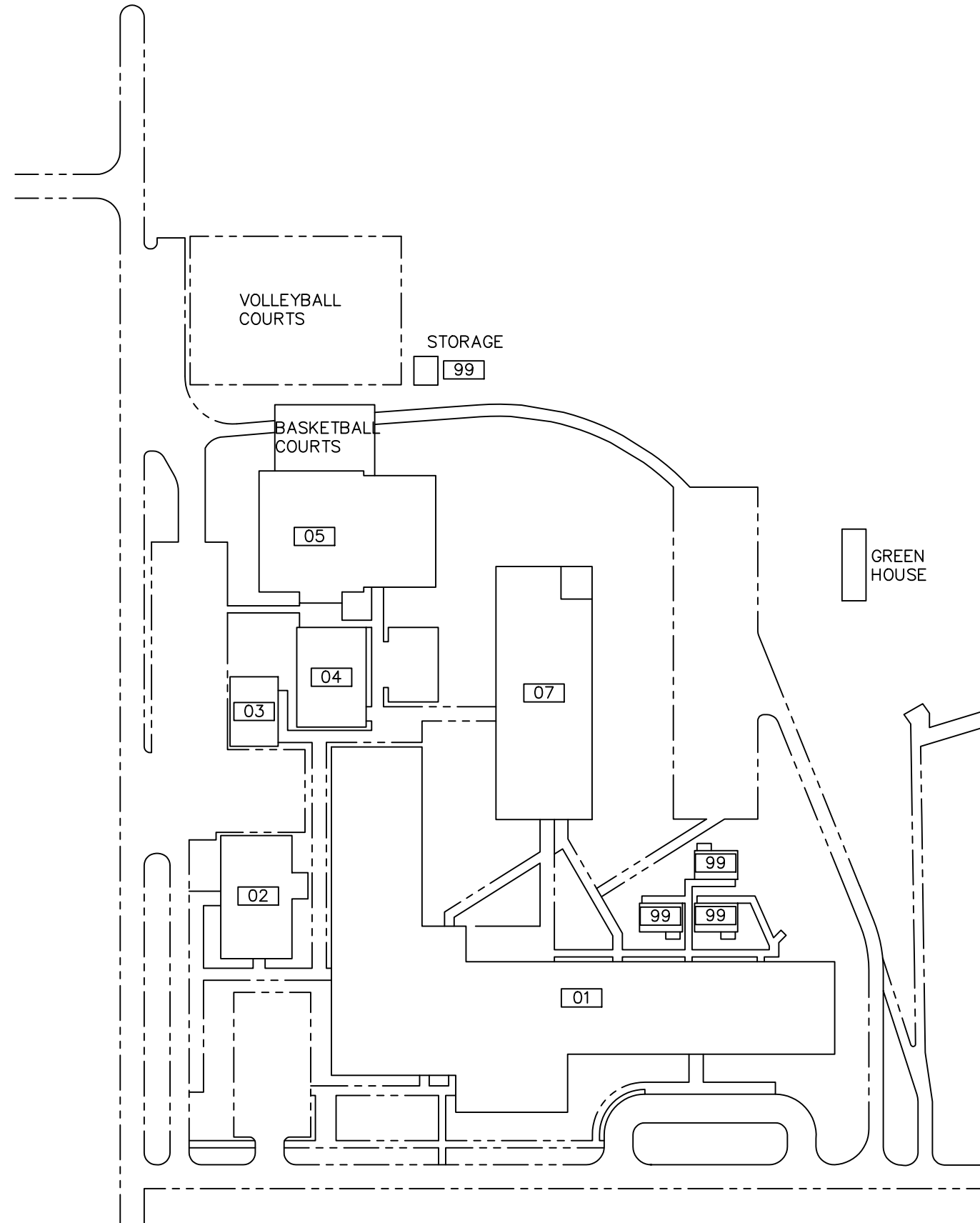
**1**  
SP-01 **AERIAL VIEW**  
SCALE: N.T.S.

server-1\H\Archis\21-026 Umatilla MS\From ISP\2021-02-26\896\_Lake County Fish Survey\_Umatilla MS.dwg February 26, 2021 18:58:29 PC20

ARCHIS TECHNOLOGIES - \\server-1\H\Archis\21-026 Umatilla MS\From ISP\2021-02-26\896\_Lake County Fish Survey\_Umatilla MS.dwg February 26, 2021 18:58:35 PC20

# LEGEND

- 01- ADMIN\CLASSROOM
- 02- CAFETERIA
- 03- STORAGE
- 04- MUSIC
- 05- GYM
- 07- CLASSROOM
- 99- PORTABLES
- 99- STORAGE



**1** **OVERALL SITE PLAN**  
 SP-02 SCALE: N.T.S



REV	DATE	DESCRIPTION
A	02/23/21	PRELIMINARY FISH PLAN
B		
0		
1		
2		
3		
4		
5		
6		

ARCHIS PROJECT NO.:  
 DRAWN BY: YP  
 CHECKED BY: CB



**CMI**  
 158 Terra Mango Loop, Suite B,  
 Orlando, FL 32835  
 Main: (407) 293-4168

PREPARED BY:  
**ARCHIS**  
 350 E. Crown Point Road, Suite 1100  
 Winter Garden, FL 34787  
 Main: 888.324.2557  
 Direct: 407.439.1594

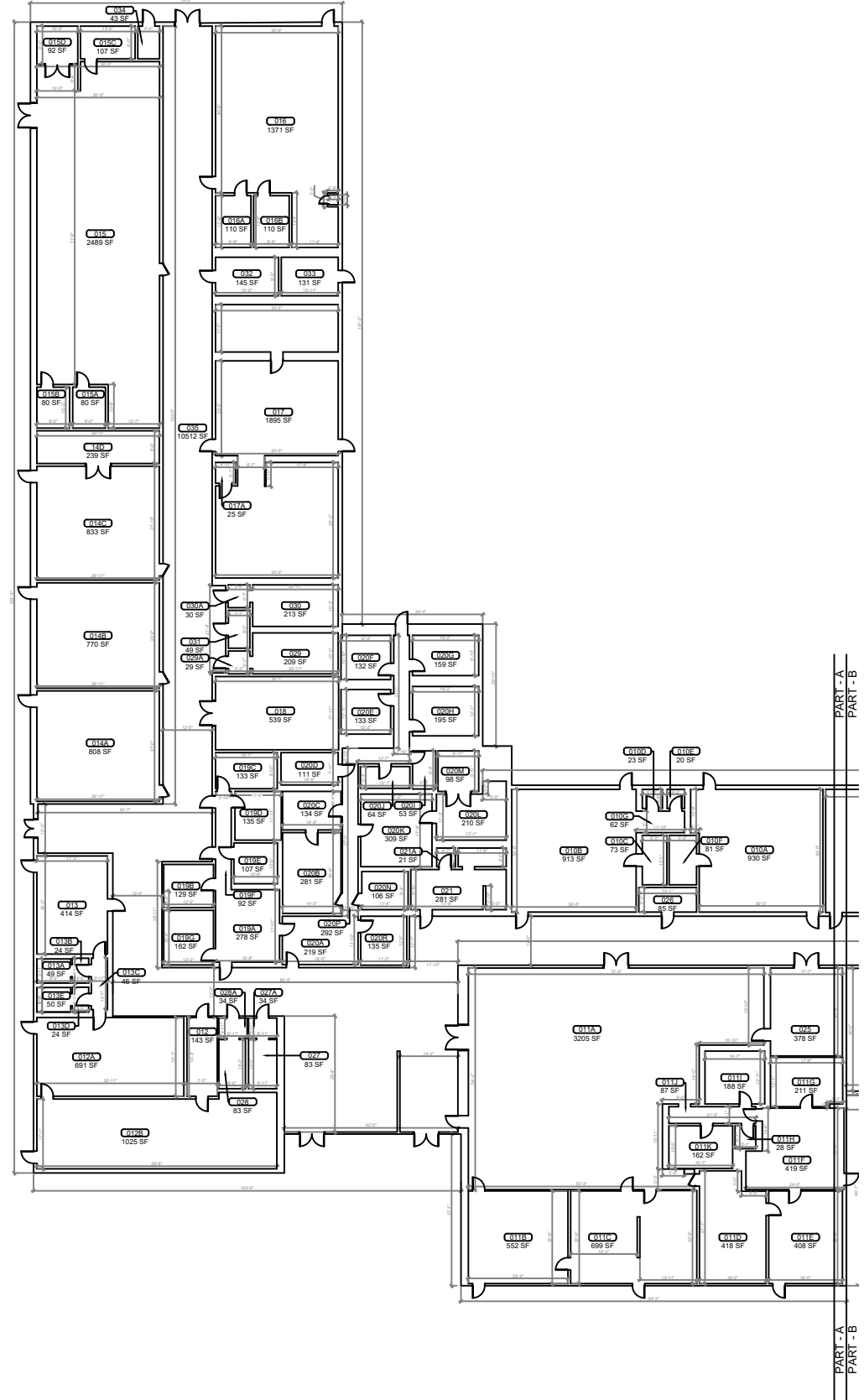
DATE  
 , PE  
 FL PROFESSIONAL ENGINEER LIC. #

**Umatilla Middle School**  
**(FISH PLAN)**  
 305 E Lake St,  
 Umatilla, FL

SHEET DESCRIPTION  
**OVERALL SITE PLAN**

SHEET NUMBER  
**SP-02**

server-1\H\Archis\21-026 Umatilla MS\From ISP\2021-02-26\896\_Lake County Fish Survey\_Umatilla MS.dwg February 26, 2021 18:58:37 PC20




REV	DATE	DESCRIPTION
A	02/23/21	PRELIMINARY FISH PLAN
B		
0		
1		
2		
3		
4		
5		
6		

ARCHIS PROJECT NO.:  
 DRAWN BY: YP  
 CHECKED BY: CB



**C M I**  
 158 Terra Mango Loop, Suite B,  
 Orlando, FL 32835  
 Main: (407) 293-4168

PREPARED BY:  
  
 350 E. Crown Point Road, Suite 1100  
 Winter Garden, FL 34787  
 Main: 888.324.2557  
 Direct: 407.439.1594

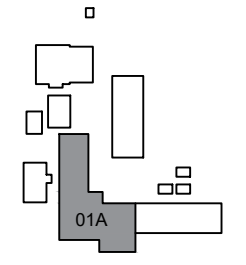
DATE  
 , PE  
 FL PROFESSIONAL ENGINEER LIC. #

**Umatilla Middle School**  
**(FISH PLAN)**  
 305 E Lake St,  
 Umatilla, FL

SHEET DESCRIPTION  
**BUILDING 01**

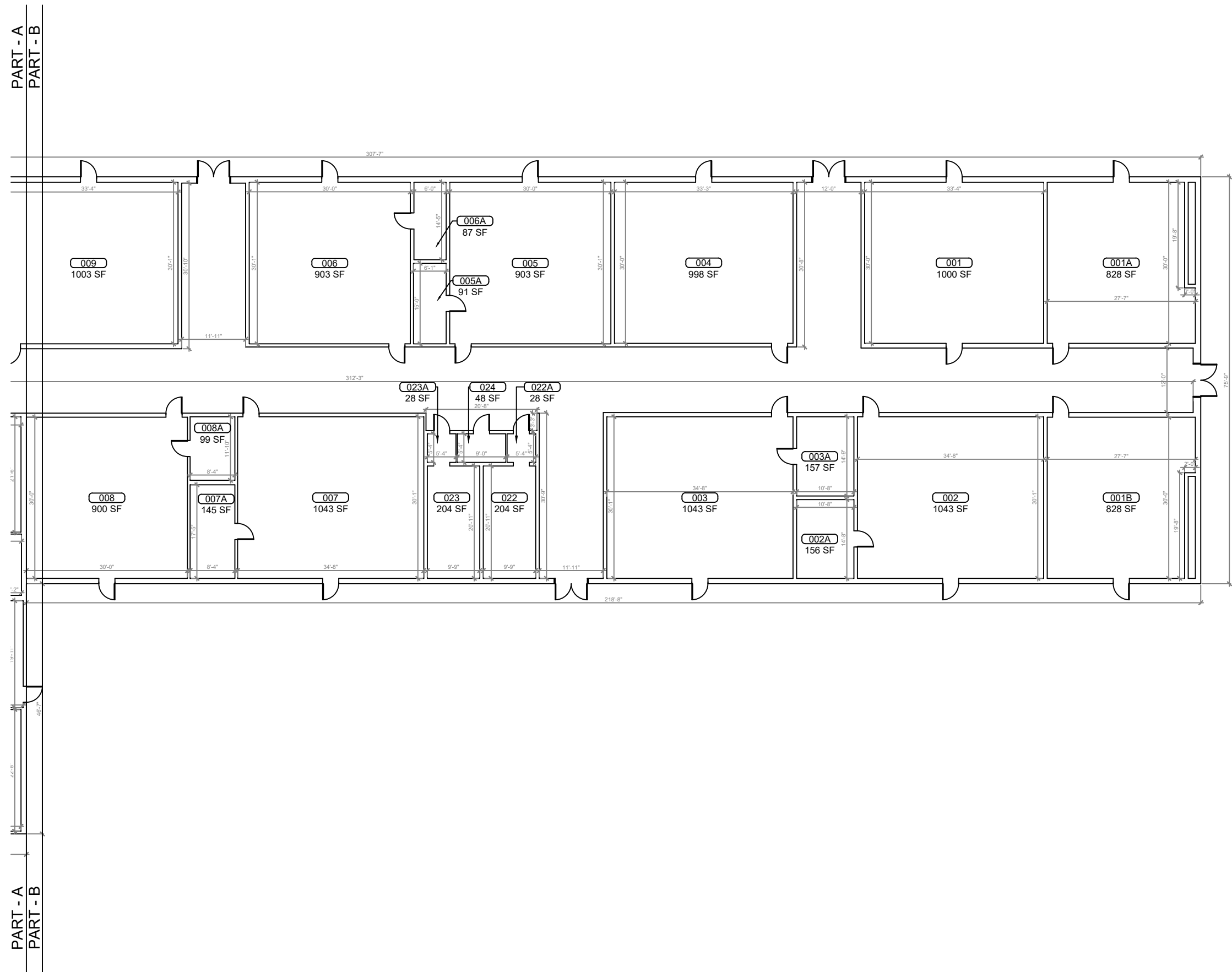
SHEET NUMBER  
**B-01A**

**1**  
**B-01A BUILDING 01A FLOOR PLAN**  
 SCALE: 1/16"=1'-0"



**KEY PLAN**

ARCHIS TECHNOLOGIES - \\server-1\H\Archis\21-026 Umatilla MS\21-026 Umatilla MS\From ISP\2021-02-26\896\_Lake County Fish Survey\_Umatilla MS.dwg February 26, 2021 18:58:42 PC20



REV	DATE	DESCRIPTION
A	02/23/21	PRELIMINARY FISH PLAN
B		
0		
1		
2		
3		
4		
5		
6		

ARCHIS PROJECT NO.:  
 DRAWN BY: YP  
 CHECKED BY: CB



**CMI**  
 158 Terra Mango Loop, Suite B,  
 Orlando, FL 32835  
 Main: (407) 293-4168

PREPARED BY:  
**ARCHIS**  
 350 E. Crown Point Road, Suite 1100  
 Winter Garden, FL 34787  
 Main: 888.324.2557  
 Direct: 407.439.1594

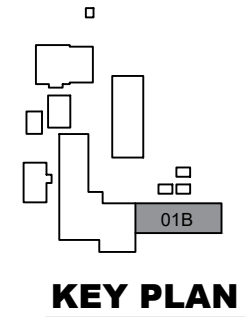
DATE  
 , PE  
 FL PROFESSIONAL ENGINEER LIC. #

**Umatilla Middle School (FISH PLAN)**  
 305 E Lake St,  
 Umatilla, FL

SHEET DESCRIPTION  
**BUILDING 01**

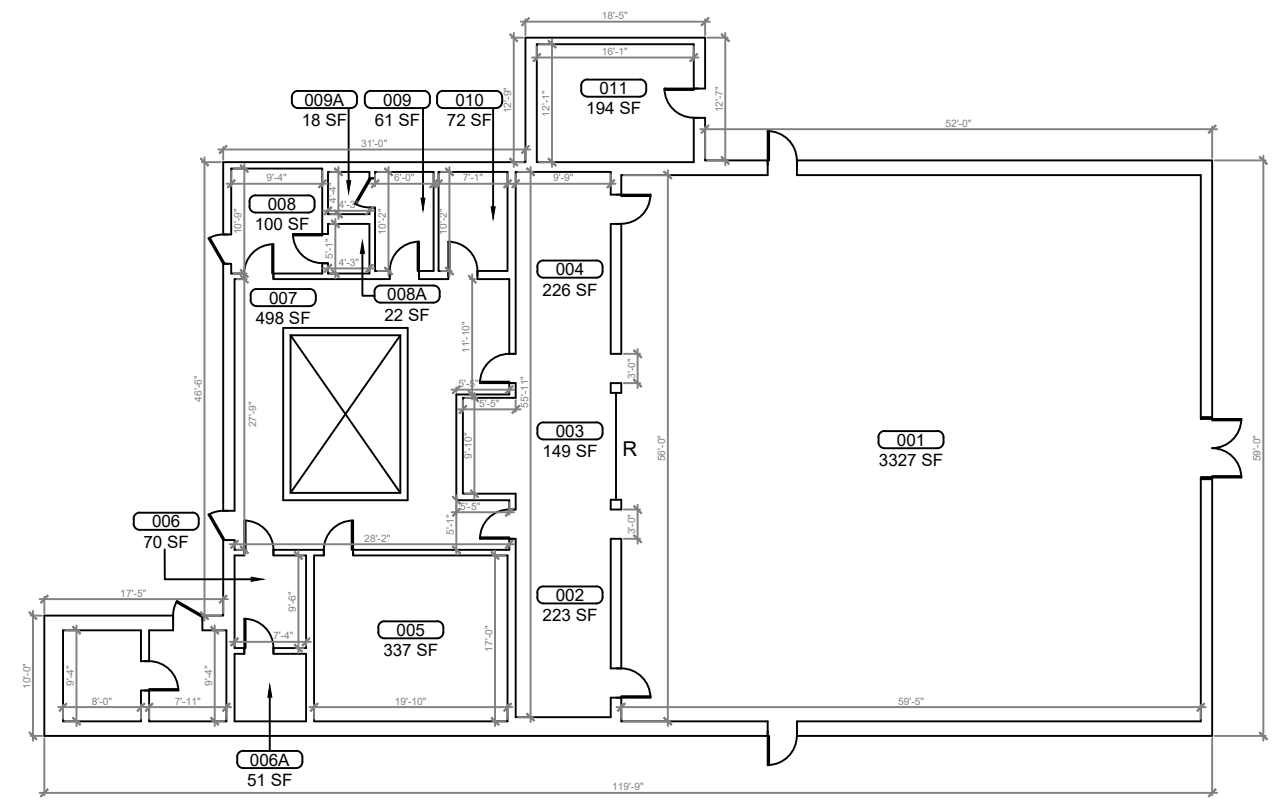
SHEET NUMBER  
**B-01B**

**1**  
**B-01B BUILDING 01B FLOOR PLAN**  
 SCALE: 1/8"=1'-0"

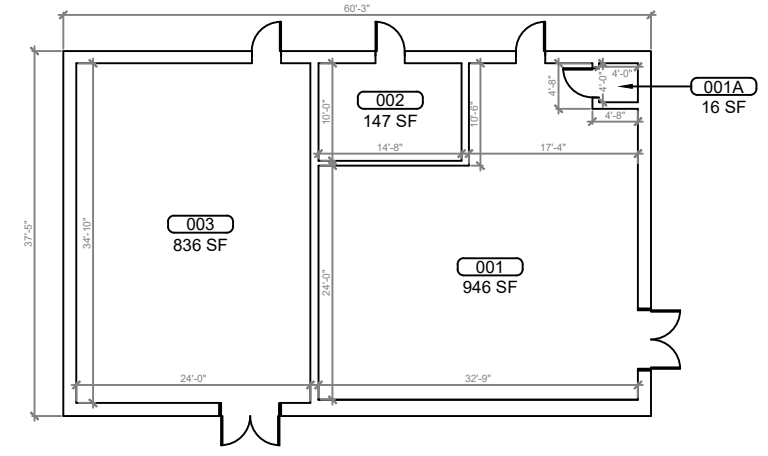


**KEY PLAN**

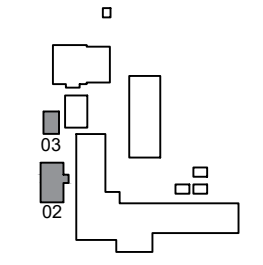
ARCHIS TECHNOLOGIES - \\server-1\H\Archis\21-026 Umatilla MS\From ISP\2021-02-26\896\_Lake County Fish Survey\_Umatilla MS.dwg February 26, 2021 18:58:47 PC20



**1 BUILDING 02 FLOOR PLAN**  
SCALE: 1/8"=1'-0"



**2 BUILDING 03 FLOOR PLAN**  
SCALE: 1/8"=1'-0"



**KEY PLAN**

REV	DATE	DESCRIPTION
A	02/23/21	PRELIMINARY FISH PLAN
B		
0		
1		
2		
3		
4		
5		
6		

ARCHIS PROJECT NO.:  
DRAWN BY: YP  
CHECKED BY: CB



**CM I**  
158 Terra Mango Loop, Suite B,  
Orlando, FL 32835  
Main: (407) 293-4168

PREPARED BY:  
**ARCHIS**  
350 E. Crown Point Road, Suite 1100  
Winter Garden, FL 34787  
Main: 888.324.2557  
Direct: 407.439.1594

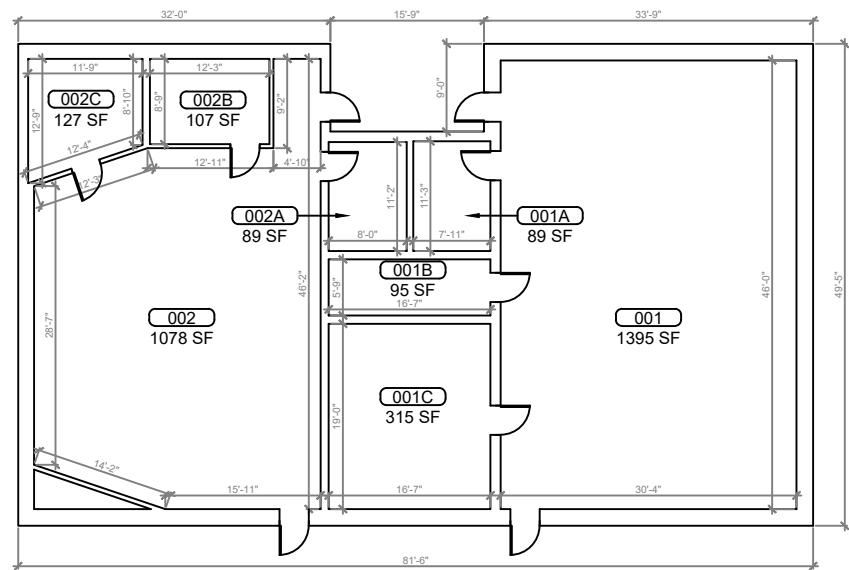
DATE  
, PE  
FL PROFESSIONAL ENGINEER LIC. #

**Umatilla Middle School (FISH PLAN)**  
305 E Lake St,  
Umatilla, FL

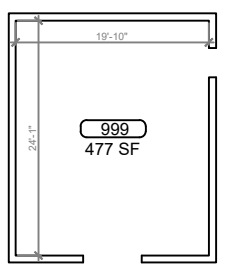
SHEET DESCRIPTION  
**BUILDING 02 & 03**

SHEET NUMBER  
**B-02**

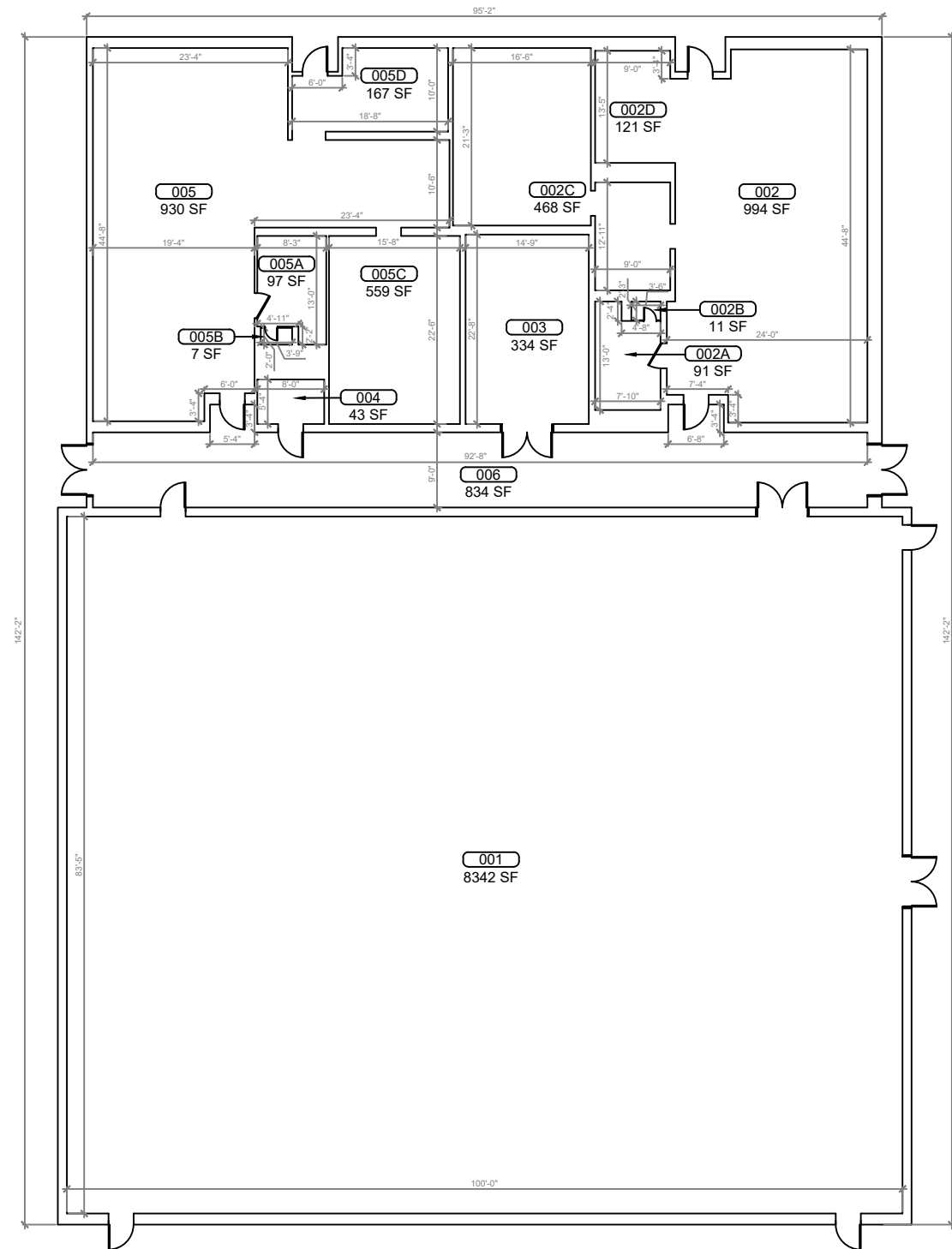
server-1\H\Archis\21-026 Umatilla MS\From ISP\2021-02-26\896\_Lake County Fish Survey\_Umatilla MS.dwg February 26, 2021 18:58:52 PC20



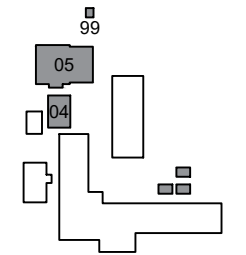
**1 BUILDING 04 FLOOR PLAN**  
SCALE: 1/8"=1'-0"



**3 BUILDING 99 FLOOR PLAN**  
SCALE: 1/8"=1'-0"



**2 BUILDING 05 FLOOR PLAN**  
SCALE: 1/8"=1'-0"



**KEY PLAN**

REV	DATE	DESCRIPTION
A	02/23/21	PRELIMINARY FISH PLAN
B		
0		
1		
2		
3		
4		
5		
6		

ARCHIS PROJECT NO.:	
DRAWN BY:	CHECKED BY:
YP	CB



**CMI**  
158 Terra Mango Loop, Suite B,  
Orlando, FL 32835  
Main: (407) 293-4168

PREPARED BY:  
**ARCHIS**  
350 E. Crown Point Road, Suite 1100  
Winter Garden, FL 34787  
Main: 888.324.2557  
Direct: 407.439.1594

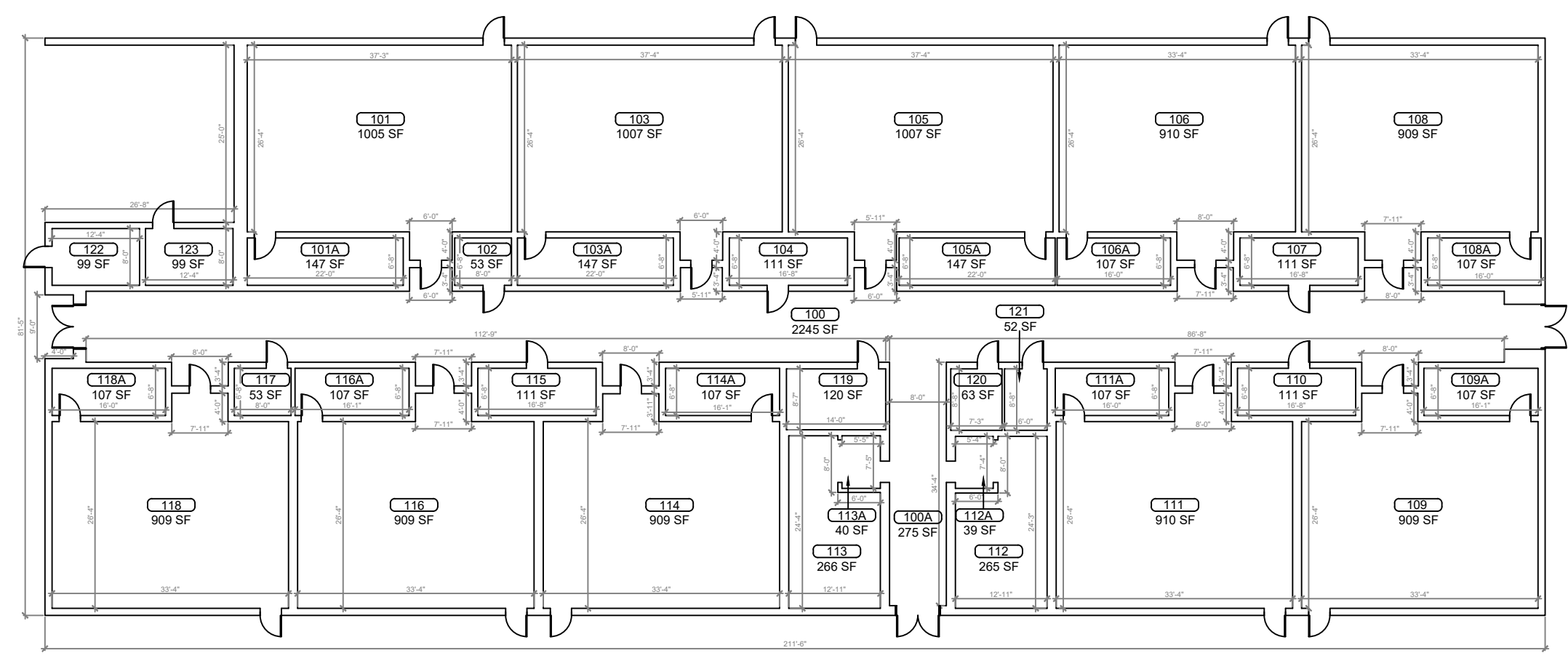
**DATE**  
**, PE**  
FL PROFESSIONAL ENGINEER LIC. #

**Umatilla Middle School (FISH PLAN)**  
305 E Lake St,  
Umatilla, FL

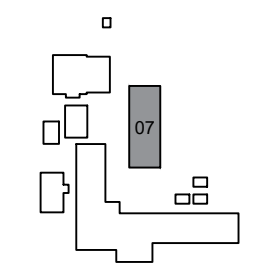
SHEET DESCRIPTION  
**BUILDING 04, 05 & 99**

SHEET NUMBER  
**B-03**

ARCHIS TECHNOLOGIES - \\server-1\H\Archis\21-026 Umatilla MS\From ISP\2021-02-26\896\_Lake County Fish Survey\_Umatilla MS.dwg February 26, 2021 18:58:57 PC20



**1 BUILDING 07 FLOOR PLAN**  
 B-04 SCALE: 1/8"=1'-0"



**KEY PLAN**

REV	DATE	DESCRIPTION
A	02/23/21	PRELIMINARY FISH PLAN
B		
0		
1		
2		
3		
4		
5		
6		

ARCHIS PROJECT NO.:  
 DRAWN BY: YP  
 CHECKED BY: CB



**C M I**  
 158 Terra Mango Loop, Suite B,  
 Orlando, FL 32835  
 Main: (407) 293-4168

PREPARED BY:  
**ARCHIS**  
 350 E. Crown Point Road, Suite 1100  
 Winter Garden, FL 34787  
 Main: 888.324.2557  
 Direct: 407.439.1594

**DATE**  
 , PE  
 FL PROFESSIONAL ENGINEER LIC. #

**Umatilla Middle School (FISH PLAN)**  
 305 E Lake St,  
 Umatilla, FL

SHEET DESCRIPTION  
**BUILDING 07**

SHEET NUMBER  
**B-04**