

TREADWAY ELEMENTARY SCHOOL



INDEX OF DRAWINGS	
SHT. NO.	DESCRIPTION
SP-01	AERIAL
SP-02	SITE PLAN
B-01	BUILDING 01
B-02	BUILDING 02
B-03	BUILDING 03, 06, 14, SB 01, SB 02
B-04	BUILDING 07 & 08
B-05	BUILDING 10
B-06	BUILDING 11
B-07	BUILDING 12
B-08	BUILDING 13

REV	DATE	DESCRIPTION
A	02/16/21	PRELIMINARY FISH PLAN
B		
0		
1		
2		
3		
4		
5		
6		

ARCHIS PROJECT NO.:

DRAWN BY:	CHECKED BY:
YP	SH



PREPARED BY:



350 E. Crown Point Road, Suite 1100
Winter Garden, FL 34787
Main: 888.324.2557
Direct: 407.439.1594

DATE
_____, PE
FL PROFESSIONAL ENGINEER LIC. #

**Treadway
Elementary School
(FISH PLAN)**
10619 Treadway School
Rd, Leesburg, FL

SHEET DESCRIPTION
AERIAL VIEW

SHEET NUMBER
SP-01

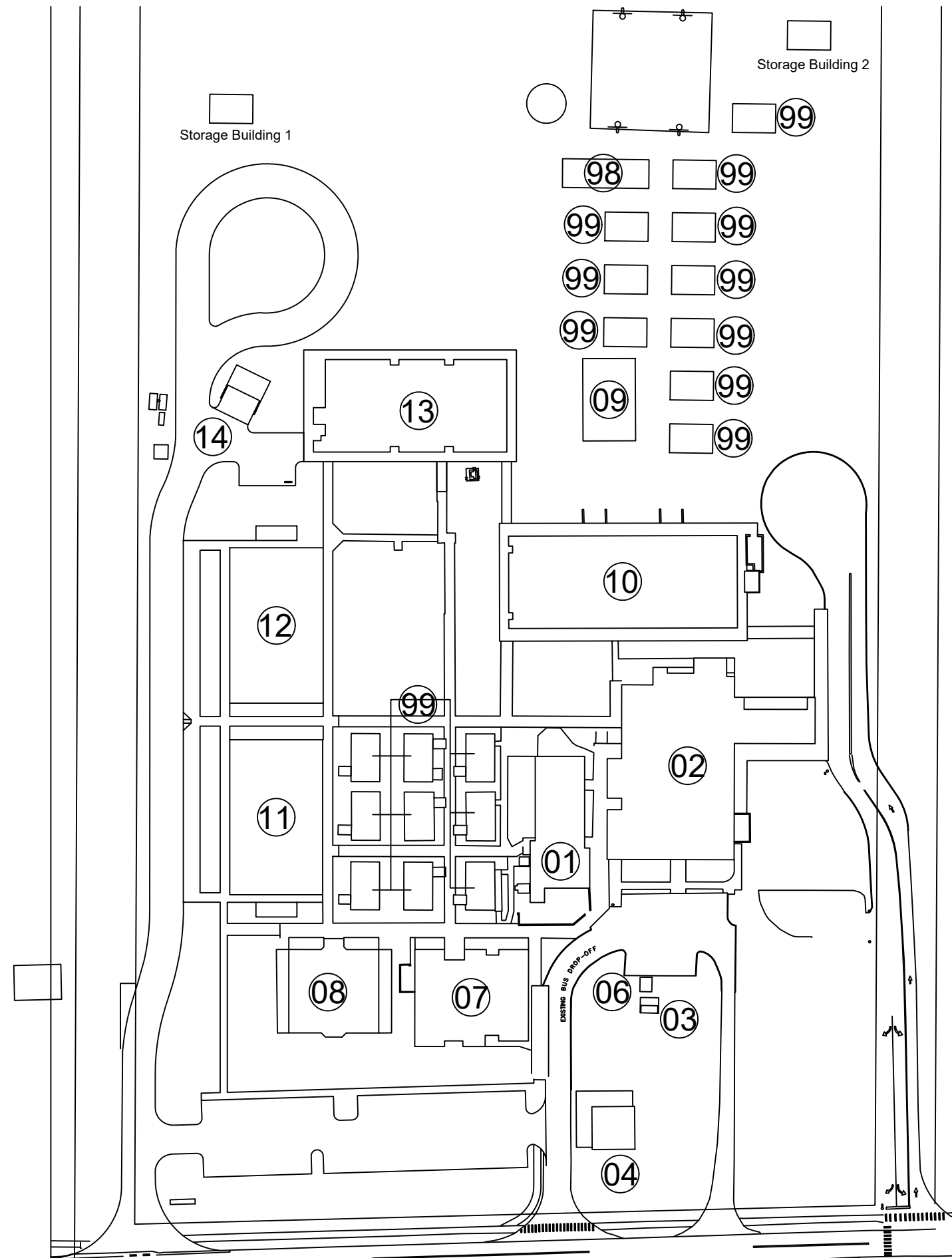
1 AERIAL VIEW
SP-01 SCALE: N.T.S.

ARCHIS TECHNOLOGIES - \\server-1\H\Archis\21-014 Treadway ES\From ISP\2021-03-03\896_Lake County_Treadway_ES.dwg March 3, 2021 12:28:16 PC20

ARCHIS TECHNOLOGIES - \\server-1\H\Archis\21-014 Treadway ES\From ISP\2021-03-03\896_Lake County_Treadway_ES.dwg March 3, 2021 12:28:24 PC20

LEGEND

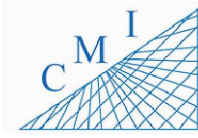
- 01-CAFETERIA
- 02-ADMIN/CLASSROOM
- 03-MECHANICAL ROOM
- 04-COVERED PE
- 06-FLAMMABLE STORAGE
- 07-MEDIA CENTER
- 08-CLASSROOM
- 09-COVERED PE
- 10-CLASSROOM
- 11-CLASSROOM
- 12-CLASSROOM
- 13-AUDITORIUM/CAFETERIA
- 14-EQUIPMENT YARD
- 98-PORTABLES
- 99-PORTABLES



1
SP-02 **OVERALL SITE PLAN**
SCALE: N.T.S.

REV	DATE	DESCRIPTION
A	02/16/21	PRELIMINARY FISH PLAN
B		
0		
1		
2		
3		
4		
5		
6		

ARCHIS PROJECT NO.:	
DRAWN BY:	CHECKED BY:
YP	SH



158 Terra Mango Loop, Suite B,
Orlando, FL 32835
Main: (407) 293-4168

PREPARED BY:



350 E. Crown Point Road, Suite 1100
Winter Garden, FL 34787
Main: 888.324.2557
Direct: 407.439.1594

DATE

, PE

FL PROFESSIONAL ENGINEER LIC. #

Treadway Elementary School (FISH PLAN)

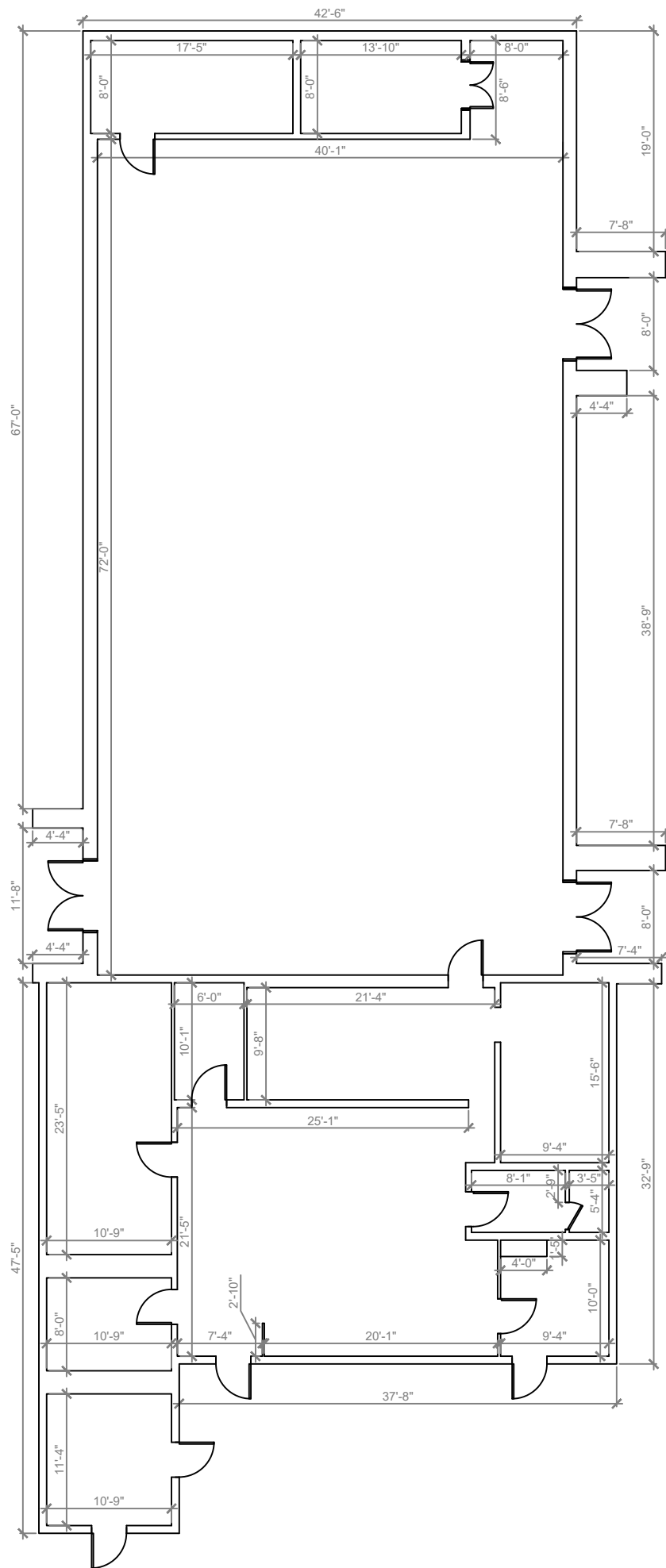
10619 Treadway School Rd, Leesburg, FL

OVERALL SITE PLAN

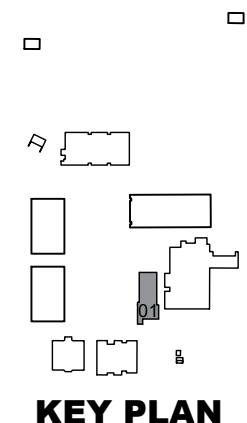
SHEET NUMBER

SP-02

ARCHIS TECHNOLOGIES - \\server-1\H\Archis\21-014 Treadway ES\From ISP\2021-03-03\896_Lake County_Treadway_ES.dwg March 3, 2021 12:28:24 PC20



1
B-01 **BUILDING 01 FLOOR PLAN**
SCALE: 3/16"=1'-0"



REV	DATE	DESCRIPTION
A	02/16/21	PRELIMINARY FISH PLAN
B		
0		
1		
2		
3		
4		
5		
6		

ARCHIS PROJECT NO.:
DRAWN BY: YP
CHECKED BY: SH



CMI
158 Terra Mango Loop, Suite B,
Orlando, FL 32835
Main: (407) 293-4168

PREPARED BY:
ARCHIS
350 E. Crown Point Road, Suite 1100
Winter Garden, FL 34787
Main: 888.324.2557
Direct: 407.439.1594

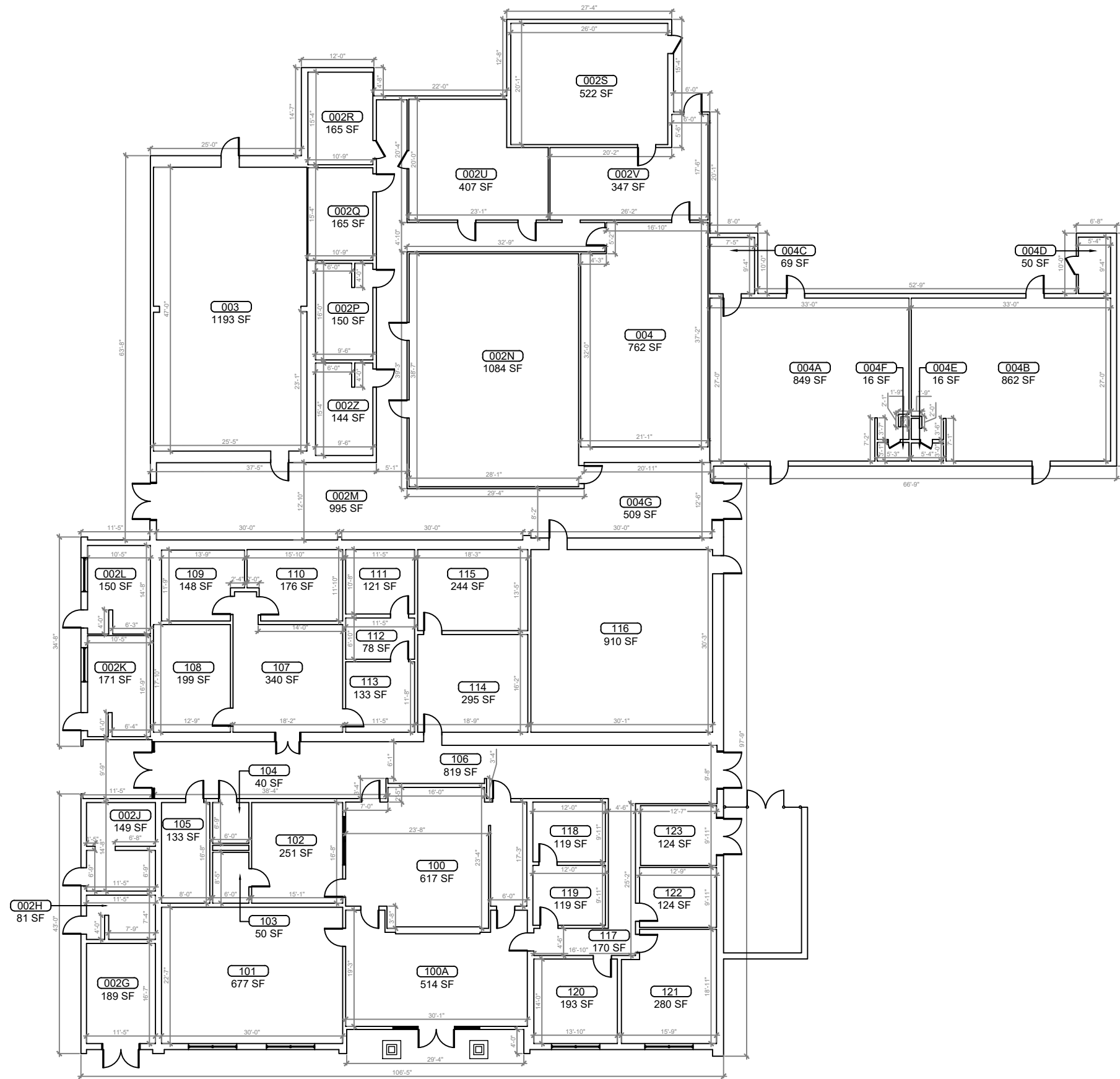
DATE
PE
FL PROFESSIONAL ENGINEER LIC. #

Treadway Elementary School (FISH PLAN)
10619 Treadway School Rd, Leesburg, FL

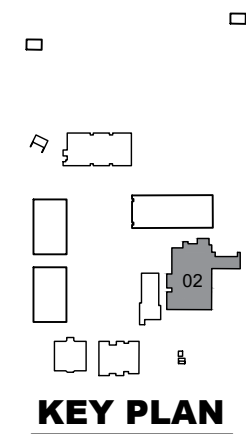
SHEET DESCRIPTION
BUILDING 01

SHEET NUMBER
B-01

server-1\H\Archis\21-014_Treadway ES\From ISP\2021-03-03\896_Lake County_Treadway_ES.dwg March 3, 2021 12:28:29 PC20



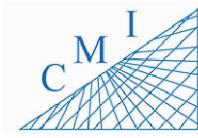
1 BUILDING 02
B-02 SCALE: 1/8"=1'-0"



KEY PLAN

REV	DATE	DESCRIPTION
A	02/16/21	PRELIMINARY FISH PLAN
B		
0		
1		
2		
3		
4		
5		
6		

ARCHIS PROJECT NO.:	
DRAWN BY:	CHECKED BY:
YP	SH



158 Terra Mango Loop, Suite B,
Orlando, FL 32835
Main: (407) 293-4168

PREPARED BY:

350 E. Crown Point Road, Suite 1100
Winter Garden, FL 34787
Main: 888.324.2557
Direct: 407.439.1594

DATE
, PE
FL PROFESSIONAL ENGINEER LIC. #

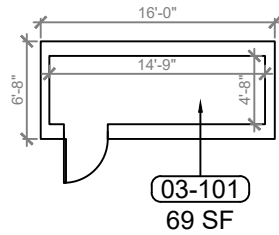
Treadway Elementary School (FISH PLAN)

10619 Treadway School Rd, Leesburg, FL

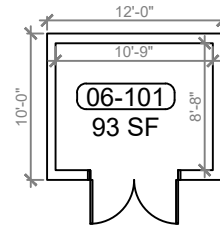
SHEET DESCRIPTION
BUILDING 02

SHEET NUMBER
B-02

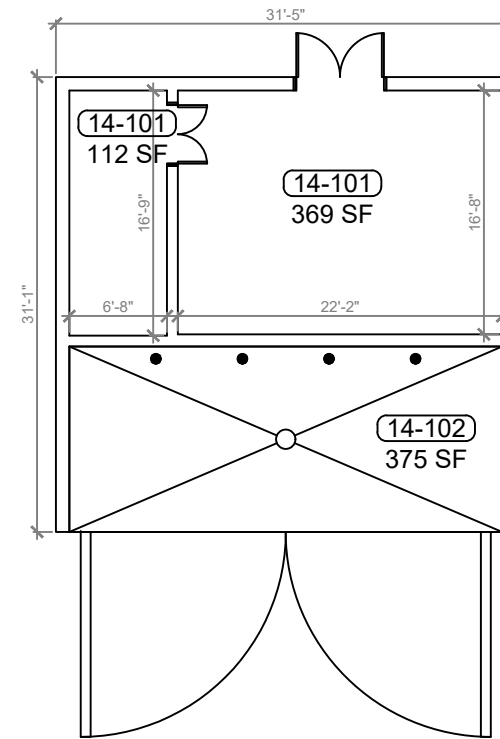
ARCHIS TECHNOLOGIES - \\server-1\H\Archis\21-014 Treadway ES\From ISP\2021-03-03\896_Lake County_Treadway_ES.dwg March 3, 2021 12:28:34 PC20



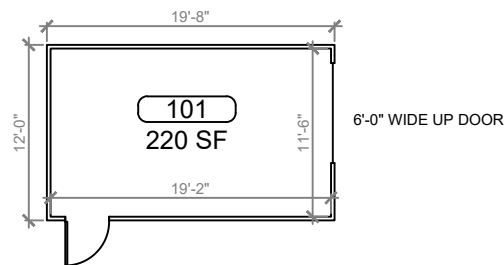
1 BUILDING 03 FLOOR PLAN
SCALE: 3/16"=1'-0"



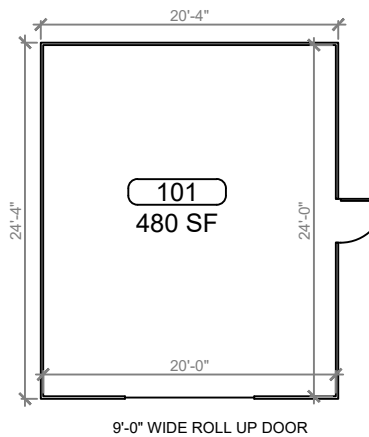
2 BUILDING 06 FLOOR PLAN
SCALE: 3/16"=1'-0"



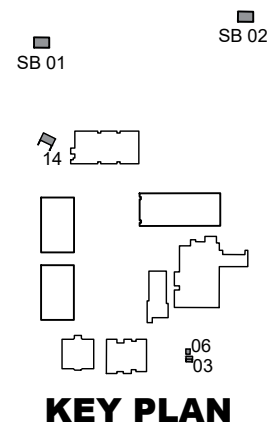
3 BUILDING 14 FLOOR PLAN
SCALE: 3/16"=1'-0"



4 STORAGE BUILDING 01 FLOOR PLAN
SCALE: 3/16"=1'-0"



5 STORAGE BUILDING 02 FLOOR PLAN
SCALE: 3/16"=1'-0"



REV	DATE	DESCRIPTION
A	02/16/21	PRELIMINARY FISH PLAN
B		
0		
1		
2		
3		
4		
5		
6		

ARCHIS PROJECT NO.:
DRAWN BY: YP
CHECKED BY: SH



CMI
158 Terra Mango Loop, Suite B,
Orlando, FL 32835
Main: (407) 293-4168

PREPARED BY:
ARCHIS
350 E. Crown Point Road, Suite 1100
Winter Garden, FL 34787
Main: 888.324.2557
Direct: 407.439.1594

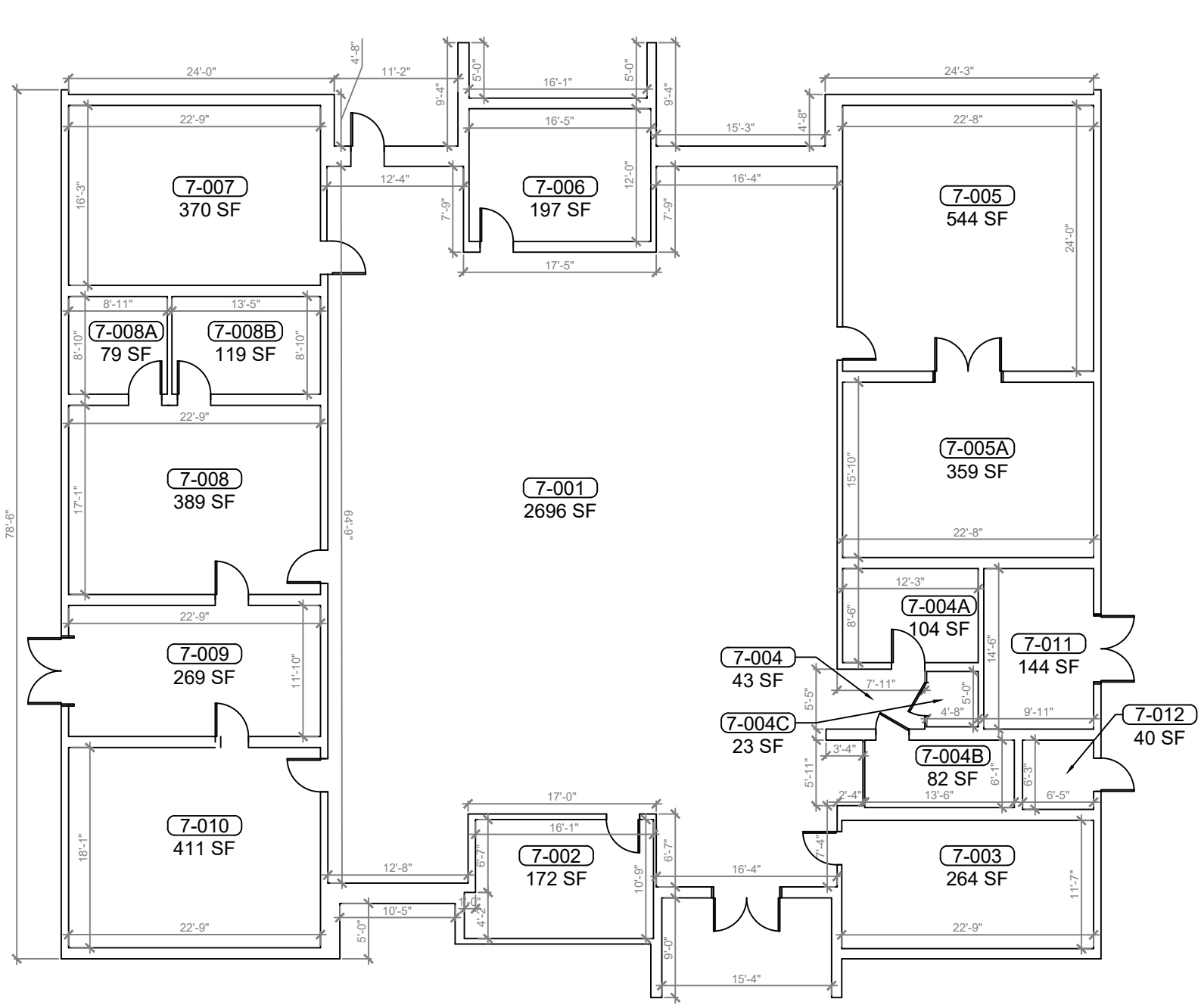
DATE
, PE
FL PROFESSIONAL ENGINEER LIC. #

Treadway Elementary School (FISH PLAN)
10619 Treadway School Rd, Leesburg, FL

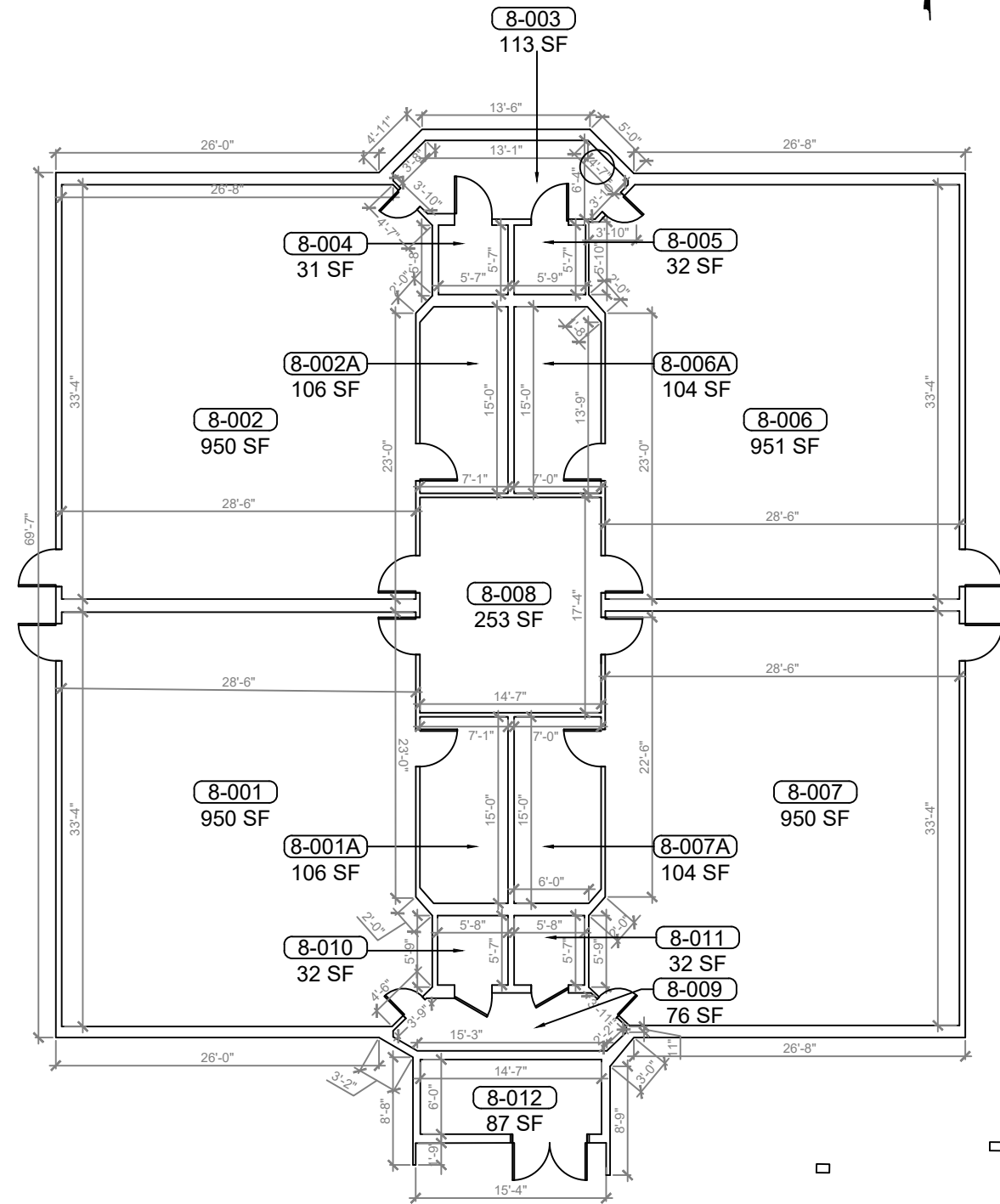
BUILDING 03, 06, 14, SB 01, SB 02

SHEET NUMBER
B-03

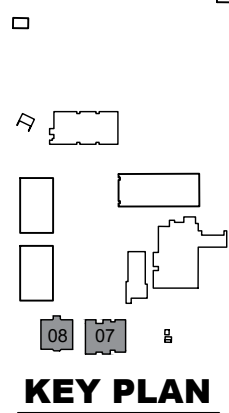
ARCHIS TECHNOLOGIES - \\server-1\H\Archis\21-014 Treadway ES\From ISP\2021-03-03\896_Lake County_Treadway_ES.dwg March 3, 2021 12:28:39 PC20



1 BUILDING 07 FLOOR PLAN
SCALE: 3/16"=1'-0"



2 BUILDING 08 FLOOR PLAN
SCALE: 3/16"=1'-0"



KEY PLAN

REV	DATE	DESCRIPTION
A	02/16/21	PRELIMINARY FISH PLAN
B		
0		
1		
2		
3		
4		
5		
6		

ARCHIS PROJECT NO.:
DRAWN BY: YP
CHECKED BY: SH



CMI
158 Terra Mango Loop, Suite B,
Orlando, FL 32835
Main: (407) 293-4168

PREPARED BY:
ARCHIS
350 E. Crown Point Road, Suite 1100
Winter Garden, FL 34787
Main: 888.324.2557
Direct: 407.439.1594

DATE
, PE
FL PROFESSIONAL ENGINEER LIC. #

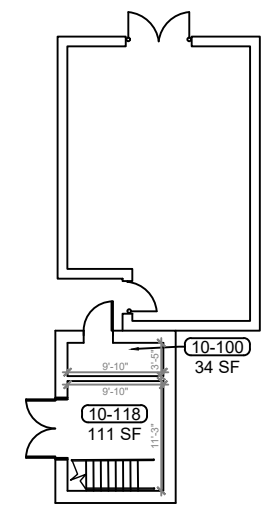
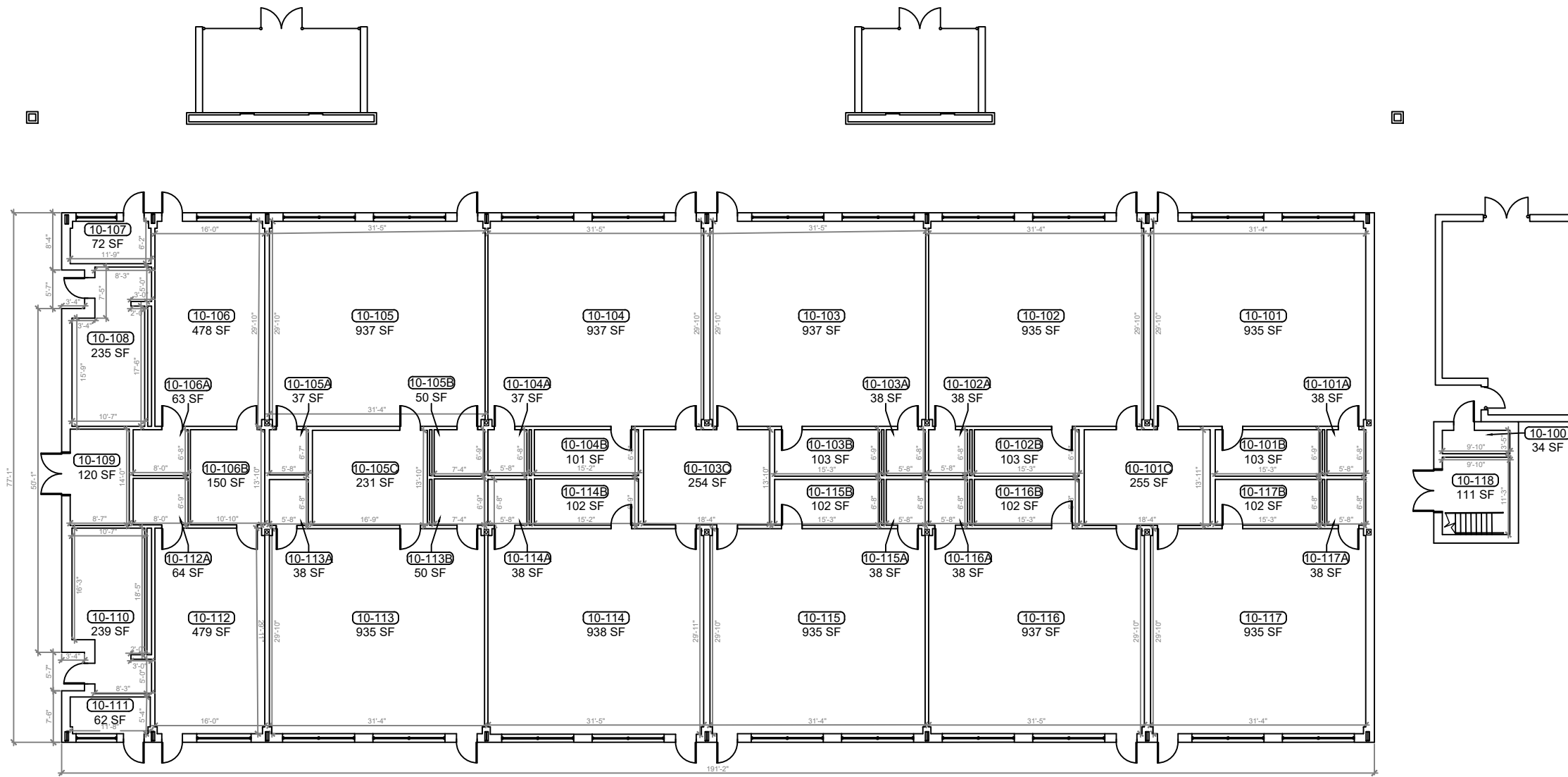
Treadway Elementary School (FISH PLAN)

10619 Treadway School Rd, Leesburg, FL

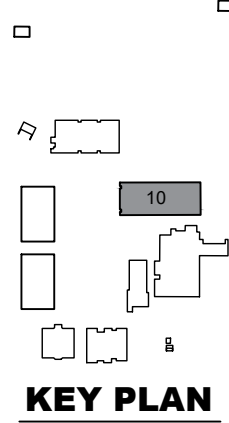
BUILDING 07 & 08

SHEET NUMBER
B-04

ARCHIS TECHNOLOGIES - \\server-1\H\Archis\21-014 Treadway ES\2021-03-03\896_Lake County_Treadway_ES.dwg March 3, 2021 12:28:44 PC20



1 BUILDING 10 FLOOR PLAN
B-05 SCALE: 1/8"=1'-0"



REV	DATE	DESCRIPTION
A	02/16/21	PRELIMINARY FISH PLAN
B		
0		
1		
2		
3		
4		
5		
6		

ARCHIS PROJECT NO.:
 DRAWN BY: YP
 CHECKED BY: SH



CM I
 158 Terra Mango Loop, Suite B,
 Orlando, FL 32835
 Main: (407) 293-4168

PREPARED BY:
ARCHIS
 350 E. Crown Point Road, Suite 1100
 Winter Garden, FL 34787
 Main: 888.324.2557
 Direct: 407.439.1594

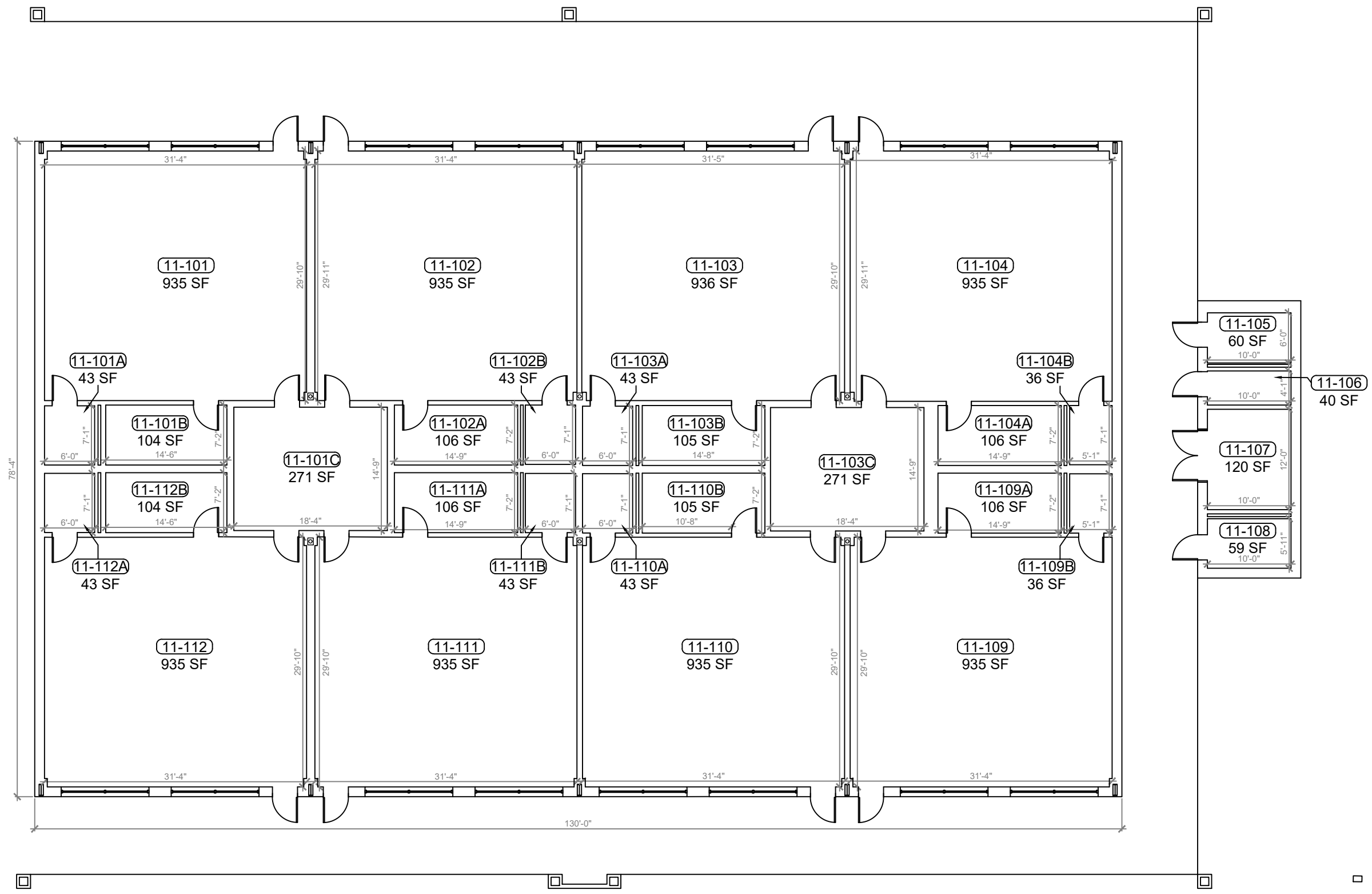
DATE
 , PE
 FL PROFESSIONAL ENGINEER LIC. #

Treadway Elementary School (FISH PLAN)
 10619 Treadway School Rd, Leesburg, FL

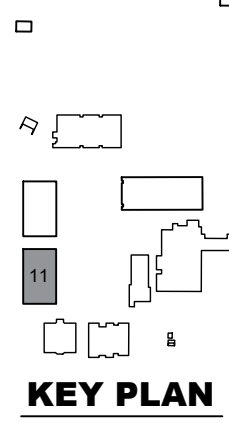
SHEET DESCRIPTION
BUILDING 10

SHEET NUMBER
B-05

ARCHIS TECHNOLOGIES - \\server-1\H\Archis\21-014 Treadway ES\From ISP\2021-03-03\896_Lake County_Treadway_ES.dwg March 3, 2021 12:28:49 PC20



1 BUILDING 11 FLOOR PLAN
 B-06 SCALE: 3/16"=1'-0"



REV	DATE	DESCRIPTION
A	02/16/21	PRELIMINARY FISH PLAN
B		
0		
1		
2		
3		
4		
5		
6		

ARCHIS PROJECT NO.:
 DRAWN BY: YP
 CHECKED BY: SH



CM I
 158 Terra Mango Loop, Suite B,
 Orlando, FL 32835
 Main: (407) 293-4168

PREPARED BY:
ARCHIS
 350 E. Crown Point Road, Suite 1100
 Winter Garden, FL 34787
 Main: 888.324.2557
 Direct: 407.439.1594

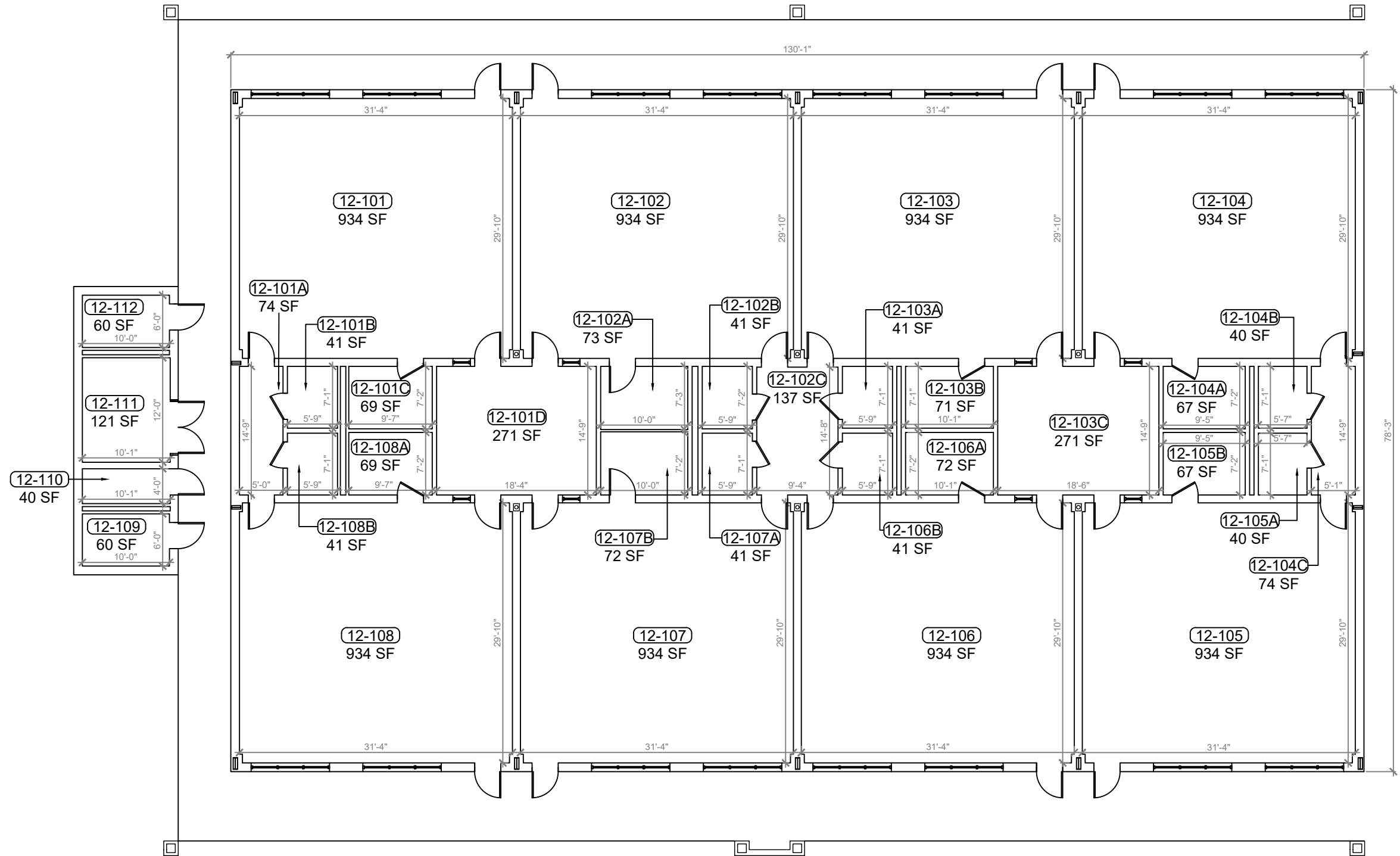
DATE
 , PE
 FL PROFESSIONAL ENGINEER LIC. #

**Treadway
 Elementary School
 (FISH PLAN)**
 10619 Treadway School
 Rd, Leesburg, FL

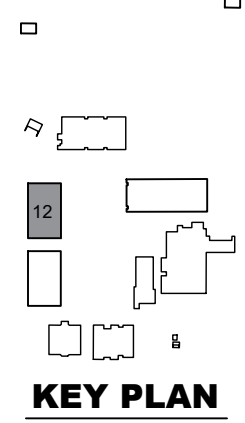
SHEET DESCRIPTION
BUILDING 11

SHEET NUMBER
B-06

ARCHIS TECHNOLOGIES - \\server-1\H\Archis\21-014 Treadway ES\From ISP\2021-03-03\896_Lake County_Treadway_ES.dwg March 3, 2021 12:28:54 PC20



1 BUILDING 12 FLOOR PLAN
 B-07 SCALE: 3/16"=1'-0"



REV	DATE	DESCRIPTION
A	02/16/21	PRELIMINARY FISH PLAN
B		
0		
1		
2		
3		
4		
5		
6		

ARCHIS PROJECT NO.:
 DRAWN BY: YP
 CHECKED BY: SH



CMI
 158 Terra Mango Loop, Suite B,
 Orlando, FL 32835
 Main: (407) 293-4168

PREPARED BY:
ARCHIS
 350 E. Crown Point Road, Suite 1100
 Winter Garden, FL 34787
 Main: 888.324.2557
 Direct: 407.439.1594

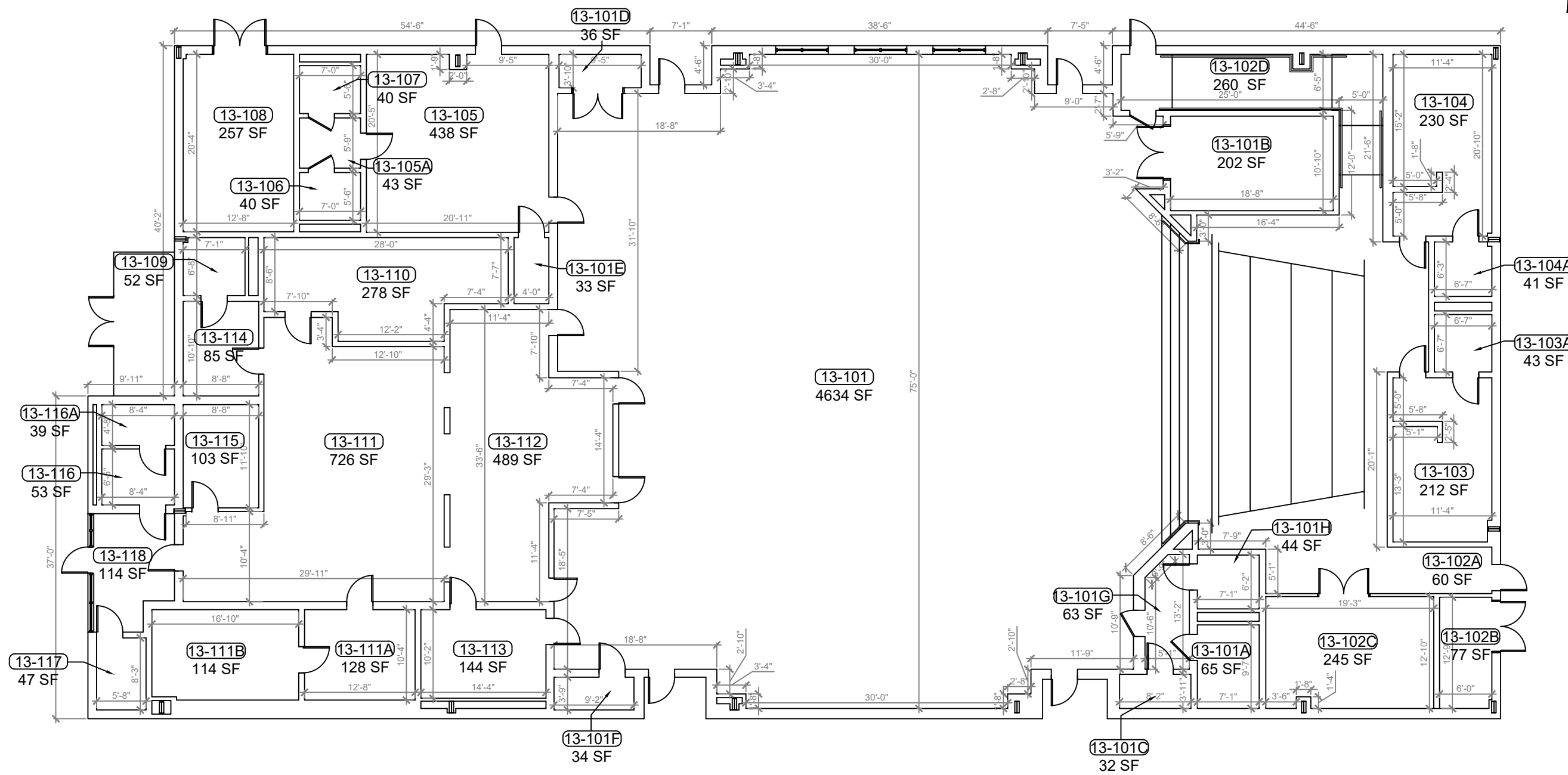
DATE
 , PE
 FL PROFESSIONAL ENGINEER LIC. #

Treadway Elementary School (FISH PLAN)
 10619 Treadway School Rd, Leesburg, FL

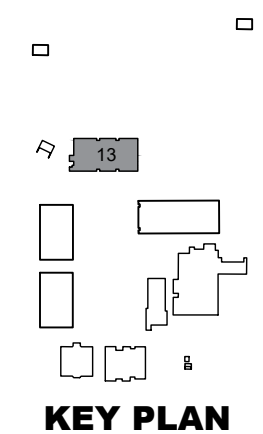
SHEET DESCRIPTION
BUILDING 12

SHEET NUMBER
B-07

ARCHIS TECHNOLOGIES - \\server-1\H\Archis\21-014 Treadway ES\2021-03-03\896_Lake County_Treadway_ES.dwg March 3, 2021 12:28:59 PC20



1 BUILDING 13 FLOOR PLAN
 B-08 SCALE: 3/16"=1'-0"



REV	DATE	DESCRIPTION
A	02/16/21	PRELIMINARY FISH PLAN
B		
0		
1		
2		
3		
4		
5		
6		

ARCHIS PROJECT NO.:
 DRAWN BY: YP CHECKED BY: SH



CMI
 158 Terra Mango Loop, Suite B,
 Orlando, FL 32835
 Main: (407) 293-4168

PREPARED BY:
ARCHIS
 350 E. Crown Point Road, Suite 1100
 Winter Garden, FL 34787
 Main: 888.324.2557
 Direct: 407.439.1594

DATE
 , PE
 FL PROFESSIONAL ENGINEER LIC. #

Treadway Elementary School (FISH PLAN)
 10619 Treadway School Rd, Leesburg, FL

SHEET DESCRIPTION
BUILDING 13

SHEET NUMBER
B-08