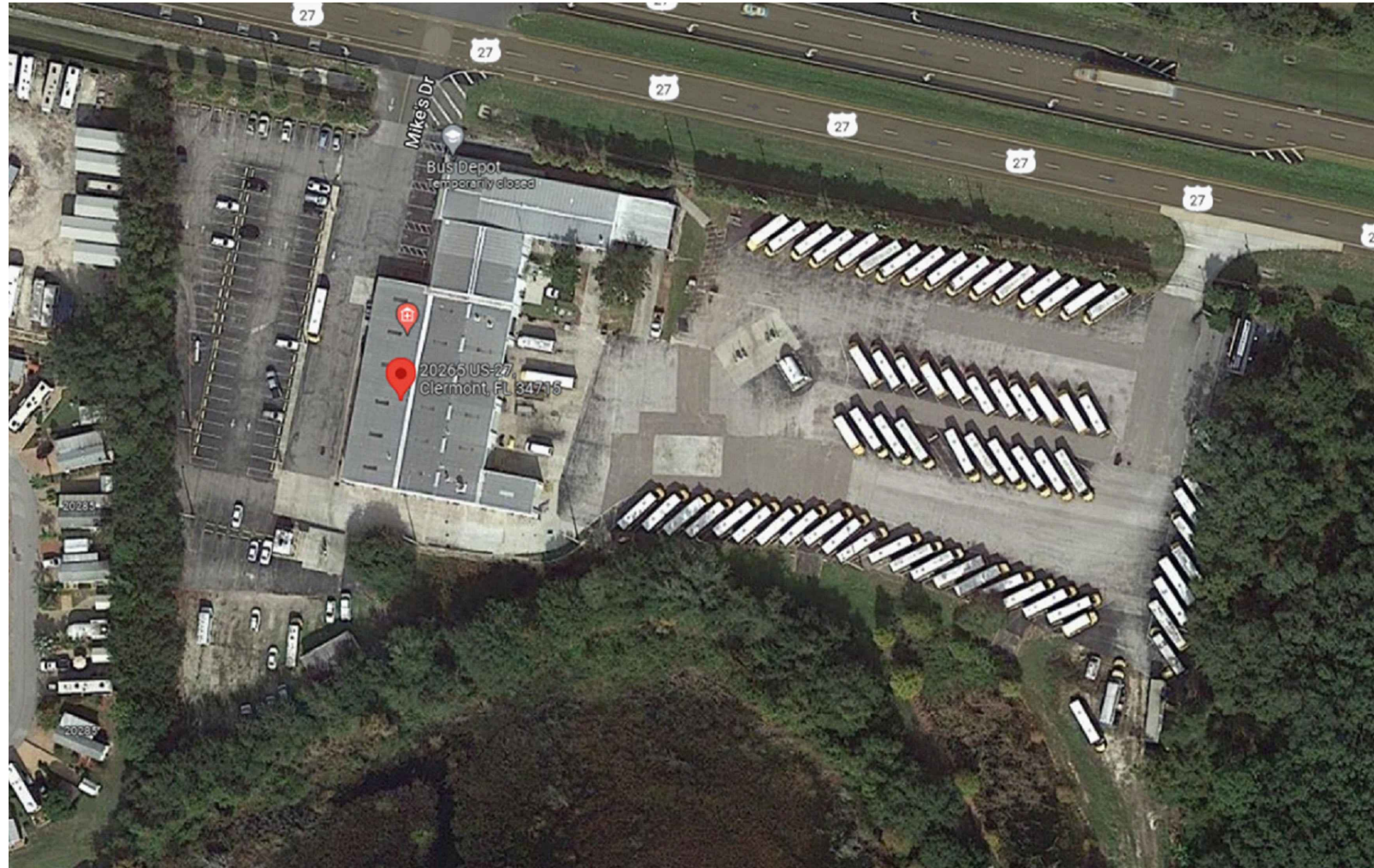


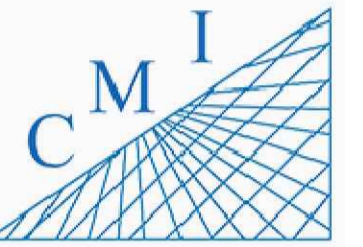
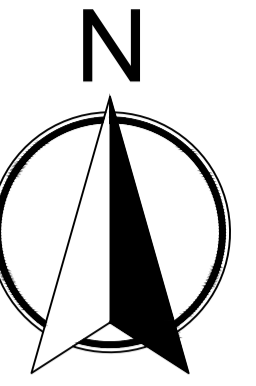
US 27 Transportation & Wellness Center




1 F.I.S.H PLAN_AERIAL VIEW
 SCALE: N.T.S.

INDEX OF DRAWINGS

SHT. NO.	DESCRIPTION
S-1	AERIAL VIEW
S-2	OVERALL SITE PLAN
F-1	FIRST FLOOR
F-2	SECOND FLOOR



158 Terra Mango Loop, Suite B,
Orlando, FL 32835
Main: (407) 293-4168

PREPARED BY:



350 E. Crown Point Road, Suite 1100
Winter Garden, FL 34787
Main: 888.324.2557
Direct: 407.439.1594

Keynotes

General Notes

REV	DATE	DESCRIPTION

US 27 Transportation & Wellness Center
 20265 US Highway 27 Clermont
 FL 34715

F.I.S.H PLAN

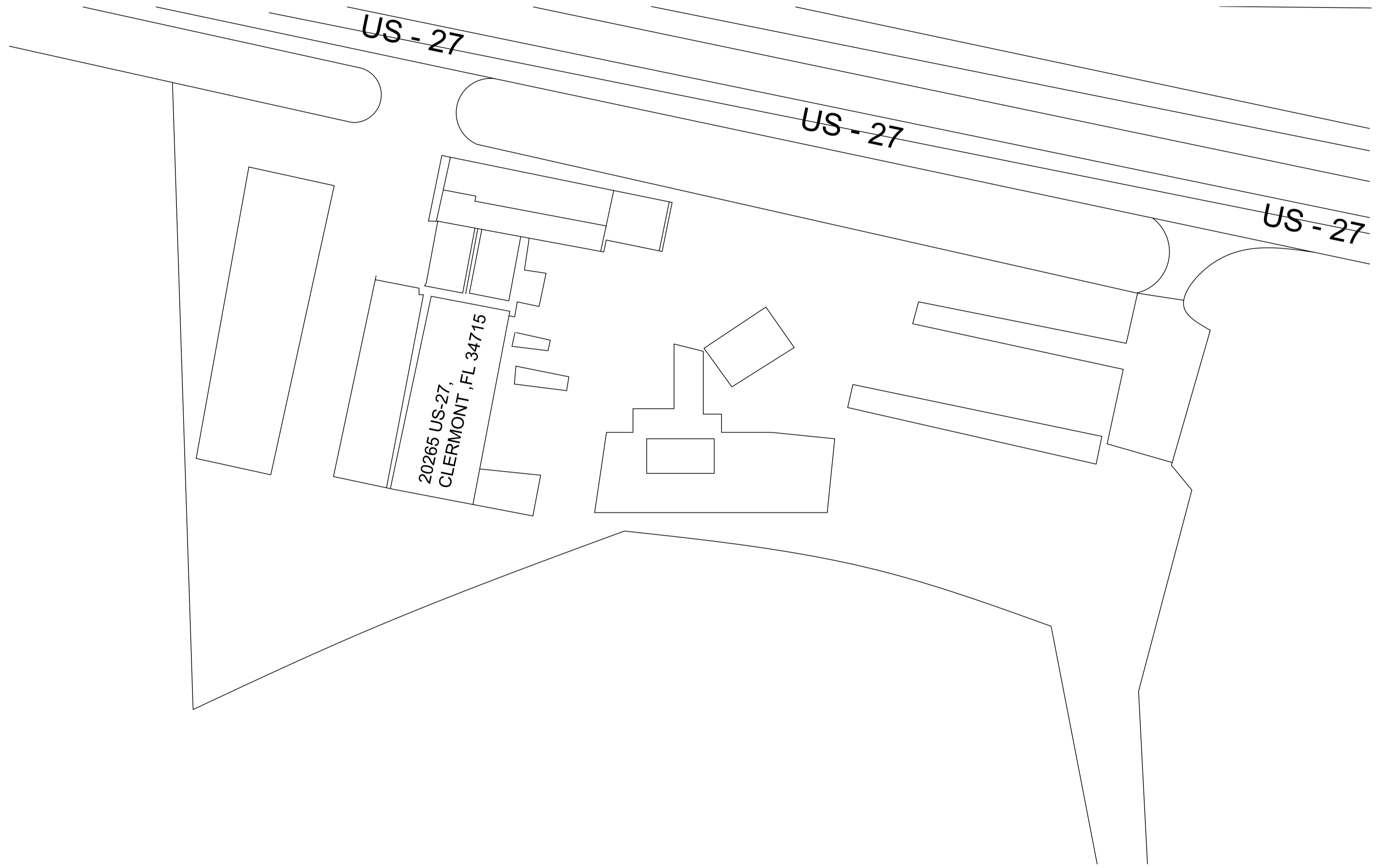
SHEET DESCRIPTION

AERIAL VIEW

SHEET NUMBER

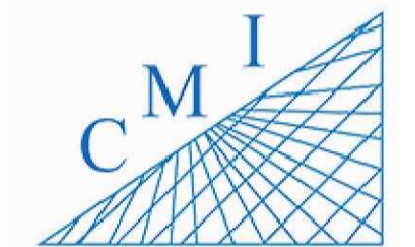
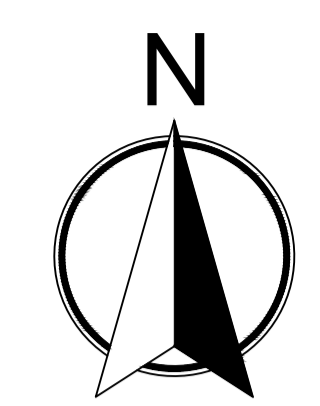
S-1

ARCHIS TECHNOLOGIES - D:\US\AUTOCAD FILE\US 27 Transportation & Wellness (First & Second Floor).dwg November 3, 2022 8:55:23 PM HP



1 F.I.S.H PLAN OVERALL SITE PLAN
SCALE: 1/16"=1'-0"

LEGEND	
US 27	TRANSPORTATION & WELLNESS CENTER



158 Terra Mango Loop, Suite B,
Orlando, FL 32835
Main: (407) 293-4168

PREPARED BY:



350 E. Crown Point Road, Suite 1100
Winter Garden, FL 34787
Main: 888.324.2557
Direct: 407.439.1594

Keynotes

General Notes

REV	DATE	DESCRIPTION

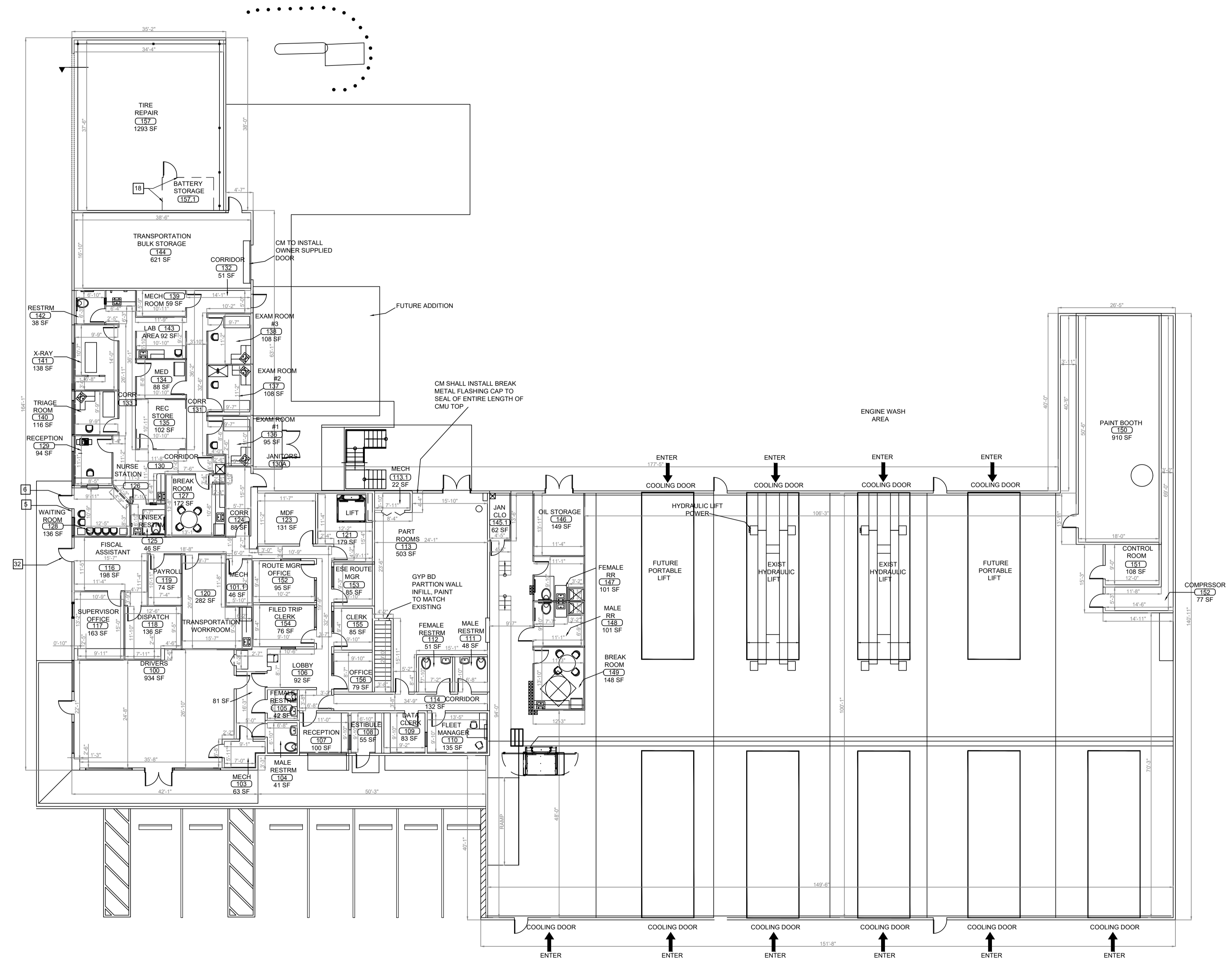
US 27 Transportation & Wellness Center
20265 US Highway 27 Clermont
FL 34715

F.I.S.H PLAN

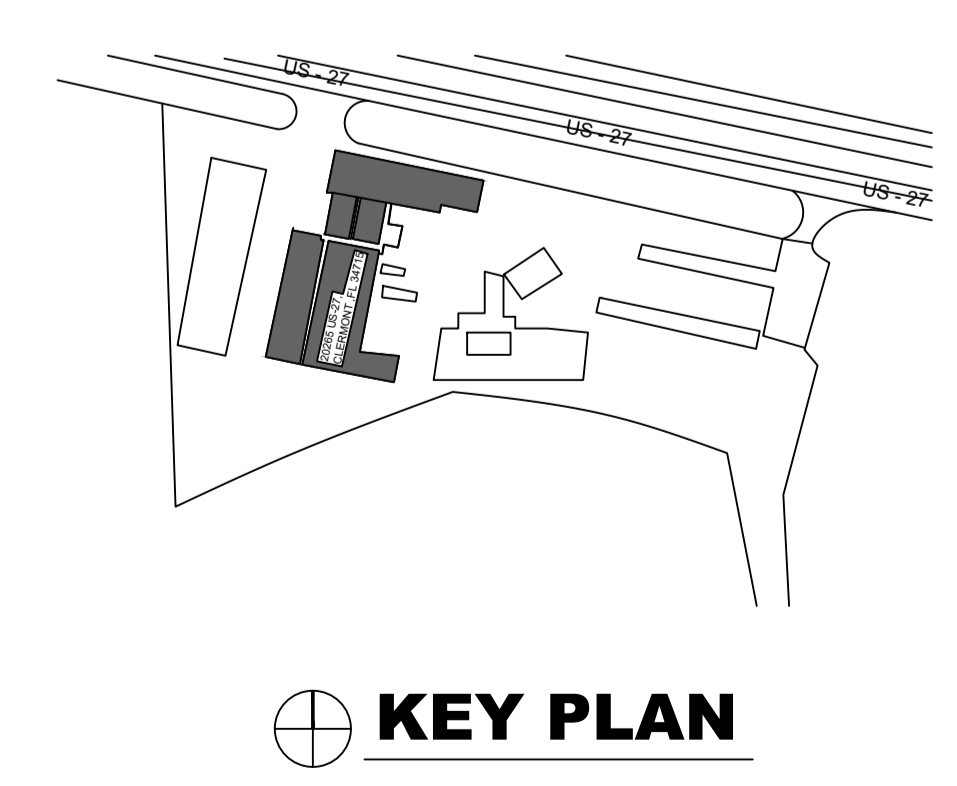
SHEET DESCRIPTION
OVERALL SITE PLAN

SHEET NUMBER
S-2

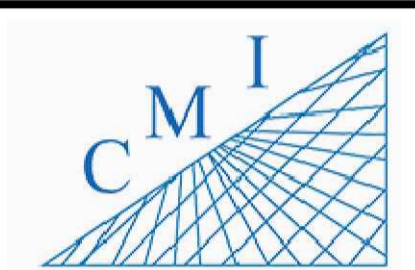
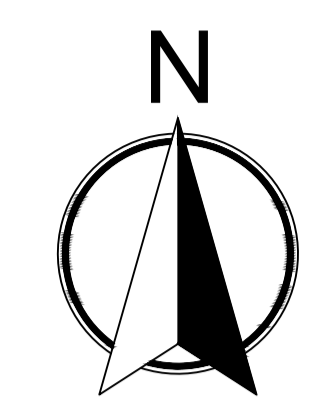
ARCHIS TECHNOLOGIES - D:\US\AUTOCAD FILE\US 27 Transportation & Wellness (First & Second Floor).dwg November 3, 2022 8:55:23 PM HP



1 F.I.S.H PLAN FIRST FLOOR
SCALE: 3/32"=1'-0"



KEY PLAN



158 Terra Mango Loop, Suite B,
Orlando, FL 32835
Main: (407) 293-4168

PREPARED BY:



350 E. Crown Point Road, Suite 1100
Winter Garden, FL 34787
Main: 888.324.2557
Direct: 407.439.1594

Keynotes

General Notes

REV	DATE	DESCRIPTION

US 27 Transportation & Wellness Center
20265 US Highway 27 Clermont
FL 34715

F.I.S.H PLAN

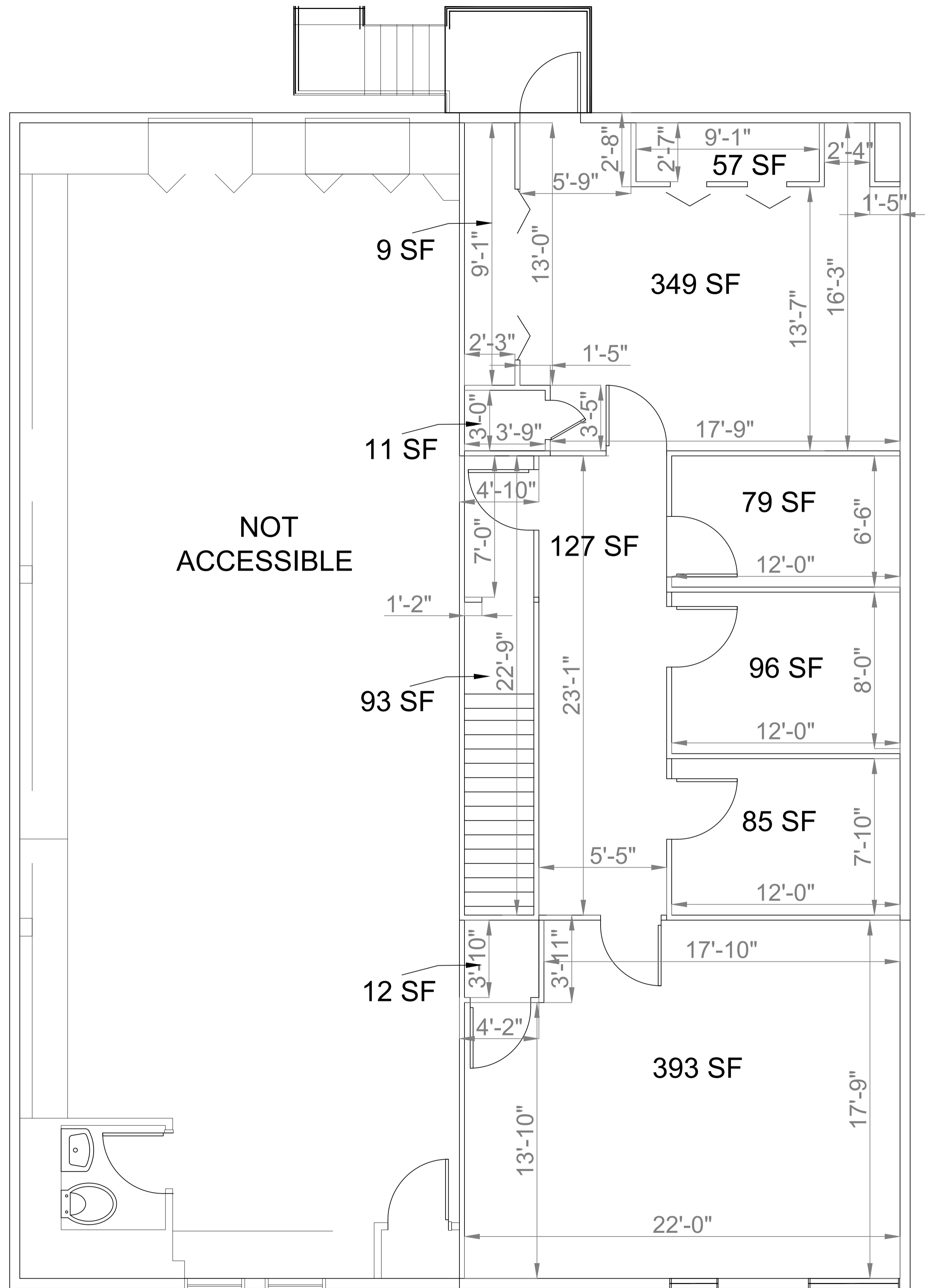
SHEET DESCRIPTION

FIRST FLOOR

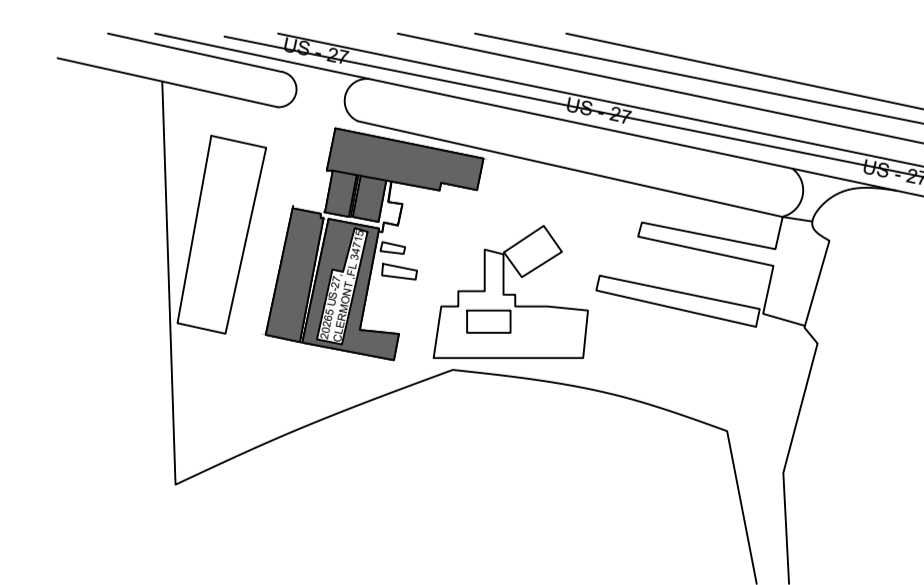
SHEET NUMBER

F-1

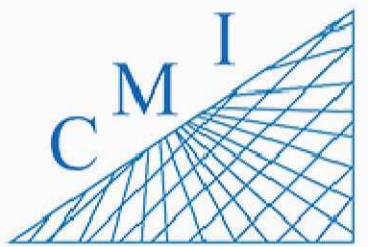
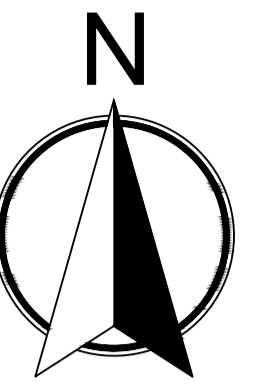
ARCHIS TECHNOLOGIES - D:\US\AUTOCAD FILE\US 27 Transportation & Wellness (First & Second Floor).dwg November 3, 2022 8:55:23 PM HP



1 F.I.S.H PLAN SECOND FLOOR
SCALE: 3/8"=1'-0"



KEY PLAN



158 Terra Mango Loop, Suite B,
Orlando, FL 32835
Main: (407) 293-4168

PREPARED BY:



350 E. Crown Point Road, Suite 1100
Winter Garden, FL 34787
Main: 888.324.2557
Direct: 407.439.1594

Keynotes

General Notes

REV	DATE	DESCRIPTION

US 27 Transportation & Wellness Center
20265 US Highway 27 Clermont
FL 34715

F.I.S.H PLAN

SHEET DESCRIPTION

SECOND FLOOR

SHEET NUMBER

F-2