

TAVARES MIDDLE SCHOOL



REV	DATE	DESCRIPTION
A	02/25/21	PRELIMINARY FISH PLAN
B		
0		
1		
2		
3		
4		
5		
6		

ARCHIS PROJECT NO.:	
DRAWN BY: YP	CHECKED BY: SH



INDEX OF DRAWINGS	
SHT. NO.	DESCRIPTION
SP-01	AERIAL
SP-02	SITE PLAN
B-01	BUILDING 01
B-02	BUILDING 02
B-03	BUILDING 03 & 04
B-04.1	BUILDING 05 FIRST FLOOR
B-04.2	BUILDING 05 SECOND FLOOR
B-05	BUILDING 06
B-06	BUILDING 07
B-07	BUILDING 08 & 09
B-08	BUILDING 10 & GH



PREPARED BY:

350 E. Crown Point Road, Suite 1100
Winter Garden, FL 34787
Main: 888.324.2557
Direct: 407.439.1594

DATE
_____, PE
FL PROFESSIONAL ENGINEER LIC. #

Tavares Middle School
(FISH PLAN)
13032 Lane Park Cutoff Rd, Tavares, FL 32778

SHEET DESCRIPTION
AERIAL VIEW

SHEET NUMBER
SP-01

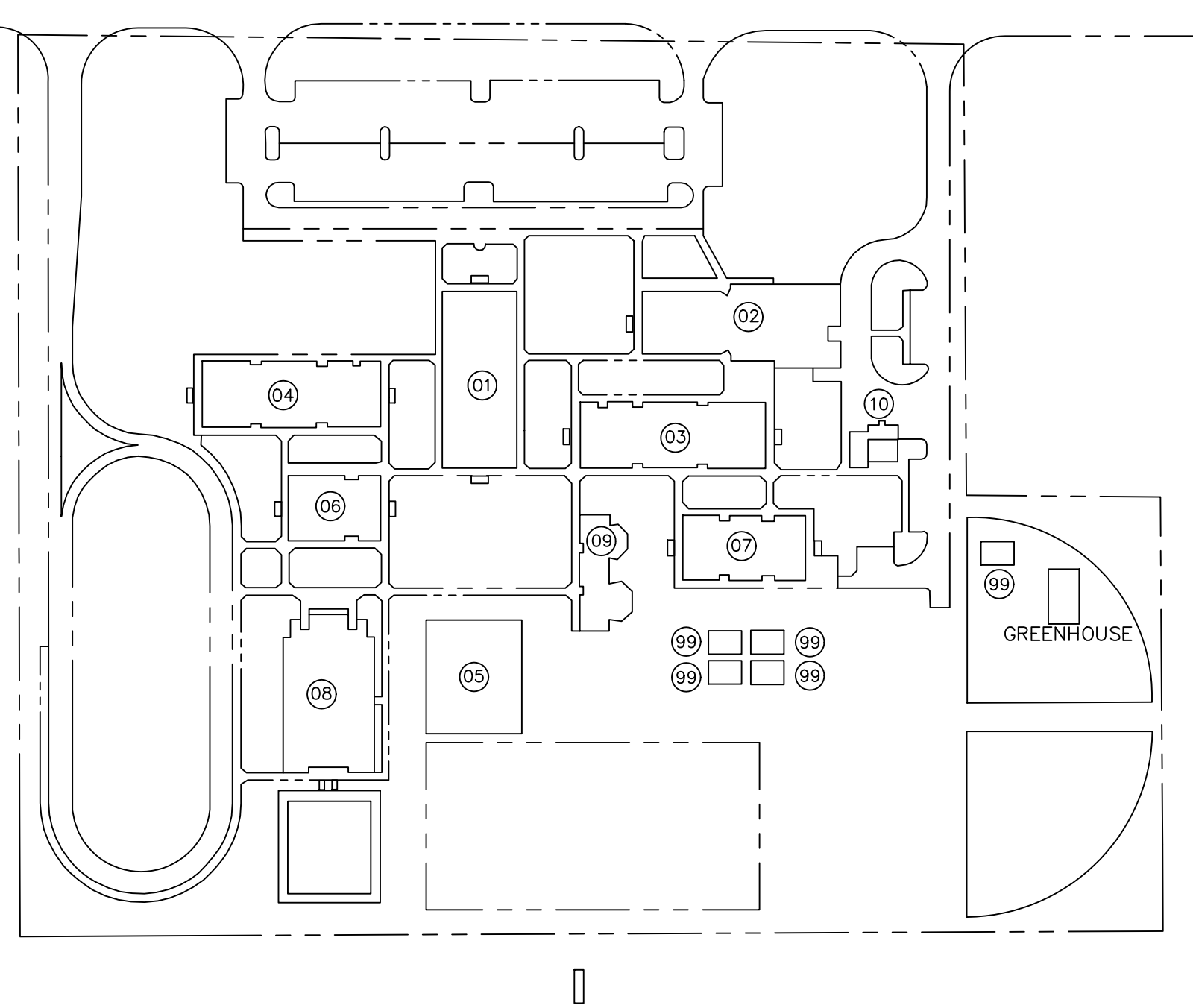
1 AERIAL VIEW
SP-01 SCALE: N.T.S.

ARCHIS TECHNOLOGIES - \\server-1\H\Archis\21-031 Tavares MS\From ISP\2021-02-25\896_Lake County Fish Survey_Tavares MS.dwg February 25, 2021 18:32:50 PC20

ARCHIS TECHNOLOGIES - \\server-1\H\Archis\21-031 Tavares MS\From ISP\2021-02-25\896_Lake County Fish Survey_Tavares MS.dwg February 25, 2021 18:33:00 PC20



- LEGEND**
- 01-ADMINISTRATION
 - 02-CAFETERIA
 - 03-CLASS ROOM
 - 04-CLASSROOM
 - 05-CLASSROOM
 - 06-CLASSROOM
 - 07-CLASSROOM
 - 08-GYM
 - 09-MUSIC
 - 10-MECHANICAL
 - 99-PORTABLE



1 OVERALL SITE PLAN
 SP-02 SCALE: 1/64"=1'-0"

REV	DATE	DESCRIPTION
A	02/25/21	PRELIMINARY FISH PLAN
B		
0		
1		
2		
3		
4		
5		
6		

ARCHIS PROJECT NO.:	
DRAWN BY:	CHECKED BY:
YP	SH



C M I
 158 Terra Mango Loop, Suite B,
 Orlando, FL 32835
 Main: (407) 293-4168

PREPARED BY:

 350 E. Crown Point Road, Suite 1100
 Winter Garden, FL 34787
 Main: 888.324.2557
 Direct: 407.439.1594

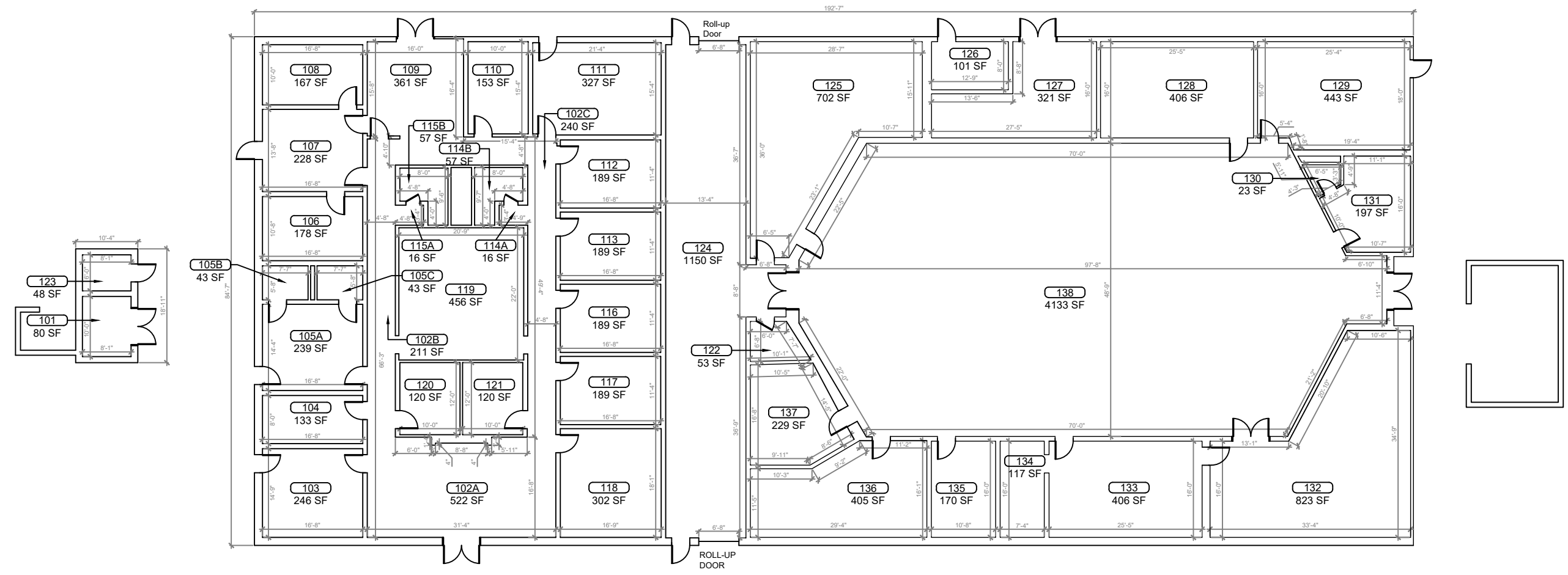
DATE

 , PE
 FL PROFESSIONAL ENGINEER LIC. #

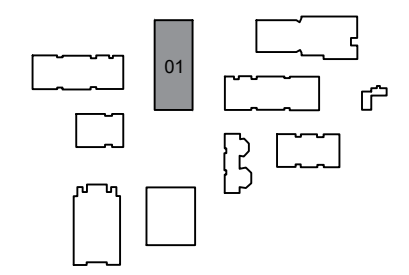
Tavares Middle School
(FISH PLAN)
 13032 Lane Park Cutoff Rd, Tavares, FL 32778
 SHEET DESCRIPTION
OVERALL SITE PLAN

SHEET NUMBER
SP-02

ARCHIS TECHNOLOGIES - \\server-1\H\Archis\21-031 Tavares MS\From ISP\2021-02-25\896_Lake County Fish Survey_MS.dwg February 25, 2021 18:33:04 PC20



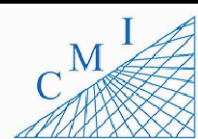
1 BUILDING 01 FLOOR PLAN
 B-01 SCALE: 1/8"=1'-0"



KEY PLAN

REV	DATE	DESCRIPTION
A	02/25/21	PRELIMINARY FISH PLAN
B		
0		
1		
2		
3		
4		
5		
6		

ARCHIS PROJECT NO.:	
DRAWN BY:	CHECKED BY:
YP	SH



158 Terra Mango Loop, Suite B,
 Orlando, FL 32835
 Main: (407) 293-4168

PREPARED BY:

350 E. Crown Point Road, Suite 1100
 Winter Garden, FL 34787
 Main: 888.324.2557
 Direct: 407.439.1594

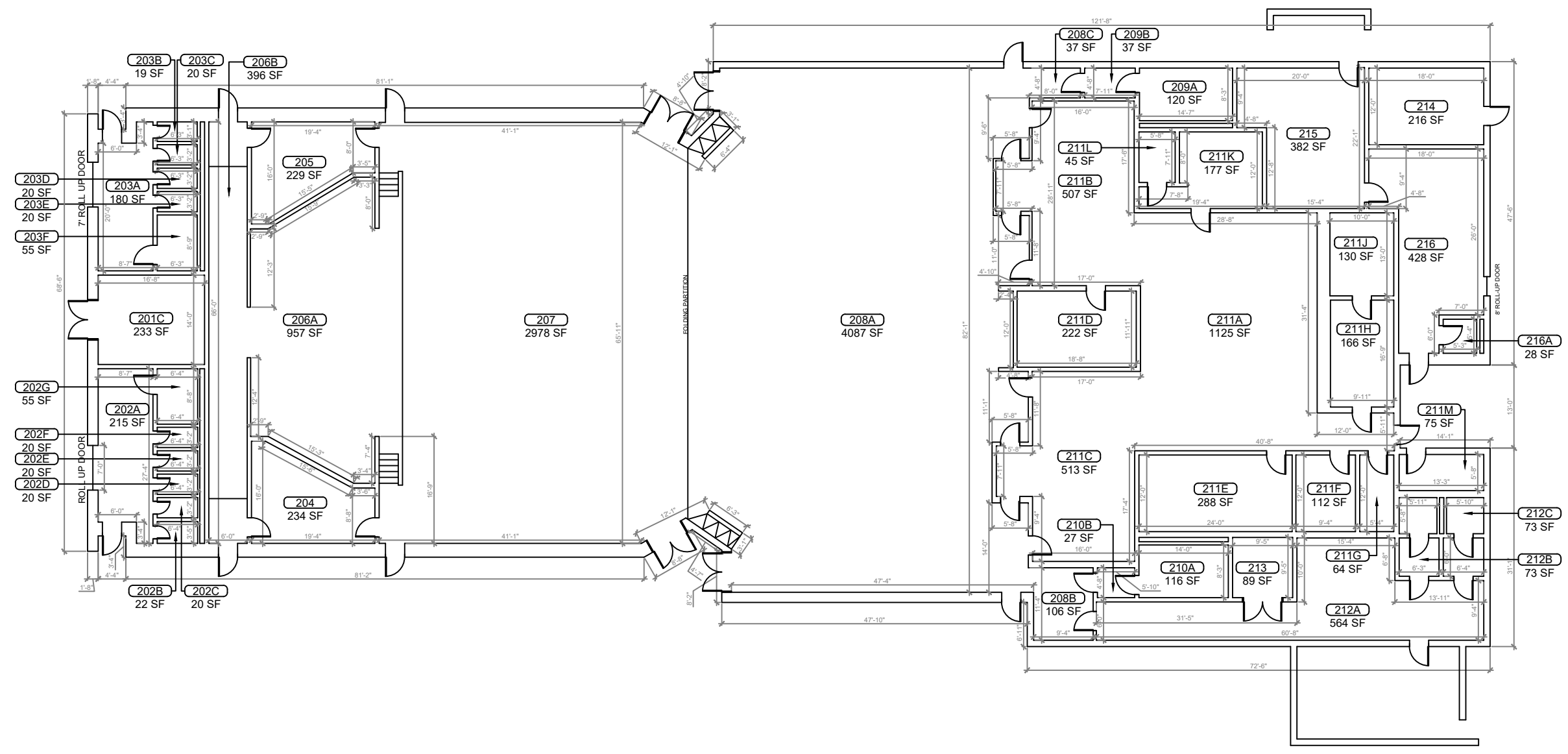
DATE
 , PE
 FL PROFESSIONAL ENGINEER LIC. #

Tavares Middle School
(FISH PLAN)
 13032 Lane Park Cutoff Rd, Tavares, FL 32778

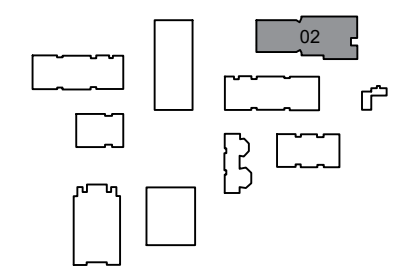
SHEET DESCRIPTION
BUILDING 01

SHEET NUMBER
B-01

ARCHIS TECHNOLOGIES - \\server-1\H\Archis\21-031 Tavares MS\From ISP\2021-02-25\896_Lake County Fish Survey_Tavares MS.dwg February 25, 2021 18:33:09 PC20



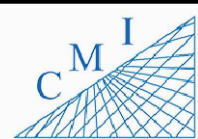
1 BUILDING 02 FLOOR PLAN
SCALE: 1/8"=1'-0"



KEY PLAN

REV	DATE	DESCRIPTION
A	02/25/21	PRELIMINARY FISH PLAN
B		
0		
1		
2		
3		
4		
5		
6		

ARCHIS PROJECT NO.:	
DRAWN BY:	CHECKED BY:
YP	SH



158 Terra Mango Loop, Suite B,
Orlando, FL 32835
Main: (407) 293-4168

PREPARED BY:



350 E. Crown Point Road, Suite 1100
Winter Garden, FL 34787
Main: 888.324.2557
Direct: 407.439.1594

DATE

, PE

FL PROFESSIONAL ENGINEER LIC. #

**Tavares Middle School
(FISH PLAN)**

13032 Lane Park Cutoff Rd, Tavares, FL 32778

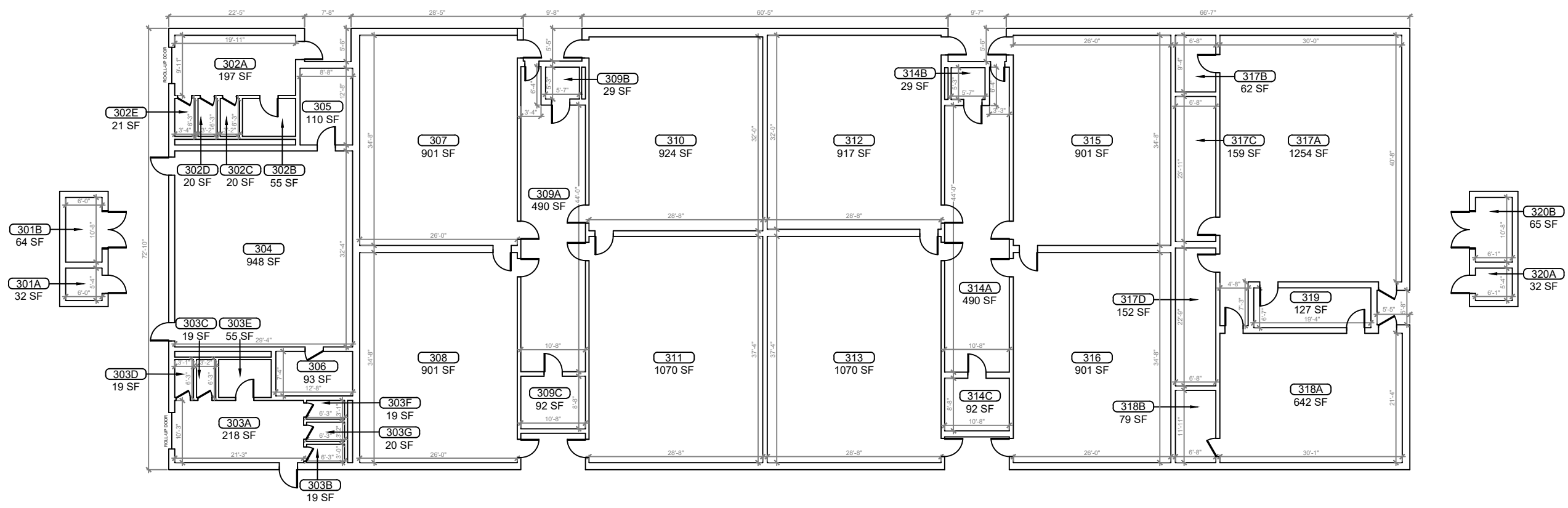
SHEET DESCRIPTION

BUILDING 02

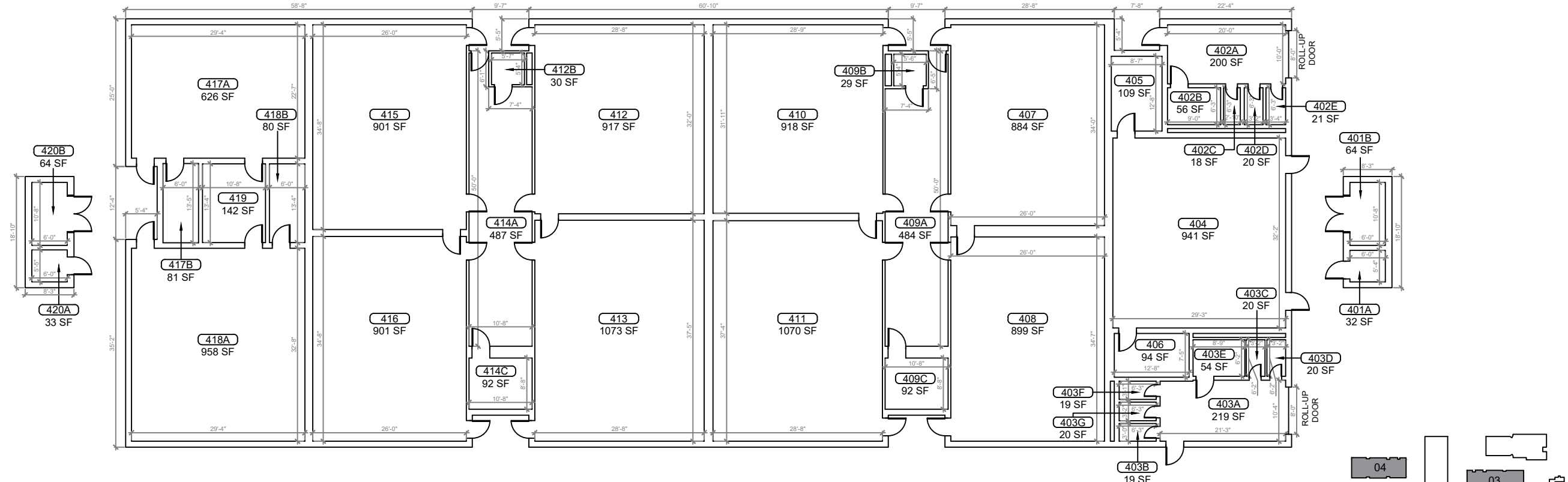
SHEET NUMBER

B-02

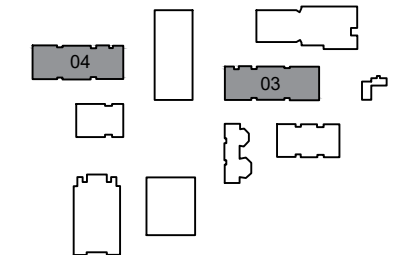
ARCHIS TECHNOLOGIES - \\server-1\H\Archis\21-031 Tavares MS\From ISP\2021-02-25\896_Lake County Fish Survey_MS.dwg February 25, 2021 18:33:14 PC20



1 BUILDING 03 FLOOR PLAN
 B-03 SCALE: 1/8"=1'-0"



2 BUILDING 04 FLOOR PLAN
 B-03 SCALE: 1/8"=1'-0"



KEY PLAN

REV	DATE	DESCRIPTION
A	02/25/21	PRELIMINARY FISH PLAN
B		
0		
1		
2		
3		
4		
5		
6		

ARCHIS PROJECT NO.:
 DRAWN BY: YP
 CHECKED BY: SH



CMI
 158 Terra Mango Loop, Suite B,
 Orlando, FL 32835
 Main: (407) 293-4168

PREPARED BY:
ARCHIS
 350 E. Crown Point Road, Suite 1100
 Winter Garden, FL 34787
 Main: 888.324.2557
 Direct: 407.439.1594

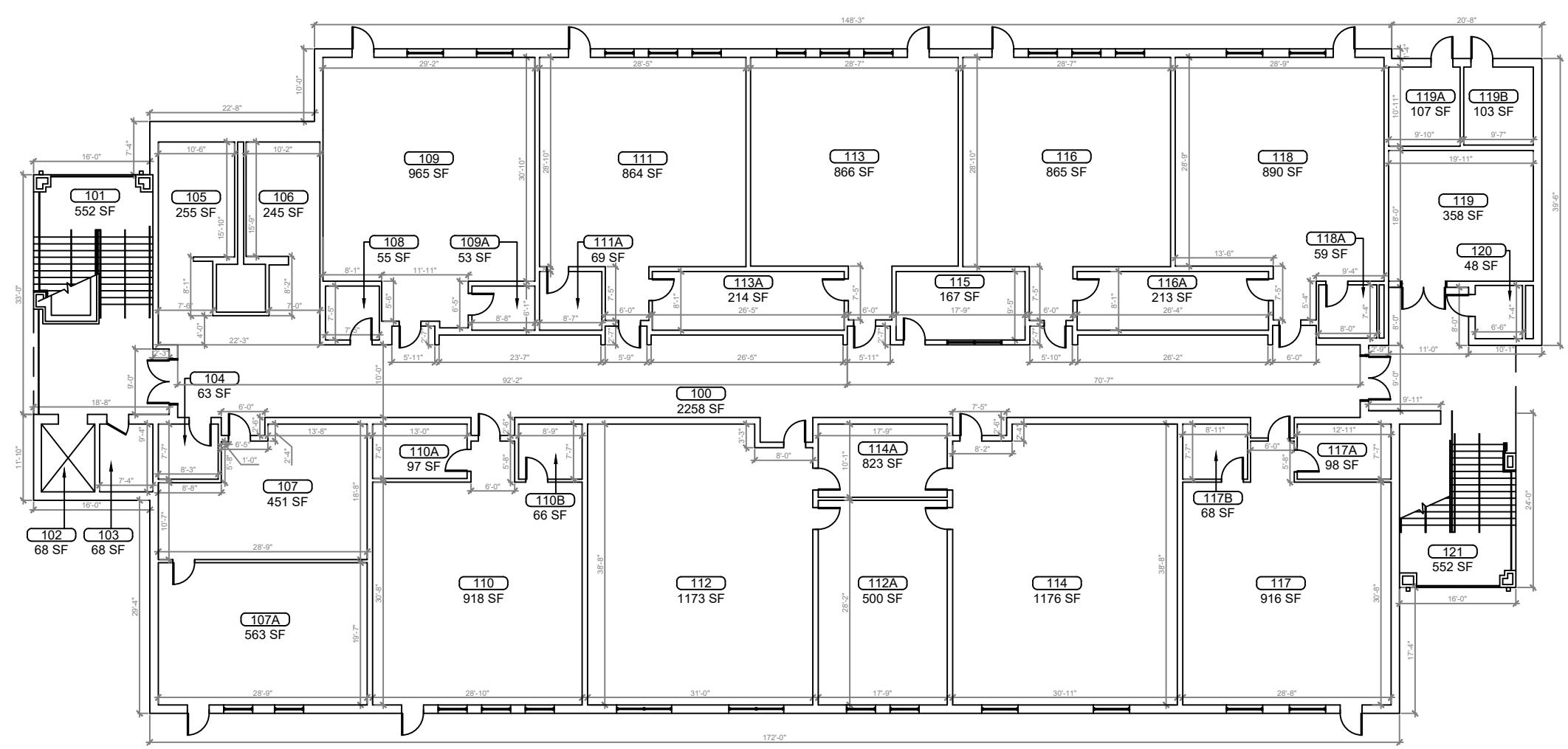
DATE
 , PE
 FL PROFESSIONAL ENGINEER LIC. #

Tavares Middle School (FISH PLAN)
 13032 Lane Park Cutoff Rd, Tavares, FL 32778

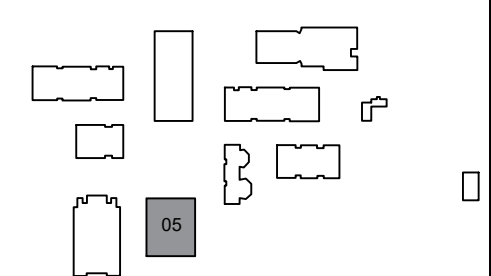
SHEET DESCRIPTION
BUILDING 03 & 04

SHEET NUMBER
B-03

ARCHIS TECHNOLOGIES - \\server-1\H\Archis\21-031 Tavares MS\From ISP\2021-02-25\896_Lake County Fish Survey_Tavares MS.dwg February 25, 2021 18:33:19 PC20



1 BUILDING 05 FIRST FLOOR PLAN
 B-04.1 SCALE: 1/8"=1'-0"



KEY PLAN

REV	DATE	DESCRIPTION
A	02/25/21	PRELIMINARY FISH PLAN
B		
0		
1		
2		
3		
4		
5		
6		

ARCHIS PROJECT NO.:	
DRAWN BY:	CHECKED BY:
YP	SH



CMI
 158 Terra Mango Loop, Suite B,
 Orlando, FL 32835
 Main: (407) 293-4168

PREPARED BY:
ARCHIS
 350 E. Crown Point Road, Suite 1100
 Winter Garden, FL 34787
 Main: 888.324.2557
 Direct: 407.439.1594

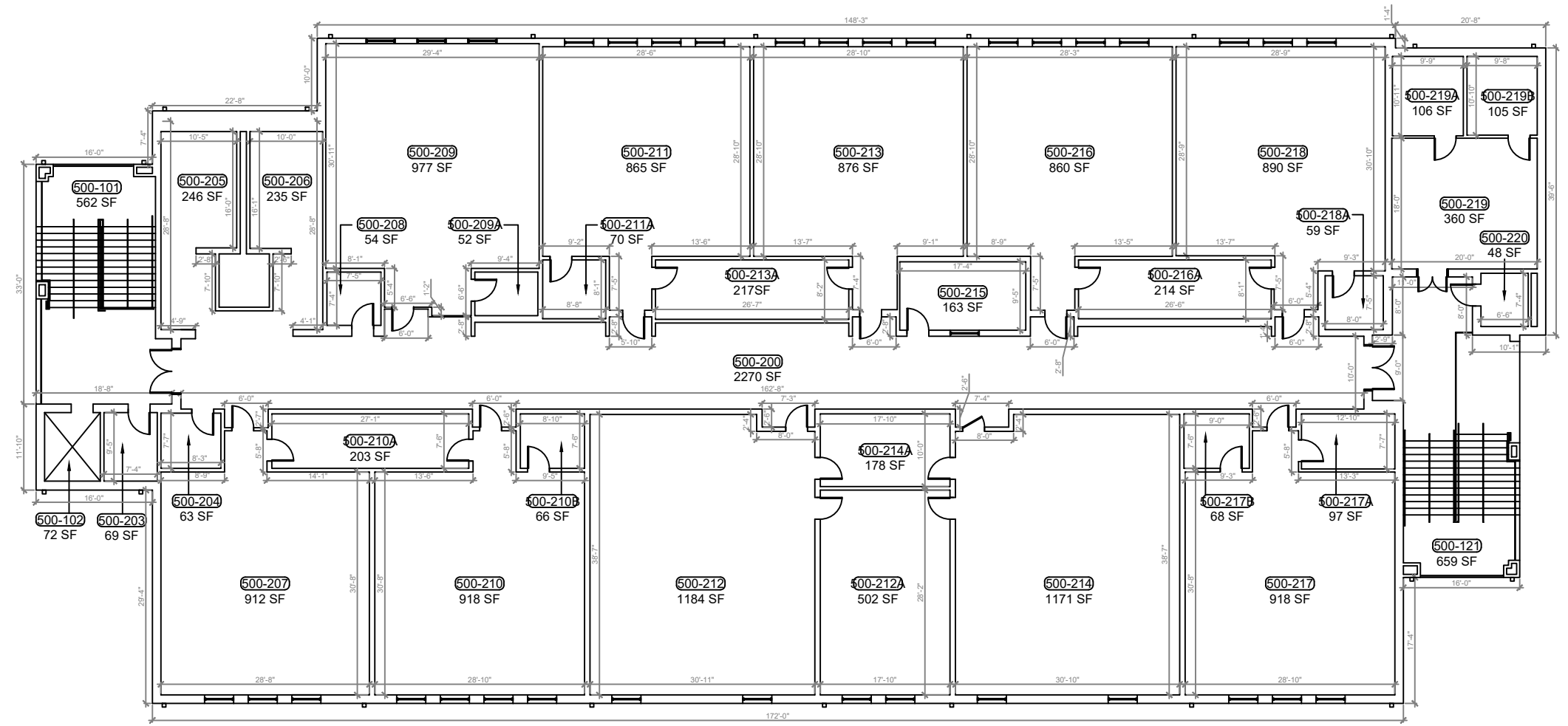
DATE
 , PE
 FL PROFESSIONAL ENGINEER LIC. #

Tavares Middle School
(FISH PLAN)
 13032 Lane Park Cutoff Rd, Tavares, FL 32778

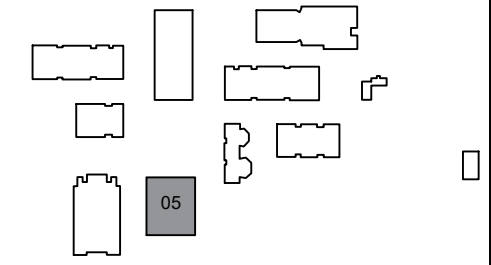
SHEET DESCRIPTION
BUILDING 05

SHEET NUMBER
B-04.1

ARCHIS TECHNOLOGIES - \\server-1\H\Archis\21-031 Tavares MS\From ISP\2021-02-25\896_Lake County Fish Survey_Ms.dwg February 25, 2021 18:33:24 PC20



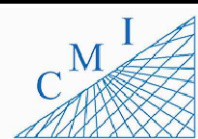
1
B-04.2 **BUILDING 05 SECOND FLOOR PLAN**
 SCALE: 1/8"=1'-0"



KEY PLAN

REV	DATE	DESCRIPTION
A	02/25/21	PRELIMINARY FISH PLAN
B		
0		
1		
2		
3		
4		
5		
6		

ARCHIS PROJECT NO.:	
DRAWN BY:	CHECKED BY:
YP	SH



158 Terra Mango Loop, Suite B,
 Orlando, FL 32835
 Main: (407) 293-4168

PREPARED BY:



350 E. Crown Point Road, Suite 1100
 Winter Garden, FL 34787
 Main: 888.324.2557
 Direct: 407.439.1594

DATE

, PE

FL PROFESSIONAL ENGINEER LIC. #

Tavares Middle School
(FISH PLAN)

13032 Lane Park Cutoff Rd, Tavares, FL 32778

SHEET DESCRIPTION

BUILDING 05

SHEET NUMBER

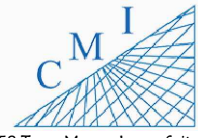
B-04.2

ARCHIS TECHNOLOGIES - \\server-1\H\Archis\21-031 Tavares MS\From ISP\2021-02-25\896_Lake County Fish Survey_Tavares MS.dwg February 25, 2021 18:33:29 PC20



REV	DATE	DESCRIPTION
A	02/25/21	PRELIMINARY FISH PLAN
B		
0		
1		
2		
3		
4		
5		
6		

ARCHIS PROJECT NO.:	
DRAWN BY:	CHECKED BY:
YP	SH

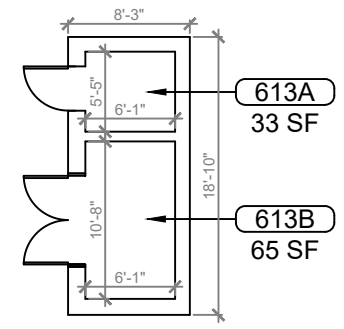
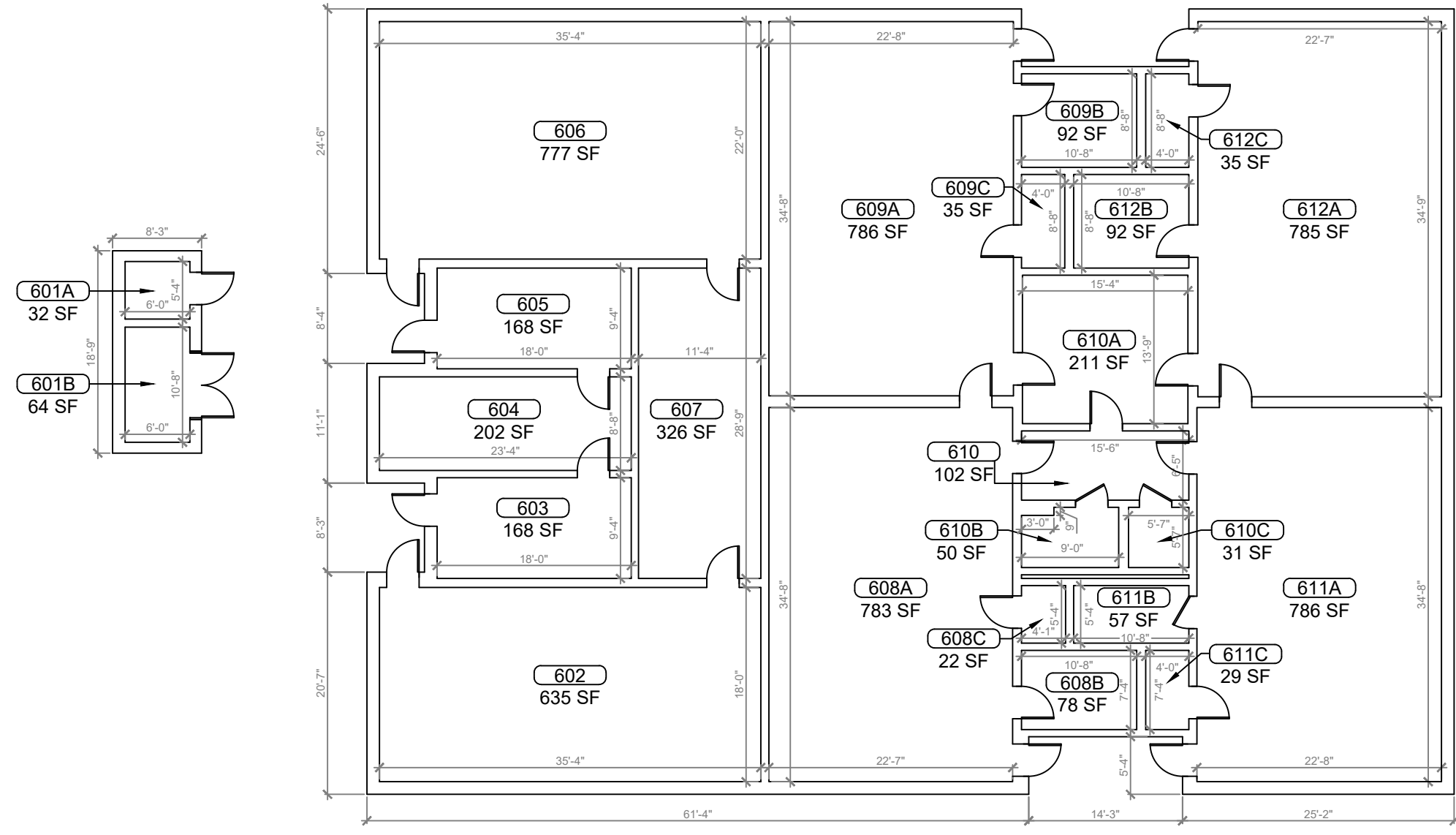


158 Terra Mango Loop, Suite B,
Orlando, FL 32835
Main: (407) 293-4168

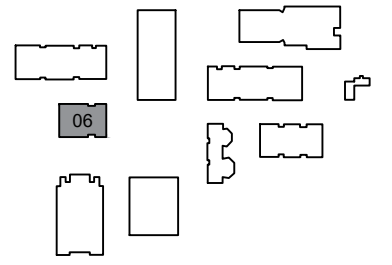
PREPARED BY:



350 E. Crown Point Road, Suite 1100
Winter Garden, FL 34787
Main: 888.324.2557
Direct: 407.439.1594



1 BUILDING 06 FLOOR PLAN
B-05 SCALE: 3/16"=1'-0"



KEY PLAN

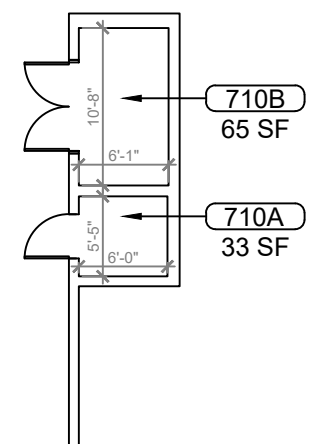
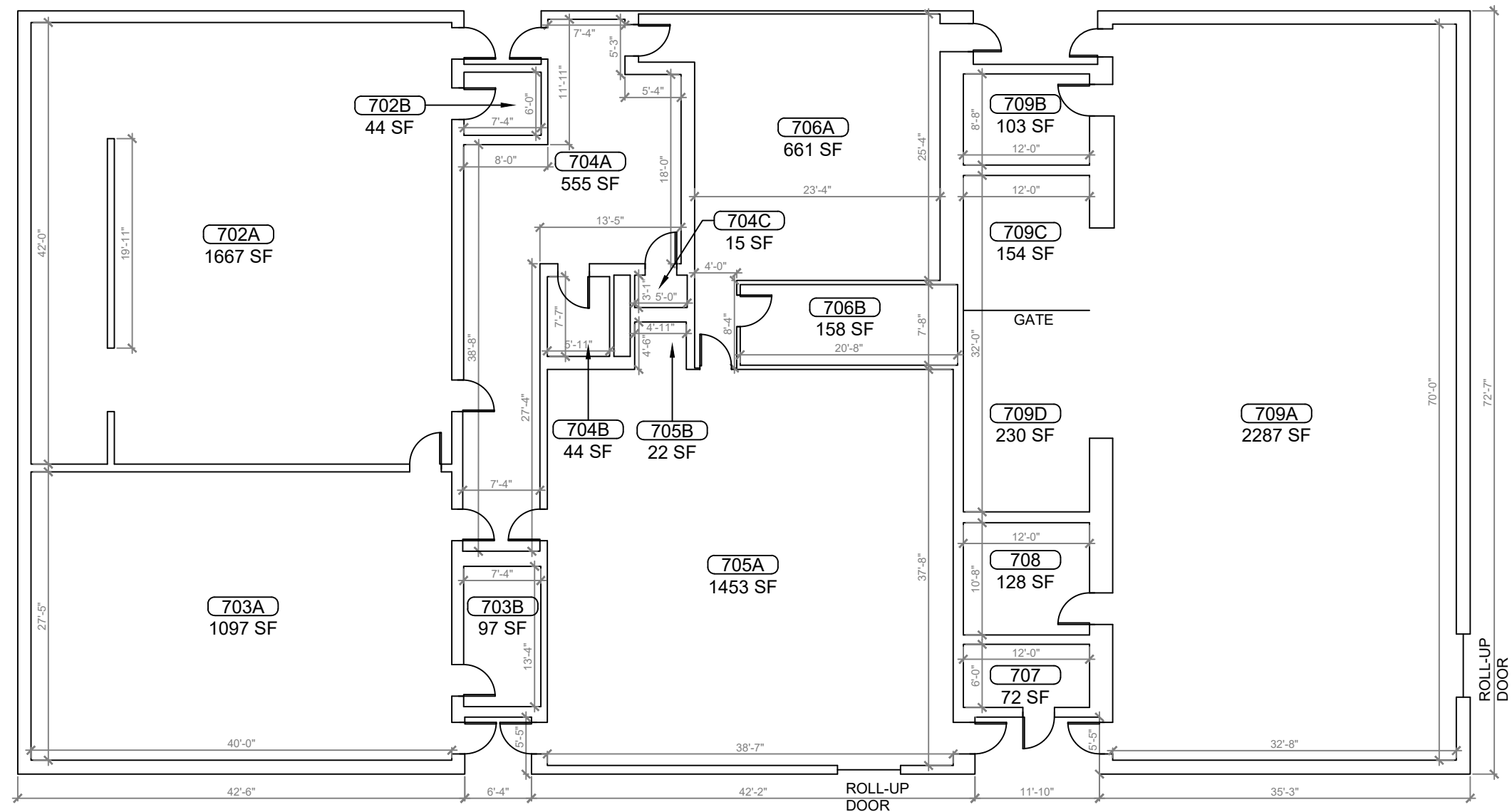
DATE
, PE
FL PROFESSIONAL ENGINEER LIC. #

Tavares Middle School
(FISH PLAN)
13032 Lane Park Cutoff Rd, Tavares, FL 32778

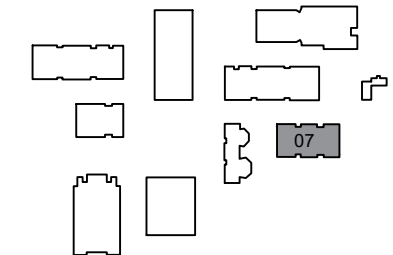
SHEET DESCRIPTION
BUILDING 06

SHEET NUMBER
B-05

ARCHIS TECHNOLOGIES - \\server-1\H\Archis\21-031 Tavares MS\From ISP\2021-02-25\896_Lake County Fish Survey_MS.dwg February 25, 2021 18:33:34 PC20



1 BUILDING 07 FLOOR PLAN
B-06 SCALE: 3/16"=1'-0"



KEY PLAN

REV	DATE	DESCRIPTION
A	02/25/21	PRELIMINARY FISH PLAN
B		
0		
1		
2		
3		
4		
5		
6		

ARCHIS PROJECT NO.:	
DRAWN BY:	CHECKED BY:
YP	SH



CMI
158 Terra Mango Loop, Suite B,
Orlando, FL 32835
Main: (407) 293-4168

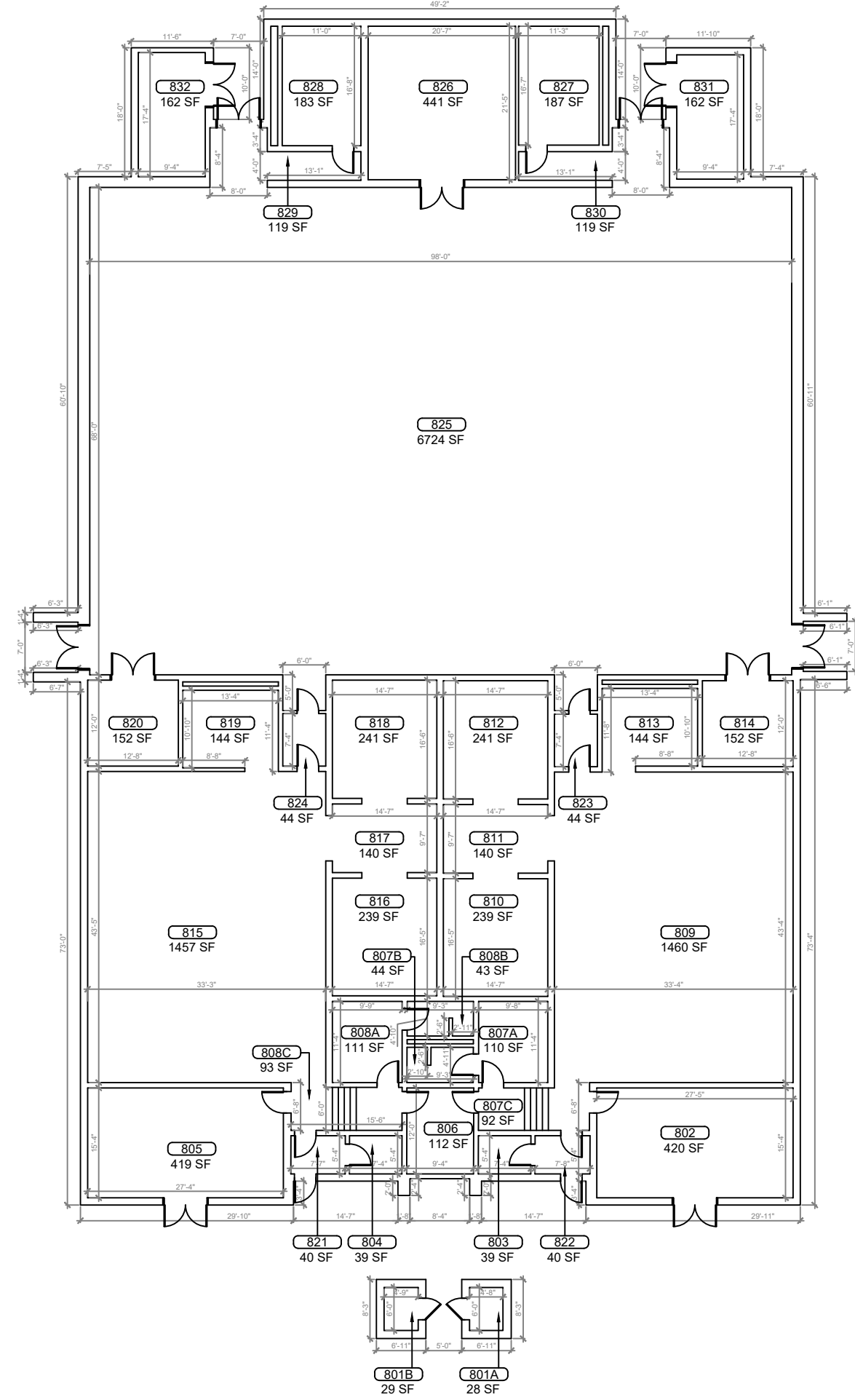
PREPARED BY:
ARCHIS
350 E. Crown Point Road, Suite 1100
Winter Garden, FL 34787
Main: 888.324.2557
Direct: 407.439.1594

DATE
, PE
FL PROFESSIONAL ENGINEER LIC. #

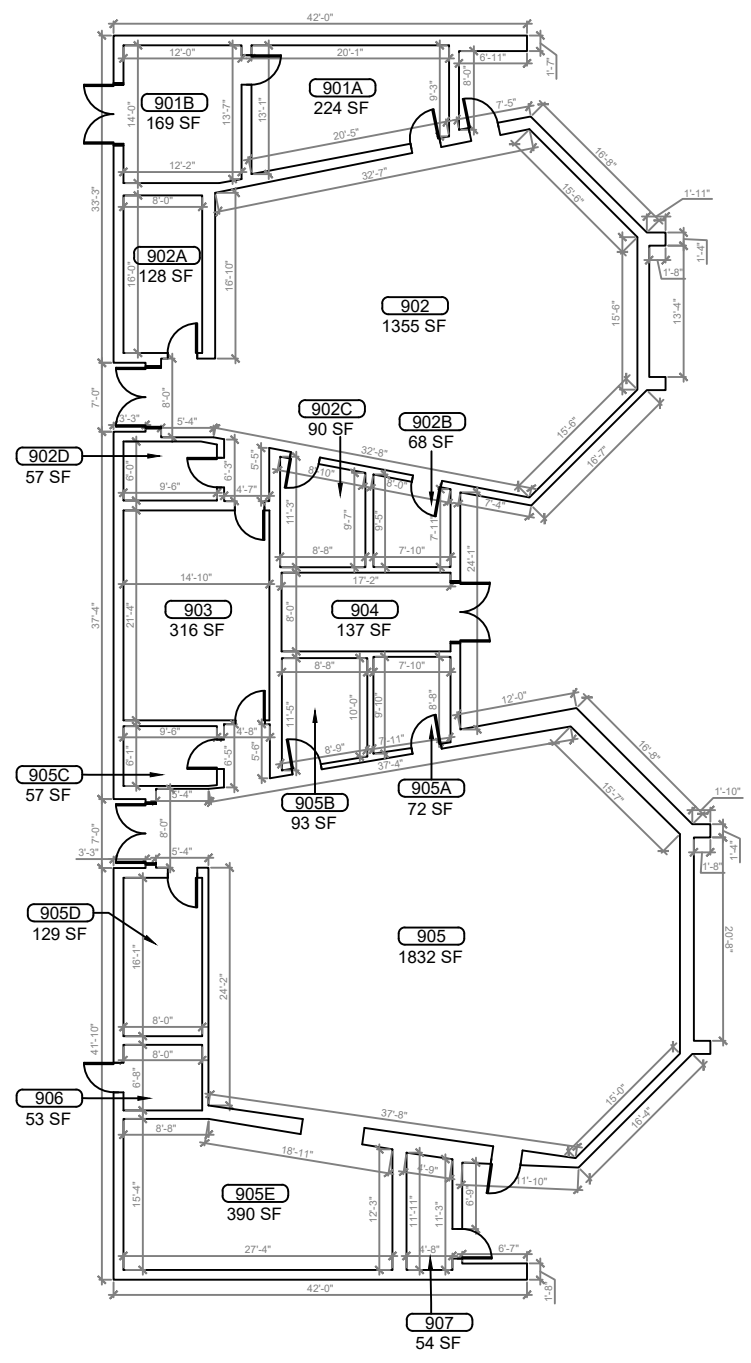
Tavares Middle School
(FISH PLAN)
13032 Lane Park Cutoff
Rd, Tavares, FL 32778
SHEET DESCRIPTION
BUILDING 07

SHEET NUMBER
B-06

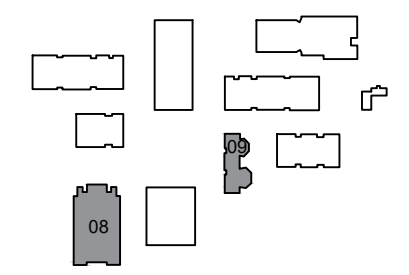
ARCHIS TECHNOLOGIES - \\server-1\H\Archis\21-031 Tavares MS\From ISP\2021-02-25\896_Lake County Fish Survey_Ms.dwg February 25, 2021 18:33:39 PC20



1 BUILDING 08 FLOOR PLAN
B-07 SCALE: 1/8"=1'-0"



2 BUILDING 09 FLOOR PLAN
B-07 SCALE: 1/8"=1'-0"

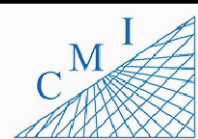


KEY PLAN



REV	DATE	DESCRIPTION
A	02/25/21	PRELIMINARY FISH PLAN
B		
0		
1		
2		
3		
4		
5		
6		

ARCHIS PROJECT NO.:	
DRAWN BY:	CHECKED BY:
YP	SH



158 Terra Mango Loop, Suite B,
Orlando, FL 32835
Main: (407) 293-4168

PREPARED BY:



350 E. Crown Point Road, Suite 1100
Winter Garden, FL 34787
Main: 888.324.2557
Direct: 407.439.1594

DATE

, PE

FL PROFESSIONAL ENGINEER LIC. #

Tavares Middle School (FISH PLAN)

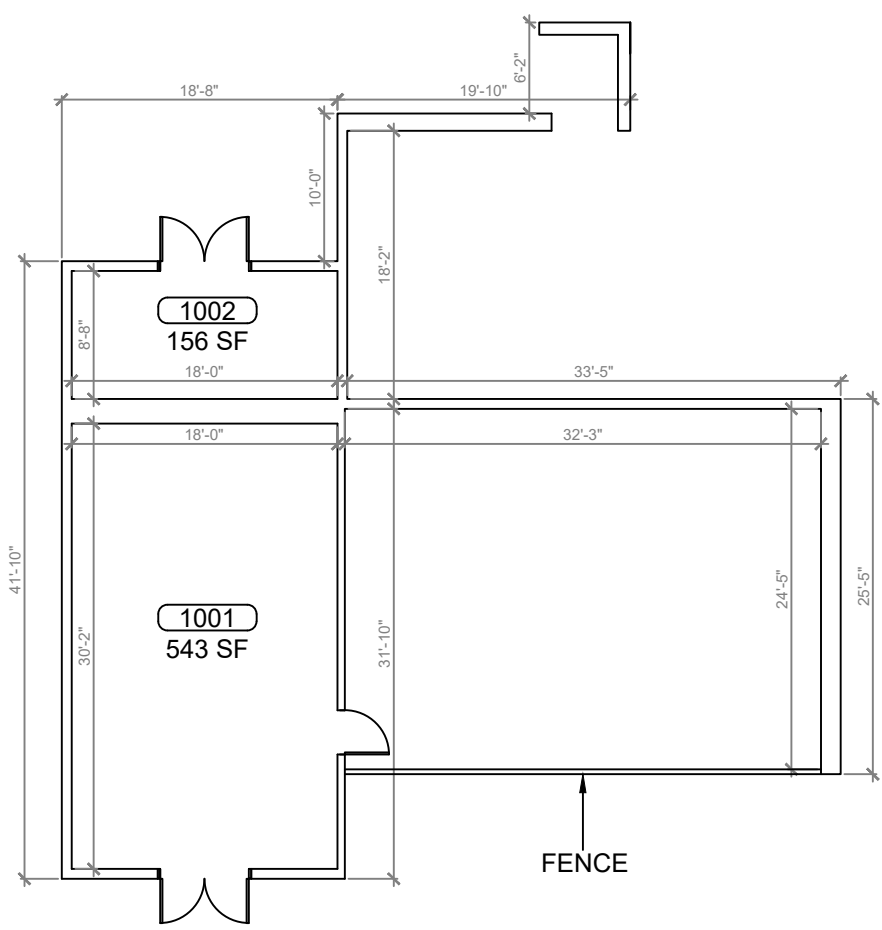
13032 Lane Park Cutoff Rd, Tavares, FL 32778

SHEET DESCRIPTION
BUILDING 08 & 09

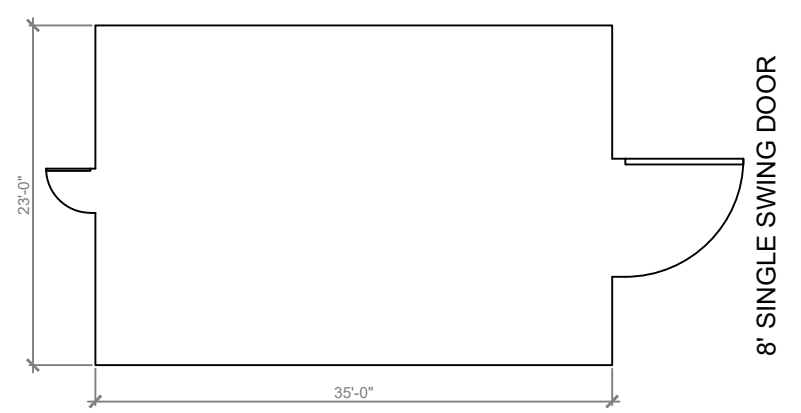
SHEET NUMBER

B-07

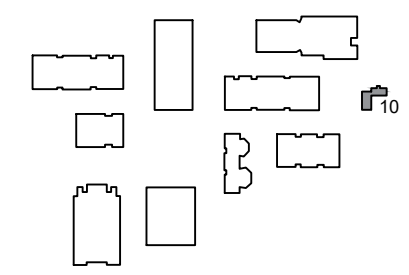
ARCHIS TECHNOLOGIES - \\server-1\H\Archis\21-031 Tavares MS\From ISP\2021-02-25\896_Lake County Fish Survey_MS.dwg February 25, 2021 18:33:44 PC20



1
B-08 **BUILDING 10 FLOOR PLAN**
SCALE: 3/16"=1'-0"



2
B-08 **BUILDING GREENHOUSE**
SCALE: 3/16"=1'-0"



KEY PLAN



REV	DATE	DESCRIPTION
A	02/25/21	PRELIMINARY FISH PLAN
B		
0		
1		
2		
3		
4		
5		
6		

ARCHIS PROJECT NO.:

DRAWN BY:	CHECKED BY:
YP	SH



PREPARED BY:

ARCHIS

350 E. Crown Point Road, Suite 1100
Winter Garden, FL 34787
Main: 888.324.2557
Direct: 407.439.1594

DATE
, PE
FL PROFESSIONAL ENGINEER LIC. #

Tavares Middle School
(FISH PLAN)
13032 Lane Park Cutoff Rd, Tavares, FL 32778

SHEET DESCRIPTION
BUILDING 10, GH

SHEET NUMBER
B-08