

ARCHIS TECHNOLOGIES - \\server-1\H\Archis\21-018 Tavares HS\From ISP\2021-02-15\896_Lake County_Fish Survey_Tavares_HS.dwg February 15, 2021 20:41:43 PC20

TAVARES HIGH SCHOOL



1 **AERIAL VIEW**
 SP-01 SCALE: N.T.S.

INDEX OF DRAWINGS	
SHT. NO.	DESCRIPTION
SP-01	AERIAL
SP-02	SITE PLAN
B-01	BUILDING 01
B-02.1	BUILDING 02 FIRST FLOOR
B-02.2	BUILDING 02 SECOND FLOOR
B-03	BUILDING 03
B-04	BUILDING 04
B-05	BUILDING 05
B-06.1	BUILDING 06 FIRST FLOOR
B-06.2	BUILDING 06 SECOND FLOOR
B-07	BUILDING 07
B-08	BUILDING 08
B-09	BUILDING 09
B-10	BUILDING 20, 24, 80 & TB

REV	DATE	DESCRIPTION
A	02/11/21	PRELIMINARY FISH PLAN
B		
0		
1		
2		
3		
4		
5		
6		

ARCHIS PROJECT NO.:
 DRAWN BY: VP CHECKED BY: SH



C M I
 158 Terra Mango Loop, Suite B,
 Orlando, FL 32835
 Main: (407) 293-4168

PREPARED BY:
ARCHIS
 350 E. Crown Point Road, Suite 1100
 Winter Garden, FL 34787
 Main: 888.324.2557
 Direct: 407.439.1594

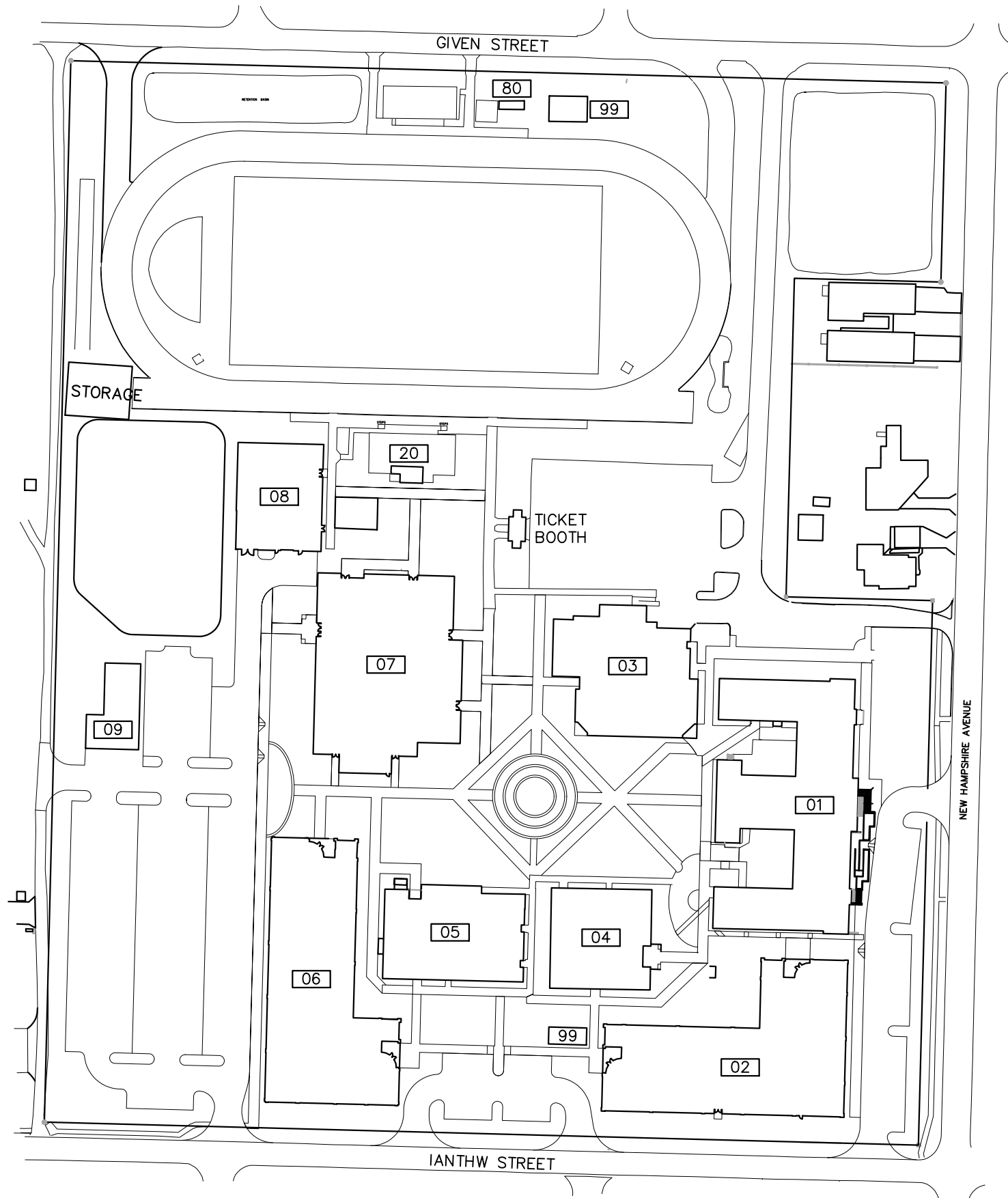
DATE _____
 _____, PE
 FL PROFESSIONAL ENGINEER LIC. # _____

Tavares High School
(FISH PLAN)
 603 N New Hampshire
 Ave, Tavares, FL

SHEET DESCRIPTION
AERIAL VIEW

SHEET NUMBER
SP-01

ARCHIS TECHNOLOGIES - \\server-1\H\Archis\21-018 Tavares HS\From ISP\2021-02-15\896_Lake County_Fish Survey_Tavares_HS.dwg February 15, 2021 20:41:53 PC20



LEGEND

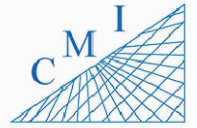
- 01-ADMINISTRATION/AUDITORIUM
- 02-DINING/CLASSROOM
- 03-CAFETERIA
- 04-MEDIA CENTER
- 05-MEDIA/CLASSROOM/ESE
- 06-CLASSROOM/SCIENCE LAB
- 07-GYMNASIUM
- 08-AGRICULTURE
- 09-LOCKER ROOM
- 20-CONCESSIONS
- 80-RESTROOMS
- 99-PORTABLES

1 **OVERALL SITE PLAN**
SP-02 SCALE: 1:64



REV	DATE	DESCRIPTION
A	02/11/21	PRELIMINARY FISH PLAN
B		
0		
1		
2		
3		
4		
5		
6		

ARCHIS PROJECT NO.:
DRAWN BY: VP CHECKED BY: SH



158 Terra Mango Loop, Suite B,
Orlando, FL 32835
Main: (407) 293-4168

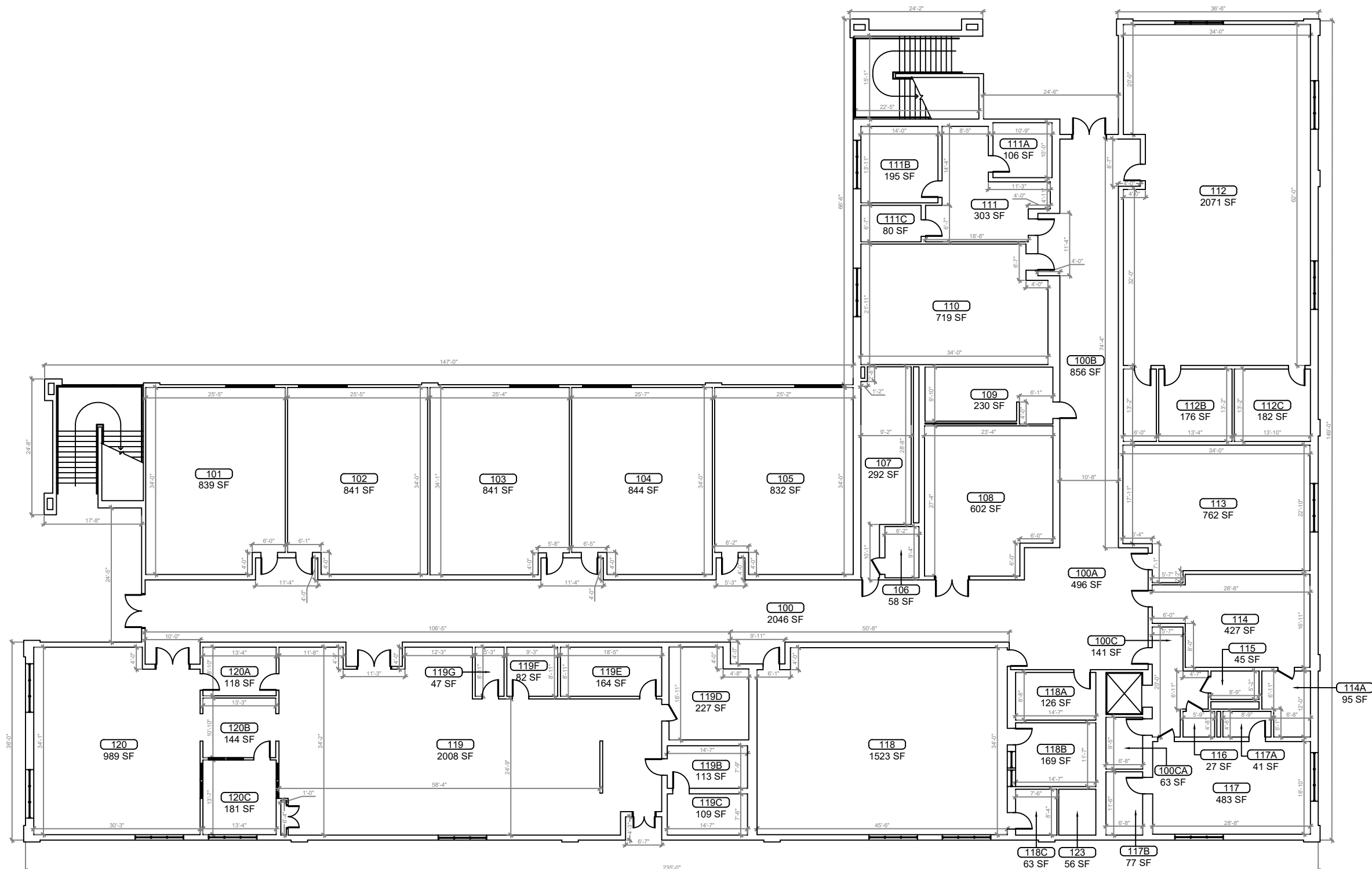
PREPARED BY:
ARCHIS
350 E. Crown Point Road, Suite 1100
Winter Garden, FL 34787
Main: 888.324.2557
Direct: 407.439.1594

DATE
, PE
FL PROFESSIONAL ENGINEER LIC. #

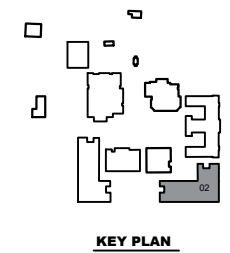
Tavares High School
(FISH PLAN)
603 N New Hampshire
Ave, Tavares, FL

SHEET DESCRIPTION
OVERALL SITE PLAN

SHEET NUMBER
SP-02



1
BUILDING 02 FIRST FLOOR PLAN
 SCALE: 1/8"=1'-0"



REV	DATE	DESCRIPTION
A	02/11/21	PRELIMINARY FISH PLAN
B		
0		
1		
2		
3		
4		
5		
6		

ARCHIS PROJECT NO.:
 DRAWN BY: VP
 CHECKED BY: SH



CM I
 158 Terra Mango Loop, Suite B,
 Orlando, FL 32835
 Main: (407) 293-4168

PREPARED BY:
ARCHIS
 350 E. Crown Point Road, Suite 1100
 Winter Garden, FL 34787
 Main: 888.324.2557
 Direct: 407.439.1594

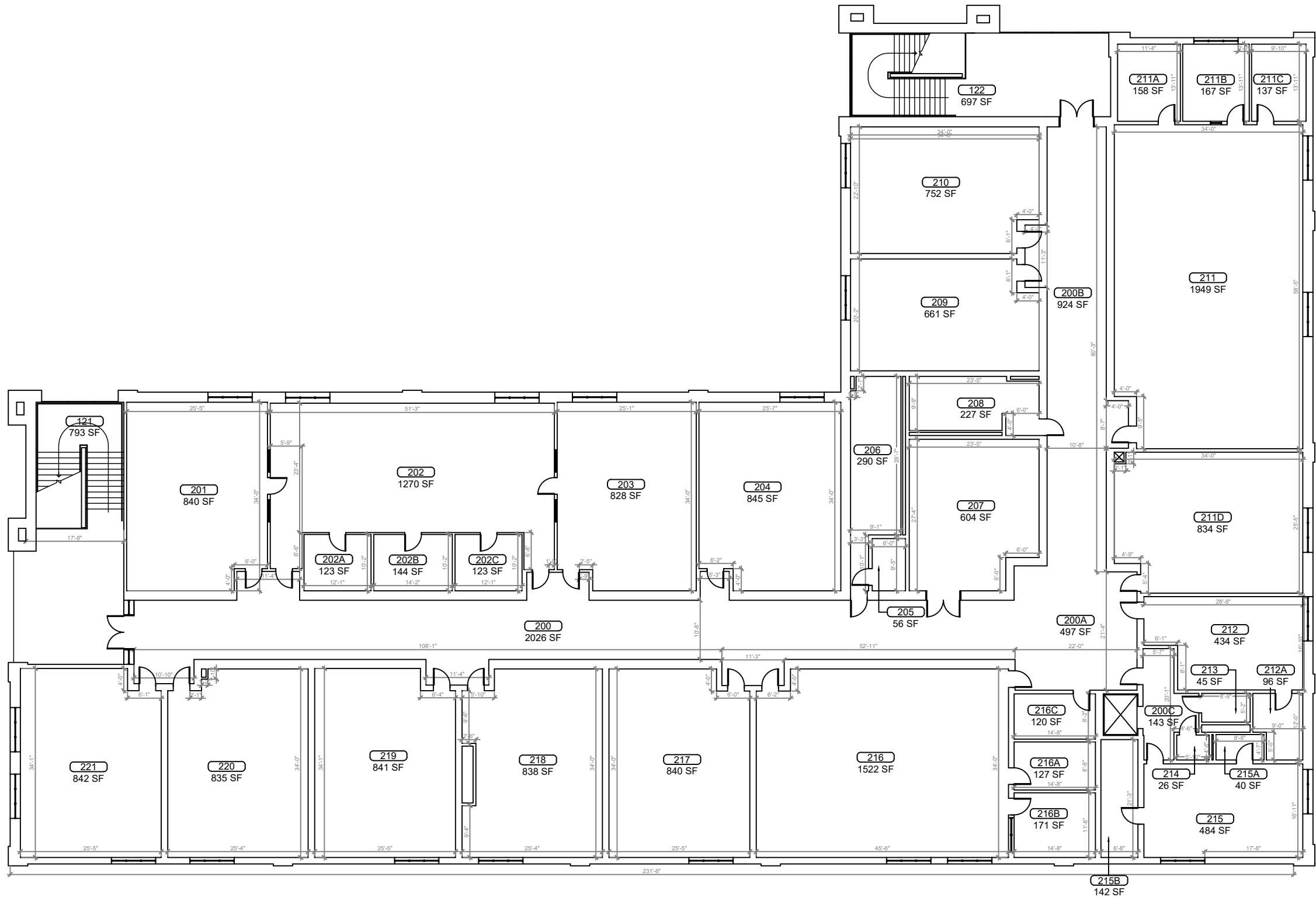
DATE _____
 , PE
 FL PROFESSIONAL ENGINEER LIC. # _____

Tavares High School
(FISH PLAN)
 603 N New Hampshire
 Ave, Tavares, FL

SHEET DESCRIPTION
BUILDING 02

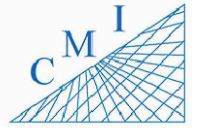
SHEET NUMBER
B-02.1

ARCHIS TECHNOLOGIES - \\server-1\H\Archis\21-018 Tavares HS\From ISP\2021-02-15\896_Lake County_Fish Survey_Tavares_HS.dwg February 15, 2021 20:42:06 PC20



REV	DATE	DESCRIPTION
A	02/11/21	PRELIMINARY FISH PLAN
B		
0		
1		
2		
3		
4		
5		
6		

ARCHIS PROJECT NO.:
 DRAWN BY: VP
 CHECKED BY: SH



158 Terra Mango Loop, Suite B,
 Orlando, FL 32835
 Main: (407) 293-4168

PREPARED BY:
ARCHIS
 350 E. Crown Point Road, Suite 1100
 Winter Garden, FL 34787
 Main: 888.324.2557
 Direct: 407.439.1594

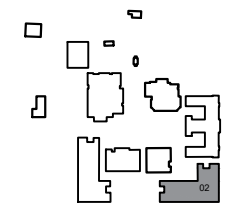
DATE _____
 , PE
 FL PROFESSIONAL ENGINEER LIC. # _____

Tavares High School
(FISH PLAN)
 603 N New Hampshire
 Ave, Tavares, FL

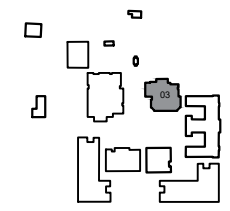
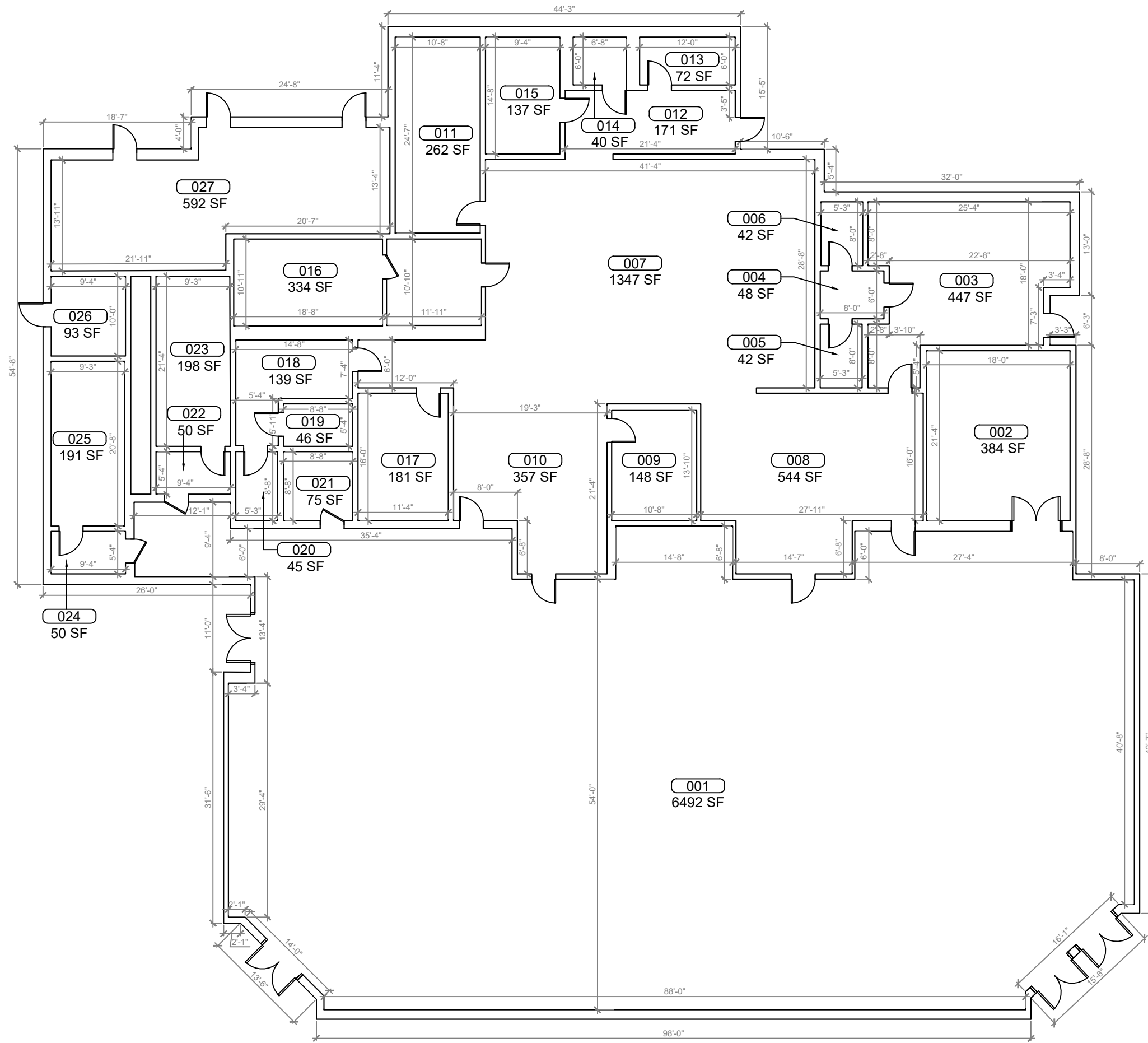
SHEET DESCRIPTION
BUILDING 02

SHEET NUMBER
B-02.2

1
BUILDING 02 SECOND FLOOR PLAN
 SCALE: 1/8"=1'-0"



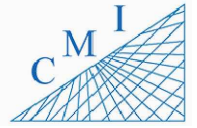
KEY PLAN



1
B-03 **BUILDING 03 FLOOR PLAN**
SCALE: 3/16"=1'-0"

REV	DATE	DESCRIPTION
A	02/11/21	PRELIMINARY FISH PLAN
B		
0		
1		
2		
3		
4		
5		
6		

ARCHIS PROJECT NO.:
DRAWN BY: VP CHECKED BY: SH



158 Terra Mango Loop, Suite B,
Orlando, FL 32835
Main: (407) 293-4168

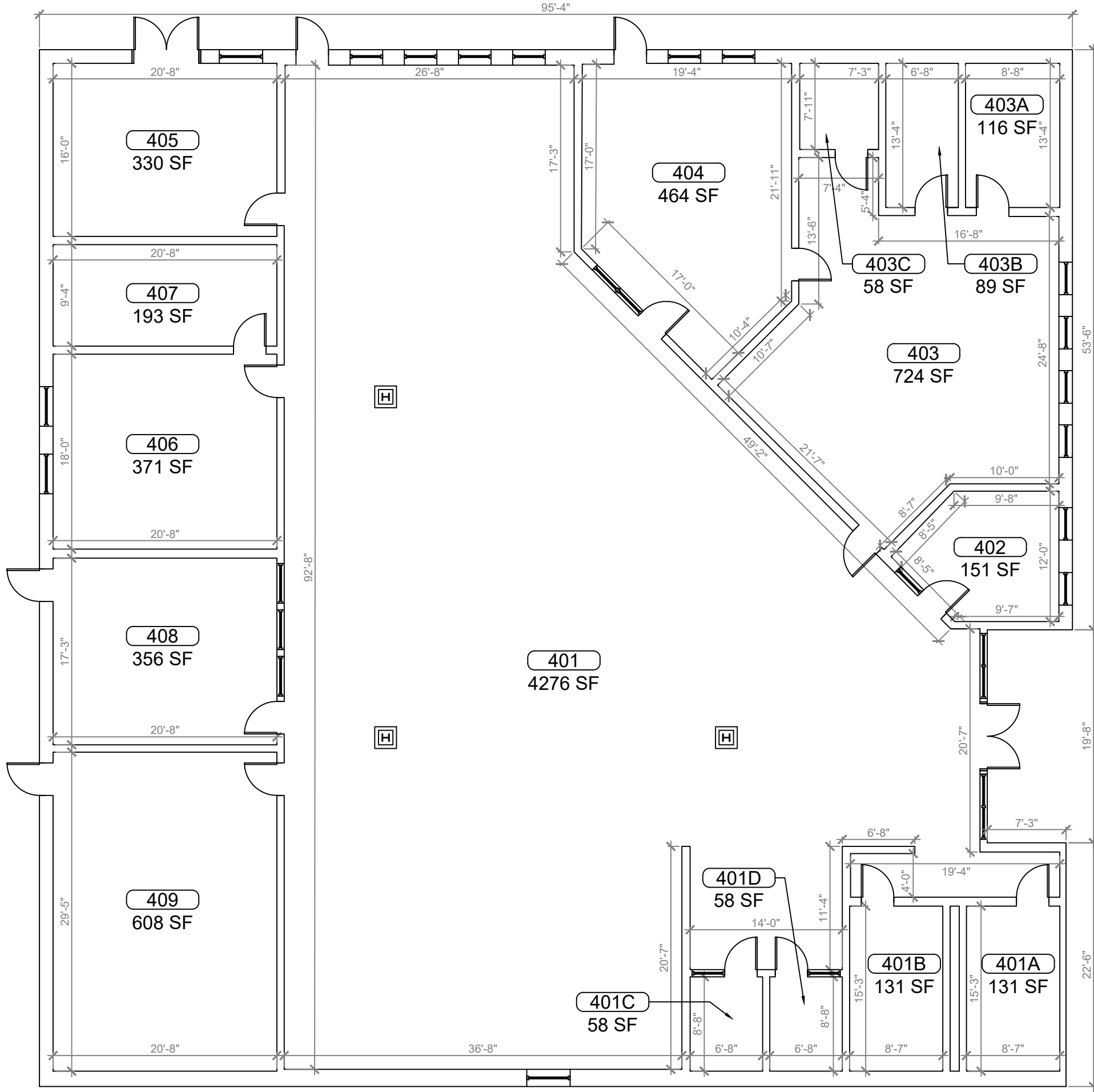
PREPARED BY:
ARCHIS
350 E. Crown Point Road, Suite 1100
Winter Garden, FL 34787
Main: 888.324.2557
Direct: 407.439.1594

DATE
, PE
FL PROFESSIONAL ENGINEER LIC. #

Tavares High School
(FISH PLAN)
603 N New Hampshire
Ave, Tavares, FL

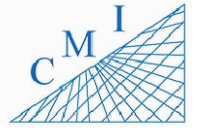
SHEET DESCRIPTION
BUILDING 03

SHEET NUMBER
B-03



REV	DATE	DESCRIPTION
A	02/11/21	PRELIMINARY FISH PLAN
B		
0		
1		
2		
3		
4		
5		
6		

ARCHIS PROJECT NO.:
 DRAWN BY: VP
 CHECKED BY: SH



158 Terra Mango Loop, Suite B,
 Orlando, FL 32835
 Main: (407) 293-4168

PREPARED BY:
ARCHIS
 350 E. Crown Point Road, Suite 1100
 Winter Garden, FL 34787
 Main: 888.324.2557
 Direct: 407.439.1594

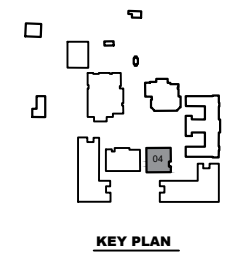
DATE _____
 _____, PE
 FL PROFESSIONAL ENGINEER LIC. # _____

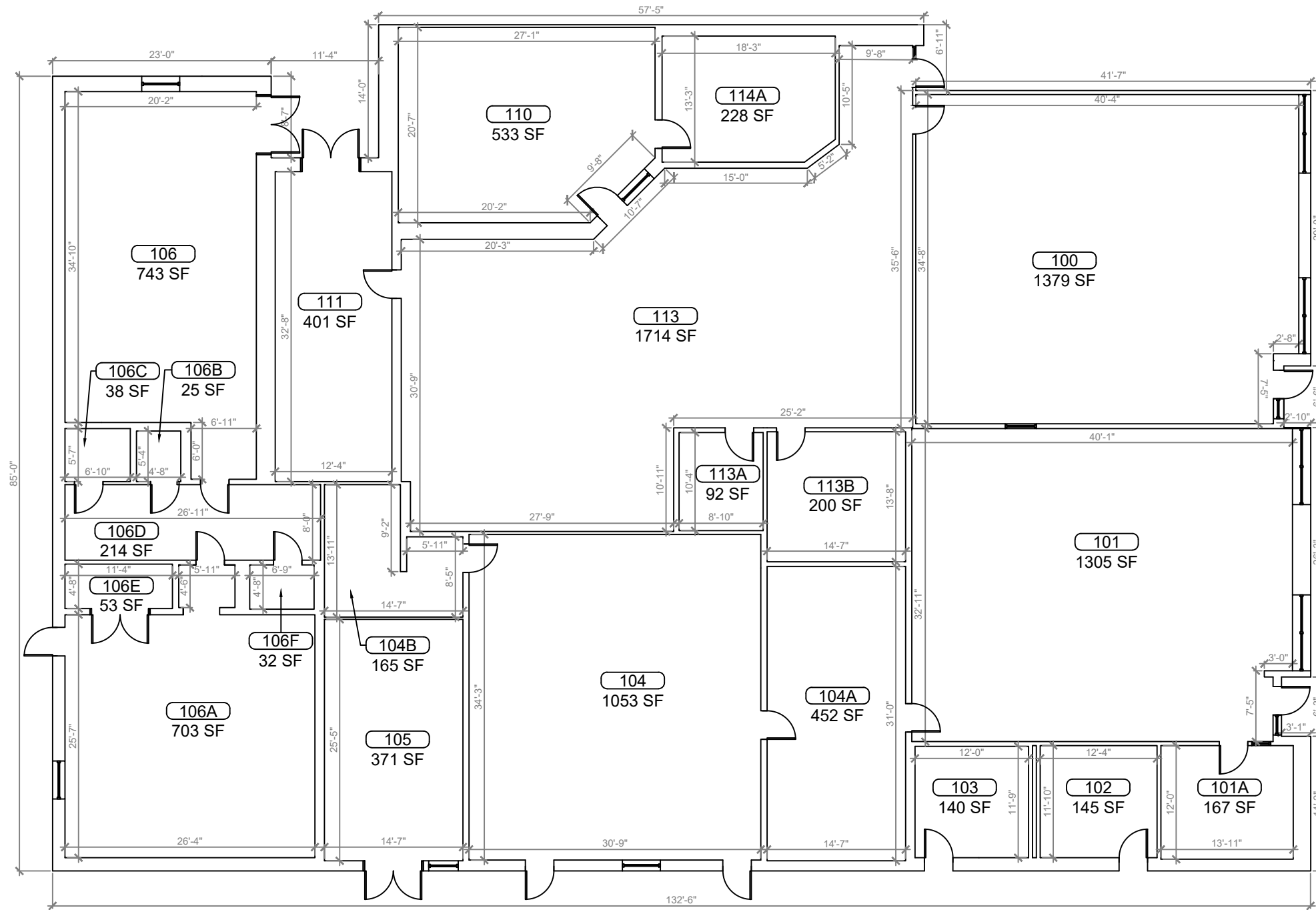
Tavares High School
(FISH PLAN)
 603 N New Hampshire Ave, Tavares, FL

SHEET DESCRIPTION
BUILDING 04

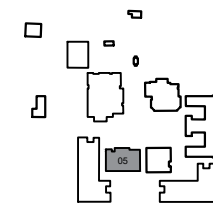
SHEET NUMBER
B-04

1 BUILDING 04 FLOOR PLAN
 B-04 SCALE: 1/4"=1'-0"



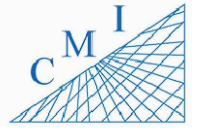


1
B-05 **BUILDING 05 FLOOR PLAN**
SCALE: 3/16"=1'-0"



REV	DATE	DESCRIPTION
A	02/11/21	PRELIMINARY FISH PLAN
B		
0		
1		
2		
3		
4		
5		
6		

ARCHIS PROJECT NO.:
DRAWN BY: VP CHECKED BY: SH



158 Terra Mango Loop, Suite B,
Orlando, FL 32835
Main: (407) 293-4168

PREPARED BY:
ARCHIS
350 E. Crown Point Road, Suite 1100
Winter Garden, FL 34787
Main: 888.324.2557
Direct: 407.439.1594

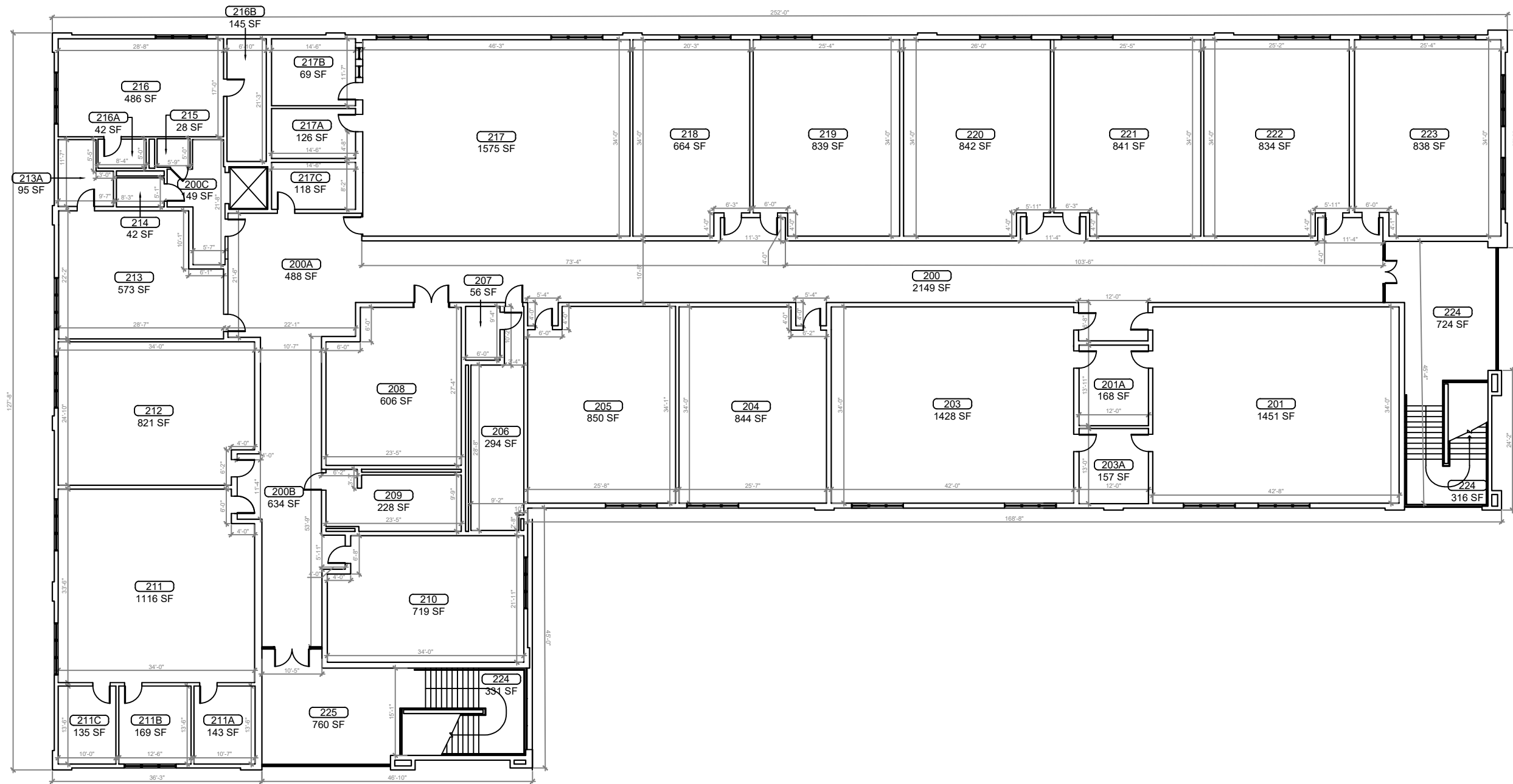
DATE
, PE
FL PROFESSIONAL ENGINEER LIC. #

Tavares High School
(FISH PLAN)
603 N New Hampshire
Ave, Tavares, FL

SHEET DESCRIPTION
BUILDING 05

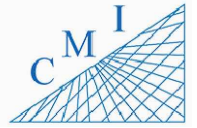
SHEET NUMBER
B-05

ARCHIS TECHNOLOGIES - \\server-1\H\Archis\21-018 Tavares HS\From ISP\2021-02-15\896_Lake County_Fish Survey_Tavares HS.dwg February 15, 2021 20:42:31 PC20



REV	DATE	DESCRIPTION
A	02/11/21	PRELIMINARY FISH PLAN
B		
0		
1		
2		
3		
4		
5		
6		

ARCHIS PROJECT NO.:
 DRAWN BY: VP
 CHECKED BY: SH



158 Terra Mango Loop, Suite B,
 Orlando, FL 32835
 Main: (407) 293-4168

PREPARED BY:
ARCHIS
 350 E. Crown Point Road, Suite 1100
 Winter Garden, FL 34787
 Main: 888.324.2557
 Direct: 407.439.1594

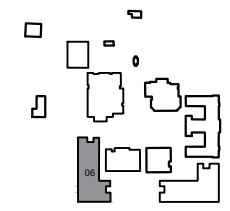
DATE _____
 _____, PE
 FL PROFESSIONAL ENGINEER LIC. # _____

Tavares High School
(FISH PLAN)
 603 N New Hampshire
 Ave, Tavares, FL

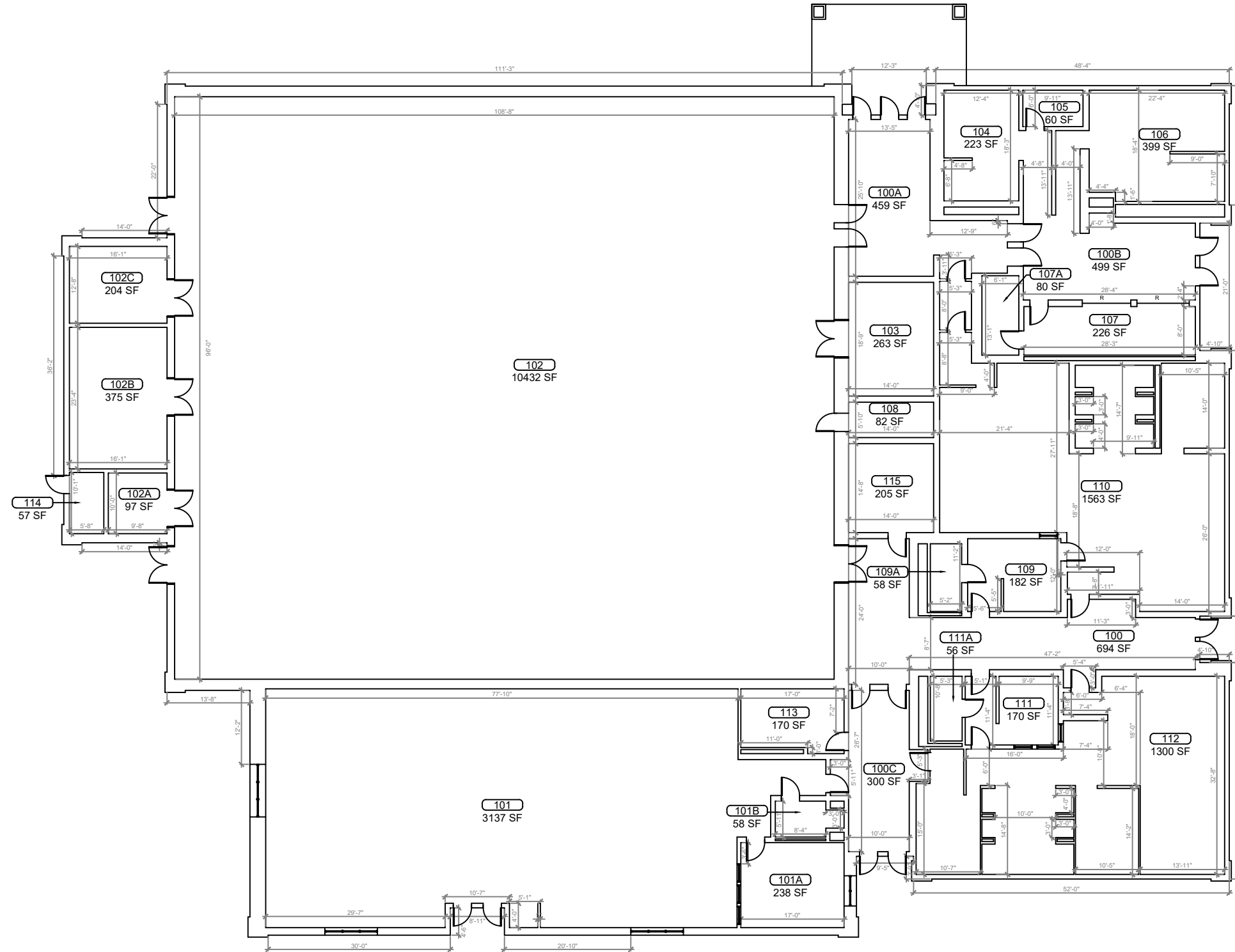
SHEET DESCRIPTION
BUILDING 06

SHEET NUMBER
B-06.2

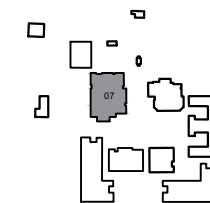
1
B-06.2
BUILDING 06 SECOND FLOOR PLAN
 SCALE: 1/8"=1'-0"



KEY PLAN



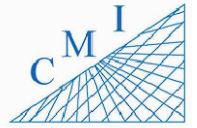
1
B-07 **BUILDING 07 FLOOR PLAN**
SCALE: 1/8"=1'-0"



KEY PLAN

REV	DATE	DESCRIPTION
A	02/11/21	PRELIMINARY FISH PLAN
B		
0		
1		
2		
3		
4		
5		
6		

ARCHIS PROJECT NO.:
DRAWN BY: VP CHECKED BY: SH



158 Terra Mango Loop, Suite B,
Orlando, FL 32835
Main: (407) 293-4168

PREPARED BY:



350 E. Crown Point Road, Suite 1100
Winter Garden, FL 34787
Main: 888.324.2557
Direct: 407.439.1594

DATE

, PE
FL PROFESSIONAL ENGINEER LIC. #

Tavares High School

(FISH PLAN)

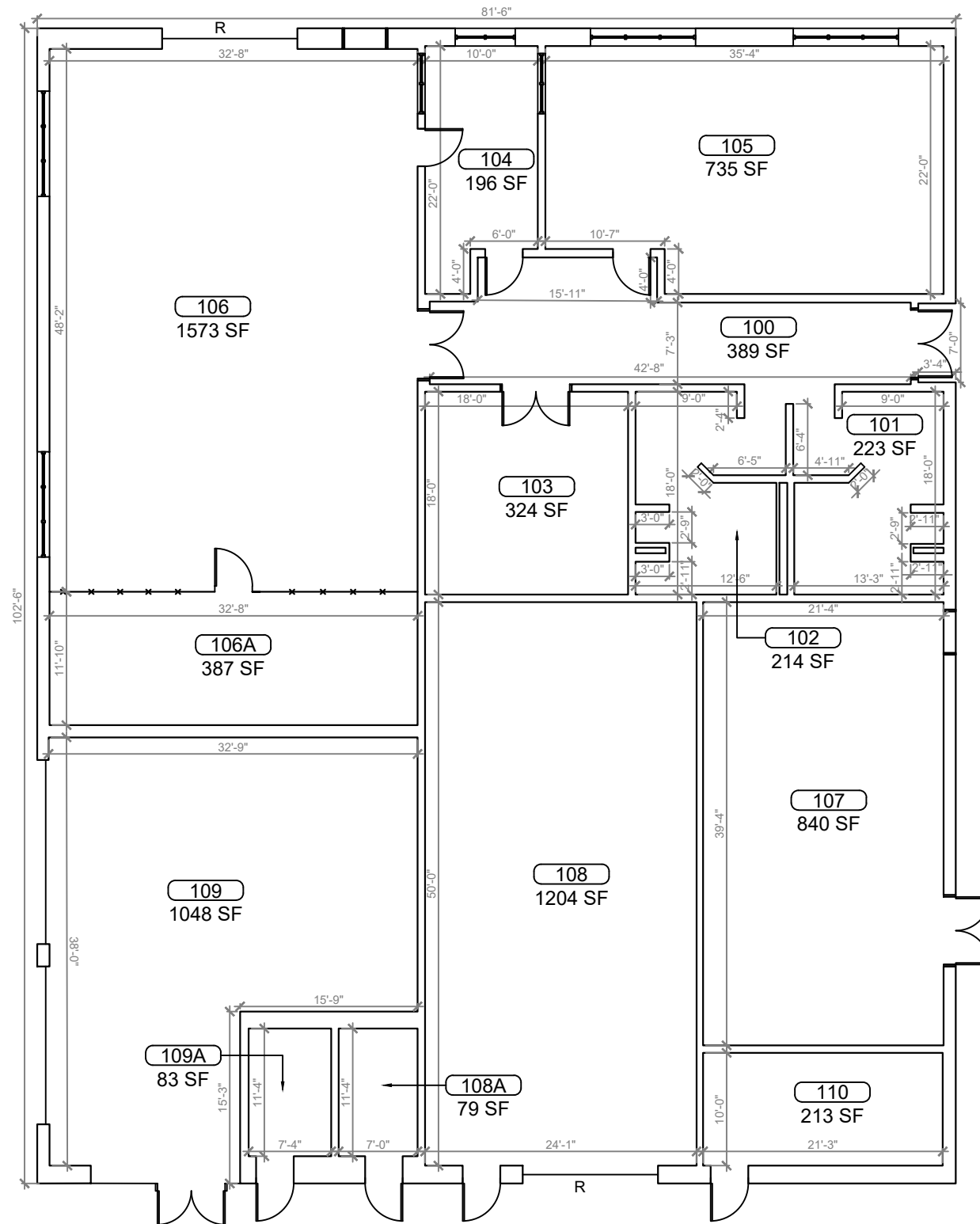
603 N New Hampshire
Ave, Tavares, FL

SHEET DESCRIPTION

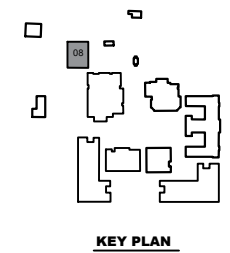
BUILDING 07

SHEET NUMBER

B-07



1
B-08 **BUILDING 08 FLOOR PLAN**
SCALE: 3/16"=1'-0"



REV	DATE	DESCRIPTION
A	02/11/21	PRELIMINARY FISH PLAN
B		
0		
1		
2		
3		
4		
5		
6		

ARCHIS PROJECT NO.:
DRAWN BY: VP CHECKED BY: SH



CM I
158 Terra Mango Loop, Suite B,
Orlando, FL 32835
Main: (407) 293-4168

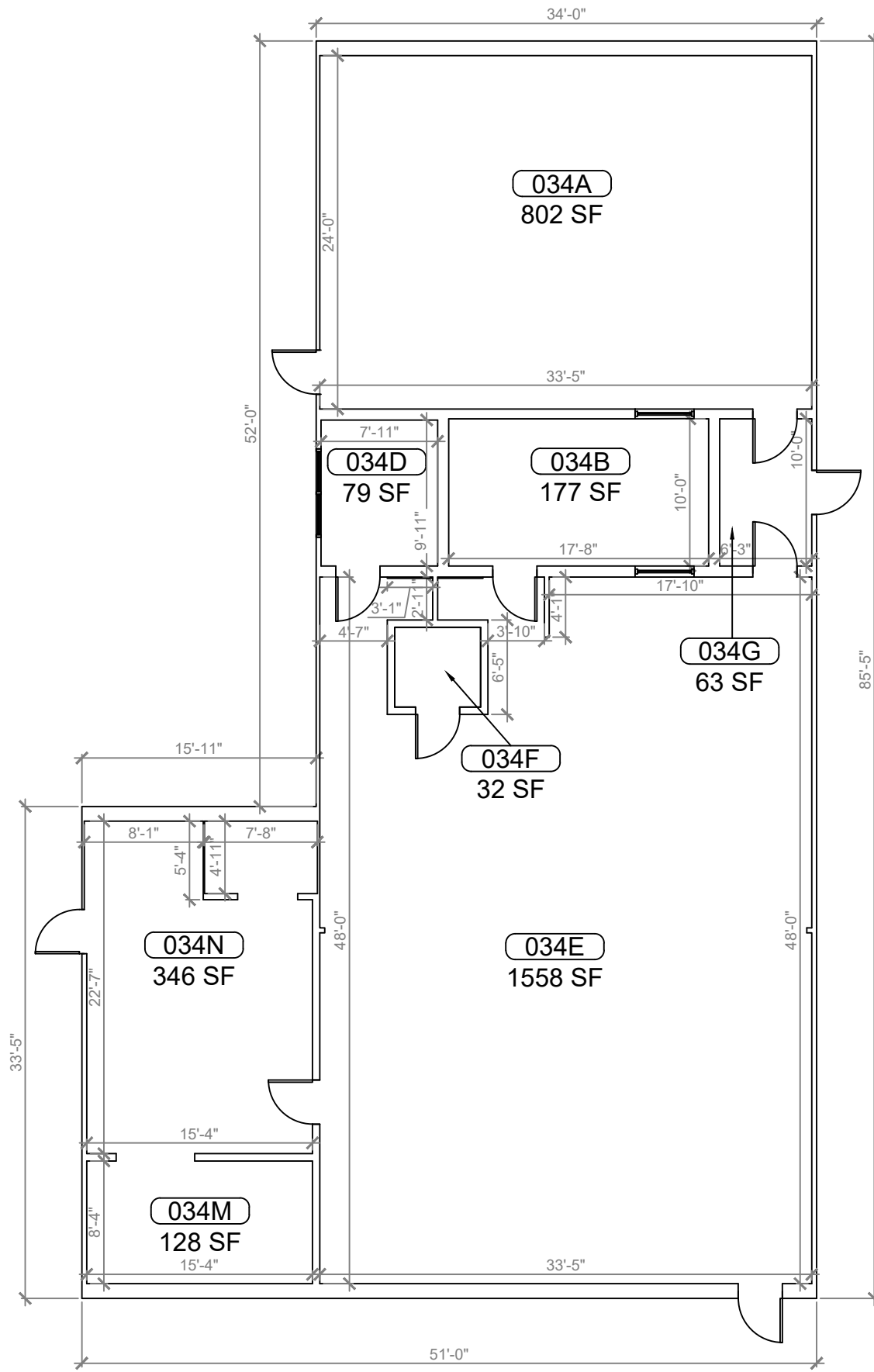
PREPARED BY:
ARCHIS
350 E. Crown Point Road, Suite 1100
Winter Garden, FL 34787
Main: 888.324.2557
Direct: 407.439.1594

DATE _____
, PE
FL PROFESSIONAL ENGINEER LIC. # _____

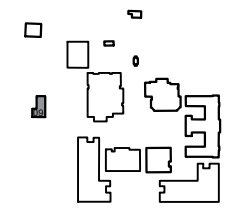
Tavares High School
(FISH PLAN)
603 N New Hampshire
Ave, Tavares, FL

SHEET DESCRIPTION
BUILDING 08

SHEET NUMBER
B-08

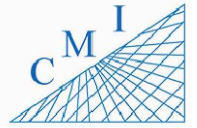


1
B-09 **BUILDING 09 FLOOR PLAN**
SCALE: 1/4"=1'-0"



REV	DATE	DESCRIPTION
A	02/11/21	PRELIMINARY FISH PLAN
B		
0		
1		
2		
3		
4		
5		
6		

ARCHIS PROJECT NO.:
DRAWN BY: VP CHECKED BY: SH



158 Terra Mango Loop, Suite B,
Orlando, FL 32835
Main: (407) 293-4168

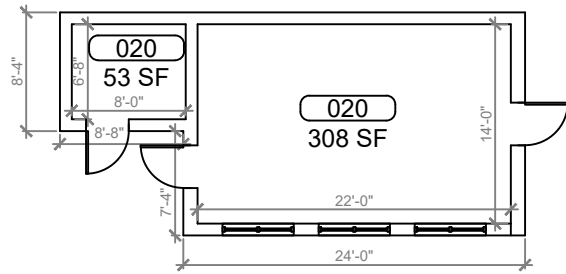
PREPARED BY:
ARCHIS
350 E. Crown Point Road, Suite 1100
Winter Garden, FL 34787
Main: 888.324.2557
Direct: 407.439.1594

DATE _____
_____, PE
FL PROFESSIONAL ENGINEER LIC. # _____

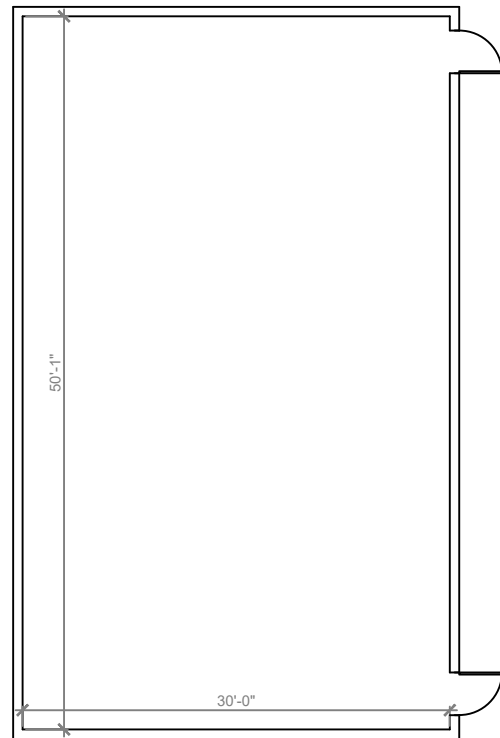
Tavares High School
(FISH PLAN)
603 N New Hampshire
Ave, Tavares, FL

SHEET DESCRIPTION
BUILDING 09

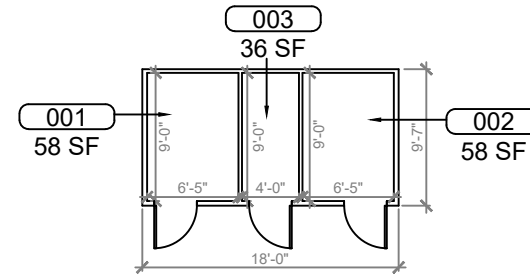
SHEET NUMBER
B-09



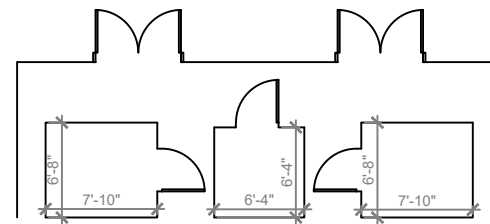
1 BUILDING 20 FLOOR PLAN
SCALE: 3/16"=1'-0"



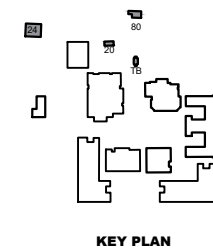
4 BUILDING 24 FLOOR PLAN
SCALE: 3/16"=1'-0"



2 BUILDING 80 FLOOR PLAN
SCALE: 3/16"=1'-0"



3 BUILDING TICKET BOOTH FLOOR PLAN
SCALE: 3/16"=1'-0"



REV	DATE	DESCRIPTION
A	02/11/21	PRELIMINARY FISH PLAN
B		
0		
1		
2		
3		
4		
5		
6		

ARCHIS PROJECT NO.:
DRAWN BY: VP CHECKED BY: SH



PREPARED BY:
ARCHIS
350 E. Crown Point Road, Suite 1100
Winter Garden, FL 34787
Main: 888.324.2557
Direct: 407.439.1594

DATE
, PE
FL PROFESSIONAL ENGINEER LIC. #

Tavares High School
(FISH PLAN)
603 N New Hampshire
Ave, Tavares, FL

SHEET DESCRIPTION
**BUILDING 20,
24, 80 & TB**

SHEET NUMBER
B-10