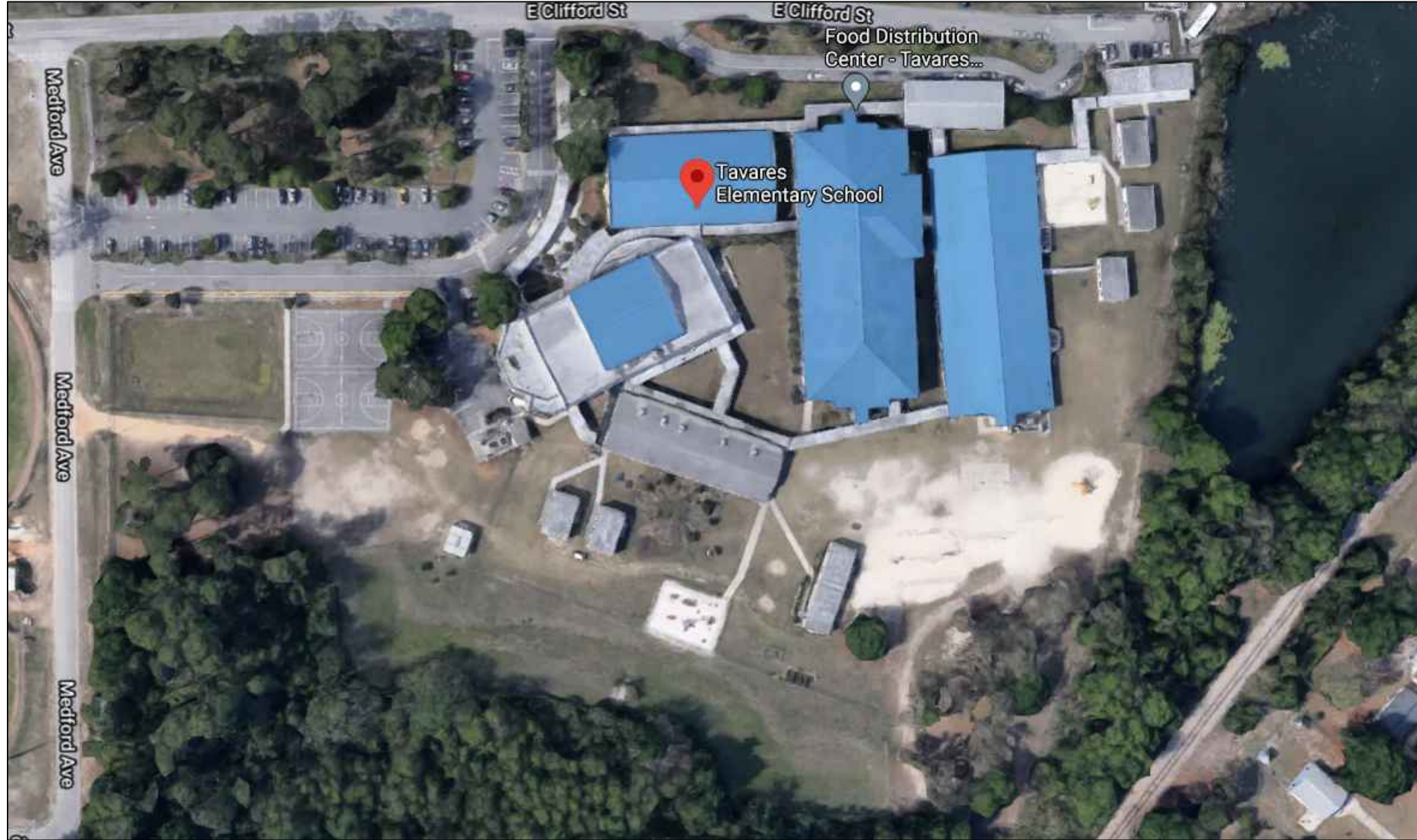


Tavares Elementary School

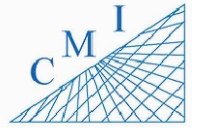


INDEX OF DRAWINGS

SHT. NO.	DESCRIPTION
SP-01	AERIAL
SP-02	SITE PLAN
B-01	BUILDING 01
B-02	BUILDING 02
B-03.1	BUILDING 03
B-03.2	BUILDING 03
B-04	BUILDING 04
B-05	BUILDING 05
B-06	BUILDING 06 & 07

REV	DATE	DESCRIPTION
A	01/21/21	PRELIMINARY FISH PLAN
B		
0		
1		
2		
3		
4		
5		
6		

ARCHIS PROJECT NO.:
 DRAWN BY: YP
 CHECKED BY: SH



158 Terra Mango Loop, Suite B,
 Orlando, FL 32835
 Main: (407) 293-4168

PREPARED BY:



350 E. Crown Point Road, Suite 1100
 Winter Garden, FL 34787
 Main: 888.324.2557
 Direct: 407.439.1594

DATE _____
 _____, PE
 FL PROFESSIONAL ENGINEER LIC. # _____

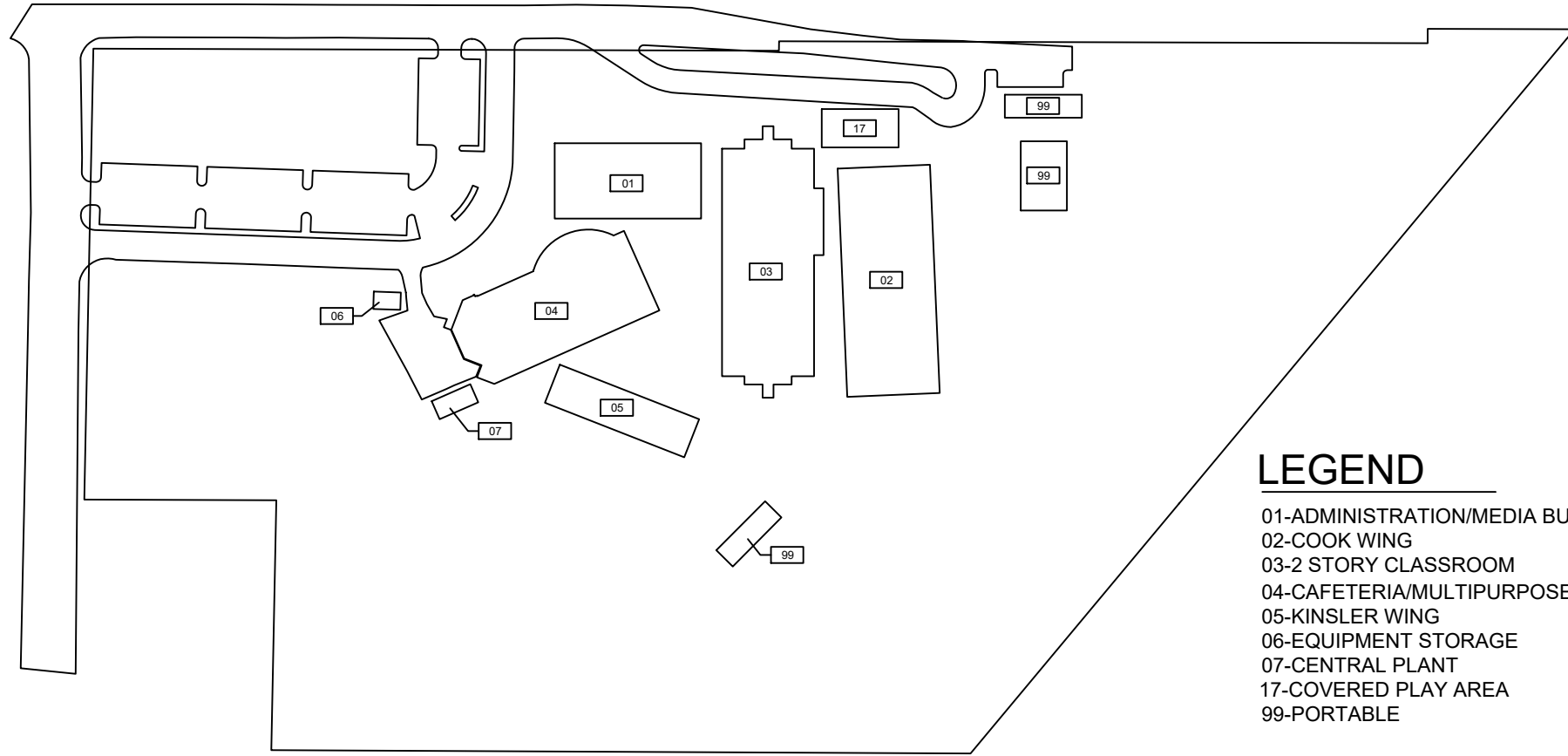
**Tavares Elementary School
 (FISH PLAN)**

720 E Clifford St,
 Tavares, FL

SHEET DESCRIPTION
AERIAL VIEW

SHEET NUMBER
SP-01

1
 SP-01 **AERIAL VIEW**
 SCALE: N.T.S.



LEGEND

- 01-ADMINISTRATION/MEDIA BUILDING
- 02-COOK WING
- 03-2 STORY CLASSROOM
- 04-CAFETERIA/MULTIPURPOSE BUILDING
- 05-KINSLER WING
- 06-EQUIPMENT STORAGE
- 07-CENTRAL PLANT
- 17-COVERED PLAY AREA
- 99-PORTABLE

1 OVERALL SITE PLAN
 SP-02 SCALE: 1/64



REV	DATE	DESCRIPTION
A	01/21/21	PRELIMINARY FISH PLAN
B		
0		
1		
2		
3		
4		
5		
6		

ARCHIS PROJECT NO.:
 DRAWN BY: YP CHECKED BY: SH



CMI
 158 Terra Mango Loop, Suite B,
 Orlando, FL 32835
 Main: (407) 293-4168

PREPARED BY:

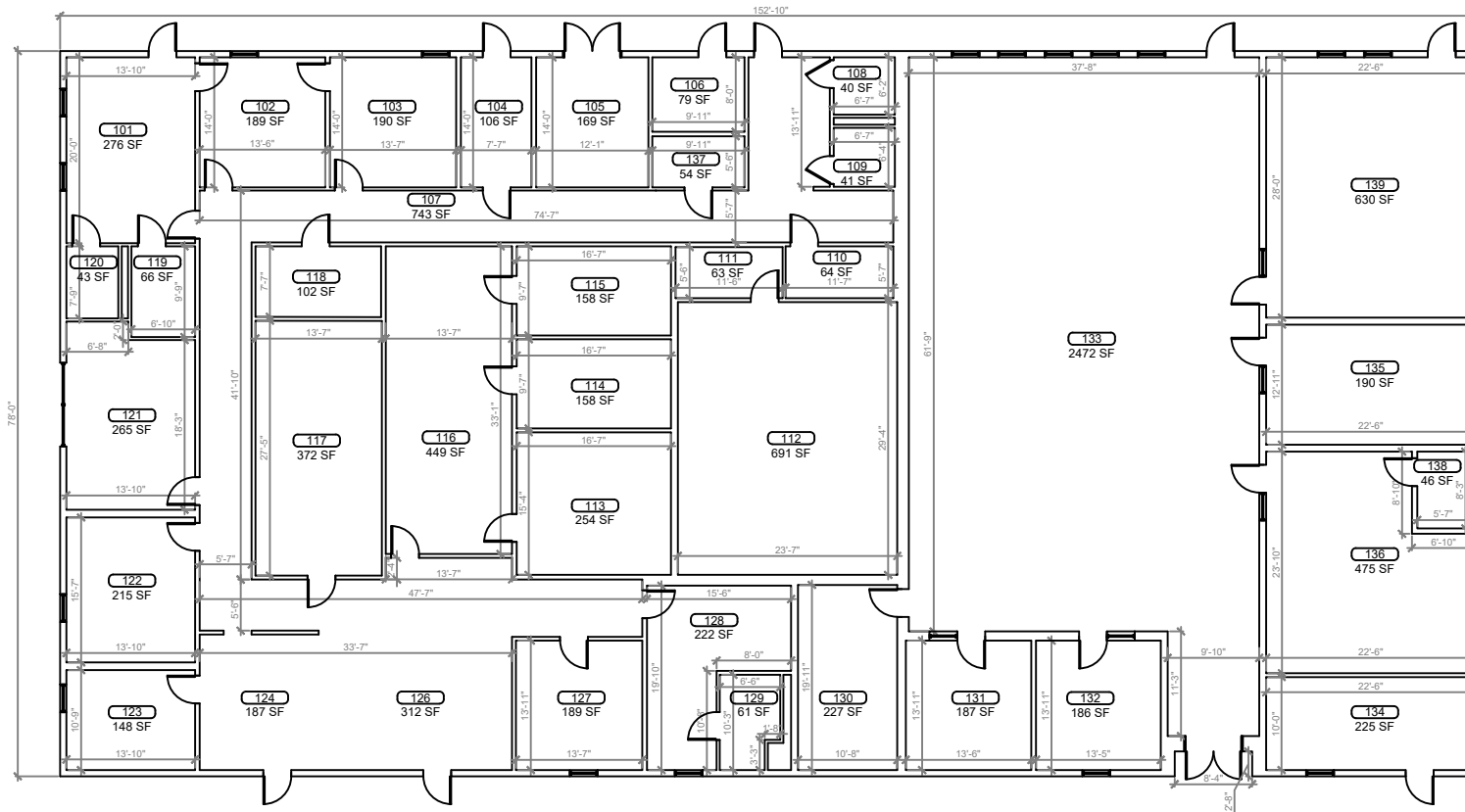
 350 E. Crown Point Road, Suite 1100
 Winter Garden, FL 34787
 Main: 888.324.2557
 Direct: 407.439.1594

DATE _____
 _____, PE
 FL PROFESSIONAL ENGINEER LIC. # _____

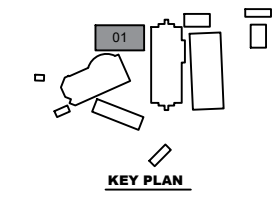
Tavares Elementary School
(FISH PLAN)
 720 E Clifford St,
 Tavares, FL

SHEET DESCRIPTION
OVERALL SITE PLAN

SHEET NUMBER
SP-02

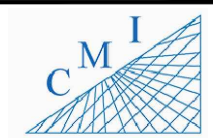


1
B-01 **BUILDING 01 FLOOR PLAN**
SCALE: 1/8"=1'-0"



REV	DATE	DESCRIPTION
A	01/21/21	PRELIMINARY FISH PLAN
B		
0		
1		
2		
3		
4		
5		
6		

ARCHIS PROJECT NO.:
DRAWN BY: YP
CHECKED BY: SH



158 Terra Mango Loop, Suite B,
Orlando, FL 32835
Main: (407) 293-4168

PREPARED BY:
ARCHIS
350 E. Crown Point Road, Suite 1100
Winter Garden, FL 34787
Main: 888.324.2557
Direct: 407.439.1594

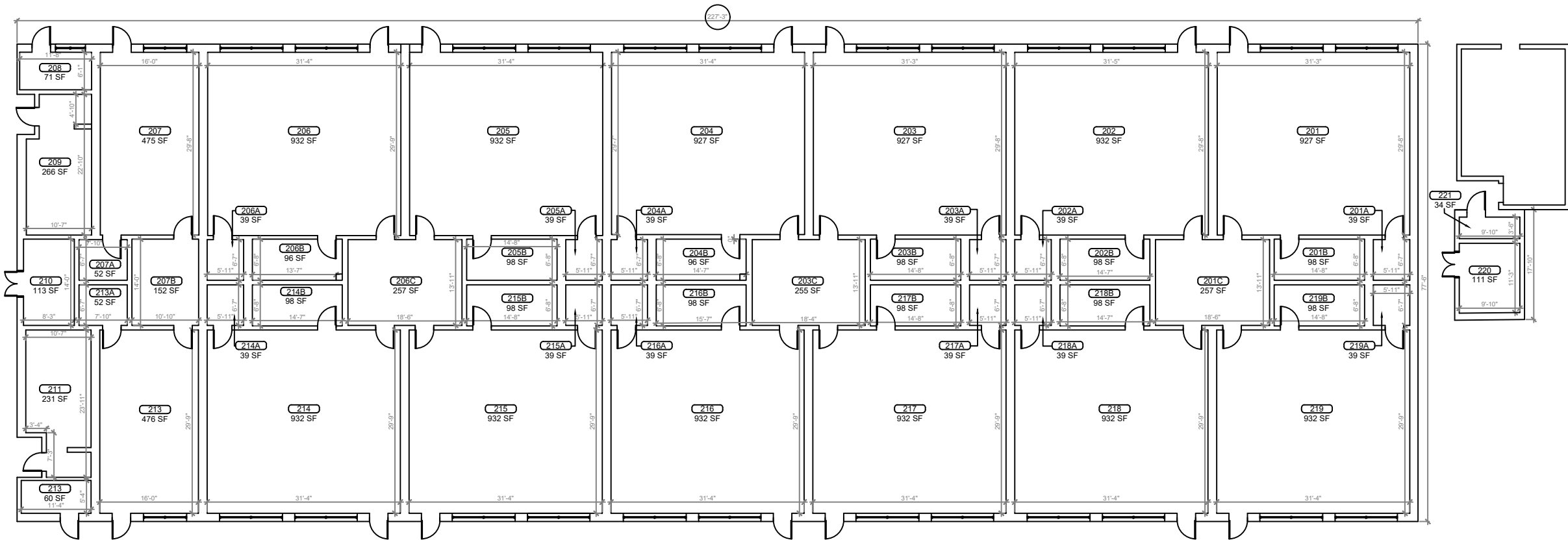
DATE
, PE
FL PROFESSIONAL ENGINEER LIC. #

Tavares Elementary School
(FISH PLAN)
720 E Clifford St,
Tavares, FL

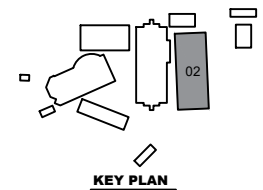
SHEET DESCRIPTION
BUILDING 01

SHEET NUMBER
B-01

ARCHIS TECHNOLOGIES - \\server-1\H\Archis\896\Fish Survey Lake County_Tavares ES.dwg January 22, 2021 13:12:36 PC20

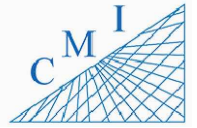


1
B-02 **BUILDING 02 FLOOR PLAN**
SCALE: 1/8"=1'-0"



REV	DATE	DESCRIPTION
A	01/21/21	PRELIMINARY FISH PLAN
B		
0		
1		
2		
3		
4		
5		
6		

ARCHIS PROJECT NO.:
DRAWN BY: YP
CHECKED BY: SH



158 Terra Mango Loop, Suite B,
Orlando, FL 32835
Main: (407) 293-4168

PREPARED BY:
ARCHIS
350 E. Crown Point Road, Suite 1100
Winter Garden, FL 34787
Main: 888.324.2557
Direct: 407.439.1594

DATE
, PE
FL PROFESSIONAL ENGINEER LIC. #

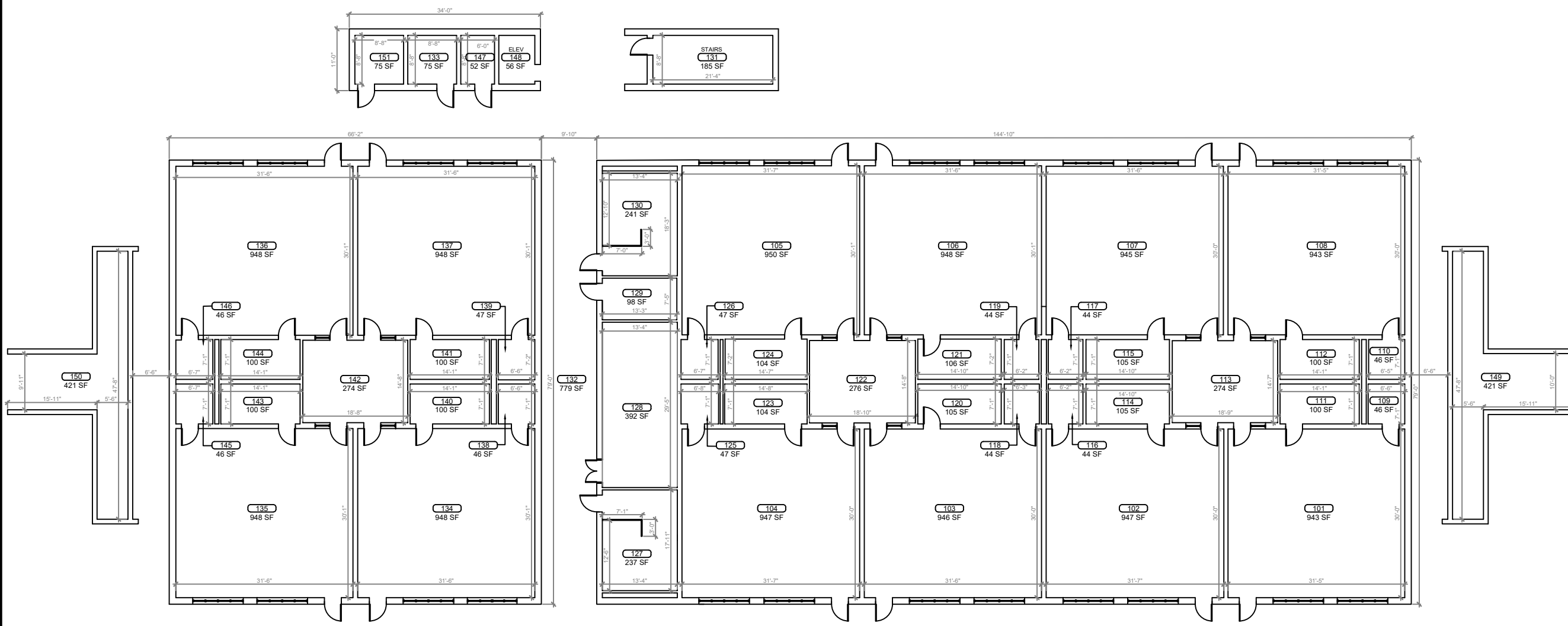
Tavares Elementary School (FISH PLAN)

720 E Clifford St,
Tavares, FL

SHEET DESCRIPTION
BUILDING 02

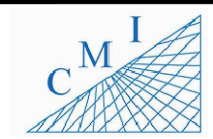
SHEET NUMBER
B-02

ARCHIS TECHNOLOGIES - \\server-1\H\Archis\896\Fish Survey Lake County_Tavares ES.dwg January 22, 2021 13:12:41 PC20



REV	DATE	DESCRIPTION
A	01/21/21	PRELIMINARY FISH PLAN
B		
0		
1		
2		
3		
4		
5		
6		

ARCHIS PROJECT NO.:
 DRAWN BY: YP
 CHECKED BY: SH



158 Terra Mango Loop, Suite B,
 Orlando, FL 32835
 Main: (407) 293-4168

PREPARED BY:
ARCHIS
 350 E. Crown Point Road, Suite 1100
 Winter Garden, FL 34787
 Main: 888.324.2557
 Direct: 407.439.1594

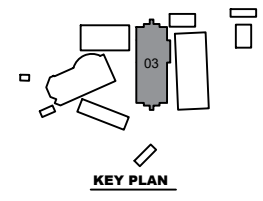
DATE
 , PE
 FL PROFESSIONAL ENGINEER LIC. #

Tavares Elementary School
(FISH PLAN)
 720 E Clifford St,
 Tavares, FL

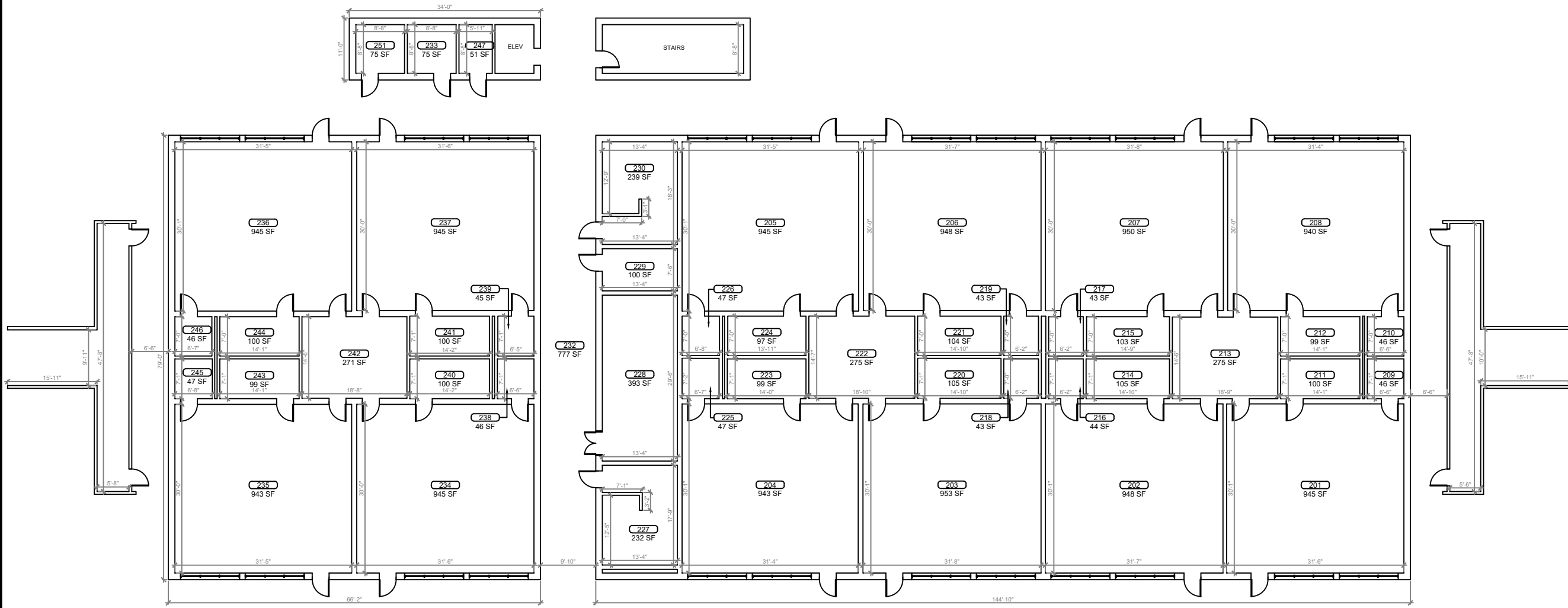
SHEET DESCRIPTION
BUILDING 03

SHEET NUMBER
B-03.1

1 BUILDING 03 FIRST FLOOR PLAN
 SCALE: 1/8"=1'-0"

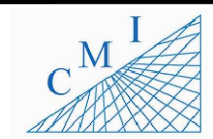


ARCHIS TECHNOLOGIES - \\server-1\H\Archis\896\Fish Survey Lake County_Tavares ES.dwg January 22, 2021 13:12:46 PC20



REV	DATE	DESCRIPTION
A	01/21/21	PRELIMINARY FISH PLAN
B		
0		
1		
2		
3		
4		
5		
6		

ARCHIS PROJECT NO.:
 DRAWN BY: YP
 CHECKED BY: SH



158 Terra Mango Loop, Suite B,
 Orlando, FL 32835
 Main: (407) 293-4168

PREPARED BY:
ARCHIS
 350 E. Crown Point Road, Suite 1100
 Winter Garden, FL 34787
 Main: 888.324.2557
 Direct: 407.439.1594

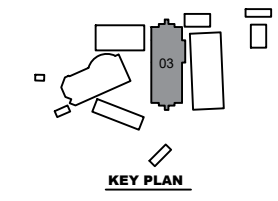
DATE _____
 , PE
 FL PROFESSIONAL ENGINEER LIC. # _____

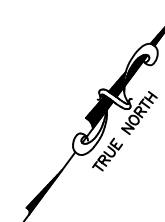
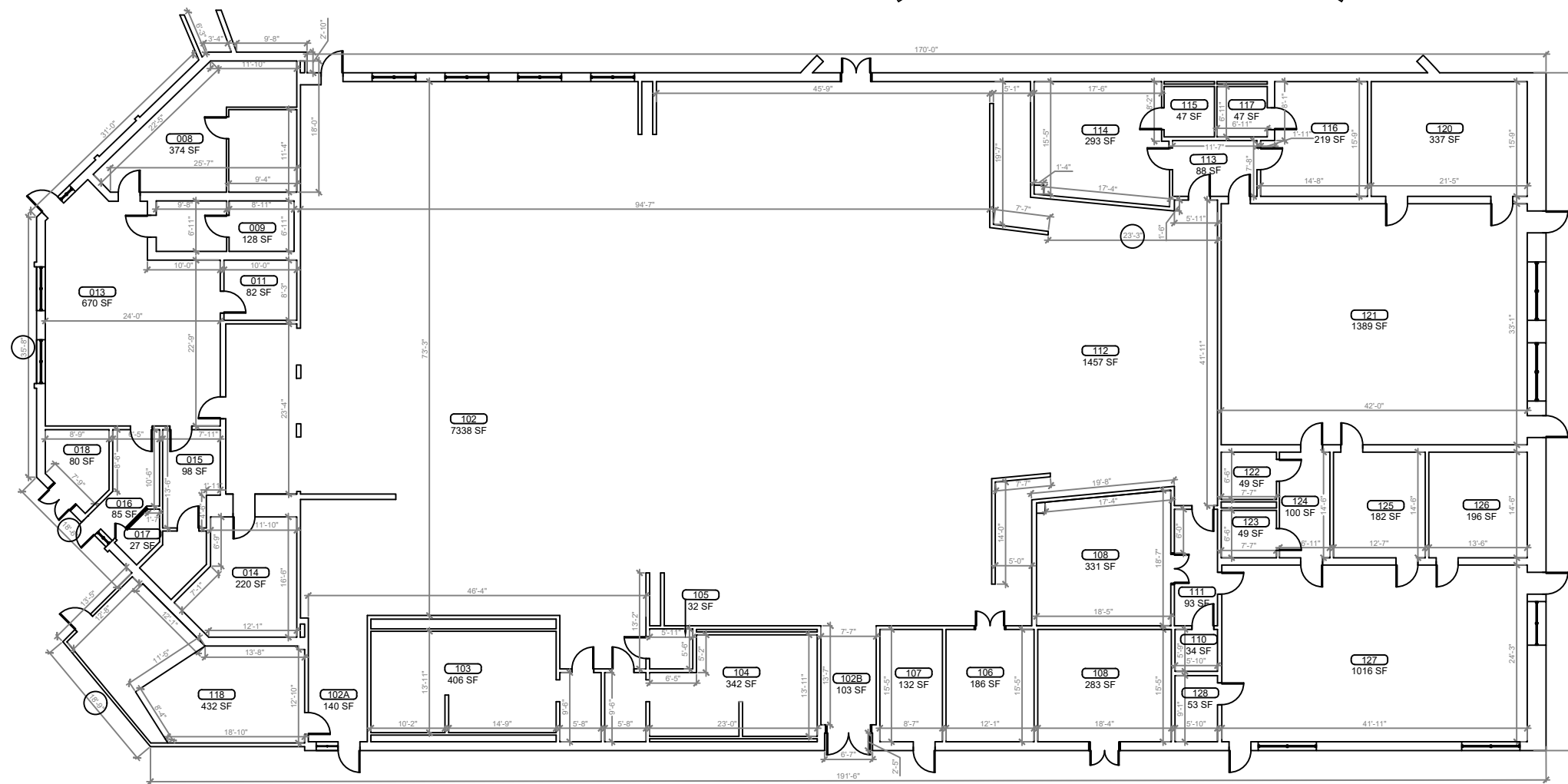
Tavares Elementary School
(FISH PLAN)
 720 E Clifford St,
 Tavares, FL

SHEET DESCRIPTION
BUILDING 03

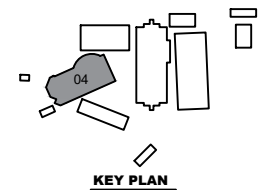
SHEET NUMBER
B-03.2

1
BUILDING 03 SECOND FLOOR PLAN
 SCALE: 1/8"=1'-0"



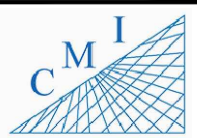


1
B-04 **BUILDING 04 FLOOR PLAN**
SCALE: 1/8"=1'-0"



REV	DATE	DESCRIPTION
A	01/21/21	PRELIMINARY FISH PLAN
B		
0		
1		
2		
3		
4		
5		
6		

ARCHIS PROJECT NO.:
DRAWN BY: YP
CHECKED BY: SH



158 Terra Mango Loop, Suite B,
Orlando, FL 32835
Main: (407) 293-4168

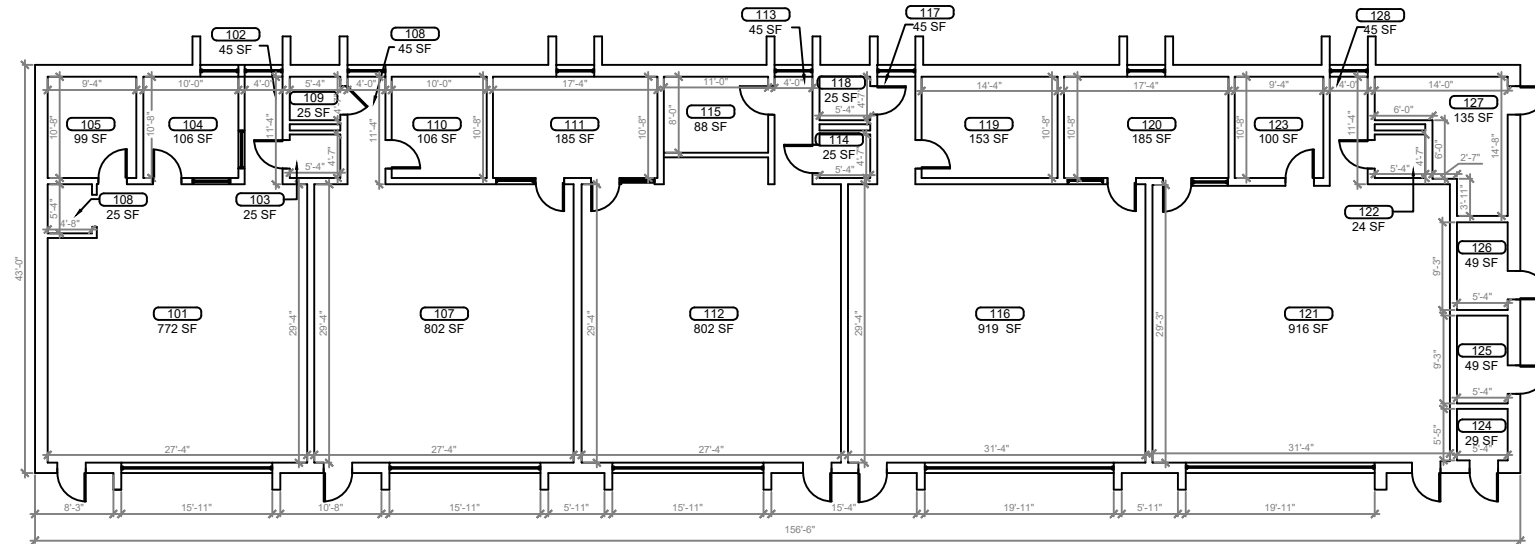
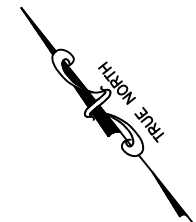
PREPARED BY:
ARCHIS
350 E. Crown Point Road, Suite 1100
Winter Garden, FL 34787
Main: 888.324.2557
Direct: 407.439.1594

DATE _____
, PE
FL PROFESSIONAL ENGINEER LIC. # _____

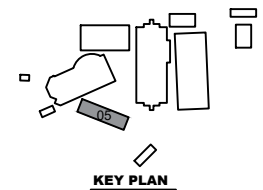
Tavares Elementary School
(FISH PLAN)
720 E Clifford St,
Tavares, FL

SHEET DESCRIPTION
BUILDING 04

SHEET NUMBER
B-04



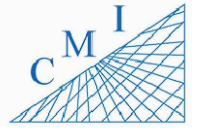
1
B-05 **BUILDING 05 FLOOR PLAN**
SCALE: 1/8"=1'-0"



REV	DATE	DESCRIPTION
A	01/21/21	PRELIMINARY FISH PLAN
B		
0		
1		
2		
3		
4		
5		
6		

ARCHIS PROJECT NO.:

DRAWN BY: YP CHECKED BY: SH



158 Terra Mango Loop, Suite B,
Orlando, FL 32835
Main: (407) 293-4168

PREPARED BY:

ARCHIS

350 E. Crown Point Road, Suite 1100
Winter Garden, FL 34787
Main: 888.324.2557
Direct: 407.439.1594

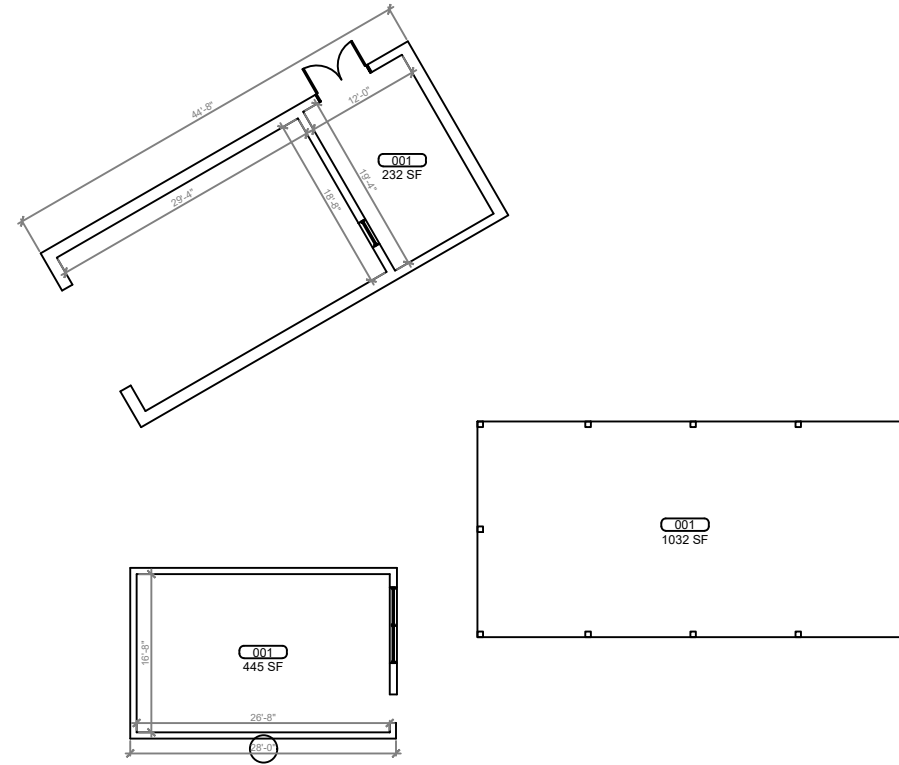
DATE _____

_____, PE
FL PROFESSIONAL ENGINEER LIC. # _____

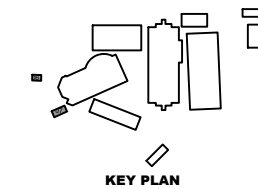
Tavares Elementary School
(FISH PLAN)
720 E Clifford St,
Tavares, FL

SHEET DESCRIPTION
BUILDING 05

SHEET NUMBER
B-05



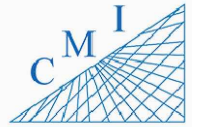
1
B-06 **BUILDING 06, 07 & 17 FLOOR PLAN**
SCALE: 1/8"=1'-0"



REV	DATE	DESCRIPTION
A	01/21/21	PRELIMINARY FISH PLAN
B		
0		
1		
2		
3		
4		
5		
6		

ARCHIS PROJECT NO.:

DRAWN BY: YP CHECKED BY: SH



158 Terra Mango Loop, Suite B,
Orlando, FL 32835
Main: (407) 293-4168

PREPARED BY:

ARCHIS

350 E. Crown Point Road, Suite 1100
Winter Garden, FL 34787
Main: 888.324.2557
Direct: 407.439.1594

DATE _____

_____, PE
FL PROFESSIONAL ENGINEER LIC. # _____

Tavares Elementary School
(FISH PLAN)
720 E Clifford St,
Tavares, FL

SHEET DESCRIPTION
**BUILDING 06,
07 & 17**

SHEET NUMBER
B-06