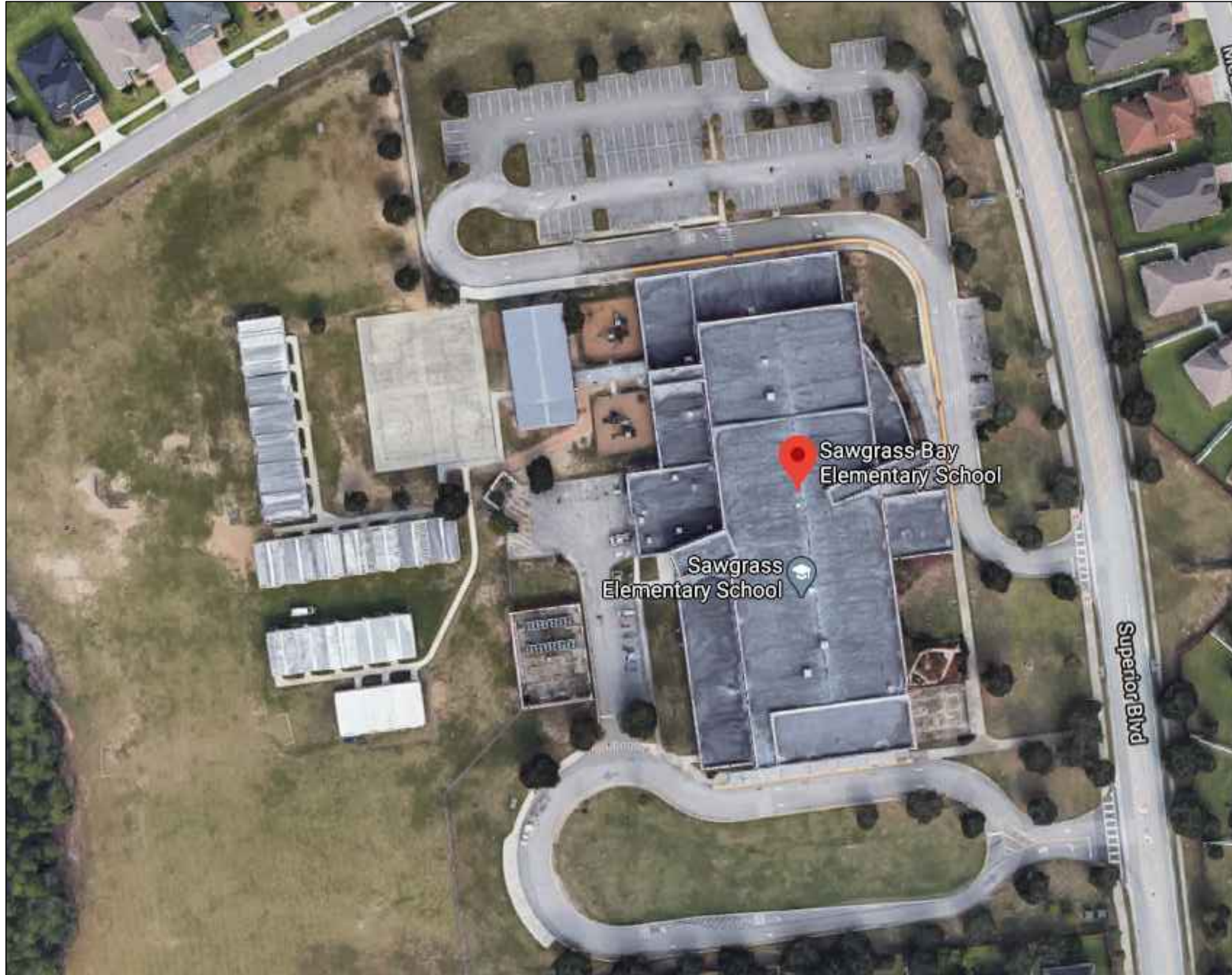


SAWGRASS BAY ELEMENTARY SCHOOL



REV	DATE	DESCRIPTION
A	02/18/21	PRELIMINARY FISH PLAN
B		
0		
1		
2		
3		
4		
5		
6		

ARCHIS PROJECT NO.:

DRAWN BY:	CHECKED BY:
YP	SH



PREPARED BY:



INDEX OF DRAWINGS	
SHT. NO.	DESCRIPTION
SP-01	AERIAL
SP-02	SITE PLAN
B-01.1	BUILDING 01.1 FIRST FLOOR
B-01.1A	BUILDING 01.1A FIRST FLOOR
B-01.1B	BUILDING 01.1B FIRST FLOOR
B-01.2	BUILDING 01.2 SECOND FLOOR
B-01.2A	BUILDING 01.2A SECOND FLOOR
B-01.2B	BUILDING 01.2B SECOND FLOOR
B-02	BUILDING 02

DATE

, PE
FL PROFESSIONAL ENGINEER LIC. #

**Sawgrass Bay
Elementary School
(FISH PLAN)**

16325 Superior Blvd,
Clermont, FL

SHEET DESCRIPTION

AERIAL VIEW

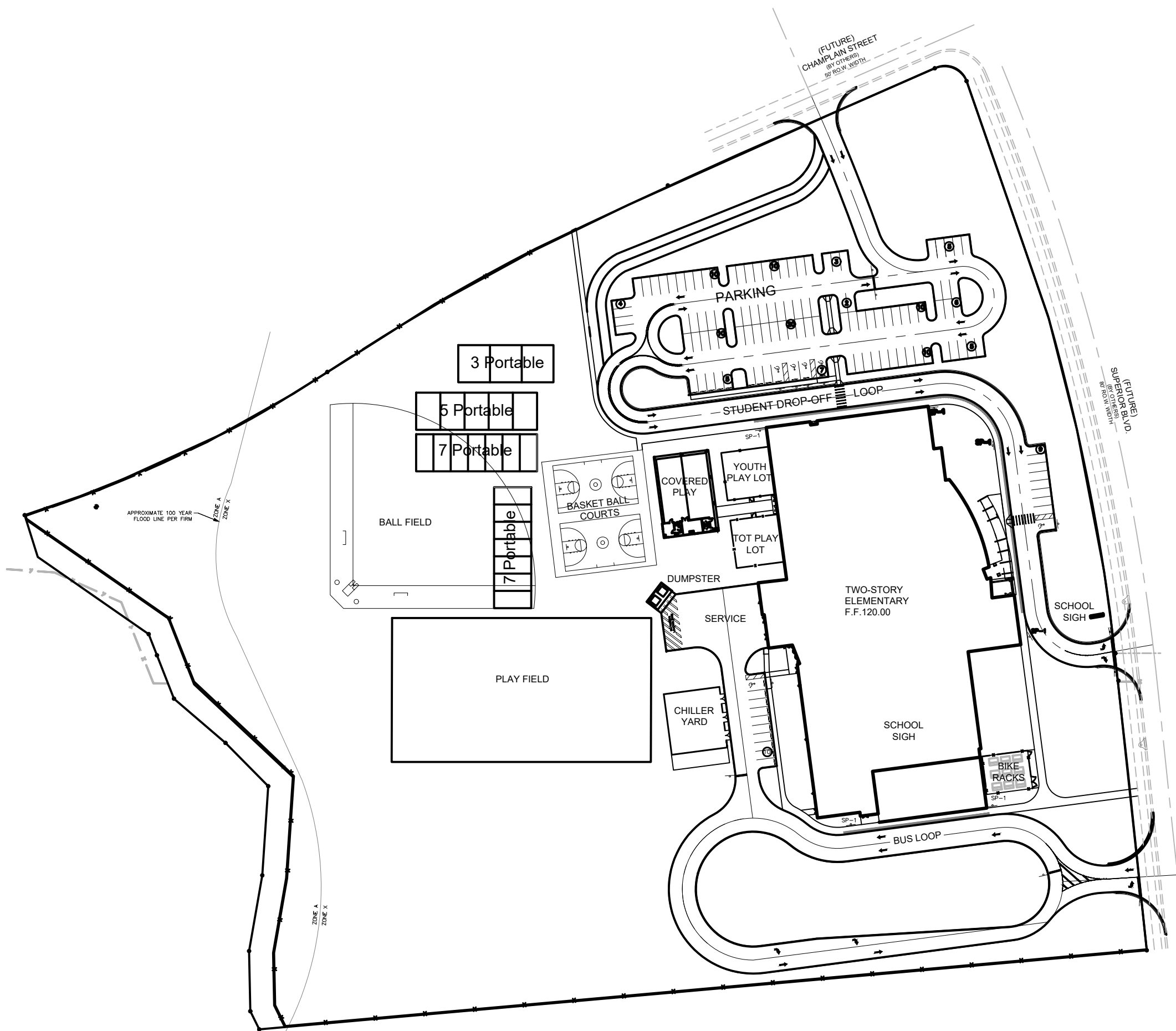
SHEET NUMBER

SP-01

1 AERIAL VIEW
SP-01 SCALE: N.T.S.

ARCHIS TECHNOLOGIES - \\server-1\H\Archis\21-020 Sawgrass Bay ES\From ISP\2021-02-18\896_Lake County Fish Survey_Sawgrass Bay ES CADD.dwg February 18, 2021 13:14:29 PC20

ARCHIS TECHNOLOGIES - \\server-1\H\Archis\21-020 Sawgrass Bay ES\From ISP\2021-02-18\896_Lake County Fish Survey_Sawgrass Bay ES_CADD.dwg February 18, 2021 13:14:37 PC20



1 OVERALL SITE PLAN
 SP-02 SCALE: N.T.S

REV	DATE	DESCRIPTION
A	02/18/21	PRELIMINARY FISH PLAN
B		
0		
1		
2		
3		
4		
5		
6		

ARCHIS PROJECT NO.:
 DRAWN BY: YP
 CHECKED BY: SH



CM I
 158 Terra Mango Loop, Suite B,
 Orlando, FL 32835
 Main: (407) 293-4168

PREPARED BY:
ARCHIS
 350 E. Crown Point Road, Suite 1100
 Winter Garden, FL 34787
 Main: 888.324.2557
 Direct: 407.439.1594

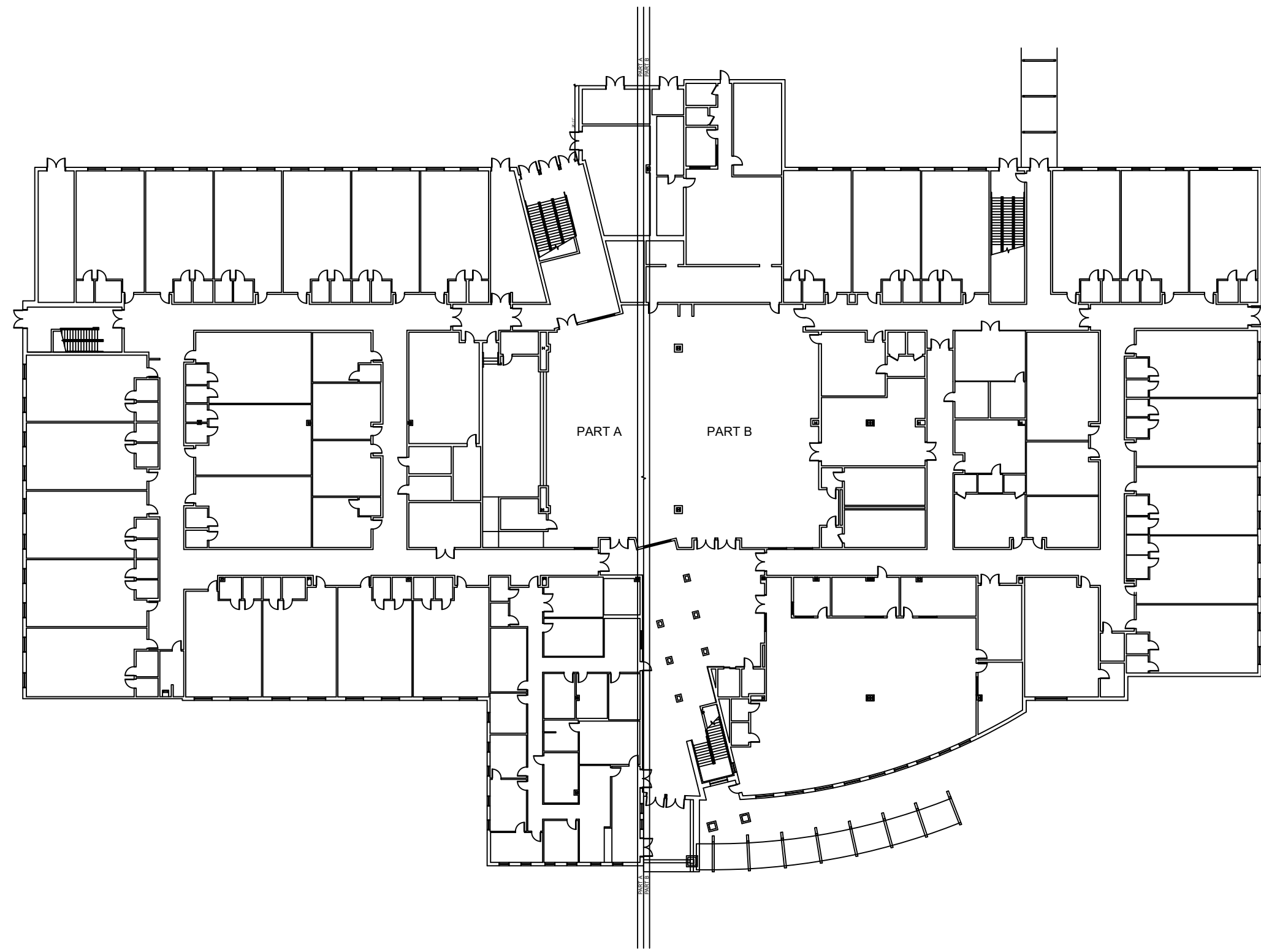
DATE
 , PE
 FL PROFESSIONAL ENGINEER LIC. #

Sawgrass Bay Elementary School (FISH PLAN)
 16325 Superior Blvd,
 Clermont, FL

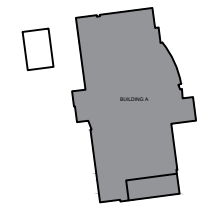
SHEET DESCRIPTION
OVERALL SITE PLAN

SHEET NUMBER
SP-02

ARCHIS TECHNOLOGIES - \\server-1\H\Archis\21-020 Sawgrass Bay ES\From ISP\2021-02-18\896_Lake County Fish Survey_Sawgrass Bay ES_CADD.dwg February 18, 2021 13:14:42 PC20



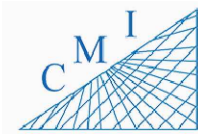
1 **BUILDING 01 FIRST FLOOR PLAN**
B-01.1 SCALE: 1/16"=1'-0"



KEY PLAN

REV	DATE	DESCRIPTION
A	02/18/21	PRELIMINARY FISH PLAN
B		
0		
1		
2		
3		
4		
5		
6		

ARCHIS PROJECT NO.:
 DRAWN BY: YP
 CHECKED BY: SH



158 Terra Mango Loop, Suite B,
 Orlando, FL 32835
 Main: (407) 293-4168

PREPARED BY:
ARCHIS
 350 E. Crown Point Road, Suite 1100
 Winter Garden, FL 34787
 Main: 888.324.2557
 Direct: 407.439.1594

DATE
 , PE
 FL PROFESSIONAL ENGINEER LIC. #

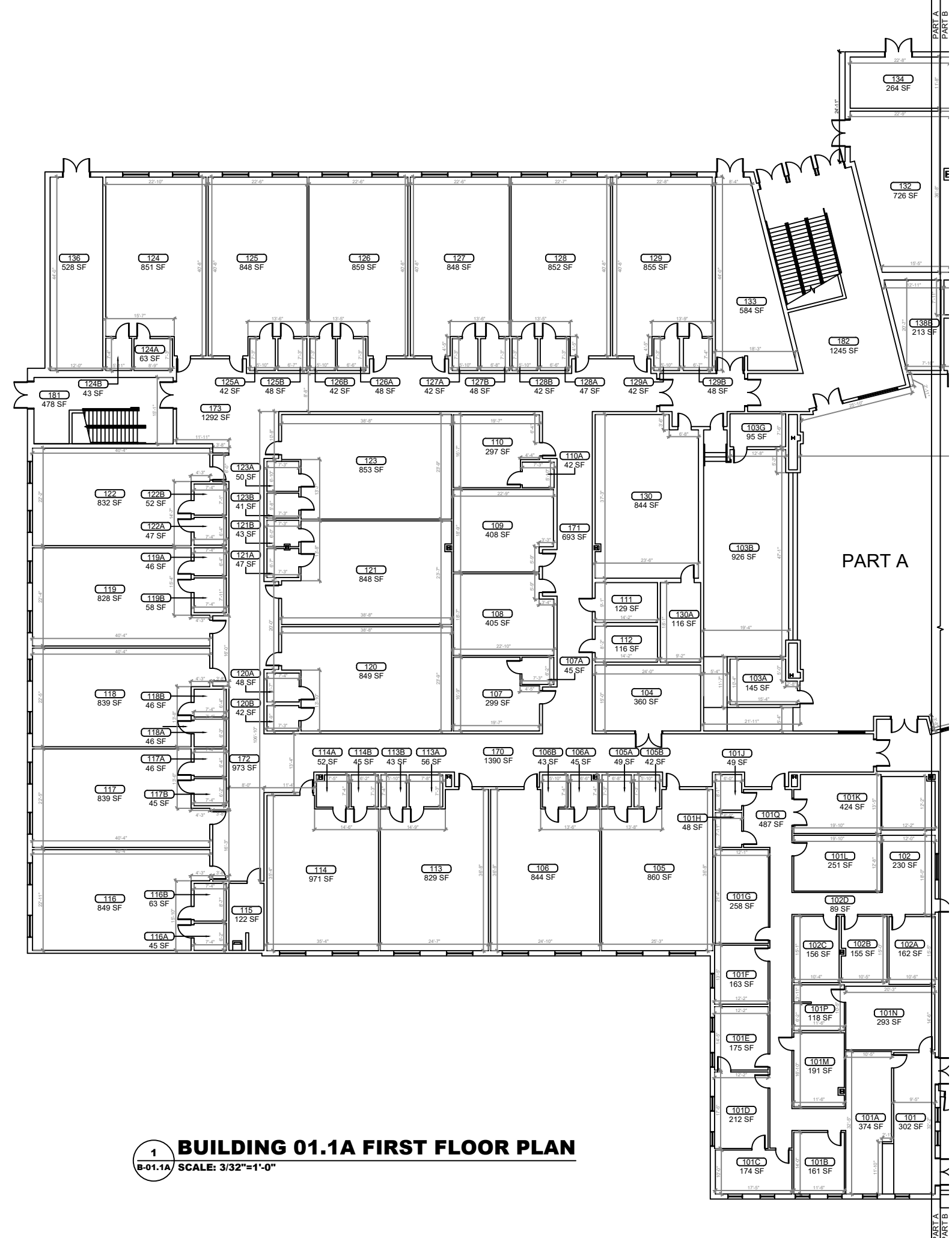
**Sawgrass Bay
 Elementary School
 (FISH PLAN)**

16325 Superior Blvd,
 Clermont, FL

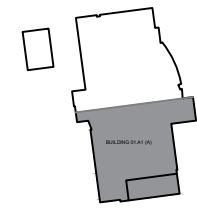
SHEET DESCRIPTION
**BUILDING
 01**

SHEET NUMBER
B-01.1

ARCHIS TECHNOLOGIES - \\server-1\H\Archis\21-020 Sawgrass Bay ES\From ISP\2021-02-18\896_Lake County Fish Survey_Sawgrass Bay ES_CADD.dwg February 18, 2021 13:14:47 PC20



1 BUILDING 01.1A FIRST FLOOR PLAN
 B-01.1A SCALE: 3/32"=1'-0"



KEY PLAN

REV	DATE	DESCRIPTION
A	02/18/21	PRELIMINARY FISH PLAN
B		
0		
1		
2		
3		
4		
5		
6		

ARCHIS PROJECT NO.:
 DRAWN BY: YP
 CHECKED BY: SH



CMI
 158 Terra Mango Loop, Suite B,
 Orlando, FL 32835
 Main: (407) 293-4168

PREPARED BY:
ARCHIS
 350 E. Crown Point Road, Suite 1100
 Winter Garden, FL 34787
 Main: 888.324.2557
 Direct: 407.439.1594

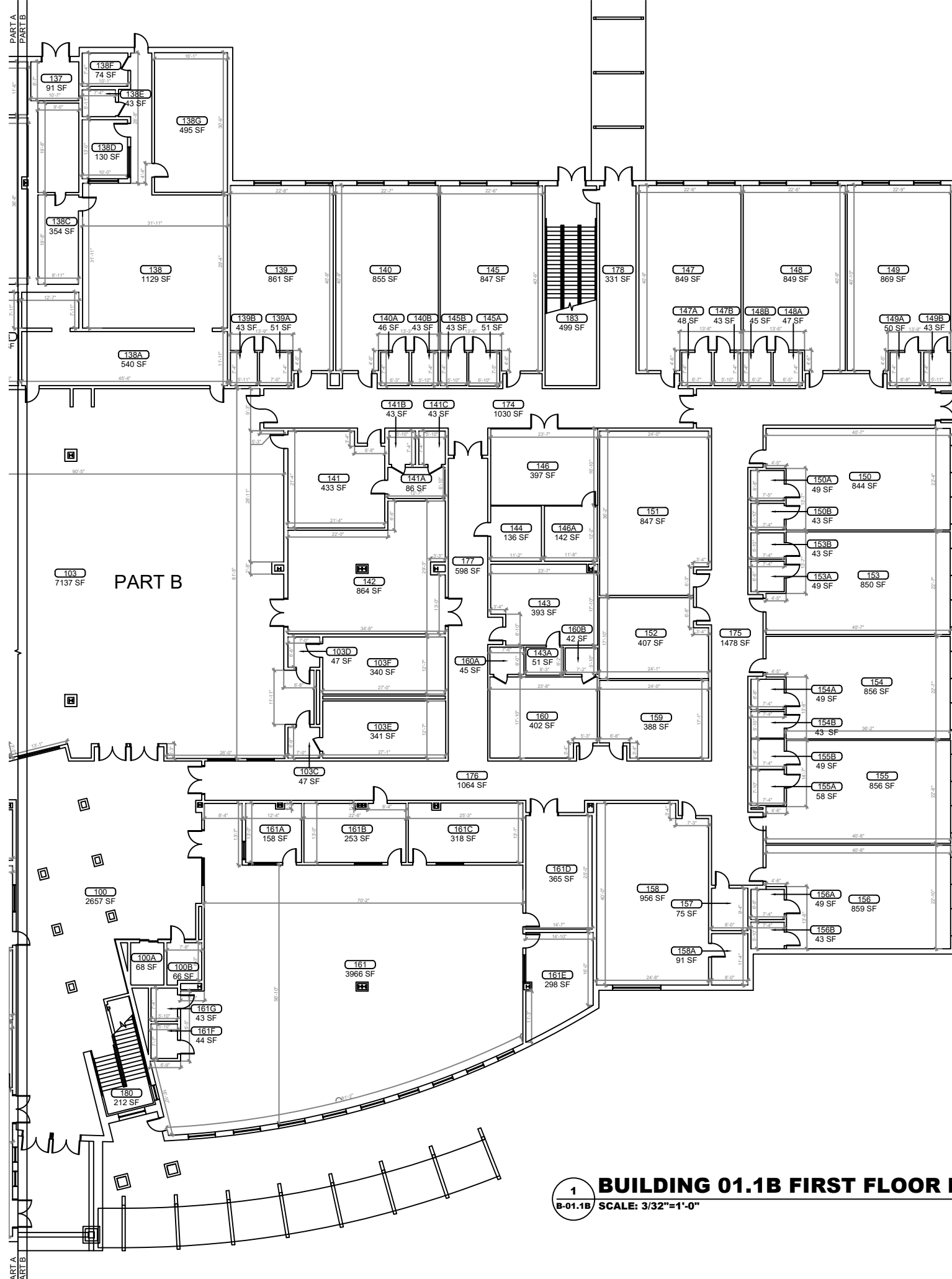
DATE
 , PE
 FL PROFESSIONAL ENGINEER LIC. #

**Sawgrass Bay
 Elementary School
 (FISH PLAN)**
 16325 Superior Blvd,
 Clermont, FL

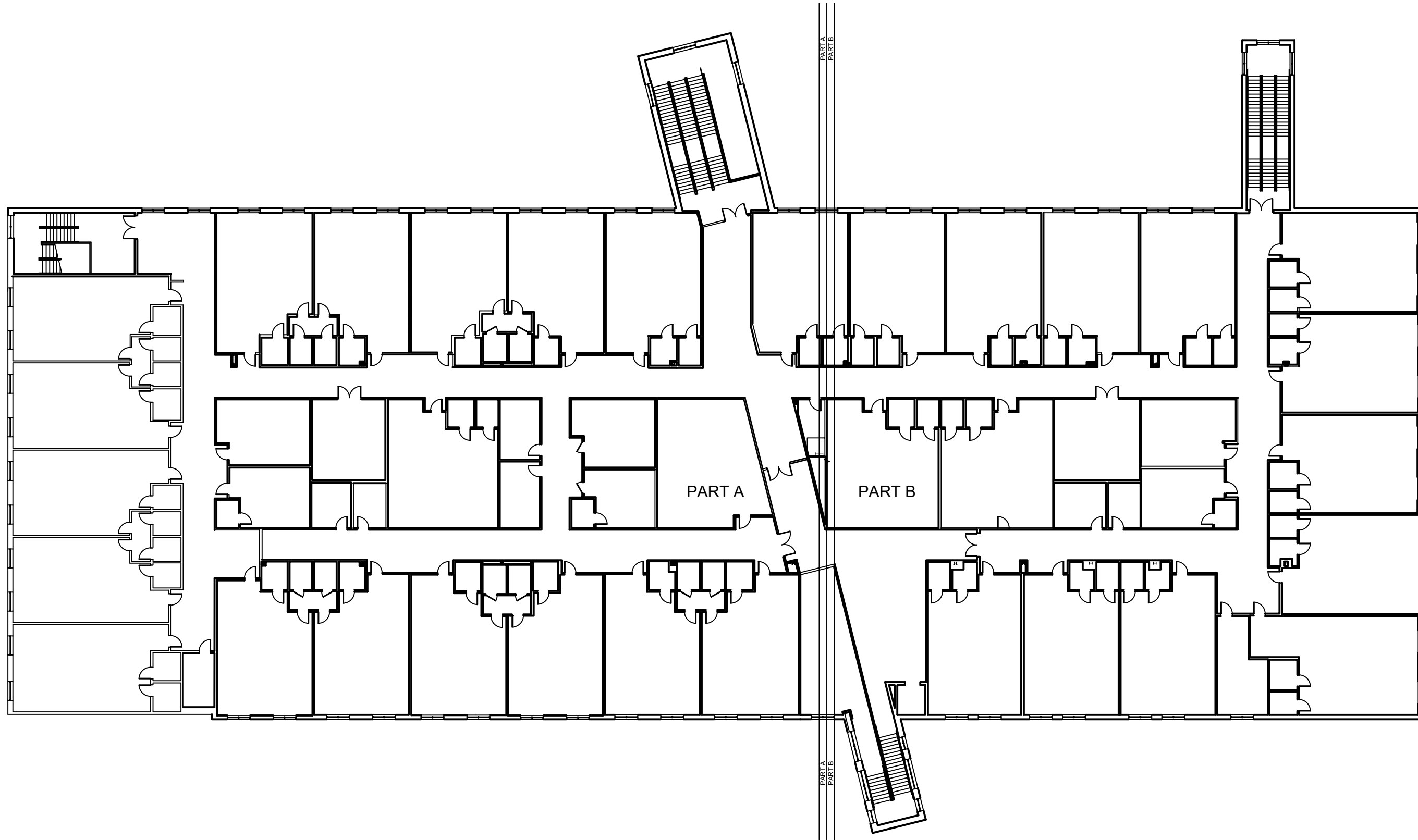
SHEET DESCRIPTION
**BUILDING
 01**

SHEET NUMBER
B-01.1A

ARCHIS TECHNOLOGIES - \\server-1\H\Archis\21-020 Sawgrass Bay ES\From ISP\2021-02-18\896_Lake County Fish Survey_Sawgrass Bay ES_CADD.dwg February 18, 2021 13:14:52 PC20



ARCHIS TECHNOLOGIES - \\server-1\H\Archis\21-020 Sawgrass Bay ES\From ISP\2021-02-18\896_Lake County Fish Survey_Sawgrass Bay ES_CADD.dwg February 18, 2021 13:14:57 PC20



REV	DATE	DESCRIPTION
A	02/18/21	PRELIMINARY FISH PLAN
B		
0		
1		
2		
3		
4		
5		
6		

ARCHIS PROJECT NO.:	
DRAWN BY:	CHECKED BY:
YP	SH



158 Terra Mango Loop, Suite B,
Orlando, FL 32835
Main: (407) 293-4168

PREPARED BY:

ARCHIS

350 E. Crown Point Road, Suite 1100
Winter Garden, FL 34787
Main: 888.324.2557
Direct: 407.439.1594

DATE

, PE

FL PROFESSIONAL ENGINEER LIC. #

**Sawgrass Bay
Elementary School
(FISH PLAN)**

16325 Superior Blvd,
Clermont, FL

SHEET DESCRIPTION

**BUILDING
01**

SHEET NUMBER

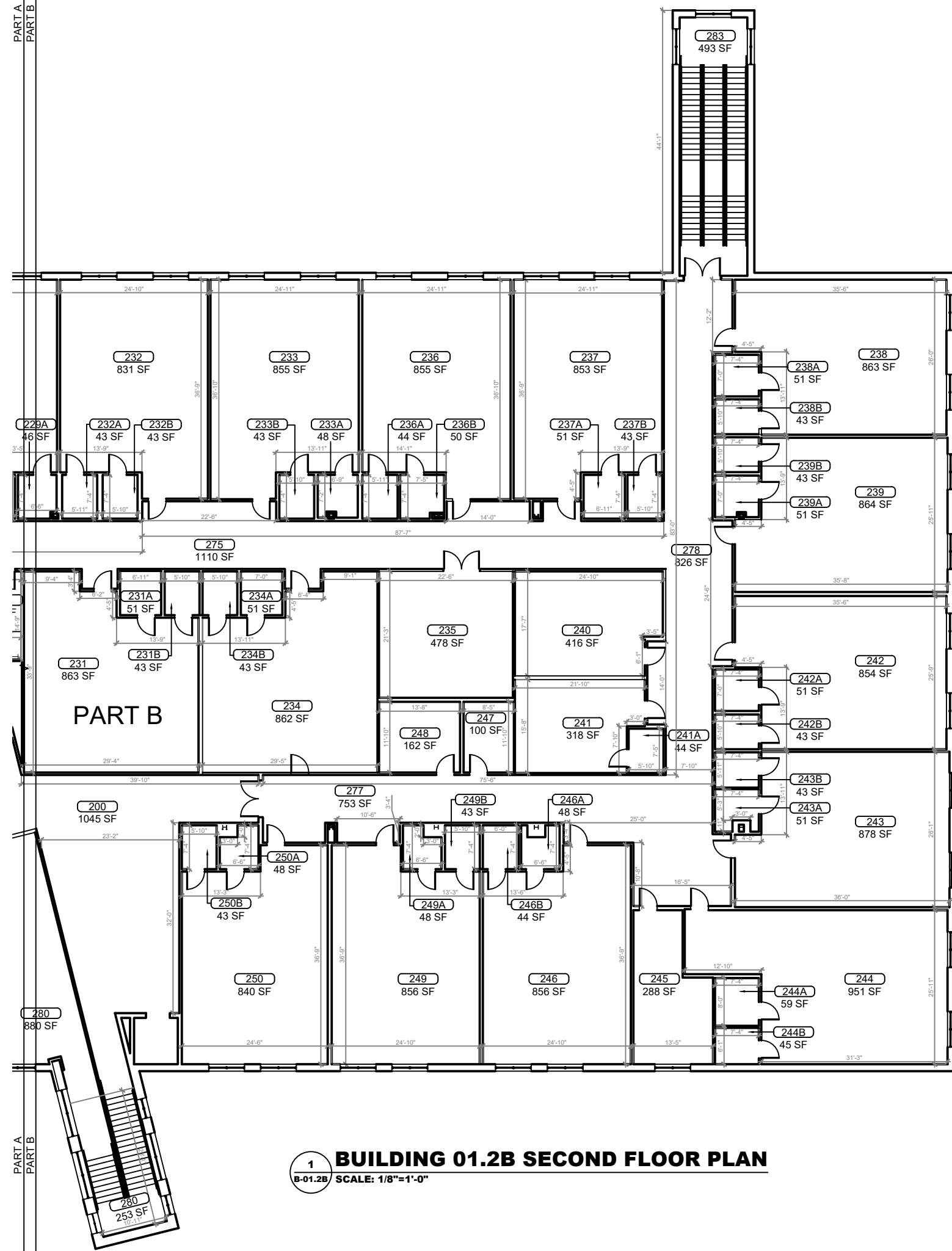
B-01.2

1 BUILDING 01 SECOND FLOOR PLAN
B-01.2 SCALE: 3/32"=1'-0"



KEY PLAN

ARCHIS TECHNOLOGIES - \\server-1\H\Archis\21-020 Sawgrass Bay ES\From ISP\2021-02-18\896_Lake County Fish Survey_Sawgrass Bay ES_CADD.dwg February 18, 2021 13:15:07 PC20



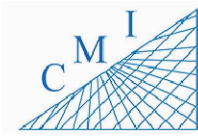
1 BUILDING 01.2B SECOND FLOOR PLAN
 B-01.2B SCALE: 1/8"=1'-0"



KEY PLAN

REV	DATE	DESCRIPTION
A	02/18/21	PRELIMINARY FISH PLAN
B		
0		
1		
2		
3		
4		
5		
6		

ARCHIS PROJECT NO.:
 DRAWN BY: YP
 CHECKED BY: SH



158 Terra Mango Loop, Suite B,
 Orlando, FL 32835
 Main: (407) 293-4168

PREPARED BY:
ARCHIS
 350 E. Crown Point Road, Suite 1100
 Winter Garden, FL 34787
 Main: 888.324.2557
 Direct: 407.439.1594

DATE
 , PE
 FL PROFESSIONAL ENGINEER LIC. #

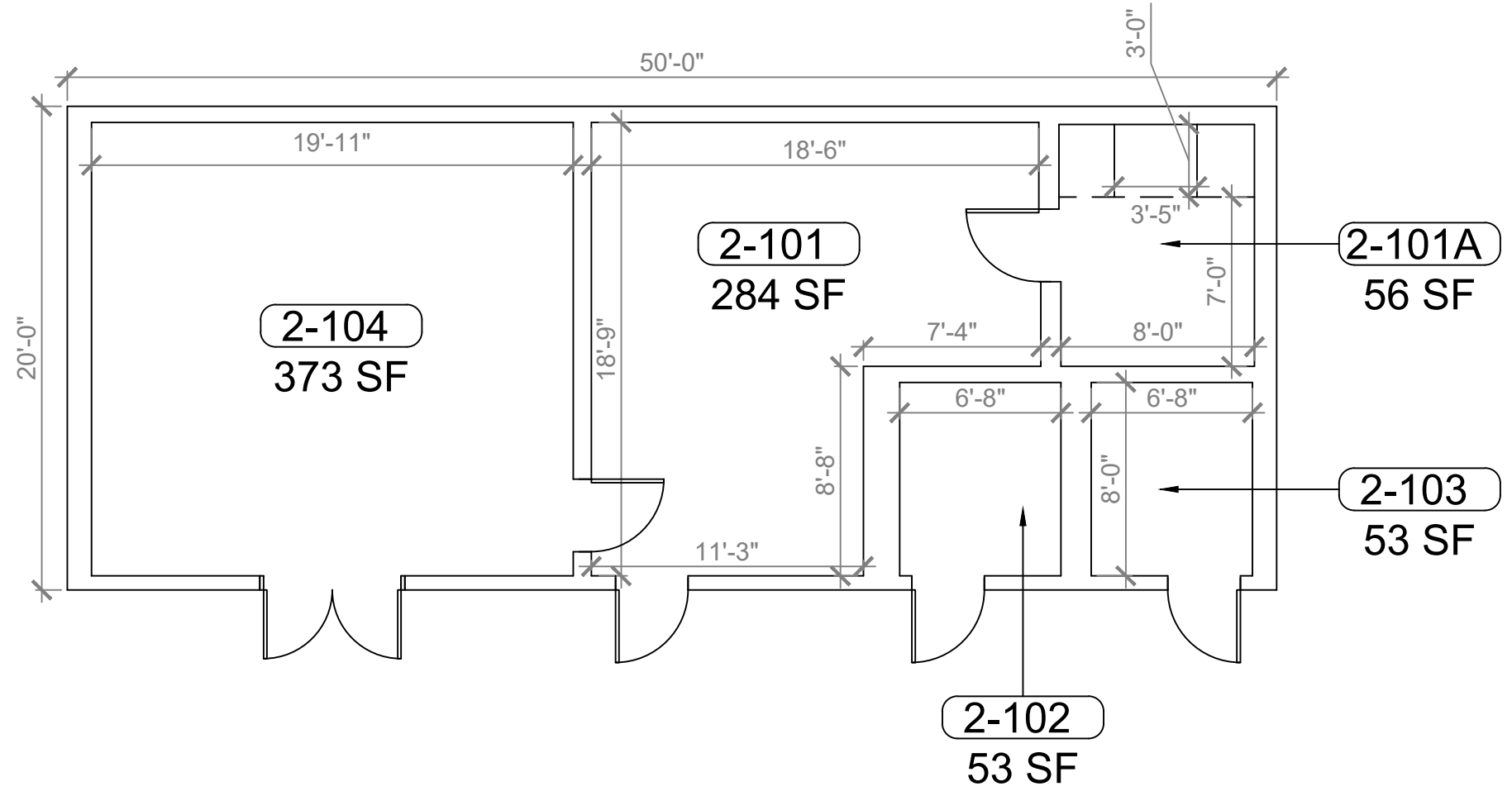
**Sawgrass Bay
 Elementary School
 (FISH PLAN)**

16325 Superior Blvd,
 Clermont, FL

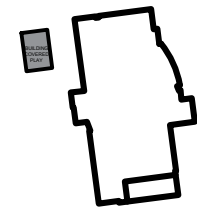
SHEET DESCRIPTION
**BUILDING
 01**

SHEET NUMBER
B-01.2B

ARCHIS TECHNOLOGIES - \\server-1\H\Archis\21-020 Sawgrass Bay ES\2021-02-18\896_Lake County Fish Survey_Sawgrass Bay ES_CADD.dwg February 18, 2021 13:15:12 PC20



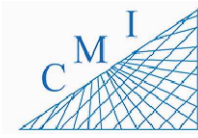
1
B-02 **BUILDING 2 FLOOR PLAN**
SCALE: 3/8"=1'-0"



KEY PLAN

REV	DATE	DESCRIPTION
A	02/18/21	PRELIMINARY FISH PLAN
B		
0		
1		
2		
3		
4		
5		
6		

ARCHIS PROJECT NO.:	
DRAWN BY:	CHECKED BY:
YP	SH



158 Terra Mango Loop, Suite B,
Orlando, FL 32835
Main: (407) 293-4168

PREPARED BY:

350 E. Crown Point Road, Suite 1100
Winter Garden, FL 34787
Main: 888.324.2557
Direct: 407.439.1594

DATE
, PE
FL PROFESSIONAL ENGINEER LIC. #

**Sawgrass Bay
Elementary School
(FISH PLAN)**

16325 Superior Blvd,
Clermont, FL

SHEET DESCRIPTION
**BUILDING
02**

SHEET NUMBER
B-02