

OAK PARK MIDDLE SCHOOL



Oak Park Middle School

1
AERIAL VIEW
SCALE: N.T.S.



INDEX OF DRAWINGS	
SHT. NO.	DESCRIPTION
SP-01	AERIAL
SP-02	SITE PLAN
B-01	BUILDING 01
B-02	BUILDING 02
B-03	BUILDING 04
B-04	BUILDING 05
B-05	BUILDING 06 & 08

REV	DATE	DESCRIPTION
A	11/02/2021	PRELIMINARY FISH PLAN
B		
0		
1		
2		
3		
4		
5		
6		

ARCHIS PROJECT NO.:
DRAWN BY: SH CHECKED BY: CB



CMI
158 Terra Mango Loop, Suite B,
Orlando, FL 32835
Main: (407) 293-4168

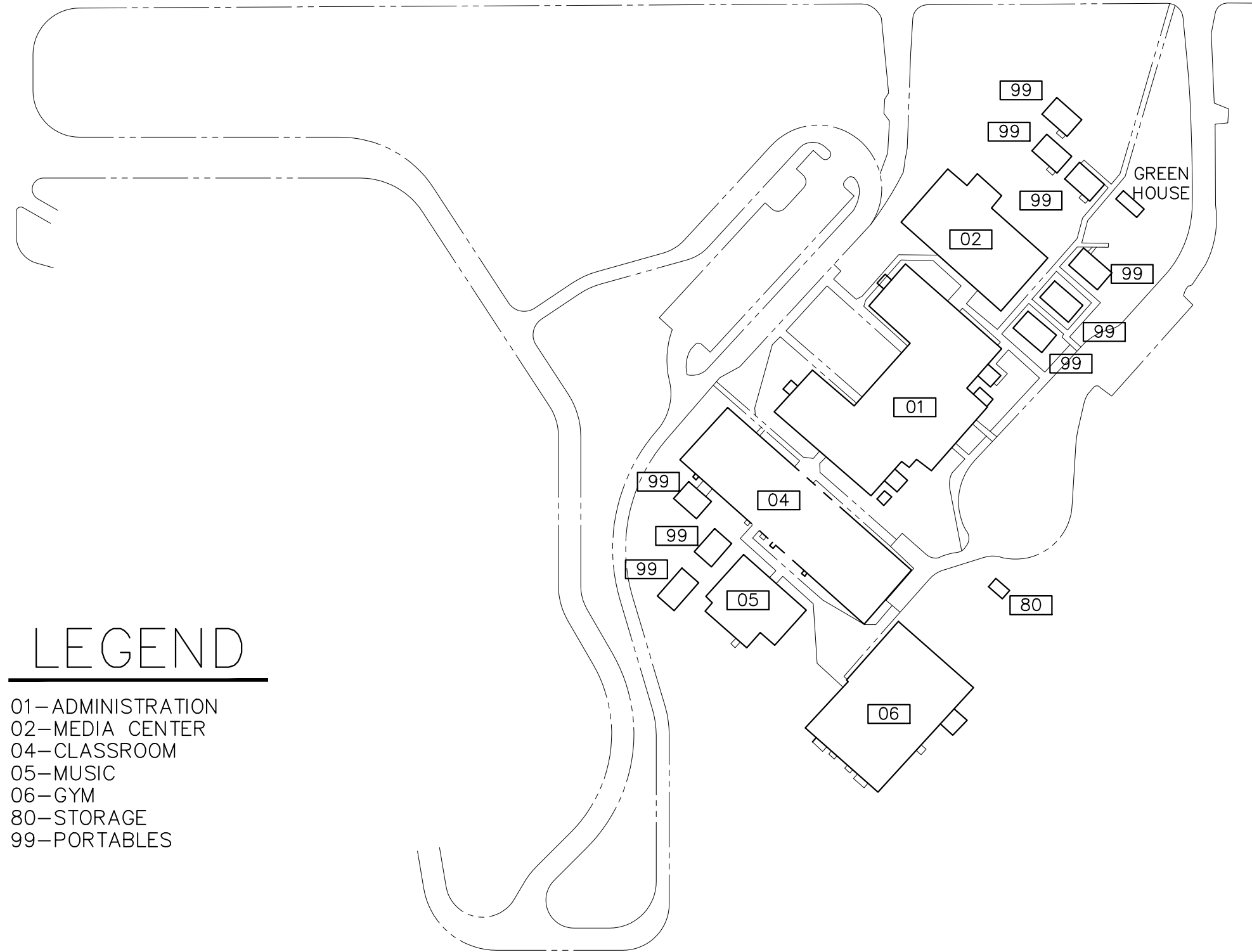
PREPARED BY:
ARCHIS
350 E. Crown Point Road, Suite 1100
Winter Garden, FL 34787
Main: 888.324.2557
Direct: 407.439.1594

DATE _____
_____, PE
FL PROFESSIONAL ENGINEER LIC. # _____

Oak Park Middle School (FISH PLAN)
2101 South St
Leesburg, FL 34748

SHEET DESCRIPTION
OVERALL SITE PLAN

SHEET NUMBER
SP-01



LEGEND

- 01- ADMINISTRATION
- 02- MEDIA CENTER
- 04- CLASSROOM
- 05- MUSIC
- 06- GYM
- 80- STORAGE
- 99- PORTABLES

REV	DATE	DESCRIPTION
A	11/02/2021	PRELIMINARY FISH PLAN
B		
0		
1		
2		
3		
4		
5		
6		

ARCHIS PROJECT NO.:
 DRAWN BY: SH CHECKED BY: CB



CMI
 158 Terra Mango Loop, Suite B,
 Orlando, FL 32835
 Main: (407) 293-4168

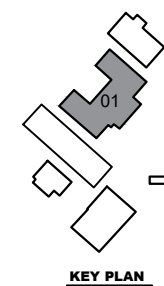
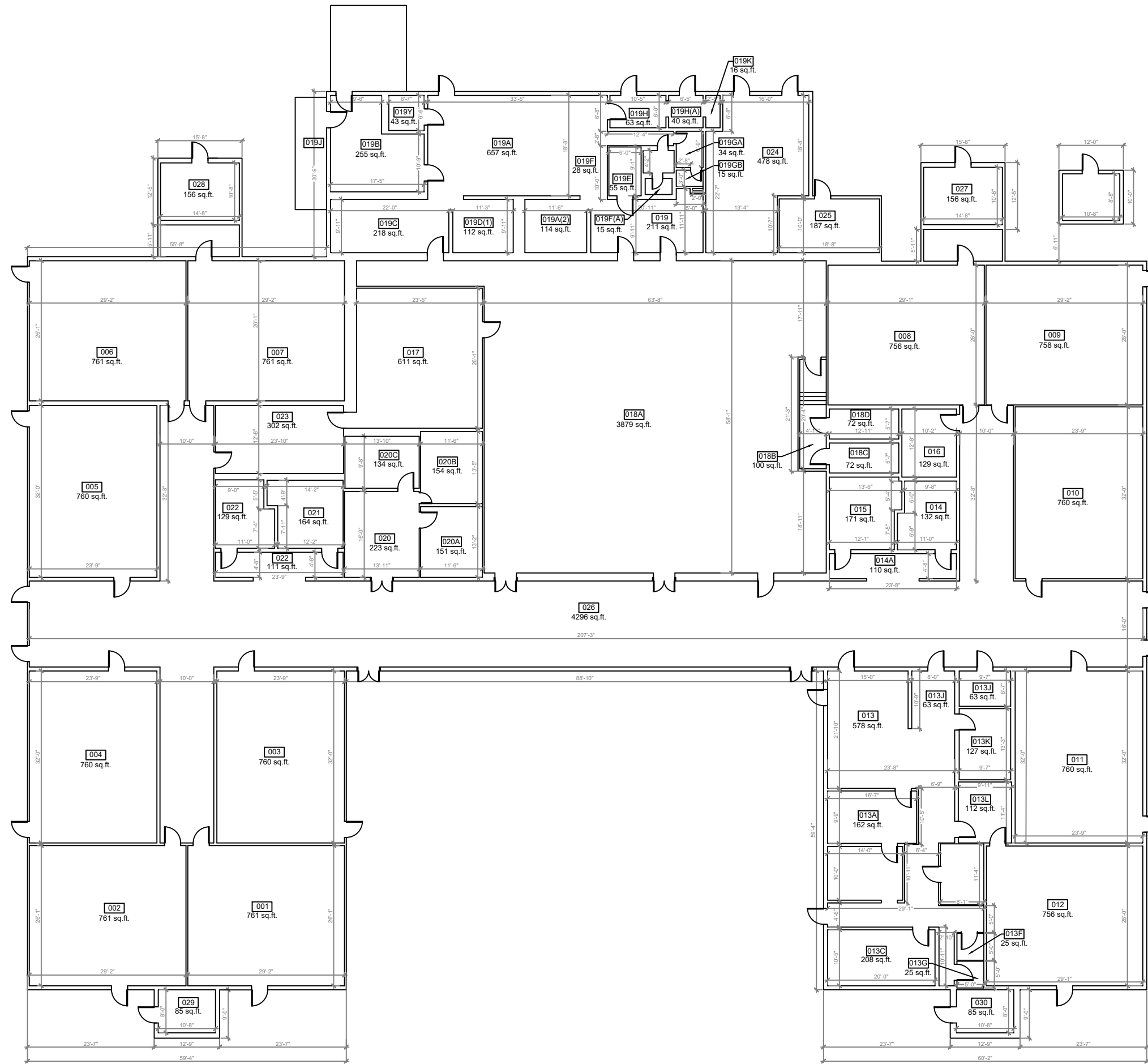
PREPARED BY:
ARCHIS
 350 E. Crown Point Road, Suite 1100
 Winter Garden, FL 34787
 Main: 888.324.2557
 Direct: 407.439.1594

DATE _____
 _____, PE
 FL PROFESSIONAL ENGINEER LIC. # _____

Oak Park Middle School (FISH PLAN)
 2101 South St
 Leesburg, FL 34748

SHEET DESCRIPTION
OVERALL SITE PLAN

SHEET NUMBER
SP-02



1 BUILDING 01 FLOOR PLAN
SCALE: 1/8"=1'-0"

REV	DATE	DESCRIPTION
A	11/02/2021	PRELIMINARY FISH PLAN
B		
0		
1		
2		
3		
4		
5		
6		

ARCHIS PROJECT NO.:
DRAWN BY: SH CHECKED BY: CB

158 Terra Mango Loop, Suite B,
Orlando, FL 32835
Main: (407) 293-4168

PREPARED BY:
ARCHIS
350 E. Crown Point Road, Suite 1100
Winter Garden, FL 34787
Main: 888.324.2557
Direct: 407.439.1594

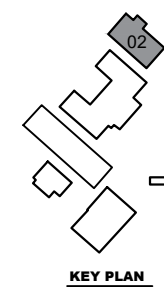
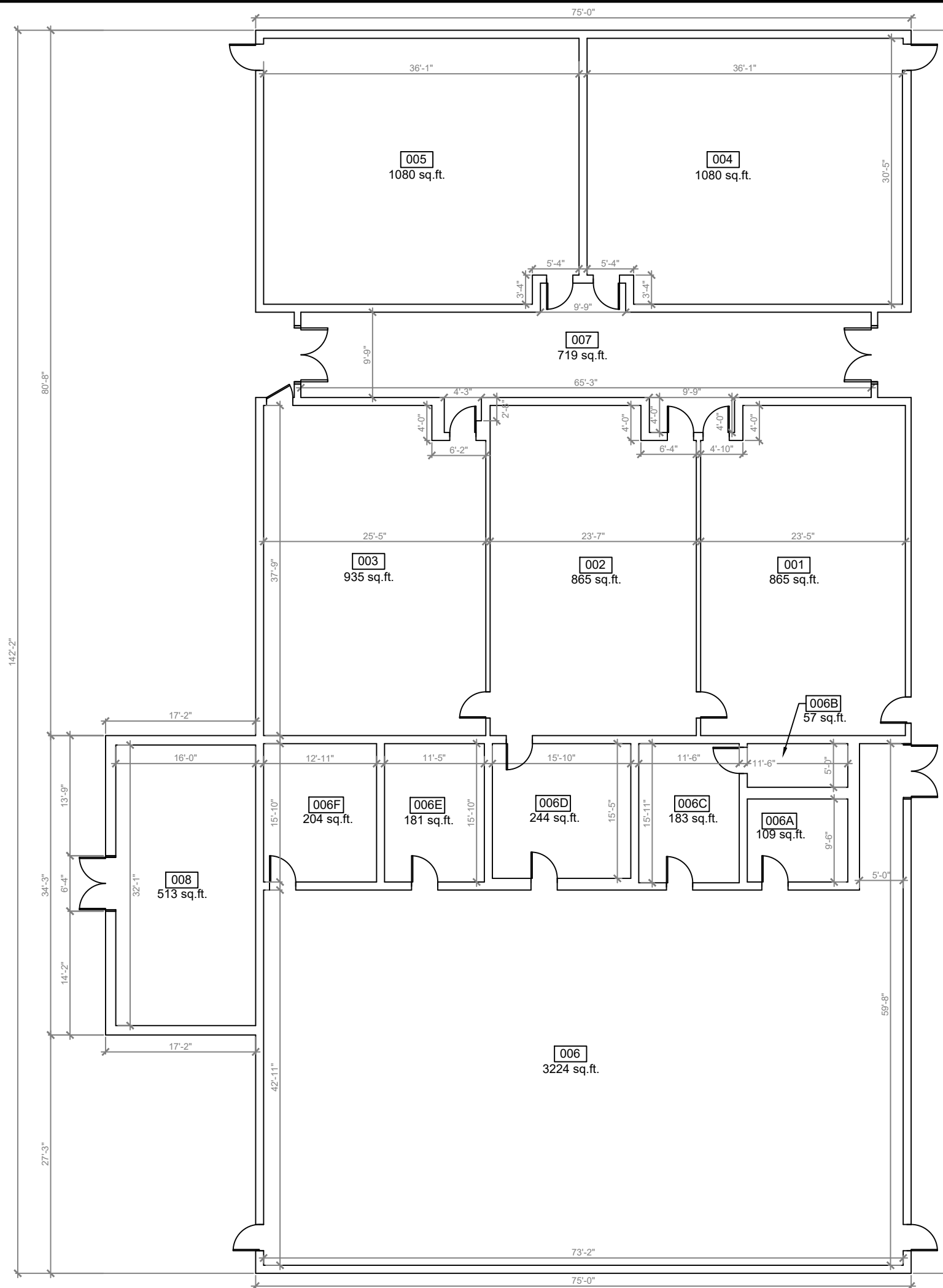
DATE _____
, PE
FL PROFESSIONAL ENGINEER LIC. # _____

Oak Park Middle School (FISH PLAN)
2101 South St
Leesburg, FL 34748

SHEET DESCRIPTION
BUILDING 01

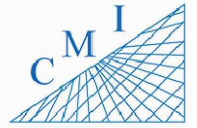
SHEET NUMBER
B-01

1
B-02 **BUILDING 02 FLOOR PLAN**
SCALE: 3/16"=1'-0"



REV	DATE	DESCRIPTION
A	11/02/2021	PRELIMINARY FISH PLAN
B		
0		
1		
2		
3		
4		
5		
6		

ARCHIS PROJECT NO.:
DRAWN BY: SH CHECKED BY: CB



158 Terra Mango Loop, Suite B,
Orlando, FL 32835
Main: (407) 293-4168

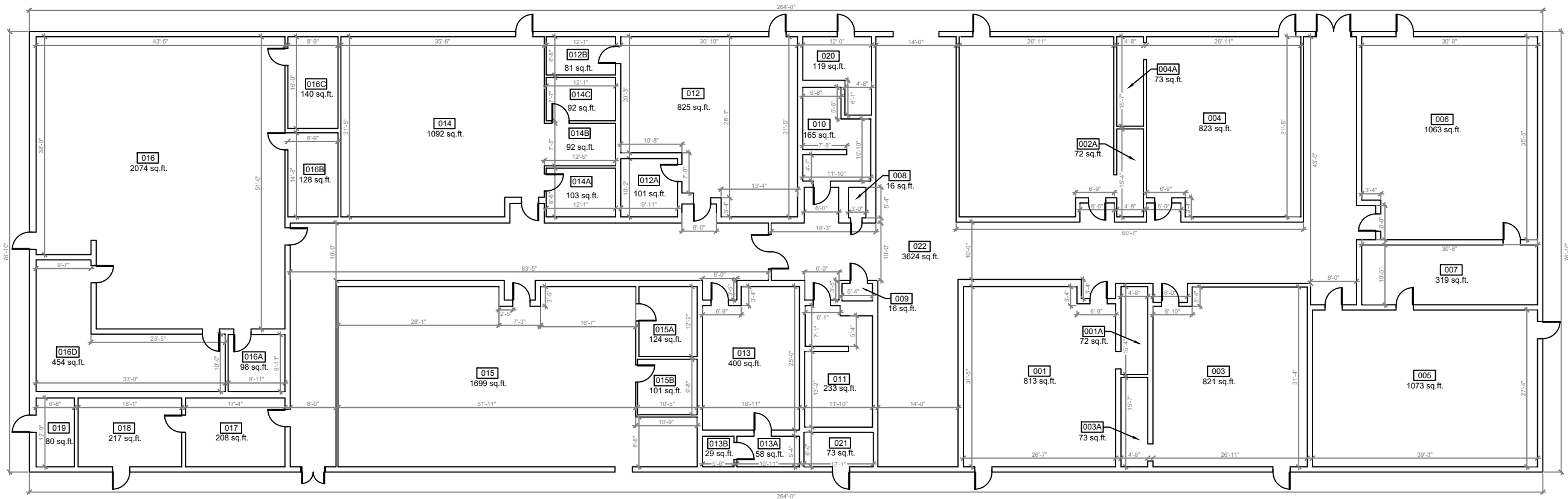
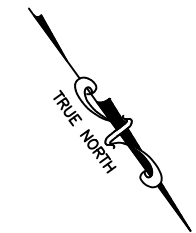
PREPARED BY:
ARCHIS
350 E. Crown Point Road, Suite 1100
Winter Garden, FL 34787
Main: 888.324.2557
Direct: 407.439.1594

DATE
, PE
FL PROFESSIONAL ENGINEER LIC. #

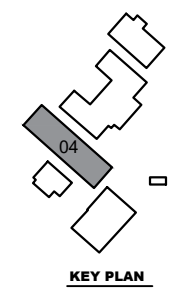
Oak Park Middle School (FISH PLAN)
2101 South St
Leesburg, FL 34748

SHEET DESCRIPTION
BUILDING 02

SHEET NUMBER
B-02

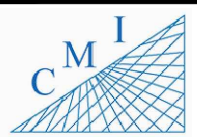


1
B-03 **BUILDING 04 FLOOR PLAN**
SCALE: 1/8"=1'-0"



REV	DATE	DESCRIPTION
A	11/02/2021	PRELIMINARY FISH PLAN
B		
0		
1		
2		
3		
4		
5		
6		

ARCHIS PROJECT NO.:
DRAWN BY: SH CHECKED BY: CB



158 Terra Mango Loop, Suite B,
Orlando, FL 32835
Main: (407) 293-4168

PREPARED BY:
ARCHIS
350 E. Crown Point Road, Suite 1100
Winter Garden, FL 34787
Main: 888.324.2557
Direct: 407.439.1594

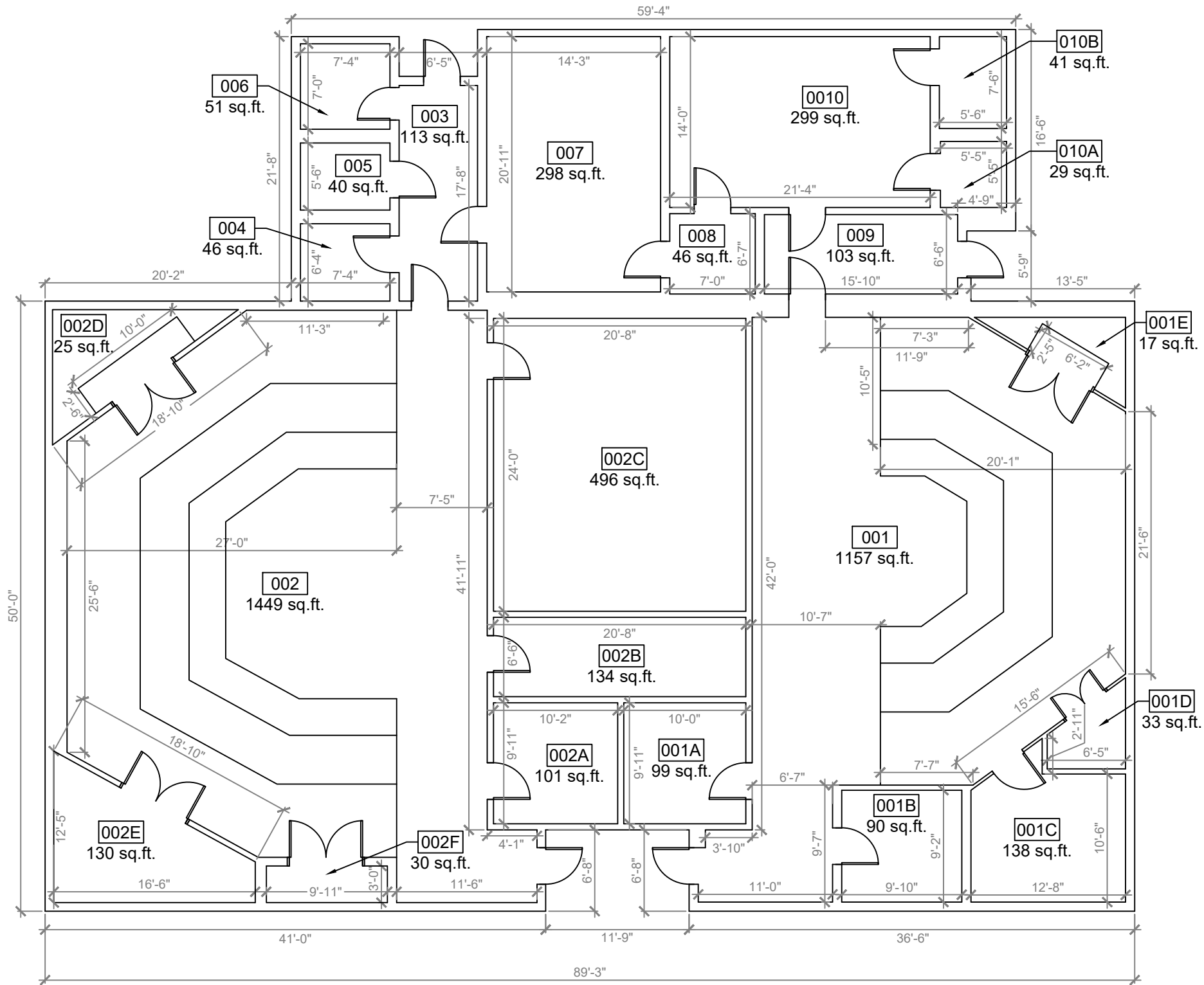
DATE
, PE
FL PROFESSIONAL ENGINEER LIC. #

Oak Park Middle School (FISH PLAN)
2101 South St
Leesburg, FL 34748

SHEET DESCRIPTION
BUILDING 04

SHEET NUMBER
B-03

ARCHIS TECHNOLOGIES - \\server-1\H\Archis\20-002 Oak Park Middle School\From ISP\11-02-2021\Oak Park Middle School.dwg February 11, 2021 20:31:19 PC20



REV	DATE	DESCRIPTION
A	11/02/2021	PRELIMINARY FISH PLAN
B		
0		
1		
2		
3		
4		
5		
6		

ARCHIS PROJECT NO.:
 DRAWN BY: SH
 CHECKED BY: CB



CM I
 158 Terra Mango Loop, Suite B,
 Orlando, FL 32835
 Main: (407) 293-4168

PREPARED BY:
ARCHIS
 350 E. Crown Point Road, Suite 1100
 Winter Garden, FL 34787
 Main: 888.324.2557
 Direct: 407.439.1594

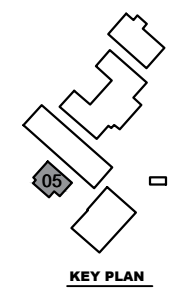
DATE _____
 _____, PE
 FL PROFESSIONAL ENGINEER LIC. # _____

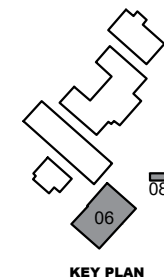
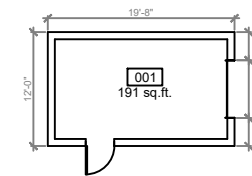
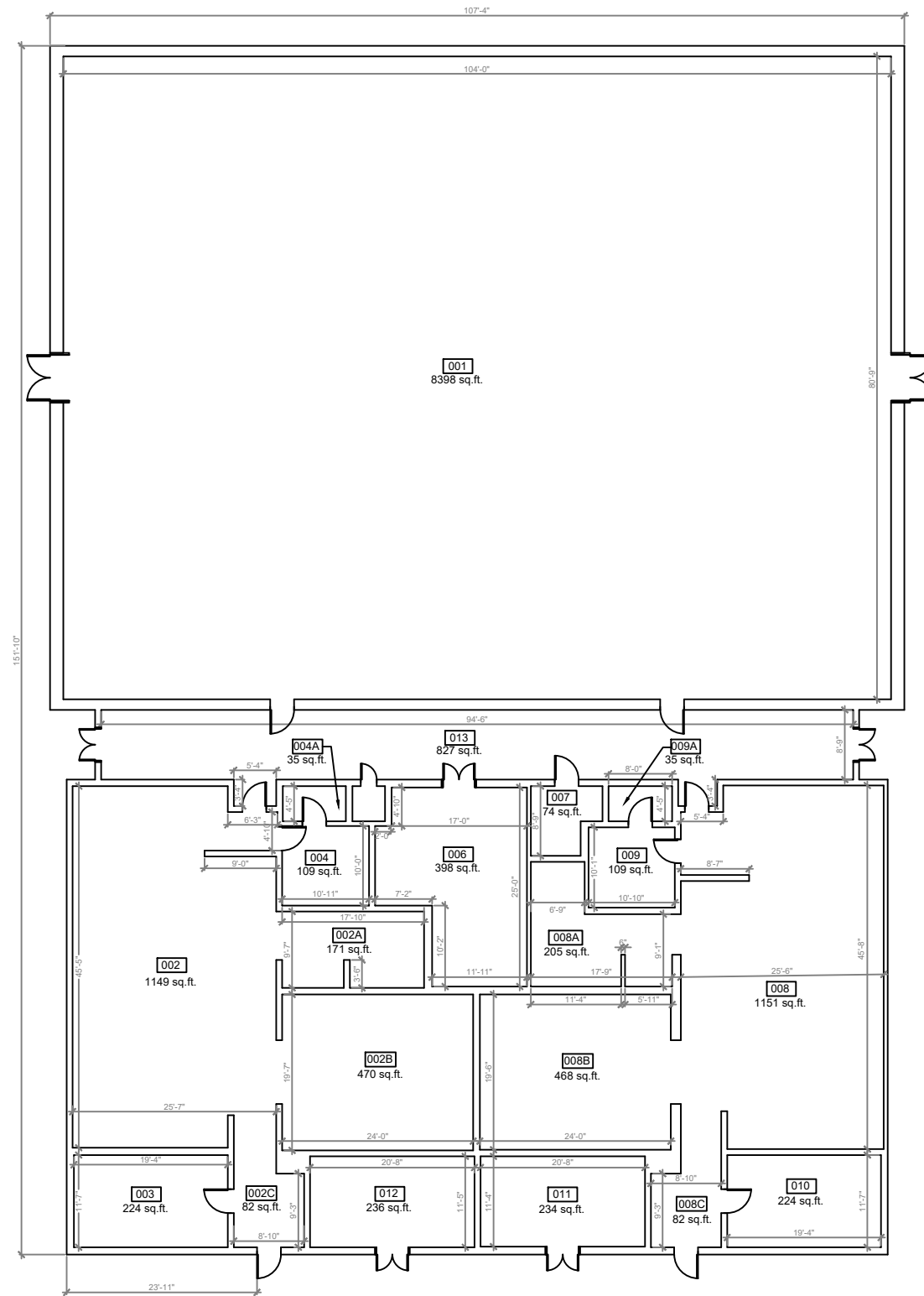
Oak Park Middle School (FISH PLAN)
 2101 South St
 Leesburg, FL 34748

SHEET DESCRIPTION
BUILDING 05

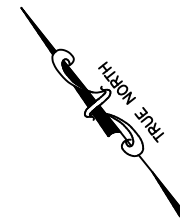
SHEET NUMBER
B-04

1 BUILDING 05 FLOOR PLAN
 B-04 SCALE: 1/4"=1'-0"





1
B-05 **BUILDING 06 & 08 FLOOR PLAN**
SCALE: 1/8"=1'-0"



REV	DATE	DESCRIPTION
A	11/02/2021	PRELIMINARY FISH PLAN
B		
0		
1		
2		
3		
4		
5		
6		

ARCHIS PROJECT NO.:
DRAWN BY: SH CHECKED BY: CB



CMI
158 Terra Mango Loop, Suite B,
Orlando, FL 32835
Main: (407) 293-4168

PREPARED BY:
ARCHIS
350 E. Crown Point Road, Suite 1100
Winter Garden, FL 34787
Main: 888.324.2557
Direct: 407.439.1594

DATE _____
, PE
FL PROFESSIONAL ENGINEER LIC. # _____

Oak Park Middle School (FISH PLAN)
2101 South St
Leesburg, FL 34748

SHEET DESCRIPTION
BUILDING 06 & 08

SHEET NUMBER
B-05