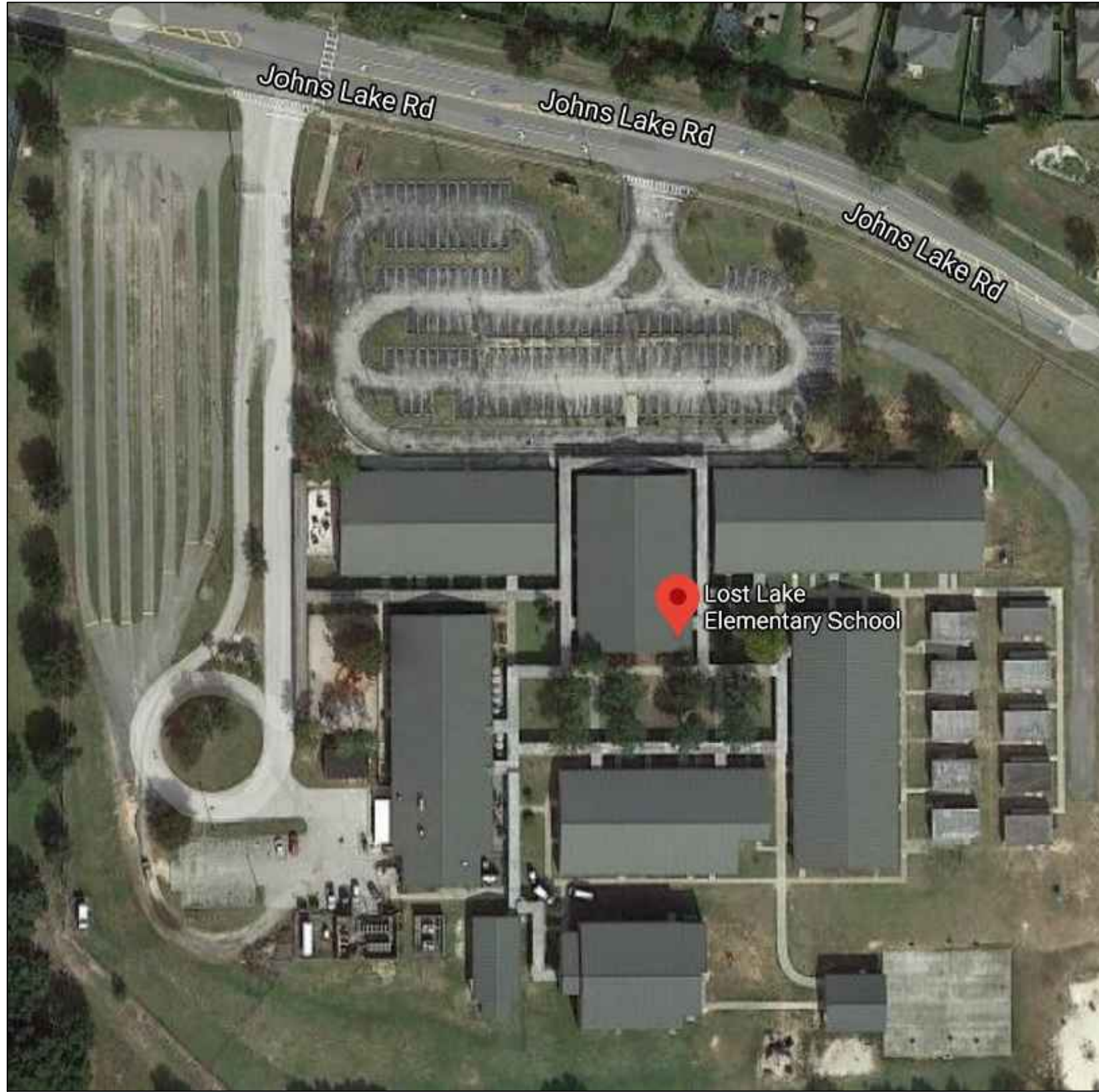


Lost Lake Elementary School

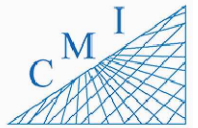


1
SP-01 **AERIAL VIEW**
SCALE: N.T.S.

| INDEX OF DRAWINGS | |
|-------------------|--------------------------|
| SHT. NO. | DESCRIPTION |
| SP-01 | AERIAL |
| SP-02 | SITE PLAN |
| B-01 | BUILDING 01 |
| B-02 | BUILDING 02 |
| B-03 | BUILDING 03 |
| B-04 | BUILDING 04 |
| B-05 | BUILDING 05 |
| B-06 | BUILDING 06 |
| B-07 | BUILDING 07 |
| B-08 | BUILDING 08 FIRST FLOOR |
| B-09 | BUILDING 08 SECOND FLOOR |

| REV | DATE | DESCRIPTION |
|-----|----------|-----------------------|
| A | 02/03/21 | PRELIMINARY FISH PLAN |
| B | | |
| 0 | | |
| 1 | | |
| 2 | | |
| 3 | | |
| 4 | | |
| 5 | | |
| 6 | | |

| | |
|---------------------|-------------|
| ARCHIS PROJECT NO.: | |
| DRAWN BY: | CHECKED BY: |
| VP | YP |



158 Terra Mango Loop, Suite B,
Orlando, FL 32835
Main: (407) 293-4168

PREPARED BY:



350 E. Crown Point Road, Suite 1100
Winter Garden, FL 34787
Main: 888.324.2557
Direct: 407.439.1594

DATE

, PE

FL PROFESSIONAL ENGINEER LIC. #

Lost Lake Elementary School

(FISH PLAN)

1901 Johns Lake Rd,
Clermont, FL

SHEET DESCRIPTION

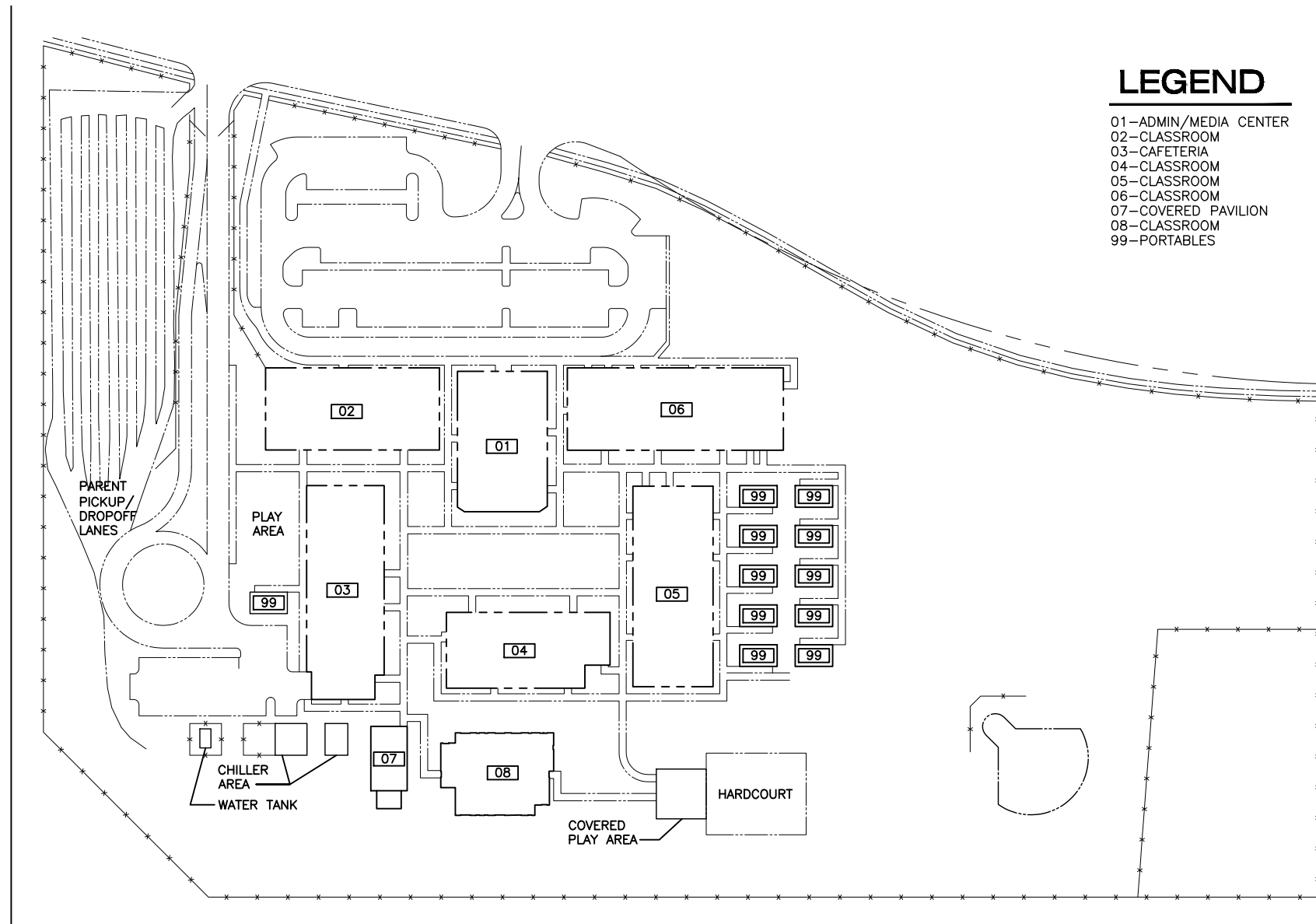
AERIAL VIEW

SHEET NUMBER

SP-01

\\server-1\H\Archis\21-016 Lost Lake ES\From ISP\08-02-2021\896_Lake County_Fish Survey Lost Lake ES.dwg February 8, 2021 23:43:02 PC20

ARCHIS TECHNOLOGIES - \\server-1\H\Archis\21-016 Lost Lake ES\From ISP\08-02-2021\896_Lake County_Fish Survey Lost Lake ES.dwg February 8, 2021 23:43:10 PC20



LEGEND

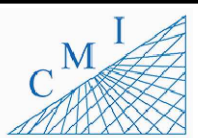
- 01 - ADMIN/MEDIA CENTER
- 02 - CLASSROOM
- 03 - CAFETERIA
- 04 - CLASSROOM
- 05 - CLASSROOM
- 06 - CLASSROOM
- 07 - COVERED PAVILION
- 08 - CLASSROOM
- 99 - PORTABLES



| REV | DATE | DESCRIPTION |
|-----|----------|-----------------------|
| A | 02/03/21 | PRELIMINARY FISH PLAN |
| B | | |
| 0 | | |
| 1 | | |
| 2 | | |
| 3 | | |
| 4 | | |
| 5 | | |
| 6 | | |

ARCHIS PROJECT NO.:

| | |
|-----------|-------------|
| DRAWN BY: | CHECKED BY: |
| VP | YP |



158 Terra Mango Loop, Suite B,
Orlando, FL 32835
Main: (407) 293-4168

PREPARED BY:



350 E. Crown Point Road, Suite 1100
Winter Garden, FL 34787
Main: 888.324.2557
Direct: 407.439.1594

DATE

, PE

FL PROFESSIONAL ENGINEER LIC. #

Lost Lake Elementary School

(FISH PLAN)

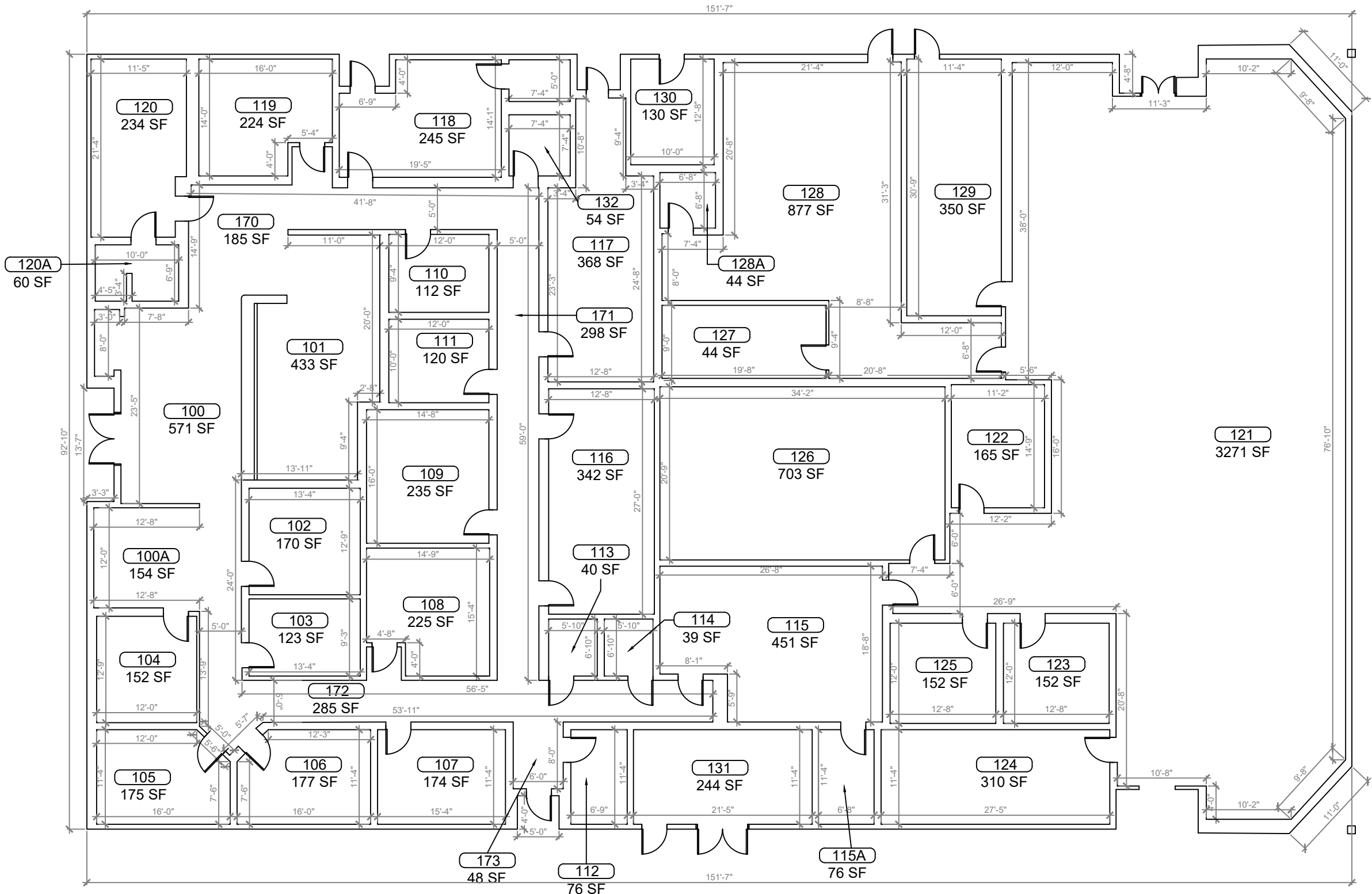
1901 Johns Lake Rd,
Clermont, FL

SHEET DESCRIPTION
OVERALL SITE PLAN

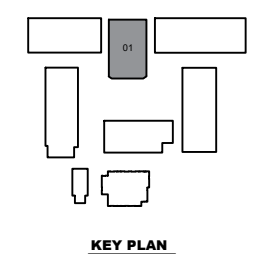
SHEET NUMBER
SP-02

1 OVERALL SITE PLAN
SP-02 SCALE: 1:64

ARCHIS TECHNOLOGIES - \\server-1\H\Archis\21-016 Lost Lake ES\From ISP\08-02-2021\896_Lake County_Fish Survey Lost Lake ES.dwg February 8, 2021 23:43:14 PC20



1 BUILDING 01 FLOOR PLAN
 SCALE: 3/16"=1'-0"



| REV | DATE | DESCRIPTION |
|-----|----------|-----------------------|
| A | 02/03/21 | PRELIMINARY FISH PLAN |
| B | | |
| 0 | | |
| 1 | | |
| 2 | | |
| 3 | | |
| 4 | | |
| 5 | | |
| 6 | | |

ARCHIS PROJECT NO.:

| | |
|-----------|-------------|
| DRAWN BY: | CHECKED BY: |
| VP | YP |



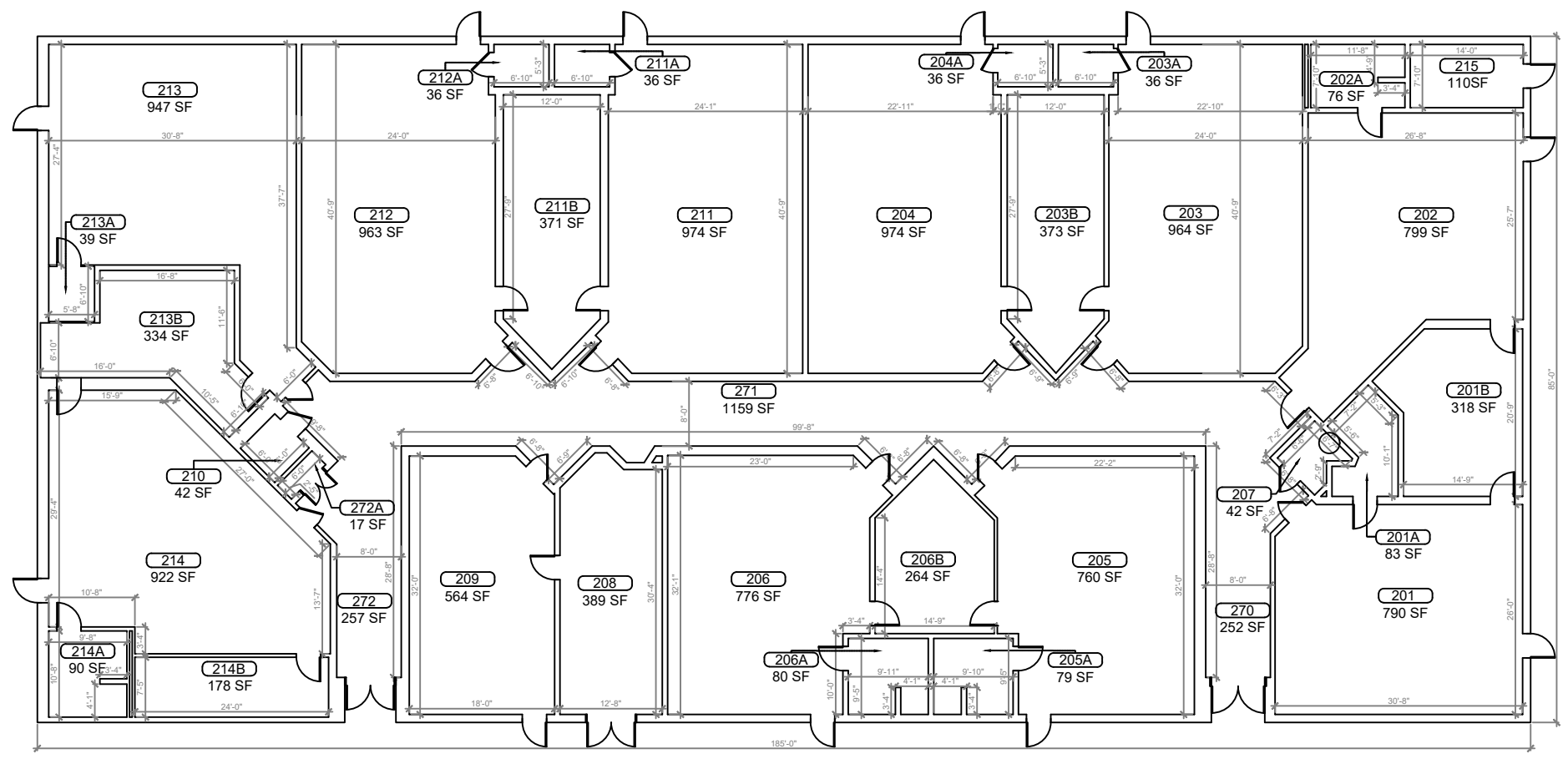
CMI
 158 Terra Mango Loop, Suite B,
 Orlando, FL 32835
 Main: (407) 293-4168

PREPARED BY:
ARCHIS
 350 E. Crown Point Road, Suite 1100
 Winter Garden, FL 34787
 Main: 888.324.2557
 Direct: 407.439.1594

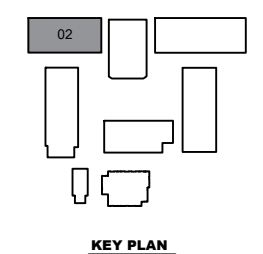
DATE _____
 _____, PE
 FL PROFESSIONAL ENGINEER LIC. # _____

Lost Lake Elementary School
(FISH PLAN)
 1901 Johns Lake Rd,
 Clermont, FL
 SHEET DESCRIPTION
BUILDING 01
 SHEET NUMBER
B-01

ARCHIS TECHNOLOGIES - \\server-1\H\Archis\21-016 Lost Lake ES\From ISP\08-02-2021\896_Lake County_Fish Survey Lost Lake ES.dwg February 8, 2021 23:43:19 PC20

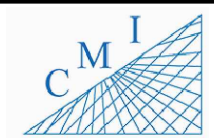


1
B-02 **BUILDING 02 FLOOR PLAN**
SCALE: 1/8"=1'-0"



| REV | DATE | DESCRIPTION |
|-----|----------|-----------------------|
| A | 02/03/21 | PRELIMINARY FISH PLAN |
| B | | |
| 0 | | |
| 1 | | |
| 2 | | |
| 3 | | |
| 4 | | |
| 5 | | |
| 6 | | |

| | |
|---------------------|-------------|
| ARCHIS PROJECT NO.: | |
| DRAWN BY: | CHECKED BY: |
| VP | YP |



158 Terra Mango Loop, Suite B,
Orlando, FL 32835
Main: (407) 293-4168

PREPARED BY:



350 E. Crown Point Road, Suite 1100
Winter Garden, FL 34787
Main: 888.324.2557
Direct: 407.439.1594

DATE

, PE

FL PROFESSIONAL ENGINEER LIC. #

Lost Lake Elementary School

(FISH PLAN)

1901 Johns Lake Rd,
Clermont, FL

SHEET DESCRIPTION

BUILDING 02

SHEET NUMBER

B-02

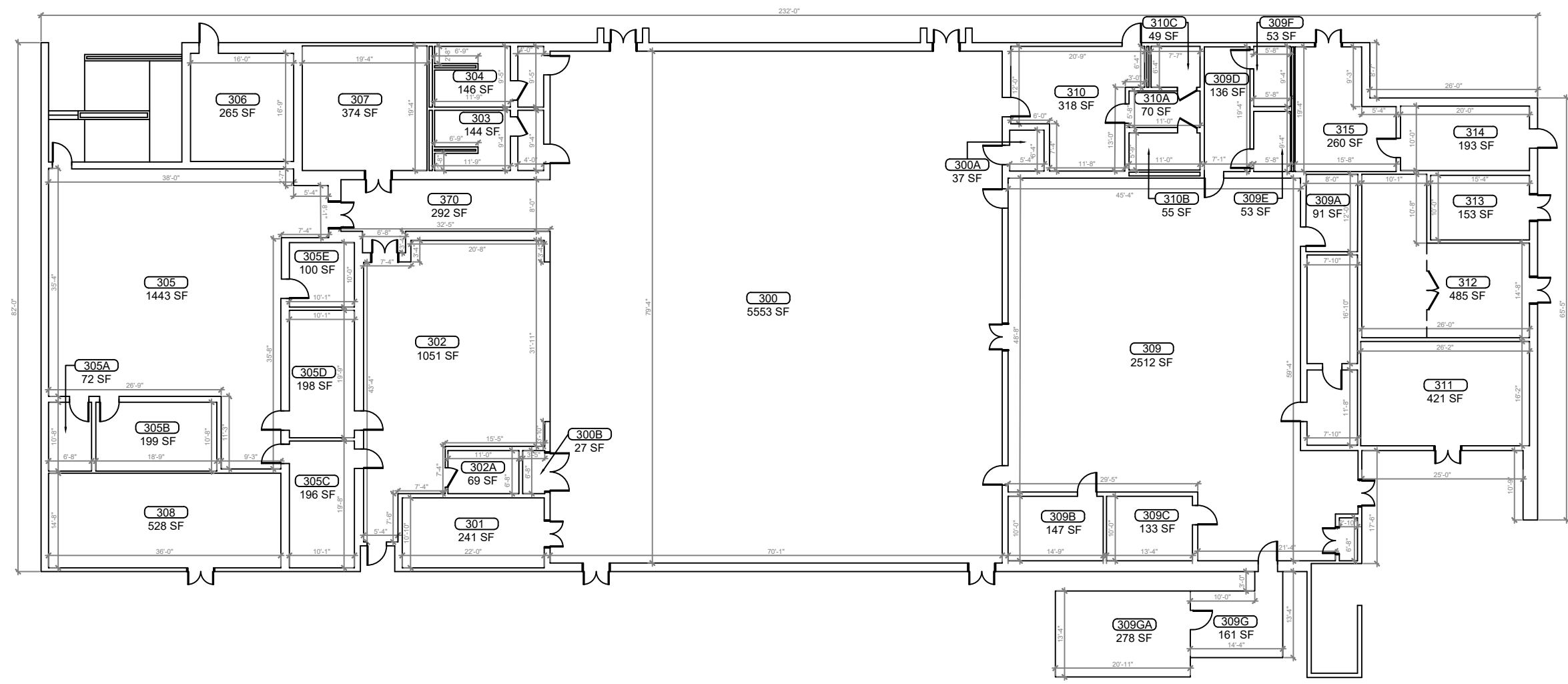
ARCHIS TECHNOLOGIES - \\server-1\H\Archis\21-016 Lost Lake ES\From ISP\08-02-2021\896_Lake County_Fish Survey Lost Lake ES.dwg February 8, 2021 23:43:24 PC20



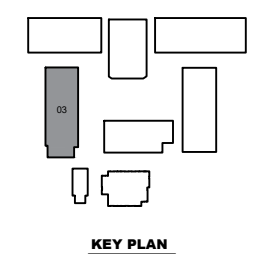
| REV | DATE | DESCRIPTION |
|-----|----------|-----------------------|
| A | 02/03/21 | PRELIMINARY FISH PLAN |
| B | | |
| 0 | | |
| 1 | | |
| 2 | | |
| 3 | | |
| 4 | | |
| 5 | | |
| 6 | | |

ARCHIS PROJECT NO.:

| | |
|-----------|-------------|
| DRAWN BY: | CHECKED BY: |
| VP | YP |



1 BUILDING 03 FLOOR PLAN
 B-03 SCALE: 1/8"=1'-0"



CMI
 158 Terra Mango Loop, Suite B,
 Orlando, FL 32835
 Main: (407) 293-4168

PREPARED BY:
ARCHIS
 350 E. Crown Point Road, Suite 1100
 Winter Garden, FL 34787
 Main: 888.324.2557
 Direct: 407.439.1594

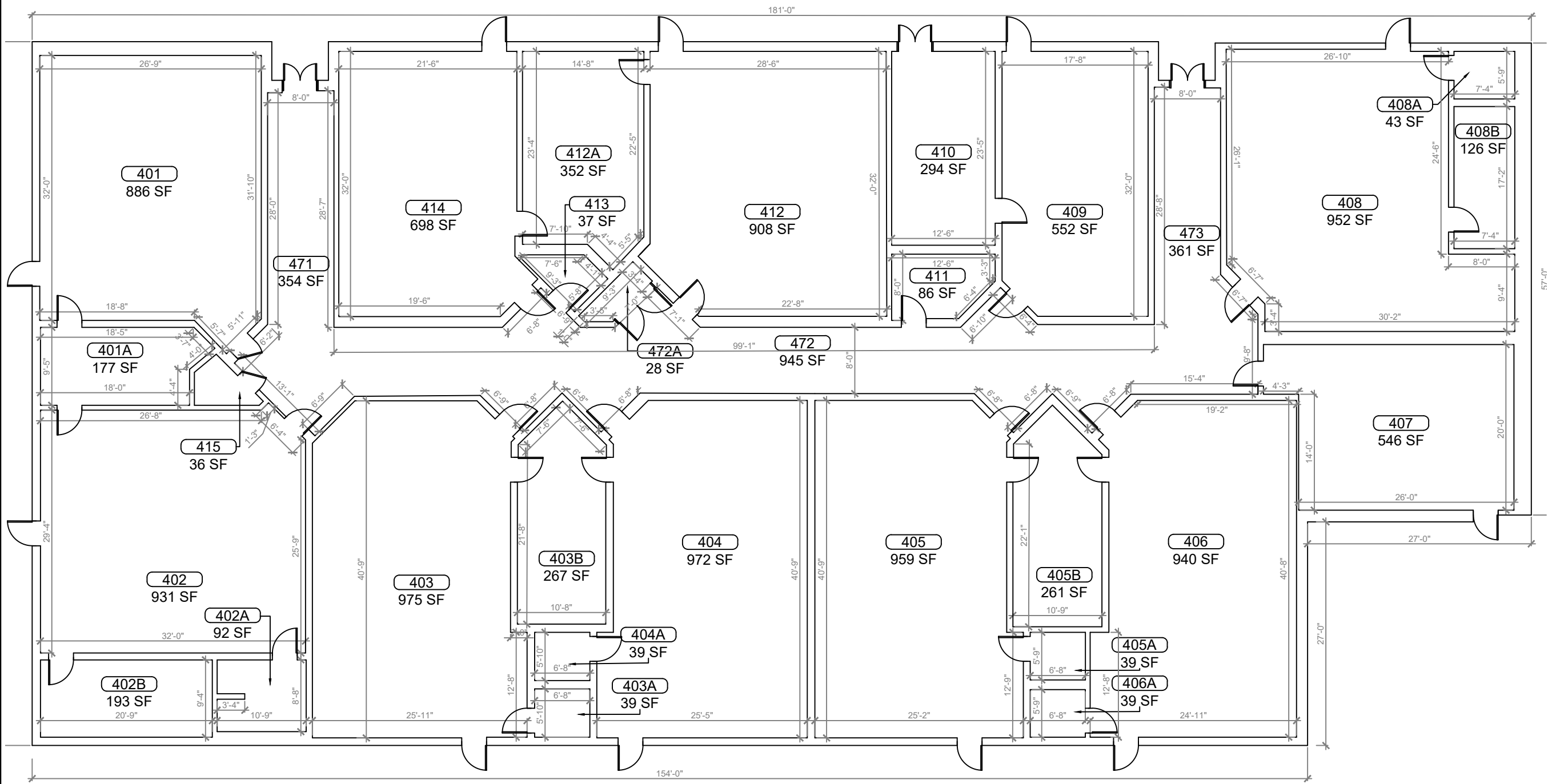
DATE _____
 _____, PE
 FL PROFESSIONAL ENGINEER LIC. # _____

Lost Lake Elementary School
(FISH PLAN)
 1901 Johns Lake Rd,
 Clermont, FL

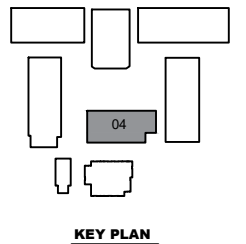
SHEET DESCRIPTION
BUILDING 03

SHEET NUMBER
B-03

ARCHIS TECHNOLOGIES - \\server-1\H\Archis\21-016 Lost Lake ES\From ISP\08-02-2021\896_Lake County_Fish Survey Lost Lake ES.dwg February 8, 2021 23:43:29 PC20



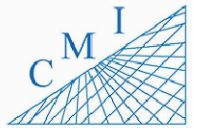
1
B-04 **BUILDING 04 FLOOR PLAN**
SCALE: 3/16"=1'-0"



| REV | DATE | DESCRIPTION |
|-----|----------|-----------------------|
| A | 02/03/21 | PRELIMINARY FISH PLAN |
| B | | |
| 0 | | |
| 1 | | |
| 2 | | |
| 3 | | |
| 4 | | |
| 5 | | |
| 6 | | |

ARCHIS PROJECT NO.:

| | |
|-----------|-------------|
| DRAWN BY: | CHECKED BY: |
| VP | YP |



158 Terra Mango Loop, Suite B,
Orlando, FL 32835
Main: (407) 293-4168

PREPARED BY:

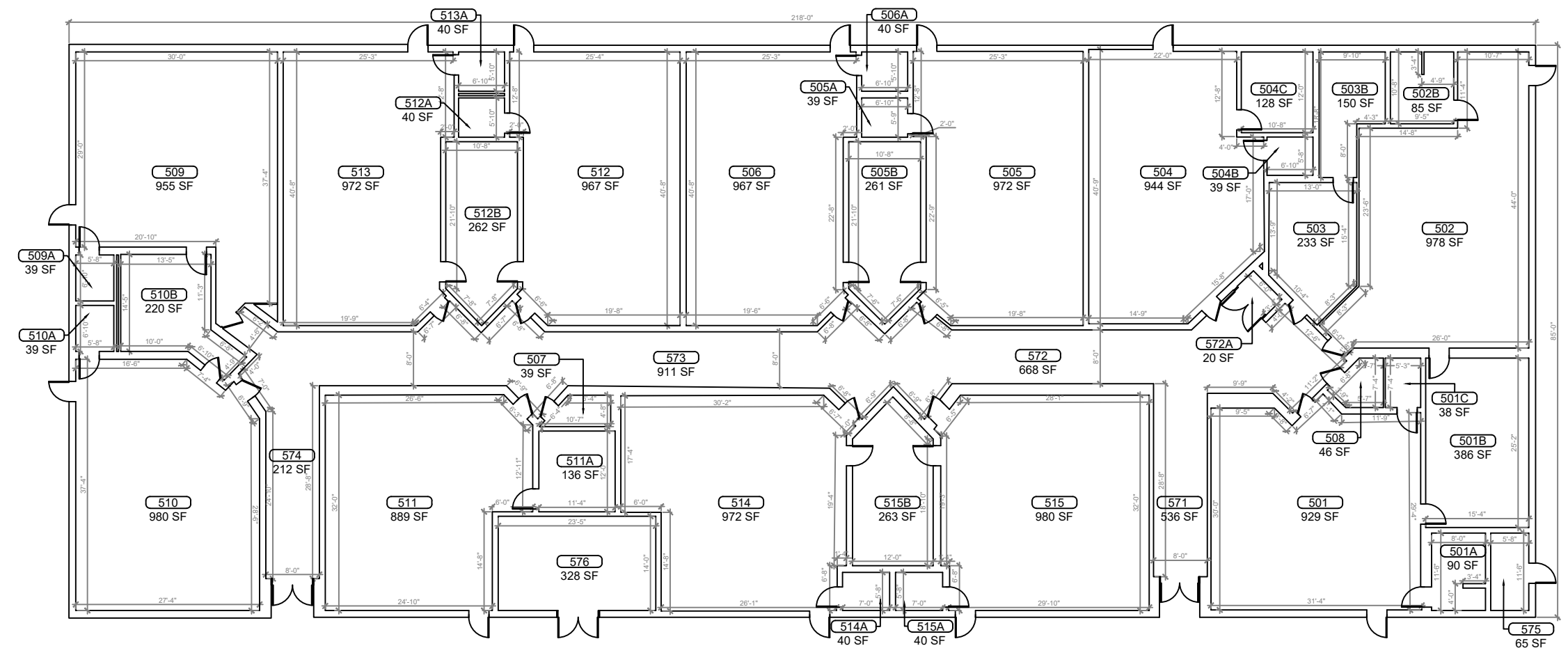
ARCHIS

350 E. Crown Point Road, Suite 1100
Winter Garden, FL 34787
Main: 888.324.2557
Direct: 407.439.1594

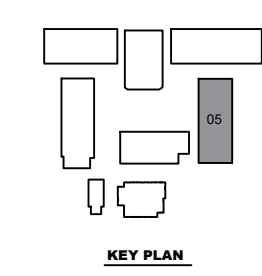
DATE _____
_____, PE
FL PROFESSIONAL ENGINEER LIC. # _____

Lost Lake Elementary School
(FISH PLAN)
1901 Johns Lake Rd,
Clermont, FL
SHEET DESCRIPTION
BUILDING 04
SHEET NUMBER
B-04

ARCHIS TECHNOLOGIES - \\server-1\H\Archis\21-016 Lost Lake ES\From ISP\08-02-2021\896_Lake County_Fish Survey Lost Lake ES.dwg February 8, 2021 23:43:34 PC20



1
B-05 **BUILDING 05 FLOOR PLAN**
SCALE: 1/8"=1'-0"



| REV | DATE | DESCRIPTION |
|-----|----------|-----------------------|
| A | 02/03/21 | PRELIMINARY FISH PLAN |
| B | | |
| 0 | | |
| 1 | | |
| 2 | | |
| 3 | | |
| 4 | | |
| 5 | | |
| 6 | | |

ARCHIS PROJECT NO.:

| | |
|-----------|-------------|
| DRAWN BY: | CHECKED BY: |
| VP | YP |



CMI
158 Terra Mango Loop, Suite B,
Orlando, FL 32835
Main: (407) 293-4168

PREPARED BY:
ARCHIS
350 E. Crown Point Road, Suite 1100
Winter Garden, FL 34787
Main: 888.324.2557
Direct: 407.439.1594

DATE
, PE
FL PROFESSIONAL ENGINEER LIC. #

Lost Lake Elementary School
(FISH PLAN)
1901 Johns Lake Rd,
Clermont, FL

SHEET DESCRIPTION
BUILDING 05
SHEET NUMBER
B-05

\\server-1\H\Archis\21-016 Lost Lake ES\From ISP\08-02-2021\896_Lake County_Fish Survey Lost Lake ES.dwg February 8, 2021 23:43:39 PC20



| REV | DATE | DESCRIPTION |
|-----|----------|-----------------------|
| A | 02/03/21 | PRELIMINARY FISH PLAN |
| B | | |
| 0 | | |
| 1 | | |
| 2 | | |
| 3 | | |
| 4 | | |
| 5 | | |
| 6 | | |

ARCHIS PROJECT NO.:
 DRAWN BY: VP
 CHECKED BY: YP



CMI
 158 Terra Mango Loop, Suite B,
 Orlando, FL 32835
 Main: (407) 293-4168

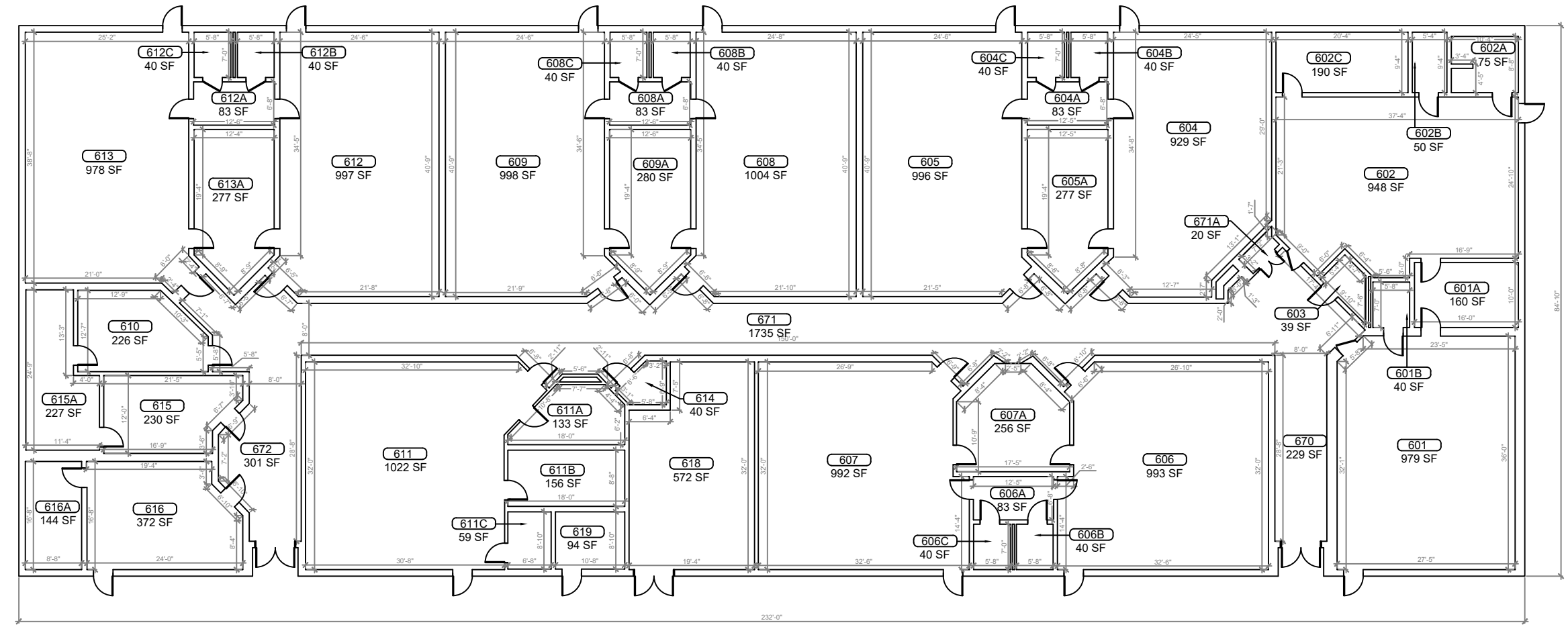
PREPARED BY:
ARCHIS
 350 E. Crown Point Road, Suite 1100
 Winter Garden, FL 34787
 Main: 888.324.2557
 Direct: 407.439.1594

DATE
 , PE
 FL PROFESSIONAL ENGINEER LIC. #

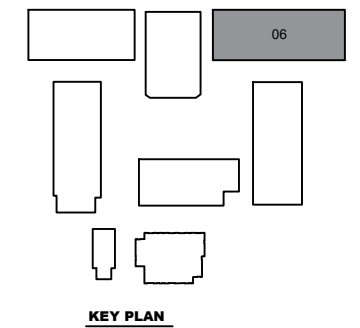
Lost Lake Elementary School
(FISH PLAN)
 1901 Johns Lake Rd,
 Clermont, FL

SHEET DESCRIPTION
BUILDING 06

SHEET NUMBER
B-06

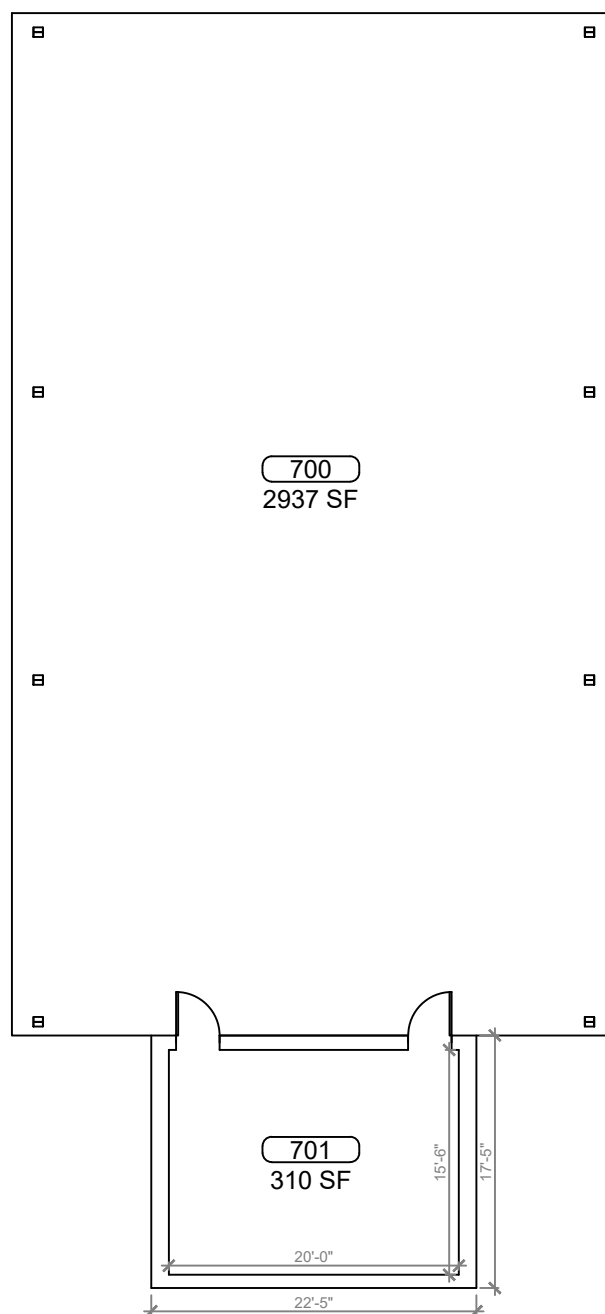


1 BUILDING 06 FLOOR PLAN
 B-06 SCALE: 1/8"=1'-0"



KEY PLAN

ARCHIS TECHNOLOGIES - \\server-1\H\Archis\21-016 Lost Lake ES\From ISP\08-02-2021\896_Lake County_Fish Survey Lost Lake ES.dwg February 8, 2021 23:43:44 PC20



| REV | DATE | DESCRIPTION |
|-----|----------|-----------------------|
| A | 02/03/21 | PRELIMINARY FISH PLAN |
| B | | |
| 0 | | |
| 1 | | |
| 2 | | |
| 3 | | |
| 4 | | |
| 5 | | |
| 6 | | |

| | |
|---------------------|-------------|
| ARCHIS PROJECT NO.: | |
| DRAWN BY: | CHECKED BY: |
| VP | YP |



PREPARED BY:



350 E. Crown Point Road, Suite 1100
Winter Garden, FL 34787
Main: 888.324.2557
Direct: 407.439.1594

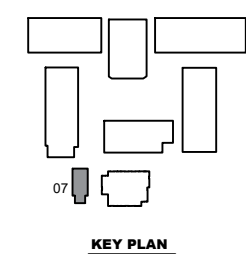
DATE _____
_____, PE
FL PROFESSIONAL ENGINEER LIC. # _____

Lost Lake Elementary School
(FISH PLAN)
1901 Johns Lake Rd,
Clermont, FL

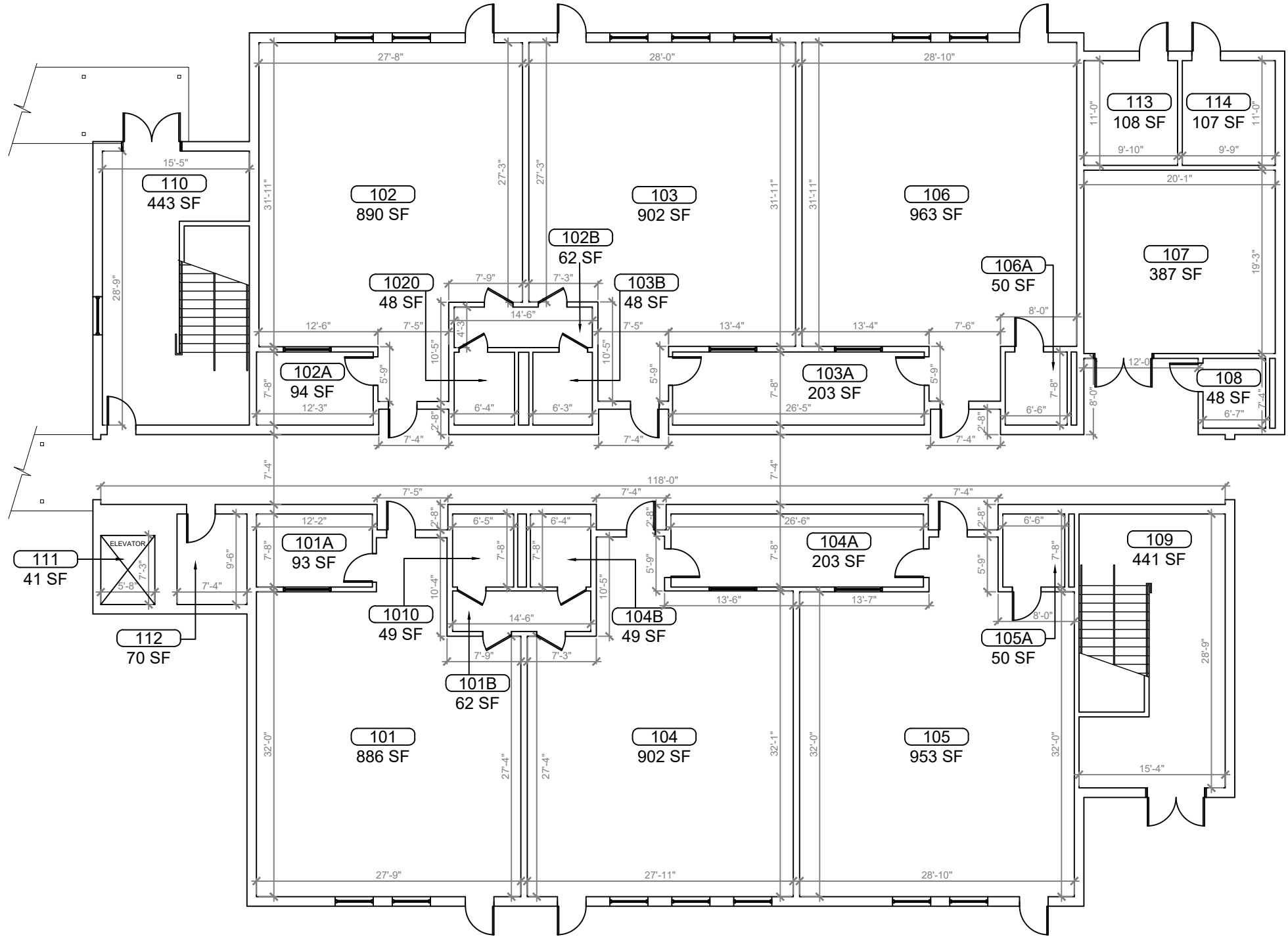
SHEET DESCRIPTION
BUILDING 07

SHEET NUMBER
B-07

BUILDING 07 FLOOR PLAN
SCALE: 3/16"=1'-0"

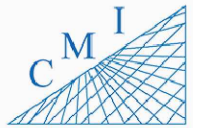


ARCHIS TECHNOLOGIES - \\server-1\H\Archis\21-016 Lost Lake ES\From ISP\08-02-2021\896_Lake County_Fish Survey Lost Lake ES.dwg February 8, 2021 23:43:49 PC20



| REV | DATE | DESCRIPTION |
|-----|----------|-----------------------|
| A | 02/03/21 | PRELIMINARY FISH PLAN |
| B | | |
| 0 | | |
| 1 | | |
| 2 | | |
| 3 | | |
| 4 | | |
| 5 | | |
| 6 | | |

ARCHIS PROJECT NO.:
 DRAWN BY: VP
 CHECKED BY: YP



158 Terra Mango Loop, Suite B,
 Orlando, FL 32835
 Main: (407) 293-4168

PREPARED BY:
ARCHIS
 350 E. Crown Point Road, Suite 1100
 Winter Garden, FL 34787
 Main: 888.324.2557
 Direct: 407.439.1594

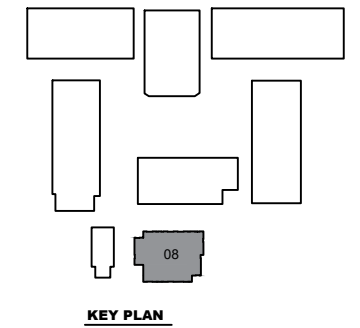
DATE
 , PE
 FL PROFESSIONAL ENGINEER LIC. #

Lost Lake Elementary School
(FISH PLAN)
 1901 Johns Lake Rd,
 Clermont, FL

SHEET DESCRIPTION
BUILDING 08

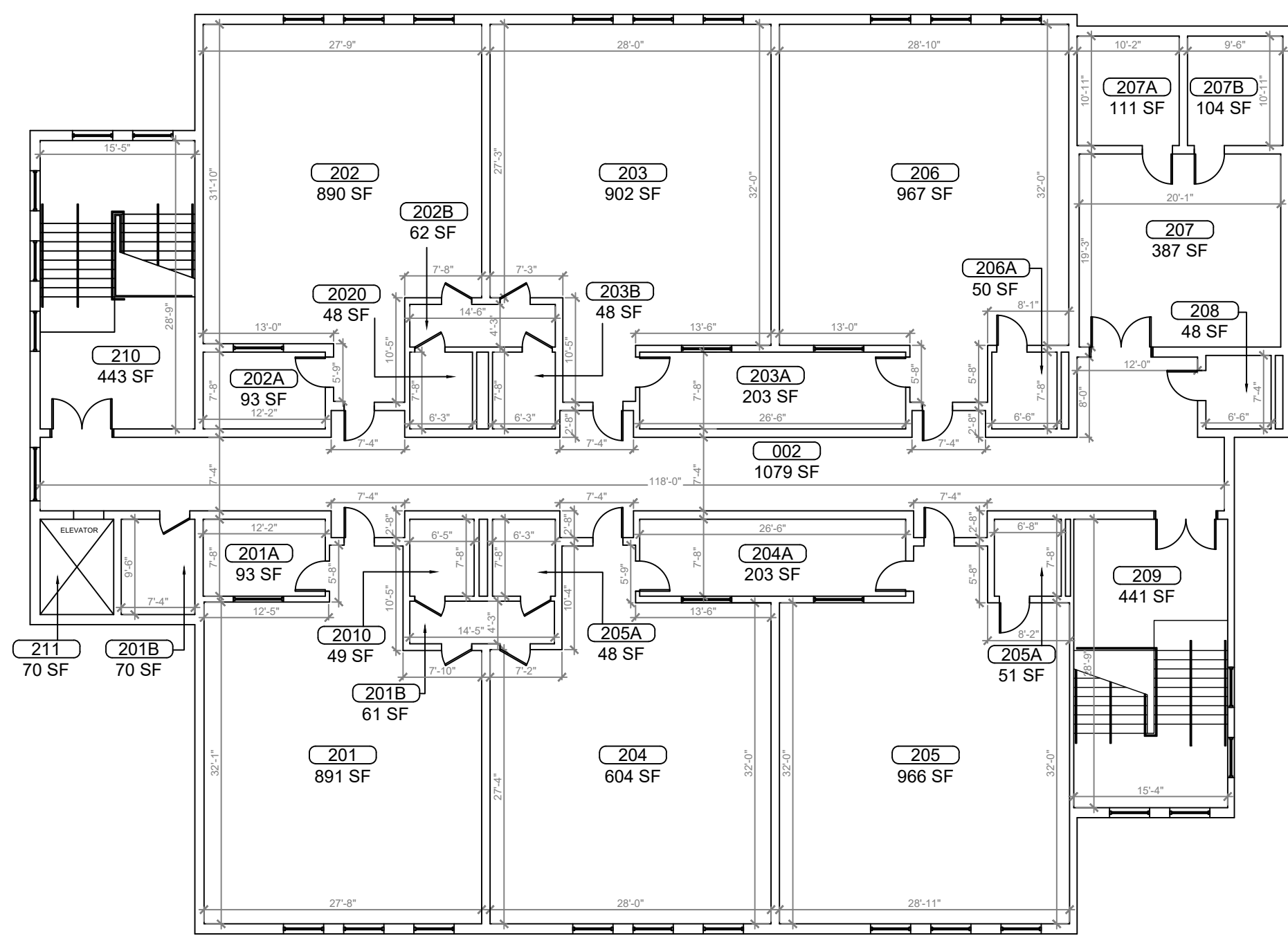
SHEET NUMBER
B-08.1

1
BUILDING 08 FIRST FLOOR PLAN
 8-08.1 SCALE: 3/16"=1'-0"

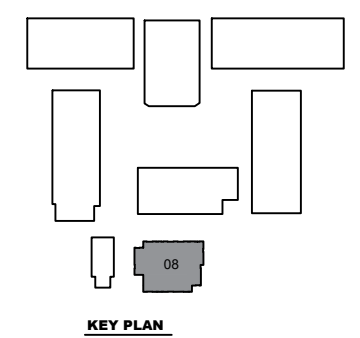


KEY PLAN

ARCHIS TECHNOLOGIES - \\server-1\H\Archis\21-016 Lost Lake ES\From ISP\08-02-2021\896_Lake County_Fish Survey Lost Lake ES.dwg February 8, 2021 23:43:54 PC20



1 **BUILDING 08 SECOND FLOOR PLAN**
 8-08.2 SCALE: 3/16"=1'-0"



| REV | DATE | DESCRIPTION |
|-----|----------|-----------------------|
| A | 02/03/21 | PRELIMINARY FISH PLAN |
| B | | |
| 0 | | |
| 1 | | |
| 2 | | |
| 3 | | |
| 4 | | |
| 5 | | |
| 6 | | |

ARCHIS PROJECT NO.:
 DRAWN BY: VP
 CHECKED BY: YP



CMI
 158 Terra Mango Loop, Suite B,
 Orlando, FL 32835
 Main: (407) 293-4168

PREPARED BY:
ARCHIS
 350 E. Crown Point Road, Suite 1100
 Winter Garden, FL 34787
 Main: 888.324.2557
 Direct: 407.439.1594

DATE
 , PE
 FL PROFESSIONAL ENGINEER LIC. #

Lost Lake Elementary School
(FISH PLAN)
 1901 Johns Lake Rd,
 Clermont, FL
 SHEET DESCRIPTION
BUILDING 08
 SHEET NUMBER
B-08.2