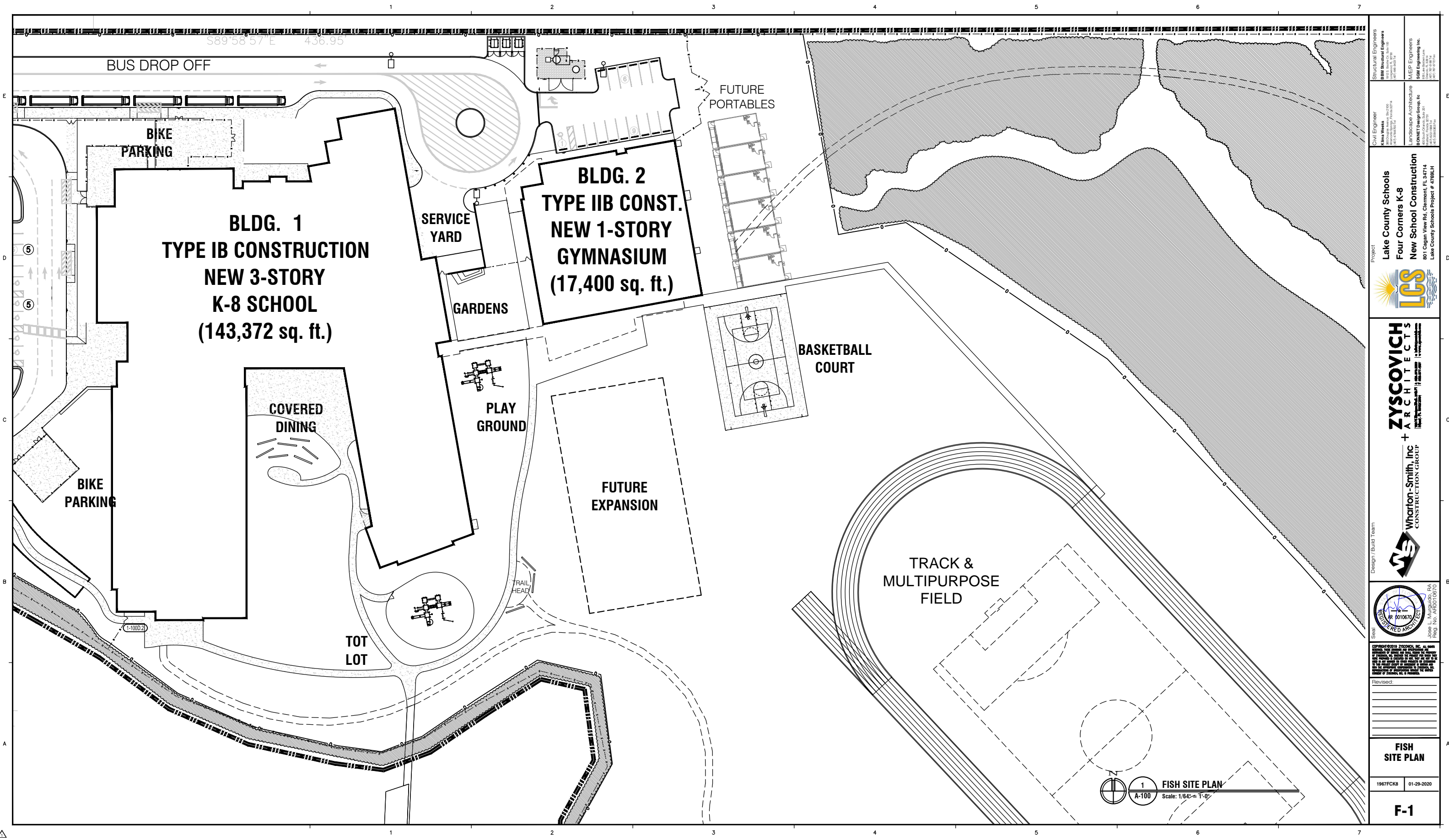


<p>Structural Engineers BIM Structural Engineers 1001 S. Orange Ave., Suite 100 Orlando, FL 32801 407.253.1111</p>	<p>M/E/P Engineers M/E/P Engineers 1001 S. Orange Ave., Suite 100 Orlando, FL 32801 407.253.1111</p>
<p>Civil Engineer Kiana Weeks 1001 S. Orange Ave., Suite 100 Orlando, FL 32801 407.253.1111</p>	<p>Landscape Architecture Landscape Architecture 1001 S. Orange Ave., Suite 100 Orlando, FL 32801 407.253.1111</p>
<p>Project: Lake County Schools Four Corners K-8 New School Construction 801 Capra View Rd, Clermont, FL 34714 Lake County Schools Project # 472941-H</p>	
<p>YSCOVICH + ARCHITECTS Wharton-Smith, Inc. CONSTRUCTION GROUP</p>	
<p>Design/Build Team Wharton-Smith, Inc. CONSTRUCTION GROUP</p>	
<p>Seal: Professional Engineer Jose L. Murguideo, P.E. Reg. No. AR0010670</p>	
<p>Revised:</p>	
<p>FISH SITE PLAN</p>	
<p>1967FCK8 01-29-2020</p>	
<p>F-1</p>	

1 FISH SITE PLAN
Scale: 1/64" = 1'-0"



S89°58'57"E 436.95'

BUS DROP OFF

BIKE PARKING

BLDG. 1
TYPE IB CONSTRUCTION
NEW 3-STORY
K-8 SCHOOL
(143,372 sq. ft.)

SERVICE YARD

BLDG. 2
TYPE IIB CONST.
NEW 1-STORY
GYMNASIUM
(17,400 sq. ft.)

FUTURE PORTABLES

GARDENS

PLAY GROUND

BASKETBALL COURT

FUTURE EXPANSION

COVERED DINING

BIKE PARKING

TOT LOT

TRACK & MULTIPURPOSE FIELD

1
 A-100
 FISH SITE PLAN
 Scale: 1/64" = 1'-0"

Structural Engineers
BSM Structural Engineers
 1001 S. Orange Ave., Suite 100
 Orlando, FL 32801
 (407) 253-1111

Civil Engineer
Kelvin Weeks
 1001 S. Orange Ave., Suite 100
 Orlando, FL 32801
 (407) 253-1111

MEP Engineers
MIEP Engineers
 1001 S. Orange Ave., Suite 100
 Orlando, FL 32801
 (407) 253-1111

Landscaper Architecture
Landscaper Architecture
 1001 S. Orange Ave., Suite 100
 Orlando, FL 32801
 (407) 253-1111

Project
Lake County Schools
Four Corners K-8
New School Construction
 801 Cogan View Rd., Clermont, FL 34714
 Lake County Schools Project # 479241-H

ZYSCOVICH
 + ARCHITECTS
 Whariton-Smith, Inc.
 CONSTRUCTION GROUP

Design / Build Team
WS

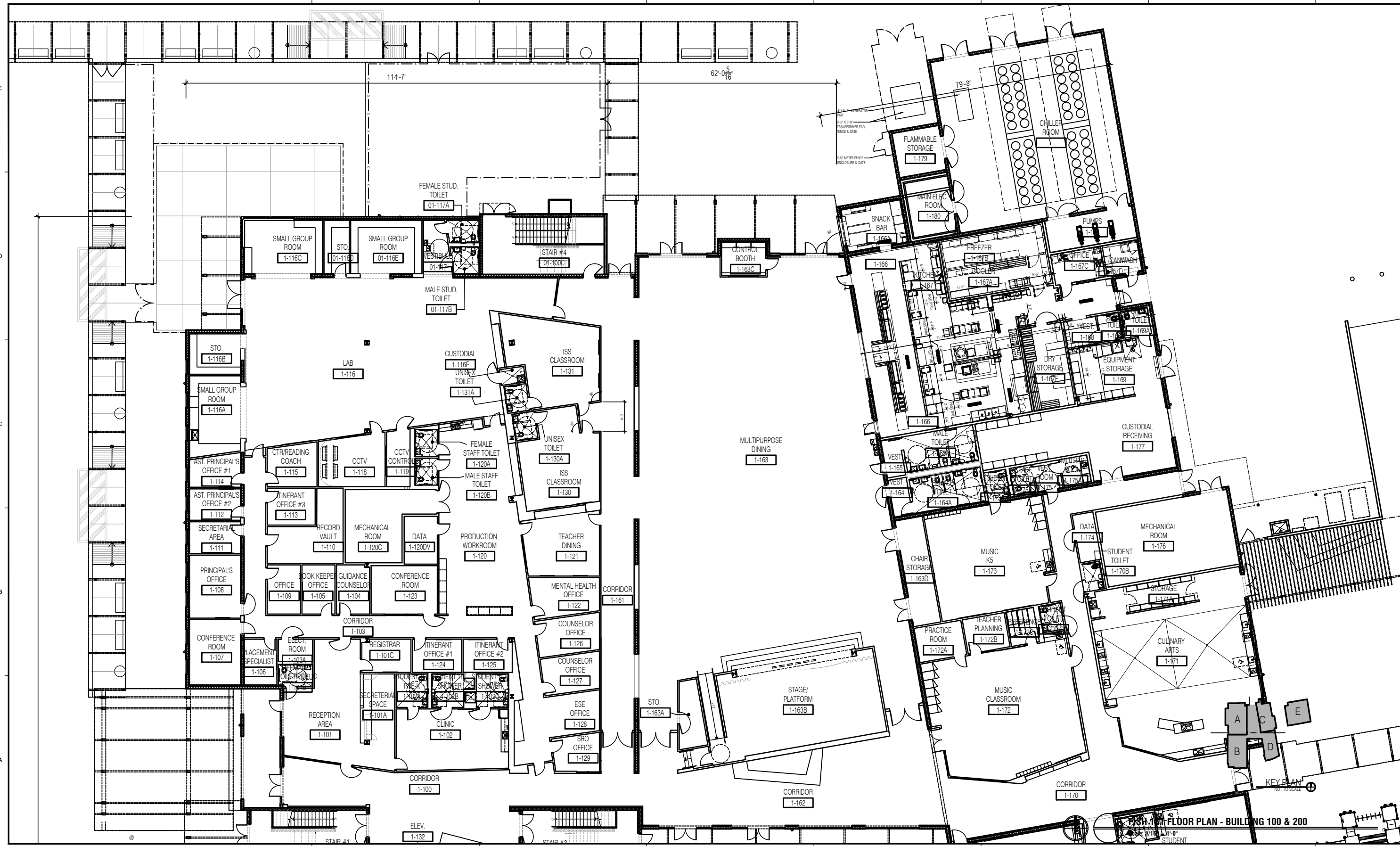
Seal
 REGISTERED ARCHITECT
 Jose L. Murguideo, P.A.
 No. AR0010670
 Reg. No. AR0010670

Revised:

FISH SITE PLAN

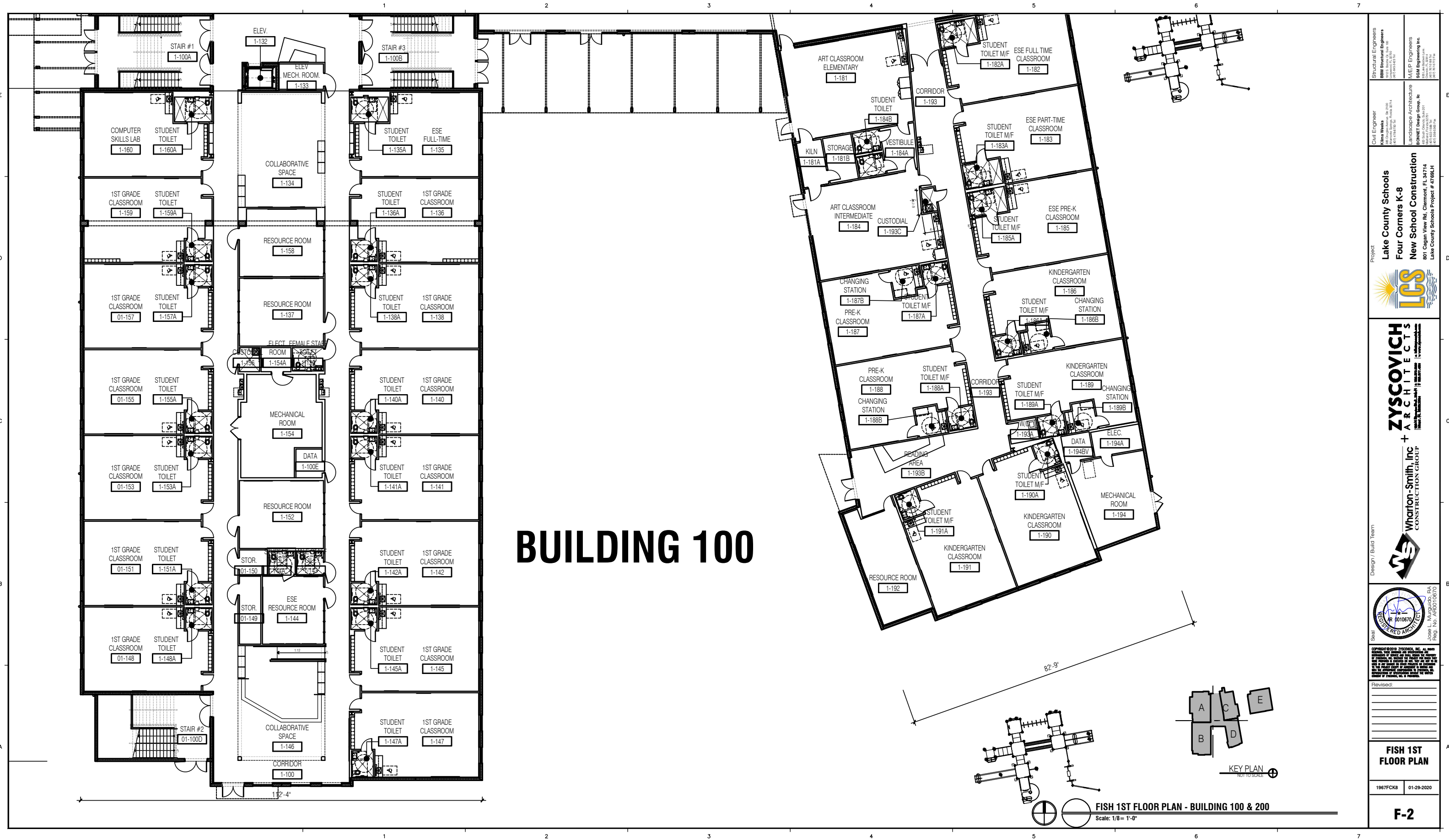
1967FCK8 01-29-2020

F-1



<p>Structural Engineers BW Structural Engineers 401 W. 1st St., Suite 200 Ft. Lauderdale, FL 33301 (954) 575-1100</p>	<p>Civil Engineer Kenna Weeks 401 W. 1st St., Suite 200 Ft. Lauderdale, FL 33301 (954) 575-1100</p>	<p>M/E/P Engineers M/E/P Engineering Inc. 1000 N. University Blvd., Suite 200 Ft. Lauderdale, FL 33301 (954) 575-1100</p>								
<p>Project Lake County Schools Four Corners K-8 New School Construction 801 Caplan View Rd., Clewiston, FL 34714 Lake County Schools Project # 47281.H</p>										
<p>Design/Build Team ZYSKOVICH + ARCHITECTS 1000 N. University Blvd., Suite 200 Ft. Lauderdale, FL 33301 (954) 575-1100</p>										
<p>Wharton-Smith, Inc. CONSTRUCTION GROUP 1000 N. University Blvd., Suite 200 Ft. Lauderdale, FL 33301 (954) 575-1100</p>										
<p>Professional Seal Registered Architect Jose L. Murguio, P.A. Reg. No. AR0010670</p>										
<p>Revised:</p> <table border="1"> <tr><td> </td><td> </td></tr> <tr><td> </td><td> </td></tr> <tr><td> </td><td> </td></tr> <tr><td> </td><td> </td></tr> </table>										
<p>1967CK8 01-29-2020</p>										
<p>FISH 1ST FLOOR PLAN</p>										
<p>F-2</p>										

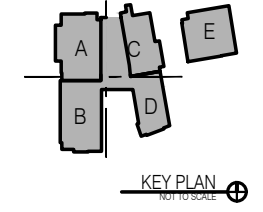
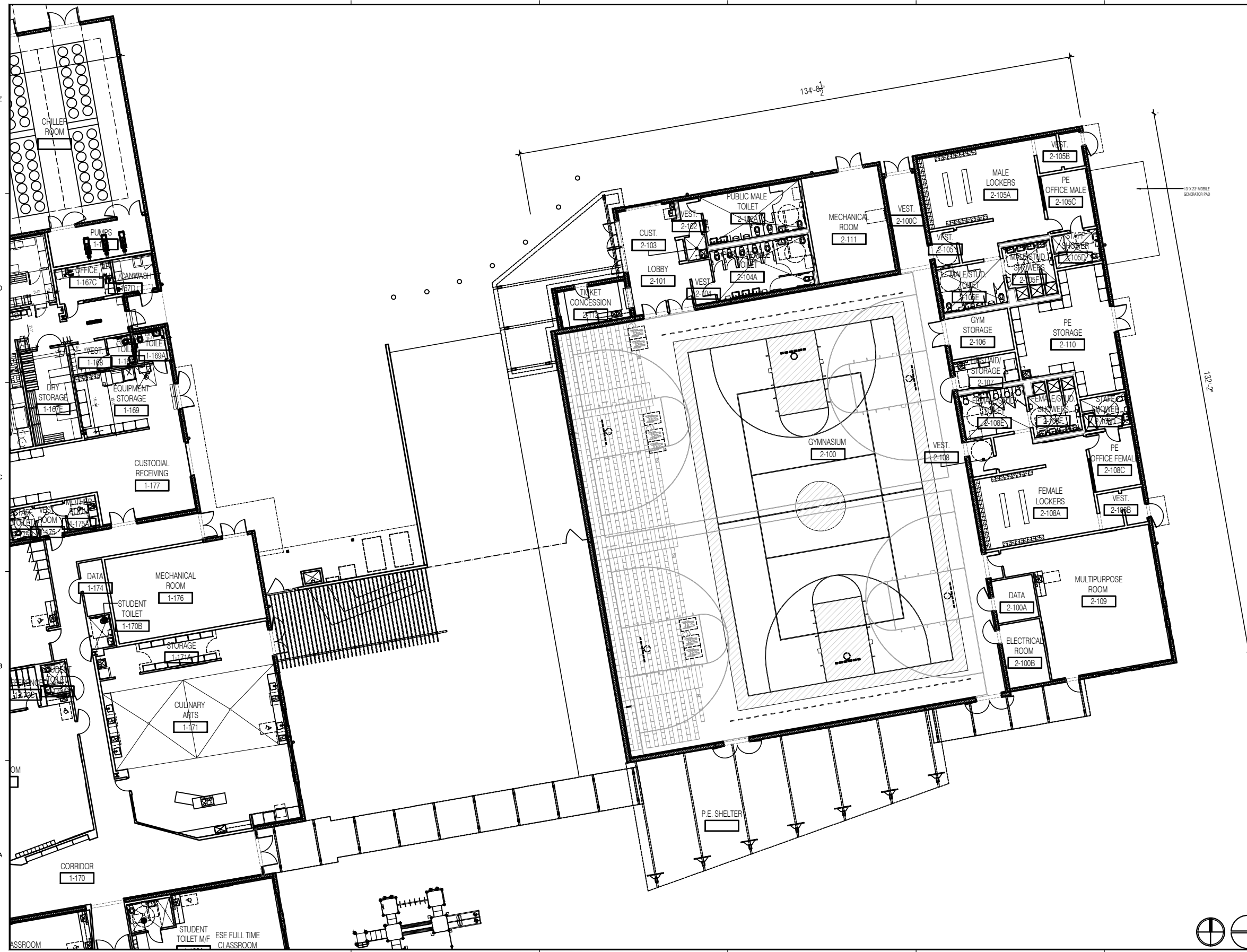
FISH 1ST FLOOR PLAN - BUILDING 100 & 200



BUILDING 100

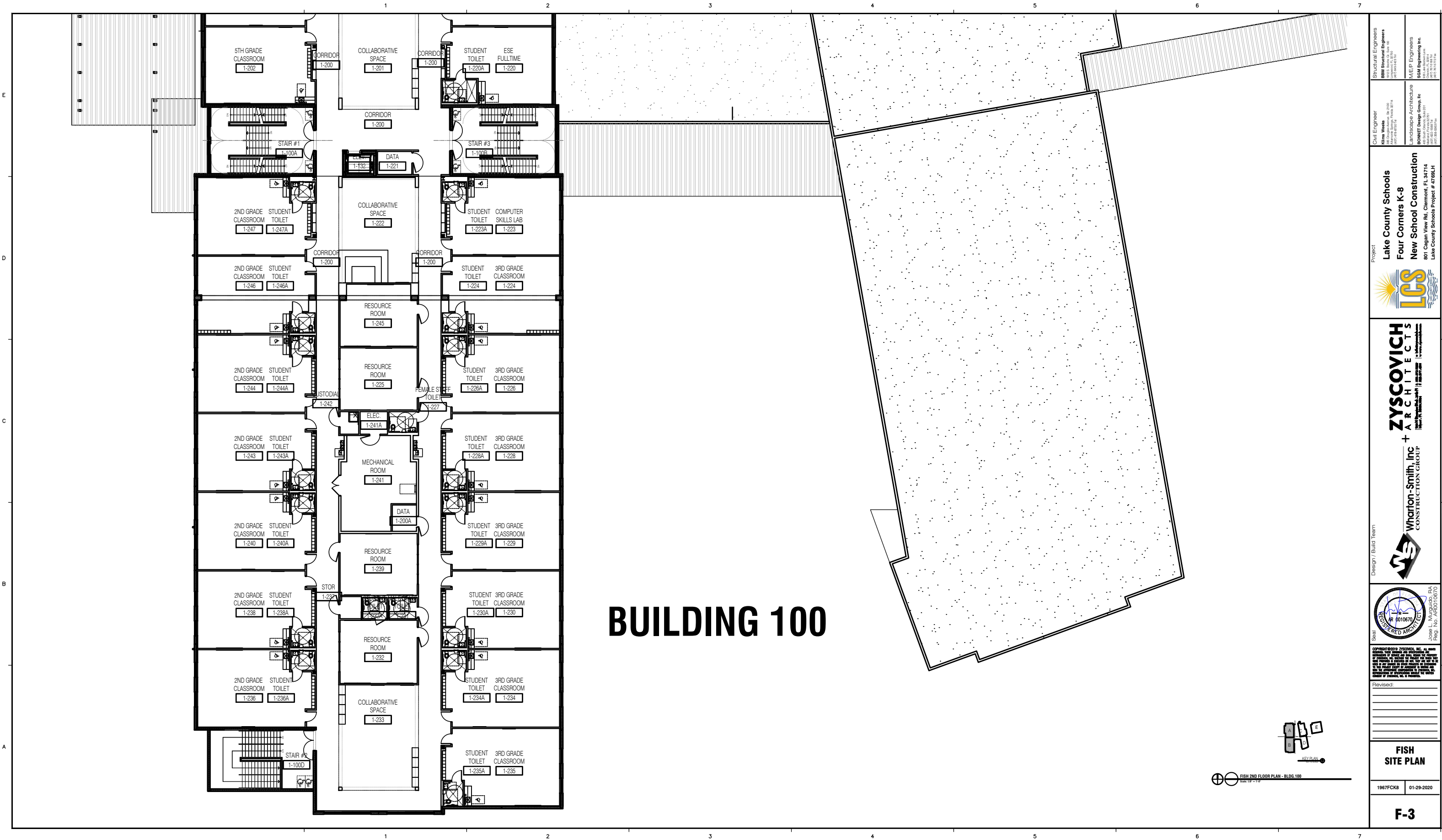
Structural Engineers BIM Structural Engineers 1001 S. Orange Ave., Suite 2074 Orlando, FL 32814 407.253.1811	M/E/P Engineers M/E/P Engineering Inc. 1001 S. Orange Ave., Suite 2074 Orlando, FL 32814 407.253.1811								
Civil Engineer Kyle Weeks 1001 S. Orange Ave., Suite 2074 Orlando, FL 32814 407.253.1811	Landscape Architecture Landscape Architecture Group, Inc. 1001 S. Orange Ave., Suite 2074 Orlando, FL 32814 407.253.1811								
Project Lake County Schools Four Corners K-8 New School Construction 801 Capasa View Rd., Clermont, FL 34714 Lake County Schools Project # 47281.H									
ZYSKOVICH ARCHITECTS 1001 S. Orange Ave., Suite 2074 Orlando, FL 32814 407.253.1811									
Design/Build Team Wharton-Smith, Inc. CONSTRUCTION GROUP 1001 S. Orange Ave., Suite 2074 Orlando, FL 32814 407.253.1811									
Seal 									
Revised: <table border="1"> <tr><td> </td><td> </td></tr> <tr><td> </td><td> </td></tr> <tr><td> </td><td> </td></tr> <tr><td> </td><td> </td></tr> </table>									
FISH 1ST FLOOR PLAN									
1967CK8 01-29-2020									
F-2									

FISH 1ST FLOOR PLAN - BUILDING 100 & 200
Scale: 1/8" = 1'-0"



FISH 1ST FLOOR PLAN - BUILDING 100 & 200
 Scale: 1/8" = 1'-0"

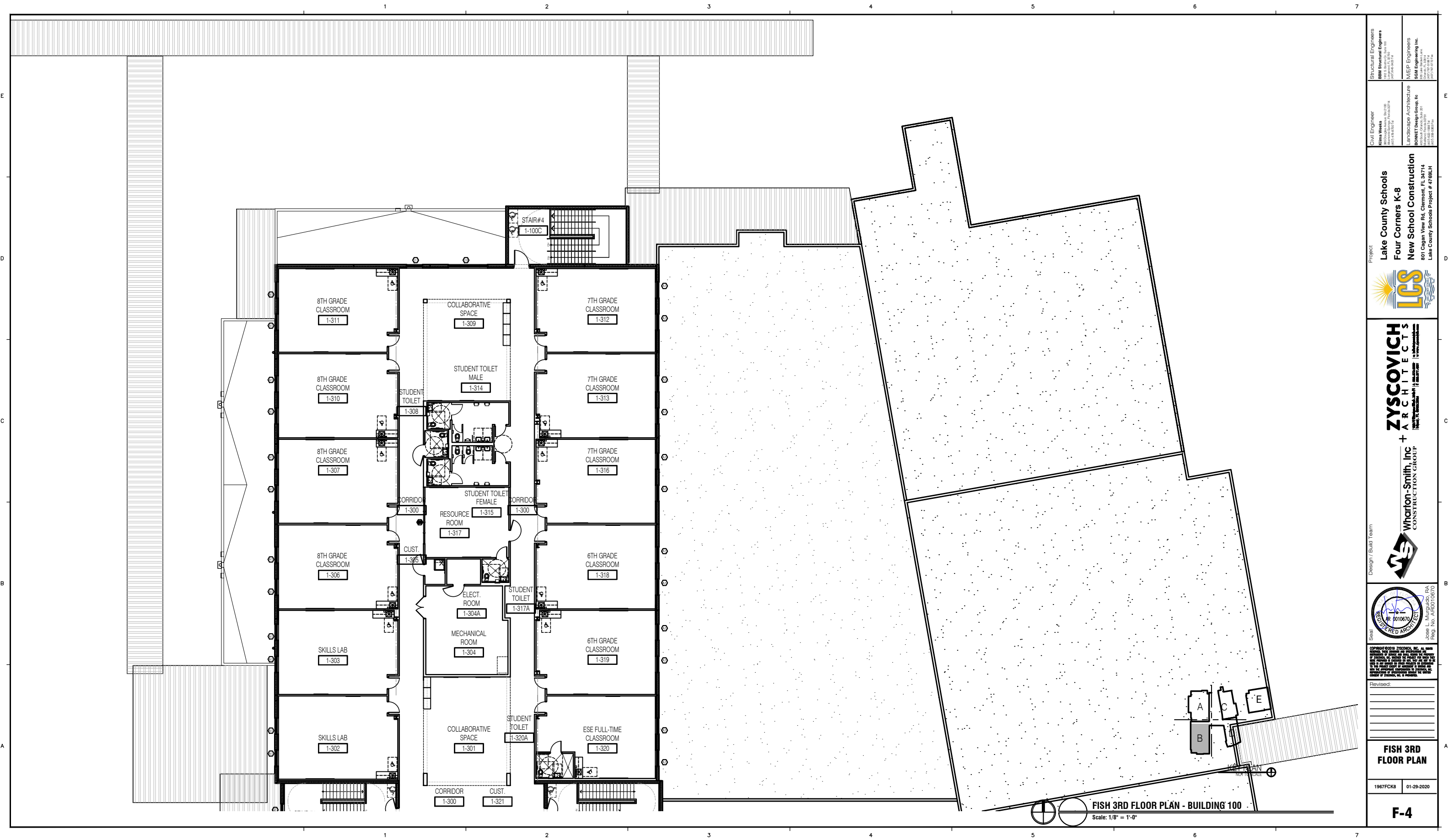
Structural Engineers BIM Structural Engineers 11000 W. US HWY 90 SUITE 100 DENVER, CO 80231 303.755.1100	Civil Engineer Kiana Weeks 11000 W. US HWY 90 SUITE 100 DENVER, CO 80231 303.755.1100	M/E/P Engineers M/E/P Engineers 11000 W. US HWY 90 SUITE 100 DENVER, CO 80231 303.755.1100								
Project: Lake County Schools Four Corners K-8 New School Construction 801 Capra View Rd, Clermont, FL 34714 Lake County Schools Project # 47881.H										
ZYSKOVICH ARCHITECTS + Wharton-Smith, Inc. CONSTRUCTION GROUP										
Design/Build Team 										
Seal 										
Revised: <table border="1"> <tr><td> </td><td> </td></tr> <tr><td> </td><td> </td></tr> <tr><td> </td><td> </td></tr> <tr><td> </td><td> </td></tr> </table>										
FISH 1ST FLOOR PLAN										
1967CK8 01-29-2020										
F-2										



BUILDING 100

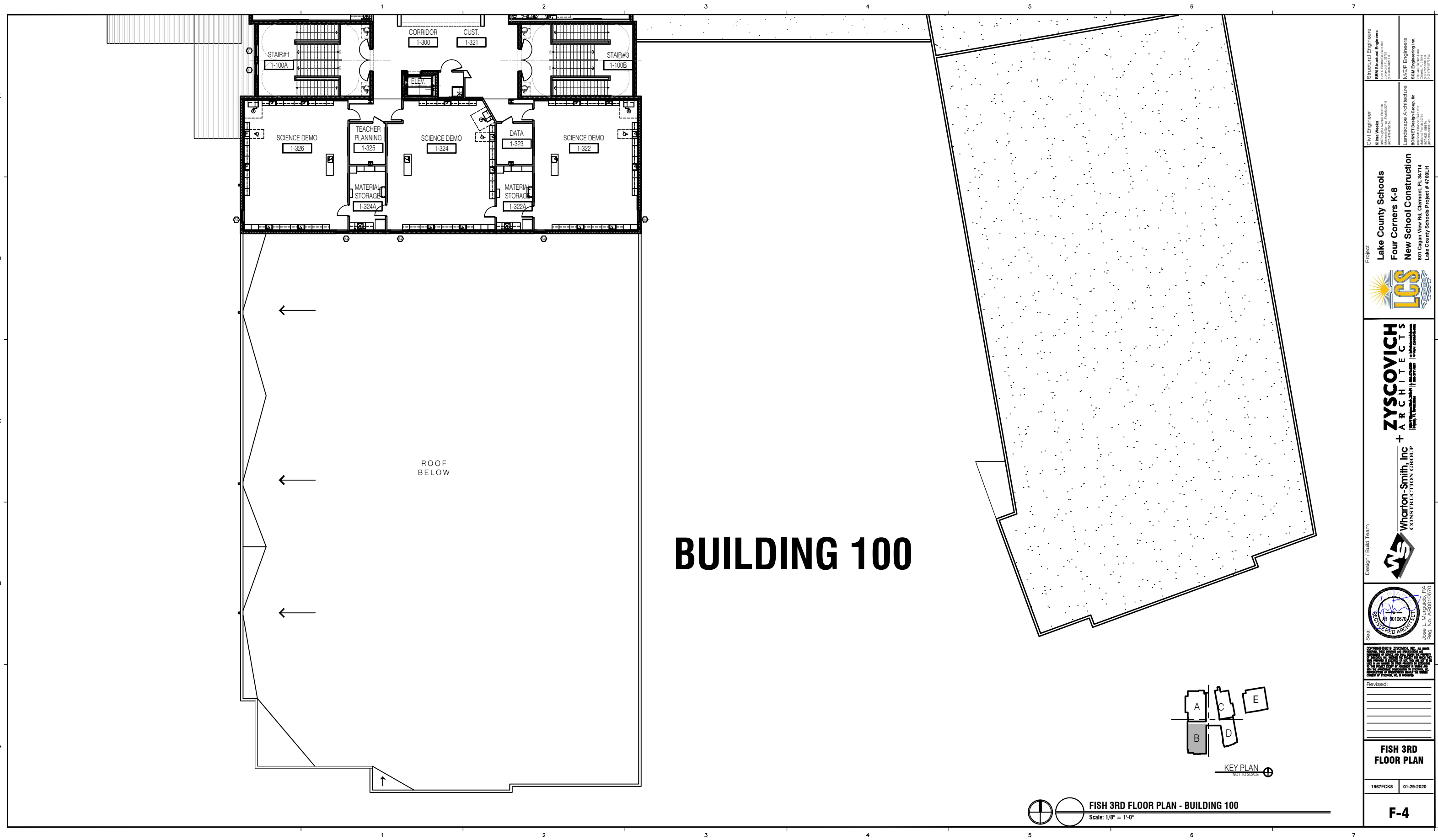
FISH 2ND FLOOR PLAN - BLDG 100
Scale: 1/8" = 1'-0"

<p>Structural Engineers BIM Structural Engineers 1001 E. US Highway 1, Suite 200 Kissimmee, FL 34758 (813) 841-1111</p>	<p>M/E/P Engineers M/E/P Engineering Inc. 1001 E. US Highway 1, Suite 200 Kissimmee, FL 34758 (813) 841-1111</p>										
<p>Civil Engineer Nina Weeks 1001 E. US Highway 1, Suite 200 Kissimmee, FL 34758 (813) 841-1111</p>	<p>Landscape Architecture Landscaping Group, Inc. 1001 E. US Highway 1, Suite 200 Kissimmee, FL 34758 (813) 841-1111</p>										
<p>Project Lake County Schools Four Corners K-8 New School Construction 801 Cagan View Rd, Clewiston, FL 34714 Lake County Schools Project # 47881-H</p>											
<p>ZYSKOVICH ARCHITECTS 1001 E. US Highway 1, Suite 200 Kissimmee, FL 34758 (813) 841-1111</p>											
<p>Wharton-Smith, Inc. CONSTRUCTION GROUP 1001 E. US Highway 1, Suite 200 Kissimmee, FL 34758 (813) 841-1111</p>											
<p>Design/Build Team</p>											
<p>Seal  Jose L. Murguio, RA Reg. No. ARB0010670</p>											
<p>Revised:</p> <table border="1"> <tr><td> </td><td> </td></tr> <tr><td> </td><td> </td></tr> <tr><td> </td><td> </td></tr> <tr><td> </td><td> </td></tr> <tr><td> </td><td> </td></tr> </table>											
<p>FISH SITE PLAN</p>											
<p>1967FK8 01-29-2020</p>											
<p>F-3</p>											



FISH 3RD FLOOR PLAN - BUILDING 100
 Scale: 1/8" = 1'-0"

<p>Structural Engineers [Firm Name] [Address] [Phone]</p>	<p>Civil Engineer [Name] [Address] [Phone]</p>	<p>M/E/P Engineers [Firm Name] [Address] [Phone]</p>						
<p>Project Lake County Schools Four Corners K-8 New School Construction 801 Cagan View Rd, Clermont, FL 34714 Lake County Schools Project # 4769LH</p>								
<p>LCS</p>								
<p>ZYSKOVICH ARCHITECTS</p>								
<p>Wharton-Smith, Inc. + CONSTRUCTION GROUP</p>								
<p>SEAL REGISTERED ARCHITECT [Name] [Address] [Phone]</p>								
<p>REVISIONS</p> <table border="1"> <tr><td> </td><td> </td></tr> <tr><td> </td><td> </td></tr> <tr><td> </td><td> </td></tr> </table>								
<p>FISH 3RD FLOOR PLAN</p>								
<p>1967FCKB 01-29-2020</p>								
<p>F-4</p>								



BUILDING 100

FISH 3RD FLOOR PLAN - BUILDING 100
 Scale: 1/8" = 1'-0"

Structural Engineers <small>James W. Weeks, P.E. No. 2122 1995 S. Orange Blvd., Suite 200 Orange, FL 32668 407.266.8277</small>	M/E/P Engineers <small>SM Engineering Inc. 100 S. Orange Blvd., Suite 200 Orange, FL 32668 407.266.8277</small>
Civil Engineer <small>Anna W. Weeks, No. 2122 1995 S. Orange Blvd., Suite 200 Orange, FL 32668 407.266.8277</small>	Landscapes Architecture <small>BOHNET Design Group, Inc. 100 S. Orange Blvd., Suite 200 Orange, FL 32668 407.266.8277</small>
Project Lake County Schools Four Corners K-8 New School Construction 801 Cagan View Rd, Clermont, FL 34714 Lake County Schools Project # 4769LH	
	
ZYSKOVICH ARCHITECTS <small>100 S. Orange Blvd., Suite 200 Orange, FL 32668 407.266.8277</small>	
 Wharton-Smith, Inc. CONSTRUCTION GROUP	
	
<small>Copyright © 2020 Zyskovich, Inc. All rights reserved. This drawing is the property of Zyskovich, Inc. and is not to be reproduced, stored in a retrieval system, or transmitted in any form or by any means, electronic, mechanical, photocopying, recording, or by any information storage and retrieval system, without the prior written permission of Zyskovich, Inc. The user of this drawing is deemed to have accepted the terms and conditions of the license agreement located at the bottom of this drawing. The user of this drawing is deemed to have accepted the terms and conditions of the license agreement located at the bottom of this drawing.</small>	
Revised: _____ _____ _____	
FISH 3RD FLOOR PLAN	
1967FCK8	01-29-2020
F-4	