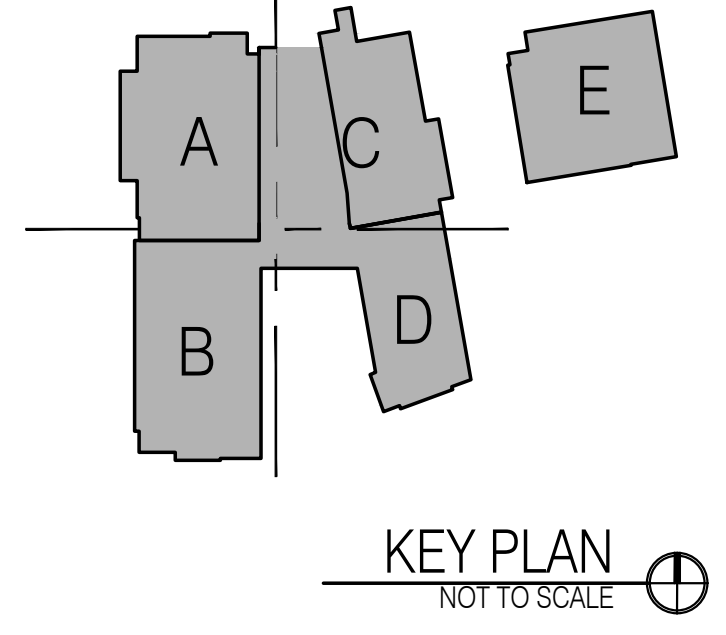


BUILDING 200

BUILDING 100



FISH 1ST FLOOR PLAN - BUILDING 100 & 200
Scale: 1/16" = 1'-0"

Structural Engineers
BBM Structural Engineers
19215 Boca Blvd, Suite 100
Lombard, IL 60148
(630) 702-3333

Civil Engineer
Kline Wicks
3800 South County Road, Suite 201
Mesa, AZ 85206
(480) 942-7070

M/E/P Engineers
SGM Engineering Inc.
400 South County Road, Suite 201
Mesa, AZ 85206
(480) 942-7070

Project
Lake County Schools
Four Corners K-8
New School Construction
801 Cagan View Rd, Clermont, FL 34714
Lake County Schools Project # 47684H

Architect
Wharton-Smith, Inc.
CONSTRUCTION GROUP
1000 N. US Highway 17, Suite 200
Clermont, FL 34711
(888) 777-2022

Architect
Zyscovich + Architects
1000 N. US Highway 17, Suite 200
Clermont, FL 34711
(888) 777-2022

Architect
LCS
LAKE COUNTY SCHOOLS
1000 N. US Highway 17, Suite 200
Clermont, FL 34711
(888) 777-2022

Architect
Wharton-Smith, Inc.
CONSTRUCTION GROUP
1000 N. US Highway 17, Suite 200
Clermont, FL 34711
(888) 777-2022

Architect
Zyscovich + Architects
1000 N. US Highway 17, Suite 200
Clermont, FL 34711
(888) 777-2022

Architect
Wharton-Smith, Inc.
CONSTRUCTION GROUP
1000 N. US Highway 17, Suite 200
Clermont, FL 34711
(888) 777-2022

Architect
Zyscovich + Architects
1000 N. US Highway 17, Suite 200
Clermont, FL 34711
(888) 777-2022

Architect
Wharton-Smith, Inc.
CONSTRUCTION GROUP
1000 N. US Highway 17, Suite 200
Clermont, FL 34711
(888) 777-2022

Architect
Zyscovich + Architects
1000 N. US Highway 17, Suite 200
Clermont, FL 34711
(888) 777-2022

Architect
Wharton-Smith, Inc.
CONSTRUCTION GROUP
1000 N. US Highway 17, Suite 200
Clermont, FL 34711
(888) 777-2022

Architect
Zyscovich + Architects
1000 N. US Highway 17, Suite 200
Clermont, FL 34711
(888) 777-2022