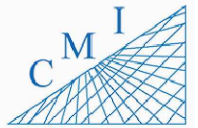


Groveland Elementary School



REV	DATE	DESCRIPTION
A	02/08/21	PRELIMINARY FISH PLAN
B		
0		
1		
2		
3		
4		
5		
6		

ARCHIS PROJECT NO.:	
DRAWN BY:	CHECKED BY:
VP	CB



158 Terra Mango Loop, Suite B,
Orlando, FL 32835
Main: (407) 293-4168

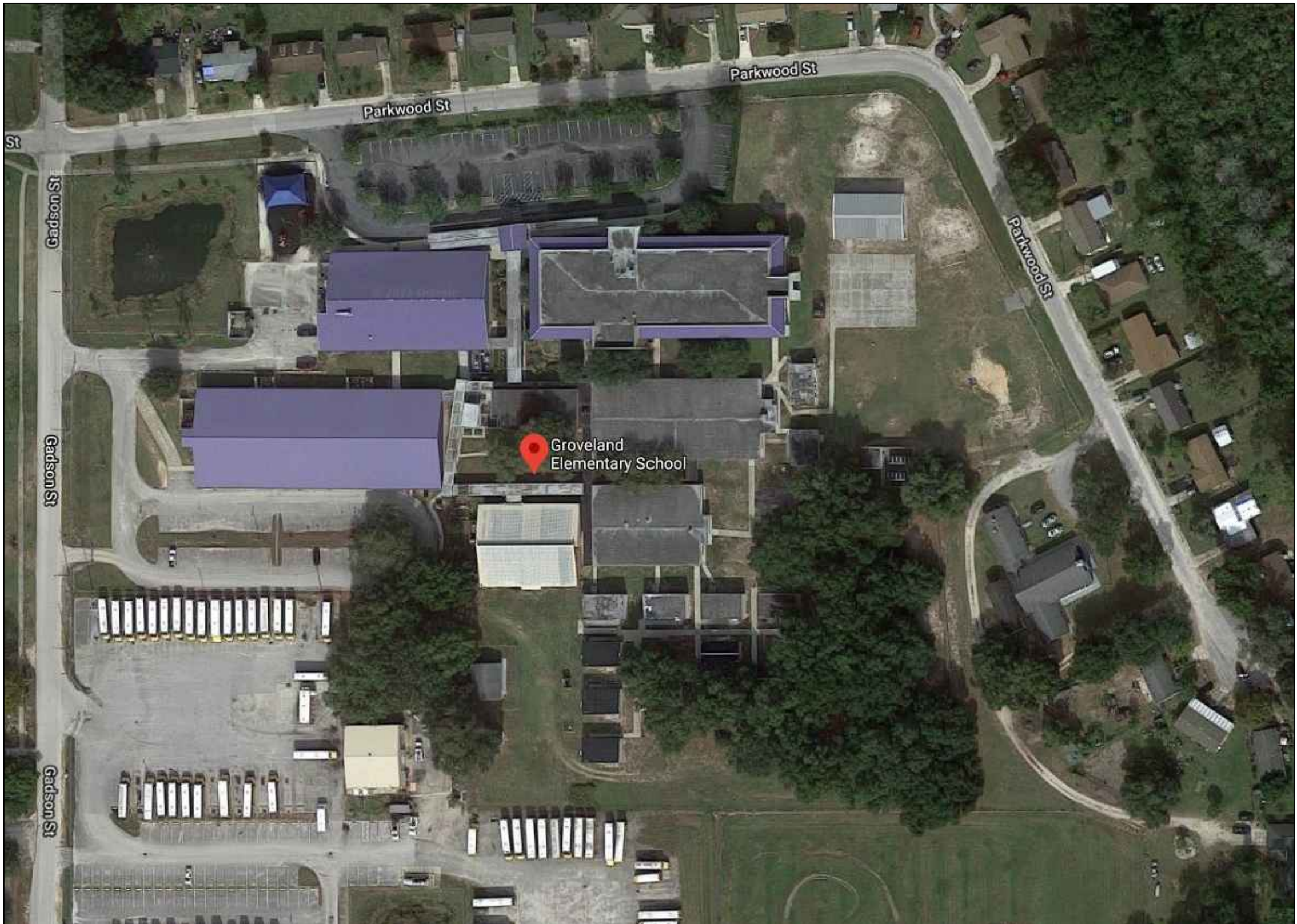
PREPARED BY:



350 E. Crown Point Road, Suite 1100
Winter Garden, FL 34787
Main: 888.324.2557
Direct: 407.439.1594

INDEX OF DRAWINGS

SHT. NO.	DESCRIPTION
SP-01	AERIAL
SP-02	SITE PLAN
B-01.1	BUILDING 01 FIRST FLOOR
B-01.2	BUILDING 01 SECOND FLOOR
B-02	BUILDING 02
B-03	BUILDING 03
B-04	BUILDING 04
B-05	BUILDING 06
B-06	BUILDING 07
B-07	BUILDING 08
B-08	BUILDING 10, STORAGE AND SHED



1
SP-01
AERIAL VIEW
SCALE: N.T.S.

DATE
_____, PE
FL PROFESSIONAL ENGINEER LIC. #

Groveland Elementary School

(FISH PLAN)
930 Parkwood St,
Groveland, FL

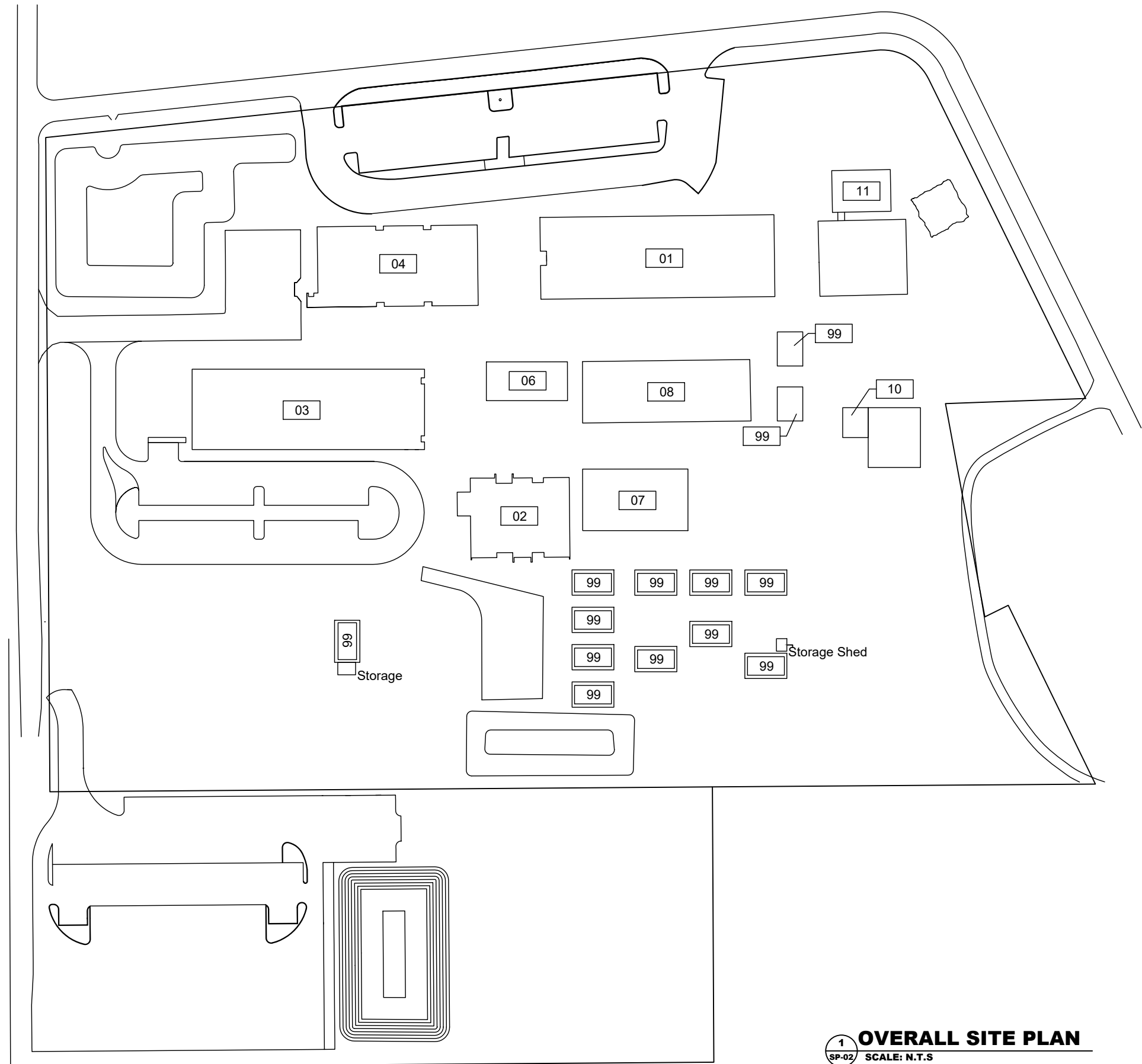
SHEET DESCRIPTION

AERIAL VIEW

SHEET NUMBER
SP-01

ARCHIS TECHNOLOGIES - \\server-1\H\Archis\21-023 Groveland ES\From ISP\2021-02-08\896_Lake County Fish Survey_Groveland ES.dwg February 9, 2021 00:08:32 PC20

ARCHIS TECHNOLOGIES - \\server-1\H\Archis\21-023 Groveland ES\From ISP\2021-02-08\896_Lake County Fish Survey_Groveland ES.dwg February 9, 2021 00:08:38 PC20



LEGEND

- 01-ADMINISTRATION/CLASSROOM
- 02-MEDIA CENTER/LIBRARY
- 03-CLASSROOMS
- 04-CAFETERIA
- 06-CLASSROOMS
- 07-CLASSROOMS
- 08-CLASSROOMS
- 09-FLAMMABLE STORAGE
- 10-MECHANICAL
- 11-COVERED PLAY STRUCTURE
- 99-PORTABLES



REV	DATE	DESCRIPTION
A	02/08/21	PRELIMINARY FISH PLAN
B		
0		
1		
2		
3		
4		
5		
6		

ARCHIS PROJECT NO.:	
DRAWN BY: VP	CHECKED BY: CB



PREPARED BY:

350 E. Crown Point Road, Suite 1100
Winter Garden, FL 34787
Main: 888.324.2557
Direct: 407.439.1594

DATE _____
_____, PE
FL PROFESSIONAL ENGINEER LIC. # _____

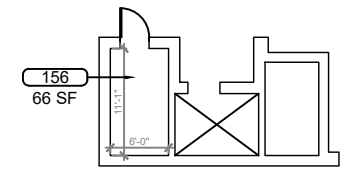
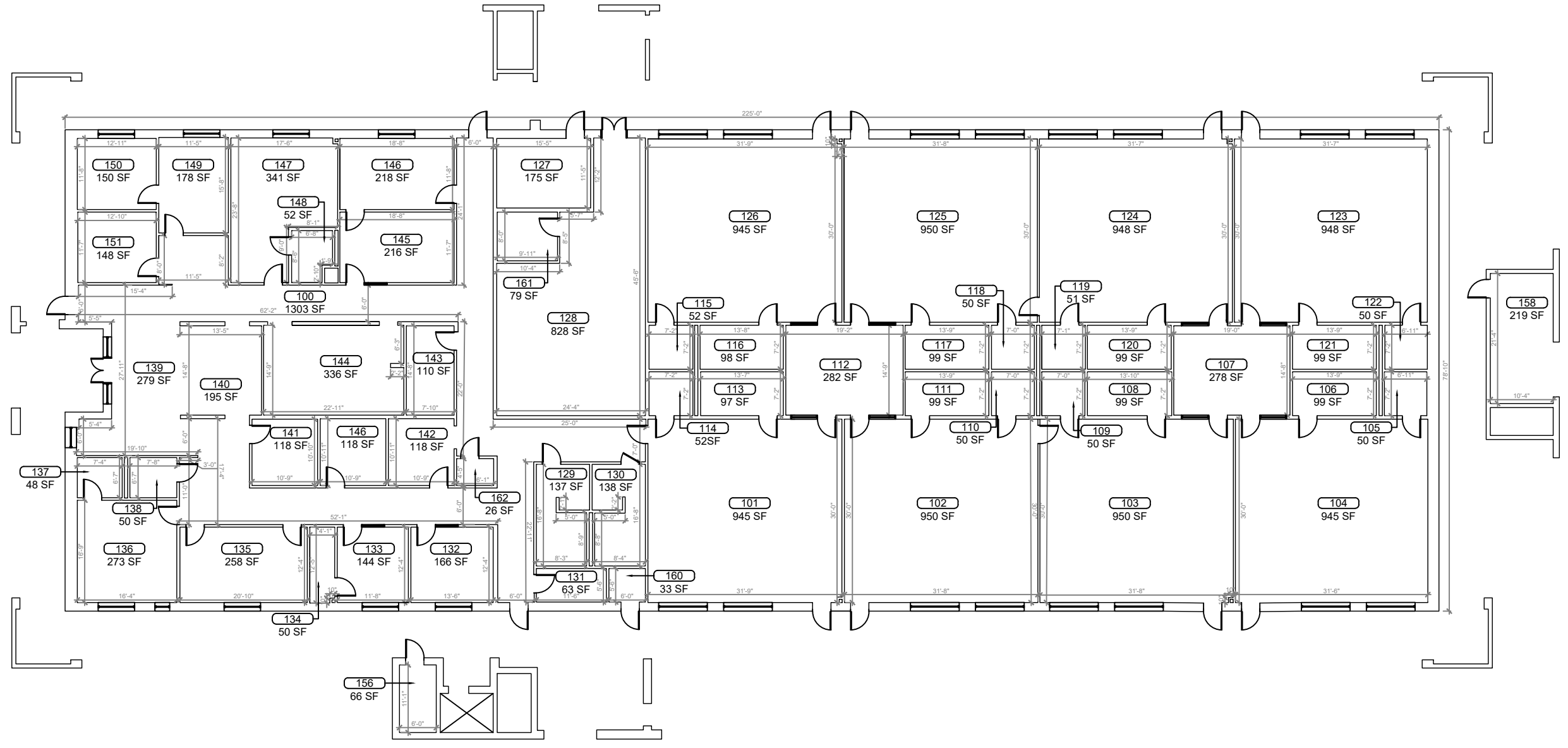
Groveland Elementary School
(FISH PLAN)
930 Parkwood St,
Groveland, FL

SHEET DESCRIPTION
OVERALL SITE PLAN

SHEET NUMBER
SP-02

1 OVERALL SITE PLAN
SCALE: N.T.S

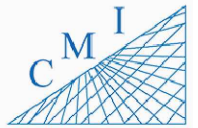
ARCHIS TECHNOLOGIES - \\server-1\H\Archis\21-023 Groveland ES\From ISP\2021-02-08\896_Lake County Fish Survey_Groveland ES.dwg February 9, 2021 00:08:39 PC20



1 BUILDING 01 FIRST FLOOR PLAN
 B-01.1 SCALE: 1/8"=1'-0"

REV	DATE	DESCRIPTION
A	02/08/21	PRELIMINARY FISH PLAN
B		
0		
1		
2		
3		
4		
5		
6		

ARCHIS PROJECT NO.:
 DRAWN BY: VP
 CHECKED BY: CB



158 Terra Mango Loop, Suite B,
 Orlando, FL 32835
 Main: (407) 293-4168

PREPARED BY:
ARCHIS
 350 E. Crown Point Road, Suite 1100
 Winter Garden, FL 34787
 Main: 888.324.2557
 Direct: 407.439.1594

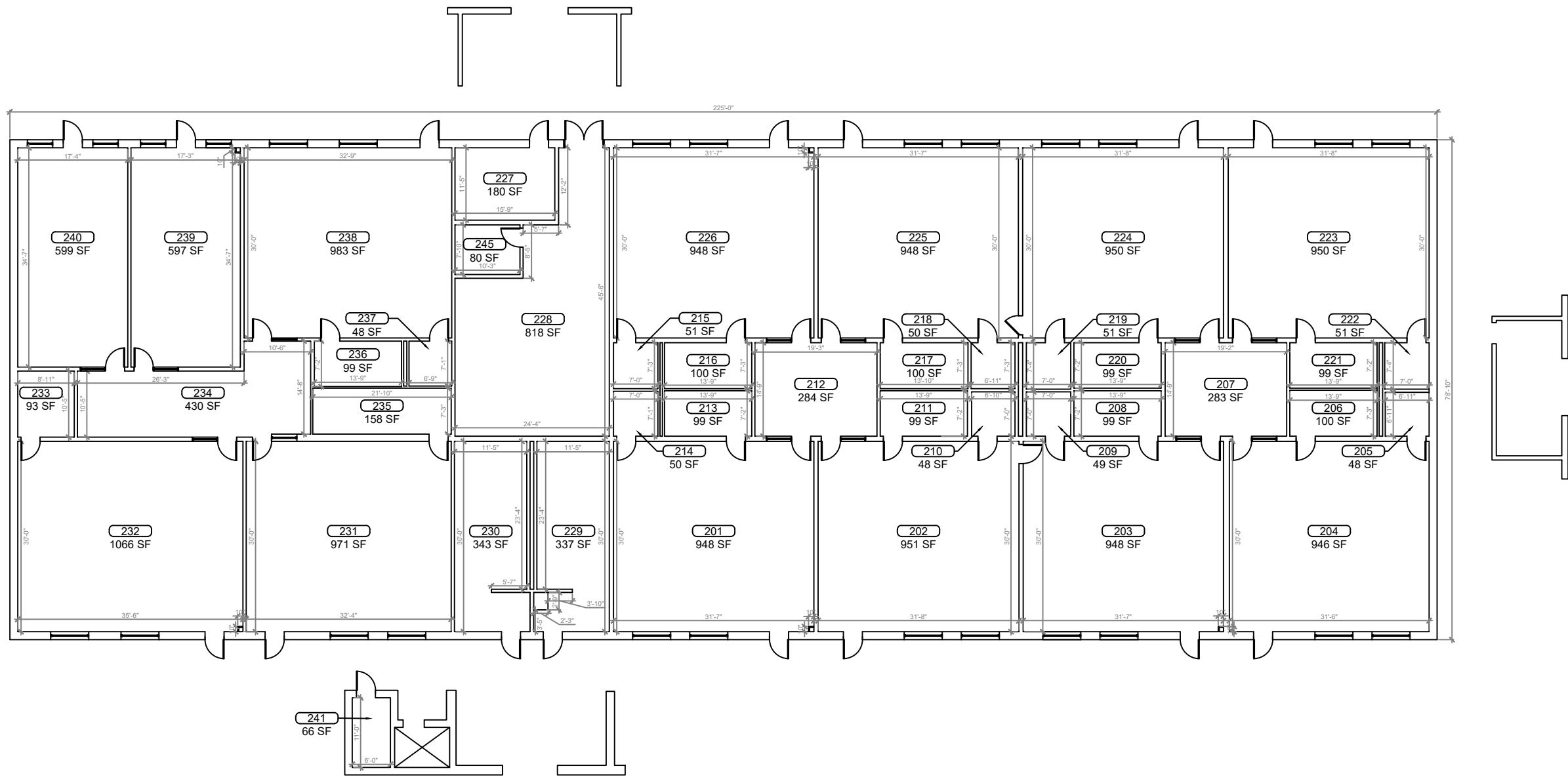
DATE
 , PE
 FL PROFESSIONAL ENGINEER LIC. #

Groveland Elementary School
(FISH PLAN)
 930 Parkwood St,
 Groveland, FL

SHEET DESCRIPTION
BUILDING 01
 SHEET NUMBER
B-01.1

KEY PLAN

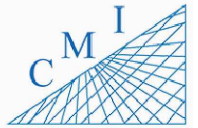
ARCHIS TECHNOLOGIES - \\server-1\H\Archis\21-023 Groveland ES\From ISP\2021-02-08\896_Lake County Fish Survey_Groveland ES.dwg February 9, 2021 00:08:44 PC20



1
B-01.2 **BUILDING 01 SECOND FLOOR PLAN**
SCALE: 1/8"=1'-0"

REV	DATE	DESCRIPTION
A	02/08/21	PRELIMINARY FISH PLAN
B		
0		
1		
2		
3		
4		
5		
6		

ARCHIS PROJECT NO.:
DRAWN BY: VP
CHECKED BY: CB



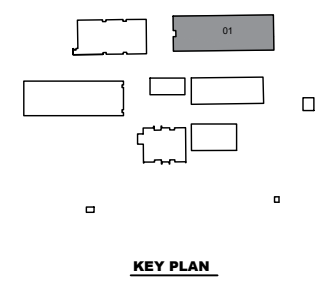
158 Terra Mango Loop, Suite B,
Orlando, FL 32835
Main: (407) 293-4168

PREPARED BY:
ARCHIS
350 E. Crown Point Road, Suite 1100
Winter Garden, FL 34787
Main: 888.324.2557
Direct: 407.439.1594

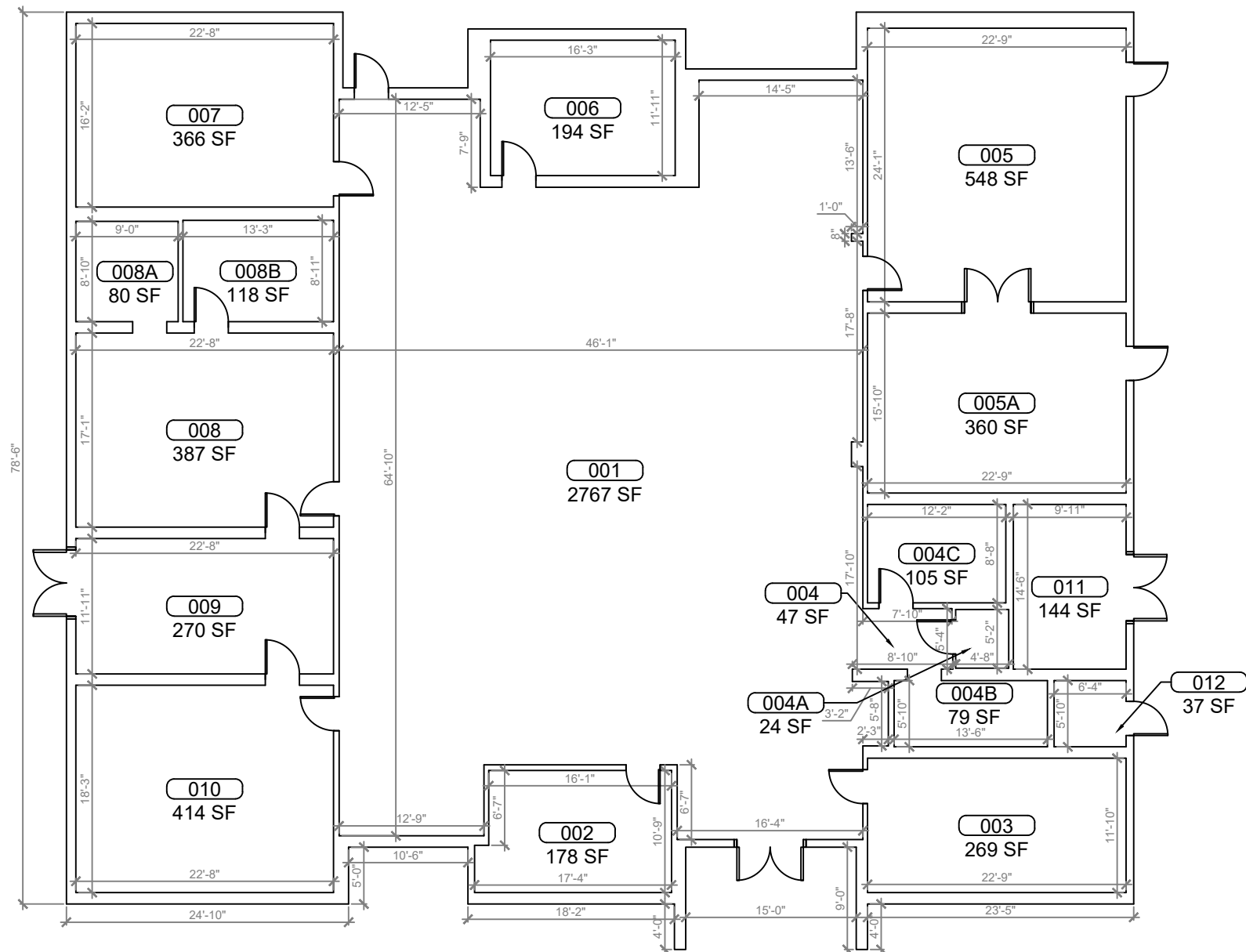
DATE
, PE
FL PROFESSIONAL ENGINEER LIC. #

Groveland Elementary School
(FISH PLAN)
930 Parkwood St,
Groveland, FL
SHEET DESCRIPTION

BUILDING 01
SHEET NUMBER
B-02



ARCHIS TECHNOLOGIES - \\server-1\H\Archis\21-023 Groveland ES\From ISP\2021-02-08\896_Lake County Fish Survey_Groveland ES.dwg February 9, 2021 00:08:49 PC20



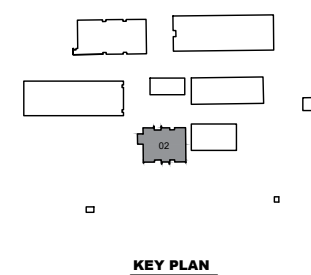
REV	DATE	DESCRIPTION
A	02/08/21	PRELIMINARY FISH PLAN
B		
0		
1		
2		
3		
4		
5		
6		

ARCHIS PROJECT NO.:
 DRAWN BY: VP
 CHECKED BY: CB



PREPARED BY:
 ARCHIS
 350 E. Crown Point Road, Suite 1100
 Winter Garden, FL 34787
 Main: 888.324.2557
 Direct: 407.439.1594

1 BUILDING 02 FLOOR PLAN
 B-02 SCALE: 3/16"=1'-0"



KEY PLAN

DATE
 , PE
 FL PROFESSIONAL ENGINEER LIC. #

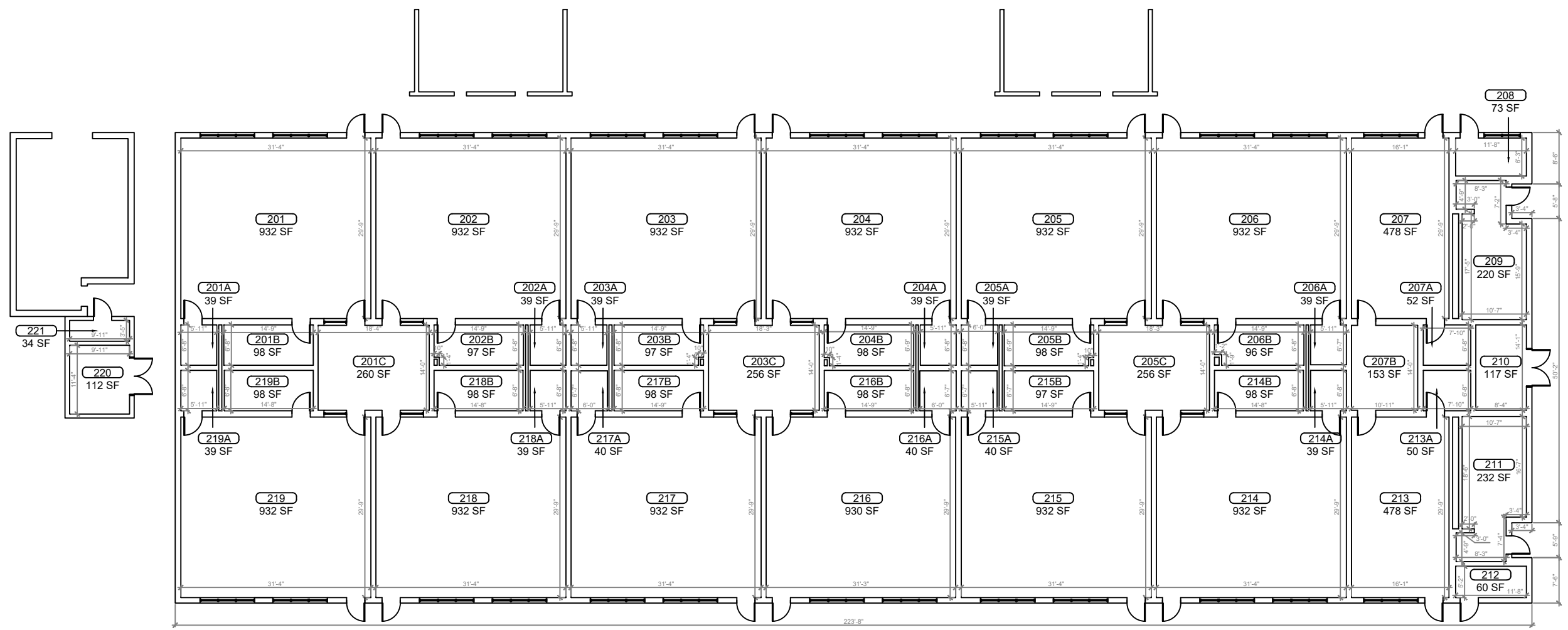
Groveland Elementary School
(FISH PLAN)
 930 Parkwood St,
 Groveland, FL

SHEET DESCRIPTION
BUILDING 02

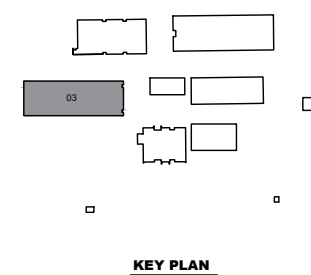
SHEET NUMBER
B-03

ARCHIS TECHNOLOGIES - \\server-1\H\Archis\21-023 Groveland ES\From ISP\2021-02-08\896_Lake County Fish Survey_Groveland ES.dwg February 9, 2021 00:08:54 PC20

TRUE NORTH

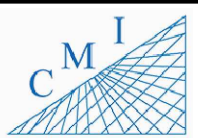


1
B-03 **BUILDING 03 FLOOR PLAN**
SCALE: 1/8"=1'-0"



REV	DATE	DESCRIPTION
A	02/08/21	PRELIMINARY FISH PLAN
B		
0		
1		
2		
3		
4		
5		
6		

ARCHIS PROJECT NO.:	
DRAWN BY:	CHECKED BY:
VP	CB



158 Terra Mango Loop, Suite B,
Orlando, FL 32835
Main: (407) 293-4168

PREPARED BY:
ARCHIS
350 E. Crown Point Road, Suite 1100
Winter Garden, FL 34787
Main: 888.324.2557
Direct: 407.439.1594

DATE
_____, PE
FL PROFESSIONAL ENGINEER LIC. #

Groveland Elementary School
(FISH PLAN)
930 Parkwood St,
Groveland, FL

SHEET DESCRIPTION
BUILDING 03
SHEET NUMBER
B-03



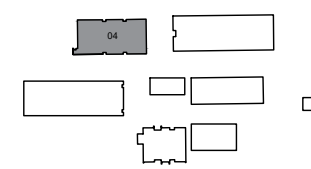
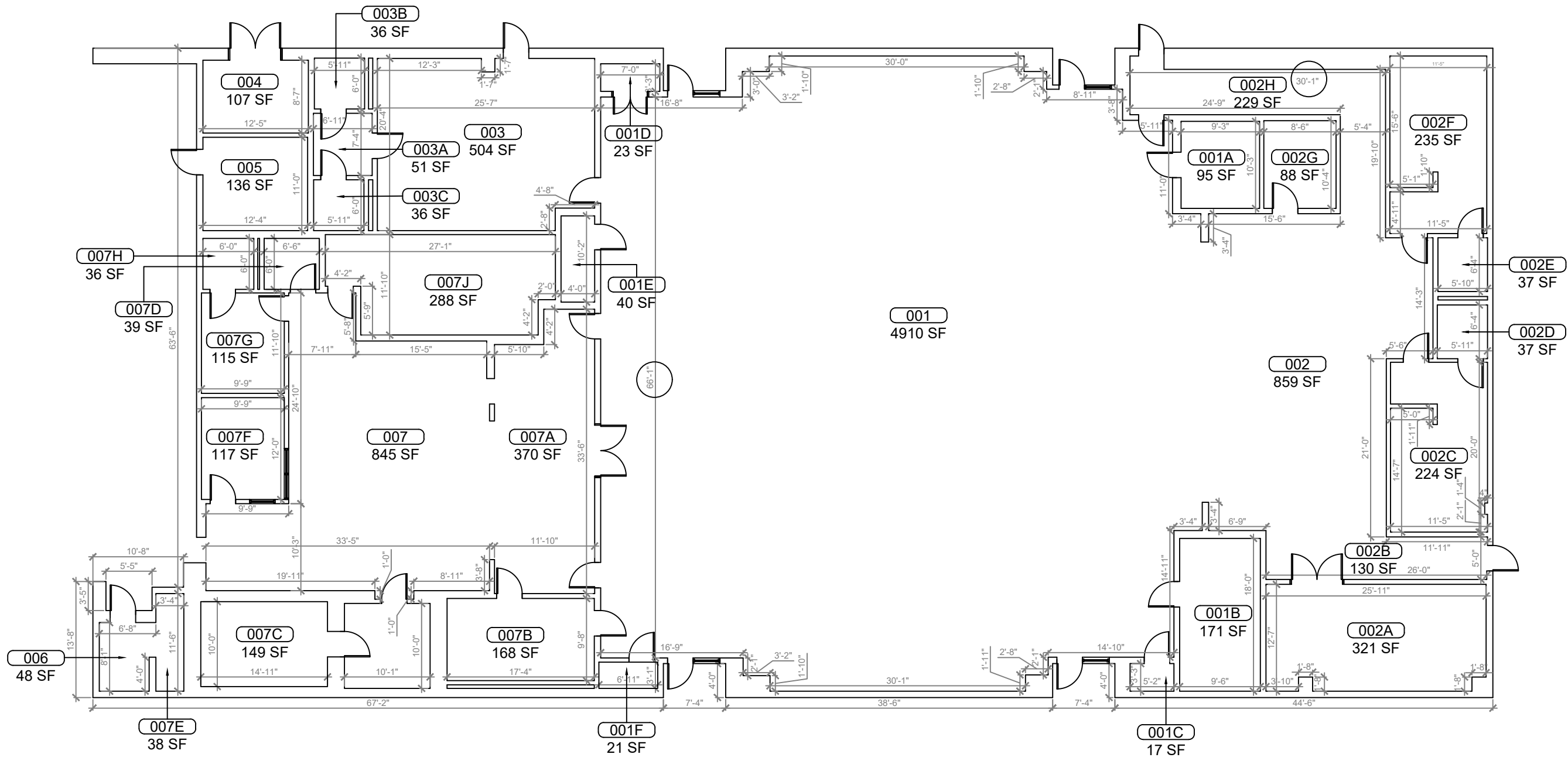
REV	DATE	DESCRIPTION
A	02/08/21	PRELIMINARY FISH PLAN
B		
0		
1		
2		
3		
4		
5		
6		

ARCHIS PROJECT NO.:	
DRAWN BY: VP	CHECKED BY: CB



CMI
158 Terra Mango Loop, Suite B,
Orlando, FL 32835
Main: (407) 293-4168

PREPARED BY:
ARCHIS
350 E. Crown Point Road, Suite 1100
Winter Garden, FL 34787
Main: 888.324.2557
Direct: 407.439.1594



1 BUILDING 04 FLOOR PLAN
SCALE: 3/16"=1'-0"

KEY PLAN

DATE
_____, PE
FL PROFESSIONAL ENGINEER LIC. #

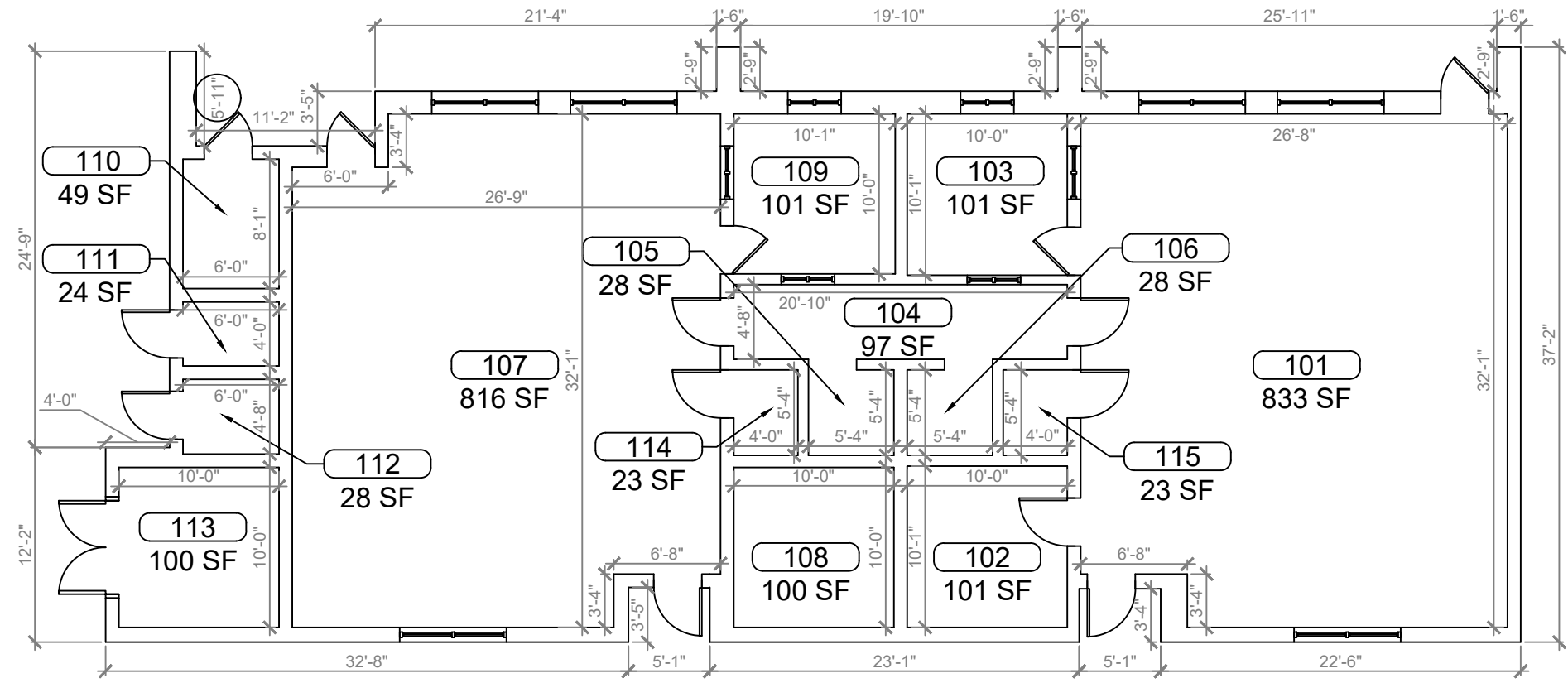
Groveland Elementary School
(FISH PLAN)
930 Parkwood St,
Groveland, FL

SHEET DESCRIPTION
BUILDING 04

SHEET NUMBER
B-04

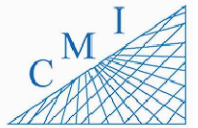
ARCHIS TECHNOLOGIES - \\server-1\H\Archis\21-023 Groveland ES\From ISP\2021-02-08\896_Lake County Fish Survey_Groveland ES.dwg February 9, 2021 00:08:59 PC20

ARCHIS TECHNOLOGIES - \\server-1\H\Archis\21-023 Groveland ES\From ISP\2021-02-08\896_Lake County Fish Survey_Groveland ES.dwg February 9, 2021 00:09:04 PC20



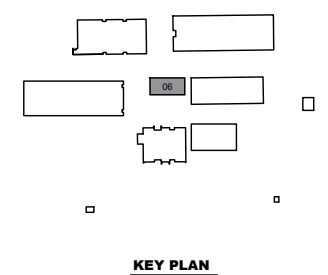
REV	DATE	DESCRIPTION
A	02/08/21	PRELIMINARY FISH PLAN
B		
0		
1		
2		
3		
4		
5		
6		

ARCHIS PROJECT NO.:
 DRAWN BY: VP
 CHECKED BY: CB



158 Terra Mango Loop, Suite B,
 Orlando, FL 32835
 Main: (407) 293-4168

PREPARED BY:
ARCHIS
 350 E. Crown Point Road, Suite 1100
 Winter Garden, FL 34787
 Main: 888.324.2557
 Direct: 407.439.1594



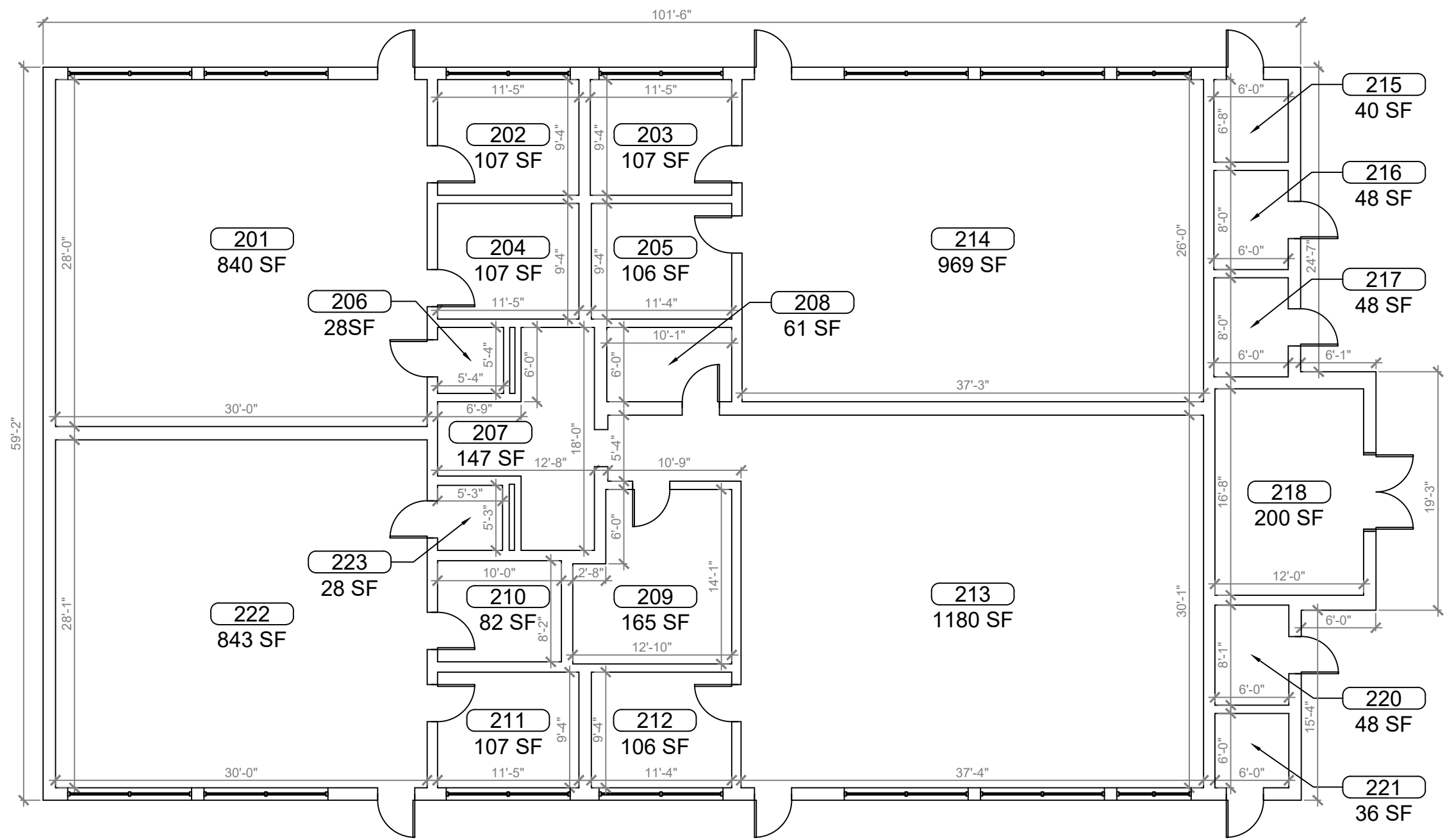
BUILDING 06 FLOOR PLAN
 SCALE: 1/4"=1'-0"

DATE _____
 , PE
 FL PROFESSIONAL ENGINEER LIC. # _____

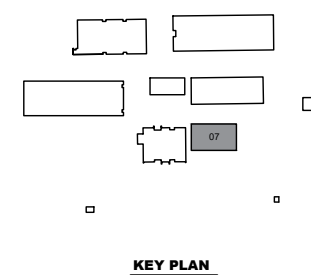
Groveland Elementary School
(FISH PLAN)
 930 Parkwood St,
 Groveland, FL

SHEET DESCRIPTION
BUILDING 06
 SHEET NUMBER
B-05

ARCHIS TECHNOLOGIES - \\server-1\H\Archis\21-023 Groveland ES\From ISP\2021-02-08\896_Lake County Fish Survey_Groveland ES.dwg February 9, 2021 00:09:09 PC20



1
B-06 **BUILDING 07 FLOOR PLAN**
SCALE: 1/4"=1'-0"



REV	DATE	DESCRIPTION
A	02/08/21	PRELIMINARY FISH PLAN
B		
0		
1		
2		
3		
4		
5		
6		

ARCHIS PROJECT NO.:
DRAWN BY: VP
CHECKED BY: CB



CMI
158 Terra Mango Loop, Suite B,
Orlando, FL 32835
Main: (407) 293-4168

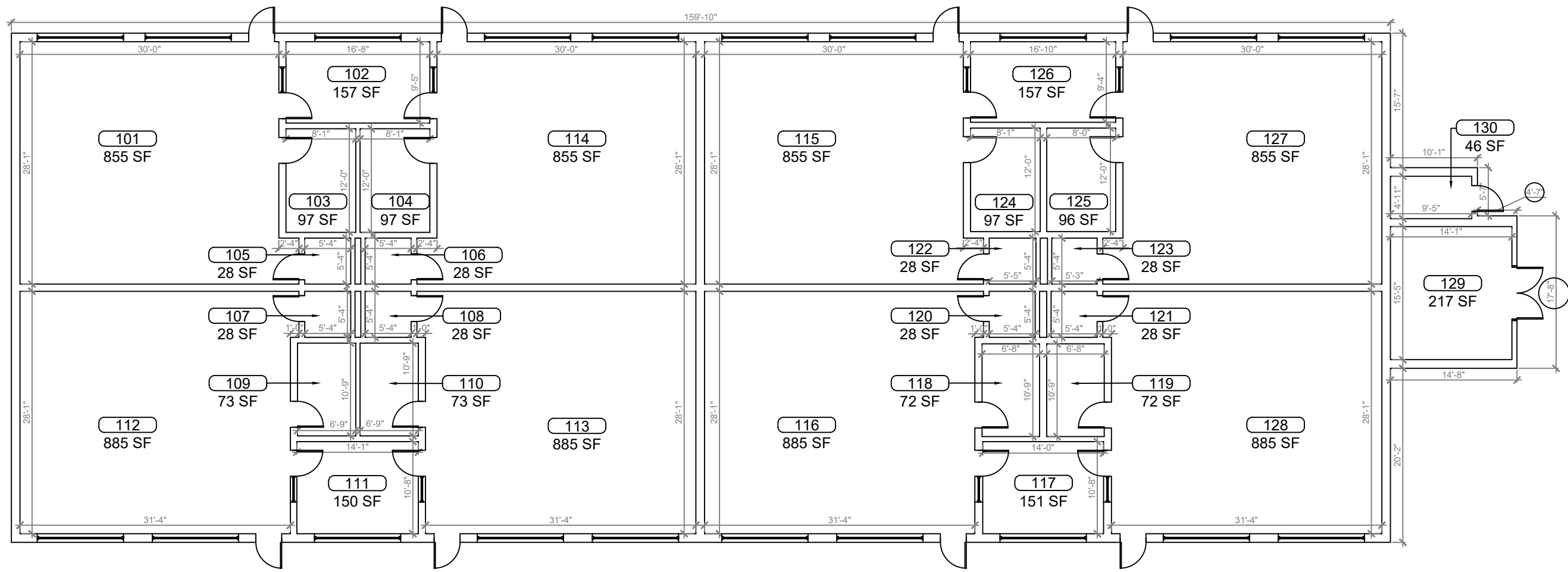
PREPARED BY:
ARCHIS
350 E. Crown Point Road, Suite 1100
Winter Garden, FL 34787
Main: 888.324.2557
Direct: 407.439.1594

DATE _____
_____, PE
FL PROFESSIONAL ENGINEER LIC. # _____

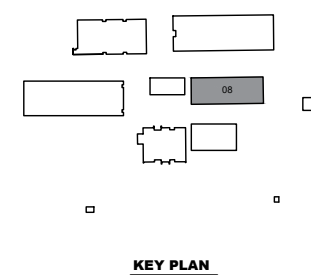
Groveland Elementary School
(FISH PLAN)
930 Parkwood St,
Groveland, FL

SHEET DESCRIPTION
BUILDING 07
SHEET NUMBER
B-06

ARCHIS TECHNOLOGIES - \\server-1\H\Archis\21-023 Groveland ES\From ISP\2021-02-08\896_Lake County Fish Survey_Groveland ES.dwg February 9, 2021 00:09:14 PC20

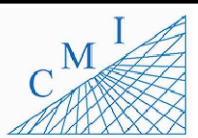


1
BUILDING 08 FLOOR PLAN
 SCALE: 3/16"=1'-0"



REV	DATE	DESCRIPTION
A	02/08/21	PRELIMINARY FISH PLAN
B		
0		
1		
2		
3		
4		
5		
6		

ARCHIS PROJECT NO.:
 DRAWN BY: VP
 CHECKED BY: CB



158 Terra Mango Loop, Suite B,
 Orlando, FL 32835
 Main: (407) 293-4168

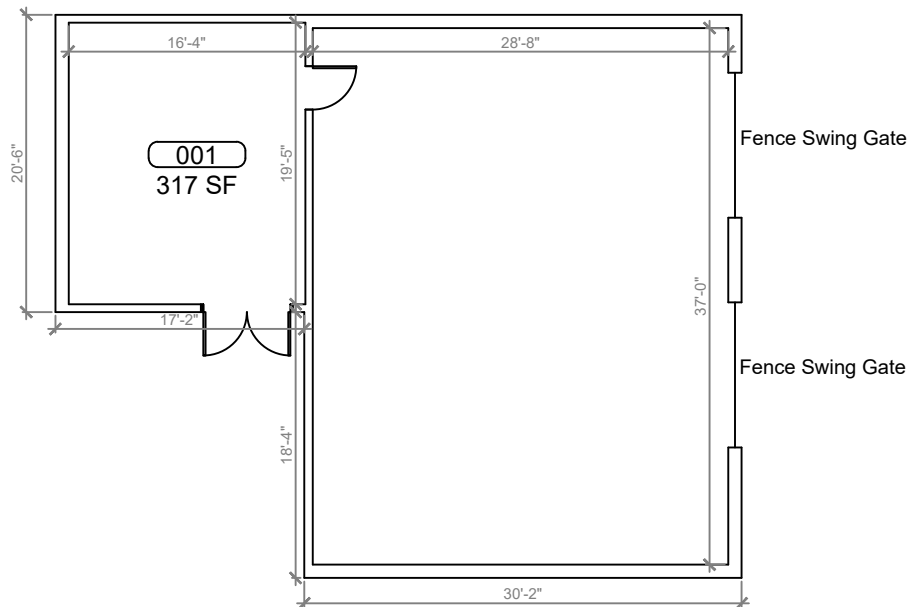
PREPARED BY:
ARCHIS
 350 E. Crown Point Road, Suite 1100
 Winter Garden, FL 34787
 Main: 888.324.2557
 Direct: 407.439.1594

DATE
 , PE
 FL PROFESSIONAL ENGINEER LIC. #

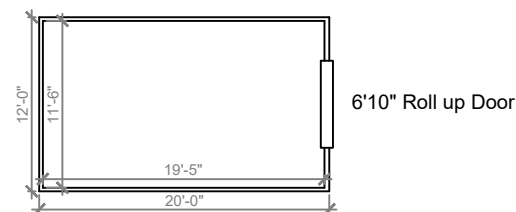
Groveland Elementary School
(FISH PLAN)
 930 Parkwood St,
 Groveland, FL

SHEET DESCRIPTION
BUILDING 08
 SHEET NUMBER
B-07

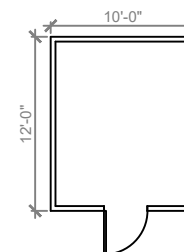
ARCHIS TECHNOLOGIES - \\server-1\H\Archis\21-023 Groveland ES\From ISP\2021-02-08\896_Lake County Fish Survey_Groveland ES.dwg February 9, 2021 00:09:19 PC20



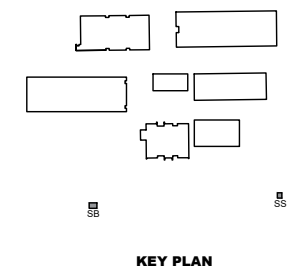
1 BUILDING 10 FLOOR PLAN
B-08 SCALE: 3/16"=1'-0"



2 BUILDING STORAGE BUILDING
B-08 SCALE: 3/16"=1'-0"



3 BUILDING STORAGE SHED
B-08 SCALE: 3/16"=1'-0"



KEY PLAN



REV	DATE	DESCRIPTION
A	02/08/21	PRELIMINARY FISH PLAN
B		
0		
1		
2		
3		
4		
5		
6		

ARCHIS PROJECT NO.:	
DRAWN BY:	CHECKED BY:
VP	CB



158 Terra Mango Loop, Suite B,
Orlando, FL 32835
Main: (407) 293-4168

PREPARED BY:



350 E. Crown Point Road, Suite 1100
Winter Garden, FL 34787
Main: 888.324.2557
Direct: 407.439.1594

DATE

, PE

FL PROFESSIONAL ENGINEER LIC. #

Groveland Elementary School

(FISH PLAN)

930 Parkwood St,
Groveland, FL

SHEET DESCRIPTION

**BUILDING 10,
SB,SS**

SHEET NUMBER

B-08