

FRUITLAND PARK ELEMENTARY SCHOOL



1 AERIAL VIEW
 SP-01 SCALE: N.T.S.



INDEX OF DRAWINGS	
SHT. NO.	DESCRIPTION
SP-01	AERIAL
SP-02	SITE PLAN
B-01	BUILDING 01
B-01.A	BUILDING 01 (PART A)
B-01.B	BUILDING 01 (PART B)
B-02	BUILDING 02 & 03
B-03	BUILDING 12

REV	DATE	DESCRIPTION
A	02/25/21	PRELIMINARY FISH PLAN
B		
0		
1		
2		
3		
4		
5		
6		

ARCHIS PROJECT NO.:

DRAWN BY:	CHECKED BY:
SH	SH



158 Terra Mango Loop, Suite B,
 Orlando, FL 32835
 Main: (407) 293-4168

PREPARED BY:



350 E. Crown Point Road, Suite 1100
 Winter Garden, FL 34787
 Main: 888.324.2557
 Direct: 407.439.1594

DATE

, PE
 FL PROFESSIONAL ENGINEER LIC. #

**Fruitland Park
 Elementary School
 (FISH PLAN)**

304 W, Fountain St,
 Fruitland Park, FL

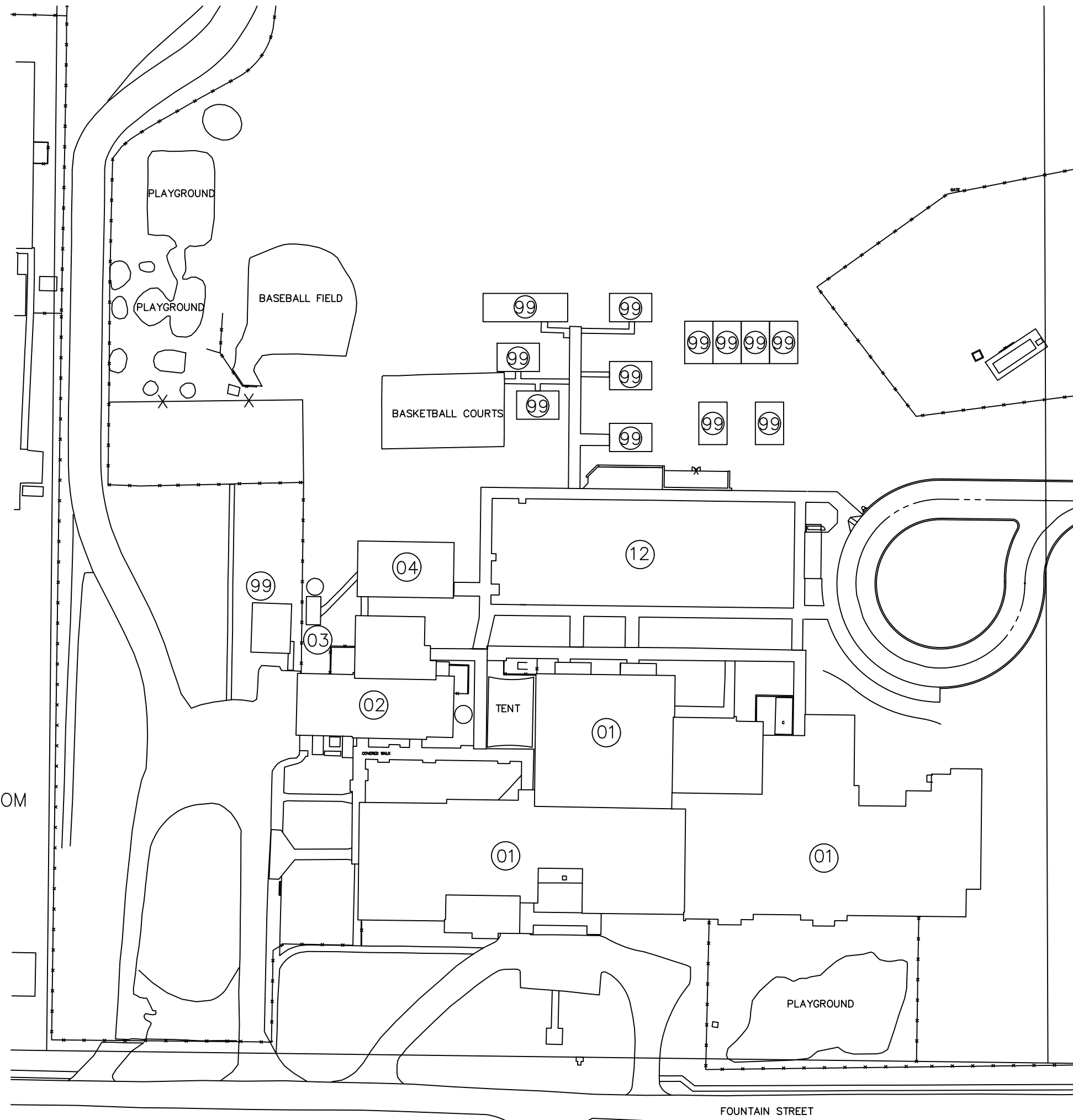
SHEET DESCRIPTION

AERIAL VIEW

SHEET NUMBER

SP-01

server-1\H\Archis\21-030 Fruitland Park ES\From ISP\2021-03-15\896_Lake County_Fish Survey_Fruitland Park ES.dwg March 15, 2021 13:19:32 PC20



LEGEND

- 01- ADMINISTRATION/CLASSROOM
- 02- CAFETERIA
- 04- COVERED PLAY AREA
- 05- STORAGE
- 12- CLASSROOM
- 99- PORTABLES

1 **OVERALL SITE PLAN**
 SP-02 SCALE: 1:32

REV	DATE	DESCRIPTION
A	02/25/21	PRELIMINARY FISH PLAN
B		
0		
1		
2		
3		
4		
5		
6		

ARCHIS PROJECT NO.:
 DRAWN BY: SH CHECKED BY: SH



CM I
 158 Terra Mango Loop, Suite B,
 Orlando, FL 32835
 Main: (407) 293-4168

PREPARED BY:
ARCHIS
 350 E. Crown Point Road, Suite 1100
 Winter Garden, FL 34787
 Main: 888.324.2557
 Direct: 407.439.1594

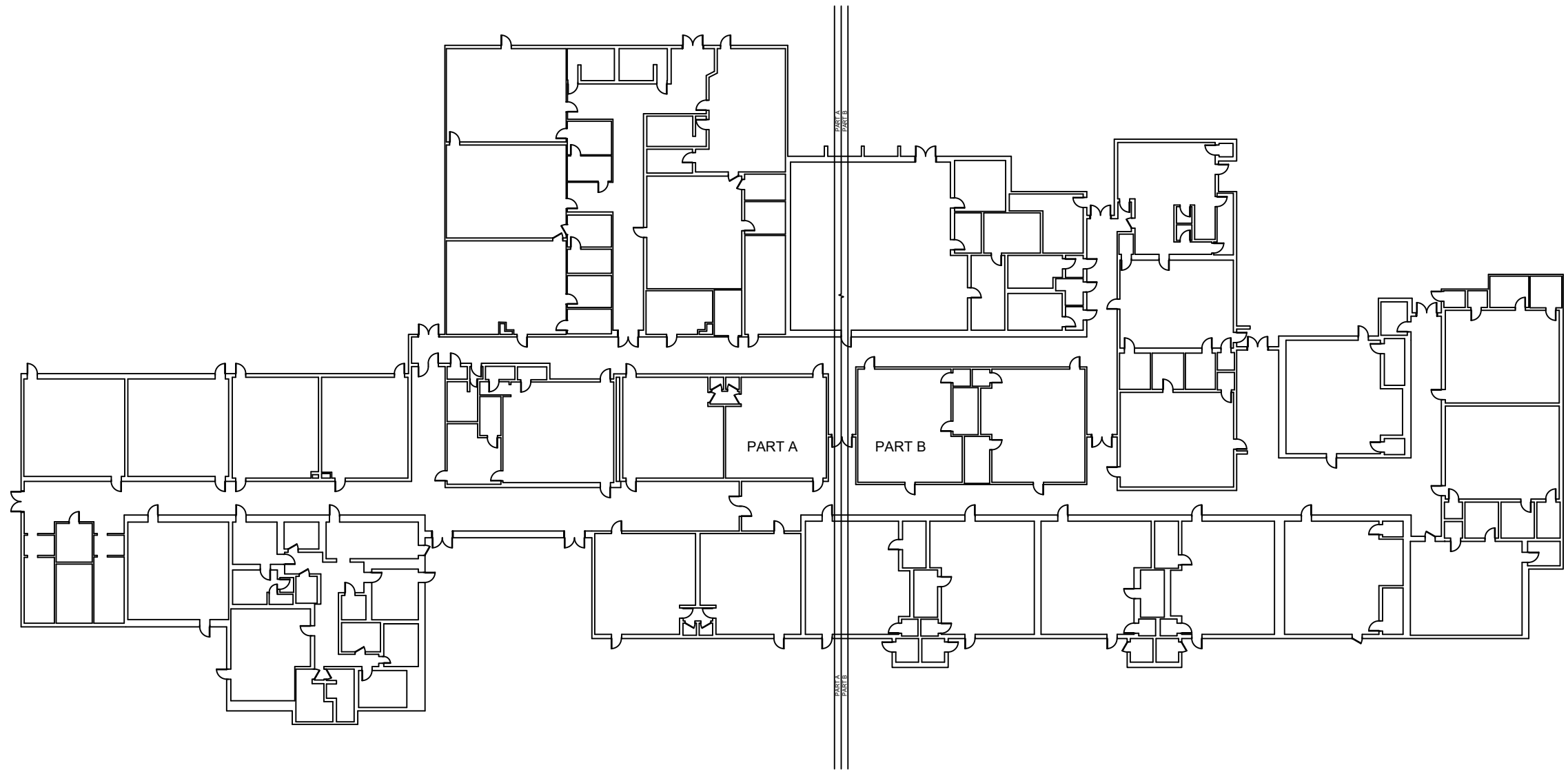
DATE
 , PE
 FL PROFESSIONAL ENGINEER LIC. #

**Fruitland Park
 Elementary School
 (FISH PLAN)**
 304 W, Fountain St,
 Fruitland Park, FL

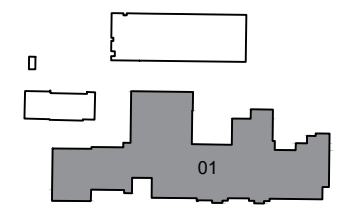
SHEET DESCRIPTION
**OVERALL SITE
 PLAN**

SHEET NUMBER
SP-02

ARCHIS TECHNOLOGIES - \\server-1\H\Archis\21-030 Fruitland Park ES\From ISP\2021-03-15\896_Lake County_Fish Survey_Fruitland Park ES.dwg March 15, 2021 13:19:33 PC20



1
B-01 **BUILDING 01 FLOOR PLAN**
SCALE: 1/16"=1'-0"



KEY PLAN

REV	DATE	DESCRIPTION
A	02/25/21	PRELIMINARY FISH PLAN
B		
0		
1		
2		
3		
4		
5		
6		

ARCHIS PROJECT NO.:

DRAWN BY:	CHECKED BY:
SH	SH



158 Terra Mango Loop, Suite B,
Orlando, FL 32835
Main: (407) 293-4168

PREPARED BY:



350 E. Crown Point Road, Suite 1100
Winter Garden, FL 34787
Main: 888.324.2557
Direct: 407.439.1594

DATE

, PE

FL PROFESSIONAL ENGINEER LIC. #

**Fruitland Park
Elementary School
(FISH PLAN)**

304 W, Fountain St,
Fruitland Park, FL

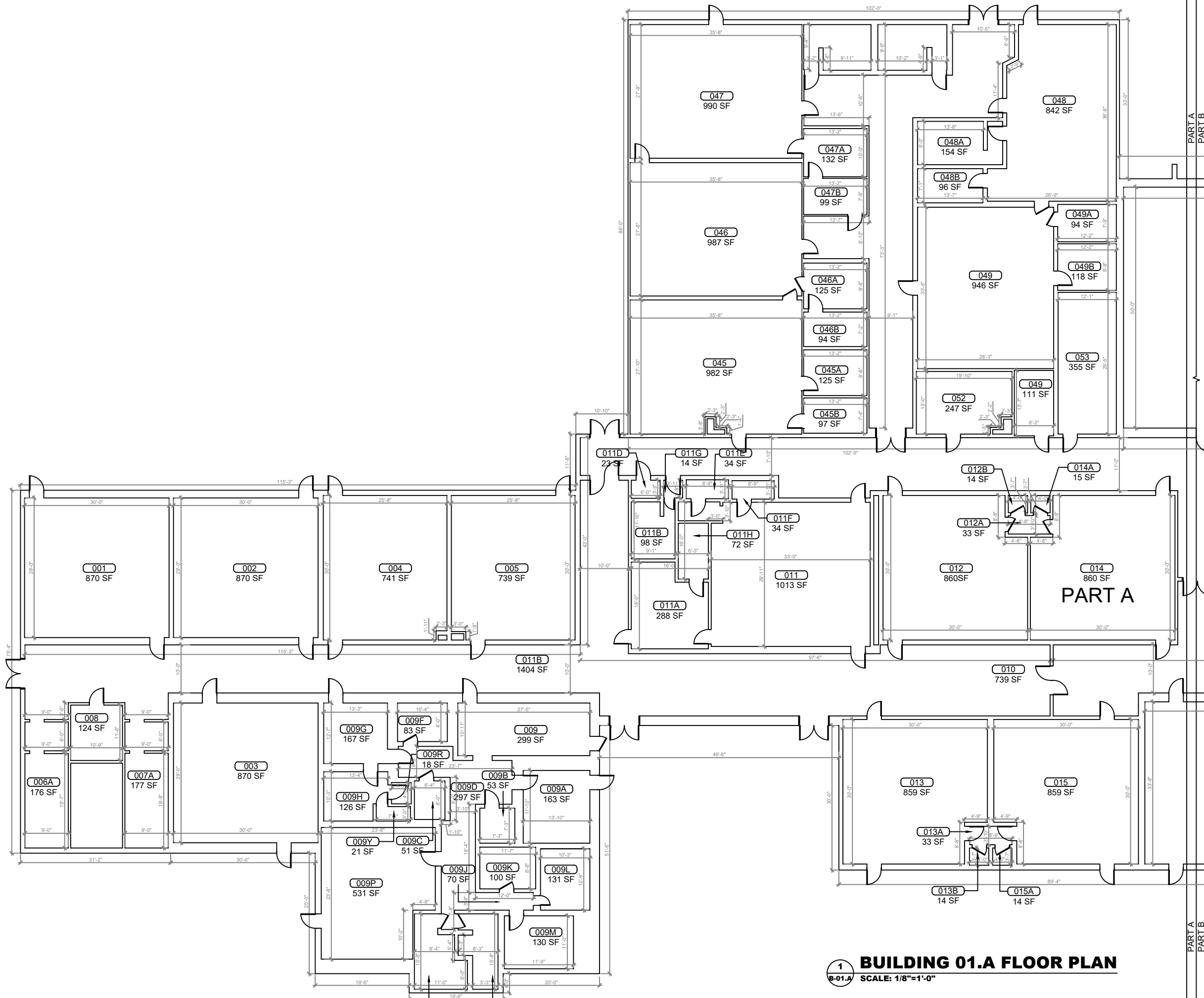
SHEET DESCRIPTION

BUILDING 01

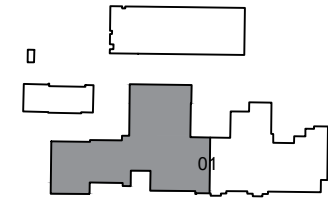
SHEET NUMBER

B-01

ARCHIS TECHNOLOGIES - \\server-1\H\Archis\21-030 Fruitland Park ES\From ISP\2021-03-15\896_Lake County_Fish Survey_Fruitland Park ES.dwg March 15, 2021 13:19:39 PC20



1 BUILDING 01.A FLOOR PLAN
 B-01.A SCALE: 1/8"=1'-0"



KEY PLAN

TRUE NORTH

REV	DATE	DESCRIPTION
A	02/25/21	PRELIMINARY FISH PLAN
B		
0		
1		
2		
3		
4		
5		
6		

ARCHIS PROJECT NO.:
 DRAWN BY: SH CHECKED BY: SH



CM I
 158 Terra Mango Loop, Suite B,
 Orlando, FL 32835
 Main: (407) 293-4168

PREPARED BY:
ARCHIS
 350 E. Crown Point Road, Suite 1100
 Winter Garden, FL 34787
 Main: 888.324.2557
 Direct: 407.439.1594

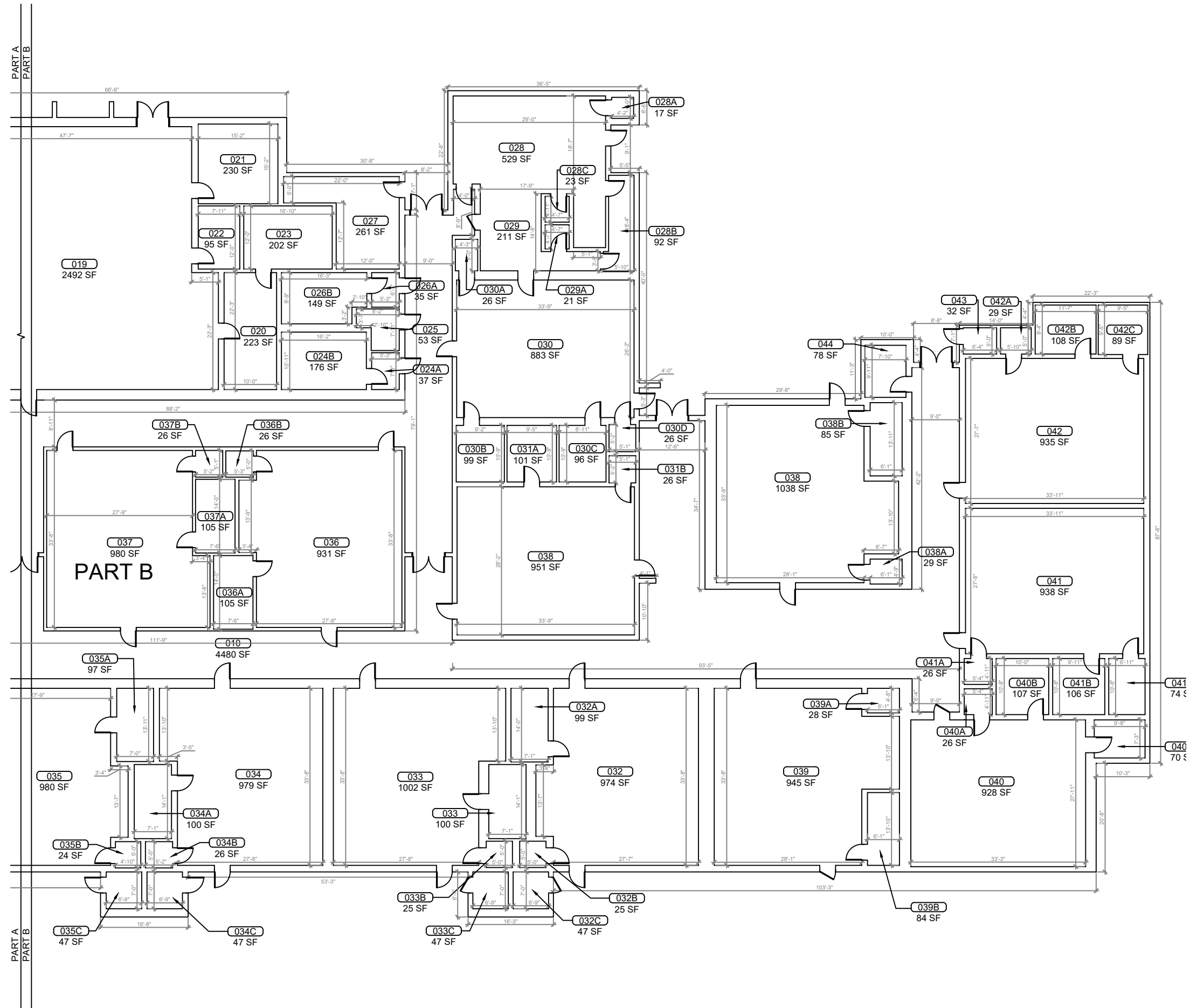
DATE
 , PE
 FL PROFESSIONAL ENGINEER LIC. #

Fruitland Park Elementary School (FISH PLAN)
 304 W, Fountain St,
 Fruitland Park, FL

SHEET DESCRIPTION
BUILDING 01

SHEET NUMBER
B-01.A

ARCHIS TECHNOLOGIES - \\server-1\H\Archis\21-030 Fruitland Park ES\From ISP\2021-03-15\896_Lake County_Fish Survey_Fruitland Park ES.dwg March 15, 2021 13:19:43 PC20



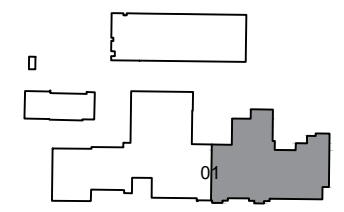
REV	DATE	DESCRIPTION
A	02/25/21	PRELIMINARY FISH PLAN
B		
0		
1		
2		
3		
4		
5		
6		

ARCHIS PROJECT NO.:
 DRAWN BY: SH
 CHECKED BY: SH



CM I
 158 Terra Mango Loop, Suite B,
 Orlando, FL 32835
 Main: (407) 293-4168

PREPARED BY:
ARCHIS
 350 E. Crown Point Road, Suite 1100
 Winter Garden, FL 34787
 Main: 888.324.2557
 Direct: 407.439.1594



1
BUILDING 01.B FLOOR PLAN
 SCALE: 1/8"=1'-0"

KEY PLAN

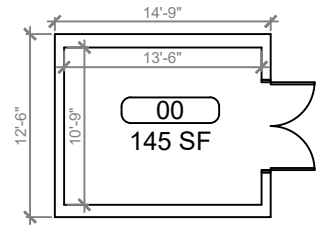
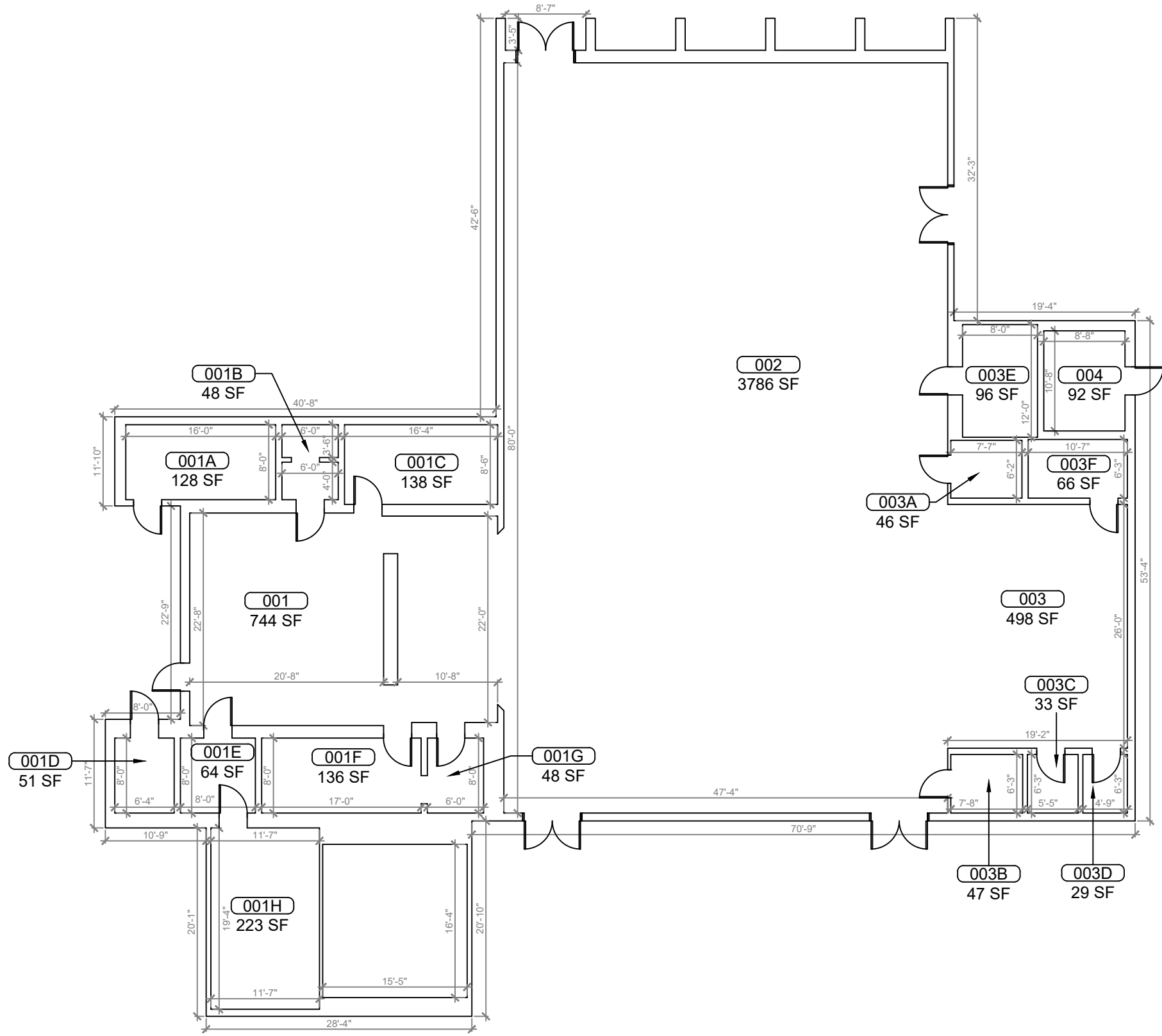
DATE
 PE
 FL PROFESSIONAL ENGINEER LIC. #

Fruitland Park Elementary School (FISH PLAN)
 304 W, Fountain St,
 Fruitland Park, FL

SHEET DESCRIPTION
BUILDING 01

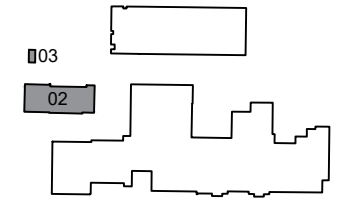
SHEET NUMBER
B-01.B

ARCHIS TECHNOLOGIES - \\server-1\H\Archis\21-030 Fruitland Park ES\21-030 Fruitland Park ES\From ISP\2021-03-15\896_Lake County_Fish Survey_Fruitland Park ES.dwg March 15, 2021 13:19:48 PC20



1
B-02 **BUILDING 02 FLOOR PLAN**
SCALE: 3/16"=1'-0"

2
B-02 **BUILDING 03 FLOOR PLAN**
SCALE: 3/16"=1'-0"



KEY PLAN

REV	DATE	DESCRIPTION
A	02/25/21	PRELIMINARY FISH PLAN
B		
0		
1		
2		
3		
4		
5		
6		

ARCHIS PROJECT NO.:
DRAWN BY: SH
CHECKED BY: SH



C M I
158 Terra Mango Loop, Suite B,
Orlando, FL 32835
Main: (407) 293-4168

PREPARED BY:
ARCHIS
350 E. Crown Point Road, Suite 1100
Winter Garden, FL 34787
Main: 888.324.2557
Direct: 407.439.1594

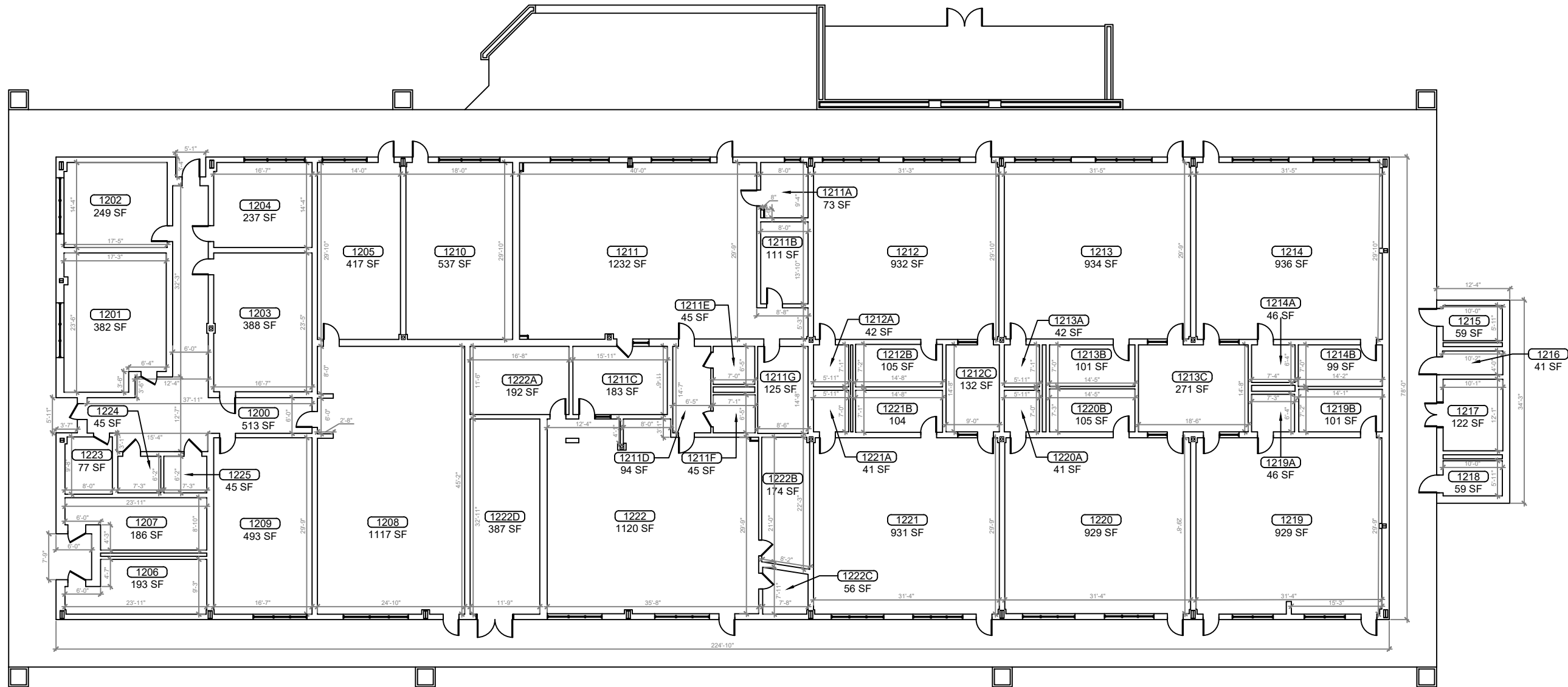
DATE
, PE
FL PROFESSIONAL ENGINEER LIC. #

**Fruitland Park
Elementary School
(FISH PLAN)**
304 W, Fountain St,
Fruitland Park, FL

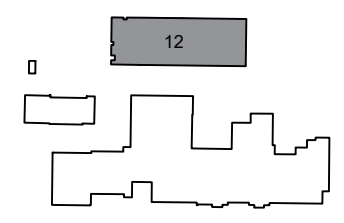
SHEET DESCRIPTION
**BUILDING
02 & 03**

SHEET NUMBER
B-02

ARCHIS TECHNOLOGIES - \\server-1\H\Archis\21-030 Fruitland Park ES\From ISP\2021-03-15\896_Lake County_Fish Survey_Fruitland Park ES.dwg March 15, 2021 13:19:53 PC20



1 BUILDING 12 FLOOR PLAN
 B-03 SCALE: 1/8"=1'-0"



KEY PLAN

REV	DATE	DESCRIPTION
A	02/25/21	PRELIMINARY FISH PLAN
B		
0		
1		
2		
3		
4		
5		
6		

ARCHIS PROJECT NO.:
 DRAWN BY: SH
 CHECKED BY: SH



C M I
 158 Terra Mango Loop, Suite B,
 Orlando, FL 32835
 Main: (407) 293-4168

PREPARED BY:
ARCHIS
 350 E. Crown Point Road, Suite 1100
 Winter Garden, FL 34787
 Main: 888.324.2557
 Direct: 407.439.1594

DATE
 , PE
 FL PROFESSIONAL ENGINEER LIC. #

**Fruitland Park
 Elementary School
 (FISH PLAN)**
 304 W, Fountain St,
 Fruitland Park, FL

SHEET DESCRIPTION
BUILDING 12

SHEET NUMBER
B-03