

EUSTIS MIDDLE SCHOOL

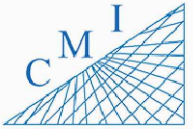


INDEX OF DRAWINGS

SHT. NO.	DESCRIPTION
SP-01	AERIAL
SP-02	SITE PLAN
B-01	BUILDING 01
B-02	BUILDING 02
B-03	BUILDING 03
B-04	BUILDING 04
B-05.1	BUILDING 05 FIRST FLOOR
B-05.2	BUILDING 05 SECOND FLOOR
B-06	BUILDING 06
B-07	BUILDING 07
B-08	BUILDING 08
B-09	BUILDING 09
B-10	BUILDING 10

REV	DATE	DESCRIPTION
A	02/25/21	PRELIMINARY FISH PLAN
B		
0		
1		
2		
3		
4		
5		
6		

ARCHIS PROJECT NO.:	
DRAWN BY: HP	CHECKED BY: SH



158 Terra Mango Loop, Suite B,
Orlando, FL 32835
Main: (407) 293-4168

PREPARED BY:



350 E. Crown Point Road, Suite 1100
Winter Garden, FL 34787
Main: 888.324.2557
Direct: 407.439.1594

DATE

, PE

FL PROFESSIONAL ENGINEER LIC. #

**Eustis Middle School
School
(FISH PLAN)**

18725 Bates Ave,
Eustis, FL 32736

SHEET DESCRIPTION

AERIAL VIEW

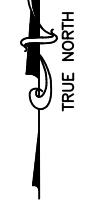
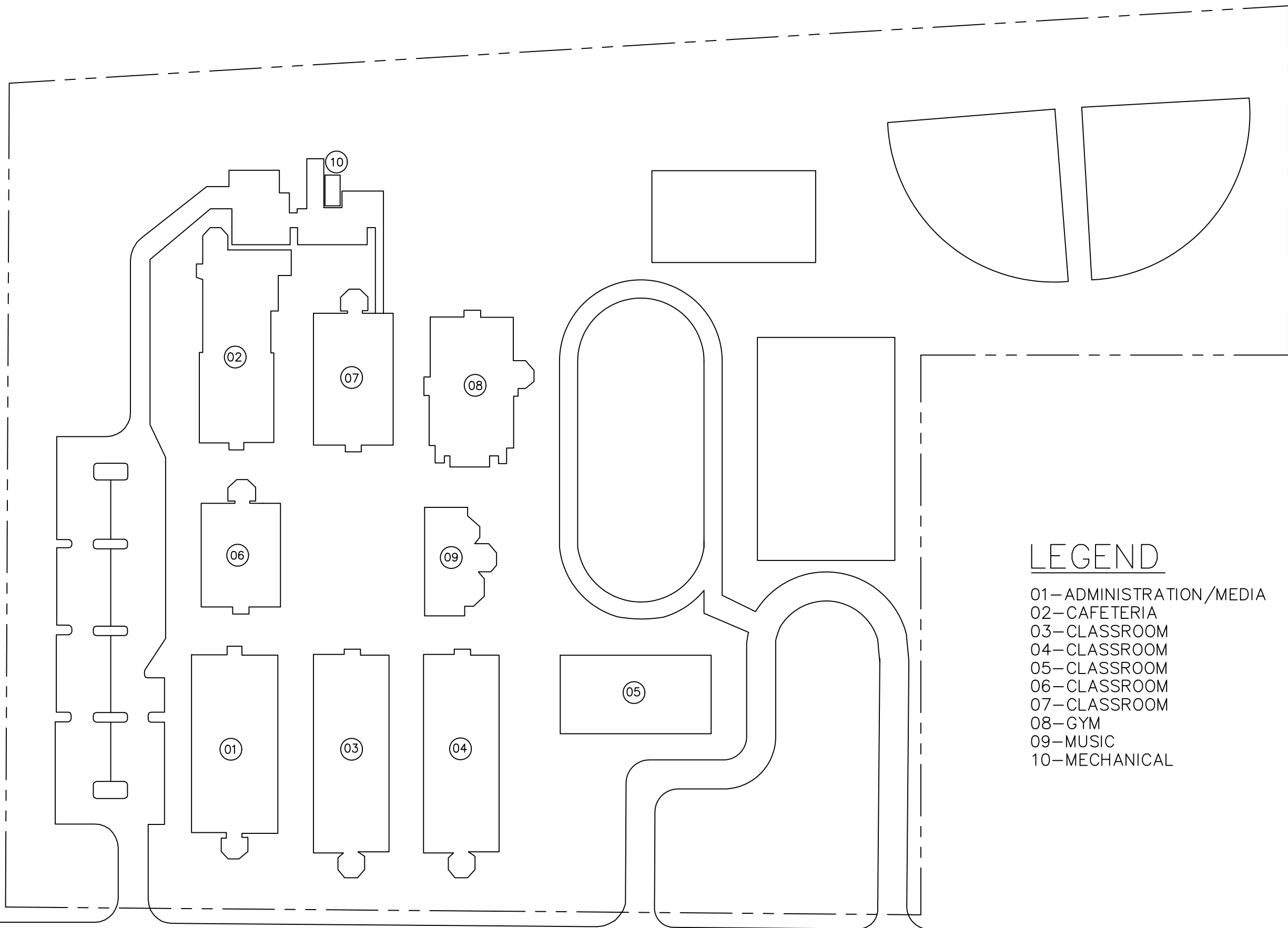
SHEET NUMBER

SP-01

1
SP-01 **AERIAL VIEW**
SCALE: N.T.S.

ARCHIS TECHNOLOGIES - \\server-1\H\Archis\21-033 Eustis MS\From ISP\2021-03-05\896_Lake County_Fish_Survey_Eustis_MS.dwg March 5, 2021 15:04:19 PC20

ARCHIS TECHNOLOGIES - \\server-1\H\Archis\21-033 Eustis MS\From ISP\2021-03-05\896_Lake County_Fish_Survey_Eustis_MS.dwg March 5, 2021 15:04:28 PC20



LEGEND

- 01- ADMINISTRATION/MEDIA
- 02- CAFETERIA
- 03- CLASSROOM
- 04- CLASSROOM
- 05- CLASSROOM
- 06- CLASSROOM
- 07- CLASSROOM
- 08- GYM
- 09- MUSIC
- 10- MECHANICAL

1
OVERALL SITE PLAN
 SCALE: N.T.S.

REV	DATE	DESCRIPTION
A	02/25/21	PRELIMINARY FISH PLAN
B		
0		
1		
2		
3		
4		
5		
6		

ARCHIS PROJECT NO.:

DRAWN BY:	CHECKED BY:
HP	SH



158 Terra Mango Loop, Suite B,
 Orlando, FL 32835
 Main: (407) 293-4168

PREPARED BY:



350 E. Crown Point Road, Suite 1100
 Winter Garden, FL 34787
 Main: 888.324.2557
 Direct: 407.439.1594

DATE
 , PE
 FL PROFESSIONAL ENGINEER LIC. #

Eustis Middle School
(FISH PLAN)
 18725 Bates Ave,
 Eustis, FL 32736

SHEET DESCRIPTION
OVERALL SITE PLAN

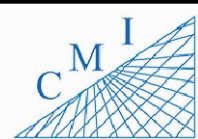
SHEET NUMBER
SP-02

ARCHIS TECHNOLOGIES - \\server-1\H\Archis\21-033 Eustis MS\From ISP\2021-03-05\896_Lake County_Fish_Survey_Eustis_MS.dwg March 5, 2021 15:04:32 PC20



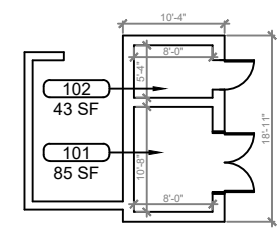
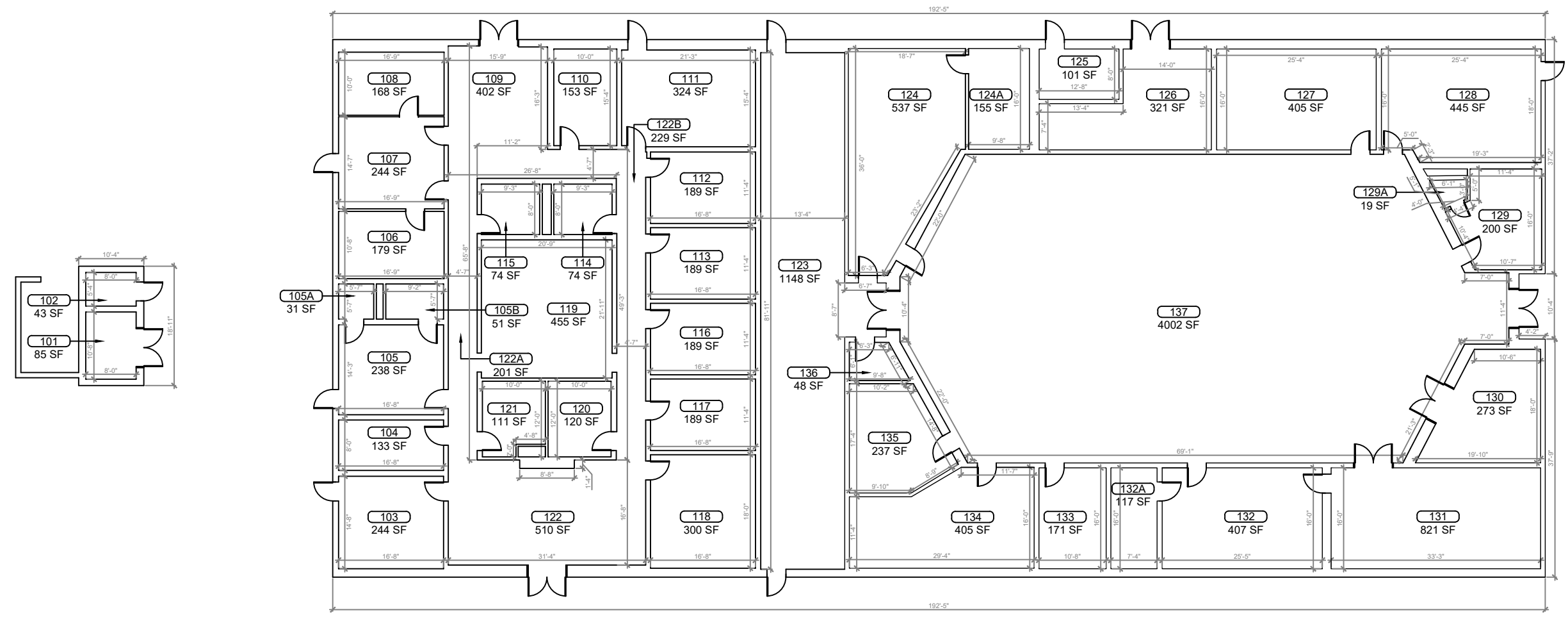
REV	DATE	DESCRIPTION
A	02/25/21	PRELIMINARY FISH PLAN
B		
0		
1		
2		
3		
4		
5		
6		

ARCHIS PROJECT NO.:	
DRAWN BY:	CHECKED BY:
HP	SH

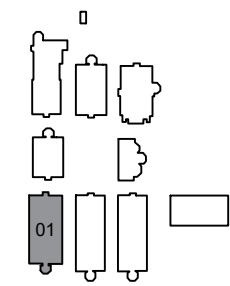


158 Terra Mango Loop, Suite B,
Orlando, FL 32835
Main: (407) 293-4168

PREPARED BY:
ARCHIS
350 E. Crown Point Road, Suite 1100
Winter Garden, FL 34787
Main: 888.324.2557
Direct: 407.439.1594



1 BUILDING 01 FLOOR PLAN
SCALE: 1/8"=1'-0"



KEY PLAN

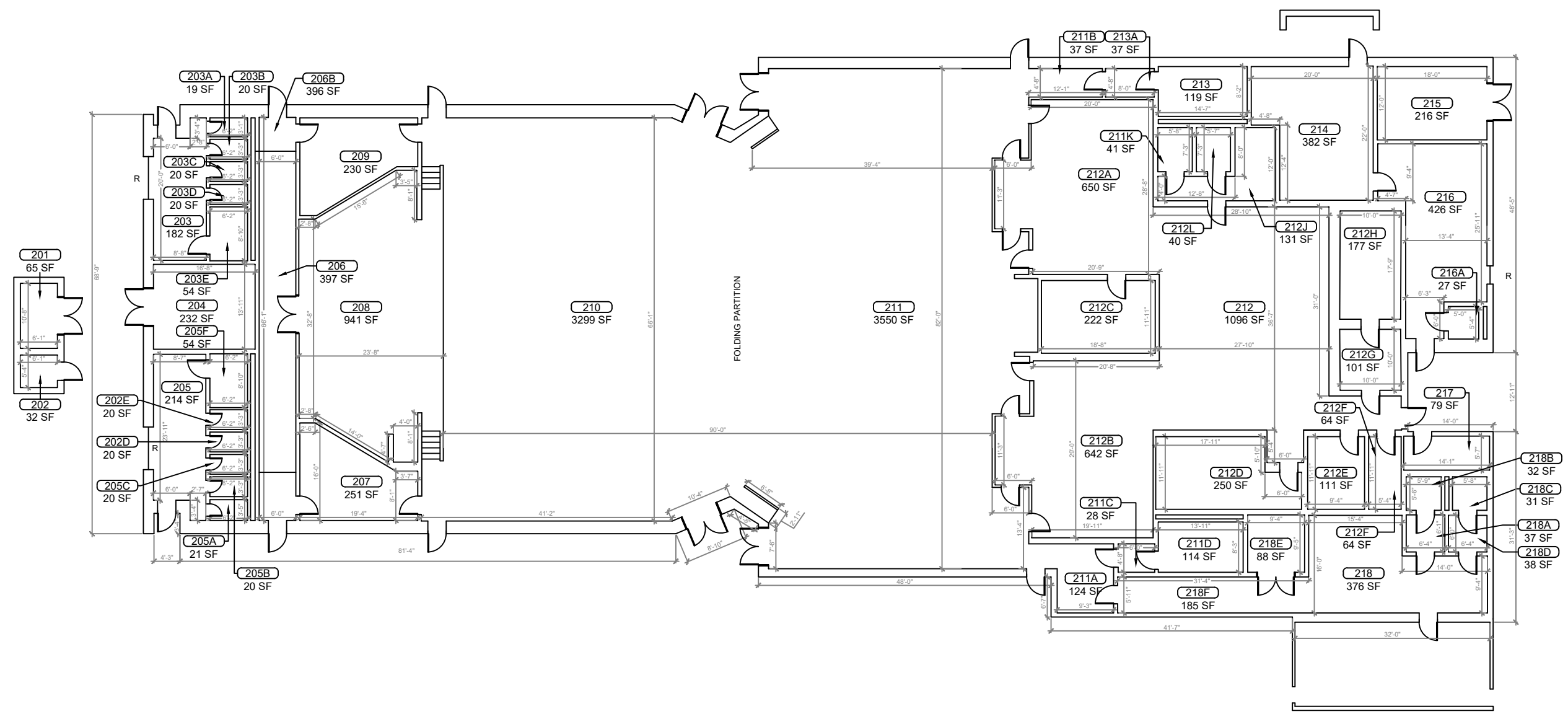
DATE
, PE
FL PROFESSIONAL ENGINEER LIC. #

Eustis Middle School
(FISH PLAN)
18725 Bates Ave,
Eustis, FL 32736

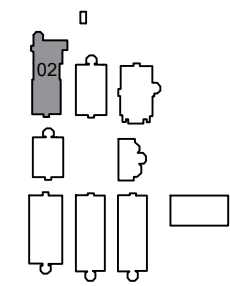
SHEET DESCRIPTION
BUILDING 01

SHEET NUMBER
B-01

ARCHIS TECHNOLOGIES - \\server-1\H\Archis\21-033 Eustis MS\From ISP\2021-03-05\896_Lake County_Fish Survey_Eustis MS.dwg March 5, 2021 15:04:37 PC20



1 BUILDING 02 FLOOR PLAN
SCALE: 1/8"=1'-0"



KEY PLAN

REV	DATE	DESCRIPTION
A	02/25/21	PRELIMINARY FISH PLAN
B		
0		
1		
2		
3		
4		
5		
6		

ARCHIS PROJECT NO.:	
DRAWN BY: HP	CHECKED BY: SH



CMI
158 Terra Mango Loop, Suite B,
Orlando, FL 32835
Main: (407) 293-4168

PREPARED BY:
ARCHIS
350 E. Crown Point Road, Suite 1100
Winter Garden, FL 34787
Main: 888.324.2557
Direct: 407.439.1594

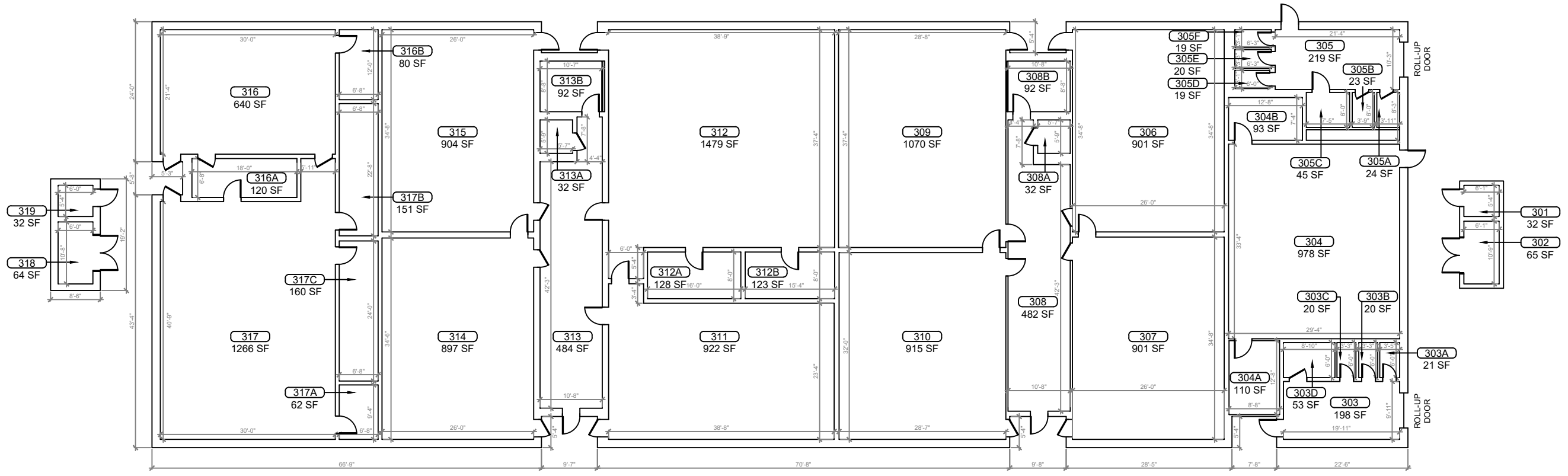
DATE
_____, PE
FL PROFESSIONAL ENGINEER LIC. #

Eustis Middle School
(FISH PLAN)
18725 Bates Ave,
Eustis, FL 32736
SHEET DESCRIPTION

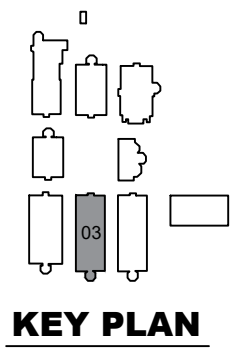
BUILDING 02

SHEET NUMBER
B-02

ARCHIS TECHNOLOGIES - \\server-1\H\Archis\21-033 Eustis MS\From ISP\2021-03-05\896_Lake County_Fish Survey_Eustis MS.dwg March 5, 2021 15:04:42 PC20



1 BUILDING 03 FLOOR PLAN
B-03 SCALE: 1/8"=1'-0"



REV	DATE	DESCRIPTION
A	02/25/21	PRELIMINARY FISH PLAN
B		
0		
1		
2		
3		
4		
5		
6		

ARCHIS PROJECT NO.:

DRAWN BY:	CHECKED BY:
HP	SH



CMI
 158 Terra Mango Loop, Suite B,
 Orlando, FL 32835
 Main: (407) 293-4168

PREPARED BY:
ARCHIS
 350 E. Crown Point Road, Suite 1100
 Winter Garden, FL 34787
 Main: 888.324.2557
 Direct: 407.439.1594

DATE
 , PE
 FL PROFESSIONAL ENGINEER LIC. #

Eustis Middle School
(FISH PLAN)
 18725 Bates Ave,
 Eustis, FL 32736

SHEET DESCRIPTION
BUILDING 03

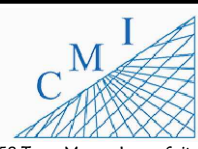
SHEET NUMBER
B-03

ARCHIS TECHNOLOGIES - \\server-1\H\Archis\21-033 Eustis MS\From ISP\2021-03-05\896_Lake County_Fish Survey_Eustis MS.dwg March 5, 2021 15:04:47 PC20



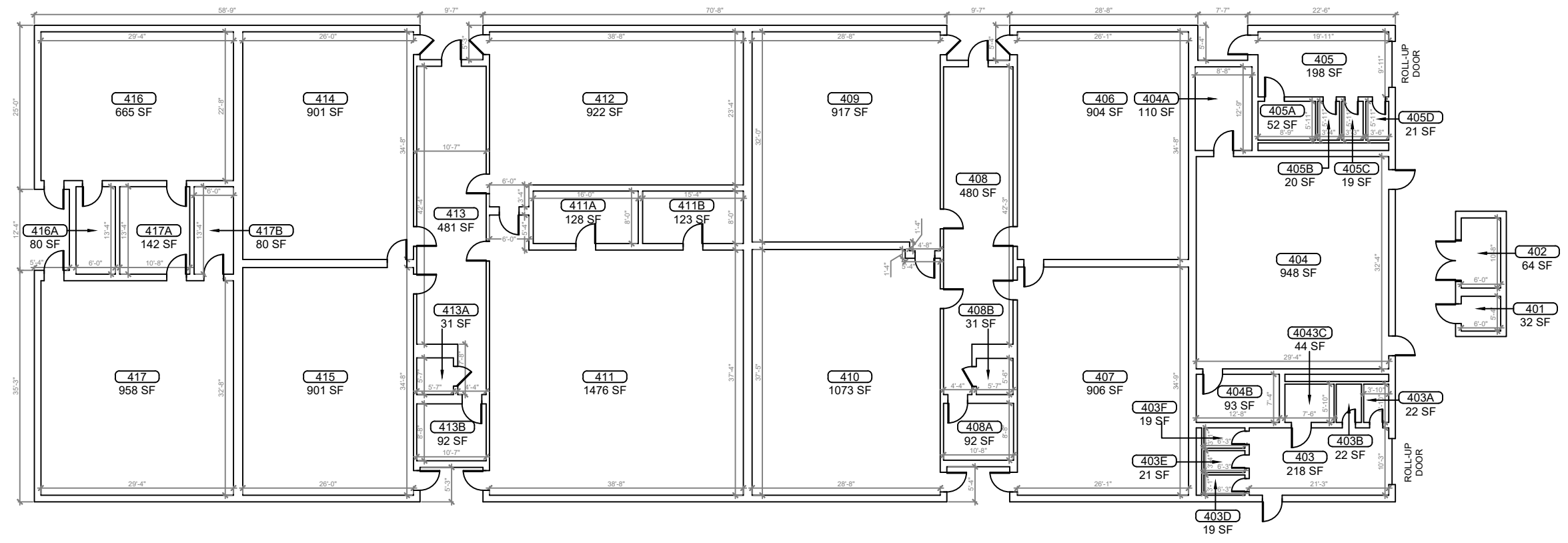
REV	DATE	DESCRIPTION
A	02/25/21	PRELIMINARY FISH PLAN
B		
0		
1		
2		
3		
4		
5		
6		

ARCHIS PROJECT NO.:	
DRAWN BY:	CHECKED BY:
HP	SH

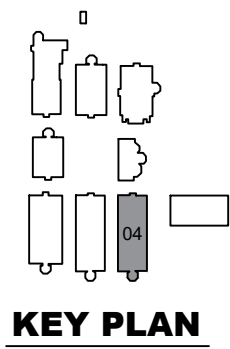


158 Terra Mango Loop, Suite B,
Orlando, FL 32835
Main: (407) 293-4168

PREPARED BY:
ARCHIS
350 E. Crown Point Road, Suite 1100
Winter Garden, FL 34787
Main: 888.324.2557
Direct: 407.439.1594



1 BUILDING 04 FLOOR PLAN
SCALE: 1/8"=1'-0"



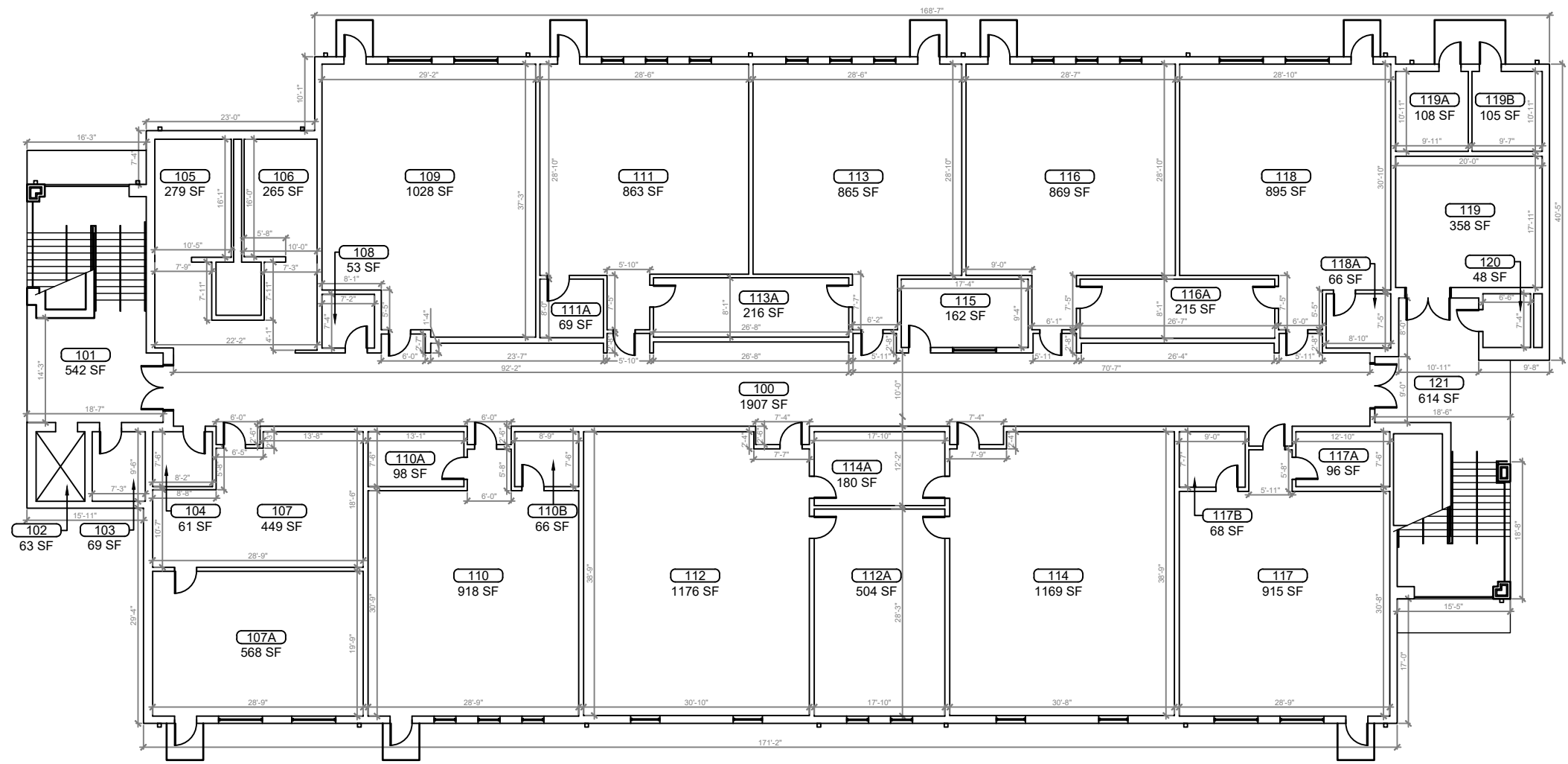
DATE
_____, PE
FL PROFESSIONAL ENGINEER LIC. #

Eustis Middle School
(FISH PLAN)
18725 Bates Ave,
Eustis, FL 32736

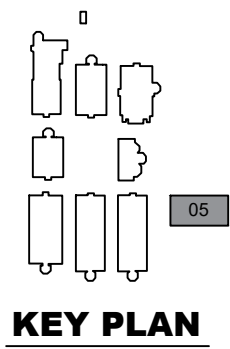
SHEET DESCRIPTION
BUILDING 04

SHEET NUMBER
B-04

ARCHIS TECHNOLOGIES - \\server-1\H\Archis\21-033 Eustis MS\From ISP\2021-03-05\896_Lake County_Fish Survey_Eustis MS.dwg March 5, 2021 15:04:52 PC20

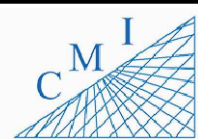


1 BUILDING 05 FIRST FLOOR PLAN
 8-05.1 SCALE: 1/8"=1'-0"



REV	DATE	DESCRIPTION
A	02/25/21	PRELIMINARY FISH PLAN
B		
0		
1		
2		
3		
4		
5		
6		

ARCHIS PROJECT NO.:	
DRAWN BY:	CHECKED BY:
HP	SH



158 Terra Mango Loop, Suite B,
 Orlando, FL 32835
 Main: (407) 293-4168

PREPARED BY:



350 E. Crown Point Road, Suite 1100
 Winter Garden, FL 34787
 Main: 888.324.2557
 Direct: 407.439.1594

DATE

, PE

FL PROFESSIONAL ENGINEER LIC. #

Eustis Middle School

(FISH PLAN)

18725 Bates Ave,
 Eustis, FL 32736

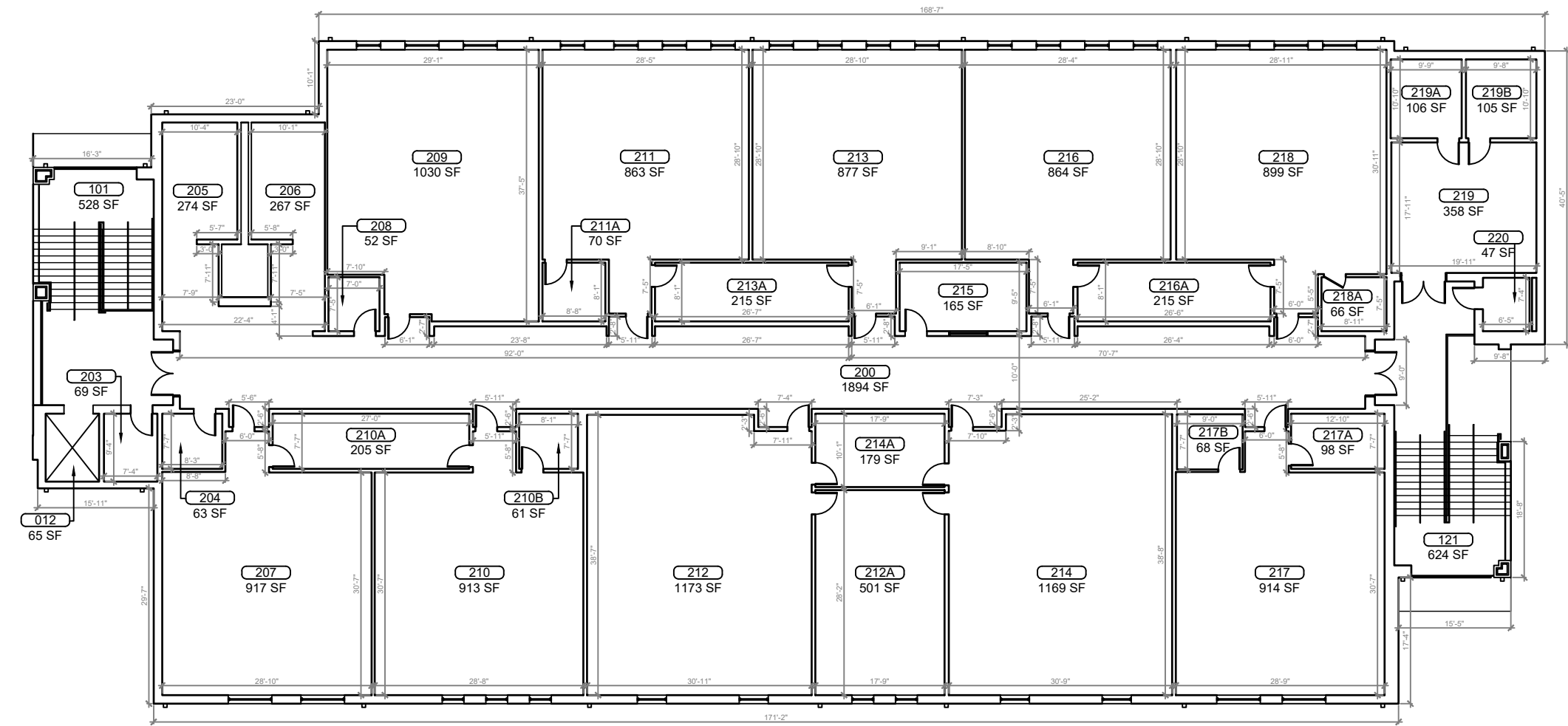
SHEET DESCRIPTION

BUILDING 05

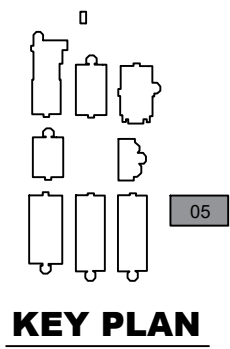
SHEET NUMBER

B-05.1

ARCHIS TECHNOLOGIES - \\server-1\H\Archis\21-033 Eustis MS\From ISP\2021-03-05\896_Lake County_Fish_Survey_Eustis_MS.dwg March 5, 2021 15:04:57 PC20



1 BUILDING 05 SECOND FLOOR PLAN
B-05.2 SCALE: 1/8"=1'-0"



REV	DATE	DESCRIPTION
A	02/25/21	PRELIMINARY FISH PLAN
B		
0		
1		
2		
3		
4		
5		
6		

ARCHIS PROJECT NO.:	
DRAWN BY: HP	CHECKED BY: SH



CMI
 158 Terra Mango Loop, Suite B,
 Orlando, FL 32835
 Main: (407) 293-4168

PREPARED BY:
ARCHIS
 350 E. Crown Point Road, Suite 1100
 Winter Garden, FL 34787
 Main: 888.324.2557
 Direct: 407.439.1594

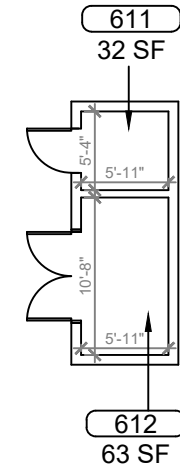
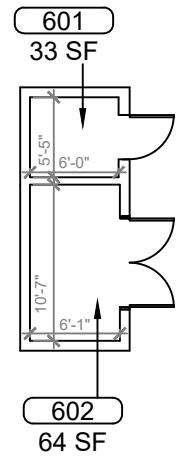
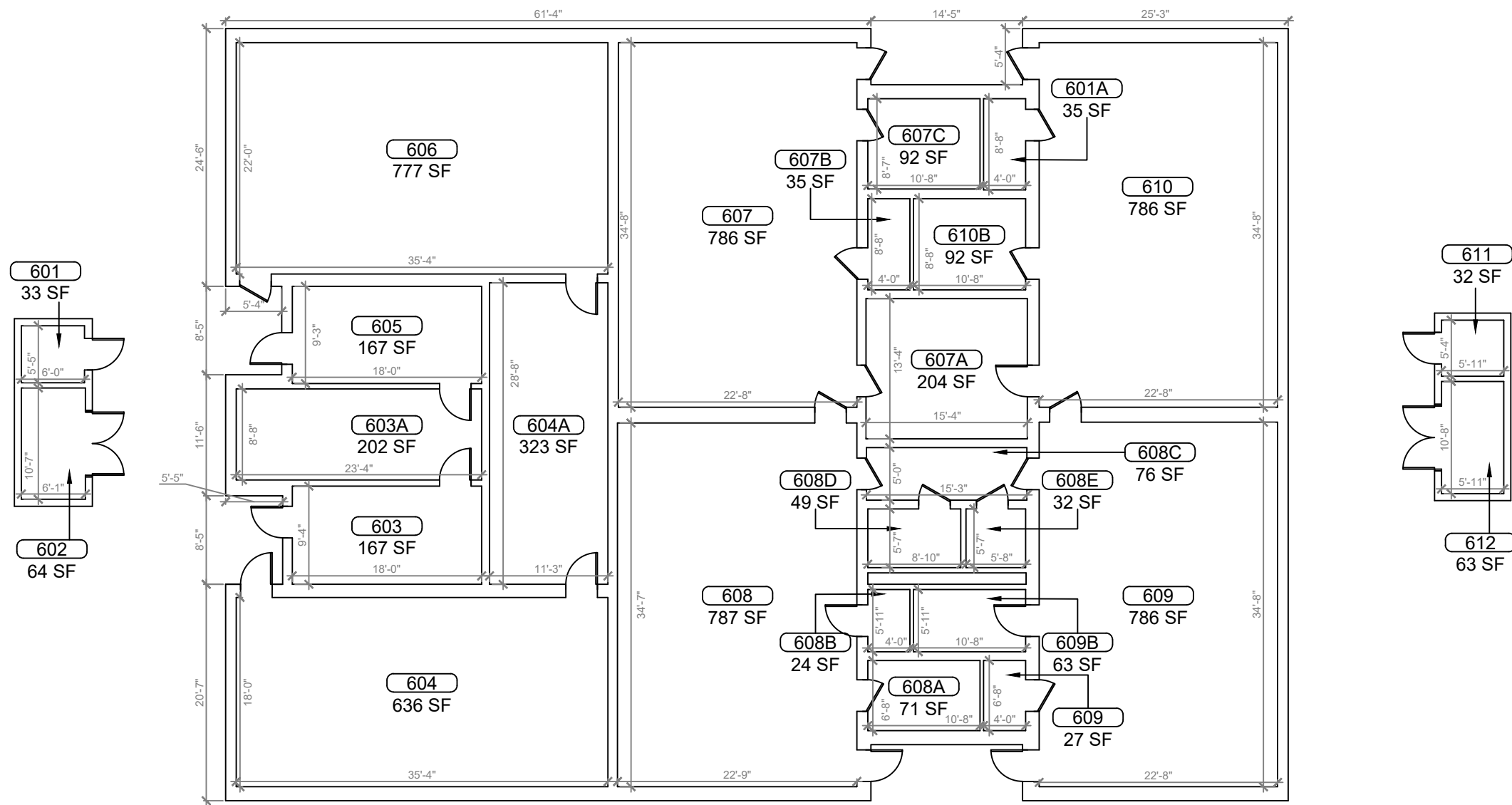
DATE
 , PE
 FL PROFESSIONAL ENGINEER LIC. #

Eustis Middle School
(FISH PLAN)
 18725 Bates Ave,
 Eustis, FL 32736

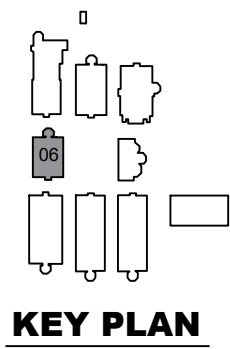
SHEET DESCRIPTION
BUILDING 05

SHEET NUMBER
B-05.2

ARCHIS TECHNOLOGIES - \\server-1\H\Archis\21-03-05\896_Lake County_Fish_Survey_Eustis_MS.dwg March 5, 2021 15:05:02 PC20



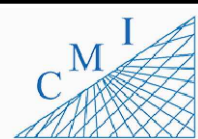
1 BUILDING 06 FLOOR PLAN
 B-06 SCALE: 3/16"=1'-0"



KEY PLAN

REV	DATE	DESCRIPTION
A	02/25/21	PRELIMINARY FISH PLAN
B		
0		
1		
2		
3		
4		
5		
6		

ARCHIS PROJECT NO.:	
DRAWN BY:	CHECKED BY:
HP	SH



158 Terra Mango Loop, Suite B,
 Orlando, FL 32835
 Main: (407) 293-4168

PREPARED BY:



350 E. Crown Point Road, Suite 1100
 Winter Garden, FL 34787
 Main: 888.324.2557
 Direct: 407.439.1594

DATE

, PE

FL PROFESSIONAL ENGINEER LIC. #

Eustis Middle School
(FISH PLAN)
 18725 Bates Ave,
 Eustis, FL 32736

SHEET DESCRIPTION

BUILDING 06

SHEET NUMBER

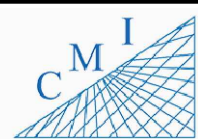
B-06

ARCHIS TECHNOLOGIES - \\server-1\H\Archis\21-033 Eustis MS\From ISP\2021-03-05\896_Lake County_Fish Survey_Eustis MS.dwg March 5, 2021 15:05:07 PC20



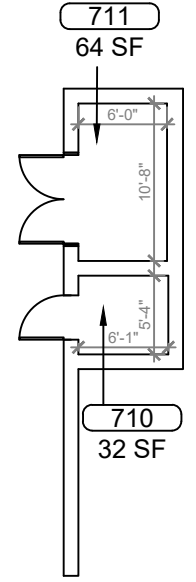
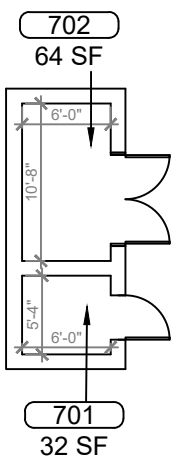
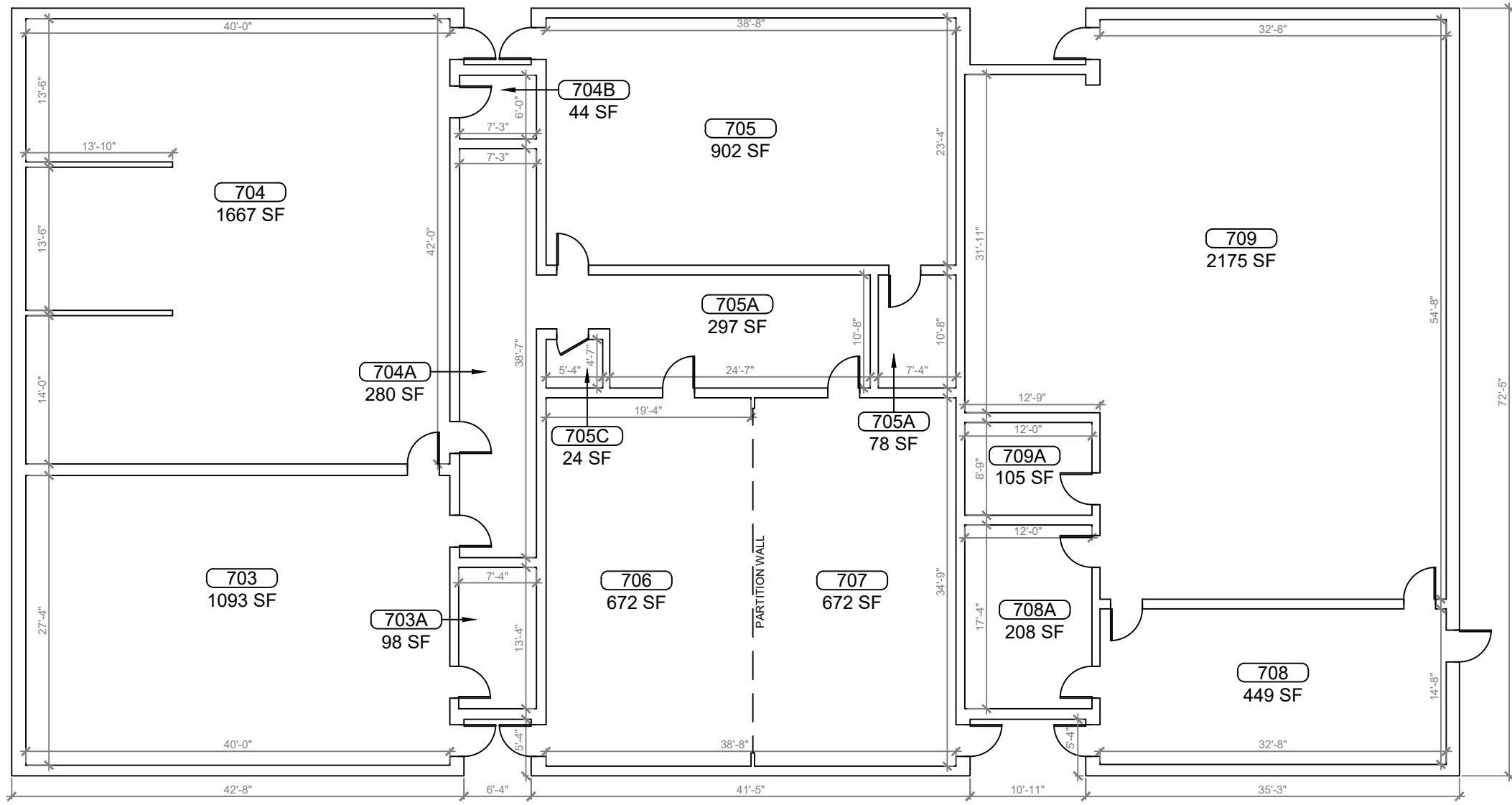
REV	DATE	DESCRIPTION
A	02/25/21	PRELIMINARY FISH PLAN
B		
0		
1		
2		
3		
4		
5		
6		

ARCHIS PROJECT NO.:	
DRAWN BY:	CHECKED BY:
HP	SH

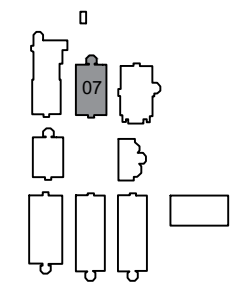


158 Terra Mango Loop, Suite B,
Orlando, FL 32835
Main: (407) 293-4168

PREPARED BY:
ARCHIS
350 E. Crown Point Road, Suite 1100
Winter Garden, FL 34787
Main: 888.324.2557
Direct: 407.439.1594



1
B-07 **BUILDING 07 FLOOR PLAN**
SCALE: 3/16"=1'-0"



KEY PLAN

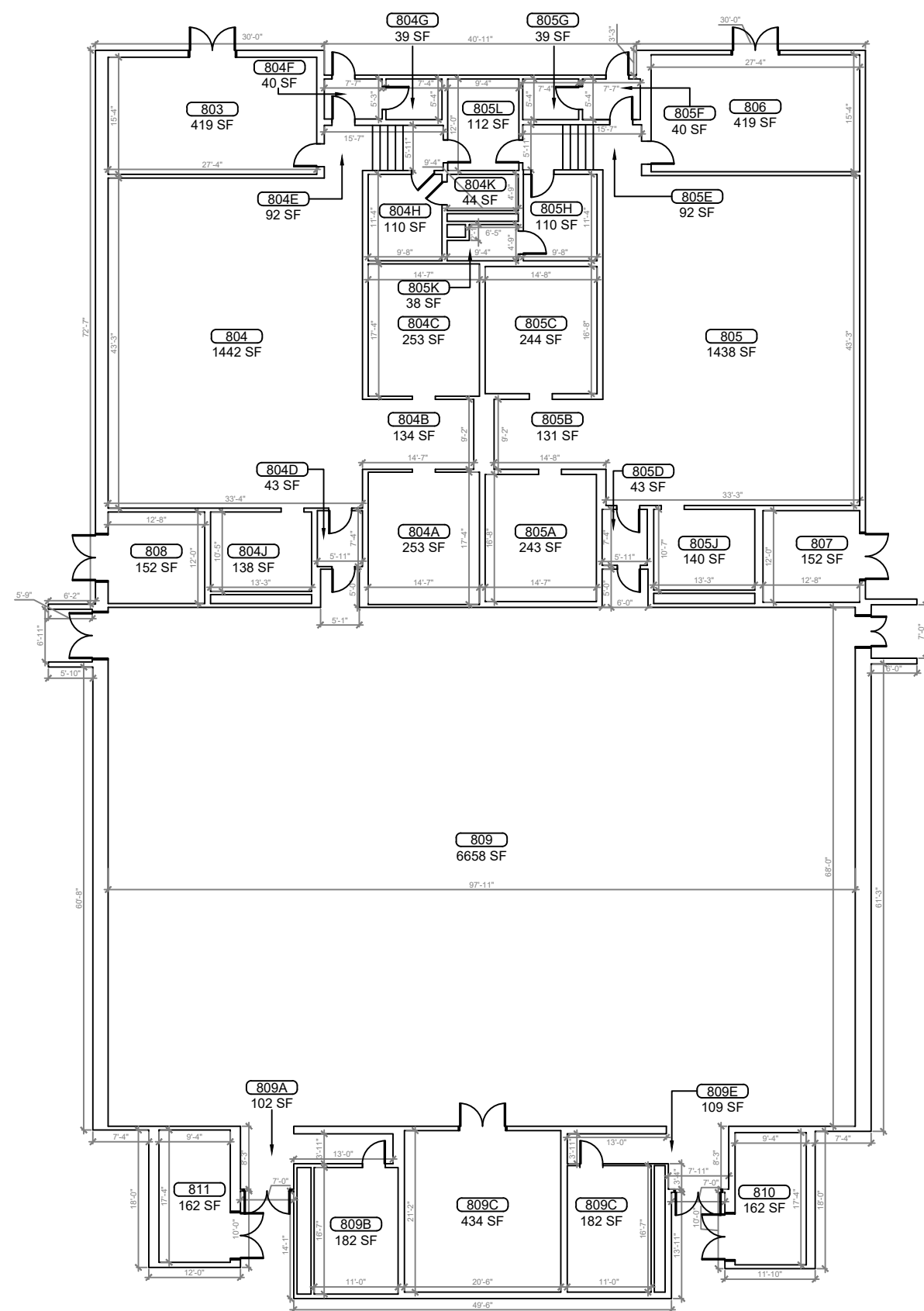
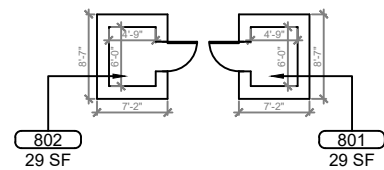
DATE
, PE
FL PROFESSIONAL ENGINEER LIC. #

Eustis Middle School
(FISH PLAN)
18725 Bates Ave,
Eustis, FL 32736

SHEET DESCRIPTION
BUILDING 07

SHEET NUMBER
B-07

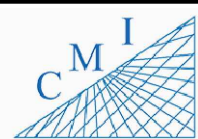
ARCHIS TECHNOLOGIES - \\server-1\H\Archis\21-033 Eustis MS\From ISP\2021-03-05\896_Lake County_Fish_Survey_Eustis_MS.dwg March 5, 2021 15:05:12 PC20



REV	DATE	DESCRIPTION
A	02/25/21	PRELIMINARY FISH PLAN
B		
0		
1		
2		
3		
4		
5		
6		

ARCHIS PROJECT NO.:

DRAWN BY:	CHECKED BY:
HP	SH



158 Terra Mango Loop, Suite B,
Orlando, FL 32835
Main: (407) 293-4168

PREPARED BY:

ARCHIS

350 E. Crown Point Road, Suite 1100
Winter Garden, FL 34787
Main: 888.324.2557
Direct: 407.439.1594

DATE _____

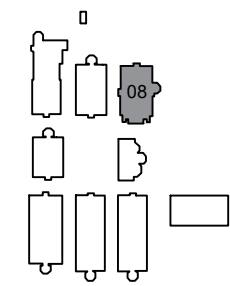
_____, PE

FL PROFESSIONAL ENGINEER LIC. # _____

Eustis Middle School
(FISH PLAN)
18725 Bates Ave,
Eustis, FL 32736

SHEET DESCRIPTION
BUILDING 08

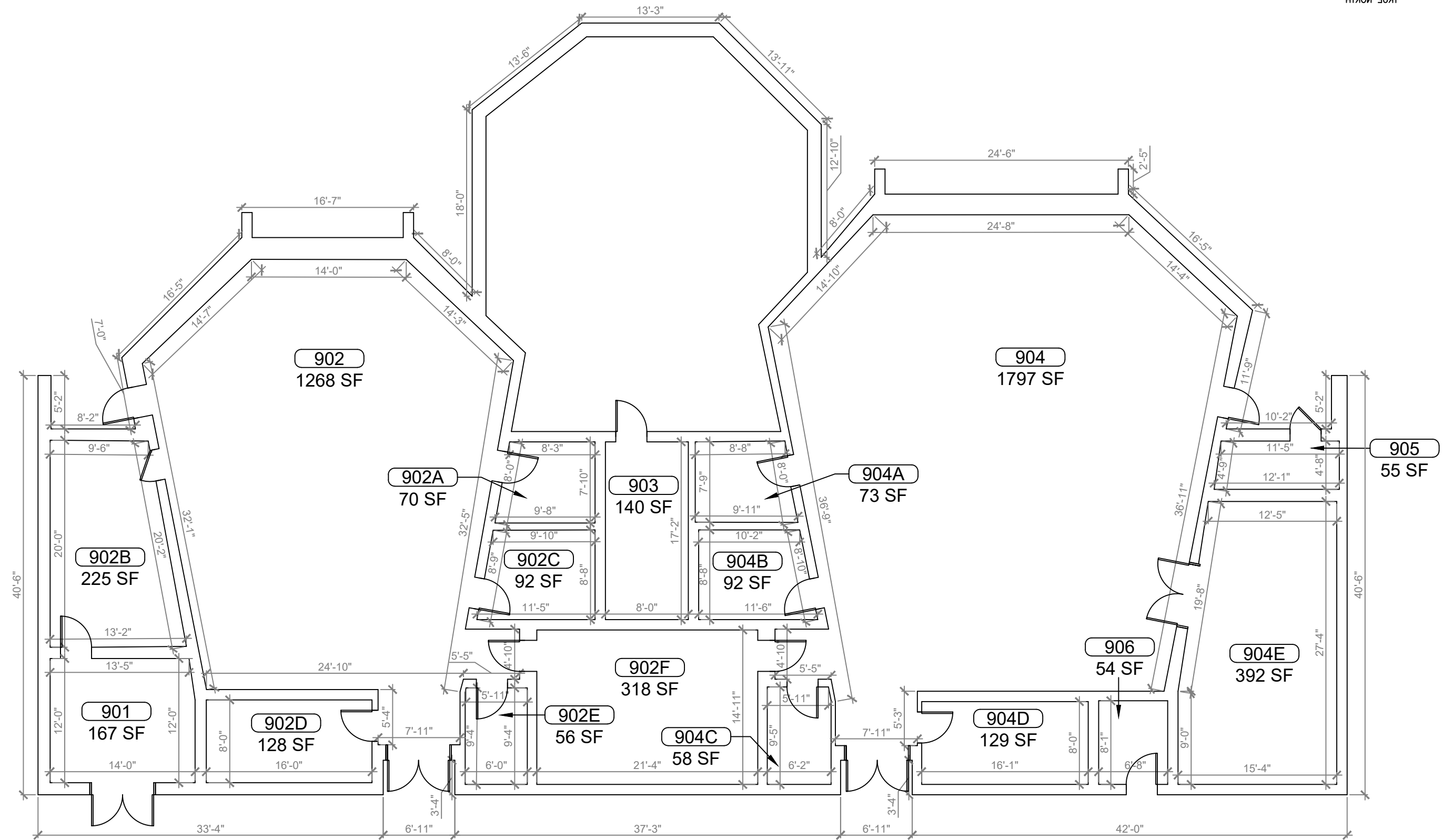
SHEET NUMBER
B-08



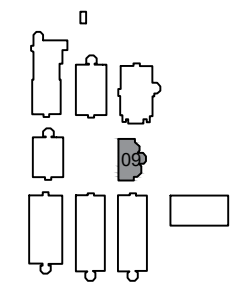
KEY PLAN

1 BUILDING 08 FLOOR PLAN
B-08 SCALE: 1/8"=1'-0"

ARCHIS TECHNOLOGIES - \\server-1\H\Archis\21-033 Eustis MS\From ISP\2021-03-05\896_Lake County_Fish_Survey_Eustis_MS.dwg March 5, 2021 15:05:17 PC20



1 BUILDING 09 FLOOR PLAN
 B-09 SCALE: 1/4"=1'-0"



KEY PLAN

REV	DATE	DESCRIPTION
A	02/25/21	PRELIMINARY FISH PLAN
B		
0		
1		
2		
3		
4		
5		
6		

ARCHIS PROJECT NO.:	
DRAWN BY: HP	CHECKED BY: SH



158 Terra Mango Loop, Suite B,
 Orlando, FL 32835
 Main: (407) 293-4168

PREPARED BY:
ARCHIS
 350 E. Crown Point Road, Suite 1100
 Winter Garden, FL 34787
 Main: 888.324.2557
 Direct: 407.439.1594

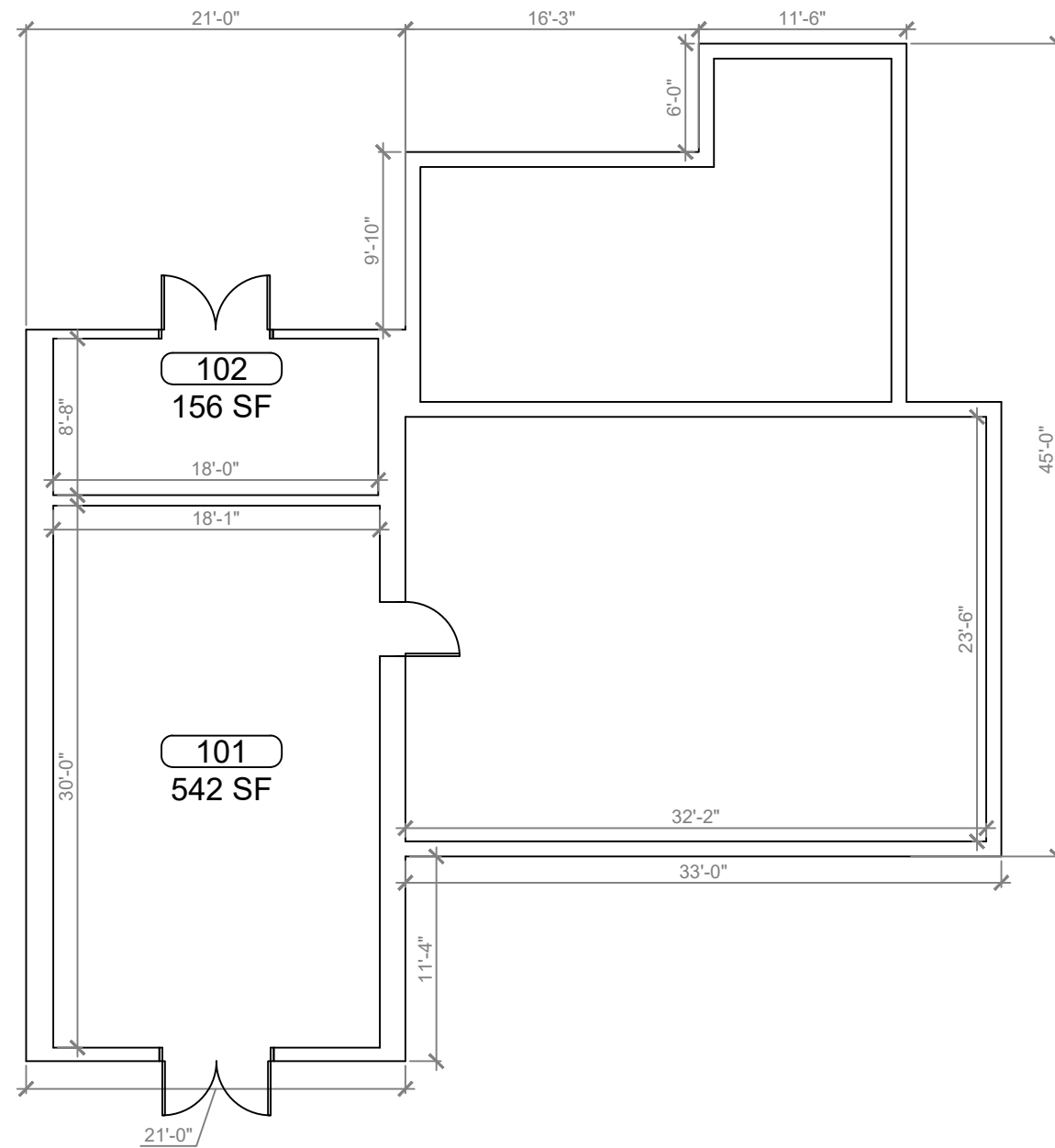
DATE
 , PE
 FL PROFESSIONAL ENGINEER LIC. #

Eustis Middle School
(FISH PLAN)
 18725 Bates Ave,
 Eustis, FL 32736

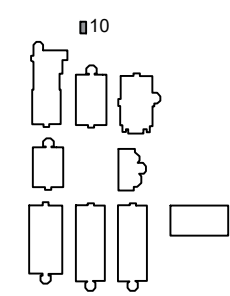
SHEET DESCRIPTION
BUILDING 09

SHEET NUMBER
B-09

ARCHIS TECHNOLOGIES - \\server-1\H\Archis\21-03-033 Eustis MS\From ISP\2021-03-05\896_Lake County_Fish Survey_Eustis MS.dwg March 5, 2021 15:05:22 PC20



1
B-10 **BUILDING 10 FLOOR PLAN**
SCALE: 1/4"=1'-0"



KEY PLAN

REV	DATE	DESCRIPTION
A	02/25/21	PRELIMINARY FISH PLAN
B		
0		
1		
2		
3		
4		
5		
6		

ARCHIS PROJECT NO.:	
DRAWN BY:	CHECKED BY:
HP	SH



PREPARED BY:

350 E. Crown Point Road, Suite 1100
Winter Garden, FL 34787
Main: 888.324.2557
Direct: 407.439.1594

DATE
, PE
FL PROFESSIONAL ENGINEER LIC. #

Eustis Middle School
(FISH PLAN)
18725 Bates Ave,
Eustis, FL 32736

SHEET DESCRIPTION
BUILDING 10

SHEET NUMBER
B-10