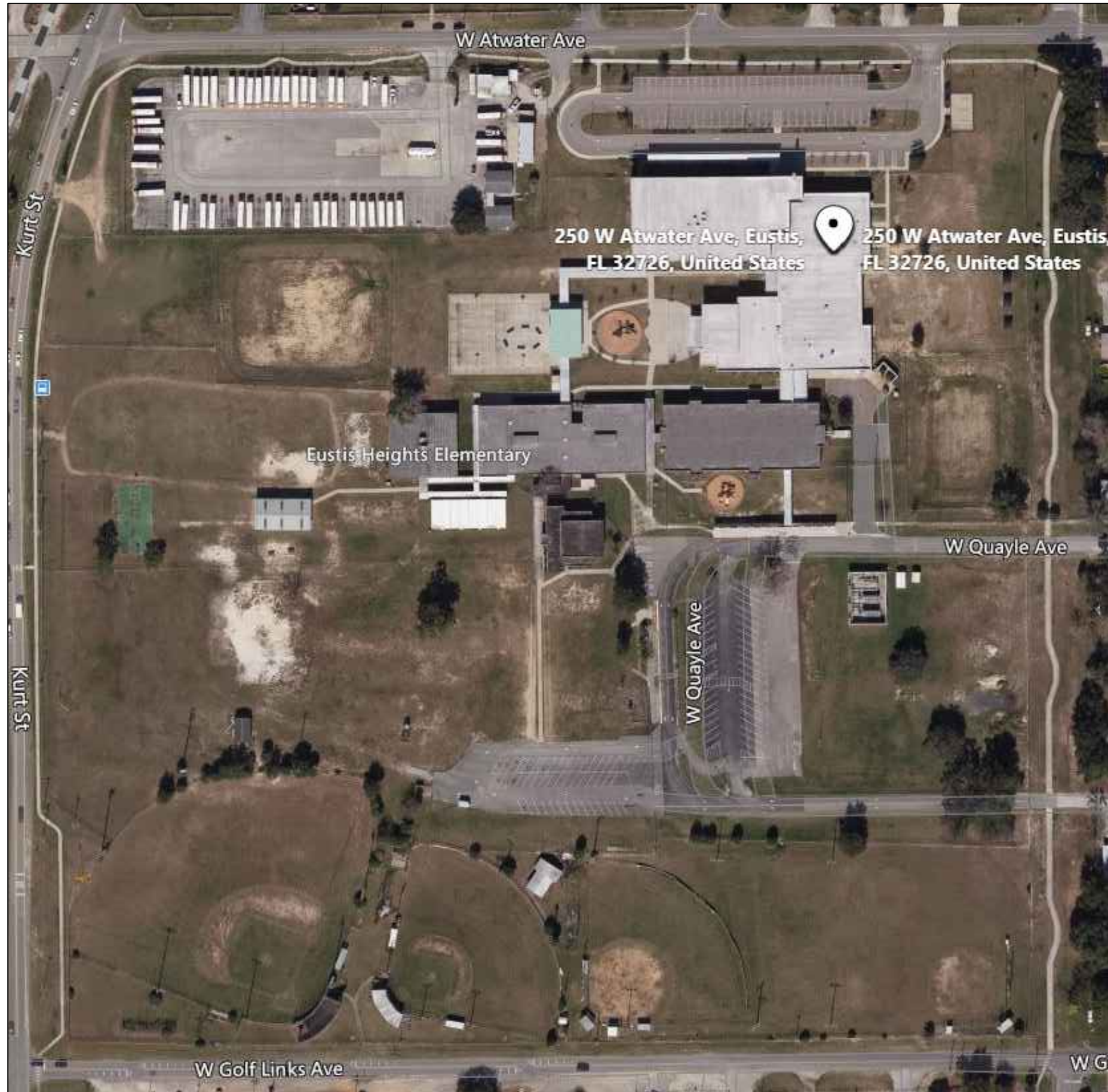


EUSTIS HEIGHTS ELEMENTARY SCHOOL



INDEX OF DRAWINGS	
SHT. NO.	DESCRIPTION
SP-01	AERIAL
SP-02	SITE PLAN
B-01.1	BUILDING 01 FIRST FLOOR
B-01.1A	BUILDING 01.1A FIRST FLOOR
B-01.1B	BUILDING 01.1B FIRST FLOOR
B-01.2	BUILDING 01 SECOND FLOOR
B-02	BUILDING 03
B-03	BUILDING 08
B-04	BUILDING 12
B-05	BUILDING 13

REV	DATE	DESCRIPTION
A	02/19/21	PRELIMINARY FISH PLAN
B		
0		
1		
2		
3		
4		
5		
6		

ARCHIS PROJECT NO.:
 DRAWN BY: YP
 CHECKED BY: CB



PREPARED BY:

 350 E. Crown Point Road, Suite 1100
 Winter Garden, FL 34787
 Main: 888.324.2557
 Direct: 407.439.1594

DATE
 , PE
 FL PROFESSIONAL ENGINEER LIC. #

Eustis Heights Elementary School (FISH PLAN)
 250 W Atwater Ave,
 Eustis, FL 32726

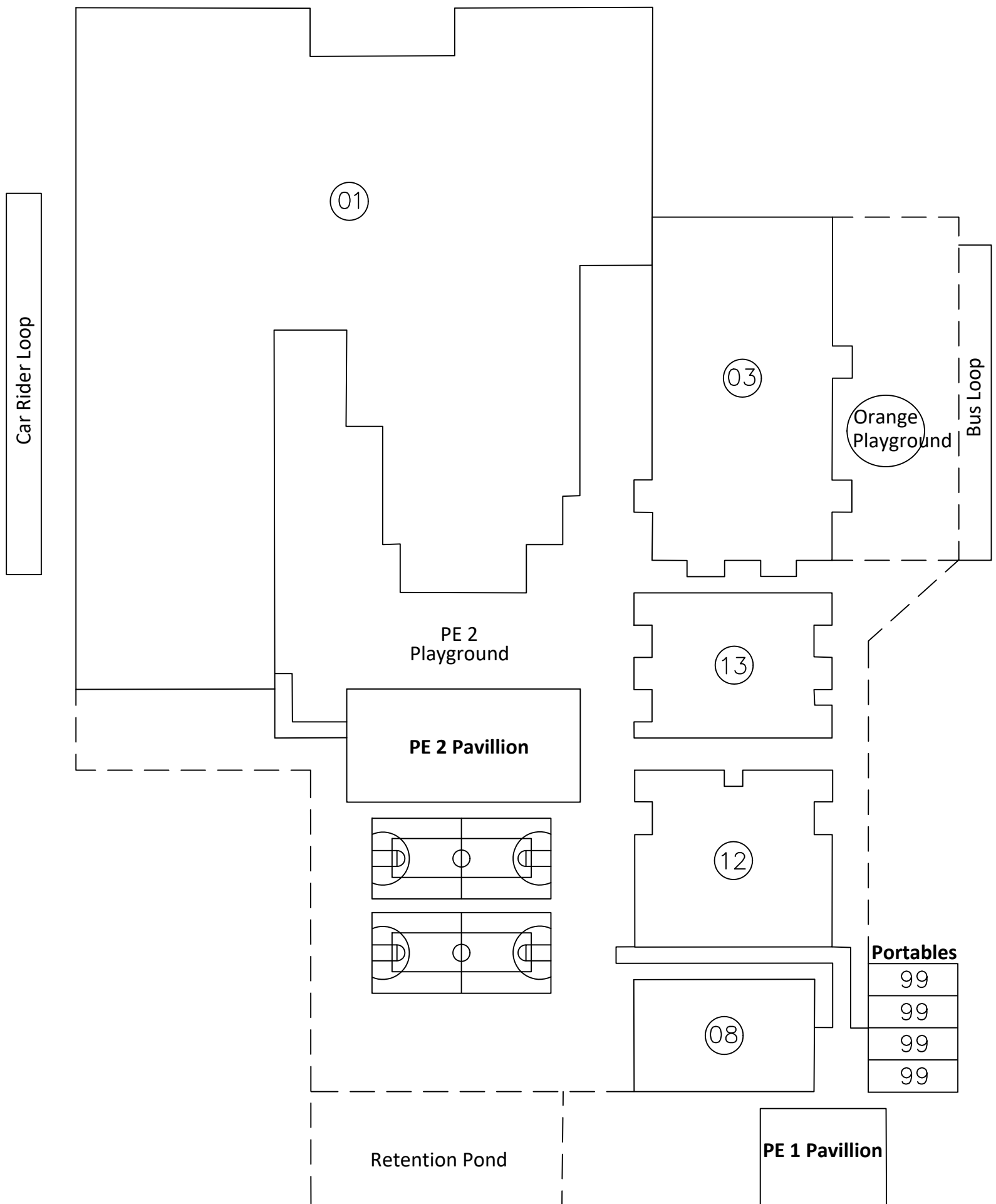
SHEET DESCRIPTION
AERIAL VIEW

SHEET NUMBER
SP-01

1
 SP-01
AERIAL VIEW
 SCALE: N.T.S.

ARCHIS TECHNOLOGIES - \\server-1\H\Archis\21-028 Eustis Heights ES\From ISP\2021-03-11\896_Lake County Fish Survey_Eustis Heights ES.dwg March 11, 2021 10:03:08 PC20

ARCHIS TECHNOLOGIES - \\server-1\H\Archis\21-028 Eustis Heights ES\From ISP\2021-03-11\896_Lake County Fish Survey_Eustis Heights ES.dwg March 11, 2021 10:03:16 PC20



1
SP-02 **OVERALL SITE PLAN**
SCALE: N.T.S

REV	DATE	DESCRIPTION
A	02/19/21	PRELIMINARY FISH PLAN
B		
0		
1		
2		
3		
4		
5		
6		

ARCHIS PROJECT NO.:
DRAWN BY: YP
CHECKED BY: CB



158 Terra Mango Loop, Suite B,
Orlando, FL 32835
Main: (407) 293-4168

PREPARED BY:
ARCHIS
350 E. Crown Point Road, Suite 1100
Winter Garden, FL 34787
Main: 888.324.2557
Direct: 407.439.1594

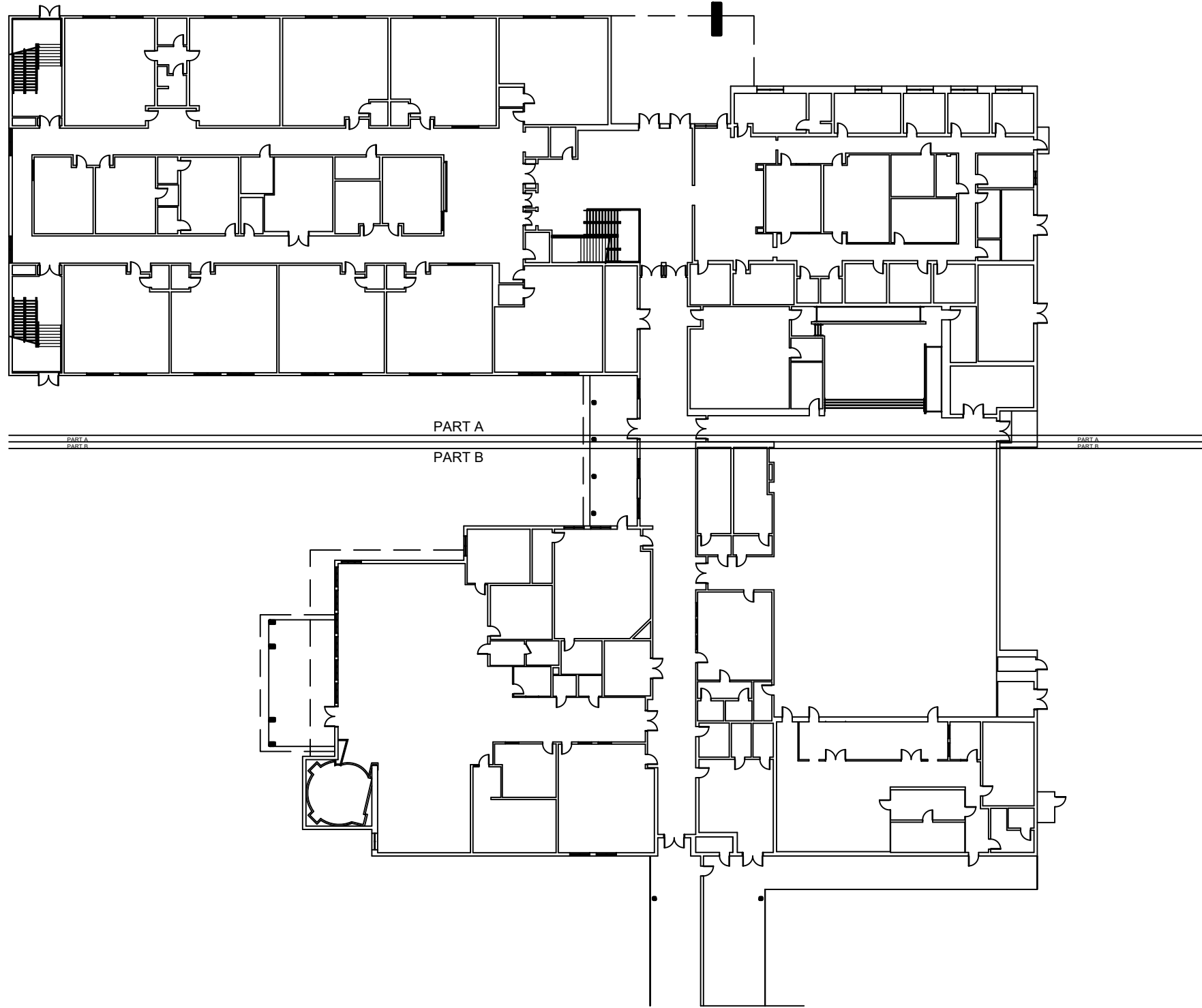
DATE
, PE
FL PROFESSIONAL ENGINEER LIC. #

**Eustis Heights
Elementary School
(FISH PLAN)**
250 W Atwater Ave,
Eustis, FL 32726

SHEET DESCRIPTION
**OVERALL SITE
PLAN**

SHEET NUMBER
SP-02

ARCHIS TECHNOLOGIES - \\server-1\H\Archis\21-028 Eustis Heights ES\From ISP\2021-03-11\896_Lake County Fish Survey_Eustis Heights ES.dwg March 11, 2021 10:03:16 PC20



REV	DATE	DESCRIPTION
A	02/19/21	PRELIMINARY FISH PLAN
B		
0		
1		
2		
3		
4		
5		
6		

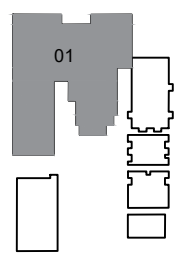
ARCHIS PROJECT NO.:
 DRAWN BY: YP
 CHECKED BY: CB



CMI
 158 Terra Mango Loop, Suite B,
 Orlando, FL 32835
 Main: (407) 293-4168

PREPARED BY:
ARCHIS
 350 E. Crown Point Road, Suite 1100
 Winter Garden, FL 34787
 Main: 888.324.2557
 Direct: 407.439.1594

DATE
 , PE
 FL PROFESSIONAL ENGINEER LIC. #



KEY PLAN

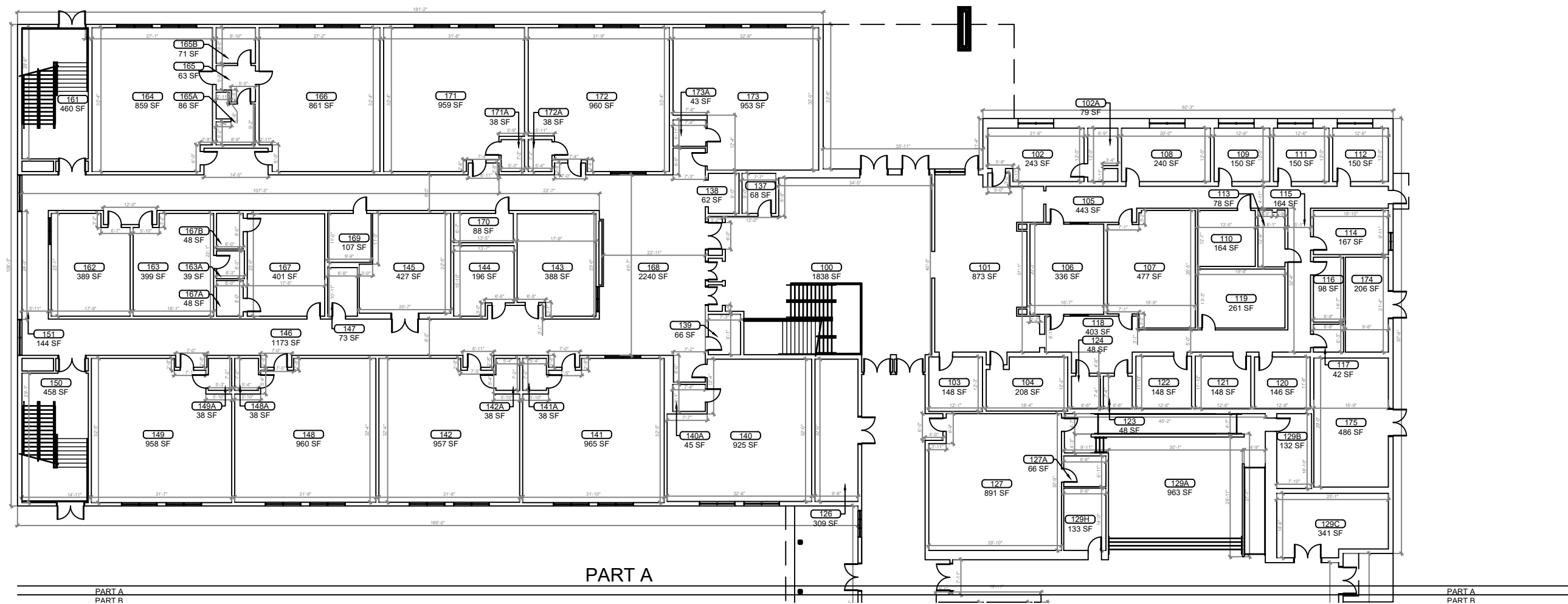
BUILDING 01 FIRST FLOOR PLAN
 SCALE: 1/16"=1'-0"

Eustis Heights Elementary School (FISH PLAN)
 250 W Atwater Ave,
 Eustis, FL 32726

SHEET DESCRIPTION
BUILDING 01

SHEET NUMBER
B-01.1

ARCHIS TECHNOLOGIES - \\server-1\H\Archis\21-028 Eustis Heights ES\From ISP\2021-03-11\896_Lake County Fish Survey_Eustis Heights ES.dwg March 11, 2021 10:03:21 PC20

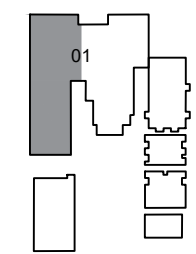


PART A

PART A
PART B

PART A
PART B

1 **BUILDING 01.1A FIRST FLOOR PLAN**
SCALE: 3/32"=1'-0"



KEY PLAN

REV	DATE	DESCRIPTION
A	02/19/21	PRELIMINARY FISH PLAN
B		
0		
1		
2		
3		
4		
5		
6		

ARCHIS PROJECT NO.:	
DRAWN BY:	CHECKED BY:
YP	CB



CMI
158 Terra Mango Loop, Suite B,
Orlando, FL 32835
Main: (407) 293-4168

PREPARED BY:
ARCHIS
350 E. Crown Point Road, Suite 1100
Winter Garden, FL 34787
Main: 888.324.2557
Direct: 407.439.1594

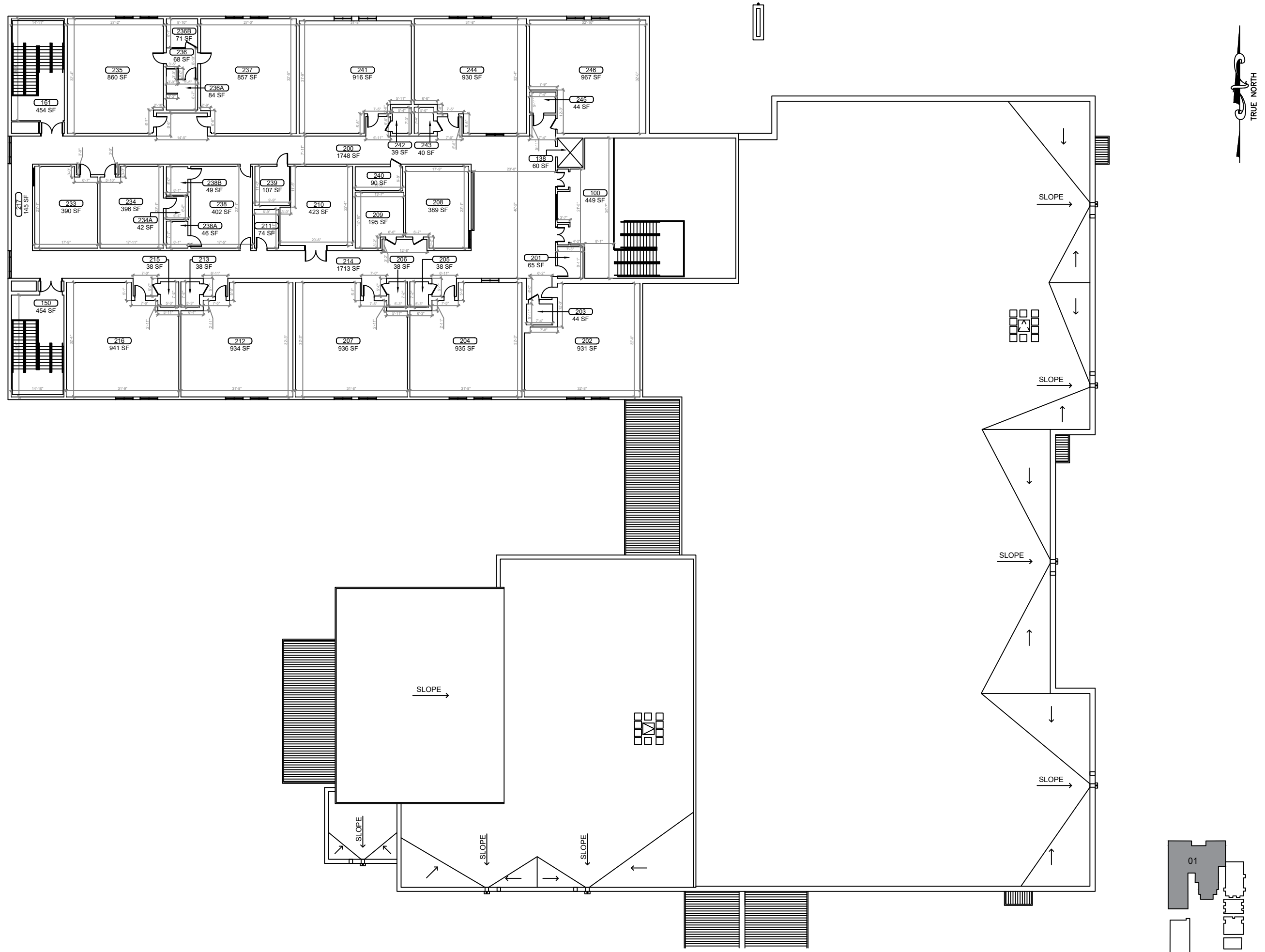
DATE
, PE
FL PROFESSIONAL ENGINEER LIC. #

**Eustis Heights
Elementary School
(FISH PLAN)**
250 W Atwater Ave,
Eustis, FL 32726

SHEET DESCRIPTION
BUILDING 01

SHEET NUMBER
B-01.1A

ARCHIS TECHNOLOGIES - \\server-1\H\Archis\21-028 Eustis Heights ES\From ISP\2021-03-11\896_Lake County Fish Survey_Heights ES.dwg March 11, 2021 10:03:31 PC20



REV	DATE	DESCRIPTION
A	02/19/21	PRELIMINARY FISH PLAN
B		
0		
1		
2		
3		
4		
5		
6		

ARCHIS PROJECT NO.:
 DRAWN BY: YP
 CHECKED BY: CB



CMI
 158 Terra Mango Loop, Suite B,
 Orlando, FL 32835
 Main: (407) 293-4168

PREPARED BY:
ARCHIS
 350 E. Crown Point Road, Suite 1100
 Winter Garden, FL 34787
 Main: 888.324.2557
 Direct: 407.439.1594

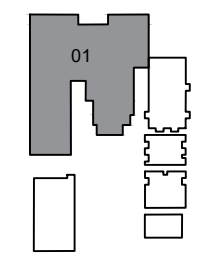
DATE
 , PE
 FL PROFESSIONAL ENGINEER LIC. #

**Eustis Heights
 Elementary School
 (FISH PLAN)**
 250 W Atwater Ave,
 Eustis, FL 32726

SHEET DESCRIPTION
BUILDING 01

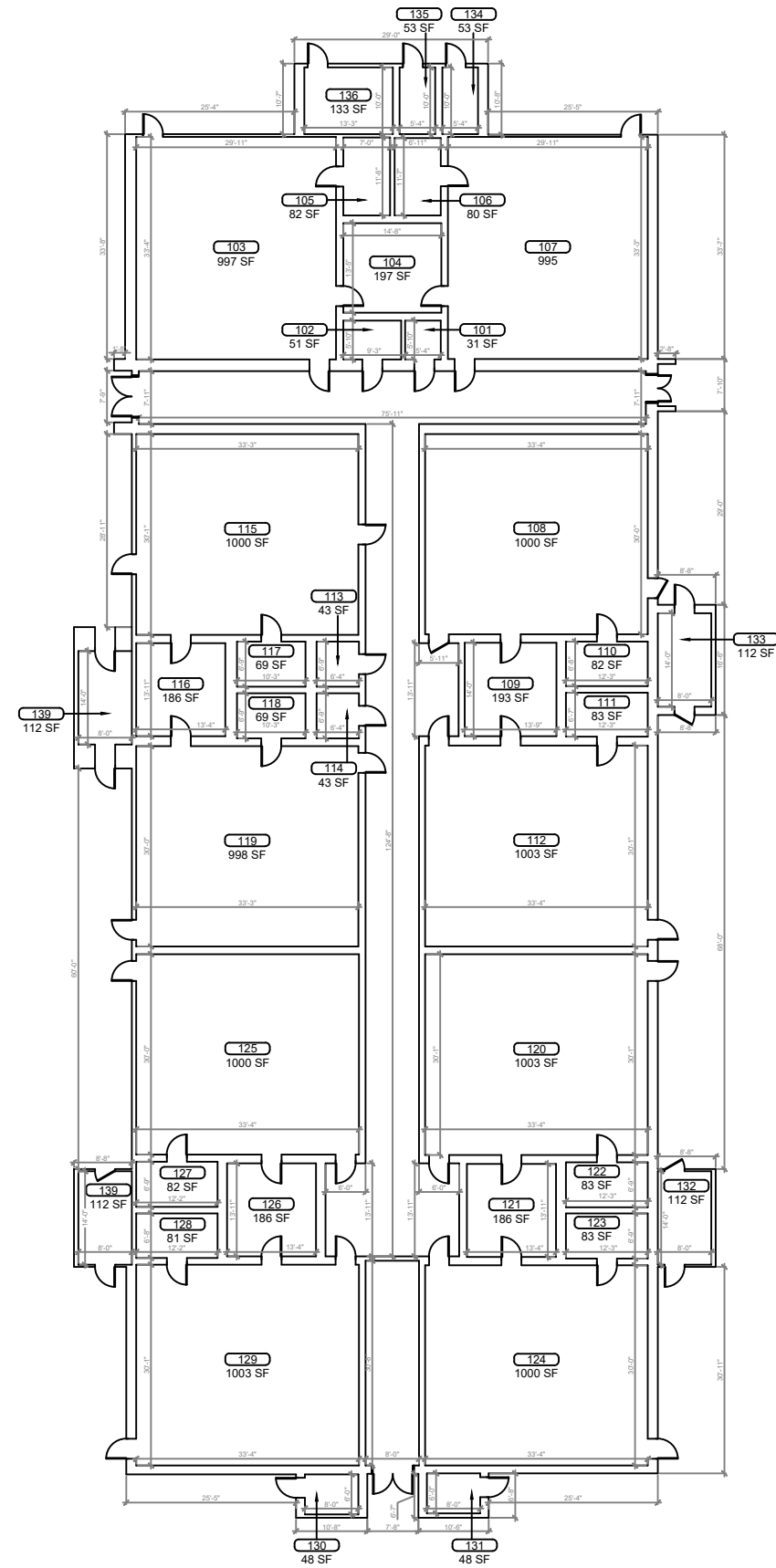
SHEET NUMBER
B-01.2

1 BUILDING 01 SECOND FLOOR PLAN
 B-01.2 SCALE: 3/32"=1'-0"

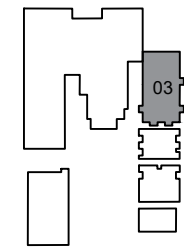


KEY PLAN

ARCHIS TECHNOLOGIES - \\server-1\H\Archis\21-028 Eustis Heights ES\From ISP\2021-03-11\896_Lake County Fish Survey_Eustis Heights ES.dwg March 11, 2021 10:03:36 PC20



1
B-02 **BUILDING 03 FLOOR PLAN**
SCALE: 3/32"=1'-0"



KEY PLAN

REV	DATE	DESCRIPTION
A	02/19/21	PRELIMINARY FISH PLAN
B		
0		
1		
2		
3		
4		
5		
6		

ARCHIS PROJECT NO.:
DRAWN BY: YP
CHECKED BY: CB



158 Terra Mango Loop, Suite B,
Orlando, FL 32835
Main: (407) 293-4168

PREPARED BY:
ARCHIS
350 E. Crown Point Road, Suite 1100
Winter Garden, FL 34787
Main: 888.324.2557
Direct: 407.439.1594

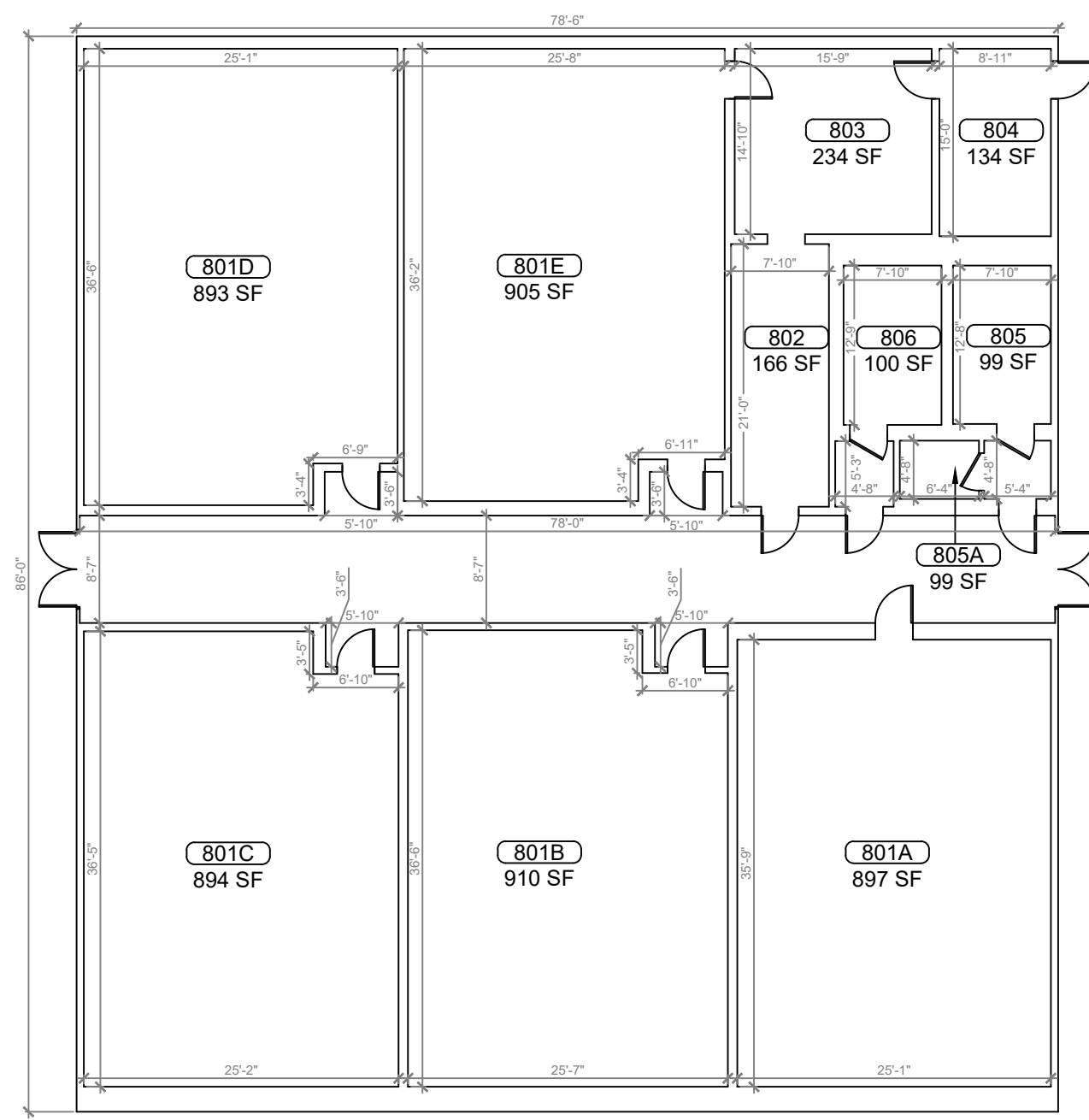
DATE
, PE
FL PROFESSIONAL ENGINEER LIC. #

**Eustis Heights
Elementary School
(FISH PLAN)**
250 W Atwater Ave,
Eustis, FL 32726

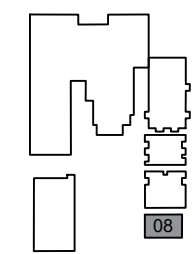
SHEET DESCRIPTION
BUILDING 03

SHEET NUMBER
B-02

ARCHIS TECHNOLOGIES - \\server-1\H\Archis\21-028 Eustis Heights ES\From ISP\2021-03-11\896_Lake County Fish Survey_Eustis Heights ES.dwg March 11, 2021 10:03:41 PC20



1
B-03 **BUILDING 08 FLOOR PLAN**
SCALE: 3/16"=1'-0"



KEY PLAN

REV	DATE	DESCRIPTION
A	02/19/21	PRELIMINARY FISH PLAN
B		
0		
1		
2		
3		
4		
5		
6		

ARCHIS PROJECT NO.:	
DRAWN BY:	CHECKED BY:
YP	CB



PREPARED BY:

350 E. Crown Point Road, Suite 1100
Winter Garden, FL 34787
Main: 888.324.2557
Direct: 407.439.1594

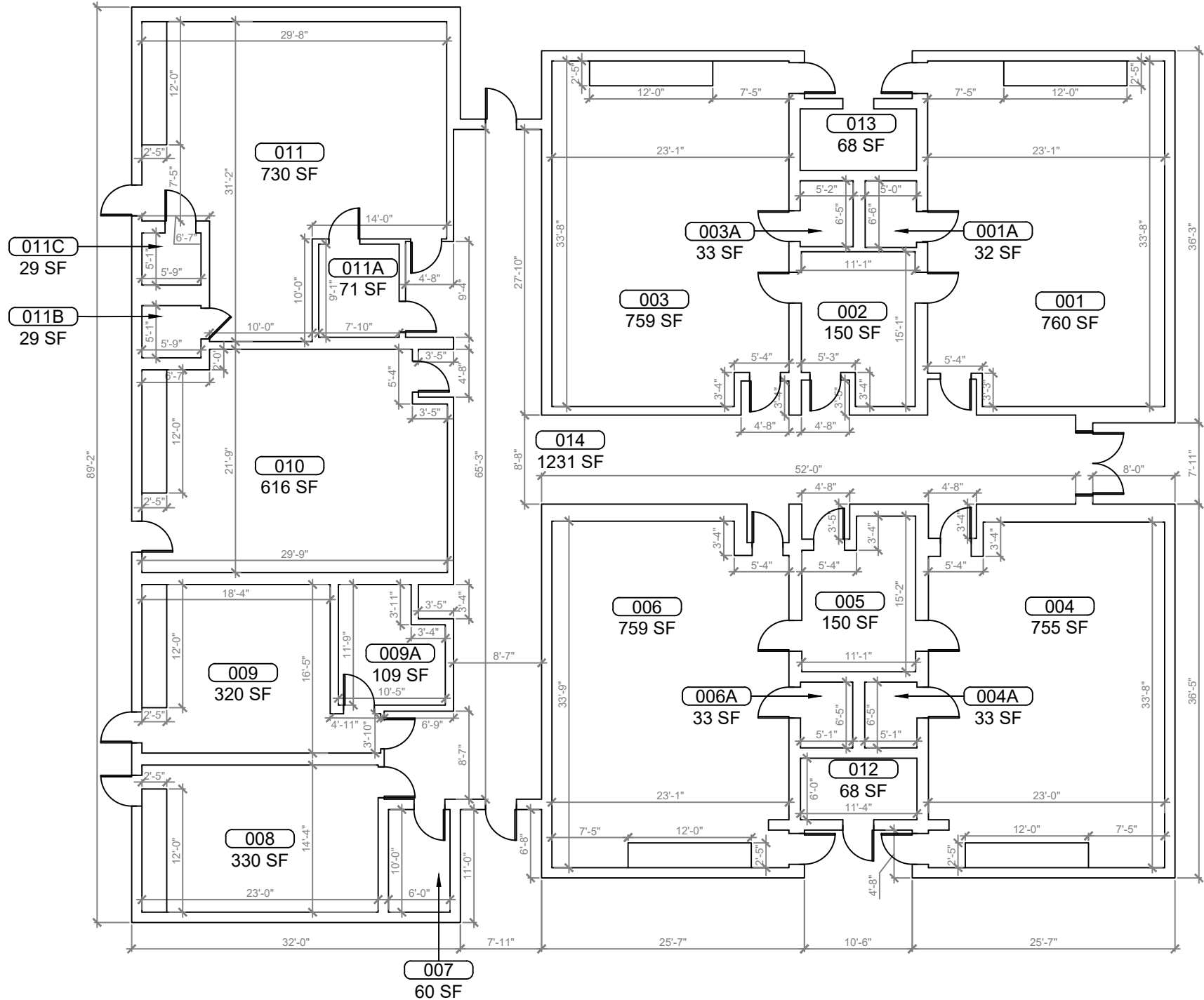
DATE
, PE
FL PROFESSIONAL ENGINEER LIC. #

**Eustis Heights
Elementary School
(FISH PLAN)**
250 W Atwater Ave,
Eustis, FL 32726

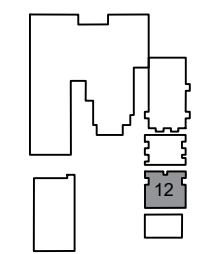
SHEET DESCRIPTION
BUILDING 08

SHEET NUMBER
B-03

ARCHIS TECHNOLOGIES - \\server-1\H\Archis\21-028 Eustis Heights ES\From ISP\2021-03-11\896_Lake County Fish Survey_Heights ES.dwg March 11, 2021 10:03:46 PC20



1 BUILDING 12 FLOOR PLAN
 B-04 SCALE: 3/16"=1'-0"



KEY PLAN



REV	DATE	DESCRIPTION
A	02/19/21	PRELIMINARY FISH PLAN
B		
0		
1		
2		
3		
4		
5		
6		

ARCHIS PROJECT NO.:
 DRAWN BY: YP
 CHECKED BY: CB



CMI
 158 Terra Mango Loop, Suite B,
 Orlando, FL 32835
 Main: (407) 293-4168

PREPARED BY:
ARCHIS
 350 E. Crown Point Road, Suite 1100
 Winter Garden, FL 34787
 Main: 888.324.2557
 Direct: 407.439.1594

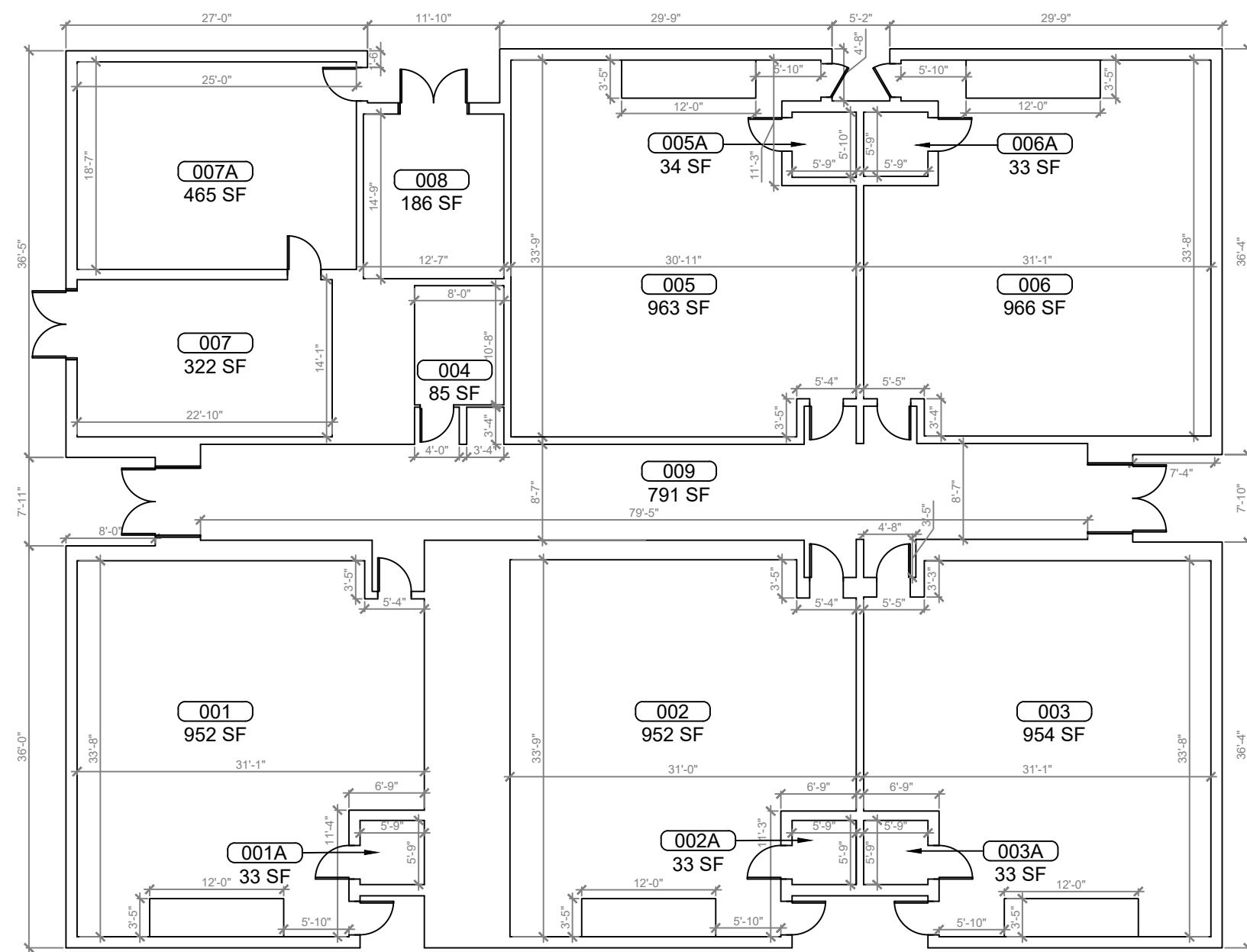
DATE
 , PE
 FL PROFESSIONAL ENGINEER LIC. #

Eustis Heights Elementary School (FISH PLAN)
 250 W Atwater Ave,
 Eustis, FL 32726

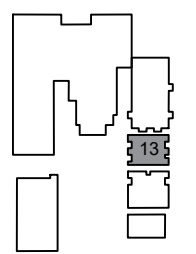
SHEET DESCRIPTION
BUILDING 12

SHEET NUMBER
B-04

ARCHIS TECHNOLOGIES - \\server-1\H\Archis\21-028 Eustis Heights ES\From ISP\2021-03-11\896_Lake County Fish Survey_Heights ES.dwg March 11, 2021 10:03:51 PC20



1 BUILDING 13 FLOOR PLAN
B-05 SCALE: 3/16"=1'-0"



KEY PLAN

REV	DATE	DESCRIPTION
A	02/19/21	PRELIMINARY FISH PLAN
B		
0		
1		
2		
3		
4		
5		
6		

ARCHIS PROJECT NO.:
 DRAWN BY: YP
 CHECKED BY: CB



C M I
 158 Terra Mango Loop, Suite B,
 Orlando, FL 32835
 Main: (407) 293-4168

PREPARED BY:
ARCHIS
 350 E. Crown Point Road, Suite 1100
 Winter Garden, FL 34787
 Main: 888.324.2557
 Direct: 407.439.1594

DATE
 , **PE**
 FL PROFESSIONAL ENGINEER LIC. #

**Eustis Heights
 Elementary School
 (FISH PLAN)**
 250 W Atwater Ave,
 Eustis, FL 32726

SHEET DESCRIPTION
BUILDING 13

SHEET NUMBER
B-05