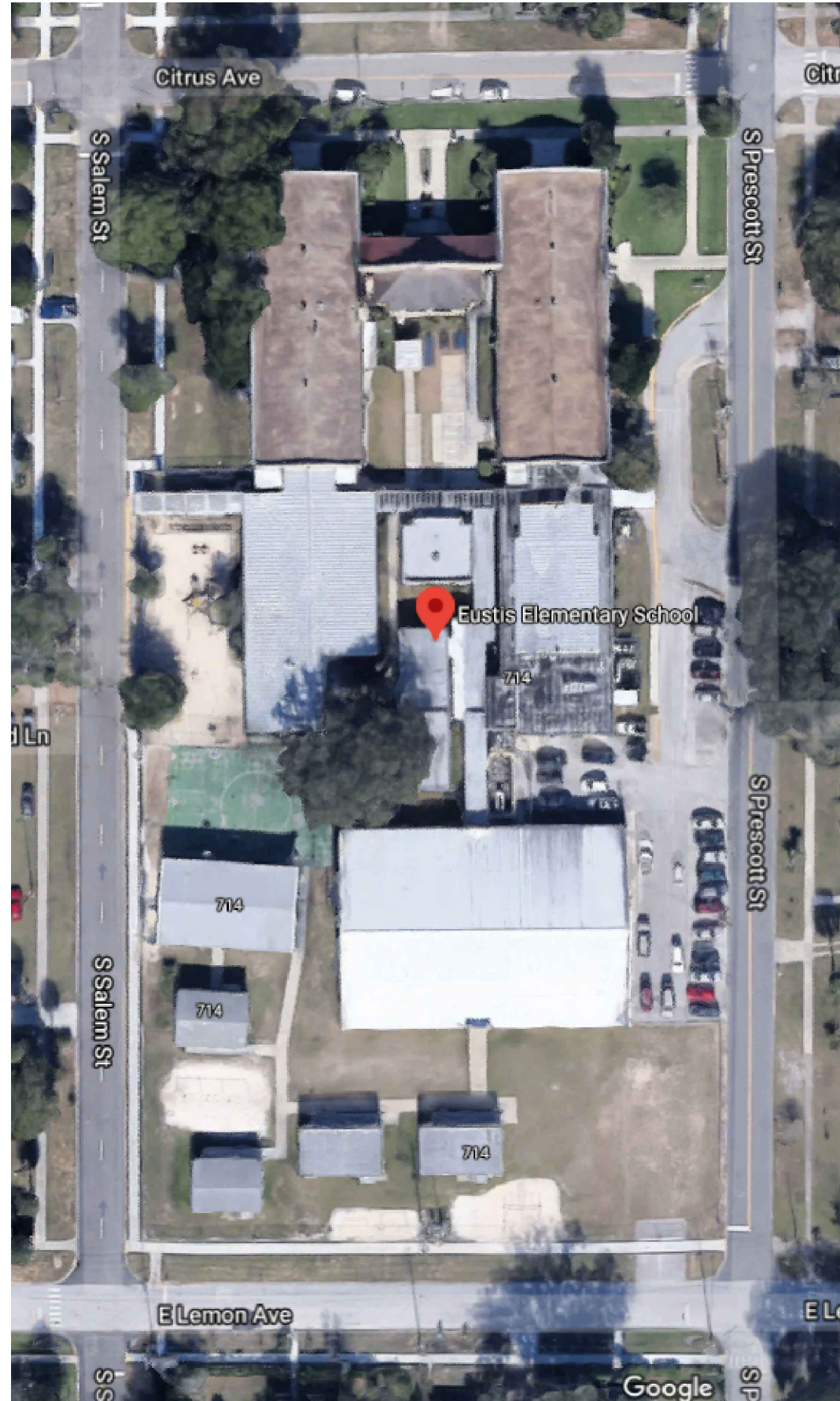


# Eustis Elementary School



INDEX OF DRAWINGS	
SHT. NO.	DESCRIPTION
SP-01	AERIAL
SP-02	SITE PLAN
B-01.1	BUILDING 01.1
B-01.2	BUILDING 01.2
B-02	BUILDING 02
B-03	BUILDING 03
B-04	BUILDING 05
B-05	BUILDING 07 & MEZZANINE

REV	DATE	DESCRIPTION
A	02/12/2021	PRELIMINARY FISH PLAN
B		
0		
1		
2		
3		
4		
5		
6		

ARCHIS PROJECT NO.:

DRAWN BY:	CHECKED BY:
SH	CB



PREPARED BY:

350 E. Crown Point Road, Suite 1100  
Winter Garden, FL 34787  
Main: 888.324.2557  
Direct: 407.439.1594

**DATE**  
\_\_\_\_\_, **PE**  
FL PROFESSIONAL ENGINEER LIC. # \_\_\_\_\_

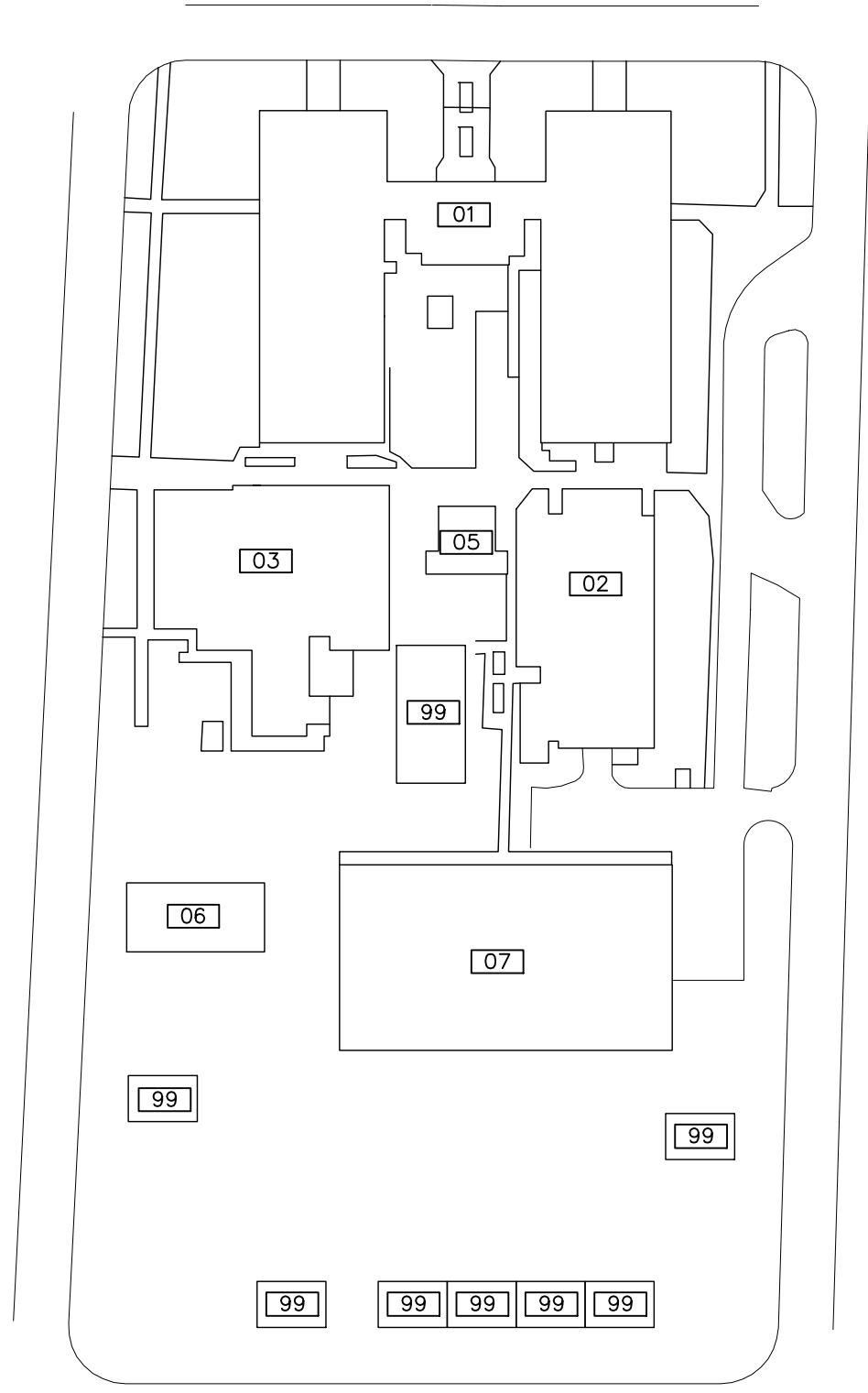
**Eustis Elementary School  
(FISH PLAN)**  
714 Citrus Ave, Eustis,  
FL 32726

SHEET DESCRIPTION  
**AERIAL VIEW**

SHEET NUMBER  
**SP-01**

server-1\H\Archis\21-027 Eustis ES\From ISP\2021-02-18\896\_Lake County Fish Survey\_Eustis ES.dwg February 18, 2021 21:25:37 PC20

ARCHIS TECHNOLOGIES - \\server-1\H\Archis\21-027 Eustis ES\From ISP\2021-02-18\896\_Lake County Fish Survey\_Eustis ES.dwg February 18, 2021 21:25:43 PC20

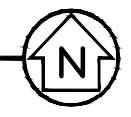


## LEGEND

- 01-ADMIN/MEDIA CENTER/CLASSROOMS
- 02-CAFETERIA
- 03-CLASSROOM
- 05-CLASSROOM
- 06-COVERED PLAY AREA
- 07-CLASSROOM
- 99-PORTABLES

## SITE PLAN

NTS



**1** **OVERALL SITE PLAN**  
 SP-02 SCALE: 1:32

REV	DATE	DESCRIPTION
A	02/12/2021	PRELIMINARY FISH PLAN
B		
0		
1		
2		
3		
4		
5		
6		

ARCHIS PROJECT NO.:  
 DRAWN BY: SH CHECKED BY: CB



**C M I**  
 158 Terra Mango Loop, Suite B,  
 Orlando, FL 32835  
 Main: (407) 293-4168

PREPARED BY:  
  
 350 E. Crown Point Road, Suite 1100  
 Winter Garden, FL 34787  
 Main: 888.324.2557  
 Direct: 407.439.1594

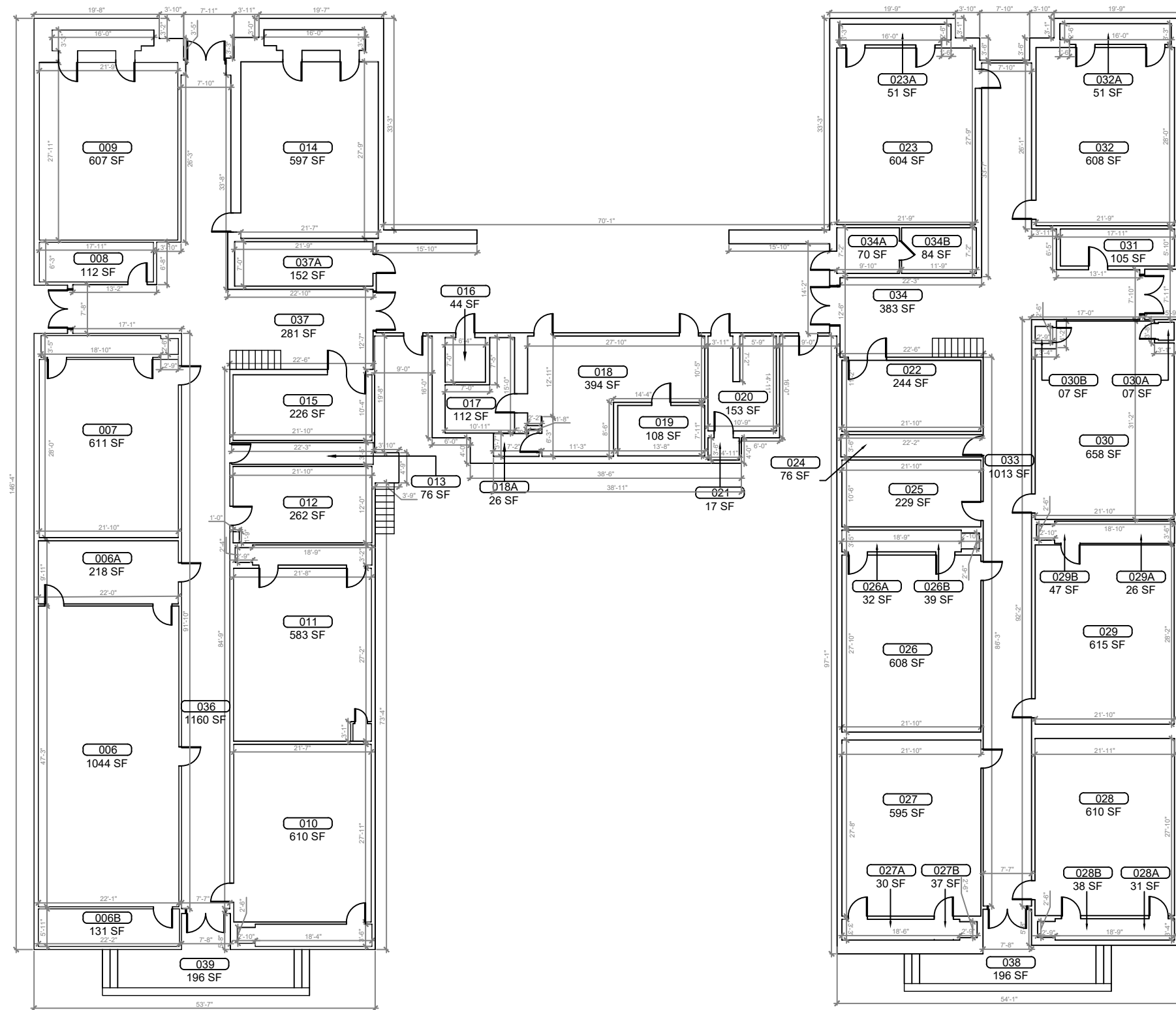
DATE  
 , PE  
 FL PROFESSIONAL ENGINEER LIC. #

**Eustis Elementary School**  
**(FISH PLAN)**  
 714 Citrus Ave, Eustis,  
 FL 32726

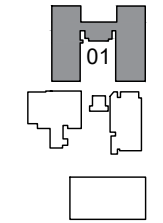
SHEET DESCRIPTION  
**OVERALL SITE PLAN**

SHEET NUMBER  
**SP-02**

ARCHIS TECHNOLOGIES - \\server-1\H\Archis\21-027 Eustis ES\From ISP\2021-02-18\896\_Lake County Fish Survey\_Eustis ES.dwg February 18, 2021 21:25:45 PC20



**1 BUILDING 01 FLOOR PLAN**  
 B-01.1 SCALE: 1/8"=1'-0"



**KEY PLAN**

REV	DATE	DESCRIPTION
A	02/12/2021	PRELIMINARY FISH PLAN
B		
0		
1		
2		
3		
4		
5		
6		

ARCHIS PROJECT NO.:  
 DRAWN BY: SH  
 CHECKED BY: CB



**CMI**  
 158 Terra Mango Loop, Suite B,  
 Orlando, FL 32835  
 Main: (407) 293-4168

PREPARED BY:  
**ARCHIS**  
 350 E. Crown Point Road, Suite 1100  
 Winter Garden, FL 34787  
 Main: 888.324.2577  
 Direct: 407.439.1594

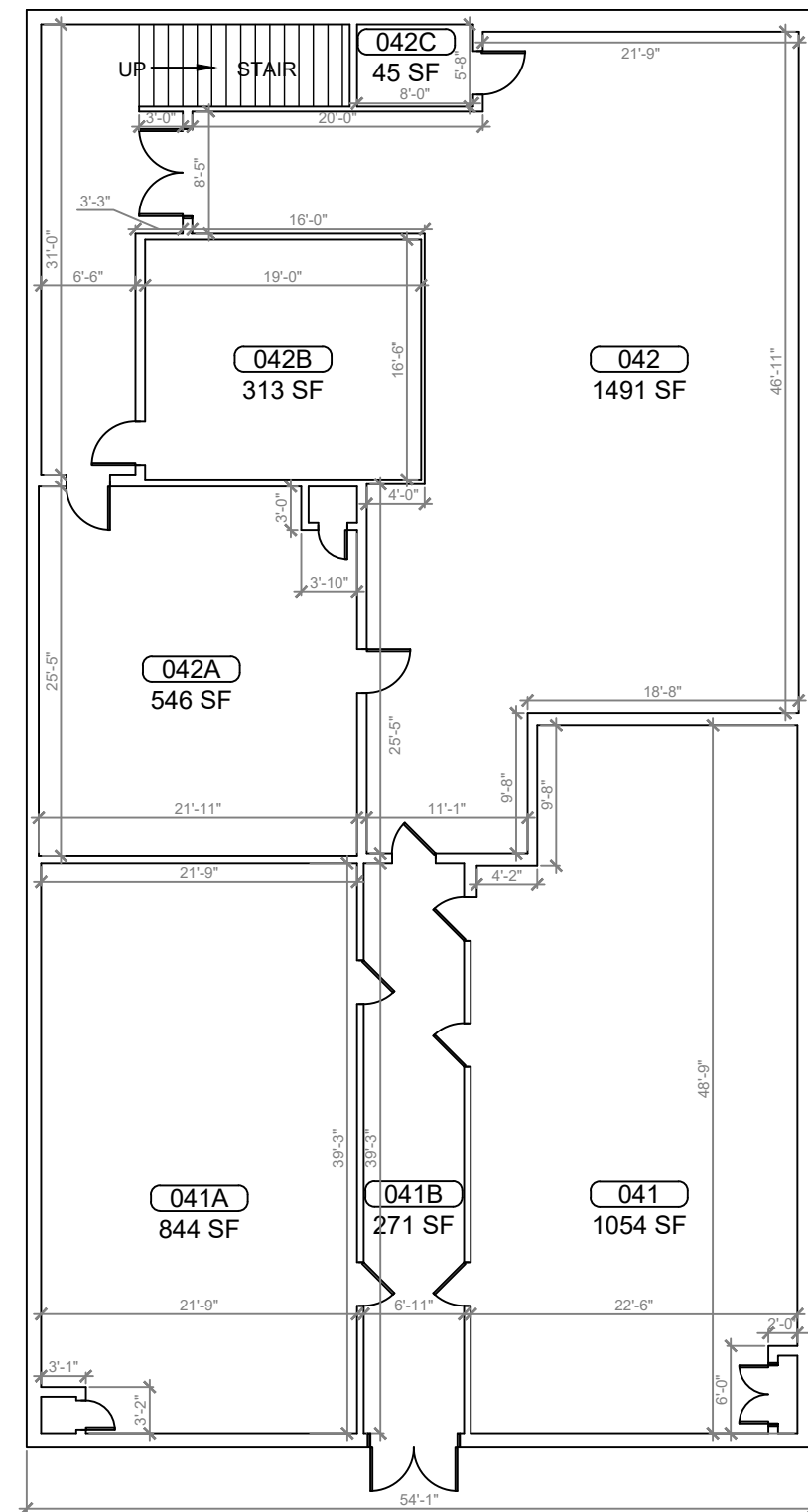
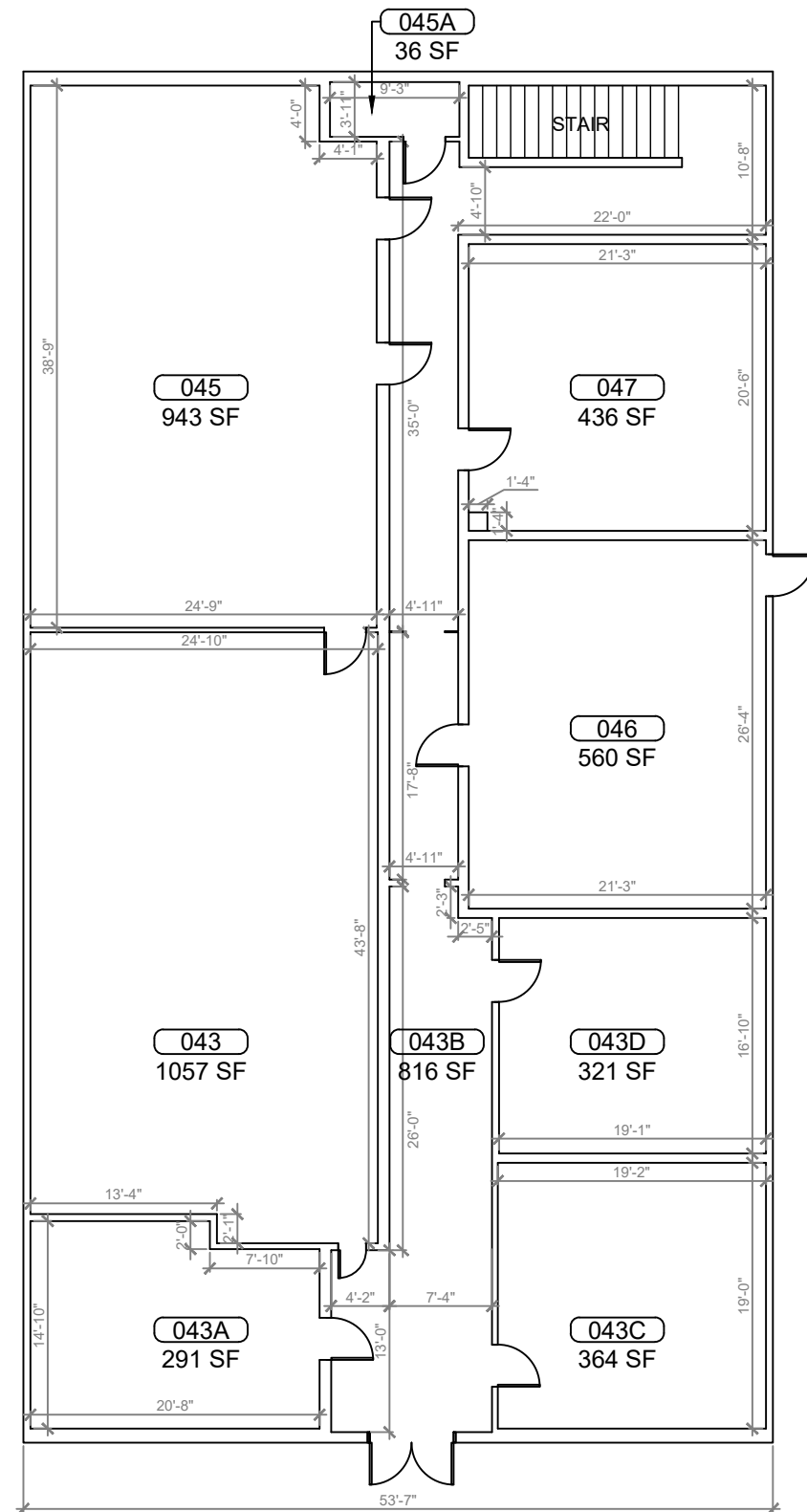
DATE  
 , PE  
 FL PROFESSIONAL ENGINEER LIC. #

**Eustis Elementary School (FISH PLAN)**  
 714 Citrus Ave, Eustis, FL 32726

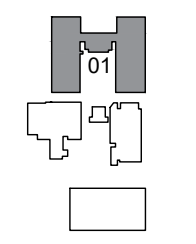
SHEET DESCRIPTION  
**BUILDING 01**

SHEET NUMBER  
**B-01.1**

ARCHIS TECHNOLOGIES - \\server-1\H\Archis\21-027 Eustis ES\From ISP\2021-02-18\896\_Lake County Fish Survey\_Eustis ES.dwg February 18, 2021 21:25:50 PC20



**1** BUILDING 01 BASEMENT PLAN  
 B-01.2 SCALE: 3/16" = 1'-0"



**KEY PLAN**

REV	DATE	DESCRIPTION
A	02/12/2021	PRELIMINARY FISH PLAN
B		
0		
1		
2		
3		
4		
5		
6		

ARCHIS PROJECT NO.:  
 DRAWN BY: SH CHECKED BY: CB



**CMI**  
 158 Terra Mango Loop, Suite B,  
 Orlando, FL 32835  
 Main: (407) 293-4168

PREPARED BY:  
**ARCHIS**  
 350 E. Crown Point Road, Suite 1100  
 Winter Garden, FL 34787  
 Main: 888.324.2557  
 Direct: 407.439.1594

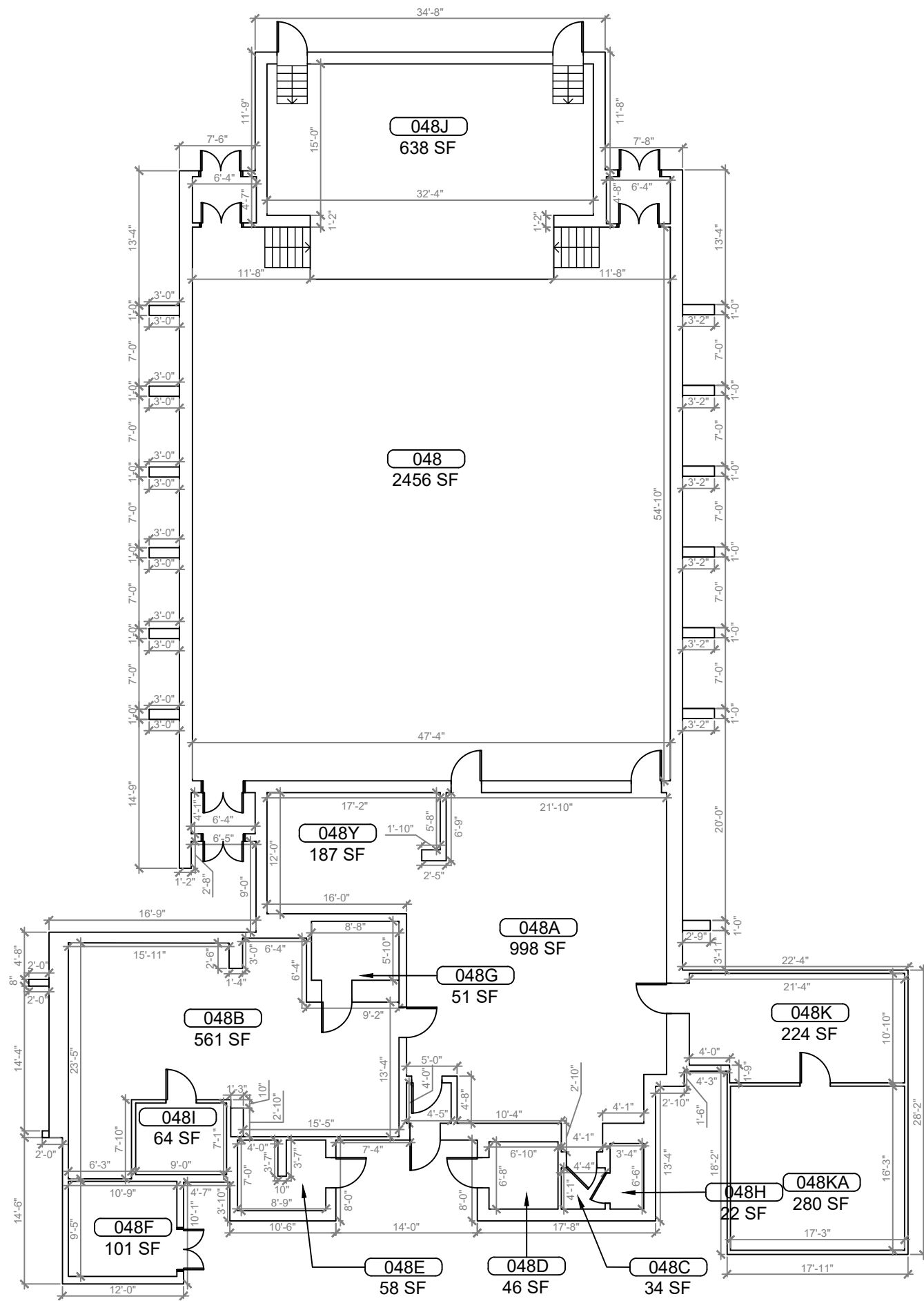
DATE  
 , PE  
 FL PROFESSIONAL ENGINEER LIC. #

**Eustis Elementary School (FISH PLAN)**  
 714 Citrus Ave, Eustis, FL 32726

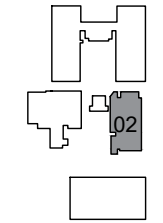
SHEET DESCRIPTION  
**BUILDING 01**

SHEET NUMBER  
**B-01.2**

server-1\H\Archis\21-027 Eustis ES\From ISP\2021-02-18\896\_Lake County Fish Survey\_Eustis ES.dwg February 18, 2021 21:25:55 PC20



**1**  
**BUILDING 02 FLOOR PLAN**  
 SCALE: 3/16"=1'-0"



**KEY PLAN**



REV	DATE	DESCRIPTION
A	02/12/2021	PRELIMINARY FISH PLAN
B		
0		
1		
2		
3		
4		
5		
6		

ARCHIS PROJECT NO.:  
 DRAWN BY: SH  
 CHECKED BY: CB



**CMI**  
 158 Terra Mango Loop, Suite B,  
 Orlando, FL 32835  
 Main: (407) 293-4168

PREPARED BY:  
**ARCHIS**  
 350 E. Crown Point Road, Suite 1100  
 Winter Garden, FL 34787  
 Main: 888.324.2557  
 Direct: 407.439.1594

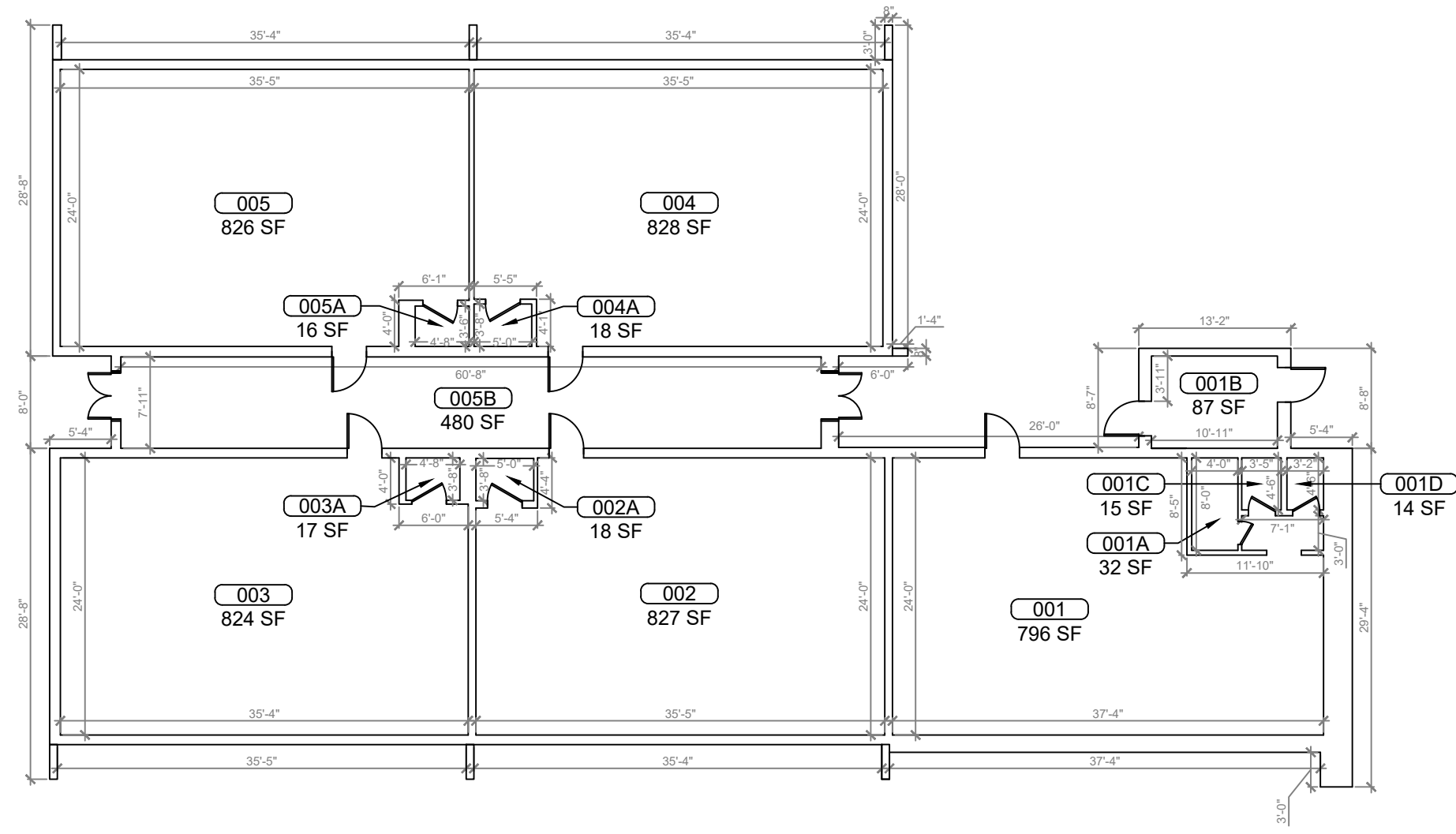
DATE  
 , PE  
 FL PROFESSIONAL ENGINEER LIC. #

**Eustis Elementary School (FISH PLAN)**  
 714 Citrus Ave, Eustis, FL 32726

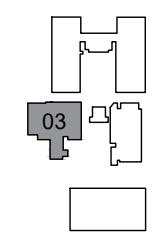
SHEET DESCRIPTION  
**BUILDING 02**

SHEET NUMBER  
**B-02**

ARCHIS TECHNOLOGIES - \\server-1\H\Archis\21-027 Eustis ES\From ISP\2021-02-18\896\_Lake County Fish Survey\_Eustis ES.dwg February 18, 2021 21:26:00 PC20



**1 BUILDING 03 FLOOR PLAN**  
 B-03 SCALE: 3/16"=1'-0"



**KEY PLAN**

REV	DATE	DESCRIPTION
A	02/12/2021	PRELIMINARY FISH PLAN
B		
0		
1		
2		
3		
4		
5		
6		

ARCHIS PROJECT NO.:  
 DRAWN BY: SH  
 CHECKED BY: CB



**C M I**  
 158 Terra Mango Loop, Suite B,  
 Orlando, FL 32835  
 Main: (407) 293-4168

PREPARED BY:  
**ARCHIS**  
 350 E. Crown Point Road, Suite 1100  
 Winter Garden, FL 34787  
 Main: 888.324.2577  
 Direct: 407.439.1594

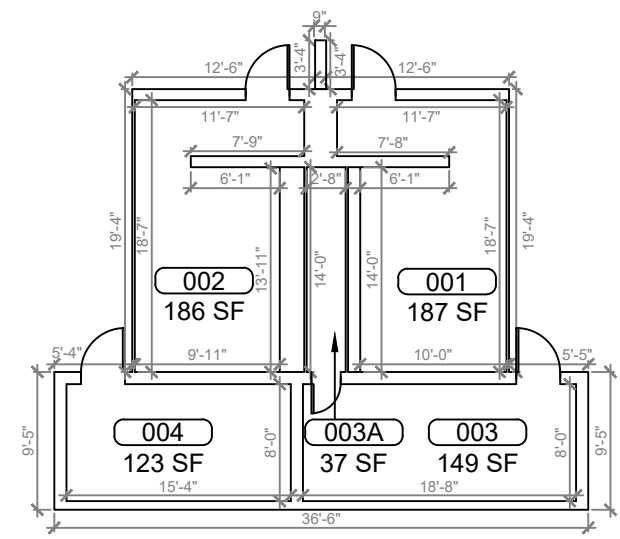
**DATE**  
 , PE  
 FL PROFESSIONAL ENGINEER LIC. #

**Eustis Elementary School (FISH PLAN)**  
 714 Citrus Ave, Eustis, FL 32726

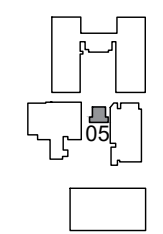
SHEET DESCRIPTION  
**BUILDING 03**

SHEET NUMBER  
**B-03**

ARCHIS TECHNOLOGIES - \\server-1\H\Archis\21-027 Eustis ES\From ISP\2021-02-18\896\_Lake County Fish Survey\_Eustis ES.dwg February 18, 2021 21:26:05 PC20



**1**  
B-04 **BUILDING 05 FLOOR PLAN**  
SCALE: 3/16"=1'-0"



**KEY PLAN**

REV	DATE	DESCRIPTION
A	02/12/2021	PRELIMINARY FISH PLAN
B		
0		
1		
2		
3		
4		
5		
6		

ARCHIS PROJECT NO.:	
DRAWN BY:	CHECKED BY:
SH	CB



**C M I**  
158 Terra Mango Loop, Suite B,  
Orlando, FL 32835  
Main: (407) 293-4168

PREPARED BY:  
**ARCHIS**  
350 E. Crown Point Road, Suite 1100  
Winter Garden, FL 34787  
Main: 888.324.2557  
Direct: 407.439.1594

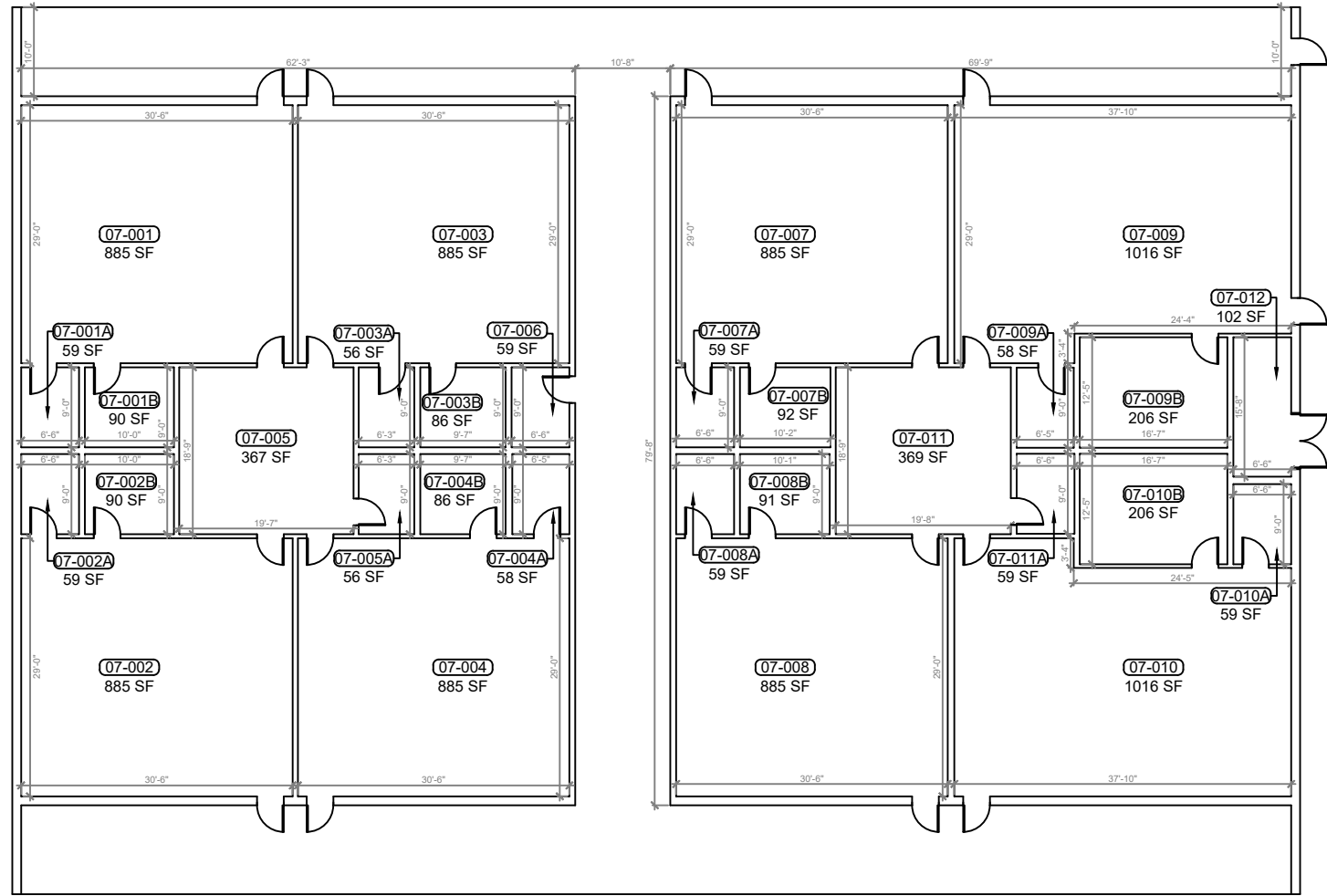
DATE  
, PE  
FL PROFESSIONAL ENGINEER LIC. #

**Eustis Elementary School**  
**(FISH PLAN)**  
714 Citrus Ave, Eustis,  
FL 32726

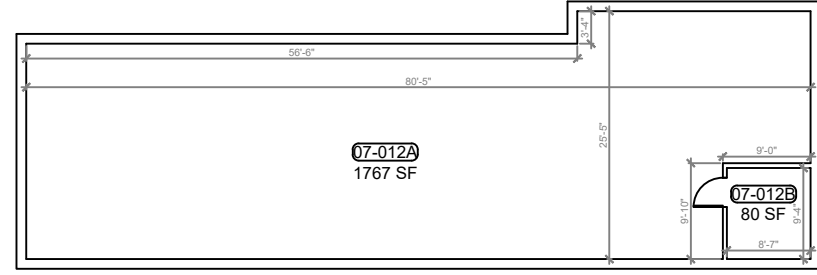
SHEET DESCRIPTION  
**BUILDING 05**

SHEET NUMBER  
**B-04**

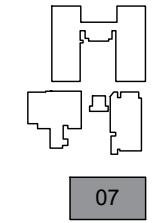
ARCHIS TECHNOLOGIES - \\server-1\H\Archis\21-027 Eustis ES\From ISP\2021-02-18\896\_Lake County Fish Survey\_Eustis ES.dwg February 18, 2021 21:26:10 PC20



**1 BUILDING 07 FIRST FLOOR PLAN**  
SCALE: 1/8"=1'-0"



**2 BUILDING 07 MEZZANINE FLOOR PLAN**  
SCALE: 1/8"=1'-0"



**KEY PLAN**

REV	DATE	DESCRIPTION
A	02/12/2021	PRELIMINARY FISH PLAN
B		
0		
1		
2		
3		
4		
5		
6		

ARCHIS PROJECT NO.:  
DRAWN BY: SH CHECKED BY: CB



**C M I**  
158 Terra Mango Loop, Suite B,  
Orlando, FL 32835  
Main: (407) 293-4168

PREPARED BY:  
**ARCHIS**  
350 E. Crown Point Road, Suite 1100  
Winter Garden, FL 34787  
Main: 888.324.2557  
Direct: 407.439.1594

DATE  
, PE  
FL PROFESSIONAL ENGINEER LIC. #

**Eustis Elementary School (FISH PLAN)**  
714 Citrus Ave, Eustis, FL 32726

SHEET DESCRIPTION  
**BUILDING 07 & MEZZANINE**

SHEET NUMBER  
**B-05**