

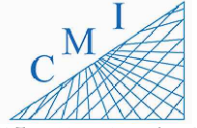
EUSTIS HIGH SCHOOL ANNEX



REV	DATE	DESCRIPTION
A	02/05/21	PRELIMINARY FISH PLAN
B		
0		
1		
2		
3		
4		
5		
6		

ARCHIS PROJECT NO.:

DRAWN BY:	CHECKED BY:
SH	YP



158 Terra Mango Loop, Suite B,
Orlando, FL 32835
Main: (407) 293-4168

PREPARED BY:



350 E. Crown Point Road, Suite 1100
Winter Garden, FL 34787
Main: 888.324.2557
Direct: 407.439.1594

DATE _____
_____, PE
FL PROFESSIONAL ENGINEER LIC. # _____

**Eustis High School Annex
(FISH PLAN)**
1801 Bates Ave,
Eustis, FL

SHEET DESCRIPTION
AERIAL VIEW

SHEET NUMBER
SP-01

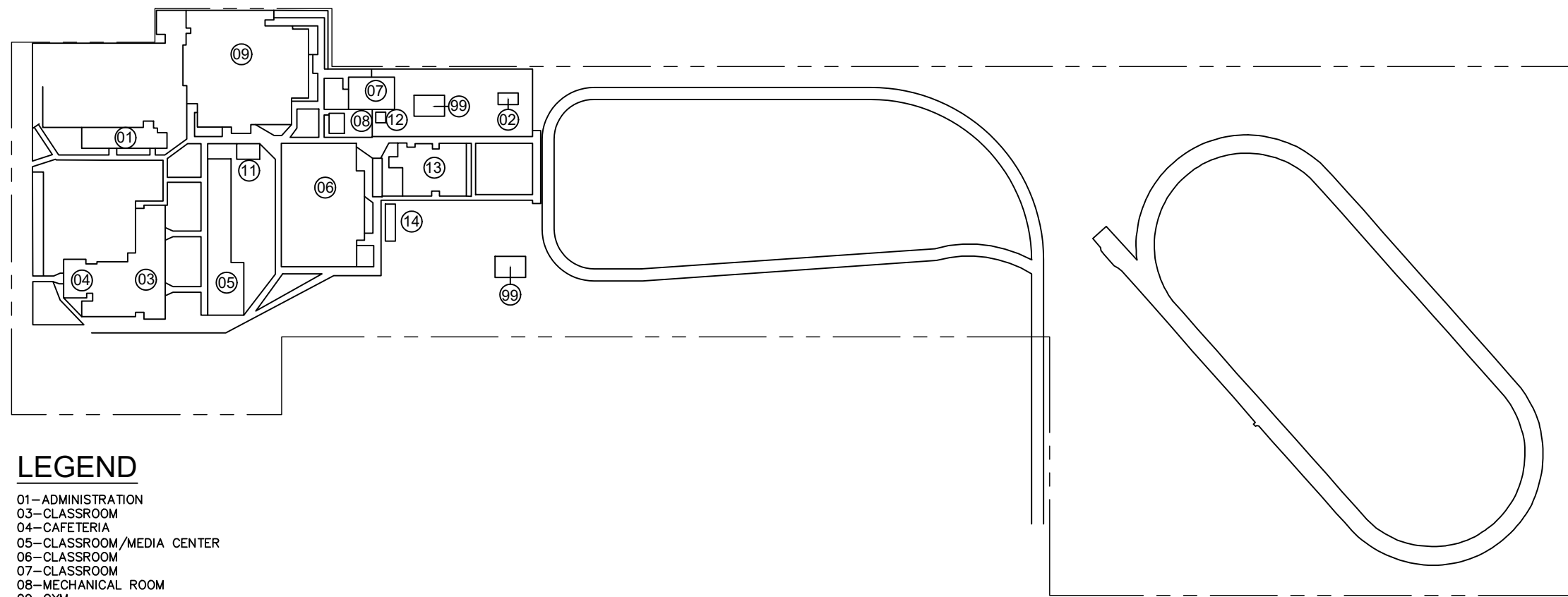
INDEX OF DRAWINGS

SHT. NO.	DESCRIPTION
SP-01	AERIAL
SP-02	SITE PLAN
B-01	BUILDING 01 & 02
B-02	BUILDING 03 & 04
B-03	BUILDING 05
B-04	BUILDING 06 & 14
B-05	BUILDING 07, 08 & 12
B-06	BUILDING 09
B-07	BUILDING 11 & 13

1 AERIAL VIEW
SCALE: N.T.S.

ARCHIS TECHNOLOGIES - \\server-1\H\Archis\21-011 Eustis HS Annex\From ISP\05-02-2021\896_Lake County_Eustis HS Annex CADD.dwg February 5, 2021 13:02:39 PC20

ARCHIS TECHNOLOGIES - \\server-1\H\Archis\21-011 Eustis HS Annex\From ISP\05-02-2021\896_Lake County_Eustis HS Annex CADD.dwg February 5, 2021 13:02:45 PC20



LEGEND

- 01-ADMINISTRATION
- 03-CLASSROOM
- 04-CAFETERIA
- 05-CLASSROOM/MEDIA CENTER
- 06-CLASSROOM
- 07-CLASSROOM
- 08-MECHANICAL ROOM
- 09-GYM
- 10-CLASSROOM
- 11-CUSTODIAL STORAGE
- 12-FAMMABLE STORAGE

1 OVERALL SITE PLAN
 SP-02 SCALE: 1:64

REV	DATE	DESCRIPTION
A	02/05/21	PRELIMINARY FISH PLAN
B		
0		
1		
2		
3		
4		
5		
6		

ARCHIS PROJECT NO.:
 DRAWN BY: SH CHECKED BY: YP



C M I
 158 Terra Mango Loop, Suite B,
 Orlando, FL 32835
 Main: (407) 293-4168

PREPARED BY:
ARCHIS
 350 E. Crown Point Road, Suite 1100
 Winter Garden, FL 34787
 Main: 888.324.2557
 Direct: 407.439.1594

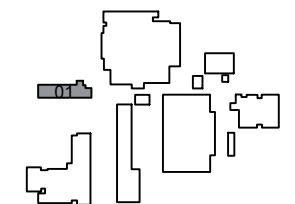
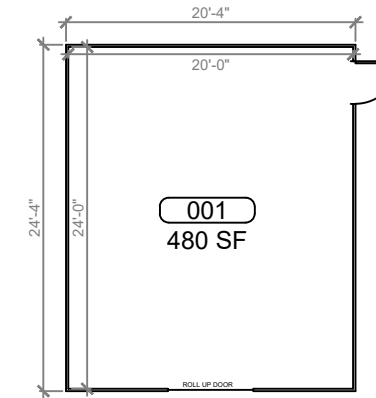
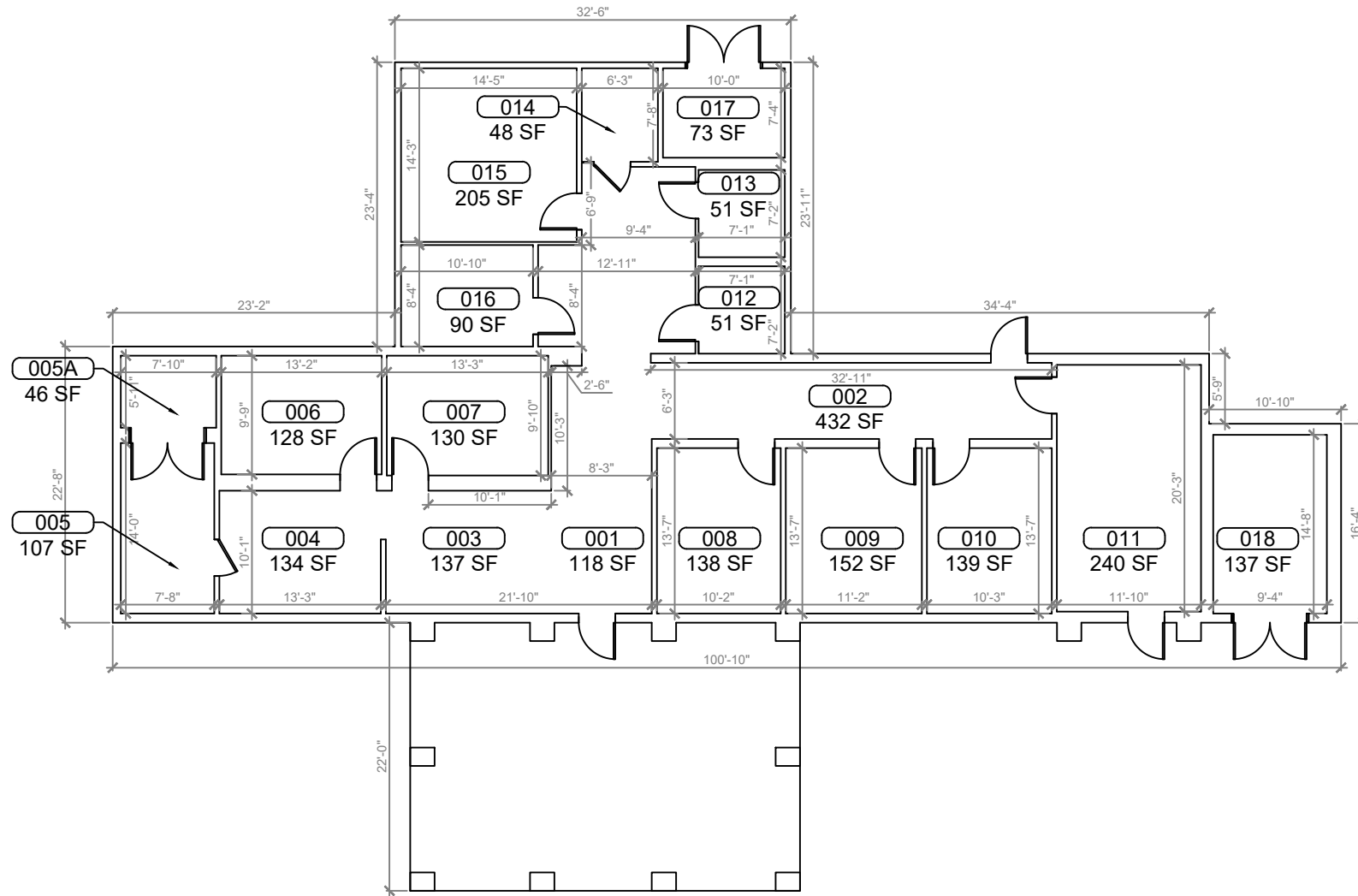
DATE

 , PE
 FL PROFESSIONAL ENGINEER LIC. #

**Eustis High School Annex
 (FISH PLAN)**
 1801 Bates Ave,
 Eustis, FL

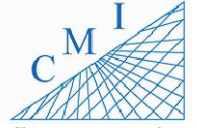
SHEET DESCRIPTION
OVERALL SITE PLAN

SHEET NUMBER
SP-02



REV	DATE	DESCRIPTION
A	02/05/21	PRELIMINARY FISH PLAN
B		
0		
1		
2		
3		
4		
5		
6		

ARCHIS PROJECT NO.:
DRAWN BY: SH CHECKED BY: YP



158 Terra Mango Loop, Suite B,
Orlando, FL 32835
Main: (407) 293-4168

PREPARED BY:
ARCHIS
350 E. Crown Point Road, Suite 1100
Winter Garden, FL 34787
Main: 888.324.2557
Direct: 407.439.1594

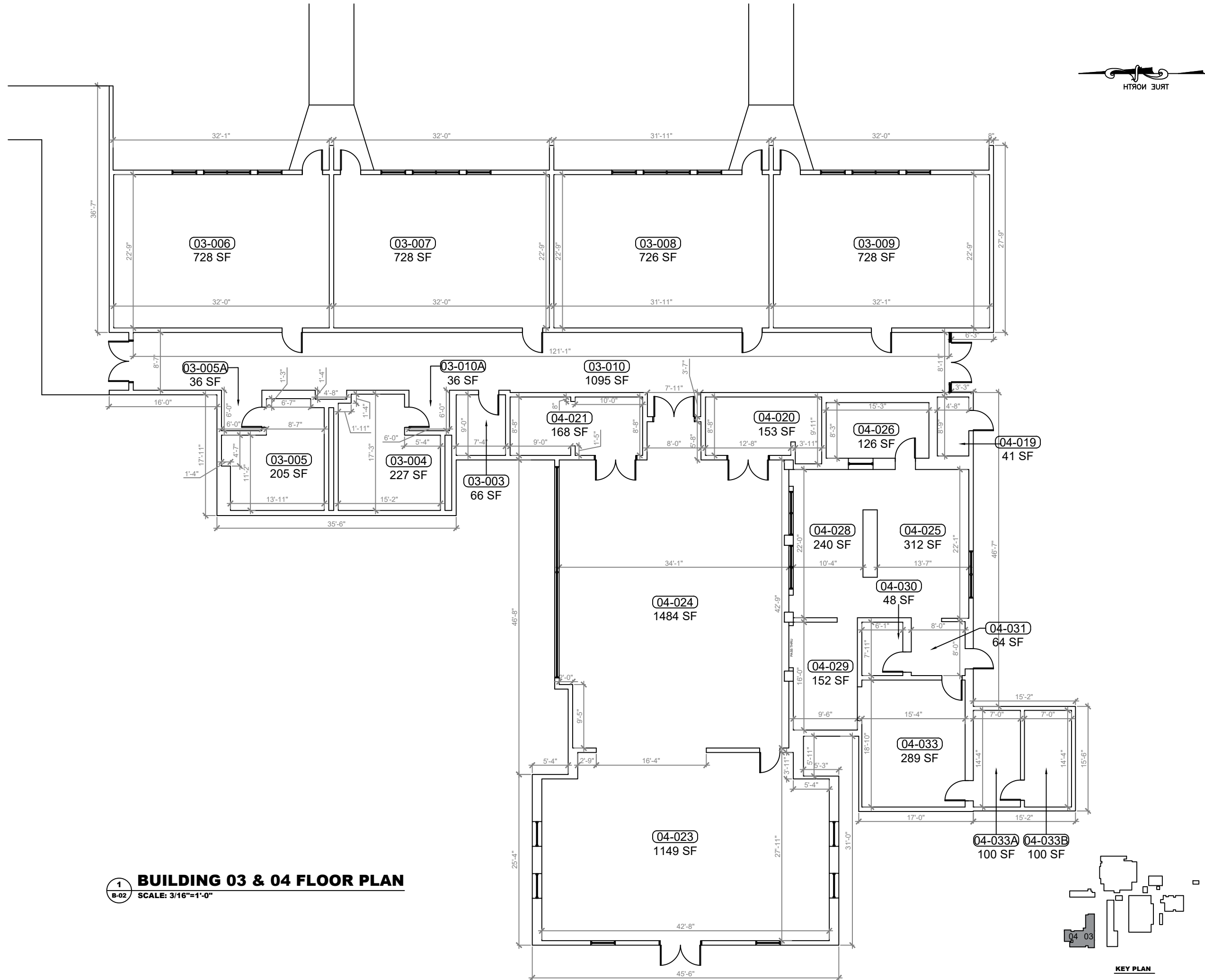
DATE
, PE
FL PROFESSIONAL ENGINEER LIC. #

Eustis High School Annex (FISH PLAN)
1801 Bates Ave,
Eustis, FL

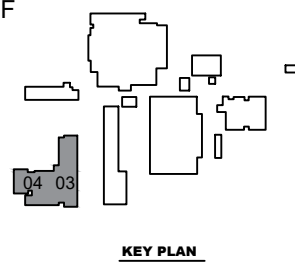
SHEET DESCRIPTION
BUILDING 01 & 02

SHEET NUMBER
B-01

ARCHIS TECHNOLOGIES - \\server-1\H\Archis\21-011 Eustis HS Annex\From ISP\05-02-2021\896_Lake County_Eustis HS Annex CADD.dwg February 5, 2021 13:02:52 PC20

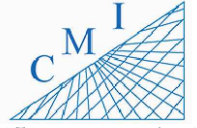


1
B-02 **BUILDING 03 & 04 FLOOR PLAN**
SCALE: 3/16"=1'-0"



REV	DATE	DESCRIPTION
A	02/05/21	PRELIMINARY FISH PLAN
B		
0		
1		
2		
3		
4		
5		
6		

ARCHIS PROJECT NO.:
DRAWN BY: SH CHECKED BY: YP



158 Terra Mango Loop, Suite B,
Orlando, FL 32835
Main: (407) 293-4168

PREPARED BY:
ARCHIS
350 E. Crown Point Road, Suite 1100
Winter Garden, FL 34787
Main: 888.324.2557
Direct: 407.439.1594

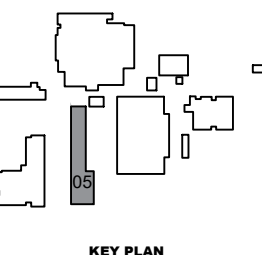
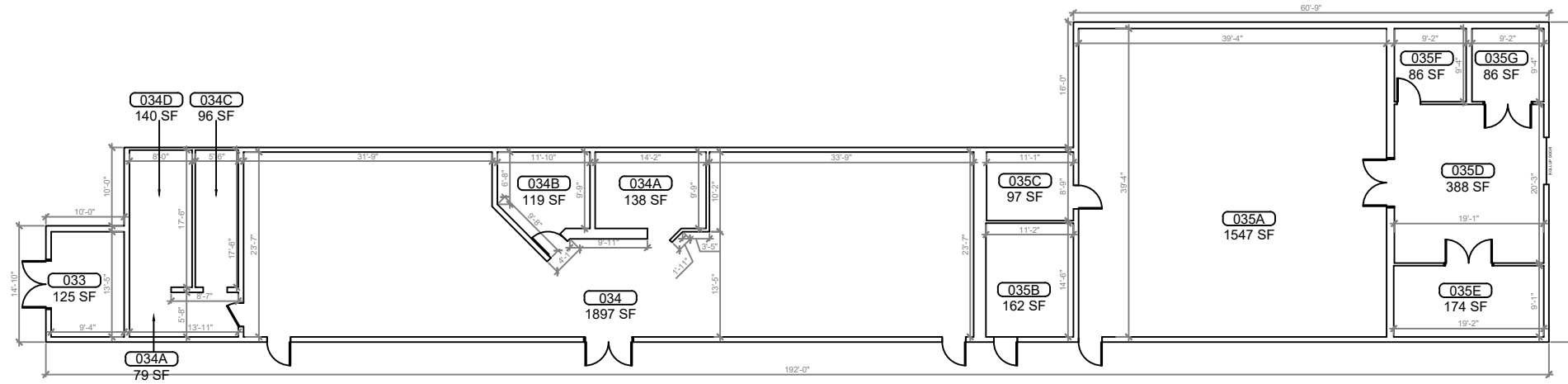
DATE
, PE
FL PROFESSIONAL ENGINEER LIC. #

Eustis High School Annex (FISH PLAN)

1801 Bates Ave,
Eustis, FL

SHEET DESCRIPTION
BUILDING 03 & 04

SHEET NUMBER
B-02



BUILDING 05 FLOOR PLAN
SCALE: 1/8"=1'-0"

REV	DATE	DESCRIPTION
A	02/05/21	PRELIMINARY FISH PLAN
B		
0		
1		
2		
3		
4		
5		
6		

ARCHIS PROJECT NO.:
DRAWN BY: SH CHECKED BY: YP



C M I
158 Terra Mango Loop, Suite B,
Orlando, FL 32835
Main: (407) 293-4168

PREPARED BY:
ARCHIS
350 E. Crown Point Road, Suite 1100
Winter Garden, FL 34787
Main: 888.324.2557
Direct: 407.439.1594

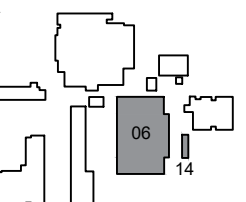
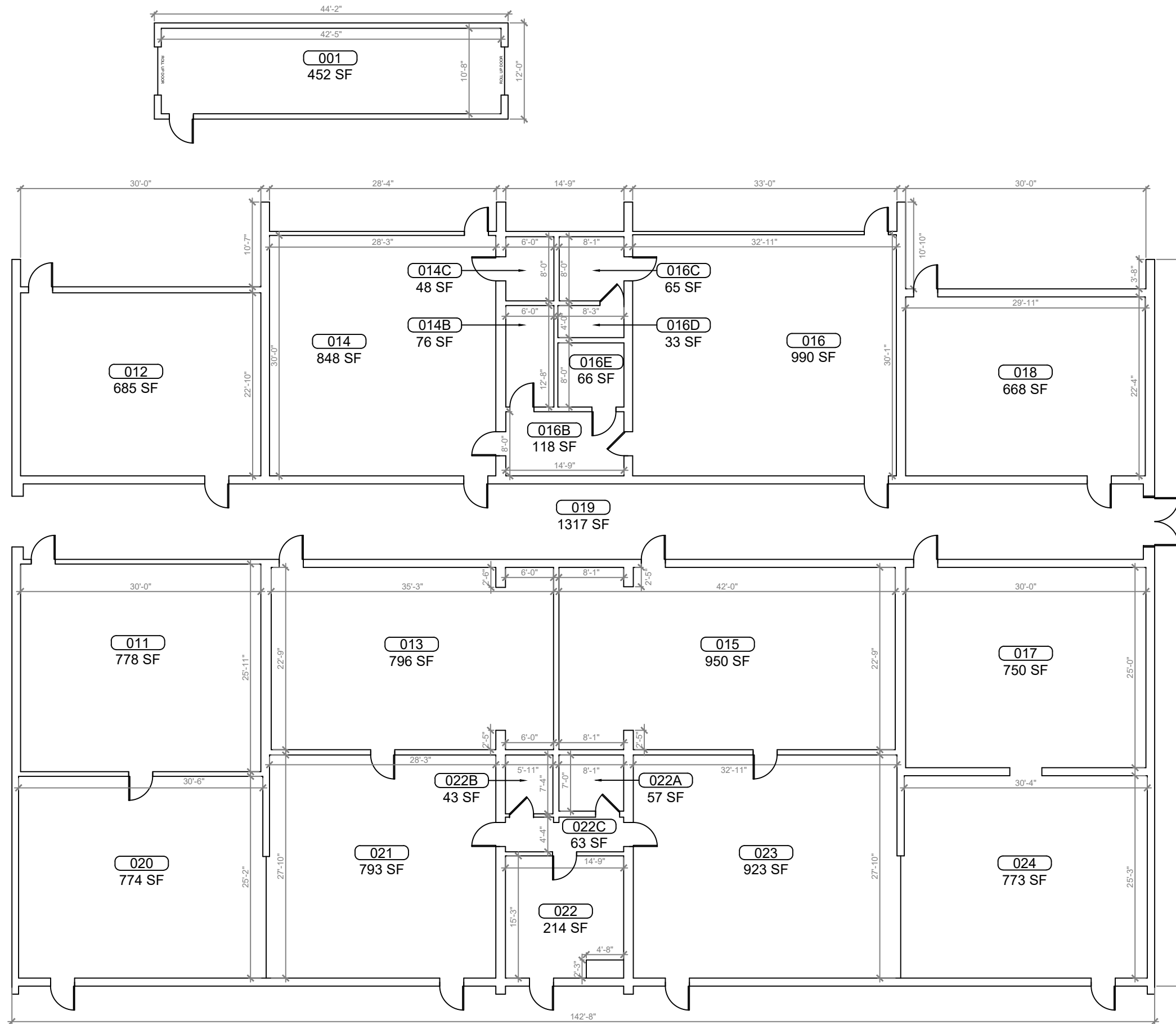
DATE _____
, PE
FL PROFESSIONAL ENGINEER LIC. # _____

Eustis High School Annex (FISH PLAN)
1801 Bates Ave,
Eustis, FL

SHEET DESCRIPTION
BUILDING 05

SHEET NUMBER
B-03

ARCHIS TECHNOLOGIES - \\server-1\H\Archis\21-011 Eustis HS Annex\From ISP\05-02-2021\896_Lake County_Eustis HS Annex CADD.dwg February 5, 2021 13:03:02 PC20



1
B-04 **BUILDING 06 & 14 FLOOR PLAN**
SCALE: 3/16"=1'-0"

KEY PLAN

REV	DATE	DESCRIPTION
A	02/05/21	PRELIMINARY FISH PLAN
B		
0		
1		
2		
3		
4		
5		
6		

ARCHIS PROJECT NO.:
DRAWN BY: SH CHECKED BY: YP



CM I
158 Terra Mango Loop, Suite B,
Orlando, FL 32835
Main: (407) 293-4168

PREPARED BY:
ARCHIS
350 E. Crown Point Road, Suite 1100
Winter Garden, FL 34787
Main: 888.324.2557
Direct: 407.439.1594

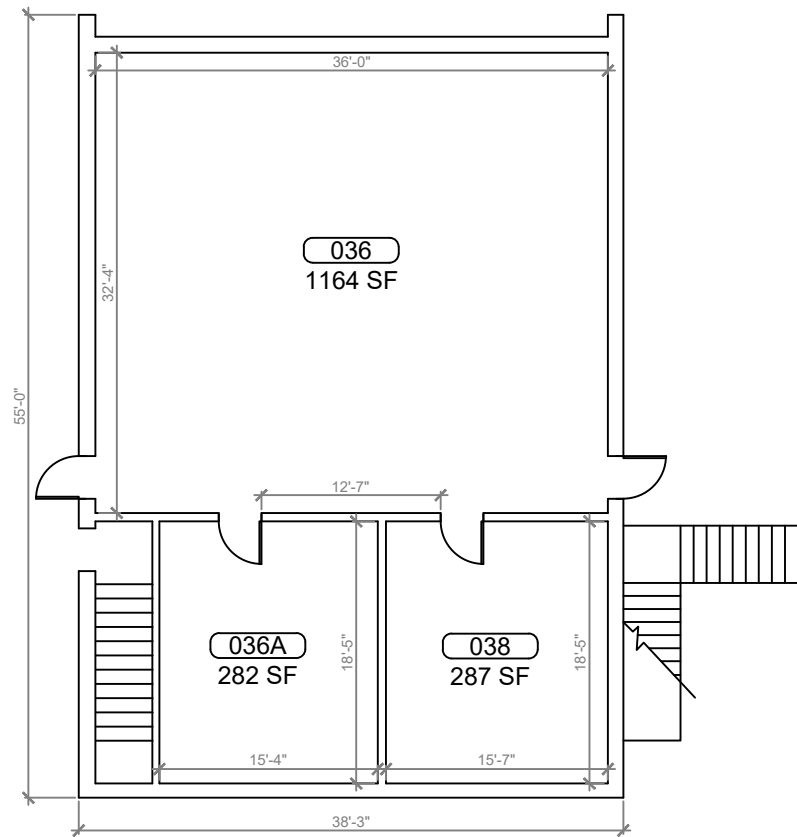
DATE _____
, PE
FL PROFESSIONAL ENGINEER LIC. # _____

Eustis High School Annex (FISH PLAN)

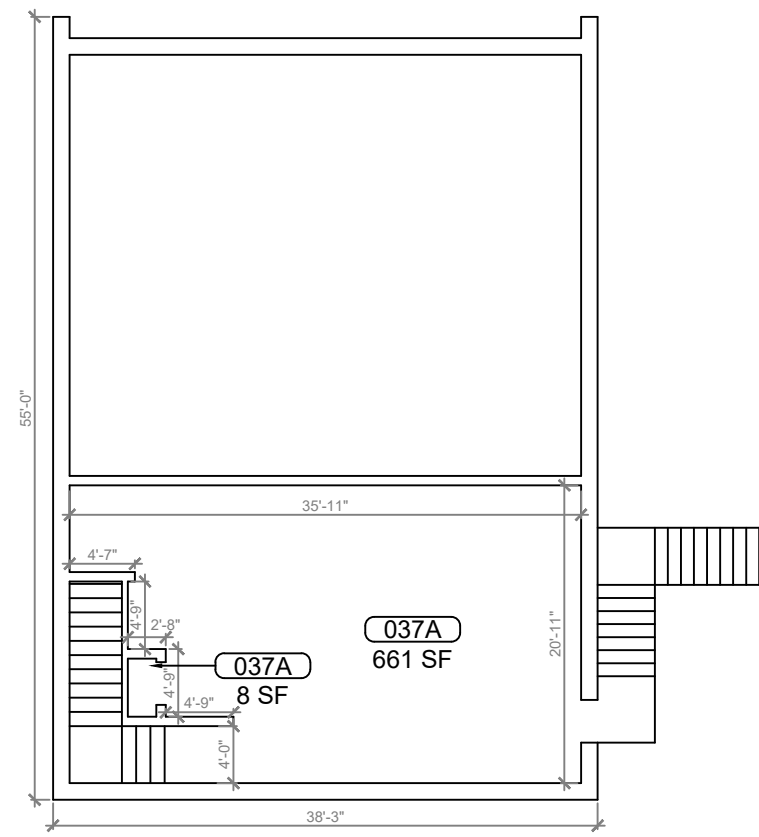
1801 Bates Ave,
Eustis, FL

SHEET DESCRIPTION
BUILDING 06 & 14

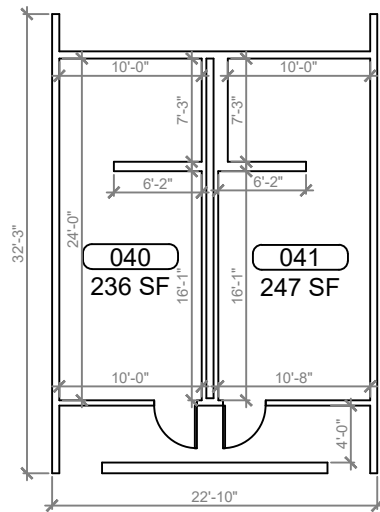
SHEET NUMBER
B-04



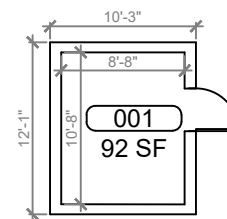
1 BUILDING 07 FIRST FLOOR PLAN
 B-05 SCALE: 3/16"=1'-0"



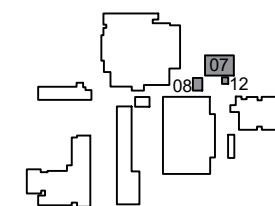
2 BUILDING 07 SECOND FLOOR PLAN
 B-05 SCALE: 3/16"=1'-0"



3 BUILDING 08 FLOOR PLAN
 B-05 SCALE: 3/16"=1'-0"



4 BUILDING 12 FLOOR PLAN
 B-05 SCALE: 3/16"=1'-0"



KEY PLAN



REV	DATE	DESCRIPTION
A	02/05/21	PRELIMINARY FISH PLAN
B		
0		
1		
2		
3		
4		
5		
6		

ARCHIS PROJECT NO.:	
DRAWN BY:	CHECKED BY:
SH	YP



158 Terra Mango Loop, Suite B,
 Orlando, FL 32835
 Main: (407) 293-4168

PREPARED BY:



350 E. Crown Point Road, Suite 1100
 Winter Garden, FL 34787
 Main: 888.324.2557
 Direct: 407.439.1594

DATE

, PE
 FL PROFESSIONAL ENGINEER LIC. #

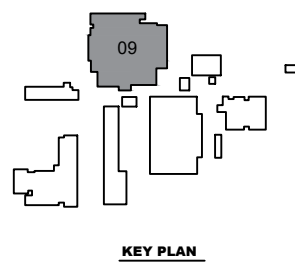
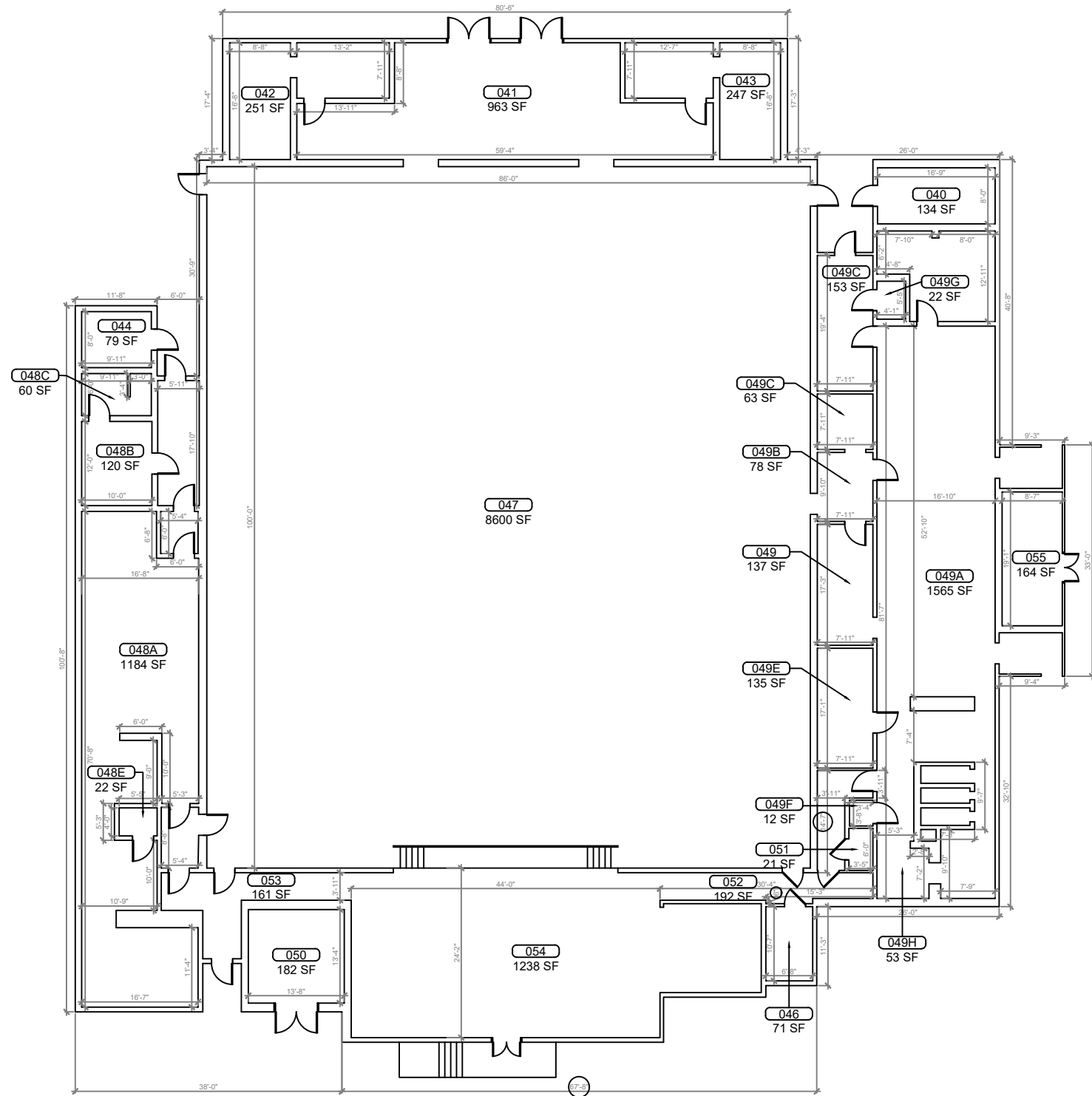
**Eustis High School
 Annex
 (FISH PLAN)**

1801 Bates Ave,
 Eustis, FL

SHEET DESCRIPTION
**BUILDING
 07, 08 & 12**

SHEET NUMBER

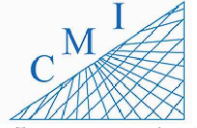
B-05



1
B-06 **BUILDING 09 FLOOR PLAN**
SCALE: 1/8"=1'-0"

REV	DATE	DESCRIPTION
A	02/05/21	PRELIMINARY FISH PLAN
B		
0		
1		
2		
3		
4		
5		
6		

ARCHIS PROJECT NO.:
DRAWN BY: SH CHECKED BY: YP



158 Terra Mango Loop, Suite B,
Orlando, FL 32835
Main: (407) 293-4168

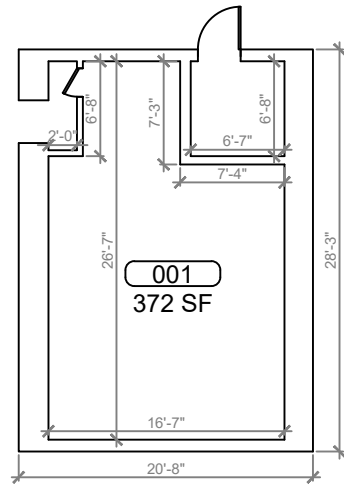
PREPARED BY:
ARCHIS
350 E. Crown Point Road, Suite 1100
Winter Garden, FL 34787
Main: 888.324.2557
Direct: 407.439.1594

DATE
, PE
FL PROFESSIONAL ENGINEER LIC. #

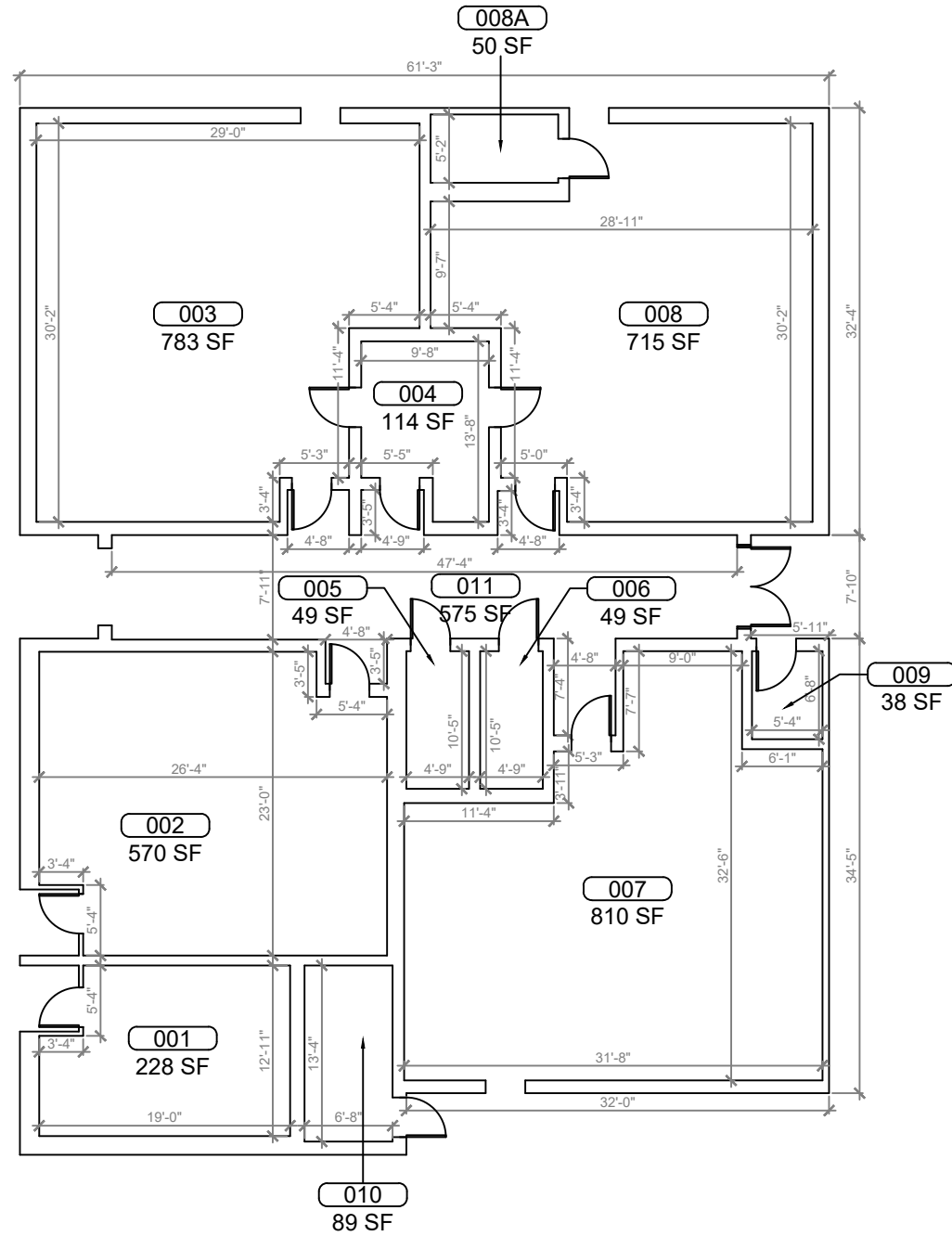
Eustis High School Annex (FISH PLAN)
1801 Bates Ave,
Eustis, FL

SHEET DESCRIPTION
BUILDING 09

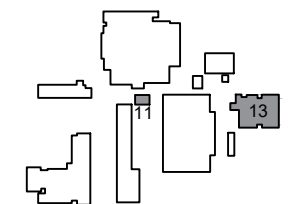
SHEET NUMBER
B-06



1
B-07 **BUILDING 11 FLOOR PLAN**
SCALE: 3/16"=1'-0"



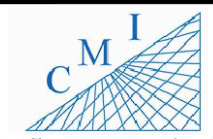
2
B-07 **BUILDING 13 FLOOR PLAN**
SCALE: 3/16"=1'-0"



KEY PLAN

REV	DATE	DESCRIPTION
A	02/05/21	PRELIMINARY FISH PLAN
B		
0		
1		
2		
3		
4		
5		
6		

ARCHIS PROJECT NO.:
DRAWN BY: SH CHECKED BY: YP



158 Terra Mango Loop, Suite B,
Orlando, FL 32835
Main: (407) 293-4168

PREPARED BY:
ARCHIS
350 E. Crown Point Road, Suite 1100
Winter Garden, FL 34787
Main: 888.324.2557
Direct: 407.439.1594

DATE
, PE
FL PROFESSIONAL ENGINEER LIC. #

Eustis High School Annex (FISH PLAN)
1801 Bates Ave,
Eustis, FL

SHEET DESCRIPTION
BUILDING 11 & 13

SHEET NUMBER
B-07