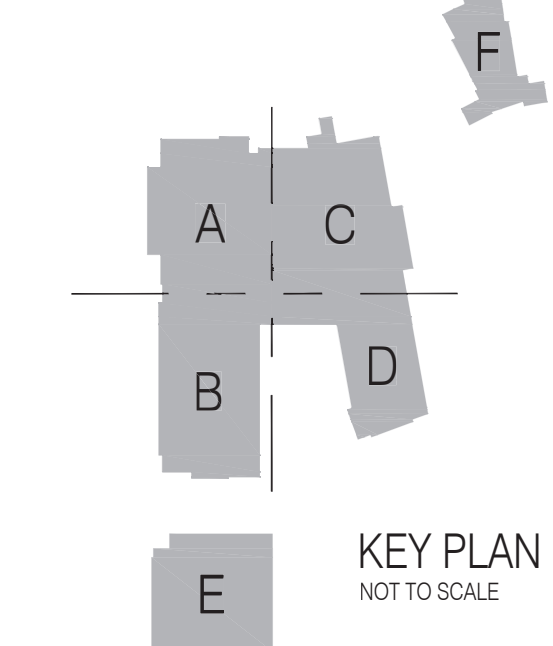
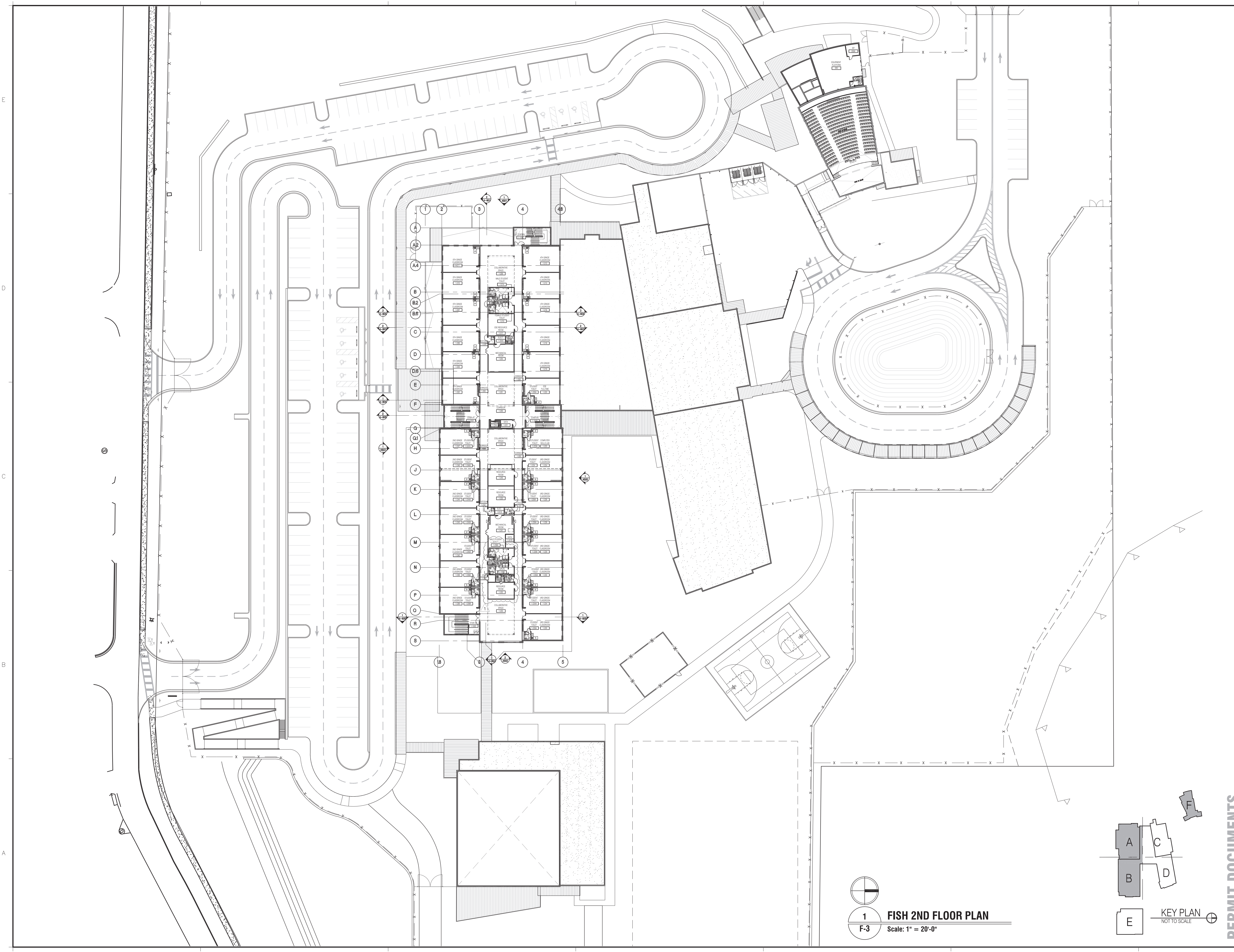


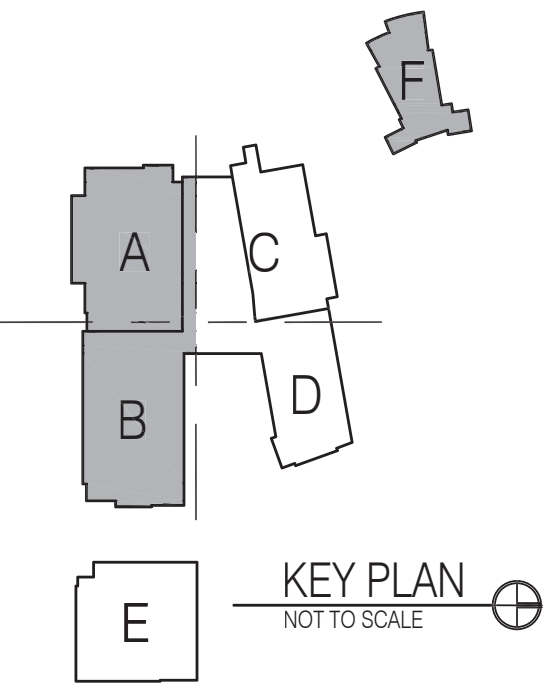
1
F-2
FISH 1ST FLOOR PLAN
Scale: 1" = 30'-0"



<p>Architect AAC 001431</p> <p>ZYSCOVICH ARCHITECTS</p> <p>250 S Park Ave., Suite 510 Winter Park, FL 32789</p> <p>t 407.674.1959 e info@zyscovich.com w www.zyscovich.com</p>		<p>Project</p> <p>Lake County Schools Aurelia M. Cole Academy New + Renovation Construction</p> <p>301 East Avenue, Clermont, FL 34711 Lake County Schools Project # 4768LH</p>		<p>Civil Engineer</p> <p>Kima Weeks Civil Engineers 100 South Orange Ave., Suite 206 Orlando, FL 32801 (407) 478-8700 Tel (407) 478-8700 Fax</p> <p>Bornet Design Group 400 South Orange Ave., Suite 206 Orlando, FL 32801 (407) 621-1588 Tel (407) 621-1588 Fax</p>		<p>Structural Engineer</p> <p>BBK Structural Engineers 1000 West Center Parkway Suite 201 Winter Park, FL 32789 (407) 945-5400 Tel (407) 945-5400 Fax</p> <p>MEP/IT Engineers Metem Professional Engineering 1000 West Center Parkway Suite 201 Winter Park, FL 32789 (407) 945-5400 Tel (407) 945-5400 Fax</p>		<p>Theatre Consultant</p> <p>TSG Design Solutions 1000 West Center Parkway Suite 201 Winter Park, FL 32789 (501) 397-4511 Tel</p> <p>Educational Technology</p> <p>Layer 8 Solutions 7701 W. 26th Avenue, Unit 2 Tomball, Texas 77317 (281) 350-0071</p>	
<p>Architect Seal</p> <p>Jose L. Murguideo, RA Reg. No. AR0010570</p>		<p>Copyright © 2019 Zyscovich, Inc. All rights reserved. These drawings and specifications are the property of Zyscovich, Inc. Whether the project for which they were prepared is executed or not, they are not to be used in any manner on other projects or extensions to the project except by agreement in writing and with the appropriate compensation to Zyscovich, Inc. Reproduction of specifications without the written consent of Zyscovich, Inc. is prohibited.</p>		<p>Revised:</p>		<p>PERMIT DOCUMENTS</p>			
<p>FISH 1ST FLOOR PLAN</p>		<p>2002CMSS 04 - 20 - 2022</p>		<p>F-2</p>					



1 FISH 2ND FLOOR PLAN
 F-3 Scale: 1" = 20'-0"



<p>Architect ZYSCOVICH ARCHITECTS 250 S Park Ave., Suite 510 Winter Park, FL 32789 t 407.674.1959 e info@zyscovich.com w www.zyscovich.com</p>		<p>Project Lake County Schools Aurelia M. Cole Academy New + Renovation Construction 301 East Avenue, Clermont, FL 34711 Lake County Schools Project # 4789LH</p>	
<p>Seal Jose L. Murguido, RA Reg. No. AR0010570</p>		<p>Theatre Consultant TSG Design Solutions West Palm Beach, Florida 33406 (561) 397-4511 Tel</p> <p>Educational Technology Layer 8 Solutions 7701 W. 26th Avenue, Unit 2 Hialeah, Florida 33018 (305) 742-5000 Tel</p>	
<p>Civil Engineer Klima Weeks Civil Engineers 400 South Orlando Ave., Ste. 201 Winter Park, Florida 32789 (407) 478-8700 Tel</p> <p>Structural Engineer BBK Structural Engineers 1401 US Center Parkway Suite 201 Winter Park, Florida 32789 (407) 745-5400 Tel</p>		<p>MEP/PT Engineers Metem Professional Engineering 1401 US Center Parkway Suite 201 Winter Park, Florida 32789 (407) 745-5400 Tel</p>	
<p>Landscaper Bonnet Design Group 400 South Orlando Ave., Ste. 201 Winter Park, Florida 32789 (407) 652-1588 Tel</p>		<p>Structural Engineer BBK Structural Engineers 1401 US Center Parkway Suite 201 Winter Park, Florida 32789 (407) 745-5400 Tel</p>	

PERMIT DOCUMENTS

FISH 2ND FLOOR PLAN	
2002CMSS	04 - 20 - 2022
F-3	

Revised:
 02/25/22
 REV. 1

Copyright © 2019 Zyscovich, Inc. All rights reserved. These drawings and specifications are the property of Zyscovich, Inc. and shall remain the property of Zyscovich, Inc. whether the project for which they were prepared is executed or not. They are not to be used in any manner on other projects or extensions of the project except by agreement in writing and with the appropriate compensation to Zyscovich, Inc. Reproduction of specifications without the written consent of Zyscovich, Inc. is prohibited.

