

Astatula Elementary School



1
SP-01 **AERIAL VIEW**
SCALE: N.T.S.

INDEX OF DRAWINGS	
SHT. NO.	DESCRIPTION
SP-01	AERIAL
SP-02	SITE PLAN
B-01	BUILDING 01
B-02	BUILDING 02
B-03	BUILDING 03
B-04	BUILDING 04
B-05	BUILDING 05
B-06	BUILDING 06
B-07	BUILDING 07

REV	DATE	DESCRIPTION
A	02/03/21	PRELIMINARY FISH PLAN
B		
0		
1		
2		
3		
4		
5		
6		

ARCHIS PROJECT NO.:

DRAWN BY:	CHECKED BY:
CB	SH



PREPARED BY:



350 E. Crown Point Road, Suite 1100
Winter Garden, FL 34787
Main: 888.324.2557
Direct: 407.439.1594

DATE

, PE

FL PROFESSIONAL ENGINEER LIC. #

**Astatula Elementary
School
(FISH PLAN)**

13925 Florida Ave,
Astatula, FL

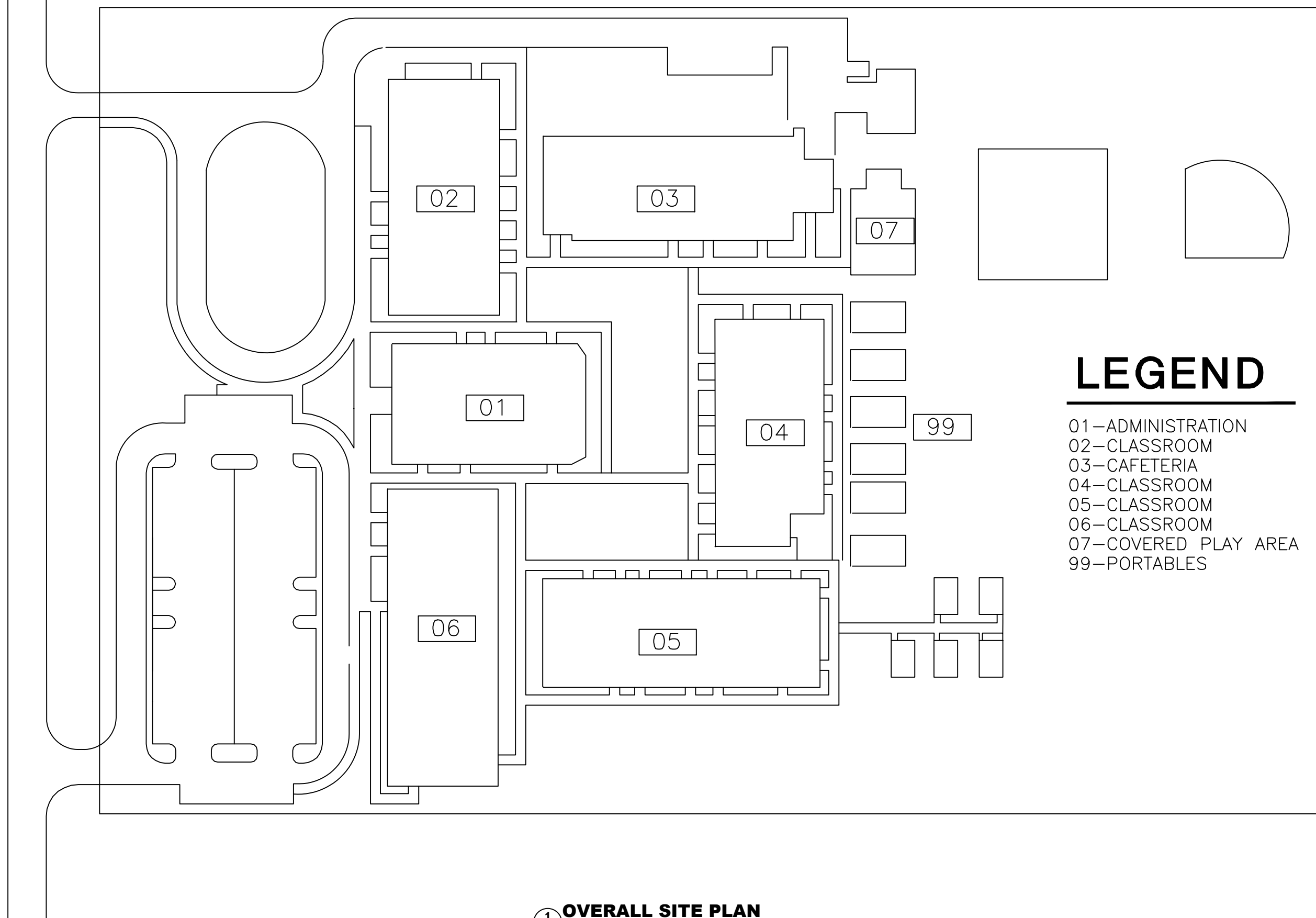
SHEET DESCRIPTION

AERIAL VIEW

SHEET NUMBER

SP-01

ARCHIS TECHNOLOGIES - \\server-1\H\Archis\21-008 Astatula ES\From ISP\03-02-2021\896_Lake County Fish Survey_Astatula ES.dwg February 3, 2021 10:29:47 PC20



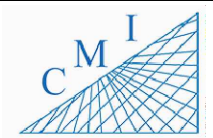
LEGEND

- 01-ADMINISTRATION
- 02-CLASSROOM
- 03-CAFETERIA
- 04-CLASSROOM
- 05-CLASSROOM
- 06-CLASSROOM
- 07-COVERED PLAY AREA
- 99-PORTABLES

1 **OVERALL SITE PLAN**
 SP-02 SCALE: 1/32

REV	DATE	DESCRIPTION
A	02/03/21	PRELIMINARY FISH PLAN
B		
0		
1		
2		
3		
4		
5		
6		

ARCHIS PROJECT NO.:
 DRAWN BY: CB
 CHECKED BY: SH



158 Terra Mango Loop, Suite B,
 Orlando, FL 32835
 Main: (407) 293-4168

PREPARED BY:
ARCHIS
 350 E. Crown Point Road, Suite 1100
 Winter Garden, FL 34787
 Main: 888.324.2557
 Direct: 407.439.1594

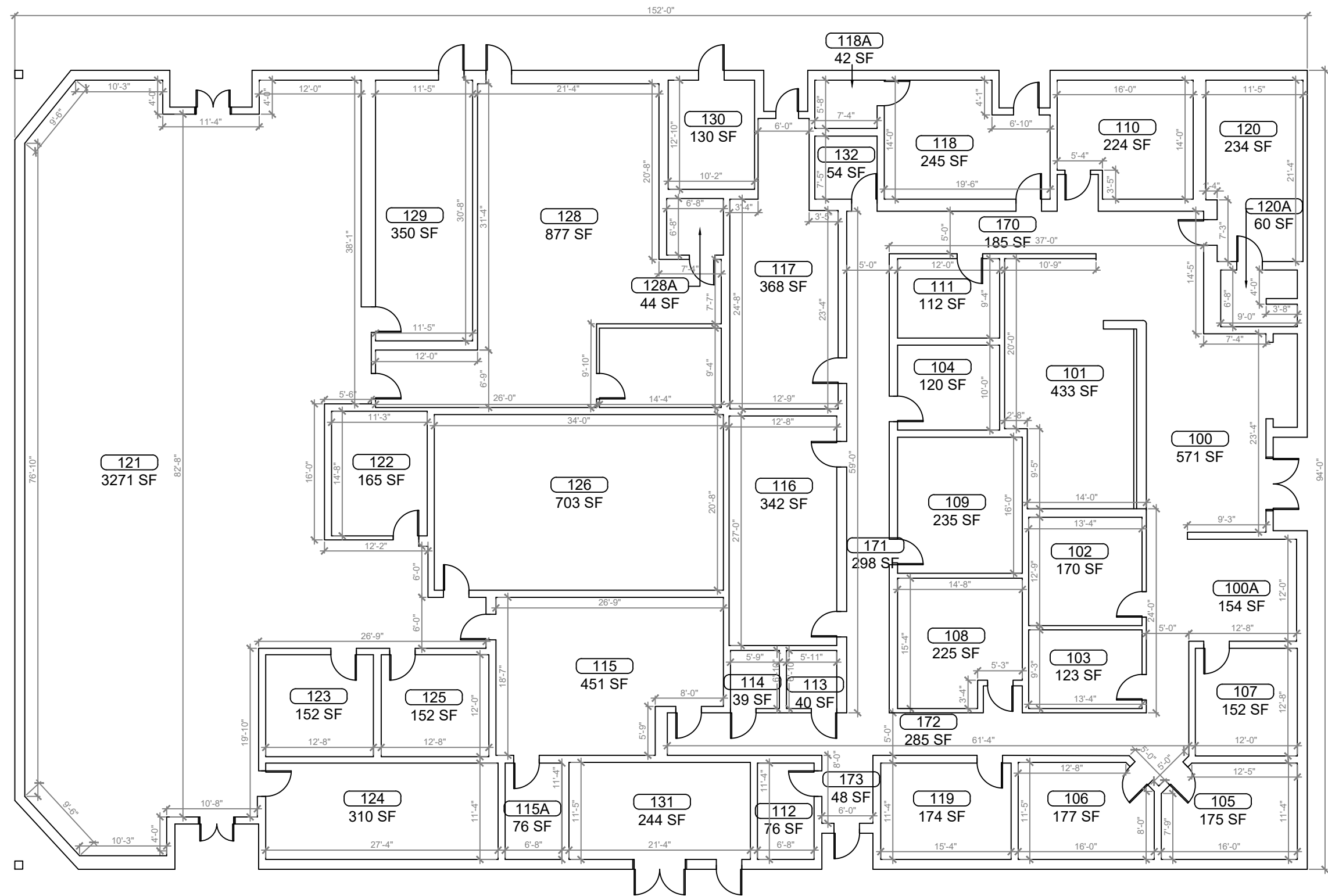
DATE
 , PE
 FL PROFESSIONAL ENGINEER LIC. #

Astatula Elementary School
(FISH PLAN)
 13925 Florida Ave,
 Astatula, FL

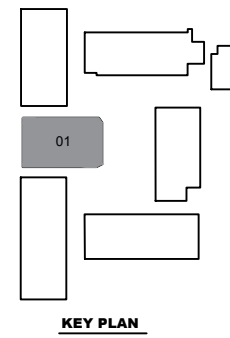
SHEET DESCRIPTION
OVERALL SITE PLAN

SHEET NUMBER
SP-02

ARCHIS TECHNOLOGIES - \\server-1\H\Archis\21-008 Astatula ES\From ISP\03-02-2021\896_Lake County Fish Survey_Astatula ES.dwg February 3, 2021 10:29:48 PC20



1 BUILDING 01 FLOOR PLAN
B-01 SCALE: 3/16"=1'-0"



REV	DATE	DESCRIPTION
A	02/03/21	PRELIMINARY FISH PLAN
B		
0		
1		
2		
3		
4		
5		
6		

ARCHIS PROJECT NO.:
 DRAWN BY: CB CHECKED BY: SH



CMI
 158 Terra Mango Loop, Suite B,
 Orlando, FL 32835
 Main: (407) 293-4168

PREPARED BY:
ARCHIS
 350 E. Crown Point Road, Suite 1100
 Winter Garden, FL 34787
 Main: 888.324.2557
 Direct: 407.439.1594

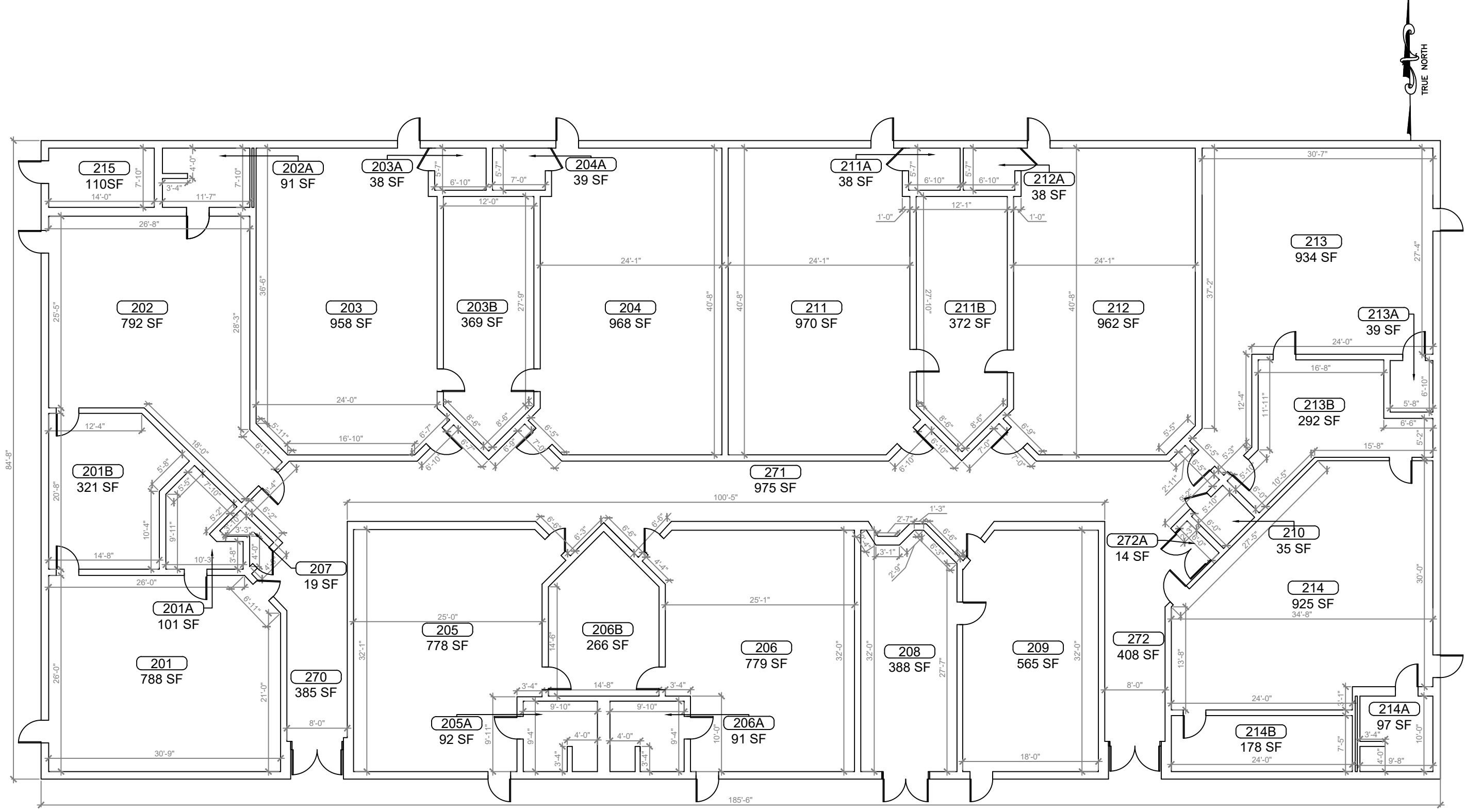
DATE
 , PE
 FL PROFESSIONAL ENGINEER LIC. #

Astatula Elementary School
(FISH PLAN)
 13925 Florida Ave,
 Astatula, FL

SHEET DESCRIPTION
BUILDING 01

SHEET NUMBER
B-01

ARCHIS TECHNOLOGIES - \\server-1\H\Archis\21-008 Astatula ES\From ISP\03-02-2021\896_Lake County Fish Survey_Astatula ES.dwg February 3, 2021 10:29:53 PC20



REV	DATE	DESCRIPTION
A	02/03/21	PRELIMINARY FISH PLAN
B		
0		
1		
2		
3		
4		
5		
6		

ARCHIS PROJECT NO.:
 DRAWN BY: CB
 CHECKED BY: SH



CMI
 158 Terra Mango Loop, Suite B,
 Orlando, FL 32835
 Main: (407) 293-4168

PREPARED BY:
ARCHIS
 350 E. Crown Point Road, Suite 1100
 Winter Garden, FL 34787
 Main: 888.324.2557
 Direct: 407.439.1594

DATE
 , PE
 FL PROFESSIONAL ENGINEER LIC. #

Astatula Elementary School
(FISH PLAN)

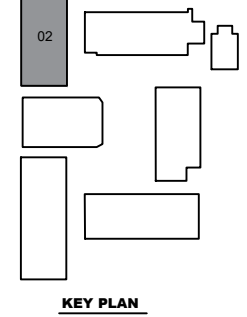
13925 Florida Ave,
 Astatula, FL

SHEET DESCRIPTION

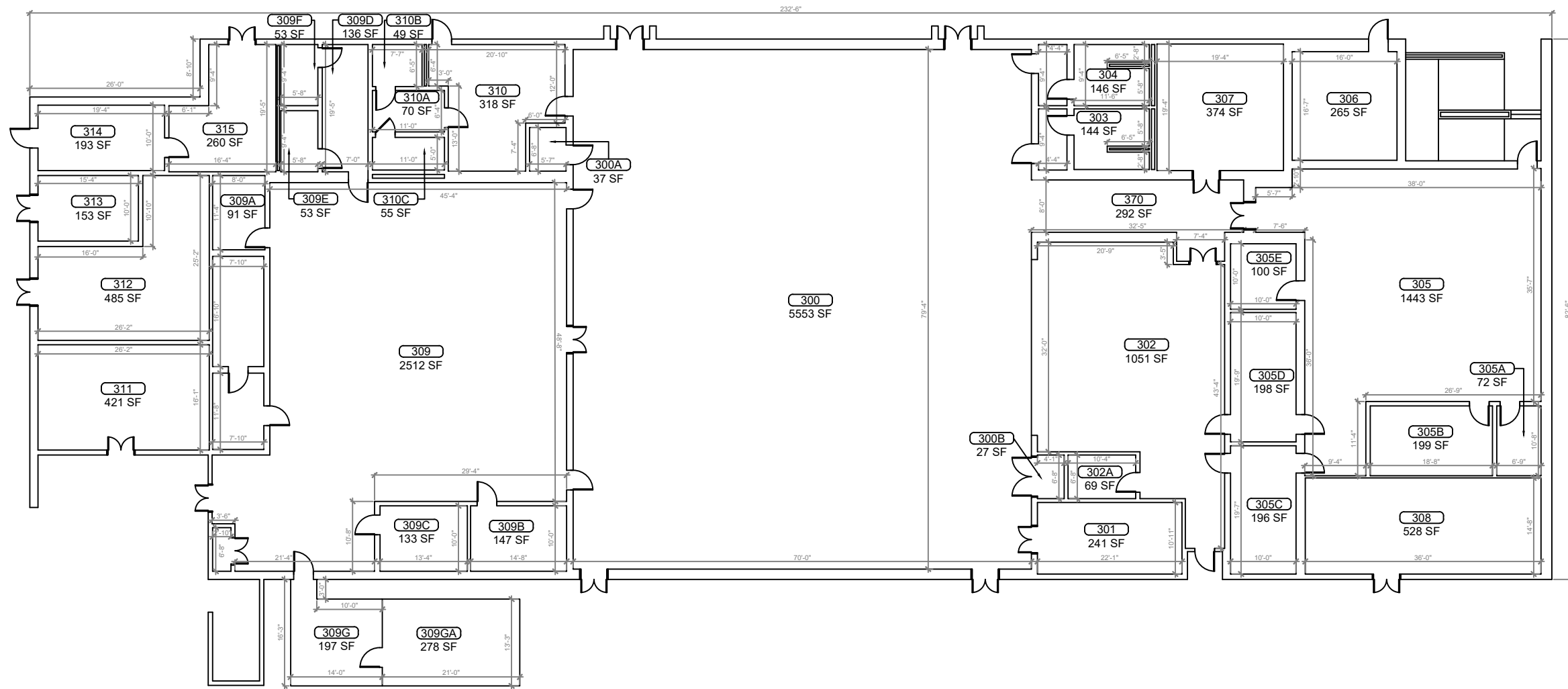
BUILDING 02

SHEET NUMBER
B-02

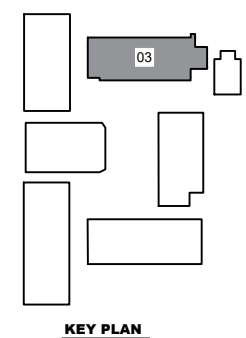
1 **BUILDING 02 FLOOR PLAN**
 B-02 SCALE: 3/16"=1'-0"



KEY PLAN



BUILDING 03 FIRST FLOOR PLAN
SCALE: 1/8"=1'-0"



REV	DATE	DESCRIPTION
A	02/03/21	PRELIMINARY FISH PLAN
B		
0		
1		
2		
3		
4		
5		
6		

ARCHIS PROJECT NO.:
DRAWN BY: CB
CHECKED BY: SH



CMI
158 Terra Mango Loop, Suite B,
Orlando, FL 32835
Main: (407) 293-4168

PREPARED BY:
ARCHIS
350 E. Crown Point Road, Suite 1100
Winter Garden, FL 34787
Main: 888.324.2557
Direct: 407.439.1594

DATE
, PE
FL PROFESSIONAL ENGINEER LIC. #

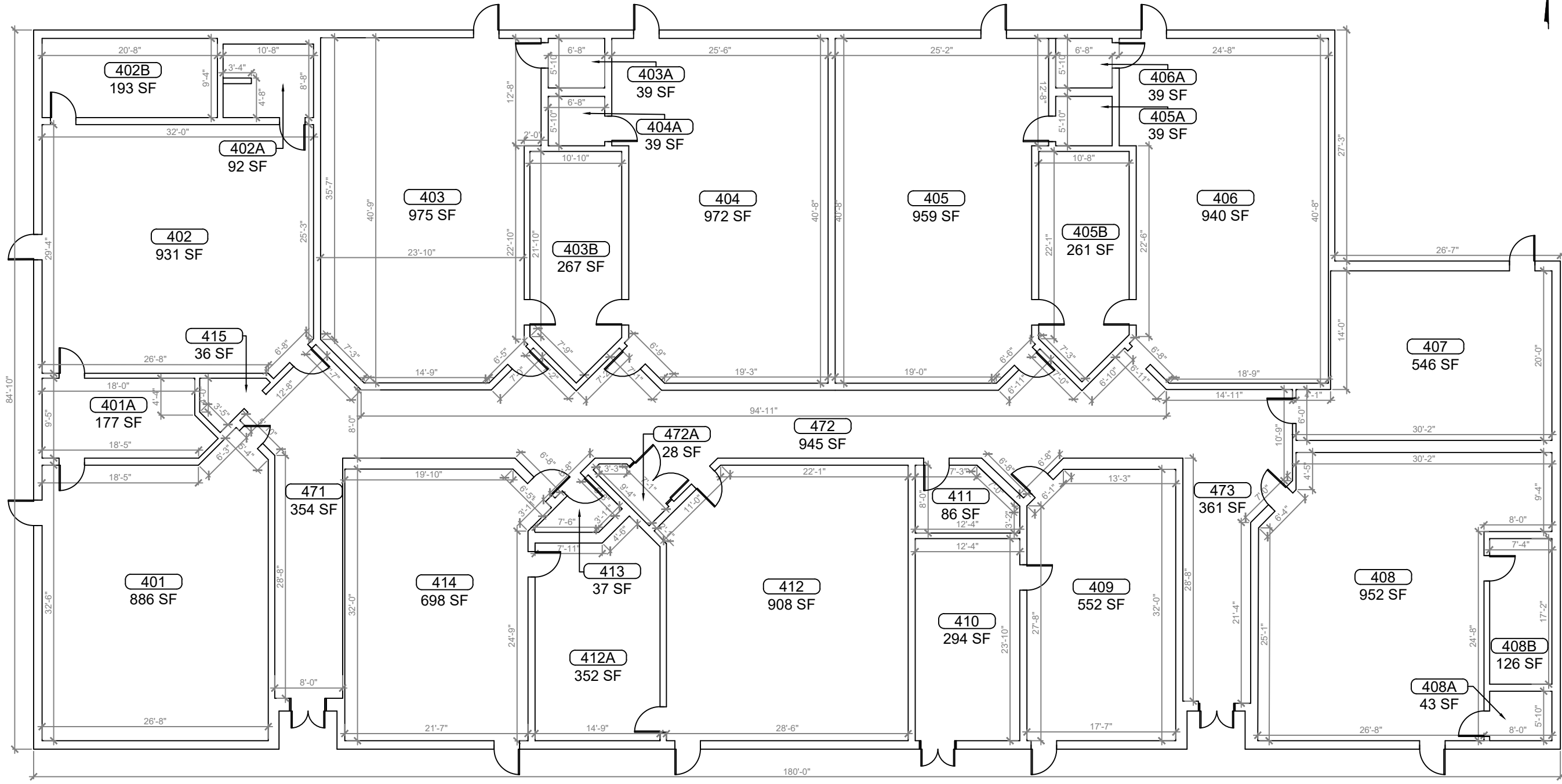
Astatula Elementary School
(FISH PLAN)
13925 Florida Ave,
Astatula, FL

SHEET DESCRIPTION
BUILDING 03

SHEET NUMBER
B-03

ARCHIS TECHNOLOGIES - \\server-1\H\Archis\21-008 Astatula ES\From ISP\03-02-2021\896_Lake County Fish Survey_Astatula ES.dwg February 3, 2021 10:29:58 PC20

ARCHIS TECHNOLOGIES - \\server-1\H\Archis\21-008 Astatula ES\From ISP\03-02-2021\896_Lake County Fish Survey_Astatula ES.dwg February 3, 2021 10:30:03 PC20



REV	DATE	DESCRIPTION
A	02/03/21	PRELIMINARY FISH PLAN
B		
0		
1		
2		
3		
4		
5		
6		

ARCHIS PROJECT NO.:
 DRAWN BY: CB
 CHECKED BY: SH



CMI
 158 Terra Mango Loop, Suite B,
 Orlando, FL 32835
 Main: (407) 293-4168

PREPARED BY:
ARCHIS
 350 E. Crown Point Road, Suite 1100
 Winter Garden, FL 34787
 Main: 888.324.2557
 Direct: 407.439.1594

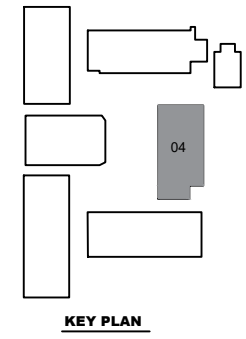
DATE
 , PE
 FL PROFESSIONAL ENGINEER LIC. #

Astatula Elementary School
(FISH PLAN)
 13925 Florida Ave,
 Astatula, FL

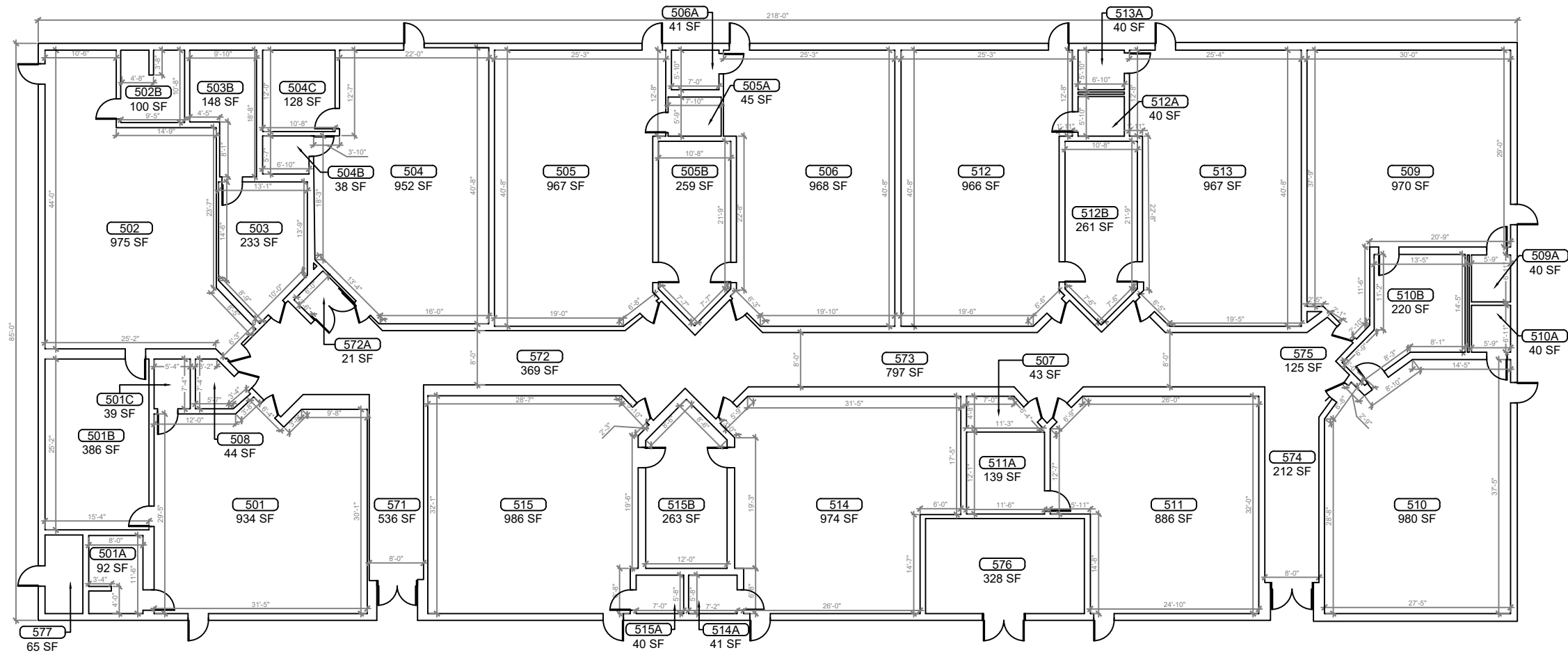
SHEET DESCRIPTION
BUILDING 04

SHEET NUMBER
B-04

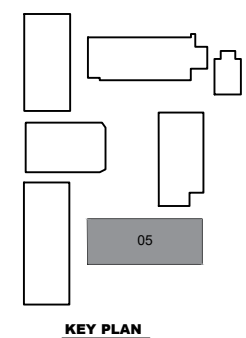
1 BUILDING 04 FLOOR PLAN
 SCALE: 3/16"=1'-0"



ARCHIS TECHNOLOGIES - \\server-1\H\Archis\21-008 Astatula ES\From ISP\03-02-2021\896_Lake County Fish Survey_Astatula ES.dwg February 3, 2021 10:30:08 PC20



1 BUILDING 05 FLOOR PLAN
 B-05 SCALE: 1/8"=1'-0"



REV	DATE	DESCRIPTION
A	02/03/21	PRELIMINARY FISH PLAN
B		
0		
1		
2		
3		
4		
5		
6		

ARCHIS PROJECT NO.:
 DRAWN BY: CB CHECKED BY: SH



CMI
 158 Terra Mango Loop, Suite B,
 Orlando, FL 32835
 Main: (407) 293-4168

PREPARED BY:
ARCHIS
 350 E. Crown Point Road, Suite 1100
 Winter Garden, FL 34787
 Main: 888.324.2557
 Direct: 407.439.1594

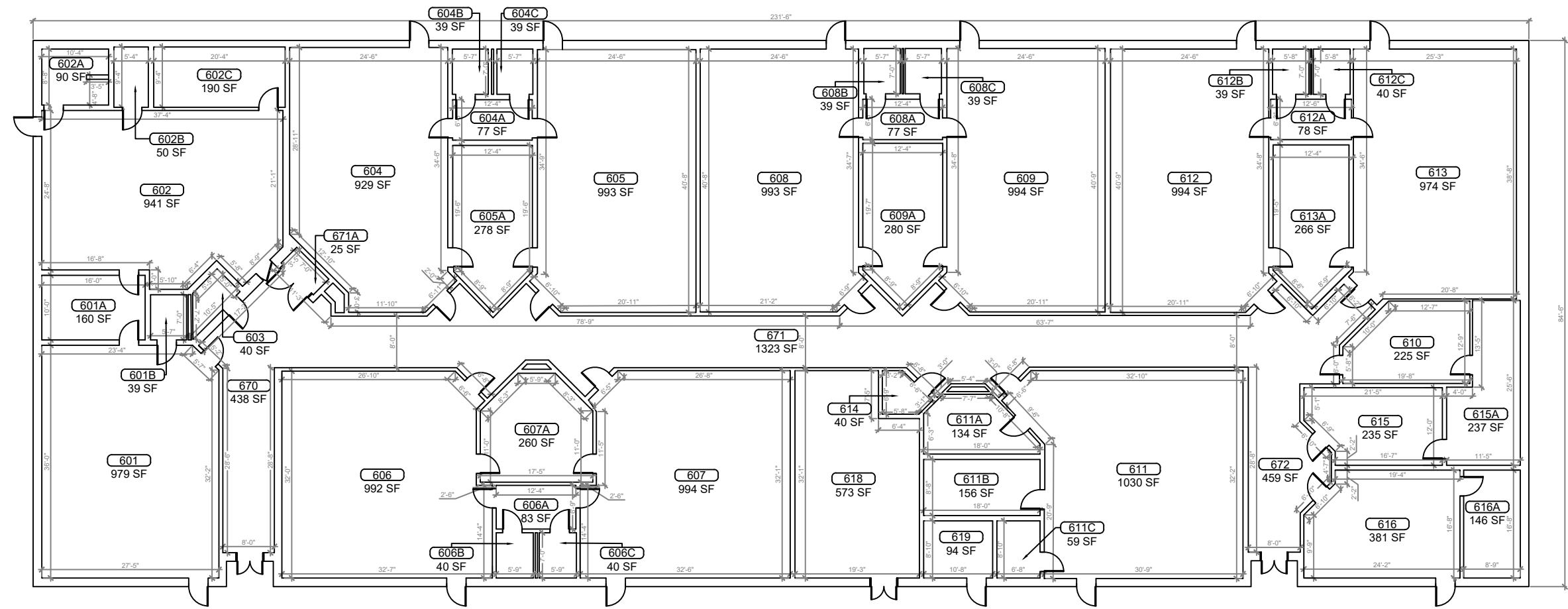
DATE
 , PE
 FL PROFESSIONAL ENGINEER LIC. #

Astatula Elementary School
(FISH PLAN)
 13925 Florida Ave,
 Astatula, FL

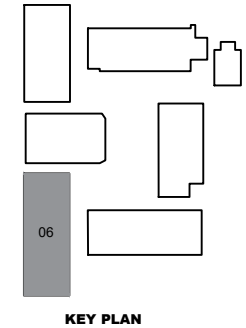
SHEET DESCRIPTION
BUILDING 05

SHEET NUMBER
B-05

ARCHIS TECHNOLOGIES - \\server-1\H\Archis\21-008 Astatula ES\From ISP\03-02-2021\896_Lake County Fish Survey_Astatula ES.dwg February 3, 2021 10:30:13 PC20



1 BUILDING 06 FLOOR PLAN
 SCALE: 1/8"=1'-0"



REV	DATE	DESCRIPTION
A	02/03/21	PRELIMINARY FISH PLAN
B		
0		
1		
2		
3		
4		
5		
6		

ARCHIS PROJECT NO.:
 DRAWN BY: CB
 CHECKED BY: SH



CMI
 158 Terra Mango Loop, Suite B,
 Orlando, FL 32835
 Main: (407) 293-4168

PREPARED BY:
ARCHIS
 350 E. Crown Point Road, Suite 1100
 Winter Garden, FL 34787
 Main: 888.324.2557
 Direct: 407.439.1594

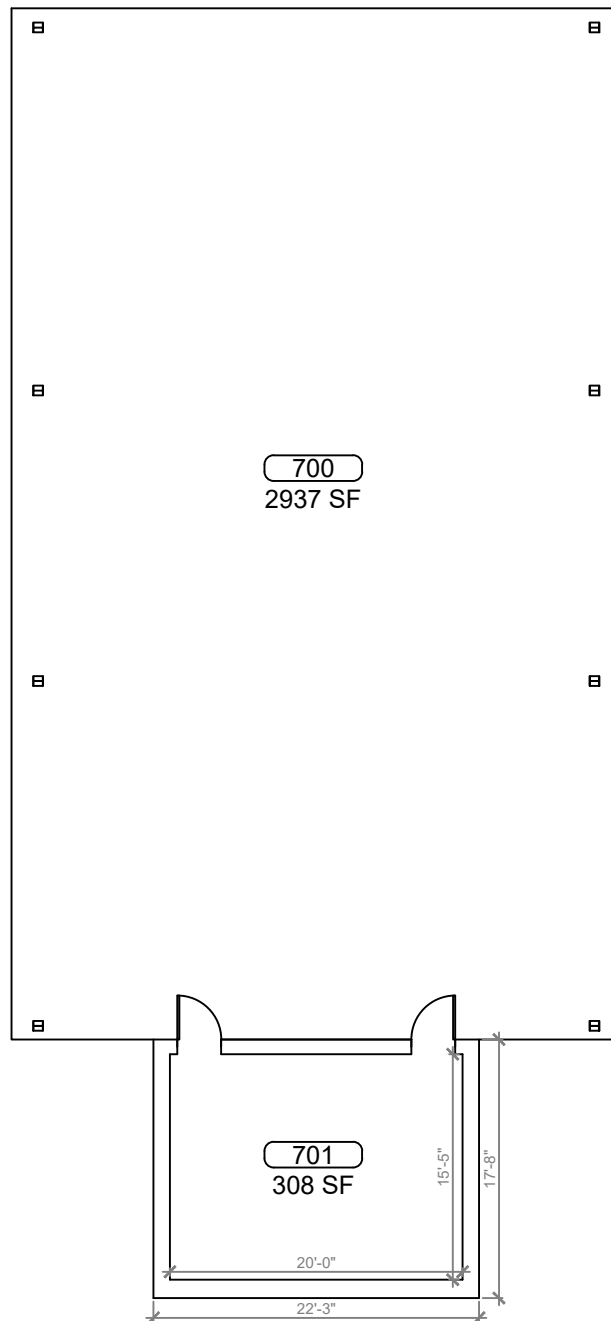
DATE
 , PE
 FL PROFESSIONAL ENGINEER LIC. #

Astatula Elementary School
(FISH PLAN)
 13925 Florida Ave,
 Astatula, FL

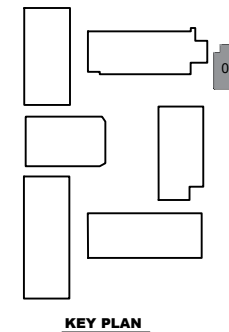
SHEET DESCRIPTION
BUILDING 06

SHEET NUMBER
B-06

ARCHIS TECHNOLOGIES - \\server-1\H\Archis\21-008 Astatula ES\From ISP\03-02-2021\896_Lake County Fish Survey_Astatula ES.dwg February 3, 2021 10:30:18 PC20

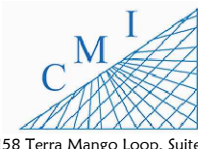


BUILDING 07 FLOOR PLAN
SCALE: 3/16"=1'-0"



REV	DATE	DESCRIPTION
A	02/03/21	PRELIMINARY FISH PLAN
B		
0		
1		
2		
3		
4		
5		
6		

ARCHIS PROJECT NO.:
DRAWN BY: CB CHECKED BY: SH



158 Terra Mango Loop, Suite B,
Orlando, FL 32835
Main: (407) 293-4168

PREPARED BY:
ARCHIS
350 E. Crown Point Road, Suite 1100
Winter Garden, FL 34787
Main: 888.324.2557
Direct: 407.439.1594

DATE
, PE
FL PROFESSIONAL ENGINEER LIC. #

Astatula Elementary School
(FISH PLAN)
13925 Florida Ave,
Astatula, FL

SHEET DESCRIPTION
BUILDING 07

SHEET NUMBER
B-07