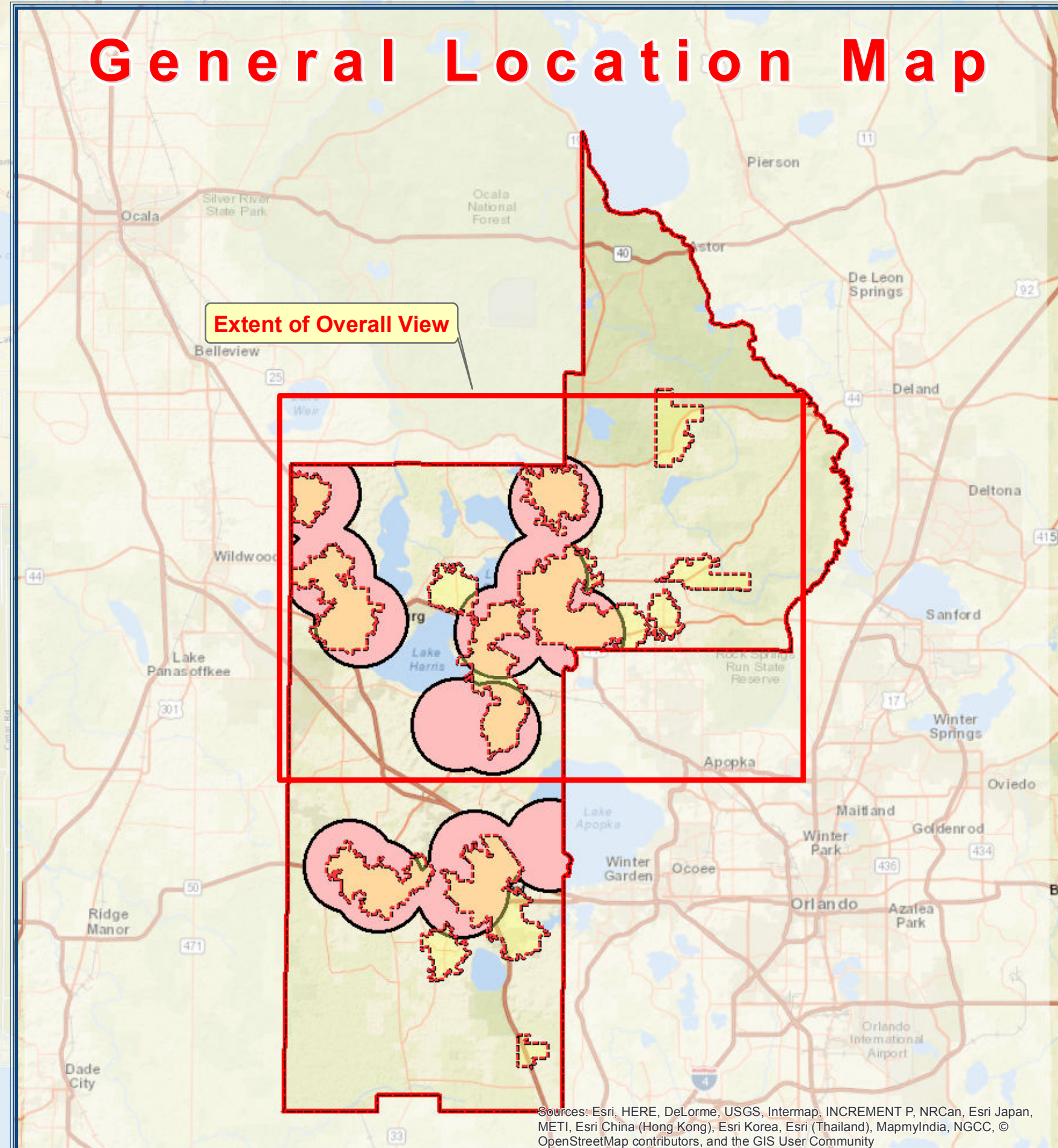
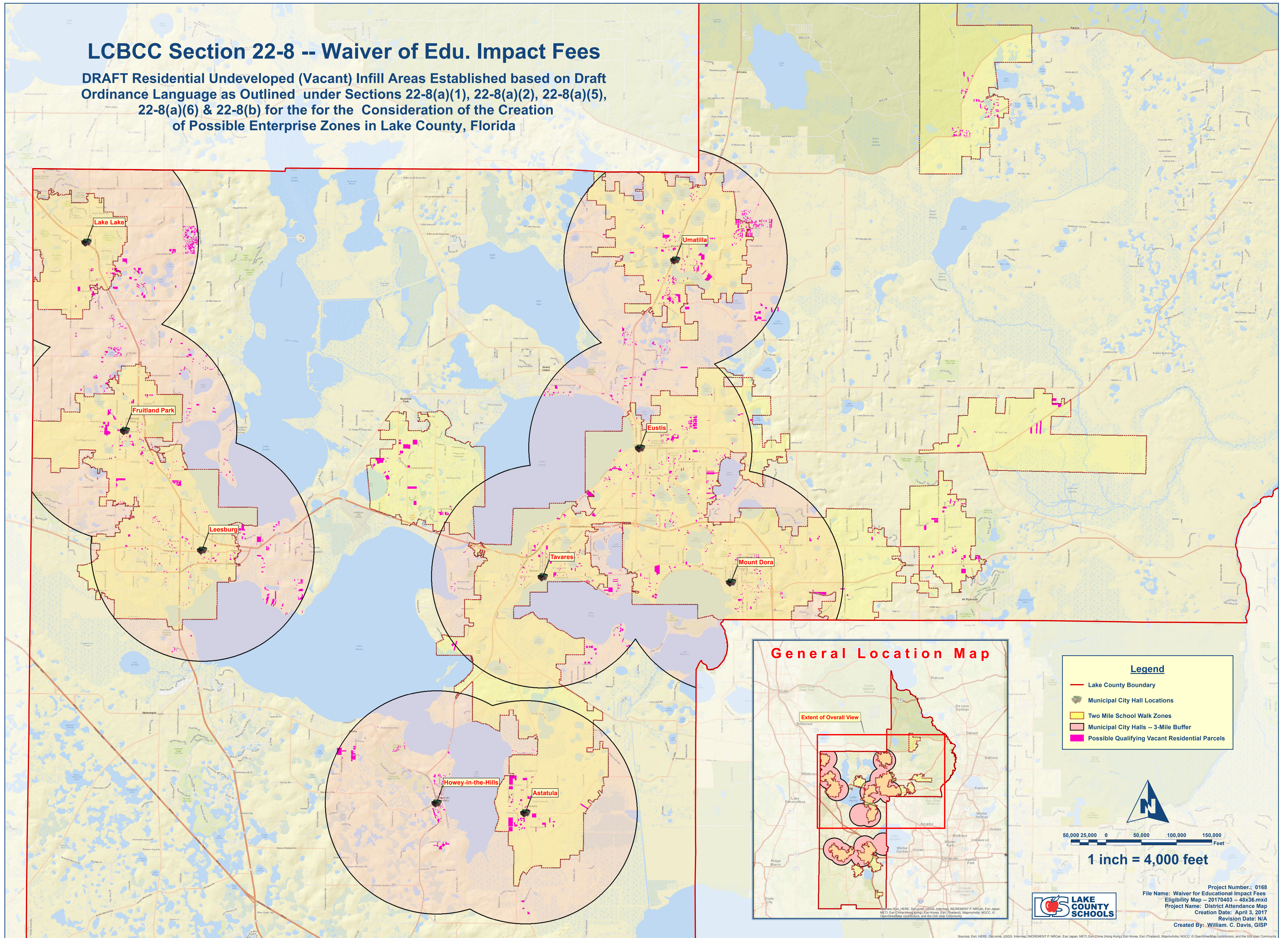
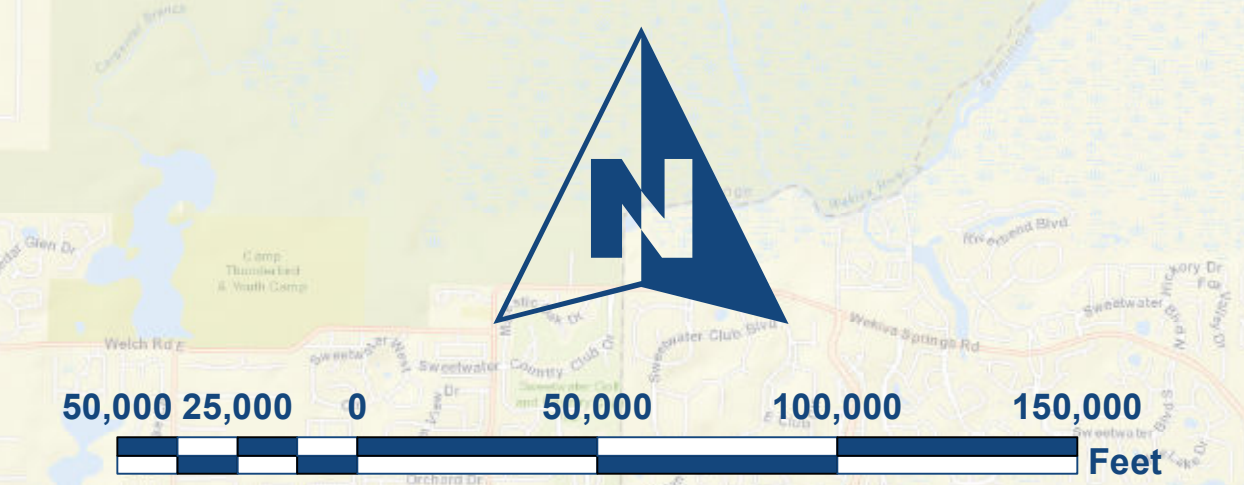


LCBCC Section 22-8 -- Waiver of Edu. Impact Fees

DRAFT Residential Undeveloped (Vacant) Infill Areas Established based on Draft Ordinance Language as Outlined under Sections 22-8(a)(1), 22-8(a)(2), 22-8(a)(5), 22-8(a)(6) & 22-8(b) for the for the Consideration of the Creation of Possible Enterprise Zones in Lake County, Florida



- #### Legend
- Lake County Boundary
 - Municipal City Hall Locations
 - Two Mile School Walk Zones
 - Municipal City Halls -- 3-Mile Buffer
 - Possible Qualifying Vacant Residential Parcels



Project Number: 0168
File Name: Waiver for Educational Impact Fees
Eligibility Map -- 20170403 -- 48x36.mxd
Project Name: District Attendance Map
Creation Date: April 3, 2017
Revision Date: N/A
Created By: William C. Davis, GISP



Sources: Esri, HERE, DeLorme, USGS, Intermap, INCREMENT P, NRCan, Esri Japan, METI, Esri China (Hong Kong), Esri Korea, Esri (Thailand), Mapbox, NGCC, © OpenStreetMap contributors, and the GIS User Community