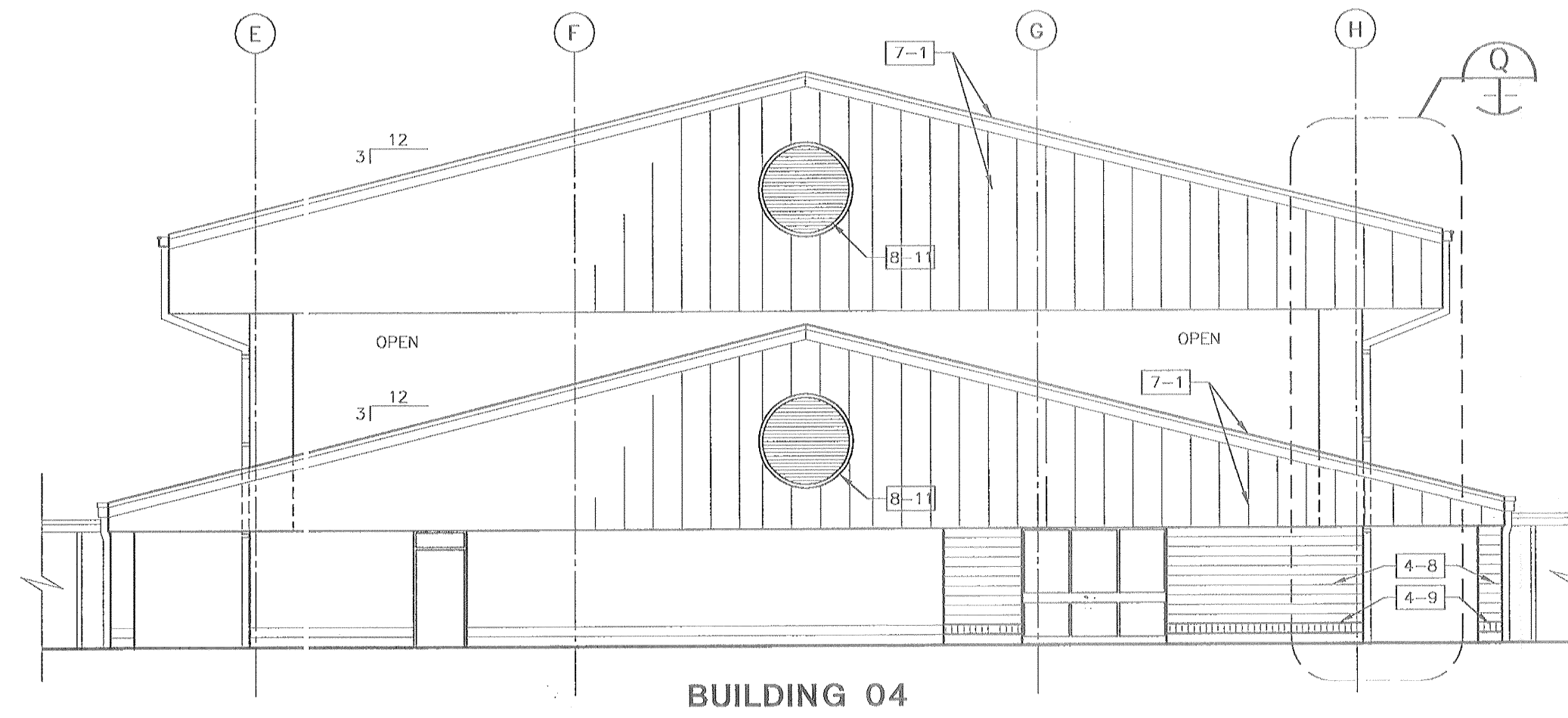
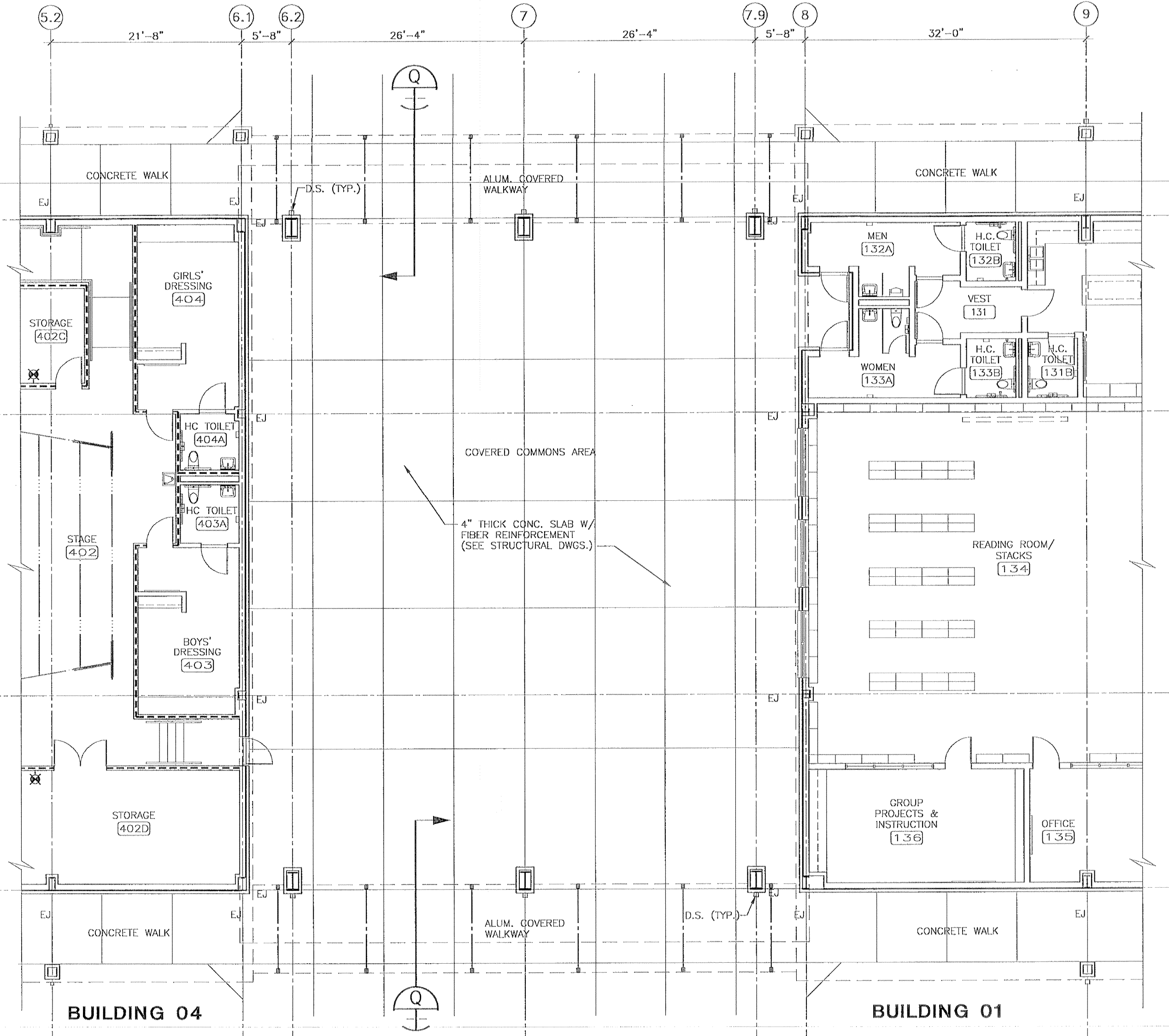


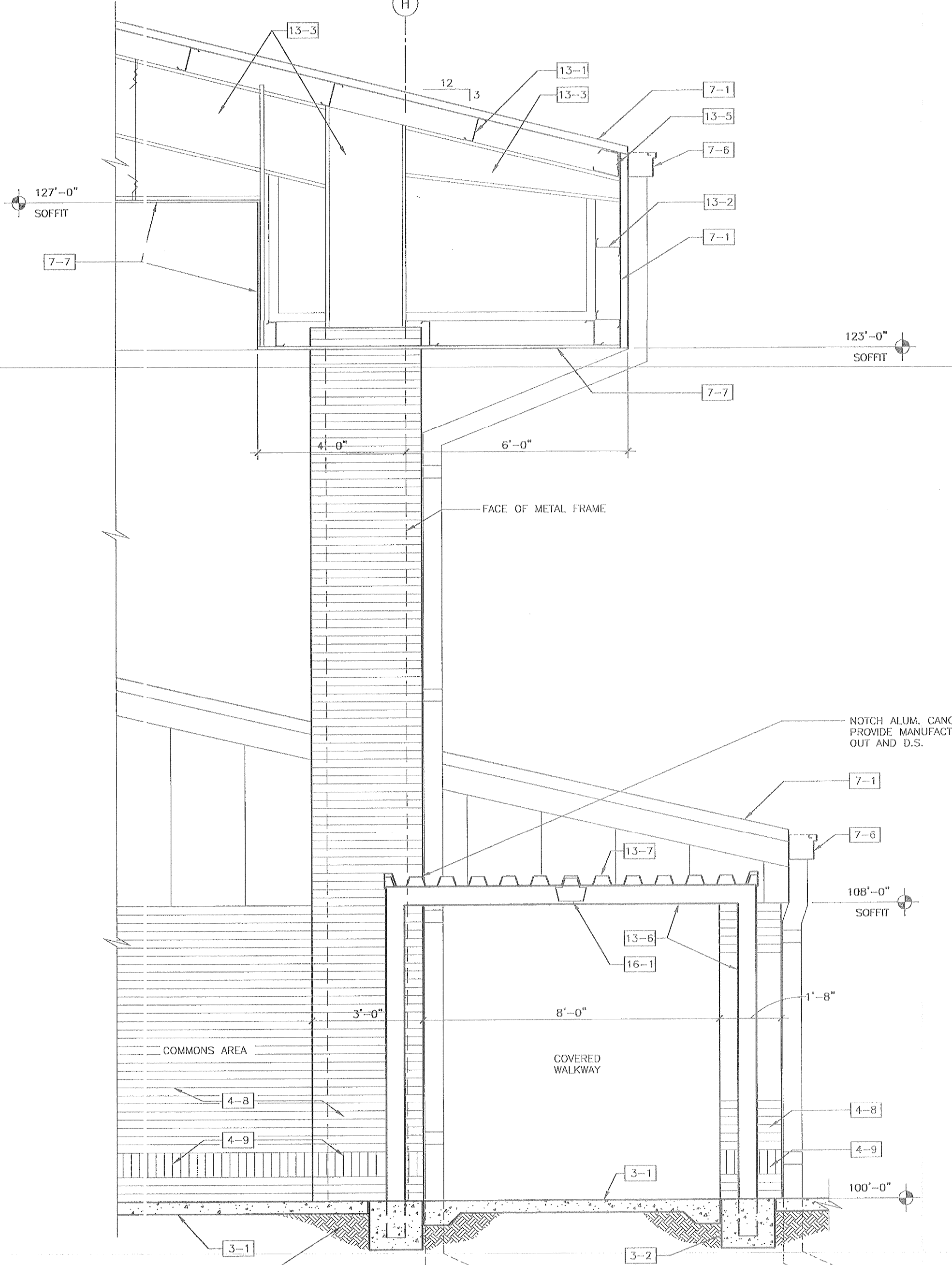
**ELEVATION**  
1/8"=1'-0"



**ELEVATION**  
1/8"=1'-0"

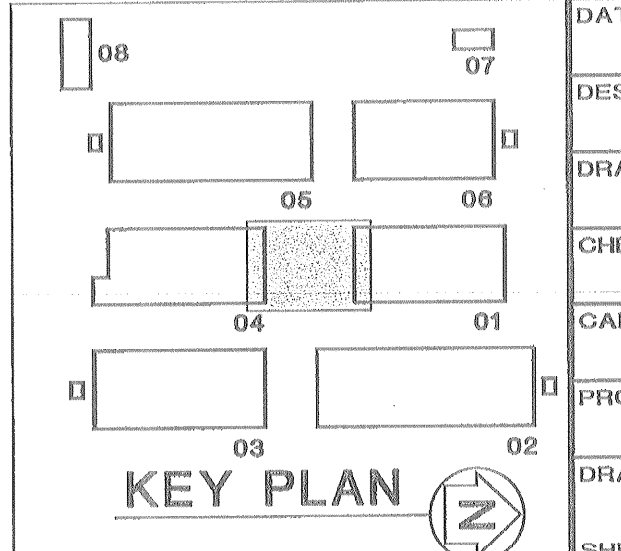
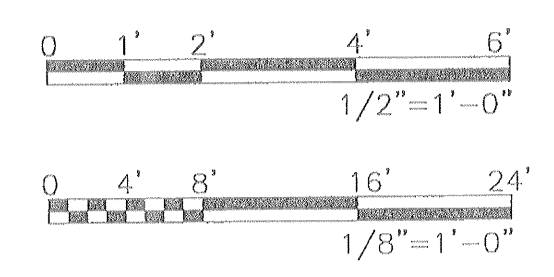


**COMMONS AREA PLAN**  
1/8"=1'-0"



**SECTION**  
1/2"=1'-0"

- NOTES:**
- 2-1 COMPACTED FILL.
  - 2-2 FINISHED GRADE.
  - 3-1 CONCRETE SLAB. SEE STRUCTURAL.
  - 3-2 CONCRETE FOOTING. SEE STRUCTURAL.
  - 3-3 CONCRETE SLAB ON DECK. SEE STRUCTURAL.
  - 3-4 CONCRETE BEAM. SEE STRUCTURAL.
  - 3-5 BOND BEAM. SEE STRUCTURAL.
  - 3-6 VAPOR BARRIER.
  - 3-7 REINFORCING. SEE STRUCTURAL.
  - 4-1 8" CMU.
  - 4-2 6" CMU.
  - 4-3 12"x12" PILASTER COLUMN.
  - 4-4 GROUT FILL.
  - 4-5 MORTAR STOP.
  - 4-6 HORIZONTAL JOINT REINFORCING.
  - 4-7 PRECAST LINTEL. SEE STRUCTURAL.
  - 4-8 BRICK VENEER.
  - 4-9 BRICK ACCENT SOLDIER COURSE.
  - 4-10 BRICK ROWLOCK SILL.
  - 4-11 BRICK SOLDIER CAP.
  - 4-12 EXPANSION JOINT.
  - 4-13 MORTAR.
  - 4-14 6" OR 8" CMU (SEE PLAN).
  - 4-15 NON-SHRINKING GROUT FILL, SLOPE TOP.
  - 7-1 METAL ROOFING AND SIDING.
  - 7-2 CONTINUOUS RIDGE.
  - 7-3 WALL FLASHING.
  - 7-4 SEALANT CONTINUOUS.
  - 7-5 DAMPROOFING.
  - 7-6 METAL GUTTER & 6"x6" DOWNSPOUT SYSTEM, 22 GA STEEL - FACTORY FINISH, SUPPORT GUTTERS W/ 18 GA STEEL & 1" WIDE STRIPS @ 6'-0" O.C. AND 1/2" X 1" GUTTER "U" BRACKETS @ 3'-0" O.C.
  - 7-7 1" METAL SOFFIT (PERFORATED) ATTACHED TO PURLINS.
  - 7-8 1" METAL SOFFIT ATTACHED TO 2'S @ 24" O.C.
  - 7-9 1" RIDGED INSULATION.
  - 7-10 CAP FLASHING.
  - 7-11 WEEPS @ 24" O.C.
  - 7-12 R-19 INSULATION W/ VINYL FACING - SEE SPECS.
  - 7-13 R-11 BATT INSULATION.
  - 7-14 BACKER ROD.
  - 7-15 EAVE TRIM.
  - 7-16 CLOSURE SET IN SEALANT.
  - 8-9 GALVANIZED HOLLOW METAL TRANSOM PANEL OR LOUVER. SEE SCHEDULE.
  - 8-10 MARBLE THRESHOLD.
  - 8-11 6" DEEP x 72" LOUVER & BIRD SCREEN WITH BRICK SOLDIER SURROUND. PROVIDE 22 GA. DRIP PAN 1/2" DEEP x 12" DEEP FOR LOUVERS NOT CONNECTED TO EXHAUST DUCTS OR BLANKED OUT.
  - 13-1 PURLIN.
  - 13-2 GIRT.
  - 13-3 PRE-ENGINEERED FRAMING MEMBER.
  - 13-4 INSULATION WITH VINYL FACING. (SEE SPECS.)
  - 13-5 EAVE STRUT CONTINUOUS.
  - 13-6 4"x6" ALUMINUM BENT.
  - 13-7 ALUMINUM DECK.
  - 15-1 EXHAUST DUCT CONNECTION. SEE MECHANICAL DRAWINGS FOR SIZES.
  - 15-2 DOWNSPOUT RECEPTOR.
  - 16-1 LIGHT FIXTURE. SEE ELECTRICAL.



**BRPH ARCHITECTS ENGINEERS, INC.**  
MELBOURNE/ORLANDO/PALM BEACH GARDENS  
3276 SUNTREE BOULEVARD  
MELBOURNE, FLORIDA 32840  
License No. AA 000048  
Copyright © 1999

**ELEMENTARY "E" - UMATILLA**  
UMATILLA, FLORIDA  
SCHOOL BOARD OF LAKE COUNTY  
COV. COMMONS AREA (ADD ALT. NO.1)

**RECORD DRAWING**

DATE: 8-19-99  
DESIGNED BY: KELLEY  
DRAWN BY: KYLE  
CHECKED BY:  
CAD CODE: 3980.01\A23  
PROJECT NO.: 3980.01  
DRAWING NO.: A-23  
SHEET OF

I:\3980.01\CURRENT\A23.DWG 08-28-99 13:14 LUM