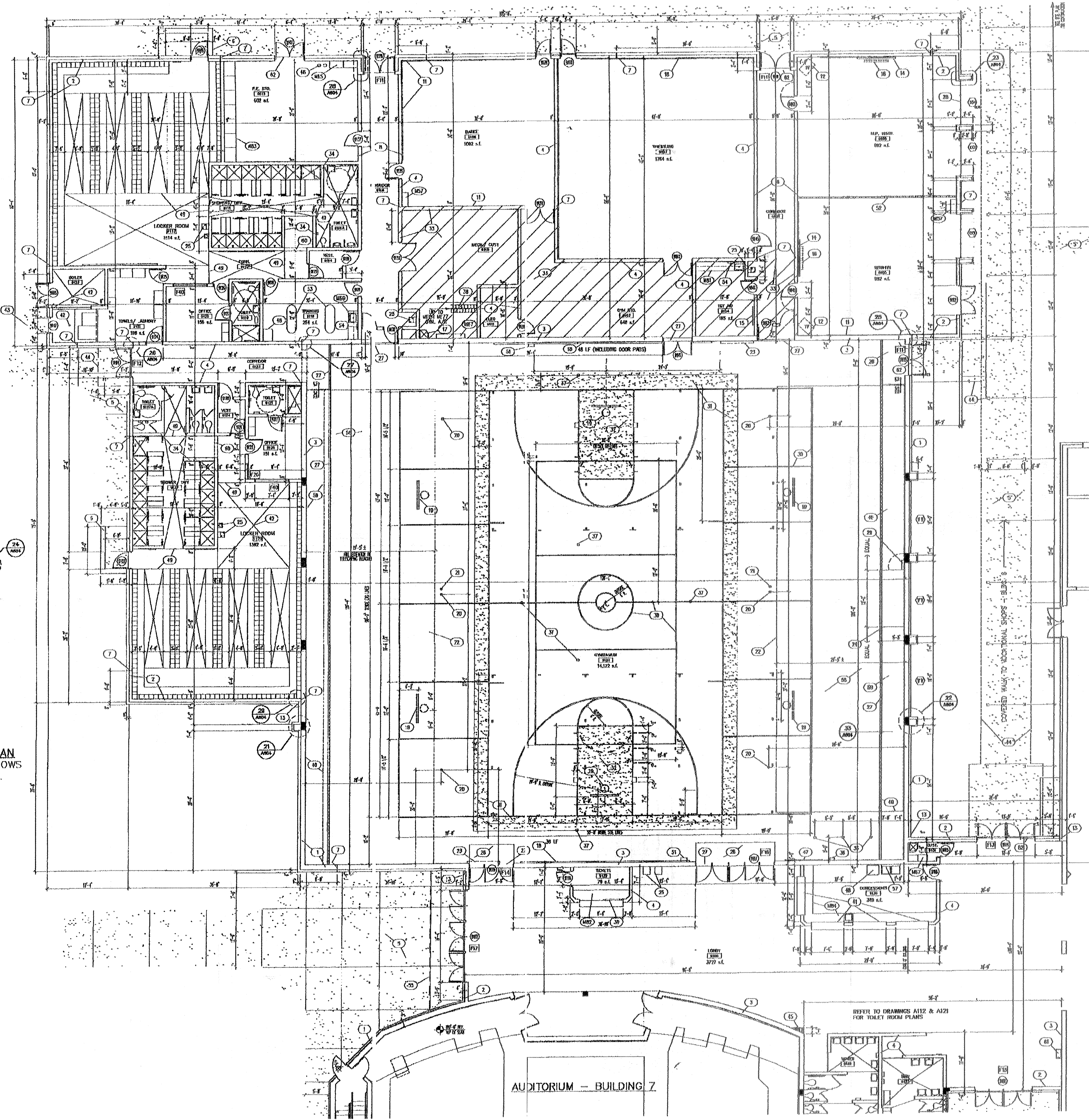


SLH

South CM  
C92

PARTIAL PLAN  
UPPER WINDOWS  
NORTH WALL  
1/8" = 1'-0"

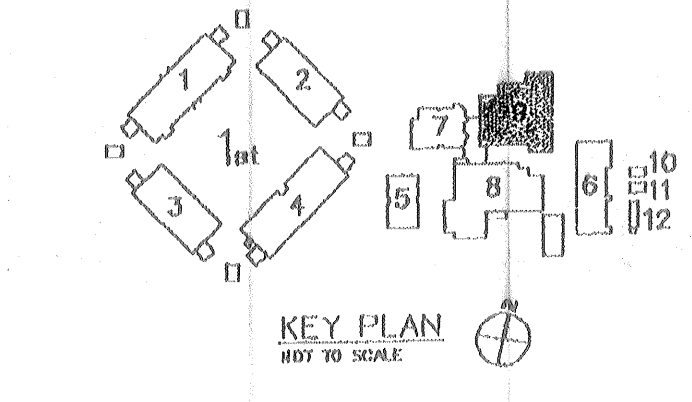


- DRAWING NOTES - APPLICABLE TO THIS SHEET ONLY
1. Typical exterior wall: 12x16 concrete masonry units w/ 2" rigid insulation in a 2" cavity and nominal 4" brick face. Total wall thickness 1'-0". See Details for location of grouted & reinforced vertical cells, horizontal joint reinforcing and brick flow. See also Structural Drawings (SD).
  2. Exterior masonry wall: 8x16 concrete masonry units w/ nominal 4" brick face w/ 2" rigid insulation in a 2" cavity. Total wall thickness 1'-2". See Details same as Note 1 (above).
  3. Interior masonry wall: 12x16 concrete masonry units. Provide grouted & reinforced vertical cells in accordance with Structural Plans. In addition, provide corner @ all corners, intersections, wall terminations, jamb openings and as indicated on Wall Sections/Details.
  4. Typical interior wall: 8x16 concrete masonry units. Provide grouted vertical cells reinforced w/ 1-#4 continuous @ 4'-0" oc, end of all corners, intersections, and terminations. Jamb openings and as indicated on Wall Section/Details.
  5. Concrete walls: 4" thick floor reinforced w/ indicated edges as detailed. Provide expansion joints @ 20'-0" oc and control joints @ 5'-0" oc. TYP.
  6. Memory screen wall: 4" concrete masonry backing, 4" brick veneer and 4" insulat cap. Top of wall to 7'-0" AFF.
  7. Through wall control joint. Cast both sides. See SD.
  8. Use floor for protected barrier.
  9. -NOT USED-
  10. -NOT USED-
  11. Mirrors: Install mirrors full length of wall from 0" AFF to top of 6'-0" AFF. Continuous stretch bar.
  12. TV bracket by contractor/TV by owner (TYP).
  13. Cast-in-place control joint. Use brick veneer only. TYP @ interior corners.
  14. See SD / 4th fl.
  15. See SD.
  16. AV screen: Wall mounted, manual.
  17. Map locker: w/ accessories.
  18. Wall note: Install padded seats 6'-0" high x length shown across wall. Top of 6'-4" AFF. Pads for doors included in length.
  19. Handrail: steel.
  20. Floor outlet: 110V.
  21. Microphone jack to floor.
  22. Bleachers: Line indicates minimum extension.
  23. Stanchion.
  24. Crown rest platform above bleachers.
  25. Water cooler.
  26. Capset over hardwood floor.
  27. Expansion joint cover.
  28. Emergency escape: steel.
  29. Ladder to Crown Rest.
  30. Indicated painted grade line (only varying center).
  31. Indicated painted grade: operate from grade line by 1'-1".
  32. Paint finish free from areas wall color is selected.
  33. Limit of masonry: Hatch indicates floor above.
  34. Vertical height 8" masonry wall to 7'-4" AFF.
  35. Climbing rope: (3) required. Suspend from double track to lock 4"x4"x3/4" steel ender bolted to roof beams. Verify location with Architect.
  36. Climbing rope hole: Wall clear @ 48" AFF. Pushy on wall above. Verify location, 3 ropes.
  37. Floor above with cover. Verify exact locations with Architect.
  38. Ladder to mezzanine.
  39. Fixed glass in aluminum frame, with U-bolt slots and spack paste.
  40. Bleachers, stacked position. Verify 5'-10".
  41. Counter: Steel.
  42. Floor drain: See Plumbing Drawings. Slope floor down to drain as indicated.
  43. As note #5 (above) except delete thickened edge.
  44. Fabricated aluminum millwork cover.
  45. Block out corner with concrete masonry to a minimum of 4" above highest adjacent ceiling.
  46. Insulated chilled water supply and return piping up from slab to mezzanine. See Mechanical Drawings.
  47. 4x8 HL.
  48. Ice machine (M.I.C.).
  49. Cast-in-place joint in the floor. See DWG A116 for other joints in requirement.
  50. -NOT USED-
  51. Steel deck.
  52. Demountable unit.
  53. Whirlpool tubs.
  54. Paper towel & soap dispenser, TYP. @ all lavs and urinals.
  55. Frame finish out with metal slats.
  56. Floor below.
  57. Sink double compartment.
  58. Hardwood gymnasium floor.
  59. Sealed concrete finish with -25- for stacking bleachers.
  60. Memory Wall, 6'-0" AFF.
  61. Telephone booth.
  62. Aluminum threshold set in caulking, typ.

- KEY TO WALL TYPES  
(APPLY TO ALL FLOOR PLANS UNLESS NOTED)
- INDICATES MASONRY WALLS TO RECEIVE FOAMED IN PLACE INSULATION FULL HEIGHT.
  - INDICATES WALL FRAMED WITH 2x4/2x6 W/ STUDS AT 16" O.C. TO UNDERSIDE OF DECK ABOVE. FINISH W/ 5/8" GYP. BOARD OVER CHIEF (FIBER) INSULATE WITH FIBERGLASS BATT INSULATION FULL EXTENTS OF PARTITION.
  - INDICATES CONCRETE MASONRY WALLS.

BUILDING 9  
FLOOR PLAN -  
GYMNASIUM  
1/8" = 1'-0"

REFER TO DRAWINGS A116 FOR ENLARGED LOCKER ROOMS  
DRAWING A117 FOR MEZZANINE PLAN



SWILLEY CURTIS MUNDY HUNNICUTT ASSOCIATES ARCHITECTS INC.  
CLERMONT, FLORIDA

PHASE I/II: CONSTRUCTION DOCUMENTS  
HIGH SCHOOL 'AAA'  
THE SCHOOL BOARD OF LAKE COUNTY, FLORIDA  
BUILDING 9 - FLOOR PLAN - GYMNASIUM

REVISION 2	
REVISION 1	
CORR. STRUCTURE	12/08/00
APPROVAL	12/08/00
REVIEW	
DESIGNED BY	
DRAWN BY	CVM 6/00
<b>A115</b>	
0010	