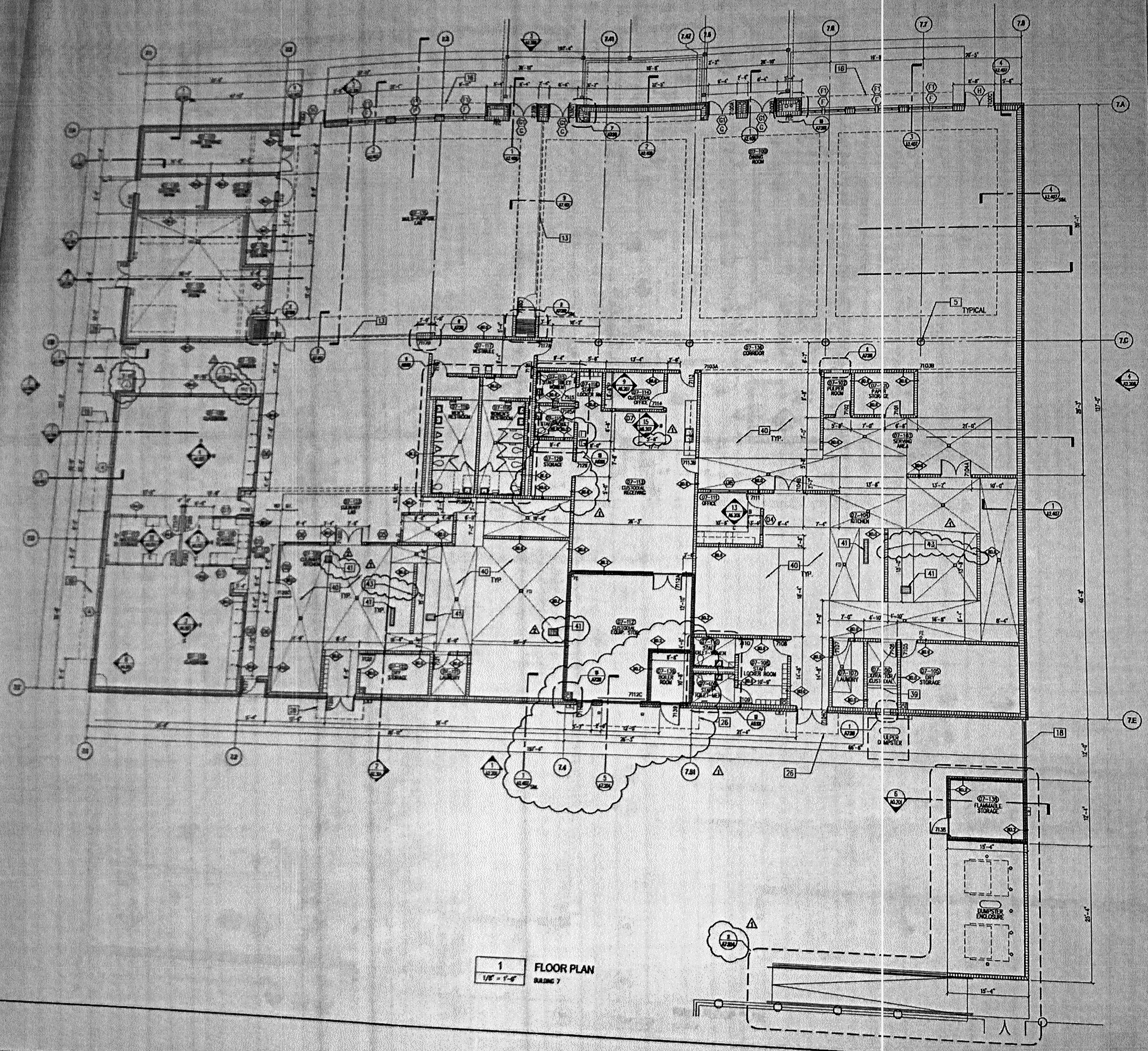
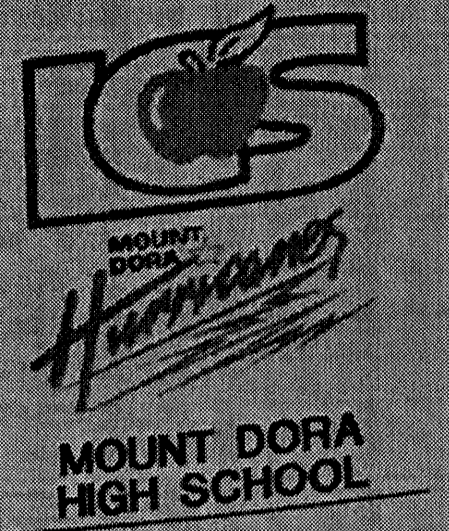


BOARD MEMBERS
JIMMY CONNER, DISTRICT 4 - CHAIRPERSON
KYLEEN FISCHER, DISTRICT 5 - VICE CHAIR



- KEYNOTES**
1. DYPSON WALLBOARD ON METAL STUD FRAMING
 2. CONCRETE MASONRY UNIT (CMU) WALL
 3. BRICK VENEER
 4. ALUMINUM WINDOWS
 5. CONCRETE COLUMN
 6. GLAZED CURTAIN WALL SYSTEM
 7. STEEL COLUMN
 8. PRE CAST SLAB
 9. FIRE EXTINGUISHER
 10. FIRE EXTINGUISHER CABINET
 11. ELEVATOR
 12. ALUMINUM COLUMN
 13. OPERABLE PARTITION
 14. CATWALK (ARROWS)
 15. ELEVATED WALKWAY
 16. SHAVING DEVICE
 17. METAL LOCKER
 18. METAL FENCE AND GATE
 19. FIRE CURTAIN
 20. SMOKE VENT
 21. ROOF ACCESS LADDER
 22. REMOVE (E) PORTION OF CONCRETE WALL TO ALLOW THE INSTALLATION OF DOOR & FRAME
 23. EXISTING BUILDING TO REMAIN
 24. PAINTED CONCRETE
 25. NOT USED
 26. CANOPY STRUCTURE
 27. 4" CONCRETE BASE AT LOCKERS
 28. EXPANSION JOINT WITH COVER ASSEMBLY
 29. ARCHITECTURAL PRECAST CONC. CAP
 30. GUARDRAIL ASSEMBLY
 31. LINE OF CONC. BEAM ABOVE
 32. LINE OF CANOPY ABOVE
 33. CHAIN LINK FENCE
 34. NOT USED
 35. BASKETBALL BACKSTOPS
 36. 6" DIA. BOLLARD
 37. FLAGPOLE
 38. VERTICAL HEIGHT CHASE IN EXPANDED COLUMN
 39. 4" WIDE x 6" HIGH CURB. SEE FOOD SERVICE DRAWINGS.
 40. REFER TO FOOD SERVICE DRWG. FOR EQUIPMENT THIS AREA.
 41. FLOOR THROUGH
 42. BOMB-Security SYSTEM
 43. TOP OF CMU WALL AT 2' A.F.F. SEE FOOD SERVICE DRAWINGS.
 44. STRUCTURE ABOVE FINISH CEILING

- GENERAL NOTES**
1. SEE SHEETS A8.201 - A8.208 FOR INTERIOR ELEVATIONS.
 2. ASSUMED FINISH FLOOR ELEVATION: 0'-0" FOR GROUND FLOOR AND 1'-0" FOR SECOND FLOOR (IF APPLIED) COORDINATE ACTUAL FINISH FLOOR WITH CIVIL DRAWINGS.
 3. UNLESS NOTED OTHERWISE, INTERIOR PARTITION TYPES SHALL BE 80.0. REFER TO M.101 FOR INTERIOR PARTITION SCHEDULE.



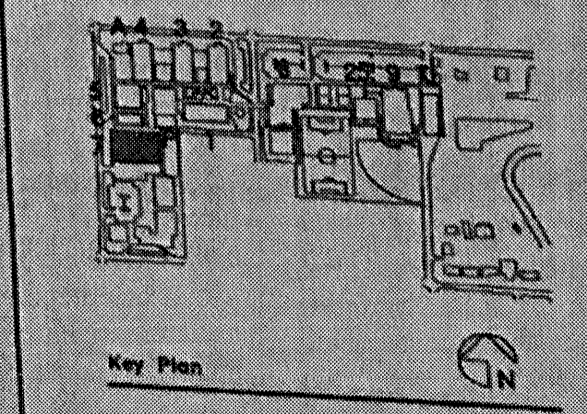
MOUNT DORA HIGH SCHOOL
 Owner:
 Lake County Schools
 201 West Burtleigh Boulevard
 Tavares, Florida 32779

Architect:
C.T. HSU & ASSOCIATES, P.A.
 820 Irma Avenue, Orlando, FL 32803
 Tel 407.423.0088 Fax 407.423.4793

NOTICE
 The data in this document represents proprietary rights of C. T. HSU & ASSOCIATES, 820 Irma Avenue, Orlando, Florida 32803. Any party receiving this document does so in confidence and agrees that it shall not be duplicated in whole or in part nor disclosed to others, without the written consent of C. T. HSU & ASSOCIATES.

Revisions

08/27/03	ASI #001
08/14/03	ADD. NO. 4
07/30/03	100% CD



BUILDING - 7 FLOOR PLAN

Sheet Title

Job No. 0205.00
 Date 07/30/03
 Scale 1/8" = 1'-0"
 File A1107

A1.107
 Sheet No.

To the best of my knowledge, these drawings and the project manual are complete and comply with the State Requirements for Educational Facilities.

To the best of my knowledge, these drawings and the project manual are complete and comply with the State Requirements for Educational Facilities.