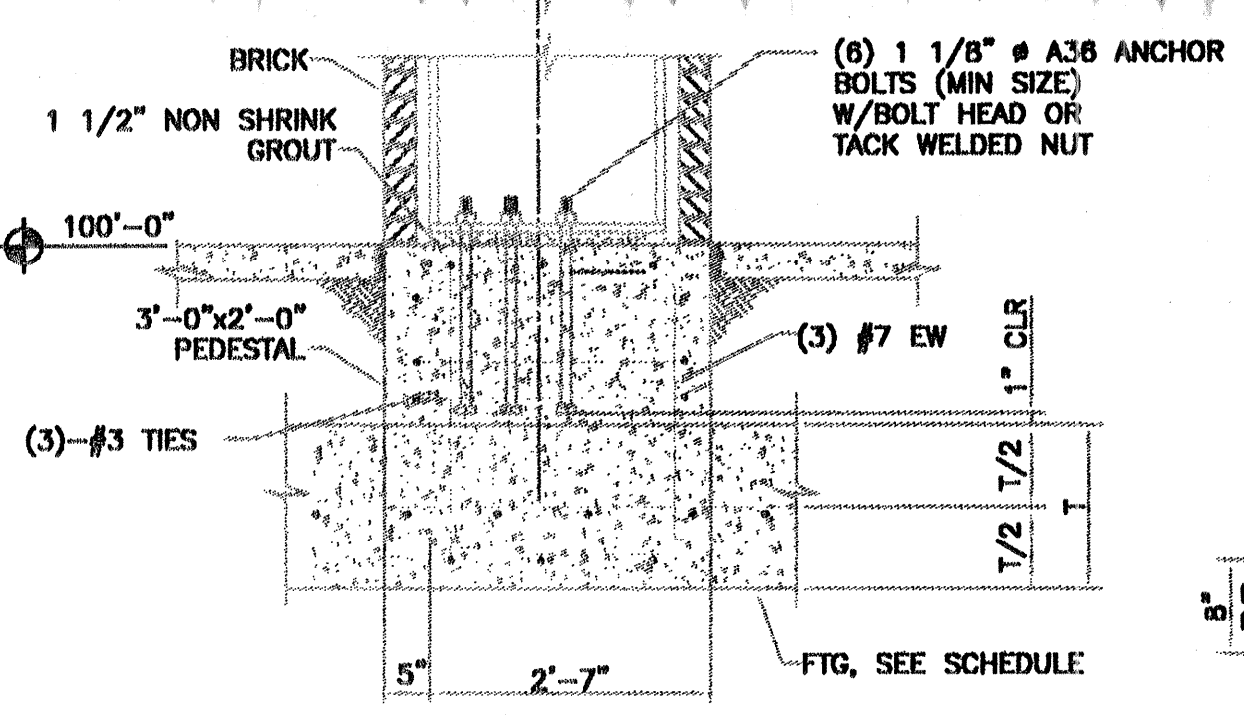
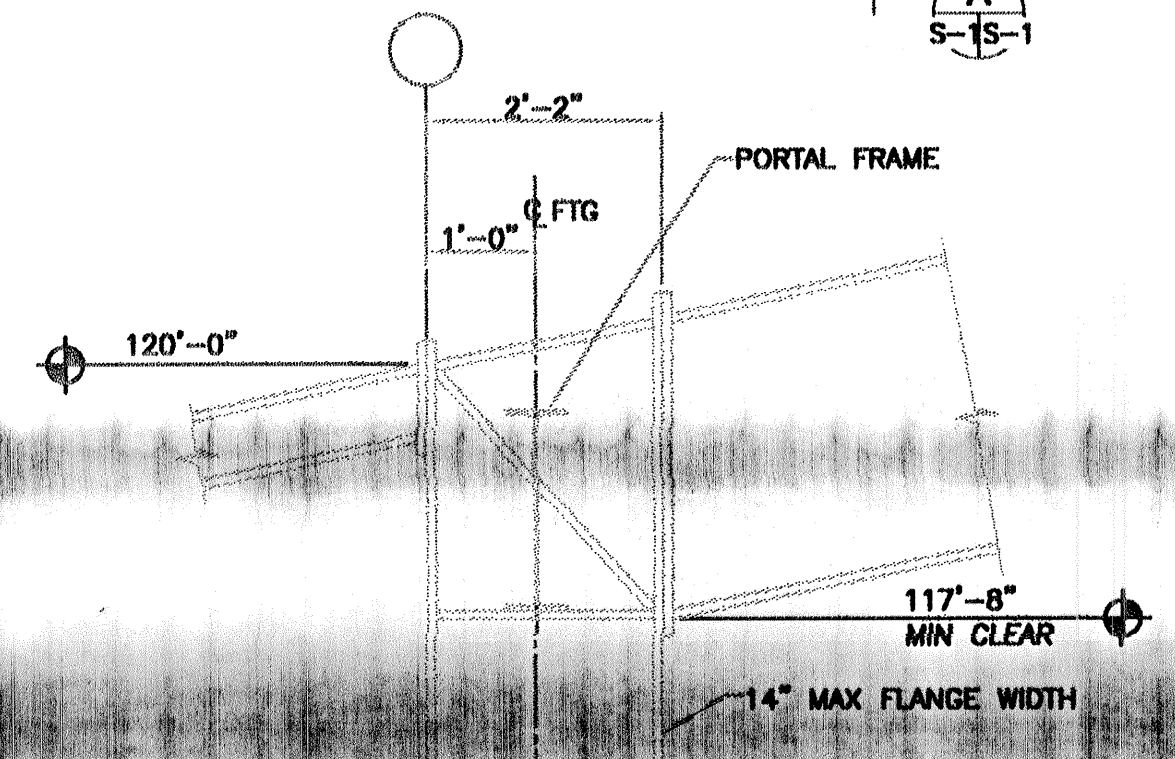
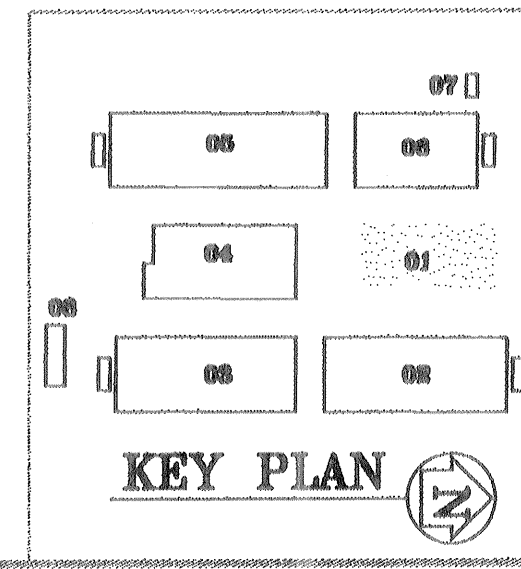
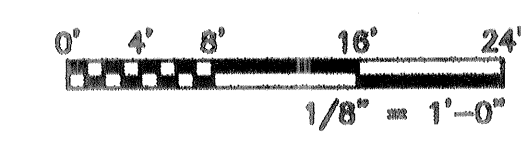
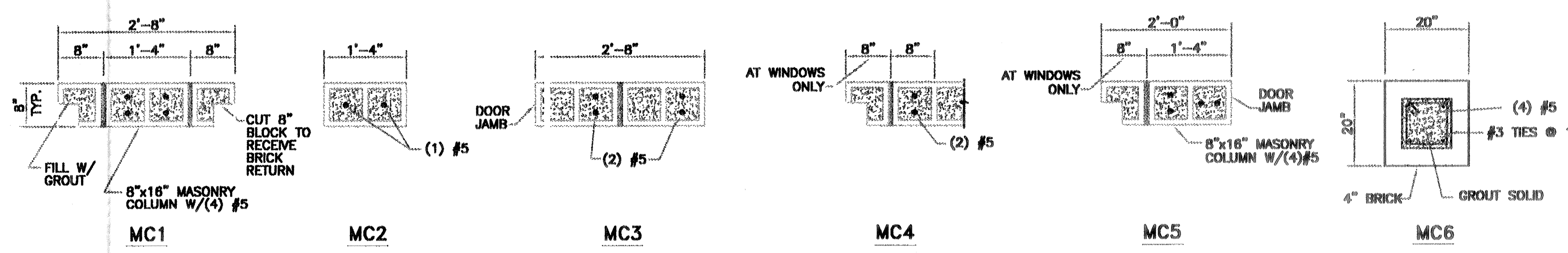


- NOTES:**
- COORDINATE ALL WALL DIMENSIONS WITH ARCHITECTURAL DRAWINGS (INCLUDING NOM. WALL THICKNESS).
  - FIN GROUND FLR EL. = 100'-0" (TYPICAL UNLESS NOTED OTHERWISE)  
FIN GROUND FLR REF. EL. = 0' N.G.V.D. (\* SEE CIVIL DRAWINGS)
  - ELEVATIONS T/FOOTING. SEE FOOTING SCHEDULE.
  - SEE DWG S-3 FOR FOOTING SCHEDULE.
  - SEE DWG S-4 FOR MASONRY WALL (MW) SCHEDULE. WALLS NOT DESIGNATED ARE MW32, EXCEPT 4" CMU AT CHASES.
  - SEE DWG S-10 FOR GENERAL NOTES.

**FOUNDATION & SLAB PLAN - BLDG 01**  
1/8" = 1'-0"



**SECTION**  
3/4" = 1'-0"  
S-15-1



BRPH ARCHITECTS ENGINEERS, INC.  
MELBOURNE / ORLANDO / WEST PALM BEACH  
MELBOURNE / FLORIDA  
REGISTERED PROFESSIONAL ENGINEERS  
STATE OF FLORIDA LICENSE NO. 1488

**ELEMENTARY SCHOOL "C"**  
LEESBURG, FLORIDA  
SCHOOL BOARD OF LAKE COUNTY  
**FOUNDATION & SLAB PLAN - BLDG 01**



APPROVED BY  
**A. MILLER**  
DRAWN BY  
**L. ARCHER**  
CHECKED BY  
**ANDREW H. MILLER**  
FL PE-0030161  
PROJECT NO./SAP CODE  
5264.01/S01  
DATE  
06-16-03  
DRAWING NO.  
**S-1**