

SITE PLAN INFORMATION

OWNER / APPLICANT
LAKE COUNTY SCHOOLS
201 WEST BURLINGHAM BLVD.
TAVERES, FL 32778

ARCHITECT
ZYSCOVICH, INC.
250 PARK AVE. SOUTH, #500
WINTER PARK, FL 32789

BUILDER

LEGAL DESCRIPTION
SEE SURVEY FOR LEGAL DESCRIPTION PROVIDED INCLUDED IN THIS SET.

SITE DATA
- LAND USE DESIGNATION: NEW K-8 SCHOOL
- SITE AREA: 900,643 S.F.
- ZONING DISTRICT: R-1 PUBLIC FACILITY/INSTITUTIONAL

SETBACK REQUIREMENTS
* SETBACK REQUIREMENTS AS SET FORTH BY STATE REQUIREMENTS FOR EDUCATIONAL FACILITIES (SREF) AS PRESCRIBED BY THE FLORIDA DEPARTMENT OF EDUCATION.
PROVIDED

FRONT (WEST)	25'-0"	SEE CIVIL PLAN
SIDE	25'-0"	SEE CIVIL PLAN
SIDE	25'-0"	SEE CIVIL PLAN
REAR	25'-0"	SEE CIVIL PLAN

BUILDING CONSTRUCTION INFORMATION

- ALL NEW CONSTRUCTION SHALL COMPLY WITH THE FLORIDA BUILDING CODE, 6TH EDITION 2020 AND THE FLORIDA FIRE PREVENTION CODE, 6TH EDITION 2020M.
- ALL NEW SCHOOL CONSTRUCTION IS CONSIDERED EDUCATIONAL OCCUPANCY, TYPE IB PROTECTED CONSTRUCTION. USE AND OCCUPANCY CLASSIFICATION = E.
PER F.B.C. TABLE 503 FOR I-B: PERMITTED PROPOSED
MAX. STORIES 3 5 STORIES
MAX. HEIGHT 160 FT. (SEE ELEVATIONS)
MAX. AREA UNLIMITED (SEE AREA CALC.)
- AREA CALCULATION - NEW CONSTRUCTION, K8 SCHOOL - THIS PERMIT ONLY
80,706 SQ. FT. BUILDING "100", 1ST FLOOR (IB CONSTRUCTION)
39,945 SQ. FT. BUILDING "100", 2ND FLOOR (IB CONSTRUCTION)
22,721 SQ. FT. BUILDING "100", 3RD FLOOR (IB CONSTRUCTION)
143,372 SF TOTAL NEW BUILDING AREA BUILDING "100"
AREA CALCULATION - NEW CONSTRUCTION BUILDING "200" GYM BUILDING
17,400 SQ. FT. BUILDING "200" 1ST FLOOR (II-B CONSTRUCTION)
AREA CALCULATION - EXISTING AND NEW CONSTRUCTION BUILDING "300" AUDITORIUM
9,000 SF. FT. (II-B CONSTRUCTION)
- NEW EDUCATIONAL FACILITY BUILDINGS ARE FULLY PROTECTED BY FIRE SPRINKLER SYSTEM. (NON-COMBUSTIBLE CONSTRUCTION COVERED WALKWAYS.

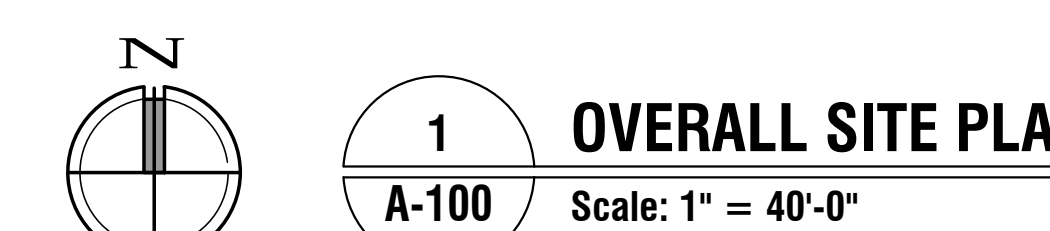
GENERAL SITE NOTES

- CONTRACTOR SHALL COORDINATE ALL UTILITIES, SYSTEMS AND INFRASTRUCTURE AS REQUIRED TO FACILITATE THE NEW CONSTRUCTION.
- SLOPE ALL SIDEWALKS, BIKE PARKING LOTS, DUMPSTER PAD, PLAYGROUNDS, COURTS AND HARD SURFACED AREAS TO DRAIN, COORDINATE WITH CIVIL PLANS.
- CONTRACTOR TO PROVIDE A LIFE SAFETY SITE PLAN LOCATING THE "STAGING AREA", PROTECTED WITH A TEMPORARY CHAIN LINK FENCE AND GATES PER SECTION 01 50 00. PLAN SHALL ALSO INCLUDE ALL PROTECTED PLANTING AND WILD LIFE AREAS AS WELL AS THE DEFINED LIMITS OF CONSTRUCTION AND ACCESS.
- COORDINATE LOCATION AND SIZE OF AREAS REQUIRED FOR UTILITIES LOCATED ABOVE GROUND. ALL ABOVE GROUND UTILITIES AND EQUIPMENT SHALL BE PROTECTED BY A 6'-0" HIGH CHAINLINK FENCE WITH ACCESS GATE, PADLOCK & CHAIN. REFER TO ALL SYSTEMS AND UTILITIES DRAWINGS.
- MINIMUM FLOOR ELEVATION TO BE MAINTAINED PER CIVIL DESIGN AND REQUIRED CALCULATIONS.

PARKING CALCULATIONS

PER F.B.C. CHAPTER 453.10.2.8. 1346 STUDENT STATIONS

PARKING FOR:	REQUIRED	PROVIDED
STAFF/KITCHEN STAFF	125	152
VISITOR 1/100 STUDENTS	15	15
TOTALS	140	167
ACCESSIBLE PARKING: (INCLUDED WITHIN TOTAL)		
F.B.C. ACCESSIBILITY CODE	5	6



Theatre Consultant
TSG Design Solutions
1800 Green Hill Blvd, Ste 103
West Palm Beach, Florida 33406
(561) 991-4111

M/E/P/T Engineers
Mater Professional Engineering
1000 W. 10th Avenue, Unit 2
Tallahassee, FL 32310
(904) 746-0022

Civil Engineer
Krina Weeks Civil Engineers
1000 W. 10th Avenue, Unit 2
Tallahassee, FL 32310
(904) 746-0022

Landscaping Architecture
Bonnell Design Group
400 South Orlando Ave, Ste 201
Orlando, Florida 32806
(407) 822-1988

Project
Lake County Schools
Aurelia Cole Academy K-8
New + Renovation Construction
301 East Avenue, Clermont, FL 34711
Lake County Schools Project # 4769.H



ARCHITECT
A.A.C. 001431

ZYSCOVICH ARCHITECTS
250 S Park Ave., Suite 510
Winter Park, FL 32789
t 407.674.1959
e info@zyscovich.com
w www.zyscovich.com

Seal
Jose L. Murquido, RA
Reg. No. AR00070670

Copyright © 2019 Zyscovich, Inc. All rights reserved. This drawing and specification are the property of Zyscovich, Inc. whether the project for which they were prepared is completed or not. They are not to be used in any manner on other projects or extensions to the project except by agreement in writing and with the appropriate compensation to Zyscovich, Inc. Reproduction of these drawings without the written consent of Zyscovich, Inc. is prohibited.

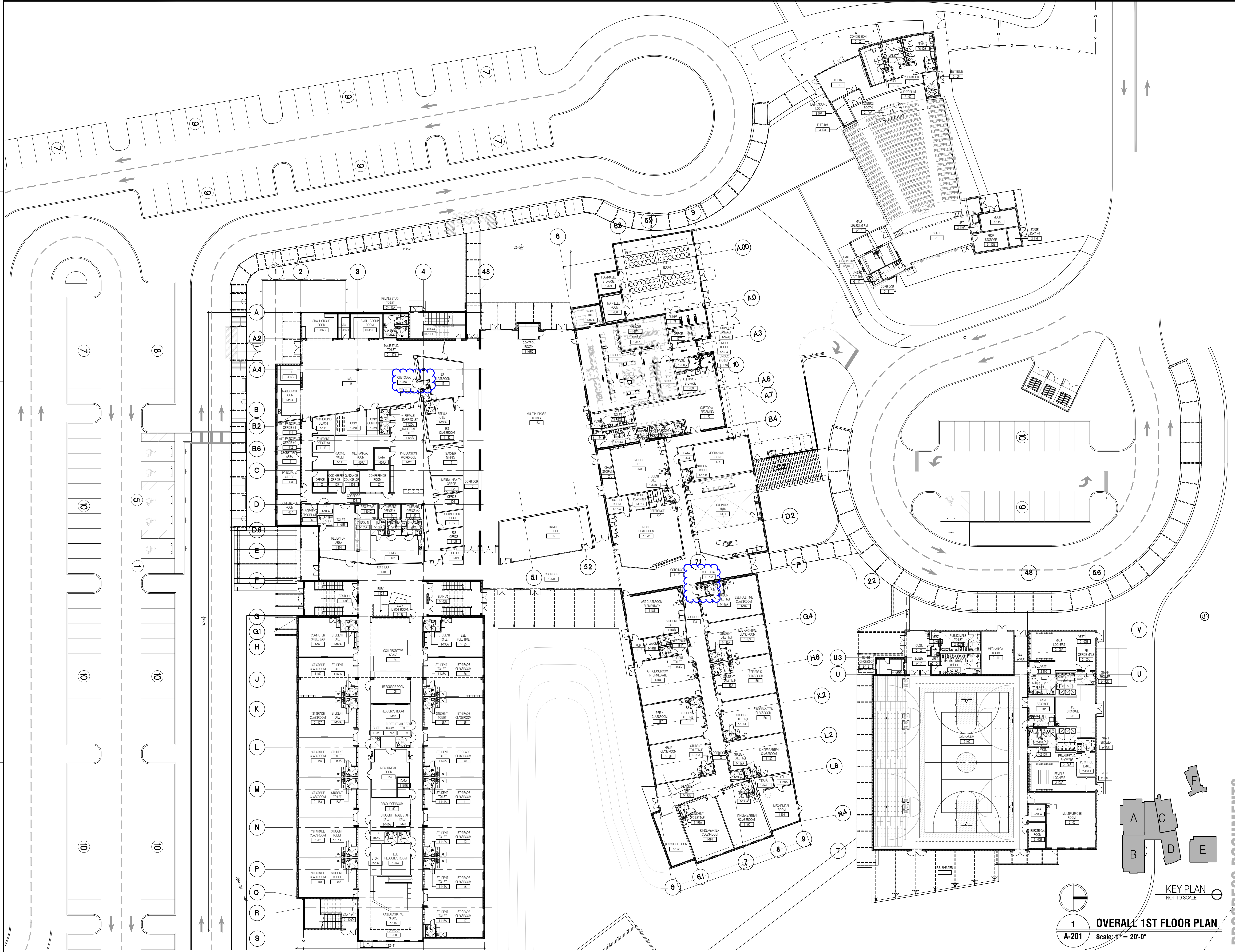
Revised:

OVERALL SITE PLAN

2002CMS 01-05-2021

A-100

PROGRESS DOCUMENTS



1
A-201
OVERALL 1ST FLOOR PLAN
Scale: 1" = 20'-0"

Theatre Consultant
TSG Design Solutions
1800 Forest Hill Blvd, Ste 103
Aurora, FL 32006
(407) 486-1114

M/E/P/T Engineers
Engineering
Kilva Weeks Civil Engineers
400 South Orlando Ave, Ste 201
Orlando, FL 32801
(407) 742-0022

Civil Engineer
Kilva Weeks Civil Engineers
400 South Orlando Ave, Ste 201
Orlando, FL 32801
(407) 742-0022

ME/PT Engineers
Educational Technology
Layer 8 Solutions
1778 W. 28th Avenue, Unit 2
Hialeah, FL 33015

Project
Lake County Schools
Aurelia Cole Academy K-8
New + Renovation Construction
301 East Avenue, Clermont, FL 34711
Lake County Schools Project # 4768LH



ARCHITECT
AAC-001431
ZYSCOVICH
ARCHITECTS
250 S Park Ave., Suite 510
Winter Park, FL 32789
t - 407.674.1959
e - info@zyscovich.com
w - www.zyscovich.com

Seal
Jose L. Murguideo, RA
Reg. No. AH0010670

COPYRIGHT © 2019 ZYSCOVICH, INC. ALL RIGHTS RESERVED. THIS DRAWING AND SPECIFICATION ARE PROPERTY OF ZYSCOVICH, INC. WHETHER THE PROJECT FOR WHICH THEY WERE PREPARED IS COMPLETED OR NOT. THEY ARE NOT TO BE USED IN ANY MANNER ON OTHER PROJECTS OR EXTENDED TO THIS PROJECT EXCEPT BY AGREEMENT IN WRITING AND WITH THE APPROPRIATE COMPENSATION TO ZYSCOVICH, INC. REPRODUCTION OF SPECIFICATIONS WITHOUT THE WRITTEN CONSENT OF ZYSCOVICH, INC. IS PROHIBITED.

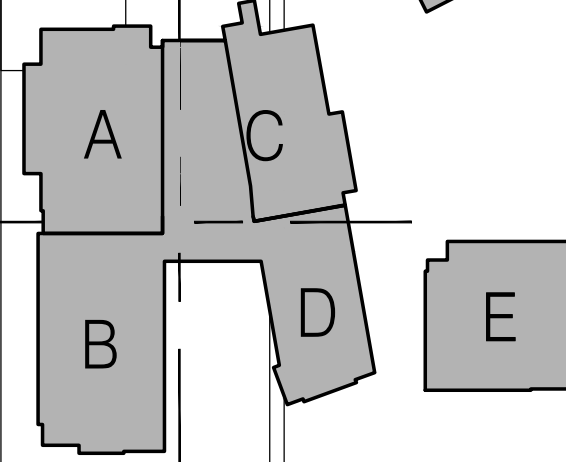
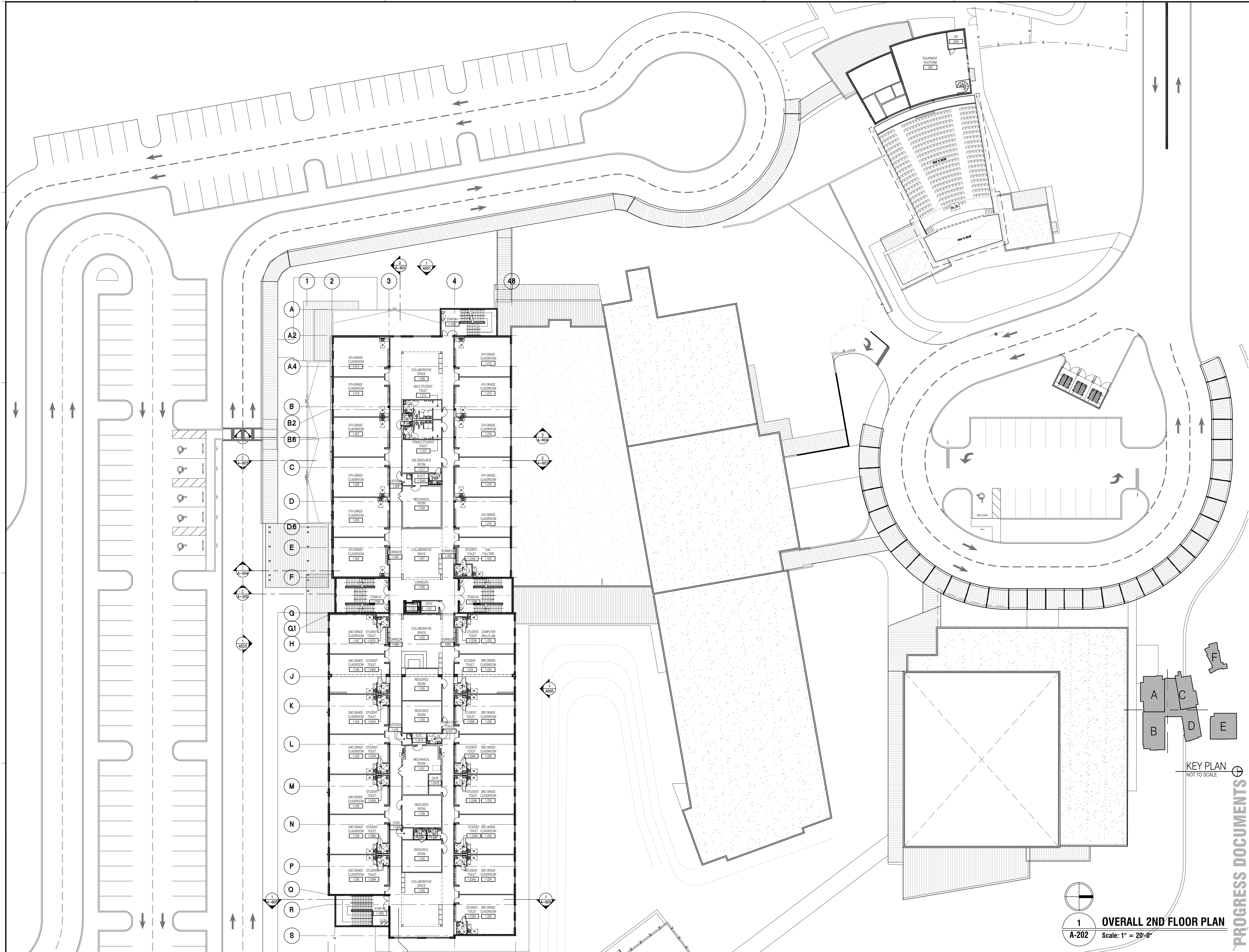
Revised:

OVERALL 1ST FLOOR PLAN

2002CMS 01 - 05 - 2021

A-201

PROGRESS DOCUMENTS

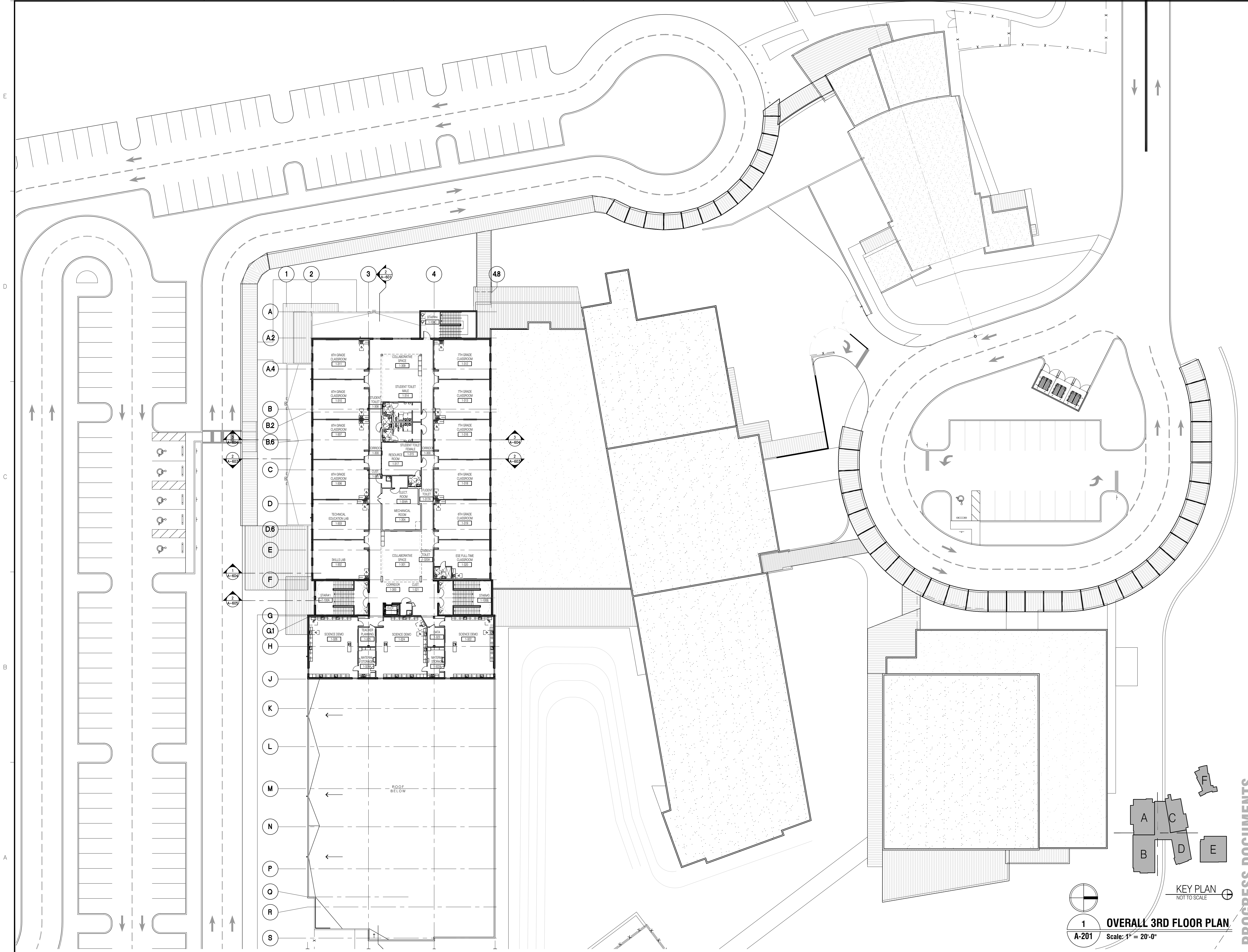


1 OVERALL 2ND FLOOR PLAN
A-202 Scale: 1" = 20'-0"

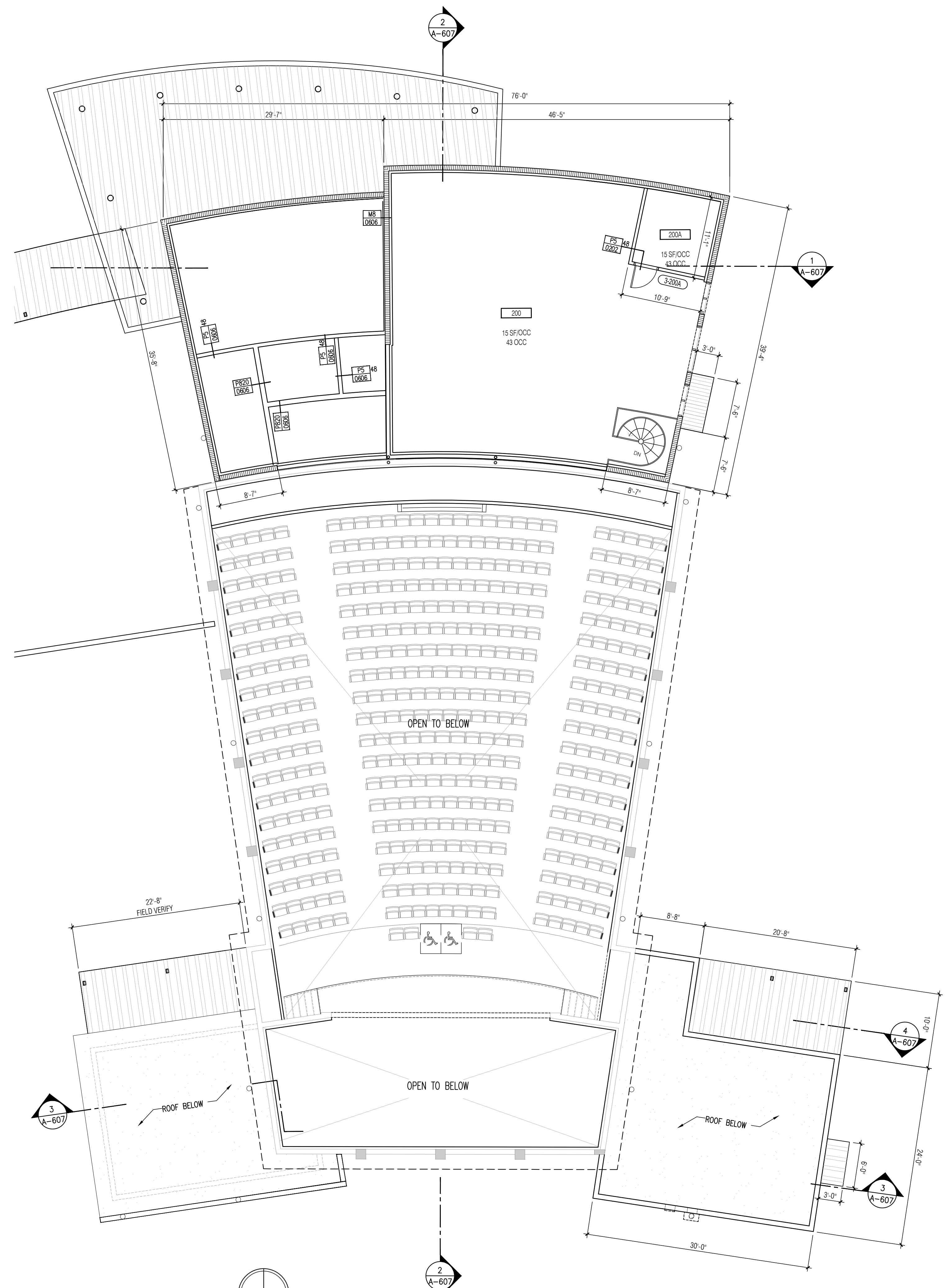
Architect	ZYSCOVICH ARCHITECTS 250 S Park Ave., Suite 510 Winter Park, FL 32789 t 407.674.1959 e info@zyscovich.com w www.zyscovich.com
Seal	Jose L. Murguideo, RA Reg. No. AR0010670
Project	Lake County Schools Aurelia Cole Academy K-8 New + Renovation Construction 301 East Avenue, Clermont, FL 34711 Lake County Schools Project # 4769LH
Civil Engineer	Alma Weas Civil Engineers 1300 Corporate Drive Altamonte Springs, Florida 32714 (407) 478-8750, FL Landscape Architecture Bonnet Design Group 400 South Orange Ave., Ste. 201 Orlando, Florida 32801 (407) 425-2582, FL
ME/ET Engineers	Maren Professional Engineering 1300 Corporate Drive West Palm Beach, Florida 33406 (561) 967-4511, FL Layer 8 Solutions Educational Technology 7700 W. 20th Avenue, Unit 2 Hialeah, Florida 33016
Theatre Consultant	TSC Design Solutions 1300 Corporate Drive West Palm Beach, Florida 33406 (561) 967-4511, FL

PROGRESS DOCUMENTS

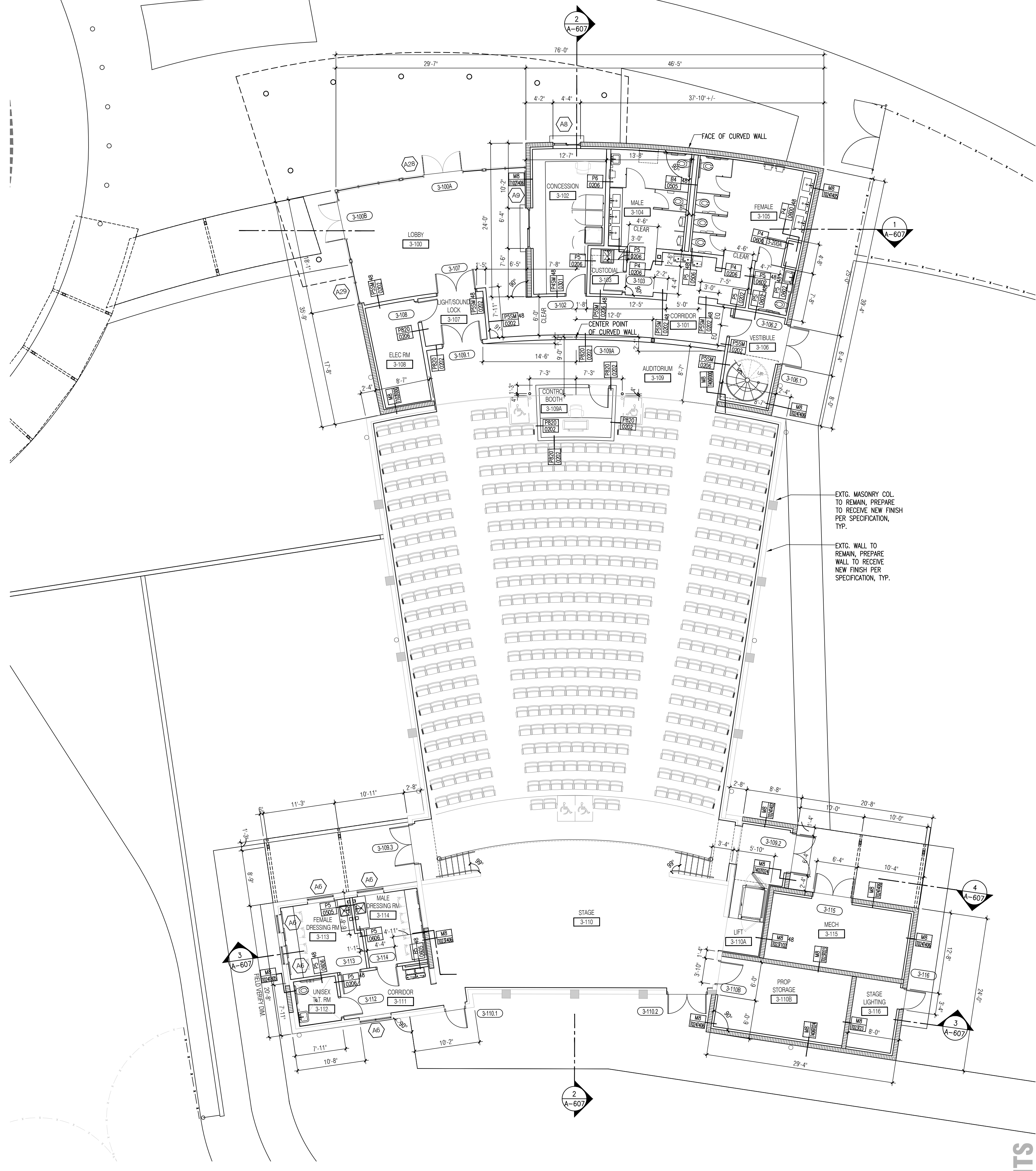
Revised:	
OVERALL 2ND FLOOR PLAN	
2002CMSS	01 - 05 - 2021
A-202	



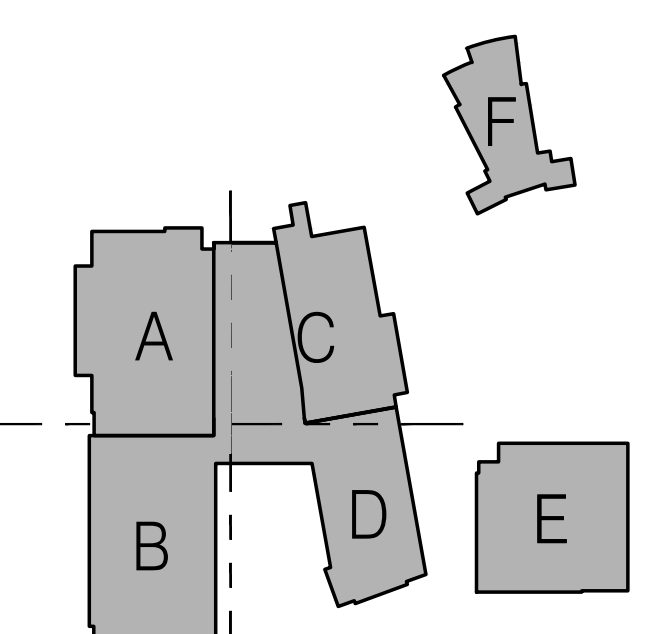
	Architect AAC.001431 ZYSCOVICH ARCHITECTS 250 S Park Ave, Suite 510 Winter Park, FL 32789 t 407.674.1959 e info@zyscovich.com w www.zyscovich.com	Project Lake County Schools Aurelia Cole Academy K-8 New + Renovation Construction 301 East Avenue, Clermont, FL 34711 Lake County Schools Project # 4769LH	Civil Engineer Kima Weeks Civil Engineers Kima Weeks Civil Engineers 1000 Florida Blvd, Ste 103 Maitland, FL 32751 (407) 478-8700, FL (407) 478-8822 (F)	ME/PT Engineers Layer 6 Solutions Educational Technology Layer 6 Solutions 1000 Florida Blvd, Ste 103 Maitland, FL 32751 (407) 478-8700, FL (407) 478-8822 (F)	Theatre Consultant TSC Design Solutions 1000 Florida Blvd, Ste 103 Maitland, FL 32751 (407) 478-8700, FL (407) 478-8822 (F)
Architect Seal Jose L. Muro, J.D., P.A. Reg. No. AR0010670	COPYRIGHT © 2019 ZYSCOVICH, INC. ALL RIGHTS RESERVED. THIS DRAWING AND SPECIFICATIONS ARE THE PROPERTY OF ZYSCOVICH, INC. WHETHER THE PROJECT FOR WHICH THEY ARE PREPARED IS COMPLETED OR NOT. THIS DRAWING IS NOT TO BE USED IN ANY MANNER ON OTHER PROJECTS OR EXTENSIONS TO THIS PROJECT EXCEPT BY AGREEMENT IN WRITING AND WITH THE APPROPRIATE COMPENSATION TO ZYSCOVICH, INC. REPRODUCTION OF SPECIFICATIONS WITHOUT THE WRITTEN CONSENT OF ZYSCOVICH, INC. IS PROHIBITED.				
Revised: _____ _____ _____	PROGRESS DOCUMENTS				
1 A-201 Scale: 1" = 20'-0"	OVERALL 3RD FLOOR PLAN NOT TO SCALE				2002CMSS 01 - 05 - 2021
A-203					OVERALL 3RD FLOOR PLAN



2 ENLARGED EQUIPMENT PLATFORM PLAN
A-216 Scale: 1/8" = 1'-0"



1 ENLARGED AUDITORIUM FLOOR PLAN
A-216 Scale: 1/8" = 1'-0"



KEY PLAN
 NOT TO SCALE

<p>Architect ZYSCOVICH ARCHITECTS 250 S Park Ave., Suite 510 Winter Park, FL 32789 t 407.674.1959 e info@zyscovich.com w www.zyscovich.com</p>	<p>Project Lake County Schools Aurelia Cole Academy K-8 New + Renovation Construction 901 East Avenue, Clermont, FL 34711 Lake County Schools Project # 4789LH</p>	<p>Civil Engineer Klma Weeks Civil Engineers 1300 Columbia Drive Winter Park, Florida 32774 (407) 478-8760 Fax (407) 754-0202 Tel</p>	<p>ME/ET Engineers Micro Professional Engineering 130 Columbia Drive Winter Park, Florida 32774 (407) 754-0202 Tel</p>	<p>Theatre Consultant TSC Design Solutions 1000 West Palm Beach, Florida 33406 (561) 907-4511 Tel</p>
<p>Seal Jose L. Murquidino, RA Reg. No. AR0010670</p>	<p>Architectural Seal A.A.C. 001431</p>	<p>Professional Seal Professional Engineer License No. 12000</p>	<p>Professional Seal Professional Engineer License No. 12000</p>	<p>Professional Seal Professional Engineer License No. 12000</p>
<p>Revised: _____ _____ _____</p>	<p>2022CMSS 01 - 05 - 2021</p>	<p>A-216</p>	<p>PROGRESS DOCUMENTS</p>	<p>Copyright © 2019 ZYSCOVICH, INC. ALL RIGHTS RESERVED. THESE DRAWINGS AND SPECIFICATIONS ARE INSTRUMENTS OF SERVICE AND SHALL REMAIN THE PROPERTY OF ZYSCOVICH, INC. UNLESS THEY ARE SPECIFICALLY IDENTIFIED AS BEING THE PROPERTY OF ANOTHER PARTY. ANY REUSE OR REPRODUCTION OF THESE DRAWINGS OR SPECIFICATIONS WITHOUT THE WRITTEN CONSENT OF ZYSCOVICH, INC. IS PROHIBITED.</p>