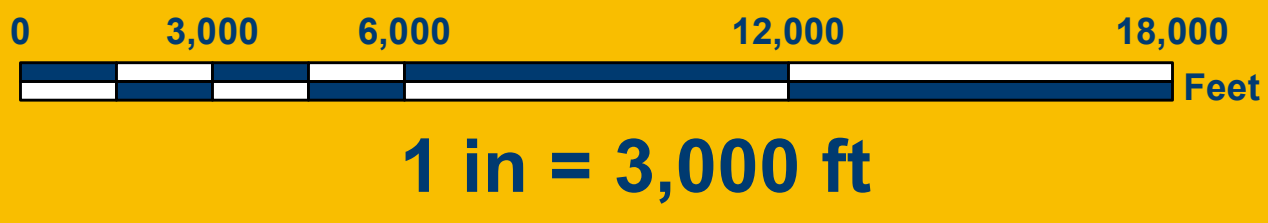


Lake County Schools -- Board Member Districts
RESIDENCE DISTRICT 3



GROVELAND

District 1

MONTVERDE

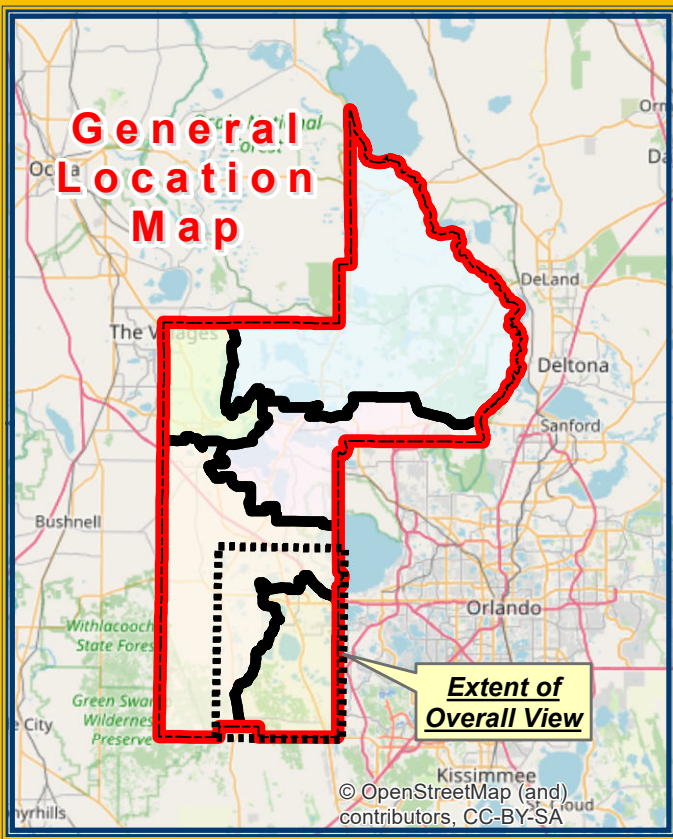
MINNEOLA

CLERMONT

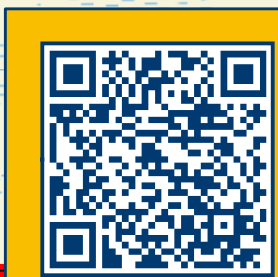
District 3

Legend

- Lake County Boundary
 - Residence Member District Boundaries
 - District 1 - Bill Mathias, Vice-Chairman
 - District 2 - Dr. Kristi Burns, Chairman
 - District 3 - Marc Dodd, Member
 - District 4 - Sandy Gamble, Member
 - District 5 - Stephanie Luke, Member
- | | |
|---|---|
| Municipalities | Mascotte |
| Clermont | Minneola |
| Groveland | Montverde |



Project No.: 0034
 File Name: Approved Board Member District 3
 Map - 20200616-24x36.mxd
 Project Name: School Board District Map
 Creation Date: November 10, 2011
 Revision Date: June 16, 2020
 Created By: William C. Davis, GISP



Scan QR-Code with SmartPhone to download PDF version of map



Scan QR-Code with SmartPhone to activate an interactive web map application