

Lake County Schools -- Board Member Districts
RESIDENCE DISTRICT 1

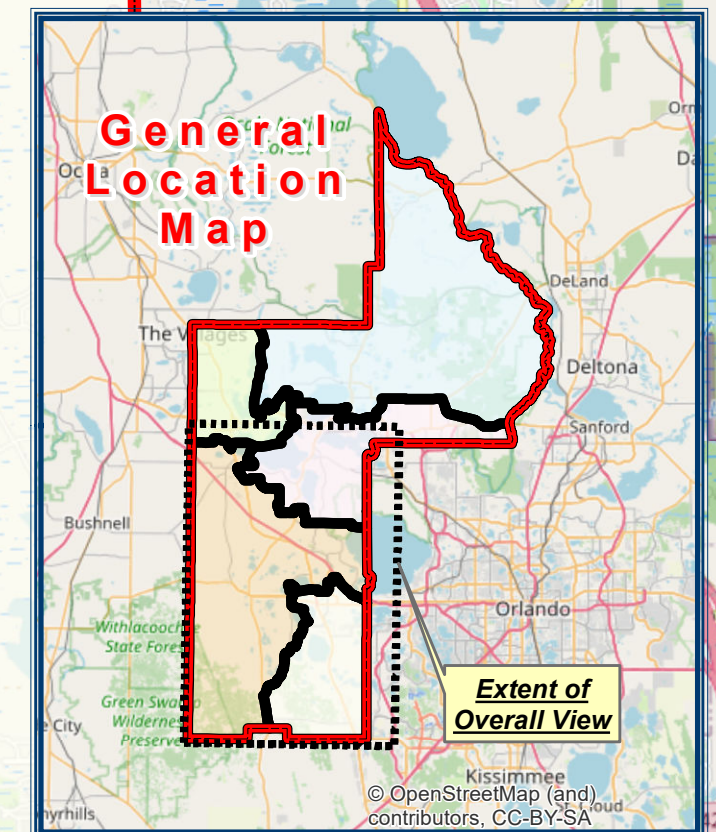
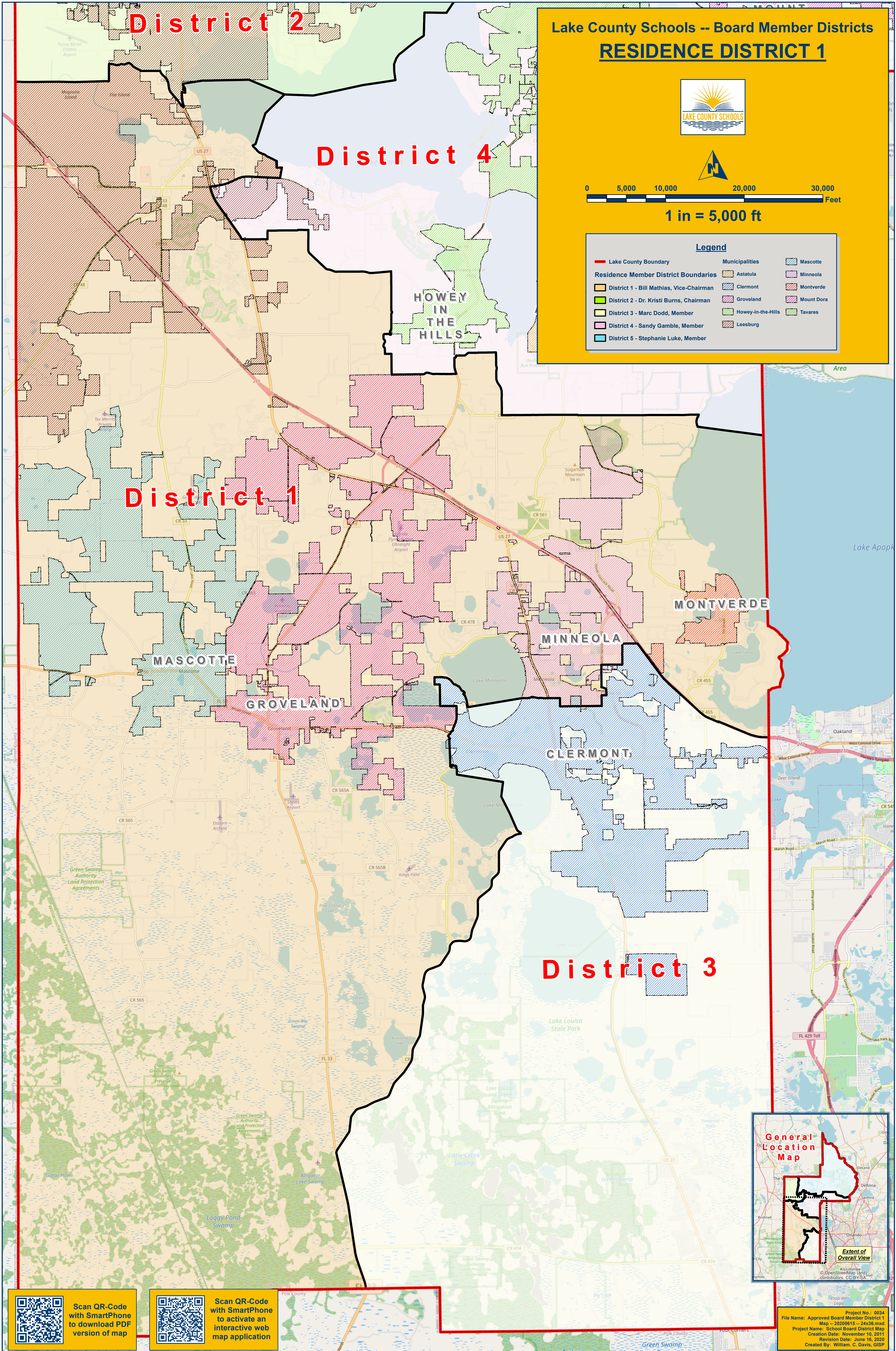


0 5,000 10,000 20,000 30,000 Feet

1 in = 5,000 ft

Legend

Lake County Boundary	Mascotte
Residence Member District Boundaries	Astatula
District 1 - Bill Mathias, Vice-Chairman	Clermont
District 2 - Dr. Kristi Burns, Chairman	Groveland
District 3 - Marc Dodd, Member	Howey-in-the-Hills
District 4 - Sandy Gamble, Member	Leesburg
District 5 - Stephanie Luke, Member	Minneola
	Montverde
	Mount Dora
	Tavares



Scan QR-Code with SmartPhone to download PDF version of map

Scan QR-Code with SmartPhone to activate an interactive web map application

Project No.: 0034
 File Name: Approved Board Member District 1
 Map -- 20200615 -- 24x36.mxd
 Project Name: School Board District Map
 Creation Date: November 10, 2014
 Revision Date: June 16, 2020
 Created By: William C. Davis, GISP