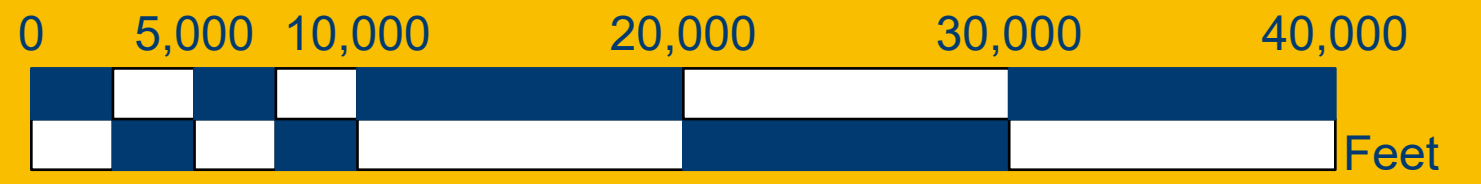


District 2

Lake County - Board Member Districts

District 1



Municipalities

- ASTATULA
- CLERMONT
- GROVELAND
- HOWEY-IN-THE-HILLS
- LEESBURG

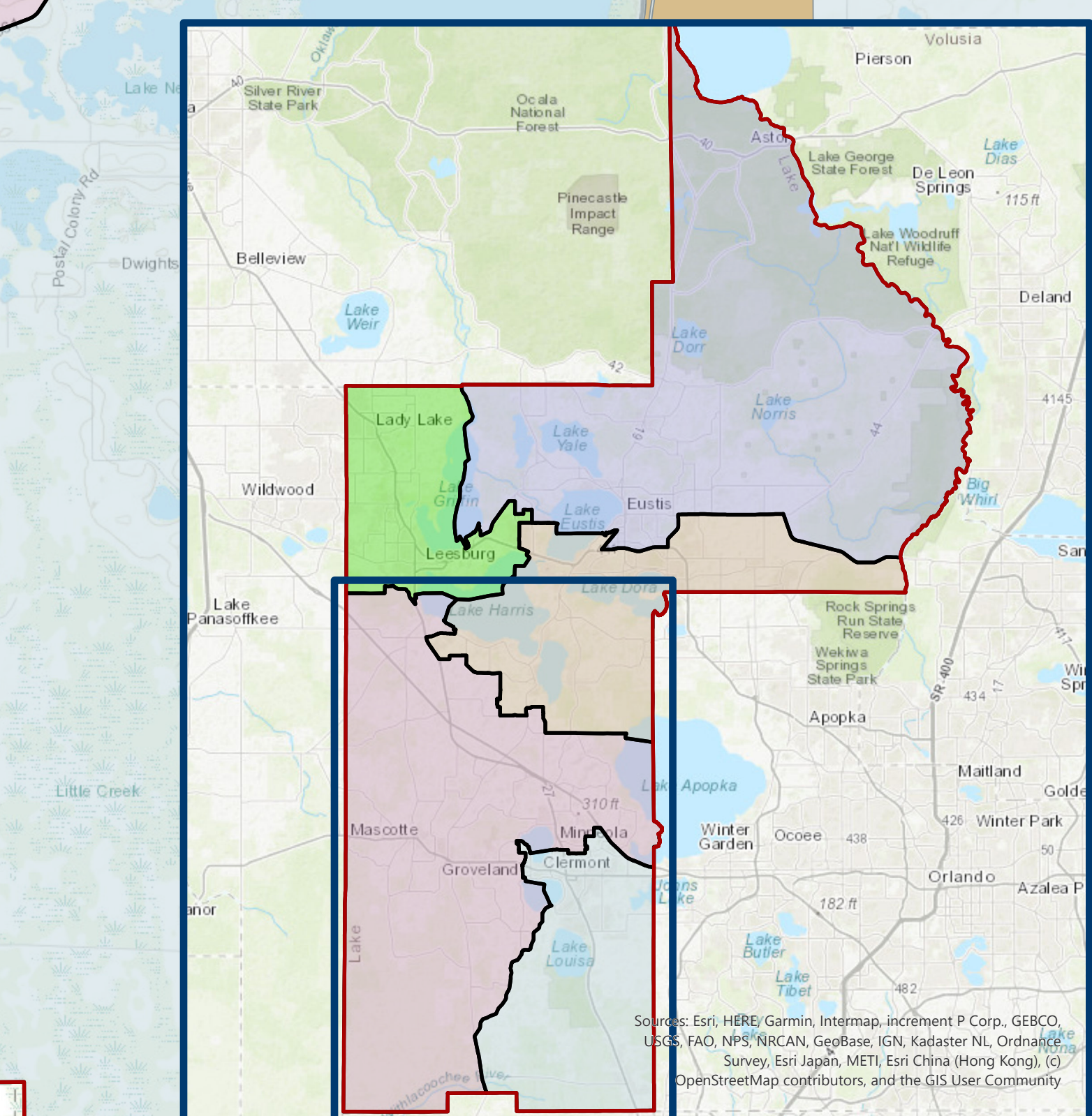
Municipalities

- MASCOTTE
- MINNEOLA
- MONTVERDE
- MOUNT DORA
- TAVARES

Residence Member District Boundaries

- District 1 - Bill Mathias, Chairman
- District 2 - Kristi Burns, PhD, Member
- District 3 - Mark Dodd, Member
- District 4 - Mollie Cunningham, Member
- District 5 - Stephanie Luke, Vice-Chairperson

District 1



Sources: Esri, HERE, Garmin, Intermap, increment P Corp., GEBCO, USGS, FAO, NPS, NRCAN, GeoBase, IGN, Kadaster NL, Ordnance Survey, Esri Japan, METI, Esri China (Hong Kong), Swisstopo, Mapbox, OpenStreetMap contributors, and the GIS User Community