

Lake County School Board

2012-2013 Middle Attendance Map
Lake County, Florida



50,000 25,000 0 50,000 100,000
Feet

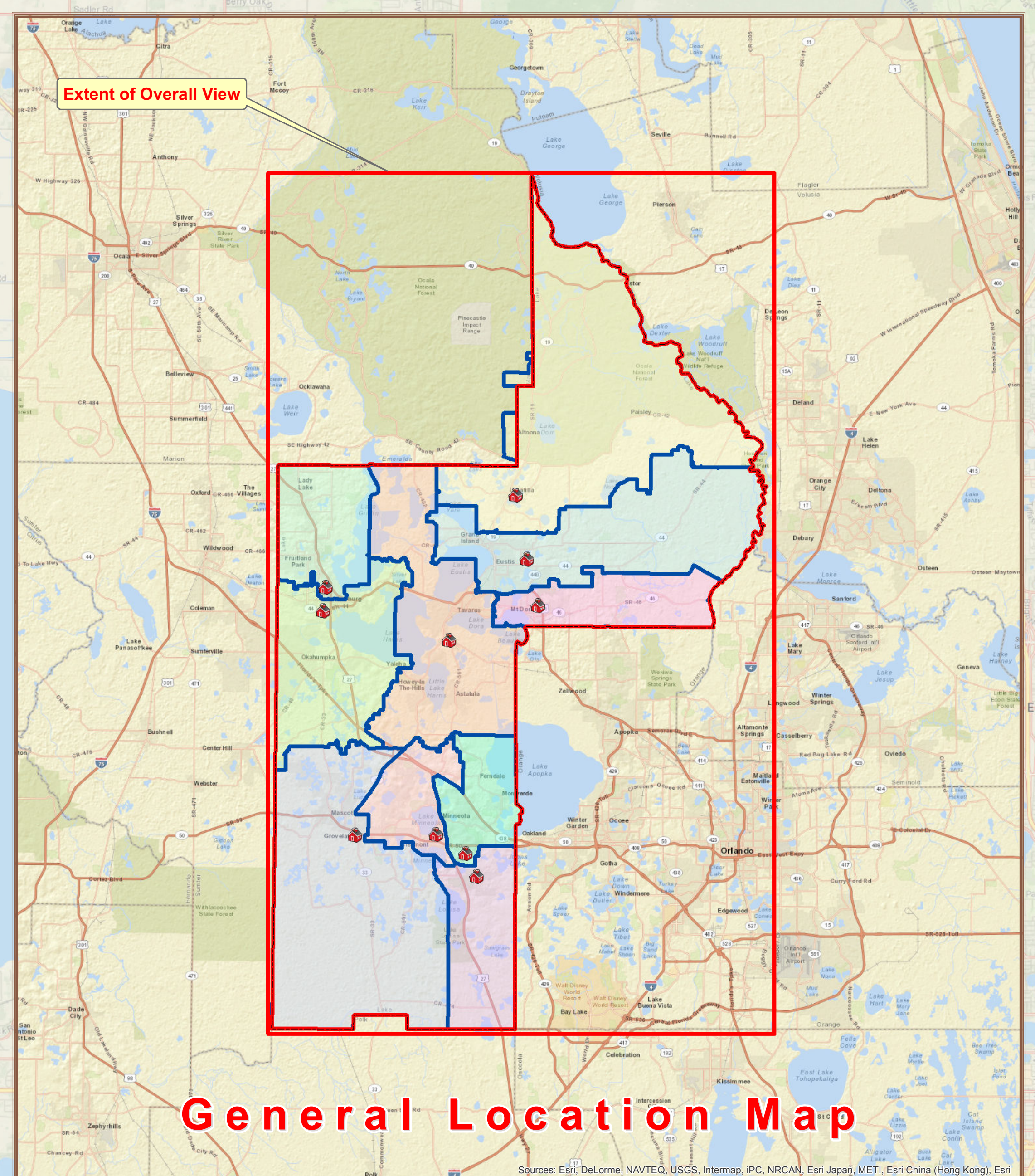
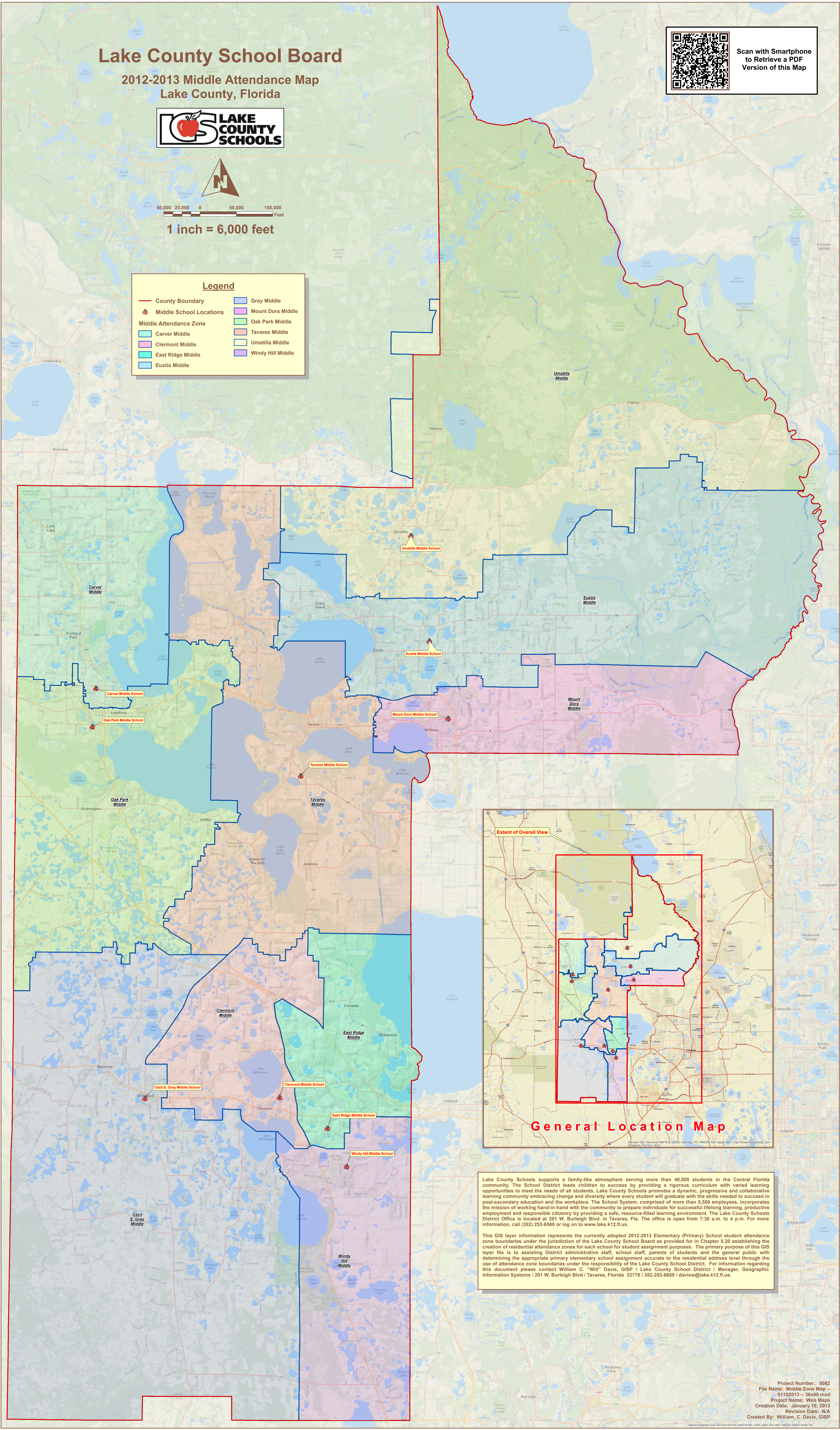
1 inch = 6,000 feet

Legend

County Boundary	Gray Middle
Middle School Locations	Mount Dora Middle
Middle Attendance Zone	Oak Park Middle
Carver Middle	Tavares Middle
Clermont Middle	Umatilla Middle
East Ridge Middle	Windy Hill Middle
Eustis Middle	



Scan with Smartphone
to Retrieve a PDF
Version of this Map



Lake County Schools supports a family-like atmosphere serving more than 40,000 students in the Central Florida community. The School District leads children to success by providing a rigorous curriculum with varied learning opportunities to meet the needs of all students. Lake County Schools promotes a dynamic, progressive and collaborative learning community embracing change and diversity where every student will graduate with the skills needed to succeed in post-secondary education and the workplace. The School System, comprised of more than 5,500 employees, incorporates the mission of working hand-in-hand with the community to prepare individuals for successful lifelong learning, productive employment and responsible citizenry by providing a safe, resource-filled learning environment. The Lake County Schools District Office is located at 201 W. Burlingh Blvd. in Tavares, Fla. The office is open from 7:30 a.m. to 4 p.m. For more information, call (352) 253-6800 or log on to www.lake.k12.fl.us.

This GIS layer information represents the currently adopted 2012-2013 Elementary (Primary) School student attendance zone boundaries under the jurisdiction of the Lake County School Board as provided for in Chapter 5.20 establishing the creation of residential attendance zones for each school for student assignment purposes. The primary purpose of this GIS layer file is to assist District administrative staff, school staff, parents of students and the general public with determining the appropriate primary elementary school assignment accurate to the residential address level through the use of attendance zone boundaries under the responsibility of the Lake County School District. For information regarding this document please contact William C. "Will" Davis, GISP / Lake County School District / Manager, Geographic Information Systems / 201 W. Burlingh Blvd / Tavares, Florida 32778 / 352-253-6659 / davisw@lake.k12.fl.us