

# Lake County School Board

## 2016-2017 Middle School Attendance Boundary Map Lake County, Florida

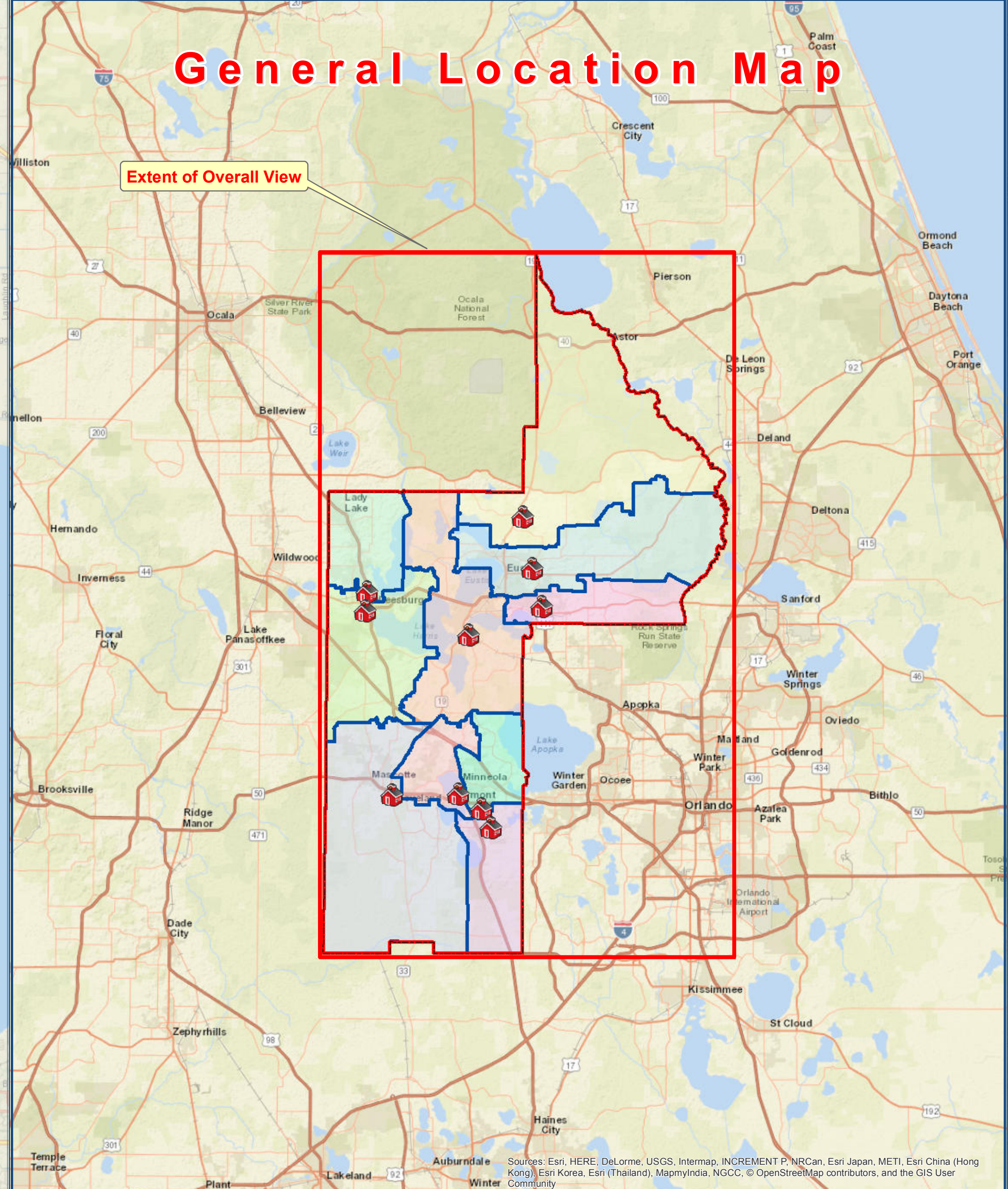
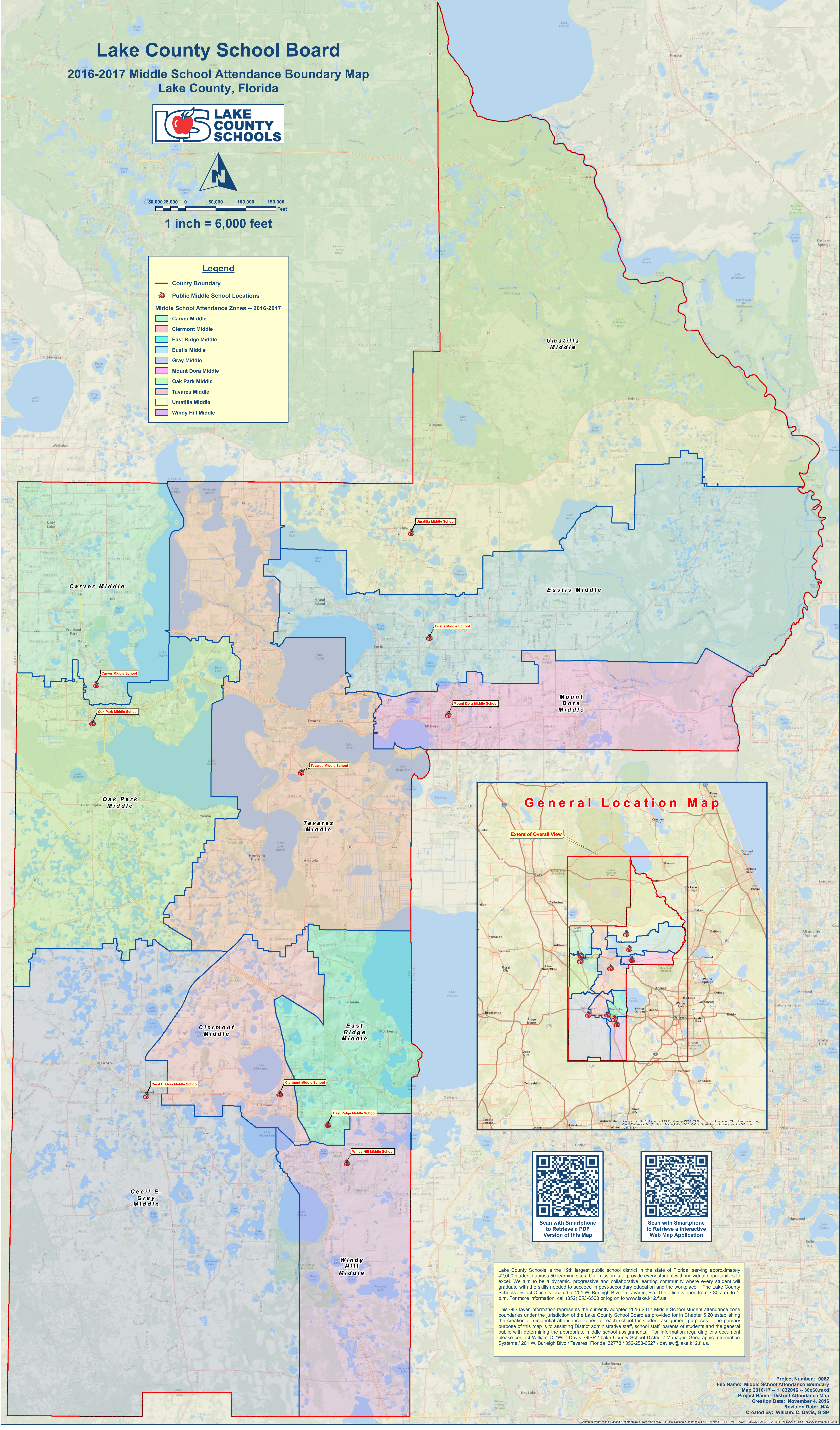


50,000 25,000 0 50,000 100,000 150,000 Feet

1 inch = 6,000 feet

### Legend

- County Boundary
  - Public Middle School Locations
- Middle School Attendance Zones -- 2016-2017
- Carver Middle
  - Clermont Middle
  - East Ridge Middle
  - Eustis Middle
  - Gray Middle
  - Mount Dora Middle
  - Oak Park Middle
  - Tavares Middle
  - Umatilla Middle
  - Windy Hill Middle



Scan with Smartphone to Retrieve a PDF Version of this Map



Scan with Smartphone to Retrieve a Interactive Web Map Application

Lake County Schools is the 19th largest public school district in the state of Florida, serving approximately 42,000 students across 50 learning sites. Our mission is to provide every student with individual opportunities to excel. We aim to be a dynamic, progressive and collaborative learning community where every student will graduate with the skills needed to succeed in post-secondary education and the workplace. The Lake County Schools District Office is located at 201 W. Burleigh Blvd. in Tavares, Fla. The office is open from 7:30 a.m. to 4 p.m. For more information, call (352) 253-6500 or log on to [www.lake.k12.fl.us](http://www.lake.k12.fl.us).

This GIS layer information represents the currently adopted 2016-2017 Middle School student attendance zone boundaries under the jurisdiction of the Lake County School Board as provided for in Chapter 5.20 establishing the creation of residential attendance zones for each school for student assignment purposes. The primary purpose of this map is to assist District administrative staff, school staff, parents of students and the general public with determining the appropriate middle school assignments. For information regarding this document please contact William C. "Will" Davis, GISP / Lake County School District / Manager, Geographic Information Systems / 201 W. Burleigh Blvd / Tavares, Florida 32778 / 352-253-6527 / [davisw@lake.k12.fl.us](mailto:davisw@lake.k12.fl.us).