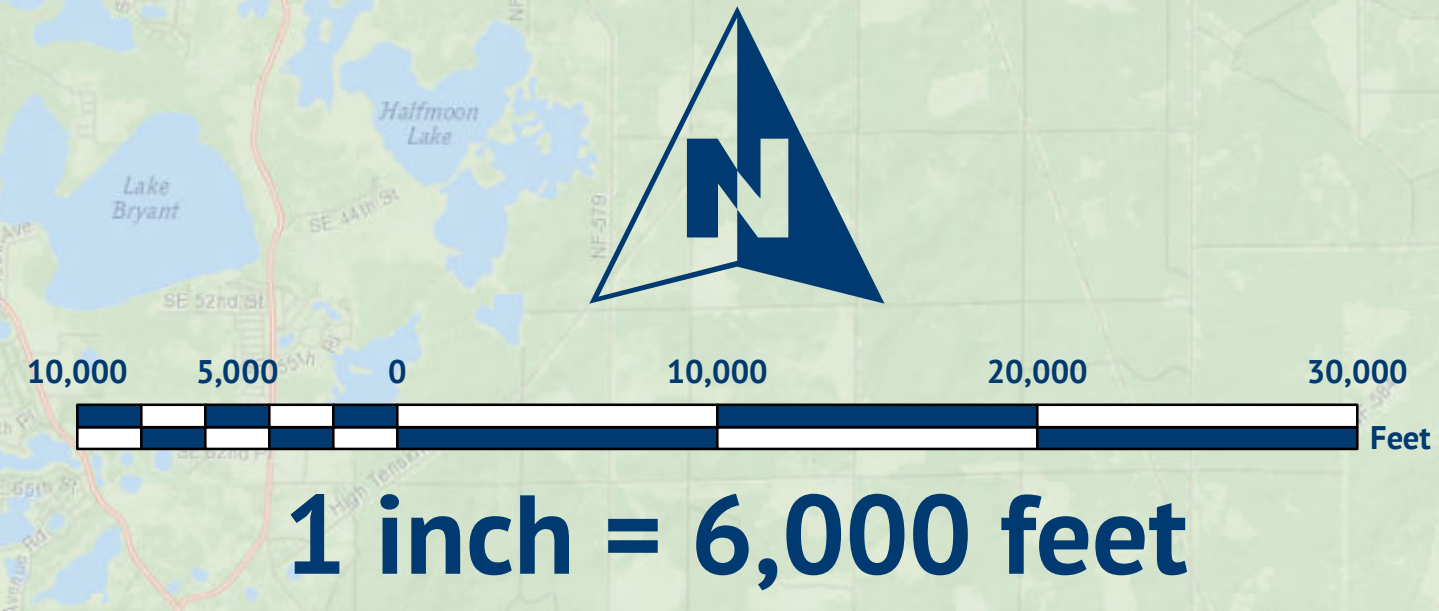


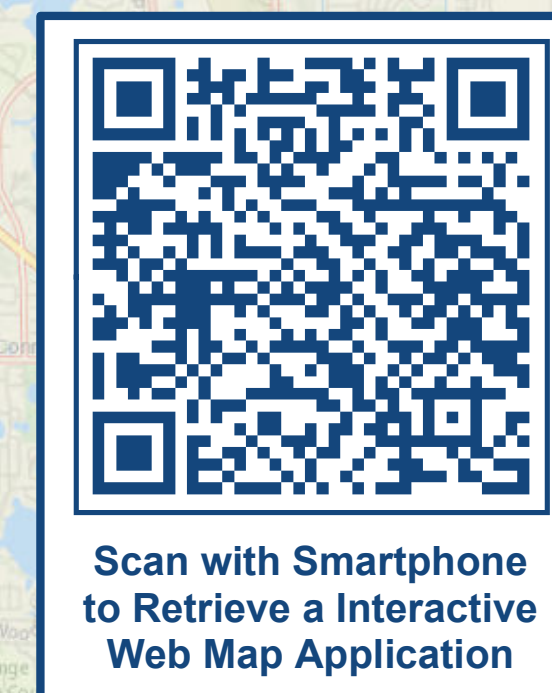
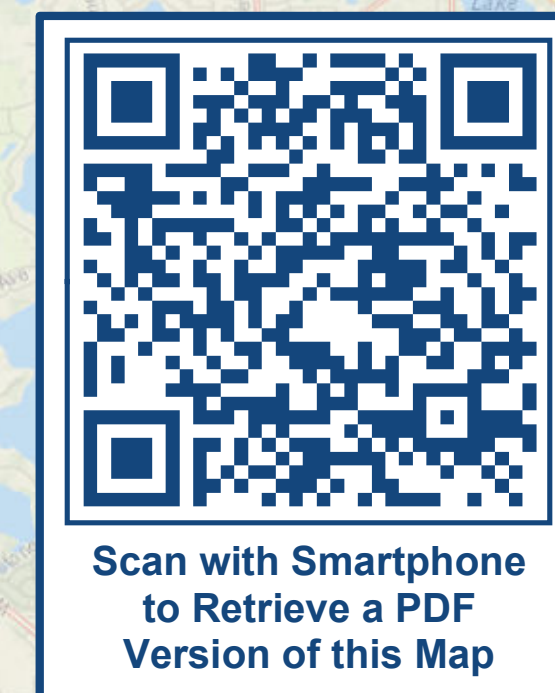
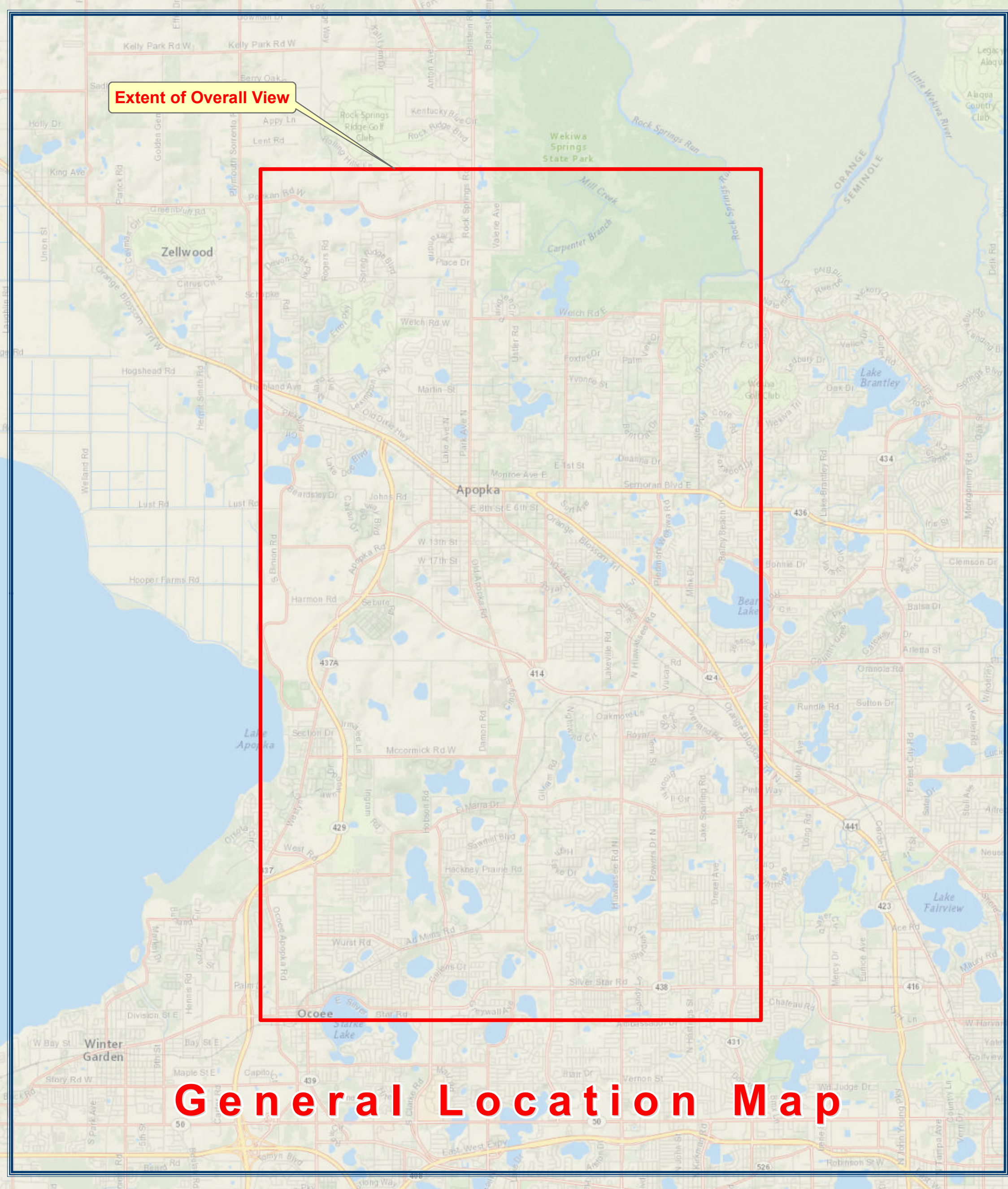
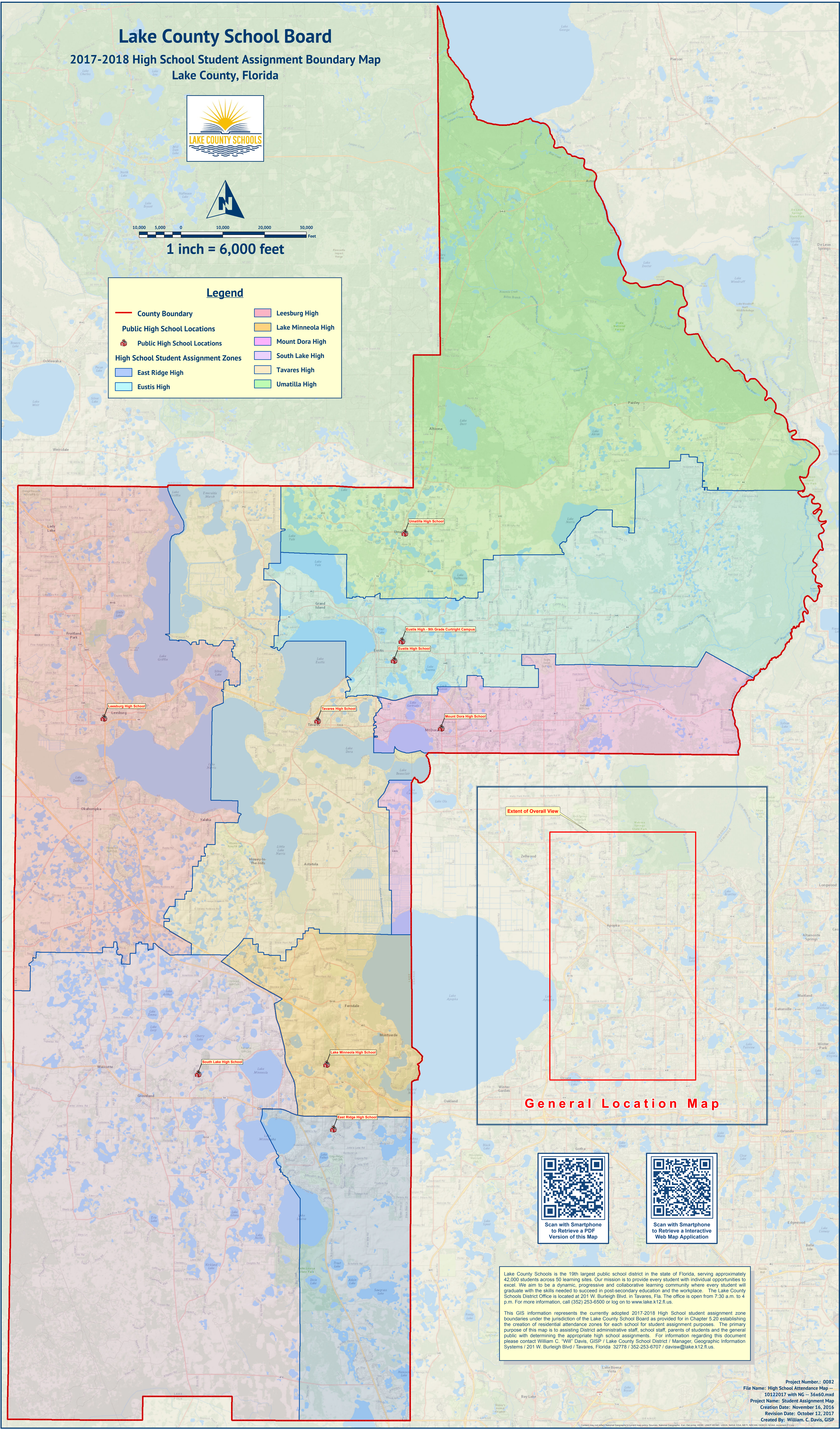
# Lake County School Board

## 2017-2018 High School Student Assignment Boundary Map

### Lake County, Florida



Legend	
	County Boundary
	Leesburg High
	Lake Minneola High
	Mount Dora High
	South Lake High
	Tavares High
	Umatilla High
	Public High School Locations
	East Ridge High
	Eustis High



Lake County Schools is the 19th largest public school district in the state of Florida, serving approximately 42,000 students across 50 learning sites. Our mission is to provide every student with individual opportunities to excel. We aim to be a dynamic, progressive and collaborative learning community where every student will graduate with the skills needed to succeed in post-secondary education and the workplace. The Lake County Schools District Office is located at 201 W. Burleigh Blvd. in Tavares, Fla. The office is open from 7:30 a.m. to 4 p.m. For more information, call (352) 253-6500 or log on to [www.lake.k12.fl.us](http://www.lake.k12.fl.us).

This GIS information represents the currently adopted 2017-2018 High School student assignment zone boundaries under the jurisdiction of the Lake County School Board as provided for in Chapter 5.20 establishing the creation of residential attendance zones for each school for student assignment purposes. The primary purpose of this map is to assist District administrative staff, school staff, parents of students and the general public with determining the appropriate high school assignments. For information regarding this document please contact William C. "Will" Davis, GISP / Lake County School District / Manager, Geographic Information Systems / 201 W. Burleigh Blvd / Tavares, Florida 32778 / 352-253-6707 / [davisw@lake.k12.fl.us](mailto:davisw@lake.k12.fl.us).