

# Lake County School Board

2012-2013 Elementary Attendance Map  
Lake County, Florida



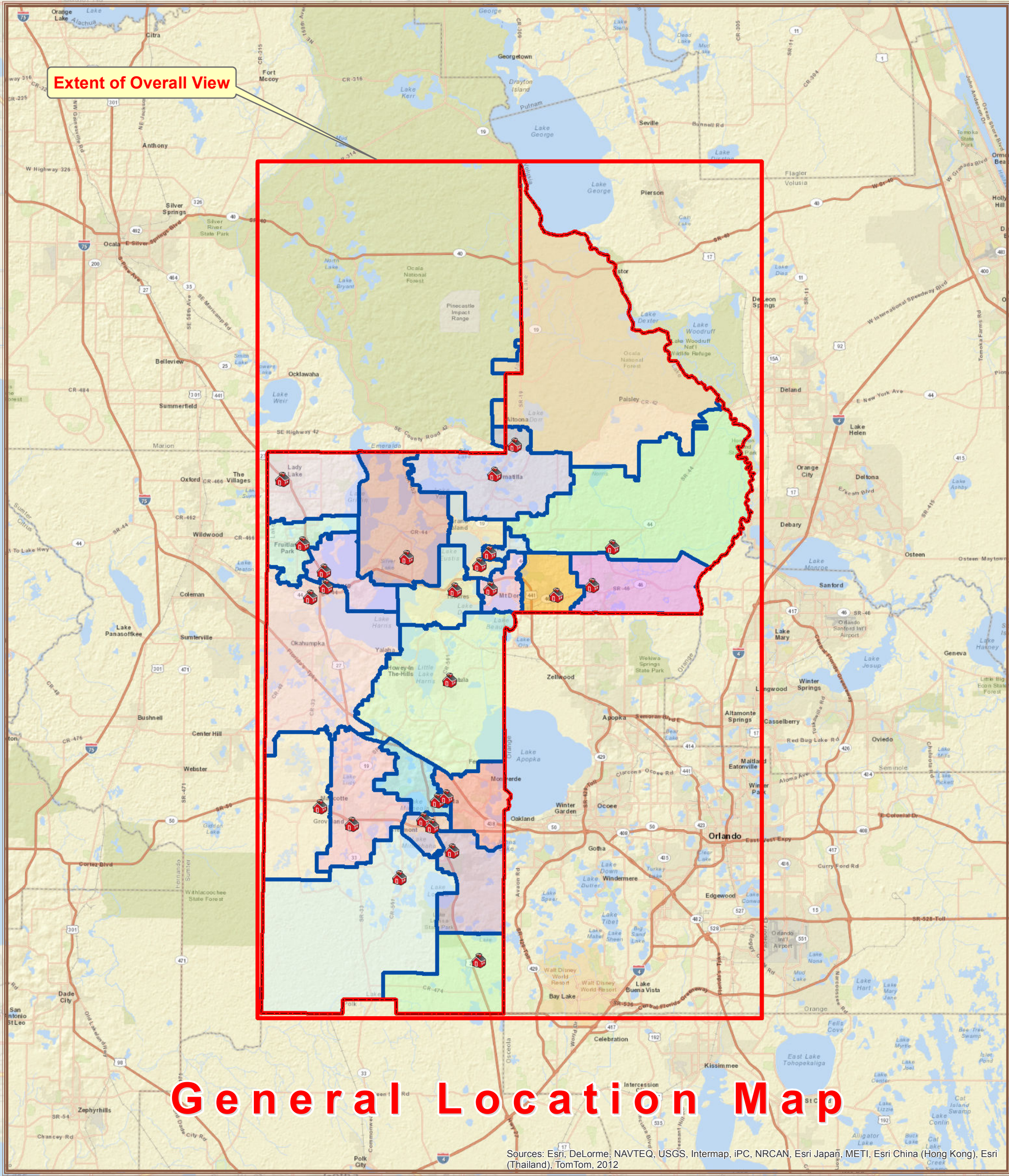
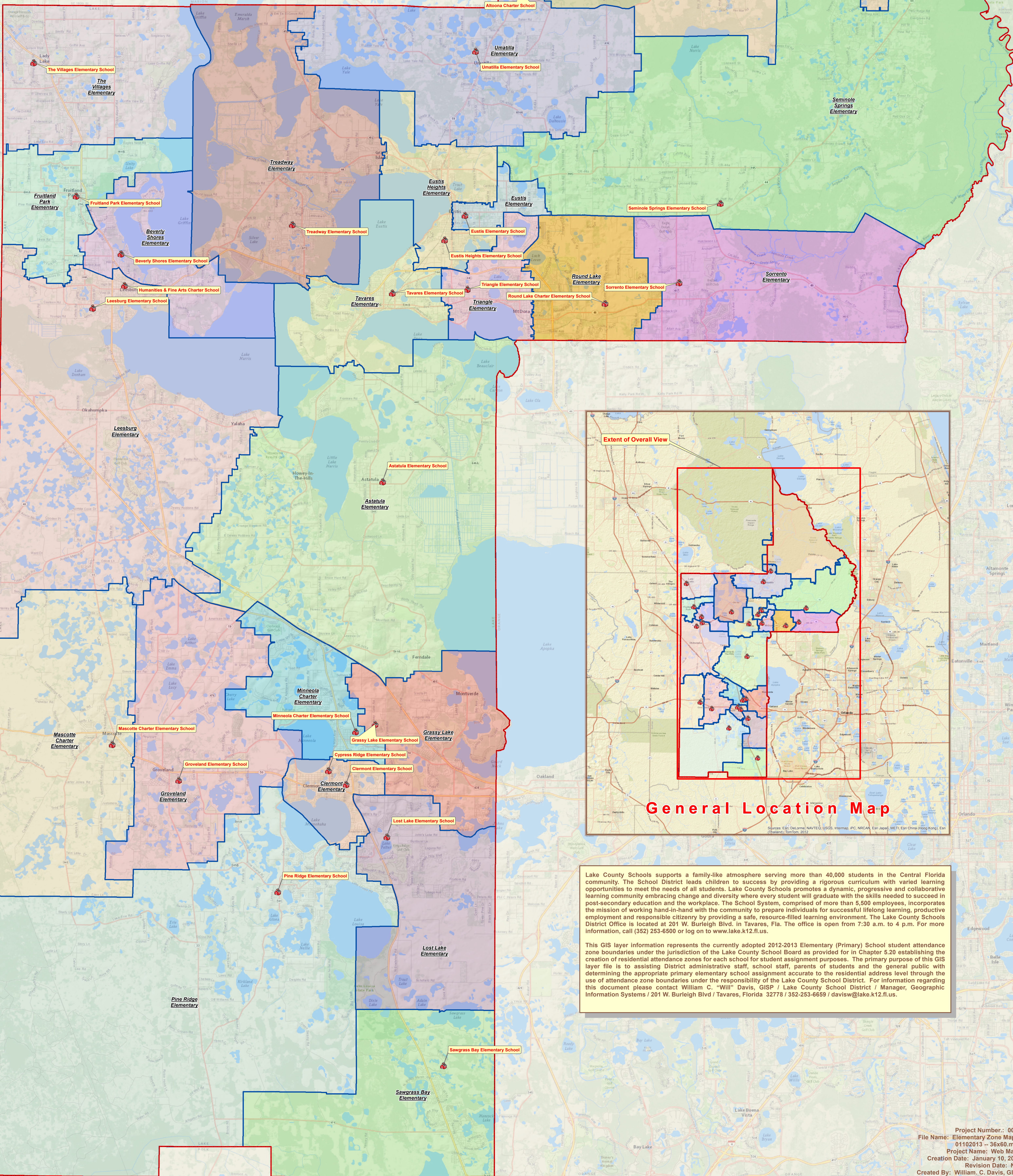
50,000 25,000 0 50,000 100,000  
Feet

1 inch = 6,000 feet



Scan with Smartphone  
to Retrieve a PDF  
Version of this Map

Legend	
County Boundary	Mascotte Elementary
Elementary School Locations	Minneola Elementary
<b>Elementary Attendance Zone</b>	
Astatula Elementary	Pine Ridge Elementary
Beverly Shores Elementary	Round Lake Elementary
Clermont Elementary	Sawgrass Bay Elementary
Eustis Elementary	Seminole Springs Elementary
Eustis Heights Elementary	Sorrento Elementary
Fruitland Park Elementary	Spring Creek
Grassy Lake Elementary	Tavares Elementary
Groveland Elementary	The Villages Elementary
Leesburg Elementary	Treadway Elementary
Lost Lake Elementary	Triangle Elementary
	Umatilla Elementary



Lake County Schools supports a family-like atmosphere serving more than 40,000 students in the Central Florida community. The School District leads children to success by providing a rigorous curriculum with varied learning opportunities to meet the needs of all students. Lake County Schools promotes a dynamic, progressive and collaborative learning community embracing change and diversity where every student will graduate with the skills needed to succeed in post-secondary education and the workplace. The School System, comprised of more than 5,500 employees, incorporates the mission of working hand-in-hand with the community to prepare individuals for successful lifelong learning, productive employment and responsible citizenship by providing a safe, resource-filled learning environment. The Lake County Schools District Office is located at 201 W. Burlingh Blvd. in Tavares, Fla. The office is open from 7:30 a.m. to 4 p.m. For more information, call (352) 253-6500 or log on to [www.lake.k12.fl.us](http://www.lake.k12.fl.us).

This GIS layer information represents the currently adopted 2012-2013 Elementary (Primary) School student attendance zone boundaries under the jurisdiction of the Lake County School Board as provided for in Chapter 5.20 establishing the creation of residential attendance zones for each school for student assignment purposes. The primary purpose of this GIS layer file is to assist District administrative staff, school staff, parents of students and the general public with determining the appropriate primary elementary school assignment accurate to the residential address level through the use of attendance zone boundaries under the responsibility of the Lake County School District. For information regarding this document please contact William C. "Will" Davis, GISP / Lake County School District / Manager, Geographic Information Systems / 201 W. Burlingh Blvd / Tavares, Florida 32778 / (352) 253-6500 / [davisw@lake.k12.fl.us](mailto:davisw@lake.k12.fl.us)