

Lake County School Board

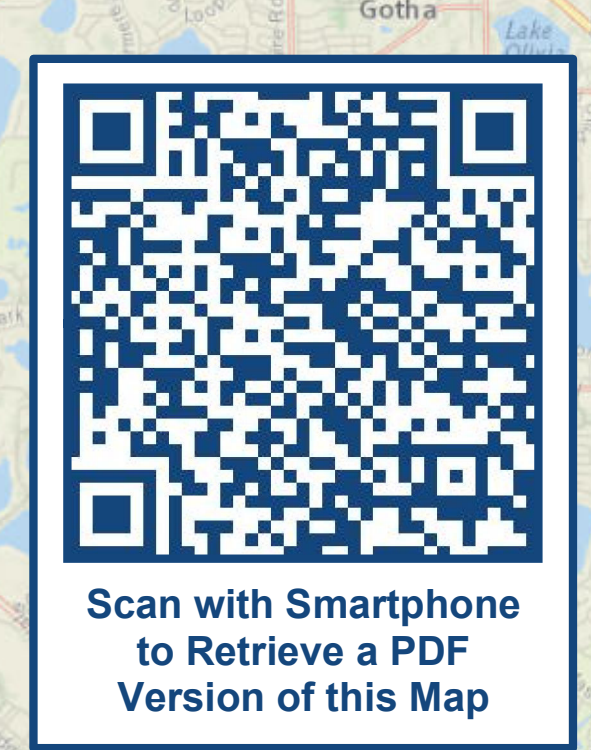
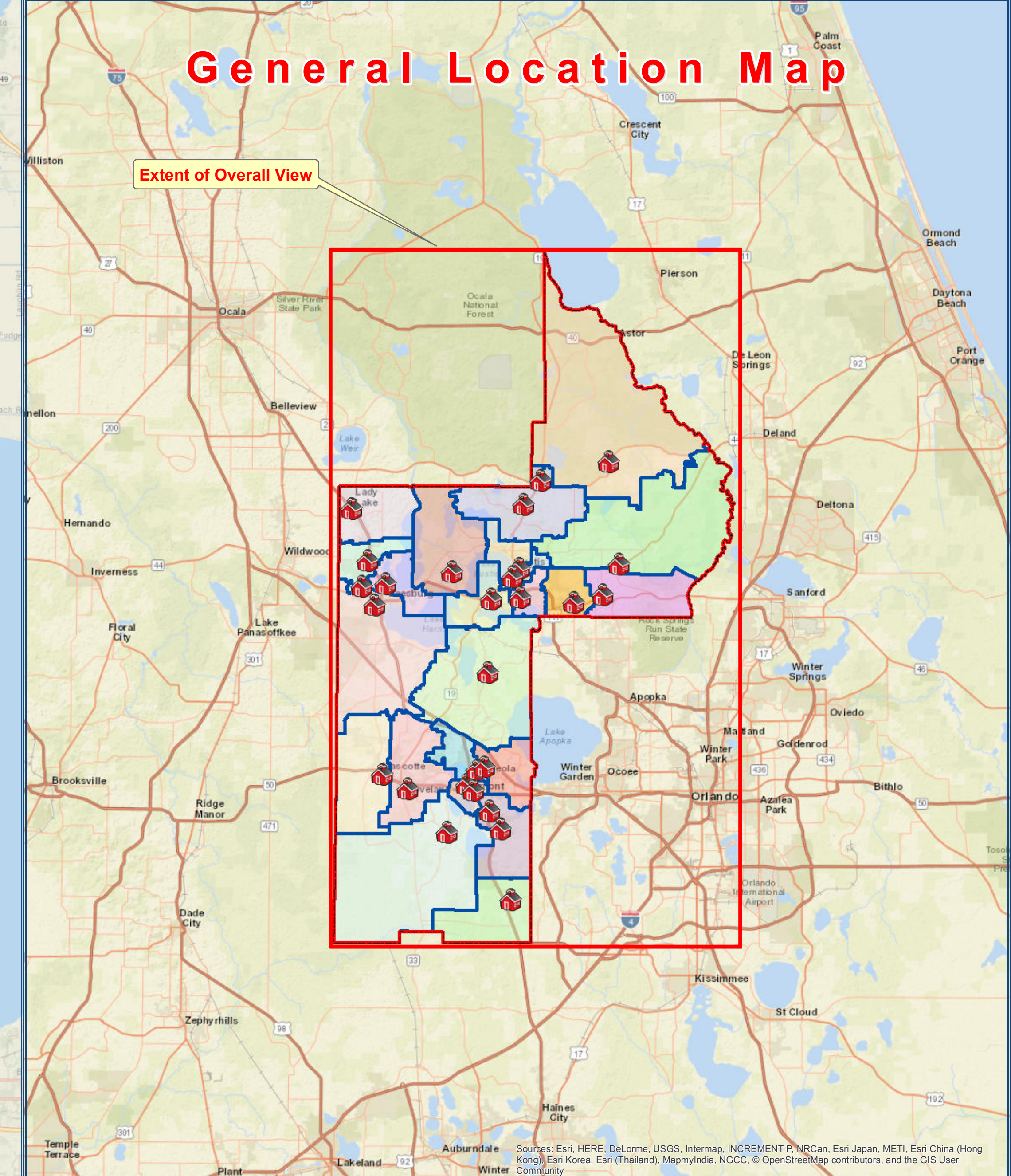
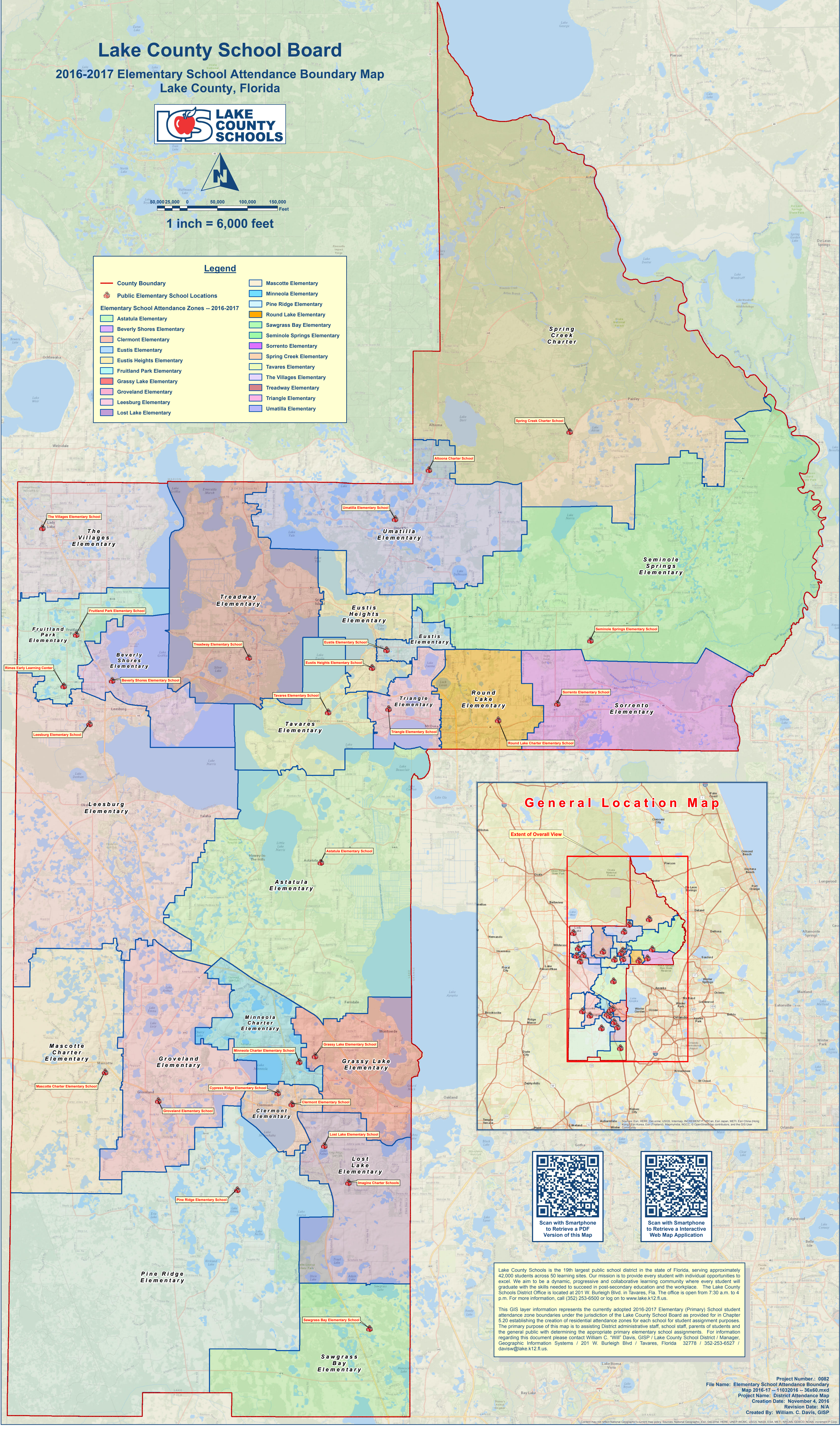
2016-2017 Elementary School Attendance Boundary Map Lake County, Florida



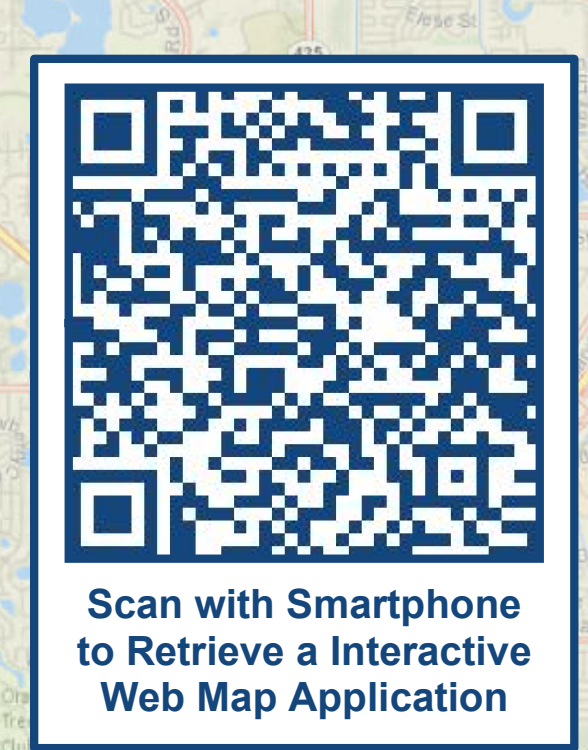
0 50,000 100,000 150,000
Foot

1 inch = 6,000 feet

Legend	
	County Boundary
	Public Elementary School Locations
Elementary School Attendance Zones -- 2016-2017	
	Astatula Elementary
	Beverly Shores Elementary
	Clermont Elementary
	Eustis Elementary
	Eustis Heights Elementary
	Fruitland Park Elementary
	Grassy Lake Elementary
	Groveland Elementary
	Leesburg Elementary
	Lost Lake Elementary
	Mascotte Elementary
	Minneola Elementary
	Pine Ridge Elementary
	Round Lake Elementary
	Sawgrass Bay Elementary
	Seminole Springs Elementary
	Sorrento Elementary
	Spring Creek Elementary
	Tavares Elementary
	The Villages Elementary
	Treadway Elementary
	Triangle Elementary
	Umatilla Elementary



Scan with Smartphone to Retrieve a PDF Version of this Map



Scan with Smartphone to Retrieve a Interactive Web Map Application

Lake County Schools is the 19th largest public school district in the state of Florida, serving approximately 42,000 students across 50 learning sites. Our mission is to provide every student with individual opportunities to excel. We aim to be a dynamic, progressive and collaborative learning community where every student will graduate with the skills needed to succeed in post-secondary education and the workplace. The Lake County Schools District Office is located at 201 W. Burleigh Blvd. in Tavares, Fla. The office is open from 7:30 a.m. to 4 p.m. For more information, call (352) 253-6500 or log on to www.lake.k12.fl.us.

This GIS layer information represents the currently adopted 2016-2017 Elementary (Primary) School student attendance zone boundaries under the jurisdiction of the Lake County School Board as provided for in Chapter 5.20 establishing the creation of residential attendance zones for each school for student assignment purposes. The primary purpose of this map is to assist District administrative staff, school staff, parents of students and the general public with determining the appropriate primary elementary school assignments. For information regarding this document please contact William C. "Will" Davis, GISP / Lake County School District / Manager, Geographic Information Systems / 201 W. Burleigh Blvd / Tavares, Florida 32778 / 352-253-6527 / davisw@lake.k12.fl.us.