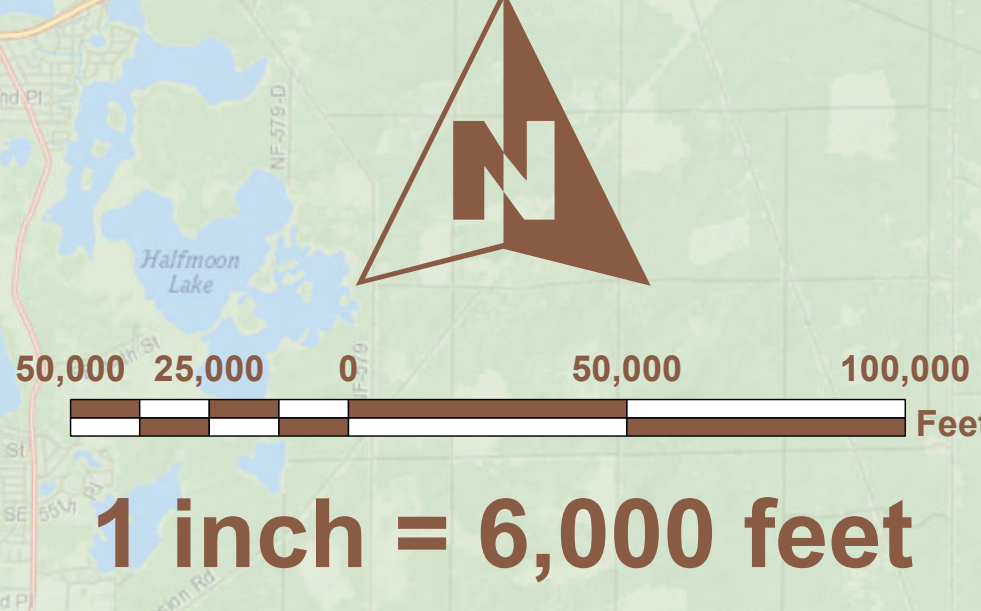


Lake County School Board

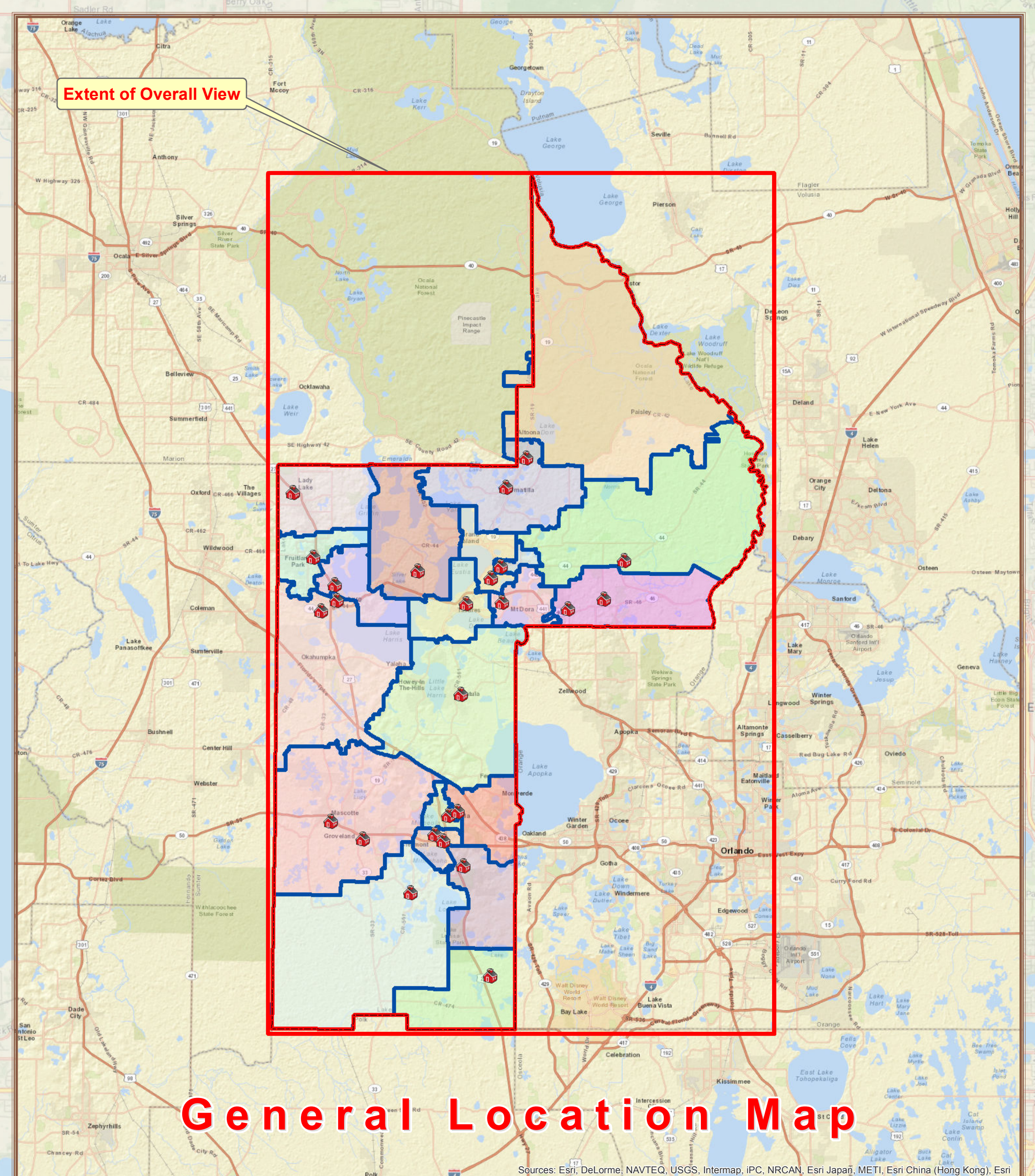
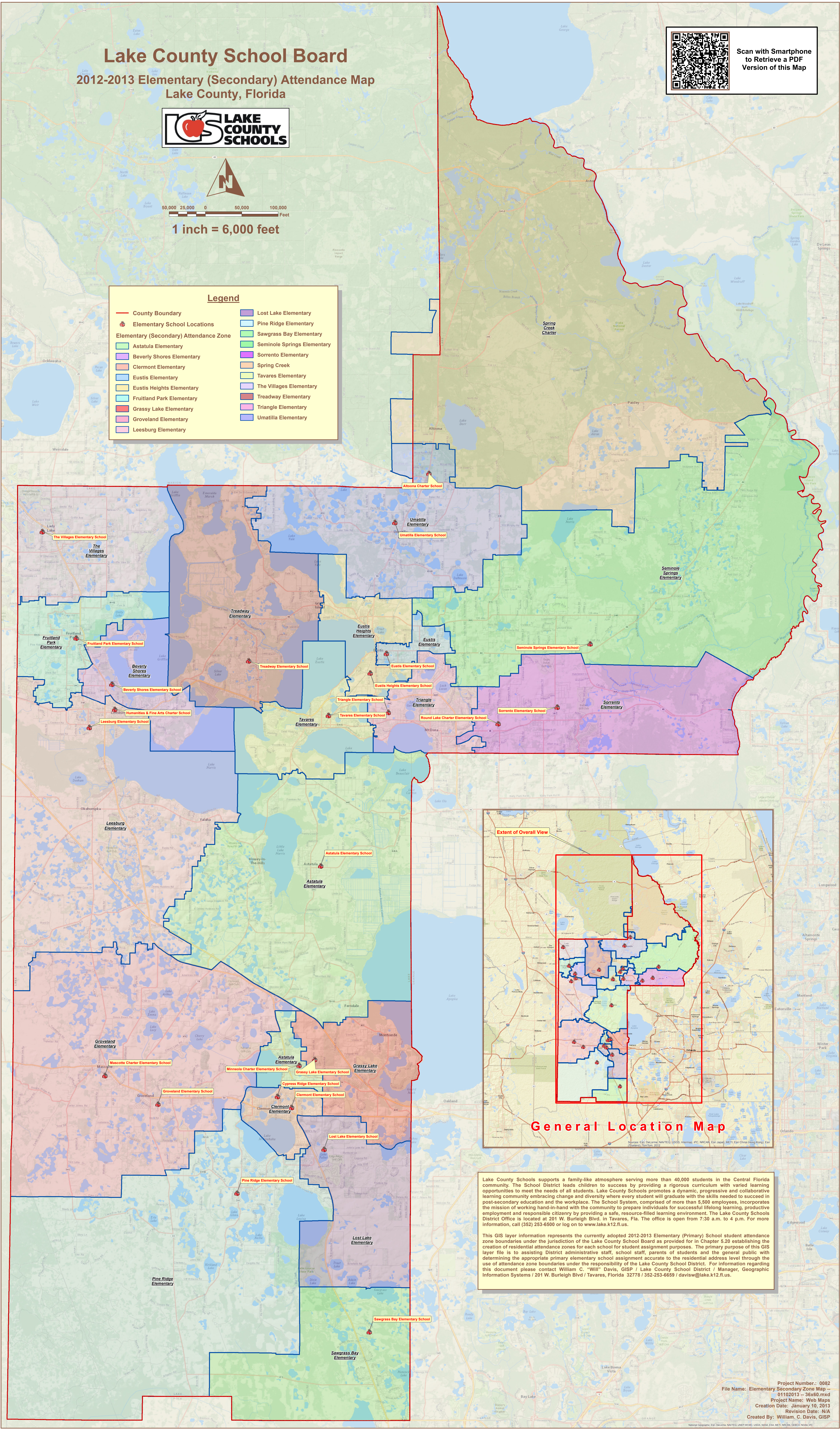
2012-2013 Elementary (Secondary) Attendance Map

Lake County, Florida



Scan with Smartphone
to Retrieve a PDF
Version of this Map

| Legend | |
|--|-----------------------------|
| | County Boundary |
| | Elementary School Locations |
| Elementary (Secondary) Attendance Zone | |
| | Astatula Elementary |
| | Beverly Shores Elementary |
| | Clermont Elementary |
| | Eustis Elementary |
| | Eustis Heights Elementary |
| | Fruitland Park Elementary |
| | Grassy Lake Elementary |
| | Groveland Elementary |
| | Leesburg Elementary |
| | Lost Lake Elementary |
| | Pine Ridge Elementary |
| | Sawgrass Bay Elementary |
| | Seminole Springs Elementary |
| | Sorrento Elementary |
| | Spring Creek |
| | Tavares Elementary |
| | The Villages Elementary |
| | Treadway Elementary |
| | Triangle Elementary |
| | Umatilla Elementary |



Lake County Schools supports a family-like atmosphere serving more than 40,000 students in the Central Florida community. The School District leads children to success by providing a rigorous curriculum with varied learning opportunities to meet the needs of all students. Lake County Schools promotes a dynamic, progressive and collaborative learning community embracing change and diversity where every student will graduate with the skills needed to succeed in post-secondary education and the workplace. The School System, comprised of more than 5,500 employees, incorporates the mission of working hand-in-hand with the community to prepare individuals for successful lifelong learning, productive employment and responsible citizenship by providing a safe, resource-filled learning environment. The Lake County Schools District Office is located at 201 W. Burleigh Blvd. in Tavares, Fla. The office is open from 7:30 a.m. to 4 p.m. For more information, call (352) 253-6900 or log on to www.lake.k12.fl.us.

This GIS layer information represents the currently adopted 2012-2013 Elementary (Primary) School student attendance zone boundaries under the jurisdiction of the Lake County School Board as provided for in Chapter 5.20 establishing the creation of residential attendance zones for each school for student assignment purposes. The primary purpose of this GIS layer file is assisting District administrative staff, school staff, parents of students and the general public with determining the appropriate primary elementary school assignment accurate to the residential address level through the use of attendance zone boundaries under the responsibility of the Lake County School District. For information regarding this document please contact William C. "Will" Davis, GISP / Lake County School District / Manager, Geographic Information Systems / 201 W. Burleigh Blvd / Tavares, Florida 32778 / 352-253-6659 / davisw@lake.k12.fl.us